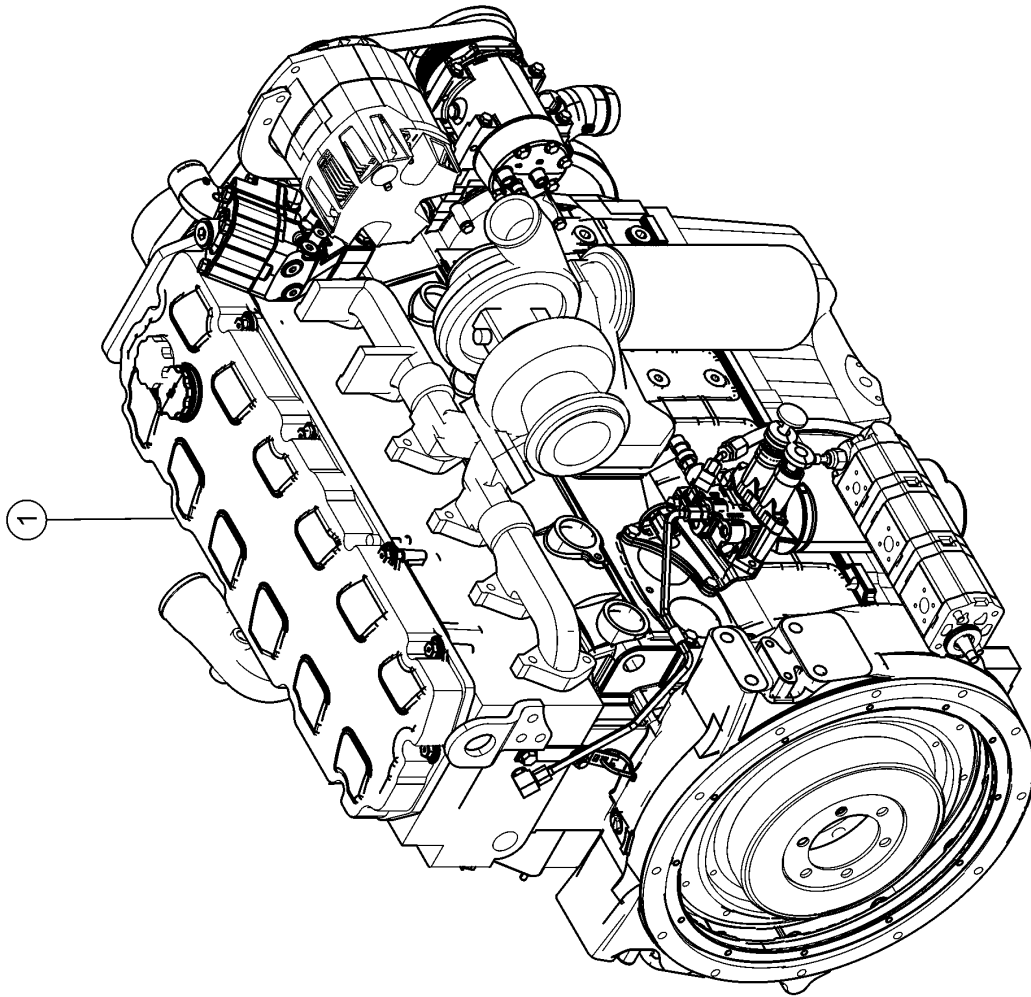


1000

17623z00



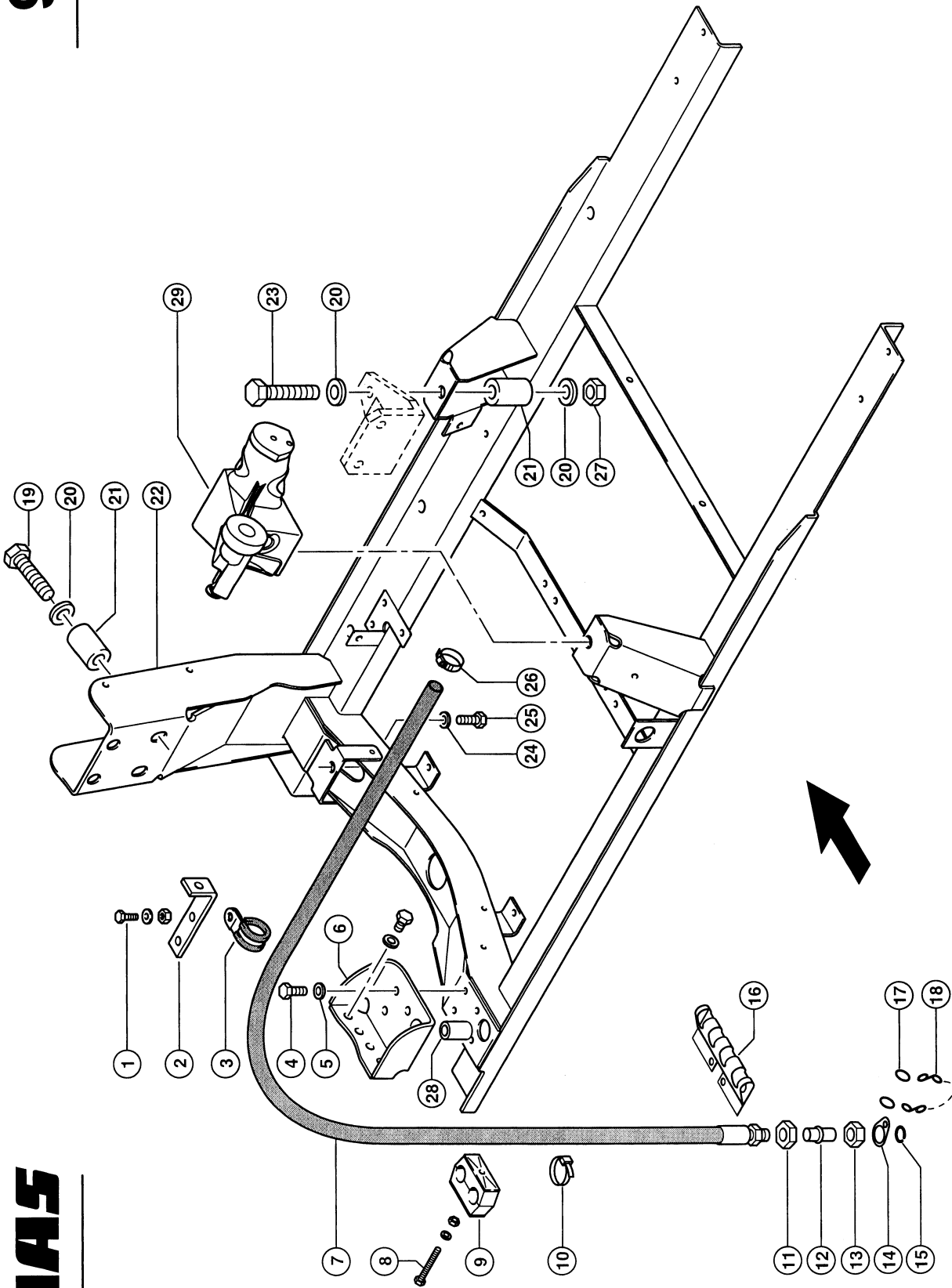
LEXION®

010 COMPLETE ENGINE

| Pos. | Part No. | Description | Dimension | Quantity | Conditions |
|-------------|----------------------|--------------------|--|-----------------|-------------------|
| 1 | 00 0798 012 1 | ENGINE | C9 232KW TIER3 | 1 | 1) |
| 1 | 00 0796 889 1 | ENGINE | C9 232KW T3 | 1 | 2) |
| 1) | Equipment | MD_P02_0660 | CAT C9 engine (EWG230kW/ECE217kW) | | |
| 2) | Equipment | MD_P02_0661 | CAT C9 engine (EWG230kW/ECE217kW) with air compressor system | | |

969

17194Z00
LEXION 530-510



CLAAS

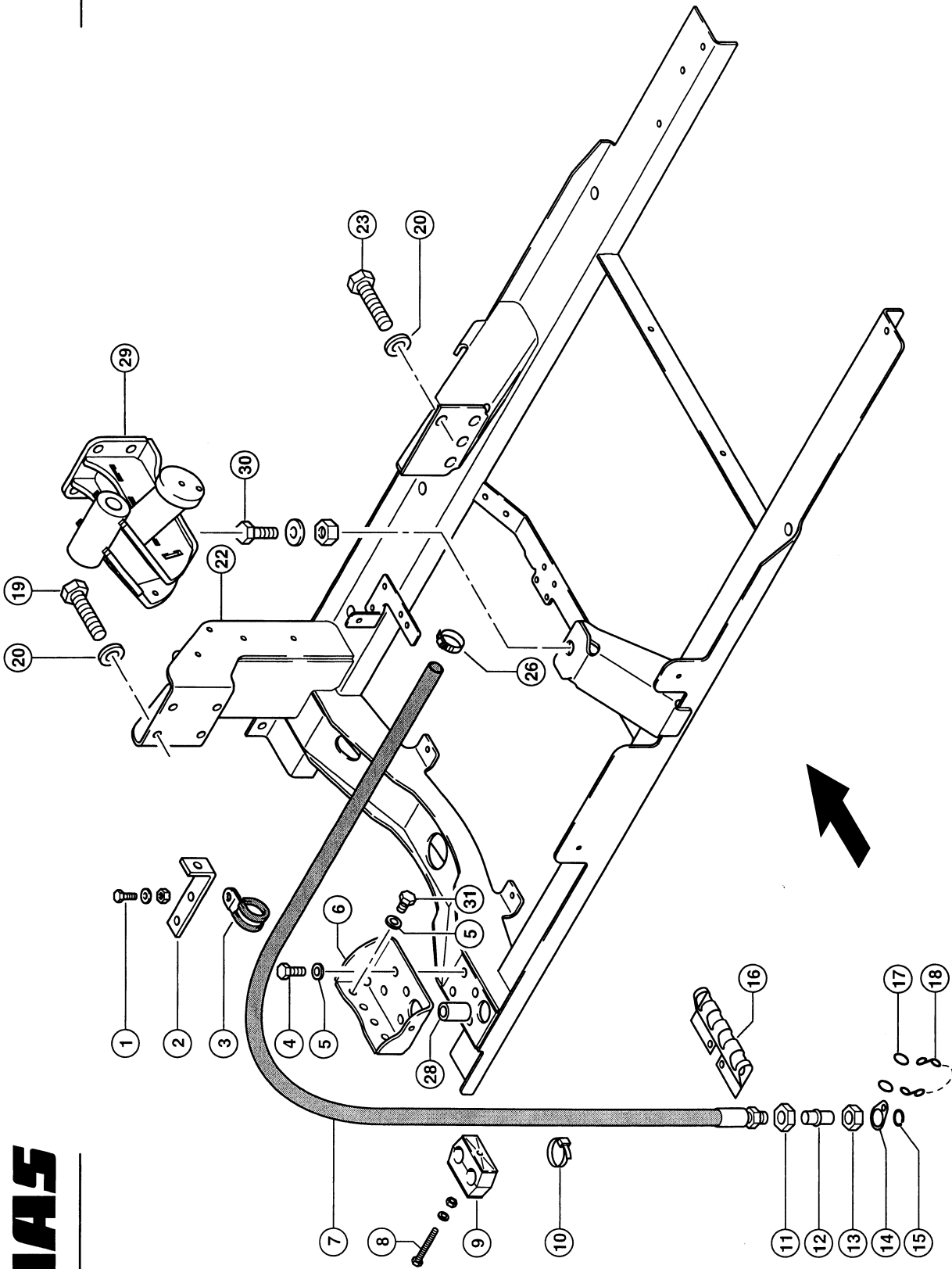
143744

ENGINE CAT C9; BASE, OIL DRAIN HOSE

| Pos. | Part No. | Description | Dimension | Quantity | Conditions |
|------|----------------------|-------------------|------------------------------|----------|------------|
| 1 | 00 0236 200 0 | HEXAGON HEAD BOLT | M8X20 | 1 | |
| 1 | 00 0239 387 0 | CONTACT WASHER | A8-8,2X18X1,4 | 1 | |
| 1 | 00 0236 170 0 | HEXAGONAL NUT | M8 | 1 | |
| 2 | 00 0073 012 1 | ANGLE | 30X5X160 | 1 | |
| 3 | 00 0215 394 0 | HOLDER CLAMP | D1-24X20 | 2 | |
| 4 | 00 0237 461 0 | HEXAGON HEAD BOLT | M12X30 | 4 | |
| 5 | 00 0239 389 0 | CONTACT WASHER | A12 | 4 | |
| 6 | 00 0760 949 2 | SUPPORT REAR | | 1 | |
| 7 | 00 0350 390 1 | OIL DRAIN HOSE | | 1 | |
| 8 | 00 0235 522 0 | HEXAGON HEAD BOLT | M8 X 65 | 2 | |
| 8 | 00 0239 387 0 | CONTACT WASHER | A8-8,2X18X1,4 | 2 | |
| 8 | 00 0236 170 0 | HEXAGONAL NUT | M8 | 2 | |
| 9 | 00 0689 060 0 | CLAMP | Z KP-3-R-25-25-PA | 1 | |
| 10 | 00 0697 798 0 | CABLE TIE | 7,6X290X1,9 | 2 | |
| 11 | 00 0236 327 0 | HEXAGONAL NUT | M22X1,5 | 1 | |
| 12 | 00 0077 528 1 | DRAIN FITTING | D18,1X51,5 | 1 | |
| 13 | 00 0633 589 1 | UNION NUT | A3 L15 | 1 | |
| 14 | 00 0077 529 0 | STRAP | 1,0X0026X0041 | 1 | |
| 15 | 00 0215 080 0 | SNAP RING | A 14 | 1 | |
| 16 | 00 0771 504 0 | SUPPORT | 3,0X126X230 | 1 | |
| 17 | 00 0002 846 0 | RING | SPIRALFÖRMIG OFFEN 2 16 X | | |
| 18 | 00 0002 848 0 | KNOT CHAIN | 1,8X 25X 6GL | 1 | |
| 19 | 00 0215 631 0 | HEXAGON HEAD BOLT | 3/4-10UNC-2AX4 1/2 | 4 | |
| 20 | 00 0212 191 0 | CONTACT WASHER | A20 | 8 | |
| 21 | 00 0796 231 0 | BUSHING | D42D20.5X62 | 6 | |
| 22 | 00 0353 682 2 | ENGINE MOUNTING | C9 TYP 583 | 1 | |
| 23 | 00 0211 186 0 | HEXAGON HEAD BOLT | M20X130 | 2 | |
| 24 | 00 0239 389 0 | CONTACT WASHER | A12 | 1 | |
| 25 | 00 0211 465 0 | HEX.HEAD BOLT | 1/2-13UNC-2AX1 1/2 | 1 | |
| 26 | 00 0408 554 2 | HOSE CLAMP | W.ERS.D.4085543 | 1 | |
| 27 | 00 0237 521 0 | HEX.NUT | M20 | 2 | |
| 28 | 00 0796 273 0 | BUSHING | D32/D18X50 | 2 | |
| 29 | 00 0796 942 1 | ENGINE SUPPORT | | 1 | |
| 29 | 00 0214 367 0 | SOCKET HEAD SCREW | M16X 40 | 4 | |
| 29 | 00 0215 291 1 | WASHER | 16 -16,2X24,6X3,5 | 4 | |

970

17240z00
LEXION 530-510



CLAAS

143746

ENGINE C6.6; BASE, OIL DRAIN HOSE

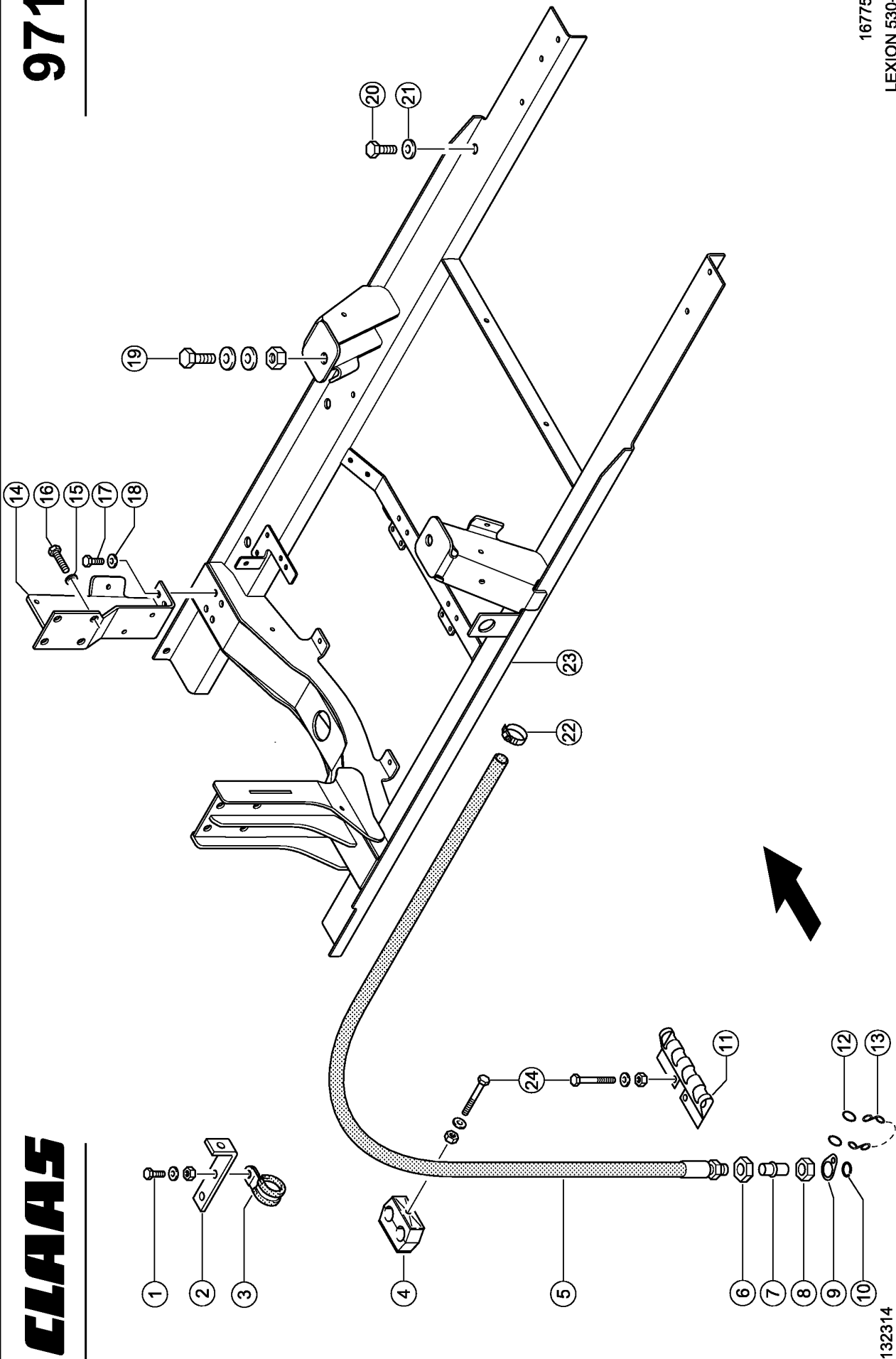
| Pos. | Part No. | Description | Dimension | Quantity | Conditions |
|------|----------------------|-------------------|-----------------------------|----------|------------|
| 1 | 00 0236 200 0 | HEXAGON HEAD BOLT | M8X20 | 1 | |
| 1 | 00 0239 387 0 | CONTACT WASHER | A8-8,2X18X1,4 | 1 | |
| 1 | 00 0236 170 0 | HEXAGONAL NUT | M8 | 1 | |
| 2 | 00 0073 012 1 | ANGLE | 30X5X160 | 1 | |
| 3 | 00 0215 394 0 | HOLDER CLAMP | D1-24X20 | 2 | |
| 4 | 00 0237 461 0 | HEXAGON HEAD BOLT | M12X30 | 4 | |
| 5 | 00 0239 389 0 | CONTACT WASHER | A12 | 8 | |
| 6 | 00 0798 056 1 | SUPPORT | 6X162X279 | 1 | |
| 7 | 00 0738 691 0 | HOSE | 2TE 16 SA-2300 | 1 | 1) |
| 7 | 00 0350 390 1 | OIL DRAIN HOSE | | 1 | 2) |
| 8 | 00 0235 522 0 | HEXAGON HEAD BOLT | M8 X 65 | 2 | |
| 8 | 00 0239 387 0 | CONTACT WASHER | A8-8,2X18X1,4 | 2 | |
| 8 | 00 0236 170 0 | HEXAGONAL NUT | M8 | 2 | |
| 9 | 00 0689 060 0 | CLAMP | Z KP-3-R-25-25-PA | 1 | |
| 10 | 00 0697 798 0 | CABLE TIE | 7,6X290X1,9 | 2 | |
| 11 | 00 0236 327 0 | HEXAGONAL NUT | M22X1,5 | 1 | |
| 12 | 00 0077 528 1 | DRAIN FITTING | D18,1X51,5 | 1 | |
| 13 | 00 0633 589 1 | UNION NUT | A3 L15 | 1 | |
| 14 | 00 0077 529 0 | STRAP | 1,0X0026X0041 | 1 | |
| 15 | 00 0215 080 0 | SNAP RING | A 14 | 1 | |
| 16 | 00 0771 504 0 | SUPPORT | 3,0X126X230 | 1 | |
| 17 | 00 0002 846 0 | RING | SPIRALFÖRMIG OFFEN2 16 X | | |
| 18 | 00 0002 848 0 | KNOT CHAIN | 1,8X 25X 6GL | 1 | |
| 19 | 00 0236 056 0 | HEXAGON HEAD BOLT | M12X25 | 4 | |
| 20 | 00 0239 389 0 | CONTACT WASHER | A12 | 4 | |
| 22 | 00 0743 816 1 | ENGINE MOUNTING | | 1 | |
| 23 | 00 0237 376 0 | HEXAGON HEAD BOLT | M16X30 | 4 | |
| 24 | 00 0239 391 0 | CONTACT WASHER | A16 | 4 | |
| 26 | 00 0408 554 2 | HOSE CLAMP | W.ERS.D.4085543 | 1 | |
| 28 | 00 0796 273 0 | BUSHING | D32/D18X50 | 2 | |
| 29 | 00 0798 193 1 | ENGINE SUPPORT | | 1 | |
| 29 | 00 0237 693 0 | SOCKET HEAD SCREW | M16X35 | 3 | |
| 29 | 00 0215 291 1 | WASHER | 16 -16,2X24,6X3,5 | 3 | |
| 30 | 00 0242 406 0 | HEXAGON HEAD BOLT | M20X40 | 1 | |
| 30 | 00 0212 191 0 | CONTACT WASHER | A20 | 1 | |
| 30 | 00 0237 521 0 | HEX.NUT | M20 | 1 | |
| 31 | 00 0237 458 0 | HEXAGON HEAD BOLT | M12X20 | 4 | |

1) Remarks from no. 58300919

2) Remarks up to no. 58300918

971

16775z00
LEXION 530-510



CLAAS

132314

ENGINE 3126B; BASE, OIL DRAIN HOSE

| Pos. | Part No. | Description | Dimension | Quantity | Conditions |
|------|----------------------|-------------------|-----------------------------|----------|------------|
| 1 | 00 0237 442 0 | HEXAGON HEAD BOLT | M8X25 | 1 | |
| 1 | 00 0236 170 0 | HEXAGONAL NUT | M8 | 1 | |
| 1 | 00 0239 387 0 | CONTACT WASHER | A8-8,2X18X1,4 | 1 | |
| 2 | 00 0073 012 1 | ANGLE | 30X5X160 | 1 | |
| 3 | 00 0215 394 0 | HOLDER CLAMP | D1-24X20 | 1 | |
| 4 | 00 0689 060 0 | CLAMP | Z KP-3-R-25-25-PA | 1 | |
| 5 | 00 0350 390 1 | OIL DRAIN HOSE | | 1 | |
| 6 | 00 0236 327 0 | HEXAGONAL NUT | M22X1,5 | 1 | |
| 7 | 00 0077 528 1 | DRAIN FITTING | D18,1X51,5 | 1 | |
| 8 | 00 0633 589 1 | UNION NUT | A3 L15 | 1 | |
| 9 | 00 0077 529 0 | STRAP | 1,0X0026X0041 | 1 | |
| 10 | 00 0215 080 0 | SNAP RING | A 14 | 1 | |
| 11 | 00 0771 504 0 | SUPPORT | 3,0X126X230 | 1 | |
| 12 | 00 0002 846 0 | RING | SPIRALFÖRMIG OFFEN2 16 X | | |
| 13 | 00 0002 848 0 | KNOT CHAIN | 1,8X 25X 6GL | 1 | |
| 14 | 00 0796 247 1 | SUPPORT | | 1 | |
| 15 | 00 0239 390 0 | CONTACT WASHER | A14 | 8 | |
| 16 | 00 0242 460 0 | HEXAGON HEAD BOLT | M14X30 | 2 | |
| 16 | 00 0061 840 0 | BUSHING | 11X25X20 | 4 | |
| 16 | 00 0235 566 0 | HEXAGON HEAD BOLT | M14X35 | 2 | |
| 16 | 00 0242 462 0 | HEXAGON HEAD BOLT | M14X60 | 2 | |
| 17 | 00 0237 456 0 | HEXAGON HEAD BOLT | M10X45 | 4 | |
| 18 | 00 0239 388 0 | CONTACT WASHER | A10-10,2X22,25X1,6 | 4 | |
| 19 | 00 0237 591 0 | HEX.HEAD BOLT | M20X60 | 2 | |
| 19 | 00 0237 521 0 | HEX.NUT | M20 | 2 | |
| 19 | 00 0212 191 0 | CONTACT WASHER | A20 | 4 | |
| 20 | 00 0236 230 0 | HEXAGON HEAD BOLT | M16X35 | 8 | |
| 21 | 00 0239 391 0 | CONTACT WASHER | A16 | 8 | |
| 22 | 00 0408 554 2 | HOSE CLAMP | W.ERS.D.4085543 | 1 | |
| 23 | 00 0761 881 2 | ENGINE MOUNTING | 3126B TYP543 | 1 | |
| 24 | 00 0237 341 0 | HEXAGON HEAD BOLT | M08X45 | 3 | |
| 24 | 00 0236 170 0 | HEXAGONAL NUT | M8 | 3 | |
| 24 | 00 0239 387 0 | CONTACT WASHER | A8-8,2X18X1,4 | 3 | |

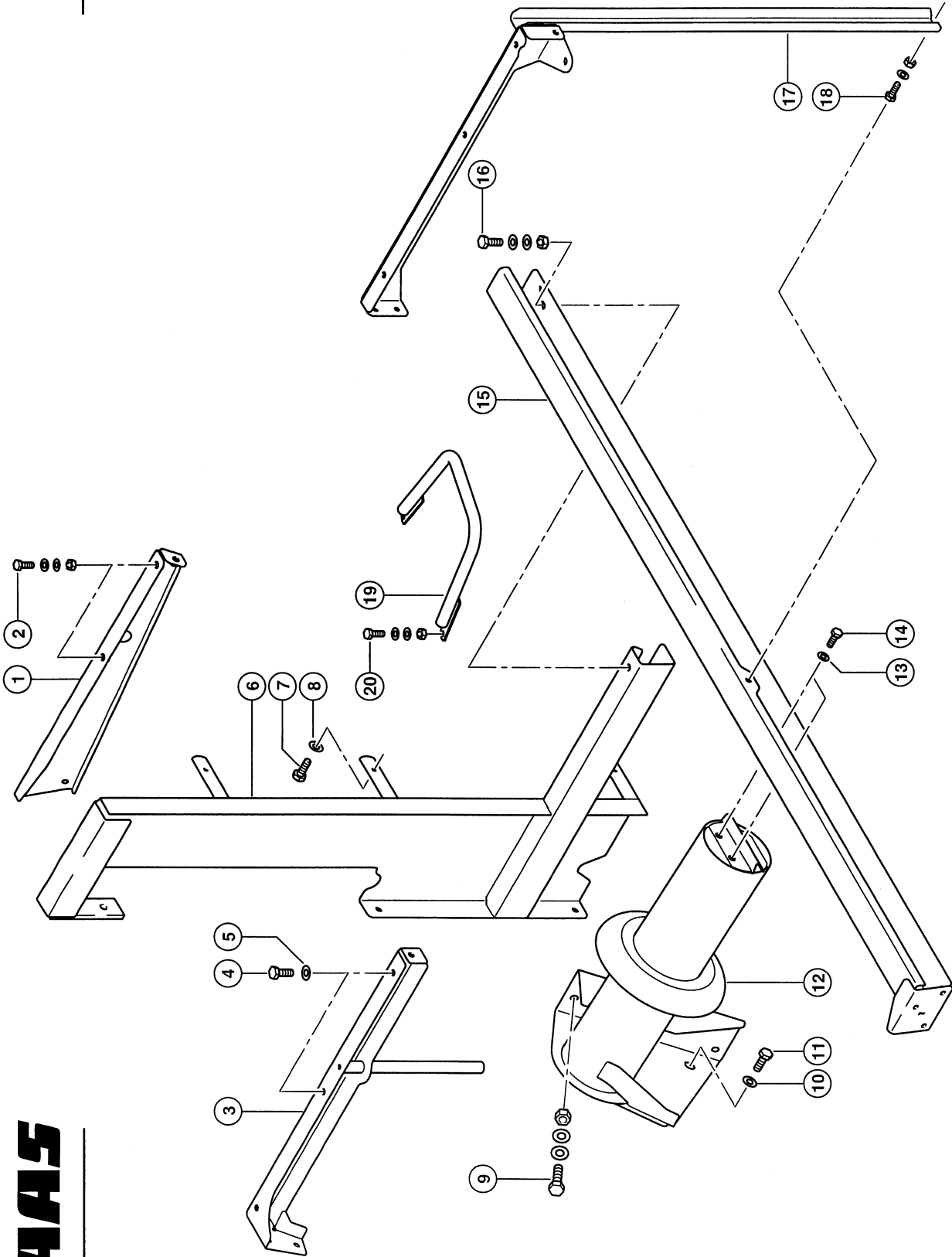
782

CLAAS

LEXION 530-510

17235Z00
LEXION 530-510

132305/01

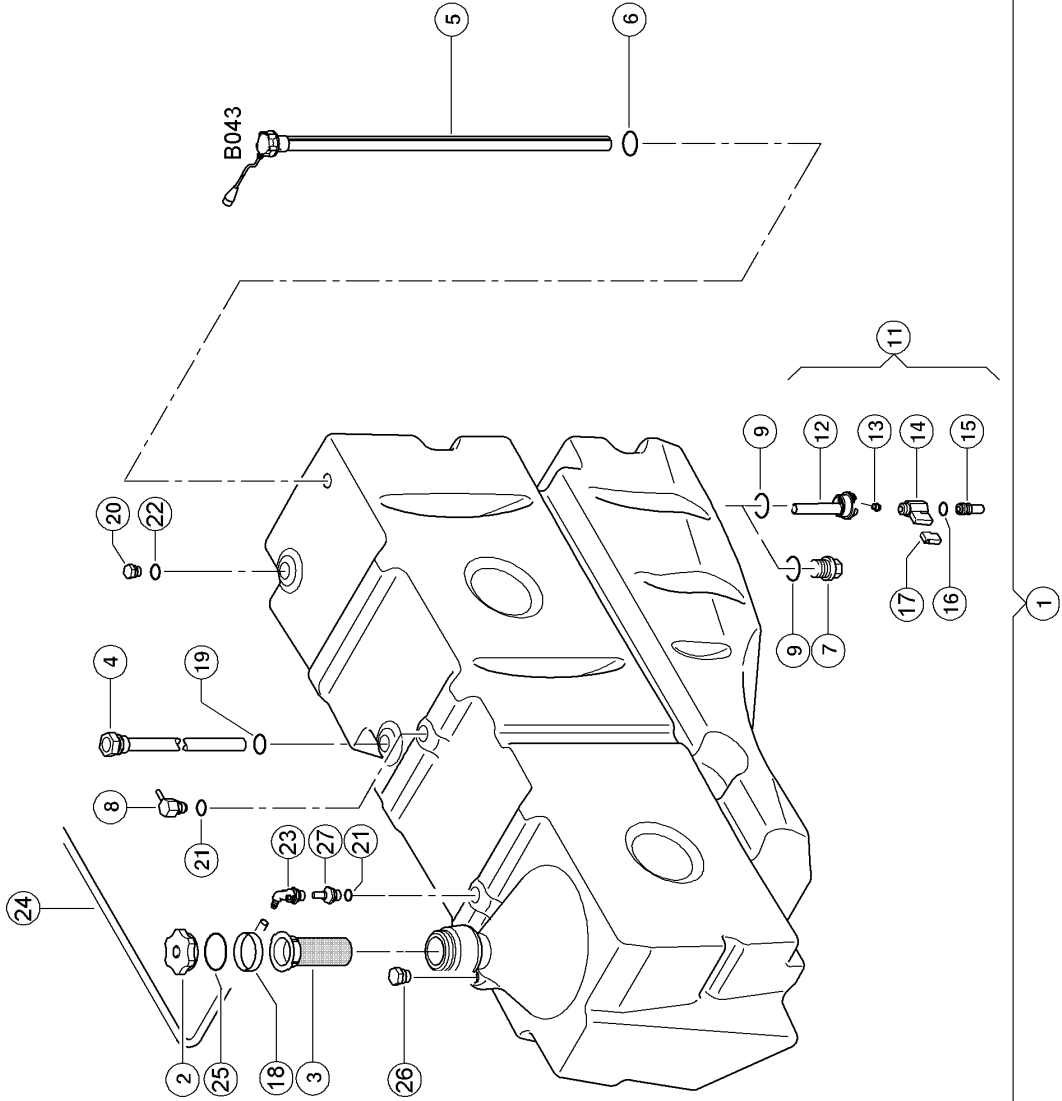


BRACKET FOR FUEL TANK

| Pos. | Part No. | Description | Dimension | Quantity | Conditions |
|-------------|----------------------|--------------------|--------------------|-----------------|-------------------|
| 1 | 00 0794 841 3 | FASTENER | 1420 | 1 | |
| 2 | 00 0237 370 0 | HEXAGON HEAD BOLT | M8X30 | 2 | |
| 2 | 00 0239 387 0 | CONTACT WASHER | A8-8,2X18X1,4 | 4 | |
| 2 | 00 0236 170 0 | HEXAGONAL NUT | M8 | 2 | |
| 3 | 00 0794 936 1 | SUPPORT | | 1 | |
| 4 | 00 0237 453 0 | HEXAGON HEAD BOLT | M10X30 | 2 | |
| 5 | 00 0239 388 0 | CONTACT WASHER | A10-10,2X22,25X1,6 | 2 | |
| 6 | 00 0794 938 3 | SUPPORT | 1420 | 1 | |
| 7 | 00 0237 453 0 | HEXAGON HEAD BOLT | M10X30 | 3 | |
| 8 | 00 0239 388 0 | CONTACT WASHER | A10-10,2X22,25X1,6 | 3 | |
| 9 | 00 0237 461 0 | HEXAGON HEAD BOLT | M12X30 | 4 | |
| 9 | 00 0239 387 0 | CONTACT WASHER | A8-8,2X18X1,4 | 8 | |
| 9 | 00 0236 172 0 | HEXAGONAL NUT | M12 | 4 | |
| 10 | 00 0239 388 0 | CONTACT WASHER | A10-10,2X22,25X1,6 | 1 | |
| 11 | 00 0237 453 0 | HEXAGON HEAD BOLT | M10X30 | 1 | |
| 12 | 00 0794 935 2 | MAIN FRAME | 1420 | 1 | |
| 13 | 00 0239 387 0 | CONTACT WASHER | A8-8,2X18X1,4 | 2 | |
| 14 | 00 0237 439 0 | HEXAGON HEAD BOLT | M8X16 | 2 | |
| 15 | 00 0794 855 1 | SUPPORT | | 1 | |
| 16 | 00 0237 453 0 | HEXAGON HEAD BOLT | M10X30 | 1 | |
| 16 | 00 0239 388 0 | CONTACT WASHER | A10-10,2X22,25X1,6 | 2 | |
| 16 | 00 0236 171 0 | HEXAGONAL NUT | M10 | 1 | |
| 17 | 00 0794 937 2 | SUPPORT | 1420 | 1 | |
| 18 | 00 0237 439 0 | HEXAGON HEAD BOLT | M8X16 | 3 | |
| 18 | 00 0239 387 0 | CONTACT WASHER | A8-8,2X18X1,4 | 4 | |
| 18 | 00 0236 170 0 | HEXAGONAL NUT | M8 | 1 | |
| 19 | 00 0782 676 0 | REINFORCING PLATE | | 1 | |
| 20 | 00 0237 453 0 | HEXAGON HEAD BOLT | M10X30 | 2 | |
| 20 | 00 0239 388 0 | CONTACT WASHER | A10-10,2X22,25X1,6 | 4 | |
| 20 | 00 0236 171 0 | HEXAGONAL NUT | M10 | 2 | |

963

CLAAS



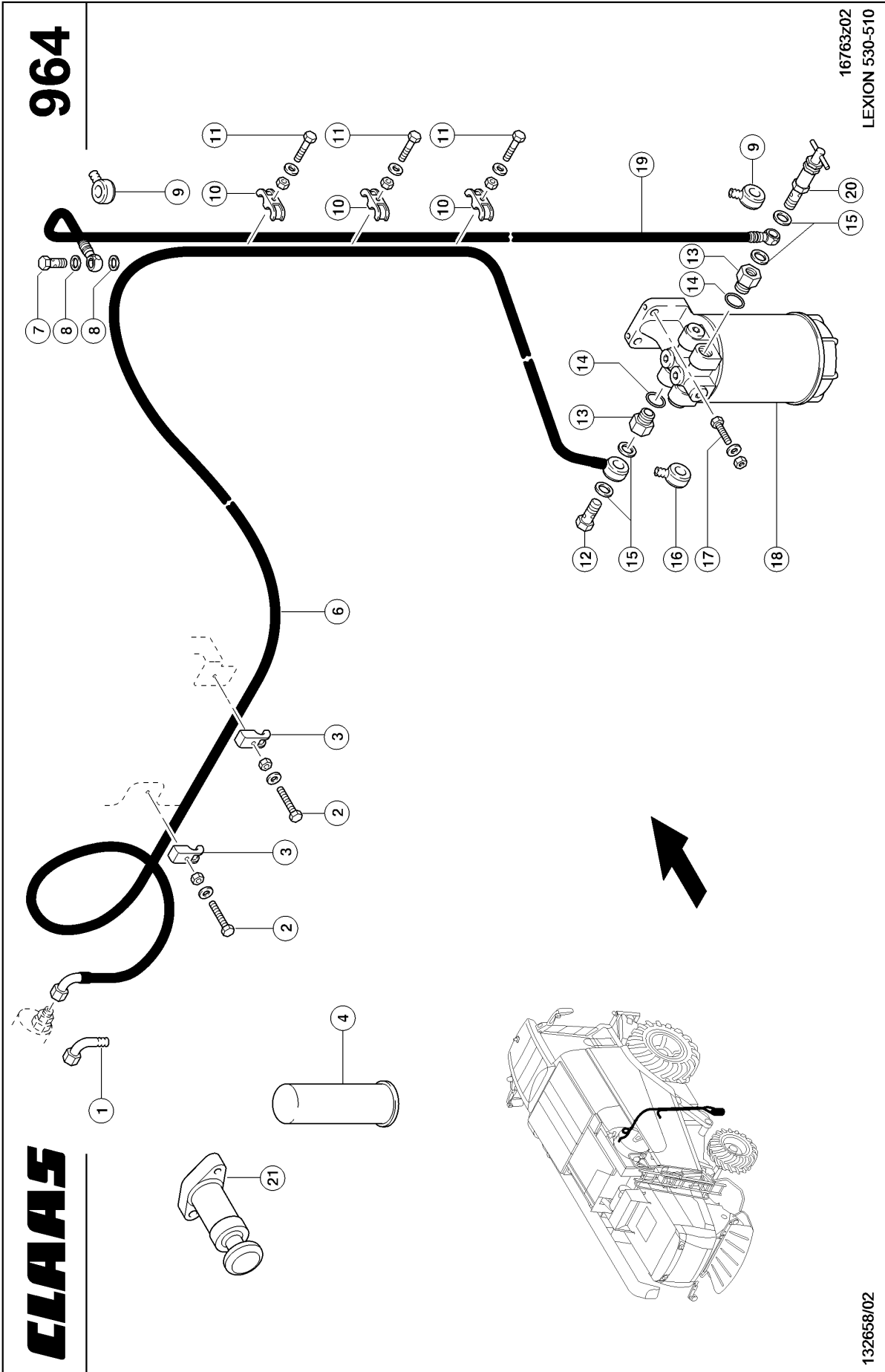
16761Z04
LEXION 530-510

132285/02

FUEL TANK

| Pos. | Part No. | Description | Dimension | Quantity | Conditions |
|------|----------------------|-------------------|-----------------------------|----------|------------|
| 1 | 00 0794 917 5 | FUEL TANK | 600 NUR ET | 1 | 1) |
| 1 | 00 0794 415 2 | FUEL TANK | 600LTR. OHNE Z-TANK | 1 | 2) |
| 1 | 00 0794 917 3 | FUEL TANK | 600 LTR | 1 | 3) |
| 2 | 00 0624 003 1 | CAP | DV 80 GL | 1 | 4) |
| 2 | 00 0217 508 0 | CAP | DV 80 GL OHNE LÜFTUNG | 1 | |
| 2 | 00 0177 621 0 | CAP | D80 BELUEFTET, ABSCHLIES | 1 | 5) |
| 3 | 00 0736 238 0 | TANK FILTER | | 1 | |
| 4 | 00 0794 999 1 | SUCTION TUBE | 600 LTR | 1 | |
| 5 | 00 0016 597 1 | LEVEL INDICATOR | 1065MM / 99MM | 1 | 1) |
| 5 | 00 0794 997 0 | LEVEL INDICATOR | 600 L | 1 | 6) |
| 5 | 00 0783 653 0 | PT SCREW | 6ST 4X40 | 1 | |
| 6 | 00 0794 993 0 | GASKET | VORRATSGEBER | 1 | |
| 7 | 00 0687 607 0 | DRAIN SCREW | M33X2 | 1 | 7) |
| 8 | 00 0794 995 0 | BREATHER VALVE | | 1 | 6) |
| 9 | 00 0217 459 1 | O-RING | 27X4,0 -N | 1 | 8) |
| 9 | 00 0215 958 1 | FLAT SEAL RING | 30X40X3 | 1 | 7) |
| 11 | 00 0794 414 1 | CONNECTION | MIT W.ABLAS ; KUGELH. ; | 1 | 8) |
| 12 | 00 0783 643 1 | PLUG | WASSER + G3/8" | 1 | 8) |
| 13 | 00 0687 625 1 | HEXAGON HEAD BOLT | M8X17 F. TANK WASSERABLA | 1 | 8) |
| 14 | 00 0783 652 0 | BALL-TYPE TAP | DN8-I-G3/8XA-G3/8 | 1 | 8) |
| 15 | 00 0783 644 1 | ADAPTOR | G3/8"- 1/2" SAE J 2044 | 1 | 8) |
| 16 | 00 0216 366 0 | O-RING | 10,50X1,5 NBR80 | 1 | 8) |
| 17 | 00 0783 658 0 | ANTI-ROTAT. LOCK | FUER 3/8" KUGELHAHN | 1 | 8) |
| 18 | 00 0038 915 0 | SOCKET | SV 80 B/40 | 1 | |
| 19 | 00 0217 460 0 | O-RING | 18,64X3,53 -N | 1 | |
| 20 | 00 0783 648 2 | BLIND PLUG | | 1 | 8) |
| 20 | 00 0794 999 1 | SUCTION TUBE | 600 LTR | 1 | 7) |
| 21 | 00 0217 460 0 | O-RING | 18,64X3,53 -N | 1 | 1) |
| 21 | 00 0211 091 2 | O-RING | 12 X 2 NBR 80 | 1 | 6) |
| 22 | 00 0217 460 0 | O-RING | 18,64X3,53 -N | 1 | |
| 23 | 00 0217 507 0 | PIPE BRACKET | NW 7,5 | 1 | 1) |
| 24 | 00 0136 529 0 | PVC-HOSE | 4+0,1X6X10000 | 1 | 9) |
| 25 | 00 0211 701 0 | O-RING | 91,67X3,53-N | 1 | |
| 26 | 00 0783 648 2 | BLIND PLUG | | 2 | 1) |
| 27 | 00 0794 417 2 | VENTILATION | | 1 | 1) |

| | | |
|-----------|--------------------|--------------------------------|
| 1) | machine no. | + from 58302079 |
| 2) | machine no. | + from 58301467 up to 58302078 |
| 3) | Remarks | Cpl. up to no. 58301466 |
| 4) | Remarks | Ventilation |
| 5) | Remarks | LOCKING |
| 6) | machine no. | + from 58300011 up to 58302078 |
| 7) | Remarks | up to no. 58301466 |
| 8) | Remarks | from no. 583001467 |
| 9) | Remarks | 2800 mm long |

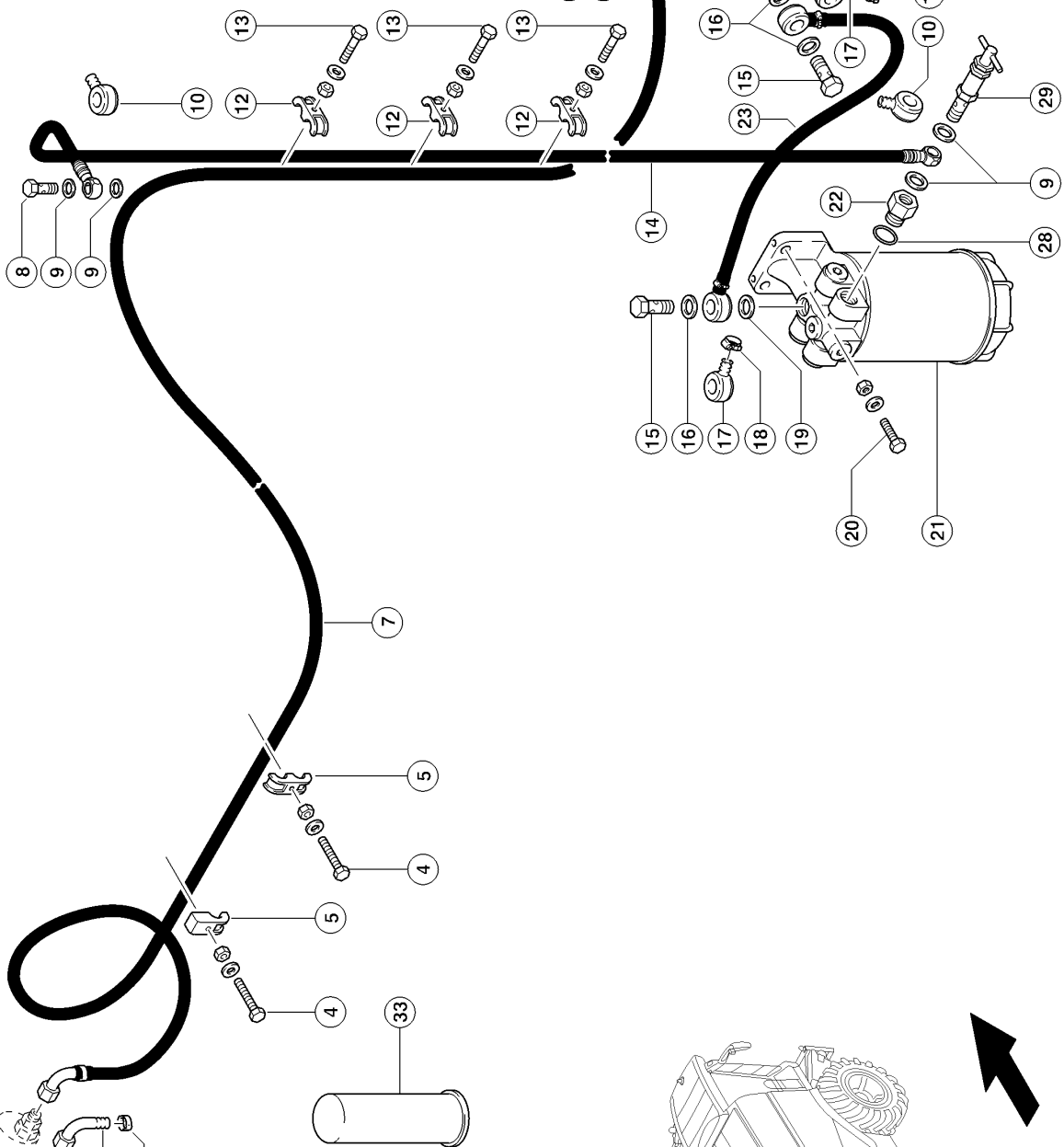


ENGINE CAT C9, 3126B; FUEL SYSTEM, FUEL 1)

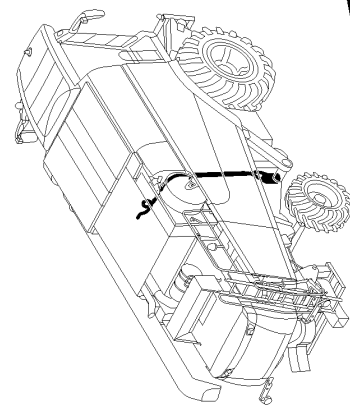
| Pos. | Part No. | Description | Dimension | Quantity | Conditions |
|------|----------------------|-------------------|-----------------------------|----------|------------|
| 1 | 00 0796 220 1 | CONNECTION | SWE90-L15-12 | 1 | |
| 2 | 00 0242 442 0 | HEXAGON HEAD BOLT | (N90-M22X1, M 6X30 | 3 | |
| 2 | 00 0239 386 0 | CONTACT WASHER | A 6 | 3 | |
| 2 | 00 0236 169 0 | HEXAGONAL NUT | M6 | 3 | |
| 3 | 00 0715 242 0 | CLAMP | A 15 | 3 | |
| 4 | 00 0363 204 1 | FUEL FILTER | | 1 | 2) |
| 6 | 00 0796 197 0 | FUEL PIPE | LG 3500 MM | 1 | 3) |
| 7 | 00 0096 030 0 | HOLLOW SCREW | 12 - M16X1,5 (12-3 ZULÄS | 1 | |
| 8 | 00 0216 465 0 | SEALING RING | D 16X22 | 2 | |
| 9 | 00 0216 458 0 | CONNECTION | R16-12 | 2 | 4) |
| 10 | 00 0715 241 0 | DOUBLE CLAMP | B 15 | 3 | |
| 11 | 00 0235 505 0 | HEXAGON HEAD BOLT | M06X30 | 3 | |
| 11 | 00 0239 386 0 | CONTACT WASHER | A 6 | 3 | |
| 11 | 00 0236 169 0 | HEXAGONAL NUT | M6 | 3 | |
| 12 | 00 0096 030 0 | HOLLOW SCREW | 12 - M16X1,5 (12-3 ZULÄS | 1 | |
| 13 | 00 0545 906 0 | SCREW UNION | M22X1.5/M16X1.5 | 2 | 5) |
| 14 | 00 0238 451 0 | O-RING | 19,3 X2,4 -N | 2 | 5) |
| 15 | 00 0216 465 0 | SEALING RING | D 16X22 | 4 | |
| 16 | 00 0216 458 0 | CONNECTION | R16-12 | 1 | |
| 17 | 00 0237 442 0 | HEXAGON HEAD BOLT | M8X25 | 2 | |
| 17 | 00 0239 393 1 | CONTACT WASHER | B 8 -8.2X22X1,9 | 2 | |
| 17 | 00 0236 170 0 | HEXAGONAL NUT | M8 | 2 | |
| 18 | 00 0796 211 0 | FUEL FILTER | | 1 | 6) |
| 18 | 00 0796 212 1 | SEPARATOR | | 1 | 7) |
| 19 | 00 0743 693 0 | FUEL PIPE | | 1 | 8) |
| 19 | 00 0743 760 0 | FUEL HOSE | TANK-FILTER LG 1680 | 1 | 9) |
| 20 | 00 0761 583 1 | LIMITATION VALVE | M16X1,5 | 1 | |
| 21 | 00 0360 431 1 | FUEL PUMP | | 1 | 10) |

| | | |
|------------|--------------------|--|
| 1) | machine no. | + up to 58301741 |
| 2) | Remarks | FILTER GP-FUEL |
| 3) | Remarks | 3500 mm long |
| 4) | Remarks | to No. 58300039 |
| 5) | Remarks | P06 / 10 |
| 6) | Remarks | P06 / 20 see illustration plate 966 |
| 7) | Remarks | P06 / 10 see illustration plate 966 |
| 8) | Remarks | from No. 58300040 |
| 9) | Remarks | 1680 mm long to No. 58300039 |
| 10) | Remarks | only with Cat C9 engine |

964A



17238z02
LEXION 530-510



143743/02

Thank you so much for reading.
Please click the “Buy Now!”
button below to download the
complete manual.



After you pay.

You can download the most
perfect and complete manual in
the world immediately.

Our support email:

ebooklibonline@outlook.com