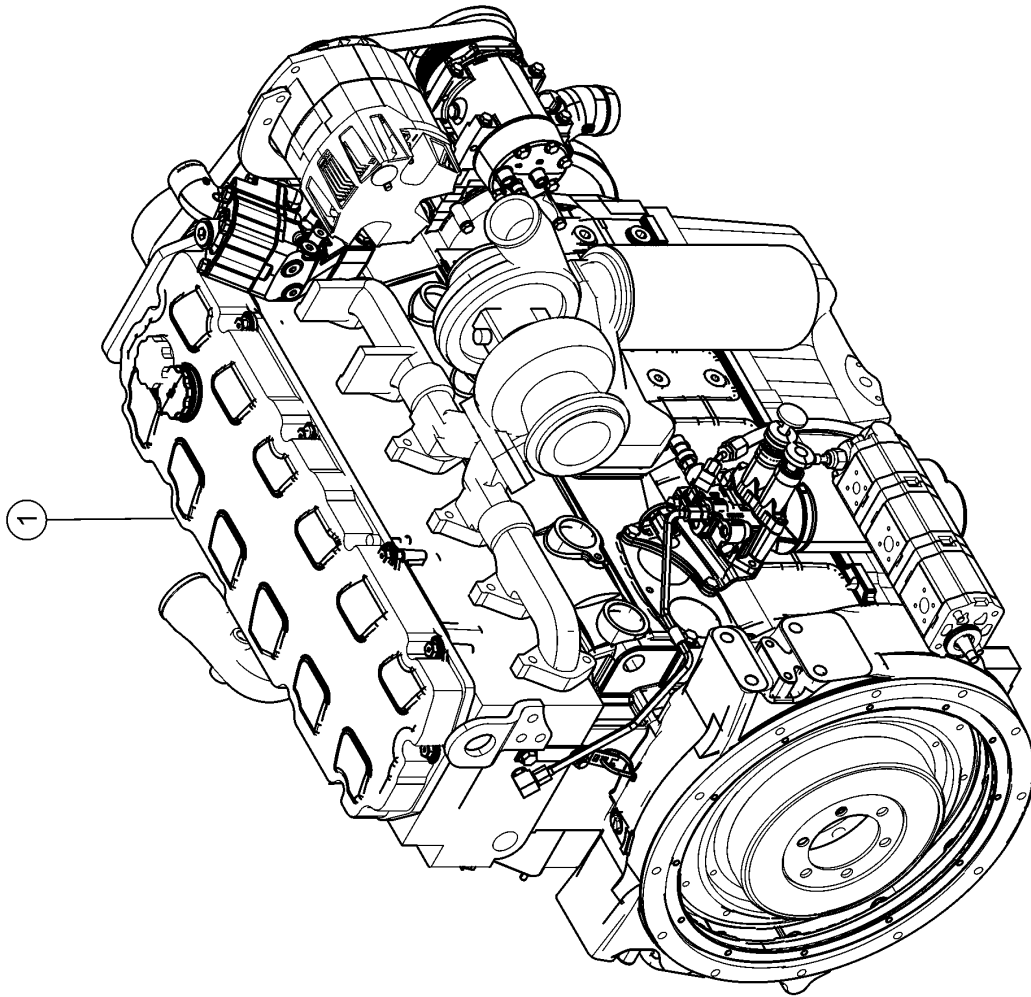


1000

19141Z00



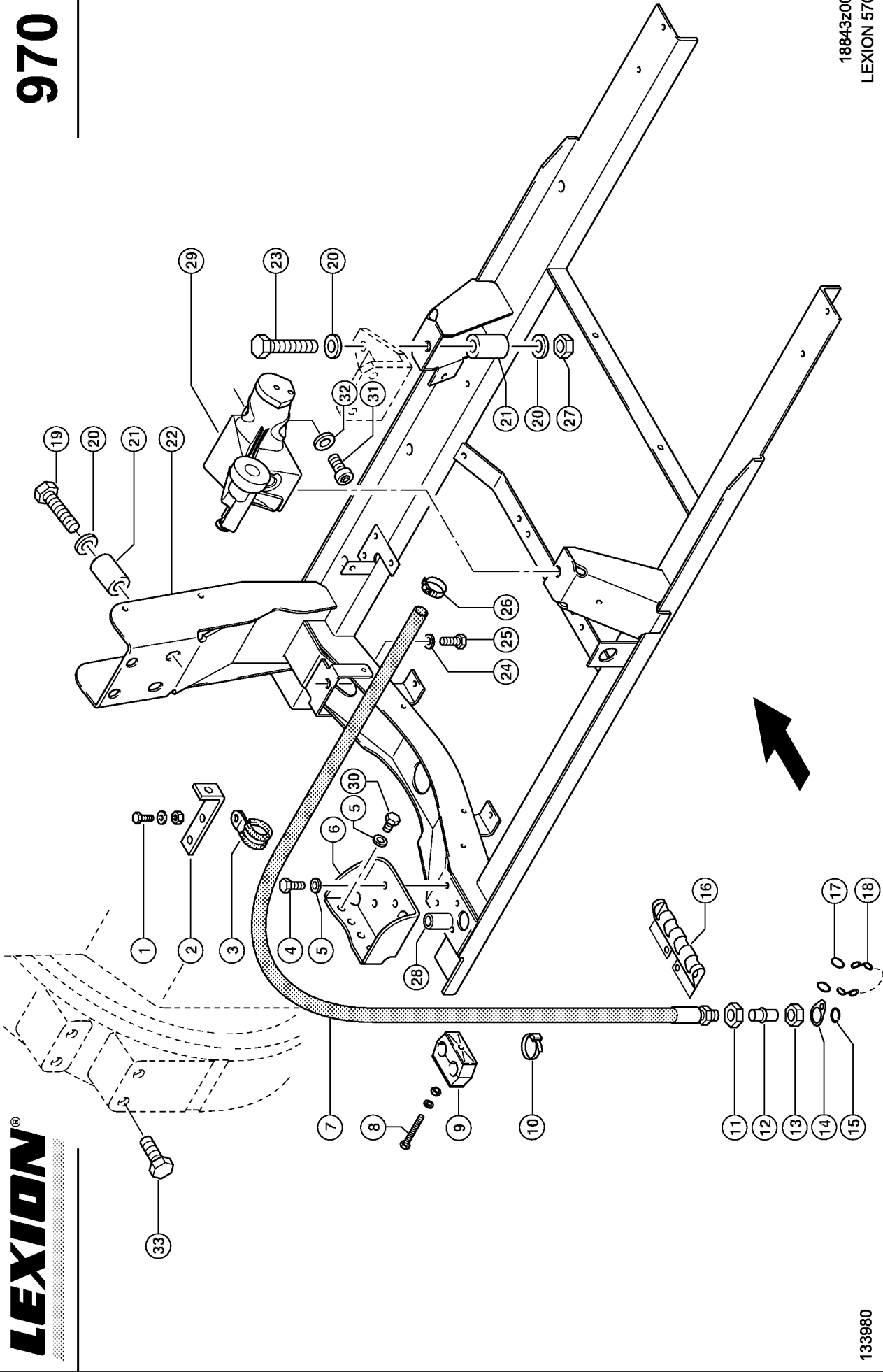
LEXION®

010 COMPLETE ENGINE

| Pos. | Part No. | Description | Dimension | Quantity | Conditions |
|-------------|----------------------|--------------------|-----------------------------------|-----------------|-------------------|
| 1 | 00 0798 013 1 | ENGINE | C9 261KW TIER3 | 1 | 1) |
| 1) | Equipment | MD_P02_0650 | CAT C9 engine (EWG258kW/ECE243kW) | | |

970

18843Z00
LEXION 570



133980

CAT C9 ; BASE, OIL DRAIN HOSE

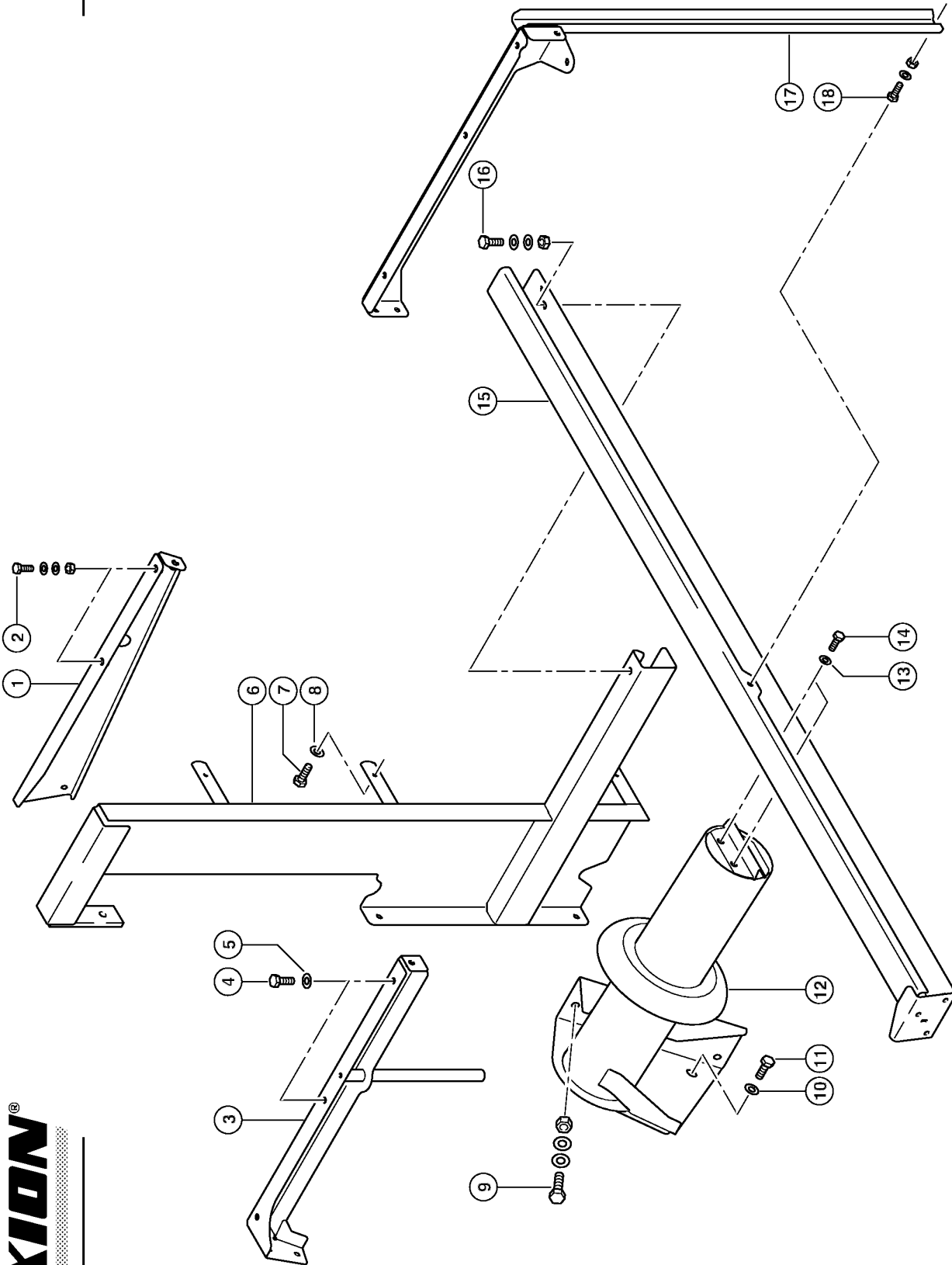
| Pos. | Part No. | Description | Dimension | Quantity | Conditions |
|------|----------------------|-------------------|-----------------------------|----------|------------|
| 1 | 00 0236 200 0 | HEXAGON HEAD BOLT | M8X20 | 1 | 1) |
| 1 | 00 0239 387 0 | CONTACT WASHER | A8-8,2X18X1,4 | 1 | |
| 1 | 00 0236 170 0 | HEXAGONAL NUT | M8 | 1 | |
| 2 | 00 0073 012 1 | ANGLE | 30X5X160 | 1 | |
| 3 | 00 0215 394 0 | HOLDER CLAMP | D1-24X20 | 2 | |
| 4 | 00 0237 461 0 | HEXAGON HEAD BOLT | M12X30 | 4 | |
| 5 | 00 0239 389 0 | CONTACT WASHER | A12 | 8 | |
| 6 | 00 0760 949 2 | SUPPORT REAR | | 1 | |
| 7 | 00 0350 390 1 | OIL DRAIN HOSE | | 1 | |
| 8 | 00 0235 522 0 | HEXAGON HEAD BOLT | M8 X 65 | 2 | |
| 8 | 00 0239 387 0 | CONTACT WASHER | A8-8,2X18X1,4 | 2 | |
| 8 | 00 0236 170 0 | HEXAGONAL NUT | M8 | 2 | |
| 9 | 00 0689 060 0 | CLAMP | Z KP-3-R-25-25-PA | 1 | |
| 10 | 00 0697 798 0 | CABLE TIE | 7,6X290X1,9 | 2 | |
| 11 | 00 0236 327 0 | HEXAGONAL NUT | M22X1,5 | 1 | |
| 12 | 00 0077 528 1 | DRAIN FITTING | D18,1X51,5 | 1 | |
| 13 | 00 0633 589 1 | UNION NUT | A3 L15 | 1 | |
| 14 | 00 0077 529 0 | STRAP | 1,0X0026X0041 | 1 | |
| 15 | 00 0215 080 0 | SNAP RING | A 14 | 1 | |
| 16 | 00 0771 504 0 | SUPPORT | 3,0X126X230 | 1 | |
| 17 | 00 0002 846 0 | RING | SPIRALFÖRMIG OFFEN2 16 X | | |
| 18 | 00 0002 848 0 | KNOT CHAIN | 1,8X 25X 6GL | 1 | |
| 19 | 00 0215 631 0 | HEXAGON HEAD BOLT | 3/4-10UNC-2AX4 1/2 | 4 | |
| 20 | 00 0212 191 0 | CONTACT WASHER | A20 | 8 | |
| 21 | 00 0796 231 0 | BUSHING | D42D20.5X62 | 6 | |
| 22 | 00 0761 900 2 | ENGINE MOUNTING | C-9 - TYP584 | 1 | |
| 23 | 00 0211 186 0 | HEXAGON HEAD BOLT | M20X130 | 2 | |
| 24 | 00 0239 389 0 | CONTACT WASHER | A12 | 1 | |
| 25 | 00 0211 465 0 | HEX.HEAD BOLT | 1/2-13UNC-2AX1 1/2 | 1 | |
| 26 | 00 0408 554 2 | HOSE CLAMP | W.ERS.D.4085543 | 1 | |
| 27 | 00 0237 521 0 | HEX.NUT | M20 | 2 | |
| 28 | 00 0796 273 0 | BUSHING | D32/D18X50 | 2 | |
| 29 | 00 0796 942 1 | ENGINE SUPPORT | | 1 | |
| 30 | 00 0237 458 0 | HEXAGON HEAD BOLT | M12X20 | 4 | |
| 31 | 00 0214 367 0 | SOCKET HEAD SCREW | M16X 40 | 4 | |
| 32 | 00 0215 291 1 | WASHER | 16 -16,2X24,6X3,5 | 4 | |
| 33 | 00 0214 077 0 | HEXAGON HEAD BOLT | 3/4-10X2 | 2 | |

1) Remarks

1 set = 2 each

782

18501Z00
LEXION 570



LEXION[®]

LEXION 570

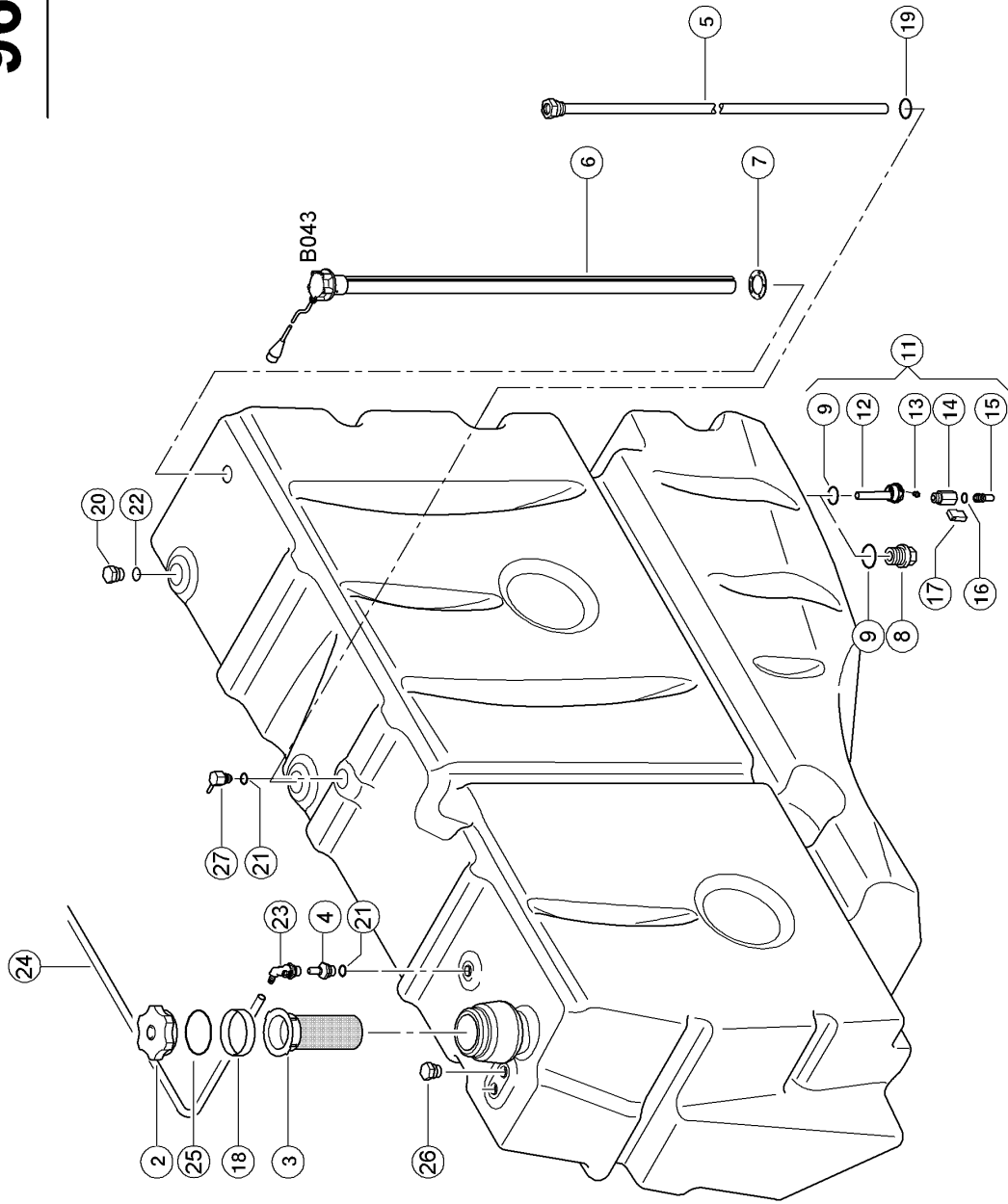
133971

BRACKET FOR FUEL TANK

| Pos. | Part No. | Description | Dimension | Quantity | Conditions |
|-------------|----------------------|--------------------|--------------------|-----------------|-------------------|
| 1 | 00 0794 842 2 | FASTENER | 1700 | 1 | |
| 2 | 00 0237 370 0 | HEXAGON HEAD BOLT | M8X30 | 2 | |
| 2 | 00 0239 387 0 | CONTACT WASHER | A8-8,2X18X1,4 | 4 | |
| 2 | 00 0236 170 0 | HEXAGONAL NUT | M8 | 2 | |
| 3 | 00 0794 856 2 | SUPPORT | 1700 / 800 LTR | 1 | |
| 4 | 00 0237 453 0 | HEXAGON HEAD BOLT | M10X30 | 2 | |
| 5 | 00 0239 388 0 | CONTACT WASHER | A10-10,2X22,25X1,6 | 2 | |
| 6 | 00 0794 858 2 | SUPPORT | | 1 | |
| 7 | 00 0237 453 0 | HEXAGON HEAD BOLT | M10X30 | 3 | |
| 8 | 00 0239 388 0 | CONTACT WASHER | A10-10,2X22,25X1,6 | 3 | |
| 9 | 00 0237 461 0 | HEXAGON HEAD BOLT | M12X30 | 4 | |
| 9 | 00 0239 387 0 | CONTACT WASHER | A8-8,2X18X1,4 | 8 | |
| 9 | 00 0236 172 0 | HEXAGONAL NUT | M12 | 4 | |
| 10 | 00 0239 388 0 | CONTACT WASHER | A10-10,2X22,25X1,6 | 1 | |
| 11 | 00 0237 453 0 | HEXAGON HEAD BOLT | M10X30 | 1 | |
| 12 | 00 0794 854 1 | MAIN FRAME | 1700 | 1 | |
| 13 | 00 0239 387 0 | CONTACT WASHER | A8-8,2X18X1,4 | 2 | |
| 14 | 00 0237 439 0 | HEXAGON HEAD BOLT | M8X16 | 2 | |
| 15 | 00 0794 855 1 | SUPPORT | | 1 | |
| 16 | 00 0237 453 0 | HEXAGON HEAD BOLT | M10X30 | 1 | |
| 16 | 00 0239 388 0 | CONTACT WASHER | A10-10,2X22,25X1,6 | 2 | |
| 16 | 00 0236 171 0 | HEXAGONAL NUT | M10 | 1 | |
| 17 | 00 0794 857 1 | SUPPORT | 1700 | 1 | |
| 18 | 00 0237 439 0 | HEXAGON HEAD BOLT | M8X16 | 3 | |
| 18 | 00 0239 387 0 | CONTACT WASHER | A8-8,2X18X1,4 | 4 | |
| 18 | 00 0236 170 0 | HEXAGONAL NUT | M8 | 1 | |

LEXION®

963



18100z05
LEXION 570

133982/03

FUEL TANK

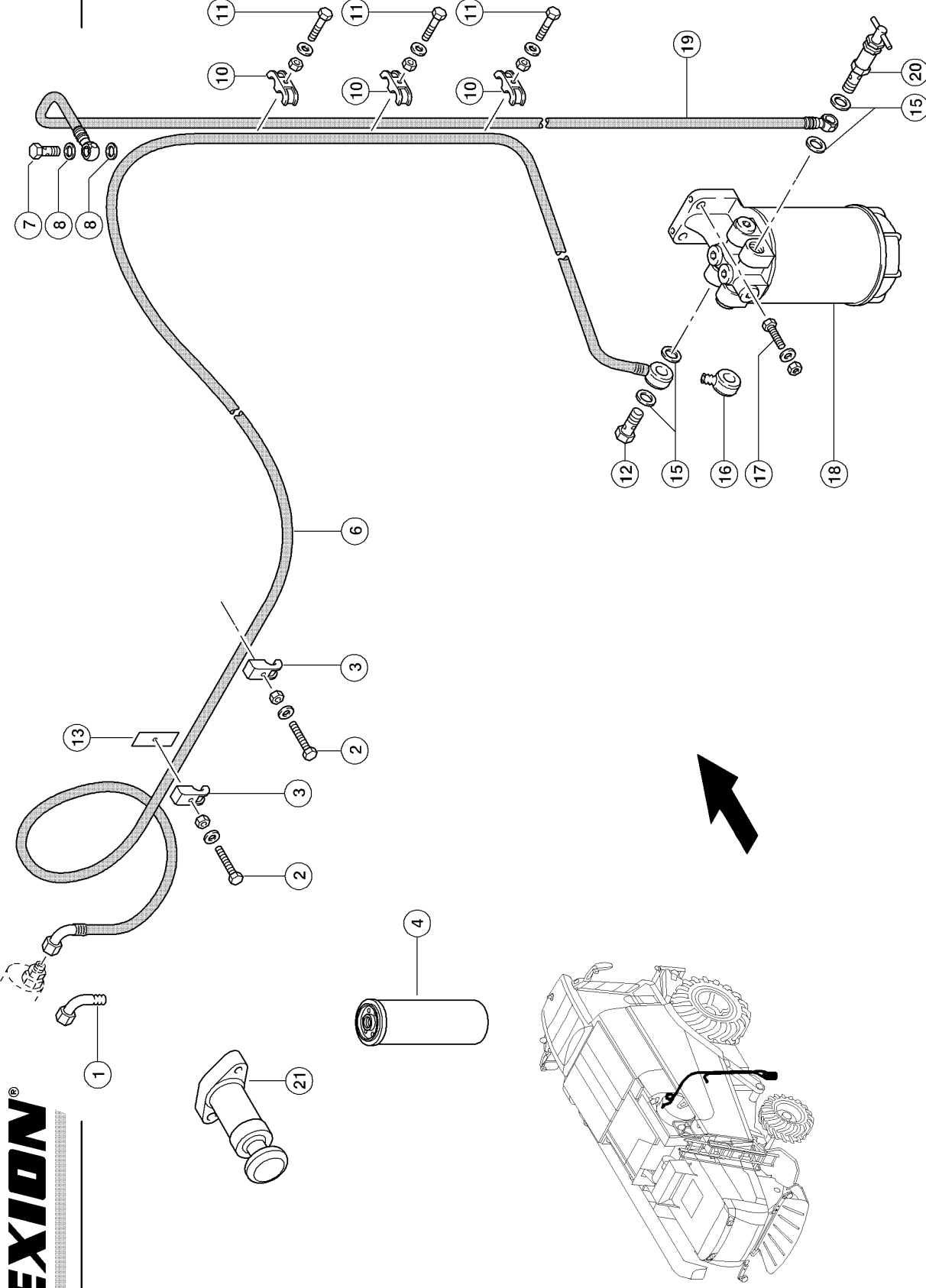
| Pos. | Part No. | Description | Dimension | Quantity | Conditions |
|------|----------------------|-------------------|---------------------------------|----------|------------|
| 1 | 00 0794 918 5 | FUEL TANK | 800 NUR ET | 1 | 1) |
| 1 | 00 0794 416 2 | FUEL TANK | 800LTR. OHNE Z-TANK | 1 | 2) |
| 2 | 00 0624 003 1 | CAP | DV 80 GL | 1 | 3) |
| 2 | 00 0217 508 0 | CAP | DV 80 GL OHNE LÜFTUNG | 1 | |
| 2 | 00 0177 621 0 | CAP | D80 BELUEFTET, ABSCHLIES | 1 | 4) |
| 3 | 00 0736 238 0 | TANK FILTER | | 1 | |
| 4 | 00 0794 417 2 | VENTILATION | | 1 | 5) |
| 5 | 00 0794 998 1 | SUCTION TUBE | 800 LTR | 2 | |
| 6 | 00 0016 596 3 | LEVEL INDICATOR | L=1320MM | 1 | 6) |
| 6 | 00 0794 996 0 | LEVEL INDICATOR | L=1340MM D=54MM | 1 | 7) |
| 6 | 00 0783 653 0 | PT SCREW | 6ST 4X40 | 1 | |
| 7 | 00 0794 993 0 | GASKET | VORRATSGEBER | 1 | |
| 8 | 00 0687 607 0 | DRAIN SCREW | M33X2 | 1 | 8) |
| 9 | 00 0217 459 1 | O-RING | 27X4,0 -N | 1 | 9) |
| 9 | 00 0215 958 1 | FLAT SEAL RING | 30X40X3 | 1 | 10) |
| 11 | 00 0794 414 1 | CONNECTION | MIT W.ABLAS ; KUGELH. ; | 1 | 11) |
| 12 | 00 0783 643 1 | PLUG | WASSER + G3/8" | 1 | 11) |
| 13 | 00 0687 625 1 | HEXAGON HEAD BOLT | M8X17 F. TANK | 1 | 11) |
| 14 | 00 0783 652 0 | BALL-TYPE TAP | WASSERABLA DN8-I-G3/8XA-G3/8 | 1 | 11) |
| 15 | 00 0783 644 1 | ADAPTOR | G3/8"- 1/2" SAE J 2044 | 1 | 11) |
| 16 | 00 0216 366 0 | O-RING | 10,50X1,5 NBR80 | 1 | 11) |
| 17 | 00 0783 658 0 | ANTI-ROTAT. LOCK | FUER 3/8" KUGELHAHN | 1 | 9) |
| 18 | 00 0038 915 0 | SOCKET | SV 80 B/40 | 1 | |
| 19 | 00 0217 460 0 | O-RING | 18,64X3,53 -N | 1 | |
| 20 | 00 0783 648 2 | BLIND PLUG | | 1 | 12) |
| 20 | 00 0794 998 1 | SUCTION TUBE | 800 LTR | 1 | 13) |
| 21 | 00 0217 460 0 | O-RING | 18,64X3,53 -N | 1 | 5) |
| 21 | 00 0211 091 2 | O-RING | 12 X 2 NBR 80 | 1 | 2) |
| 22 | 00 0217 460 0 | O-RING | 18,64X3,53 -N | 1 | |
| 23 | 00 0217 501 0 | CONNECTOR | NQS 1/2" - 6 X 90 GRAD | 1 | 5) |
| 24 | 00 0136 529 0 | PVC-HOSE | 4+0,1X6X10000 | 1 | 14) |
| 25 | 00 0211 701 0 | O-RING | 91,67X3,53-N | 1 | |
| 26 | 00 0783 648 2 | BLIND PLUG | | 2 | 1) |
| 27 | 00 0794 995 0 | BREATHER VALVE | | 1 | 2) |

| | | |
|-----------|----------------------------------|--------------------------------|
| 1) | machine no. | + from 57400122 |
| 2) | machine no. | + from 57400011 up to 57400121 |
| 3) | Remarks | Ventilation |
| 4) | Remarks | LOCKING |
| 5) | machine no. | + from 57400122 up to 57499999 |
| 6) | machine no. CCN | + from 57400122 |
| | | CCN-B043 fuel level sensor |
| 7) | machine no. CCN | + from 57400011 up to 57400121 |
| | | CCN-B043 fuel level sensor |
| 8) | Remarks | Up To No. 57400050 |

FUEL TANK

| | |
|------------------------|--|
| 9) machine no. | + from 57400096 up to 57499999 |
| 10) machine no. | + from 57400011 up to 57400095 |
| 11) Remarks | From No. 57400051 |
| 12) machine no. | + from 57400051 |
| 13) machine no. | + from 57400011 up to 57400050 |
| 14) machine no. | + from 57400122 up to 57499999 2800 mm long |

964



18380Z03
LEXION 570

LEXION®

133983/01

ENGINE CAT C9; FUEL SYSTEM, FUEL COOLER 1)

| Pos. | Part No. | Description | Dimension | Quantity | Conditions |
|------|----------------------|-------------------|-----------------------------|----------|------------|
| 1 | 00 0796 209 1 | CONNECTION | SWE-10X12 | 1 | |
| 2 | 00 0242 442 0 | HEXAGON HEAD BOLT | M 6X30 | 3 | |
| 2 | 00 0239 386 0 | CONTACT WASHER | A 6 | 3 | |
| 2 | 00 0236 169 0 | HEXAGONAL NUT | M6 | 3 | |
| 3 | 00 0715 242 0 | CLAMP | A 15 | 3 | |
| 4 | 00 0363 204 1 | FUEL FILTER | | 1 | |
| 6 | 00 0796 197 0 | FUEL PIPE | LG 3500 MM | 1 | 2) |
| 7 | 00 0096 030 0 | HOLLOW SCREW | 12 - M16X1,5 (12-3 ZULÄS | 1 | |
| 8 | 00 0216 465 0 | SEALING RING | D 16X22 | 2 | |
| 10 | 00 0715 241 0 | DOUBLE CLAMP | B 15 | 3 | |
| 11 | 00 0235 505 0 | HEXAGON HEAD BOLT | M06X30 | 3 | |
| 11 | 00 0239 386 0 | CONTACT WASHER | A 6 | 3 | |
| 11 | 00 0236 169 0 | HEXAGONAL NUT | M6 | 3 | |
| 12 | 00 0096 030 0 | HOLLOW SCREW | 12 - M16X1,5 (12-3 ZULÄS | 1 | |
| 13 | 00 0656 255 0 | COUNTER PLATE | 25X3X46 | 1 | |
| 15 | 00 0216 465 0 | SEALING RING | D 16X22 | 4 | |
| 16 | 00 0216 458 0 | CONNECTION | R16-12 | 1 | |
| 17 | 00 0237 442 0 | HEXAGON HEAD BOLT | M8X25 | 2 | |
| 17 | 00 0239 393 1 | CONTACT WASHER | B 8 -8.2X22X1,9 | 2 | |
| 17 | 00 0236 170 0 | HEXAGONAL NUT | M8 | 2 | |
| 18 | 00 0796 211 0 | FUEL FILTER | | 1 | 3) |
| 19 | 00 0743 682 0 | FUEL PIPE | KPL | 1 | 4) |
| 20 | 00 0761 583 1 | LIMITATION VALVE | M16X1,5 | 1 | |
| 21 | 00 0360 431 1 | FUEL PUMP | | 1 | |

1) Equipment

machine no.

MD_P02_0650

CAT C9 engine (EWG258kW/ECE243kW)
+ from 57400011 up to 57400050**2) Remarks**

3500mm Long

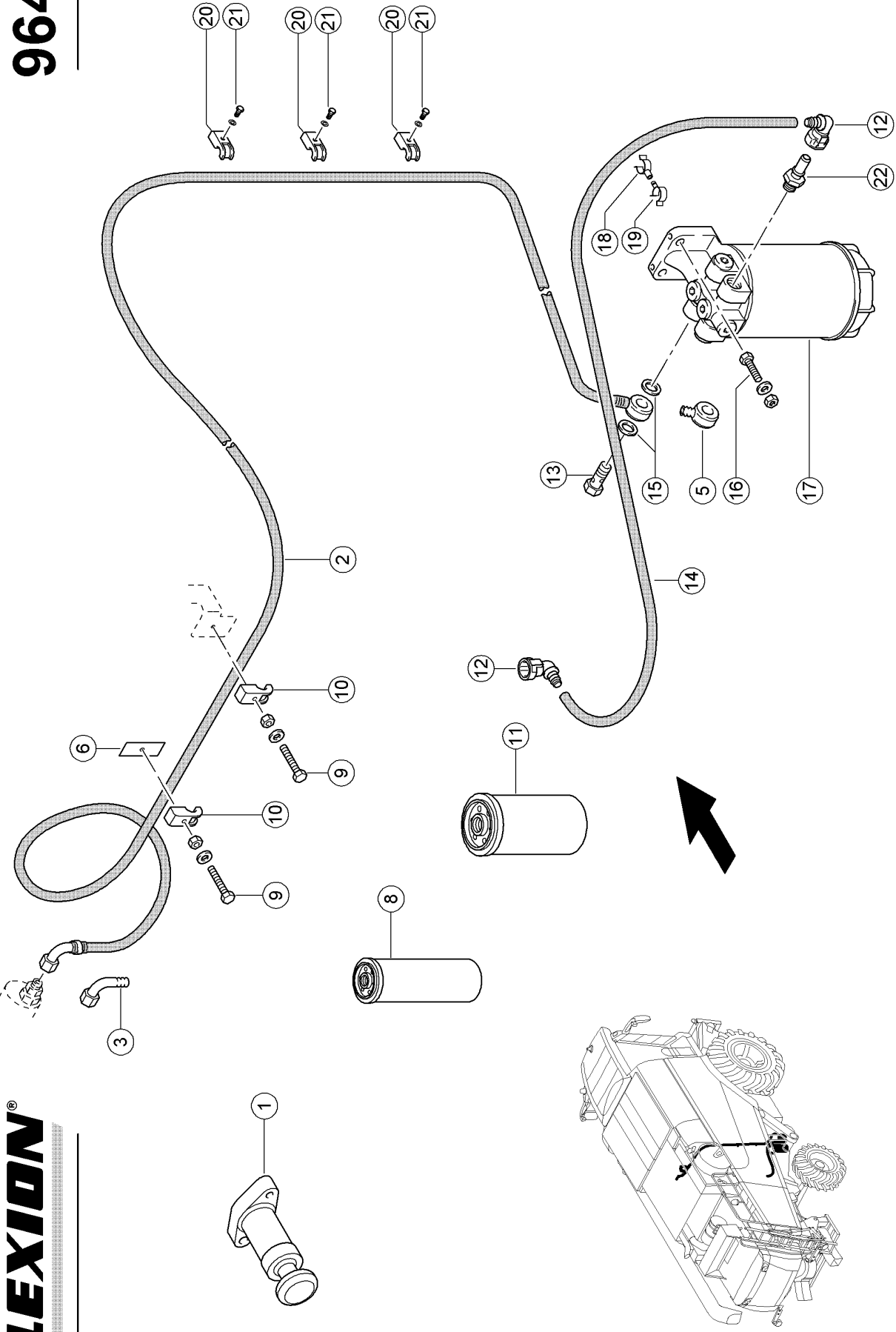
3) Remarks

See Illustration 966

4) Remarks

1900 mm long

964A



19110z00
LEXION 570

LEXION®

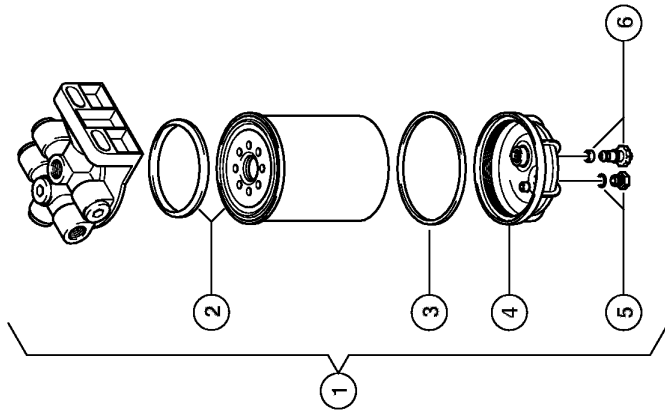
ENGINE CAT C9; FUEL SYSTEM, FUEL COOLER 1)

| Pos. | Part No. | Description | Dimension | Quantity | Conditions |
|------|----------------------|-------------------|---|----------|------------|
| 1 | 00 0360 431 1 | FUEL PUMP | | 1 | |
| 2 | 00 0796 197 0 | FUEL PIPE | LG 3500 MM | 1 | 2) |
| 3 | 00 0796 209 1 | CONNECTION | SWE-10X12 | 1 | |
| 5 | 00 0216 458 0 | CONNECTION | R16-12 | 1 | |
| 6 | 00 0656 255 0 | COUNTER PLATE | 25X3X46 | 1 | |
| 8 | 00 0363 204 1 | FUEL FILTER | | 1 | |
| 9 | 00 0242 442 0 | HEXAGON HEAD BOLT | M 6X30 | 2 | |
| 9 | 00 0239 386 0 | CONTACT WASHER | A 6 | 2 | |
| 9 | 00 0236 169 0 | HEXAGONAL NUT | M6 | 2 | |
| 10 | 00 0715 242 0 | CLAMP | A 15 | 2 | |
| 12 | 00 0798 863 0 | CONNECTOR | NORMAQUICK S NW | 2 | |
| 13 | 00 0096 030 0 | HOLLOW SCREW | 1/2"-10- 12 - M16X1,5 (12-3 ZULÄS | 1 | |
| 14 | 00 0799 121 1 | FUEL PIPE | TANK-FILTER | 1 | 3) |
| 15 | 00 0216 465 0 | SEALING RING | D 16X22 | 2 | |
| 16 | 00 0237 442 0 | HEXAGON HEAD BOLT | M8X25 | 2 | |
| 16 | 00 0239 393 1 | CONTACT WASHER | B 8 -8.2X22X1,9 | 2 | |
| 16 | 00 0236 170 0 | HEXAGONAL NUT | M8 | 2 | |
| 17 | 00 0796 211 0 | FUEL FILTER | | 1 | 4) |
| 18 | 00 0796 375 0 | PIPE BRACKET | D 11 | 1 | |
| 19 | 00 0796 374 0 | PIPE BRACKET | D 11 | 1 | |
| 20 | 00 0715 242 0 | CLAMP | A 15 | 3 | |
| 21 | 00 0235 505 0 | HEXAGON HEAD BOLT | M06X30 | 3 | |
| 21 | 00 0239 386 0 | CONTACT WASHER | A 6 | 3 | |
| 22 | 00 0798 664 0 | ADAPTER | M16X1,5 / 1/2" SAE J 204 | 1 | |

| | | |
|---------------------|-------------|--|
| 1) Equipment | MD_P02_0650 | CAT C9 engine (EWG258kW/ECE243kW) + from 57400051 |
| 2) Remarks | | with Item 3 - 5 |
| 3) Remarks | | with Item 12 |
| 4) Remarks | | Siehe Bildtafel 86 |

966

18379z00
LEXION 570



LEXION[®]

LEXION 570

133984

FUEL FILTER ASSEMBLIES

| Pos. | Part No. | Description | Dimension | Quantity | Conditions |
|-------------|----------------------|--------------------|------------------|-----------------|---|
| 1 | 00 0796 211 0 | FUEL FILTER | | 1 | |
| 2 | 00 0796 213 0 | FILTER ELEMENT | | 1 | |
| 3 | 00 0796 789 0 | SEALING RING | | 1 | |
| 4 | 00 1134 213 0 | POT | | 1 | 1) |
| 4 | 00 0796 788 0 | WATER CONTAINER | | 1 | 2) |
| 5 | 00 0796 791 0 | SCREW PLUG | | 1 | 3) |
| 6 | 00 0796 790 0 | PLUG | | 1 | 3) |
| 1) | machine no. | | | | + from 57400096 up to 57499999 |
| 2) | machine no. | | | | + from 57400011 up to 57400095 With Item 3, 5, 6 |
| 3) | machine no. | | | | + from 57400011 up to 57400095 |

Thank you so much for reading.
Please click the “Buy Now!”
button below to download the
complete manual.



After you pay.

You can download the most
perfect and complete manual in
the world immediately.

Our support email:

ebooklibonline@outlook.com