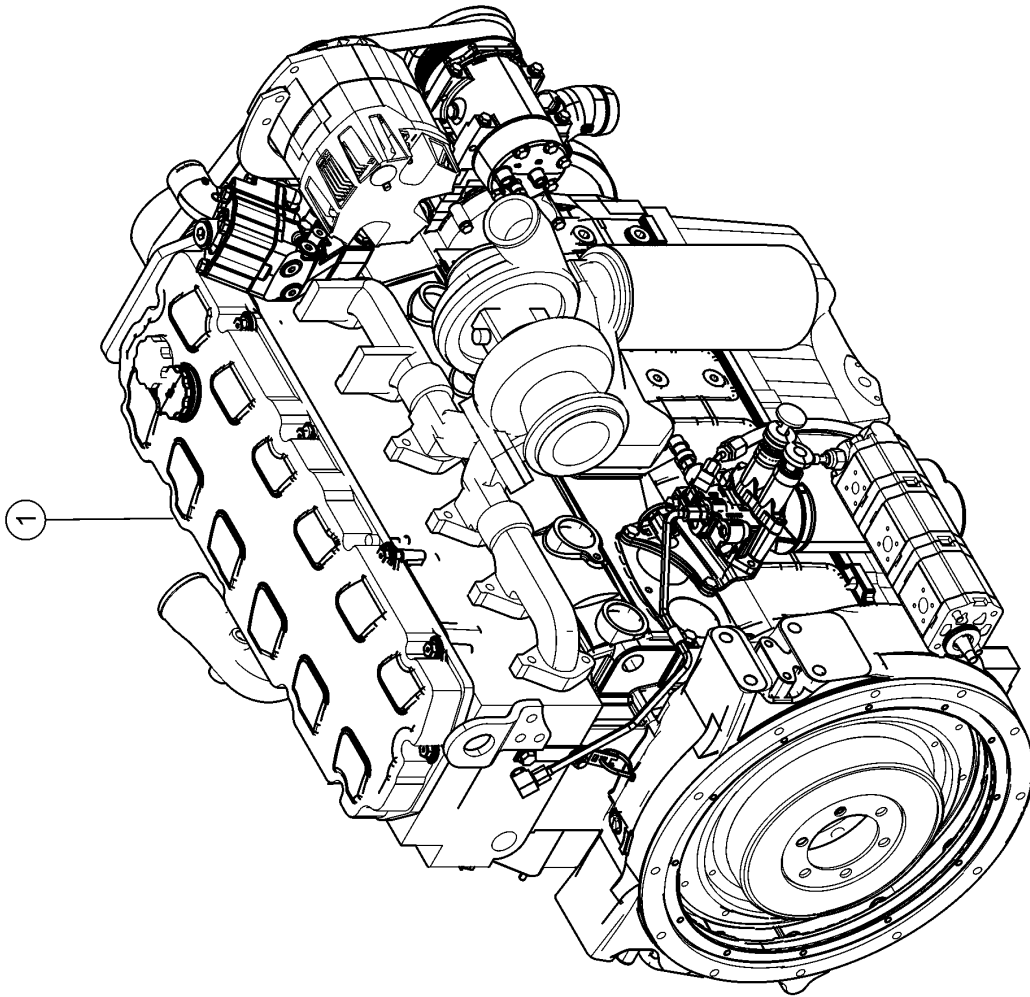


1000

19141Z00



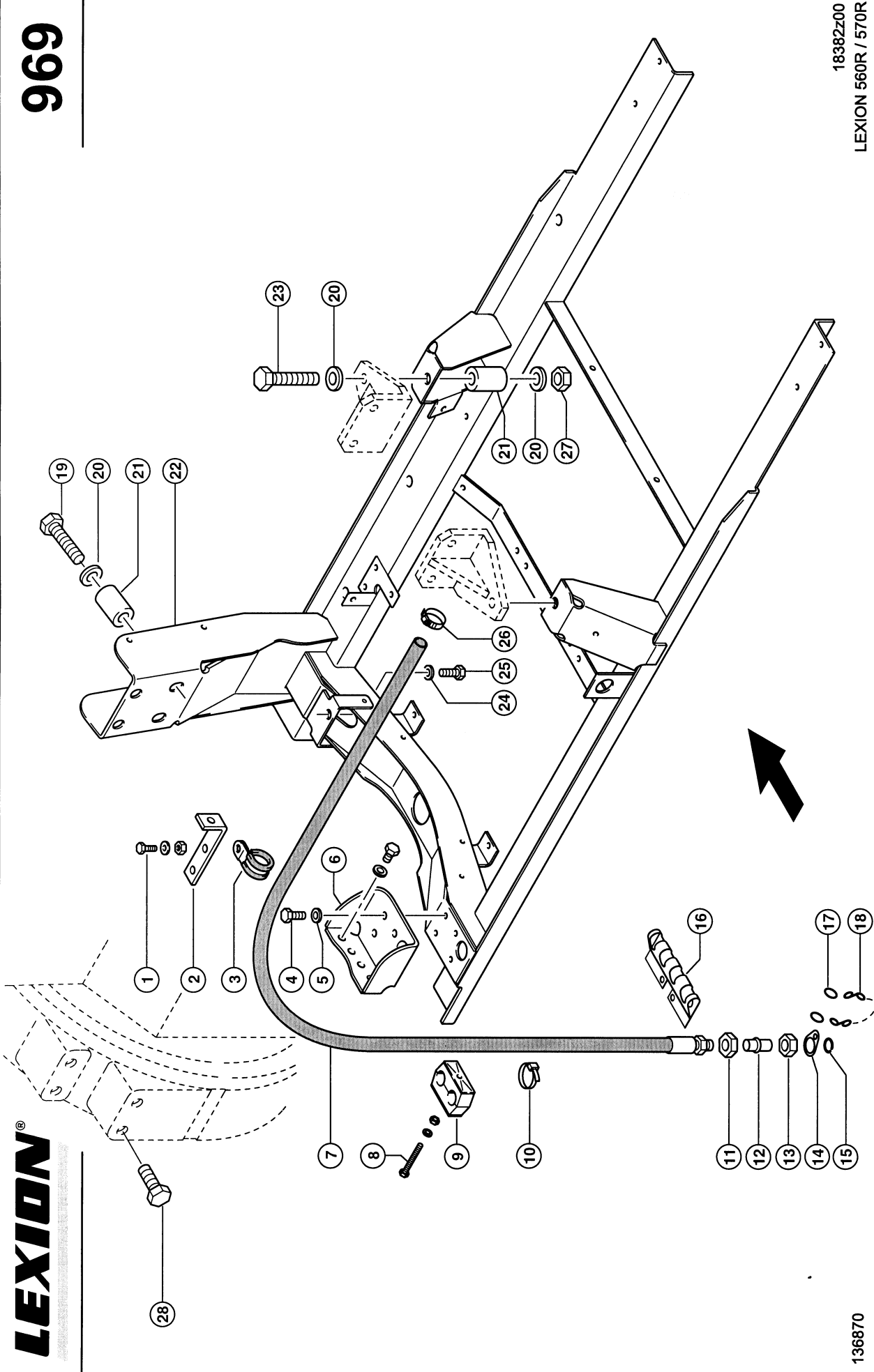
LEXION®

010 COMPLETE ENGINE

Pos.	Part No.	Description	Dimension	Quantity	Conditions
1	00 0798 012 1	ENGINE	C9 232KW TIER3	1	1)
1)	Equipment	MD_P02_0660	CAT C9 engine (EWG230kW/ECE217kW)		

969

18382Z00
LEXION 560R / 570R



LEXION®

136870

ENGINE CAT C9; BASE, OIL DRAIN HOSE 1)

Pos.	Part No.	Description	Dimension	Quantity	Conditions
1	00 0236 200 0	HEXAGON HEAD BOLT	M8X20	1	
1	00 0239 387 0	CONTACT WASHER	A8-8,2X18X1,4	1	
1	00 0236 170 0	HEXAGONAL NUT	M8	1	
2	00 0073 012 1	ANGLE	30X5X160	1	
3	00 0215 394 0	HOLDER CLAMP	D1-24X20	2	
4	00 0237 461 0	HEXAGON HEAD BOLT	M12X30	4	
5	00 0239 389 0	CONTACT WASHER	A12	4	
6	00 0760 949 2	SUPPORT REAR		1	
7	00 0350 390 1	OIL DRAIN HOSE		1	
8	00 0235 522 0	HEXAGON HEAD BOLT	M8 X 65	2	
8	00 0239 387 0	CONTACT WASHER	A8-8,2X18X1,4	2	
8	00 0236 170 0	HEXAGONAL NUT	M8	2	
9	00 0689 060 0	CLAMP	Z KP-3-R-25-25-PA	1	
10	00 0697 798 0	CABLE TIE	7,6X290X1,9	2	
11	00 0236 327 0	HEXAGONAL NUT	M22X1,5	1	
12	00 0077 528 1	DRAIN FITTING	D18,1X51,5	1	
13	00 0633 589 1	UNION NUT	A3 L15	1	
14	00 0077 529 0	STRAP	1,0X0026X0041	1	
15	00 0215 080 0	SNAP RING	A 14	1	
16	00 0771 504 0	SUPPORT	3,0X126X230	1	
17	00 0002 846 0	RING	SPIRALFÖRMIG OFFEN2 16 X		
18	00 0002 848 0	KNOT CHAIN	1,8X 25X 6GL	1	
19	00 0215 631 0	HEXAGON HEAD BOLT	3/4-10UNC-2AX4 1/2	4	
20	00 0212 191 0	CONTACT WASHER	A20	8	
21	00 0796 231 0	BUSHING	D42D20.5X62	6	
22	00 0353 682 2	ENGINE MOUNTING	C9 TYP 583	1	
23	00 0211 186 0	HEXAGON HEAD BOLT	M20X130	2	
24	00 0239 389 0	CONTACT WASHER	A12	1	
25	00 0211 465 0	HEX.HEAD BOLT	1/2-13UNC-2AX1 1/2	1	
26	00 0408 554 2	HOSE CLAMP	W.ERS.D.4085543	1	
27	00 0237 521 0	HEX.NUT	M20	2	
28	00 0214 077 0	HEXAGON HEAD BOLT	3/4-10X2	2	

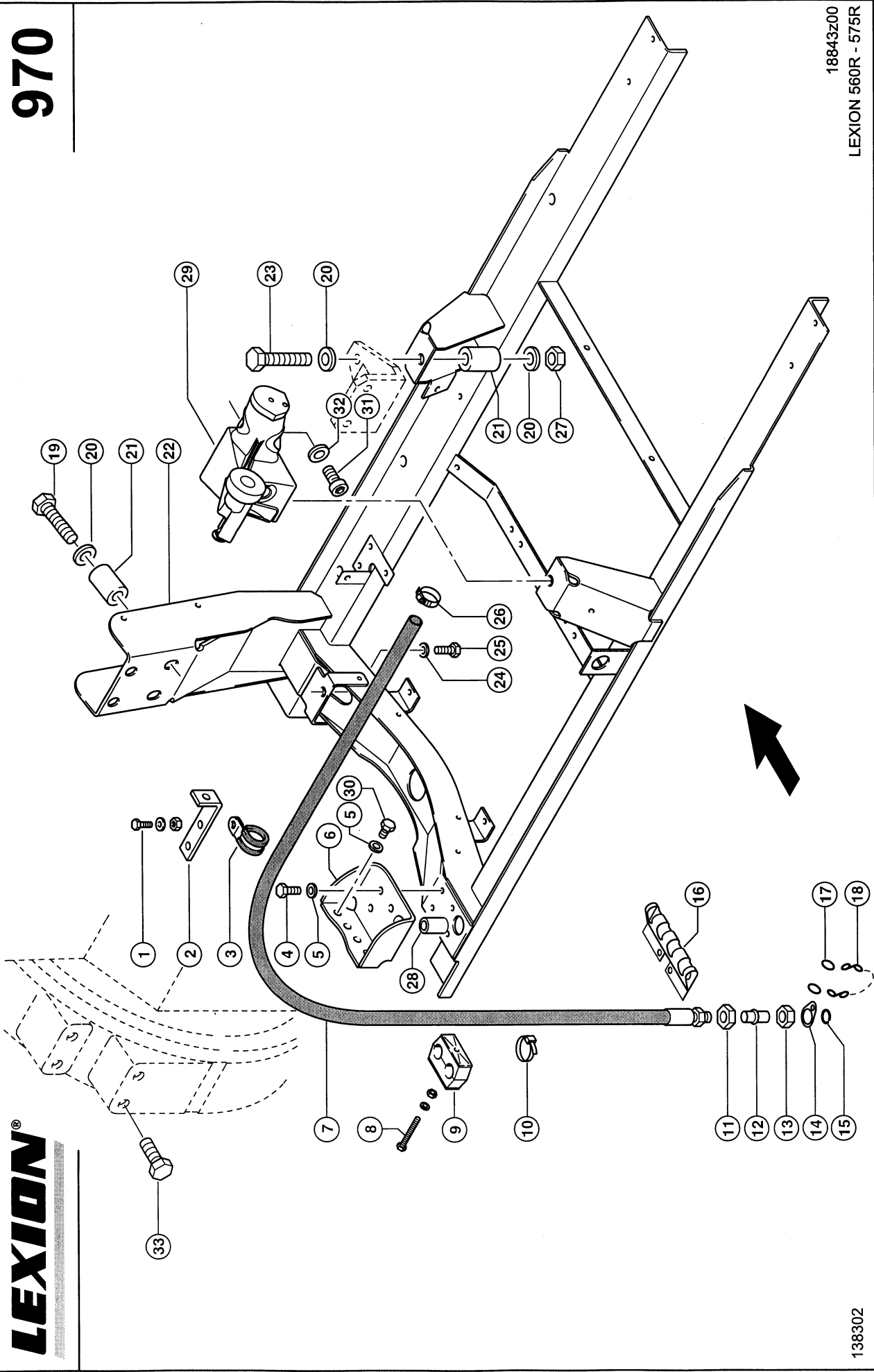
1) Remarks

P 02/510 = 253 Kw / Cat C9

970

LEXION®

LEXION 575-560 R



18843Z00
LEXION 560R - 575R

138302

CAT C9 TIER III; BASE, OIL DRAIN HOSE 1)

Pos.	Part No.	Description	Dimension	Quantity	Conditions
1	00 0236 200 0	HEXAGON HEAD BOLT	M8X20	1	
1	00 0239 387 0	CONTACT WASHER	A8-8,2X18X1,4	1	
1	00 0236 170 0	HEXAGONAL NUT	M8	1	
2	00 0073 012 1	ANGLE	30X5X160	1	
3	00 0215 394 0	HOLDER CLAMP	D1-24X20	2	
4	00 0237 461 0	HEXAGON HEAD BOLT	M12X30	4	
5	00 0239 389 0	CONTACT WASHER	A12	8	
6	00 0760 949 2	SUPPORT REAR		1	
7	00 0350 390 1	OIL DRAIN HOSE		1	
8	00 0235 522 0	HEXAGON HEAD BOLT	M8 X 65	2	
8	00 0239 387 0	CONTACT WASHER	A8-8,2X18X1,4	2	
8	00 0236 170 0	HEXAGONAL NUT	M8	2	
9	00 0689 060 0	CLAMP	Z KP-3-R-25-25-PA	1	
10	00 0697 798 0	CABLE TIE	7,6X290X1,9	2	
11	00 0236 327 0	HEXAGONAL NUT	M22X1,5	1	
12	00 0077 528 1	DRAIN FITTING	D18,1X51,5	1	
13	00 0633 589 1	UNION NUT	A3 L15	1	
14	00 0077 529 0	STRAP	1,0X0026X0041	1	
15	00 0215 080 0	SNAP RING	A 14	1	
16	00 0771 504 0	SUPPORT	3,0X126X230	1	
17	00 0002 846 0	RING	SPIRALFÖRMIG OFFEN2 16 X		
18	00 0002 848 0	KNOT CHAIN	1,8X 25X 6GL	1	
19	00 0215 631 0	HEXAGON HEAD BOLT	3/4-10UNC-2AX4 1/2	4	
20	00 0212 191 0	CONTACT WASHER	A20	8	
21	00 0796 231 0	BUSHING	D42D20.5X62	6	
22	00 0353 682 2	ENGINE MOUNTING	C9 TYP 583	1	
23	00 0211 186 0	HEXAGON HEAD BOLT	M20X130	2	
24	00 0239 389 0	CONTACT WASHER	A12	1	
25	00 0211 465 0	HEX.HEAD BOLT	1/2-13UNC-2AX1 1/2	1	
26	00 0408 554 2	HOSE CLAMP	W.ERS.D.4085543	1	
27	00 0237 521 0	HEX.NUT	M20	2	
28	00 0796 273 0	BUSHING	D32/D18X50	2	
29	00 0796 942 1	ENGINE SUPPORT		1	
30	00 0237 458 0	HEXAGON HEAD BOLT	M12X20	4	
31	00 0214 367 0	SOCKET HEAD SCREW	M16X 40	4	
32	00 0215 291 1	WASHER	16 -16,2X24,6X3,5	4	
33	00 0214 077 0	HEXAGON HEAD BOLT	3/4-10X2	2	

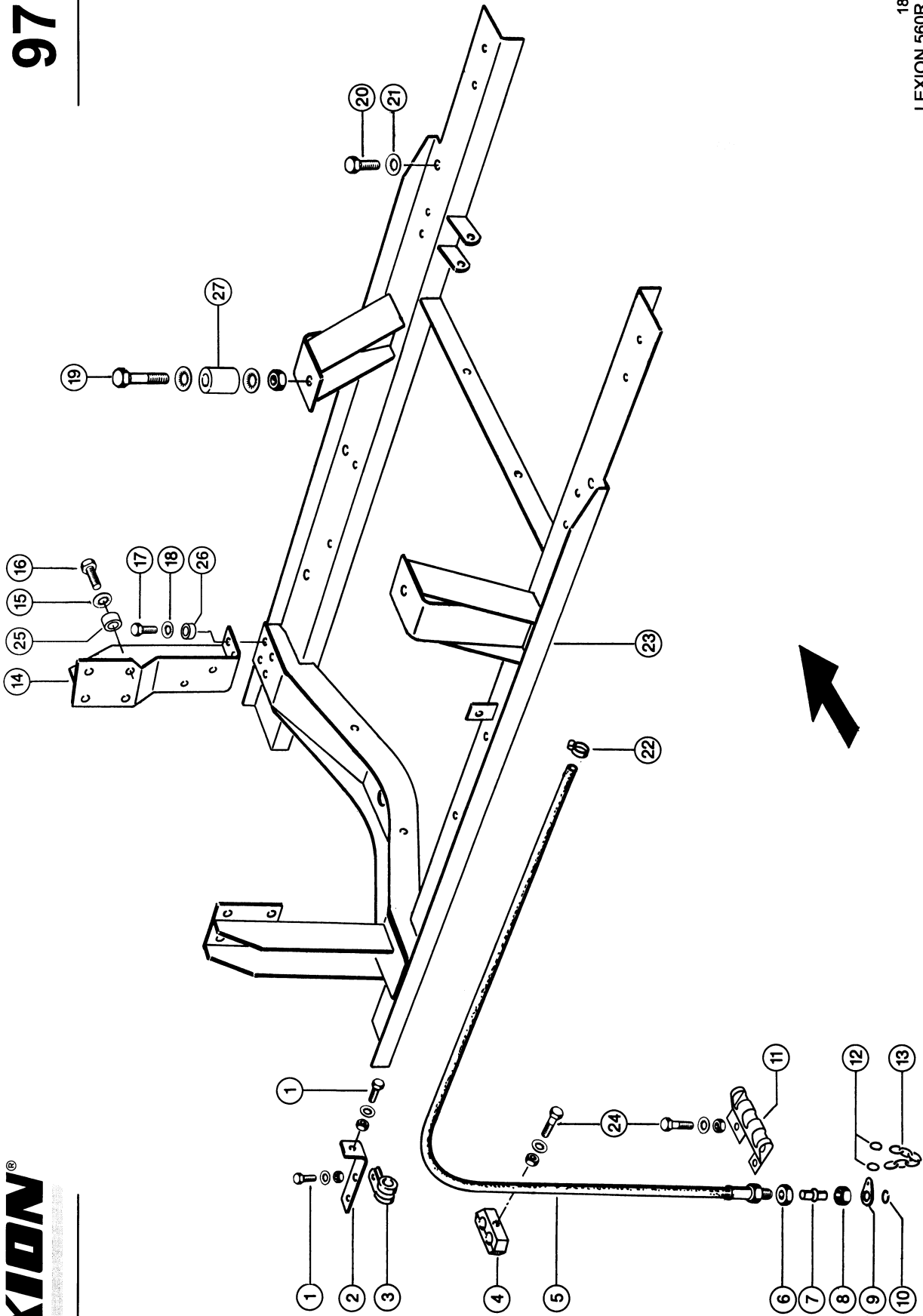
1) Remarks

Cat C9 Tier Iii

971

LEXION®

LEXION 575-560 R



18383z00
LEXION 560R / 570R

136871

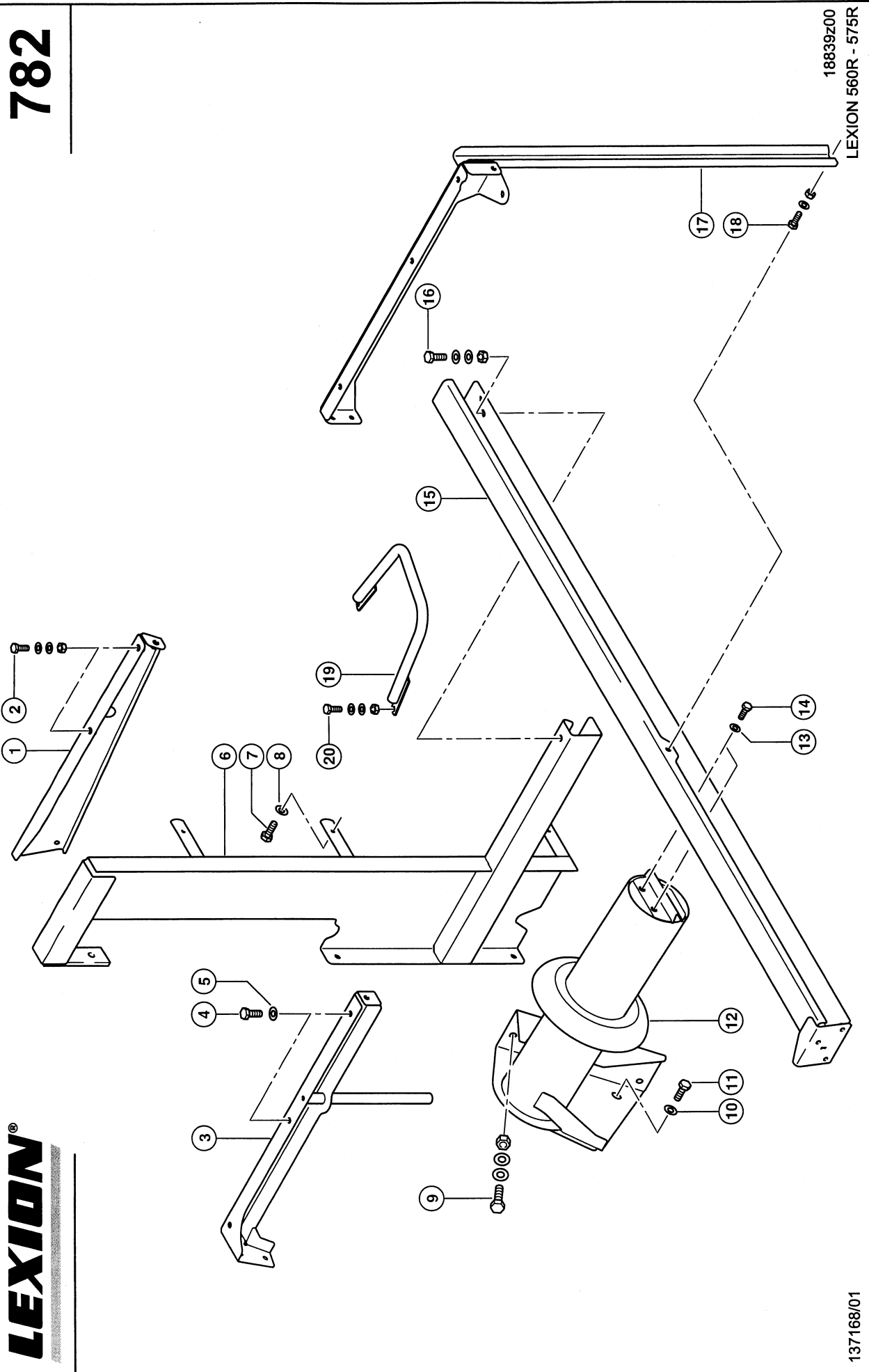
ENGINE 3126B; BASE, OIL DRAIN HOSE 1)

Pos.	Part No.	Description	Dimension	Quantity	Conditions
1	00 0237 442 0	HEXAGON HEAD BOLT	M8X25	1	
1	00 0236 170 0	HEXAGONAL NUT	M8	1	
1	00 0239 387 0	CONTACT WASHER	A8-8,2X18X1,4	1	
2	00 0073 012 1	ANGLE	30X5X160	1	
3	00 0215 394 0	HOLDER CLAMP	D1-24X20	1	
4	00 0689 060 0	CLAMP	Z KP-3-R-25-25-PA	1	
5	00 0350 390 1	OIL DRAIN HOSE		1	
6	00 0236 327 0	HEXAGONAL NUT	M22X1,5	1	
7	00 0077 528 2	DRAIN FITTING	D18,1X51,5	1	
8	00 0633 589 1	UNION NUT	A3 L15	1	
9	00 0077 529 0	STRAP	1,0X0026X0041	1	
10	00 0215 080 0	SNAP RING	A 14	1	
11	00 0771 504 0	SUPPORT	3,0X126X230	1	
12	00 0002 846 0	RING	SPIRALFÖRMIG OFFEN2 16 X		
13	00 0002 848 0	KNOT CHAIN	1,8X 25X 6GL	1	
14	00 0796 247 1	SUPPORT		1	
15	00 0239 390 0	CONTACT WASHER	A14	8	
16	00 0242 460 0	HEXAGON HEAD BOLT	M14X30	2	
16	00 0235 566 0	HEXAGON HEAD BOLT	M14X35	2	
16	00 0242 462 0	HEXAGON HEAD BOLT	M14X60	4	
17	00 0237 456 0	HEXAGON HEAD BOLT	M10X45	4	
18	00 0239 388 0	CONTACT WASHER	A10-10,2X22,25X1,6	4	
19	00 0238 869 0	HEXAGON HEAD BOLT	M20X120	2	
19	00 0237 521 0	HEX.NUT	M20	2	
19	00 0212 191 0	CONTACT WASHER	A20	4	
20	00 0236 230 0	HEXAGON HEAD BOLT	M16X35	8	
21	00 0239 391 0	CONTACT WASHER	A16	8	
22	00 0408 554 2	HOSE CLAMP	W.ERS.D.4085543	1	
23	00 0761 881 2	ENGINE MOUNTING	3126B TYP543	1	
24	00 0237 341 0	HEXAGON HEAD BOLT	M08X45	3	
24	00 0236 170 0	HEXAGONAL NUT	M8	3	
24	00 0239 387 0	CONTACT WASHER	A8-8,2X18X1,4	3	
25	00 0644 766 0	SPACER BUSH	D30X31/BO.15,2	4	
26	00 0061 840 0	BUSHING	11X25X20	4	
27	00 0796 231 0	BUSHING	D42D20.5X62	2	

1) Remarks

P 02/580 = 216 Kw / Cat 3126b

782



LEXION®

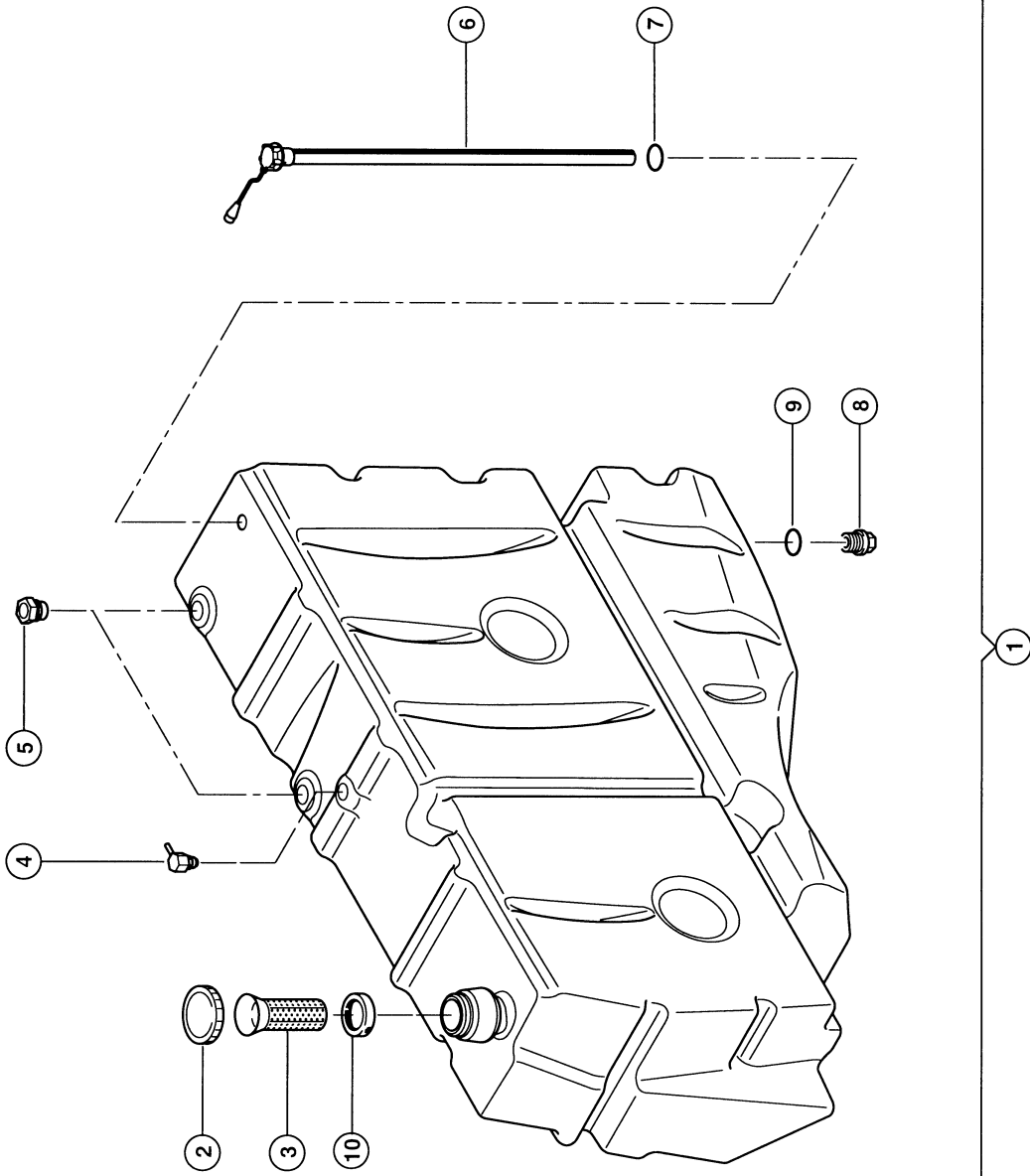
137168/01

BRACKET FOR FUEL TANK

Pos.	Part No.	Description	Dimension	Quantity	Conditions
1	00 0794 841 3	FASTENER	1420	1	
2	00 0237 370 0	HEXAGON HEAD BOLT	M8X30	2	
2	00 0239 387 0	CONTACT WASHER	A8-8,2X18X1,4	4	
2	00 0236 170 0	HEXAGONAL NUT	M8	2	
3	00 0794 939 1	SUPPORT	688,5X164X109,8	1	
4	00 0237 453 0	HEXAGON HEAD BOLT	M10X30	2	
5	00 0239 388 0	CONTACT WASHER	A10-10,2X22,25X1,6	2	
6	00 0794 938 3	SUPPORT	1420	1	
7	00 0237 453 0	HEXAGON HEAD BOLT	M10X30	3	
8	00 0239 388 0	CONTACT WASHER	A10-10,2X22,25X1,6	3	
9	00 0237 461 0	HEXAGON HEAD BOLT	M12X30	4	
9	00 0239 387 0	CONTACT WASHER	A8-8,2X18X1,4	8	
9	00 0236 172 0	HEXAGONAL NUT	M12	4	
10	00 0239 388 0	CONTACT WASHER	A10-10,2X22,25X1,6	1	
11	00 0237 453 0	HEXAGON HEAD BOLT	M10X30	1	
12	00 0794 935 2	MAIN FRAME	1420	1	
13	00 0239 387 0	CONTACT WASHER	A8-8,2X18X1,4	2	
14	00 0237 439 0	HEXAGON HEAD BOLT	M8X16	2	
15	00 0794 855 1	SUPPORT		1	
16	00 0237 453 0	HEXAGON HEAD BOLT	M10X30	1	
16	00 0239 388 0	CONTACT WASHER	A10-10,2X22,25X1,6	2	
16	00 0236 171 0	HEXAGONAL NUT	M10	1	
17	00 0794 937 2	SUPPORT	1420	1	
18	00 0237 439 0	HEXAGON HEAD BOLT	M8X16	3	
18	00 0239 387 0	CONTACT WASHER	A8-8,2X18X1,4	4	
18	00 0236 170 0	HEXAGONAL NUT	M8	1	
19	00 0782 676 0	REINFORCING PLATE		1	
20	00 0237 453 0	HEXAGON HEAD BOLT	M10X30	2	
20	00 0239 388 0	CONTACT WASHER	A10-10,2X22,25X1,6	4	
20	00 0236 171 0	HEXAGONAL NUT	M10	2	

963

LEXION®
A 575-560 R



18100z00
LEXION 560R - 575R

136847

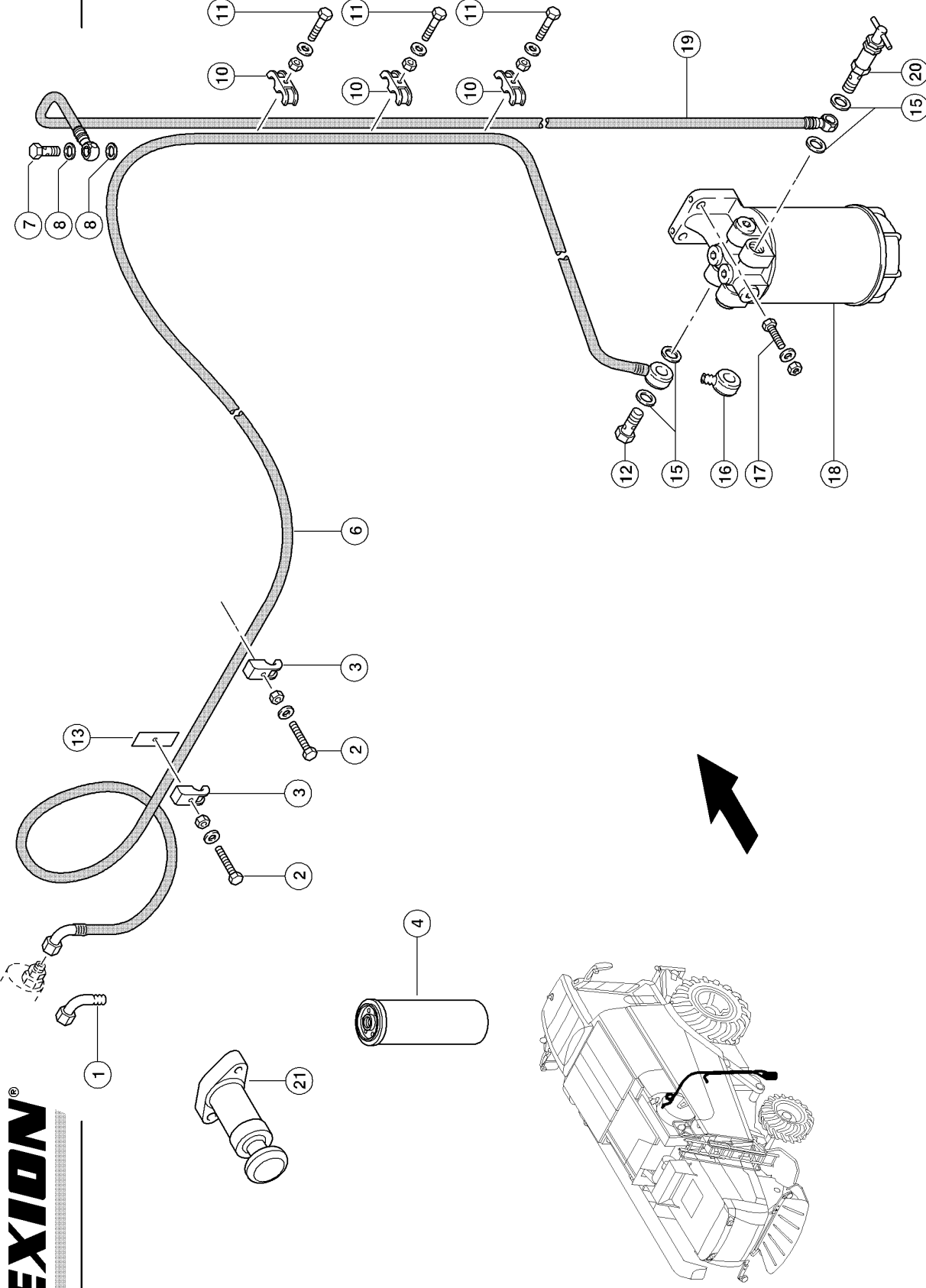
FUEL TANK

Pos.	Part No.	Description	Dimension	Quantity	Conditions
1	00 0794 416 1	FUEL TANK	800 LTR ERS.D.794416.2	1	
1	00 0794 918 4	FUEL TANK	800 LTR ERS.D.794918.5	1	
2	00 0624 003 1	CAP	DV 80 GL	1	
3	00 0736 238 0	TANK FILTER		1	
4	00 0794 995 0	BREATHER VALVE		1	
5	00 0794 998 1	SUCTION TUBE	800 LTR	2	
6	00 0794 996 0	LEVEL INDICATOR	L=1340MM D=54MM	1	
6	00 0783 653 0	PT SCREW	6ST 4X40	1	
7	00 0794 993 0	GASKET	VORRATSGEBER	1	
8	00 0687 607 0	DRAIN SCREW	M33X2	1	
9	00 0215 958 1	FLAT SEAL RING	30X40X3	1	
10	00 0038 915 0	SOCKET	SV 80 B/40	1	1)
11	00 0794 414 0	CONNECTION	MIT W.ABLAS; KUGELH.; 1/ WASSER+G3/8 ERS.D.	1	
12	00 0783 643 0	PLUG	78364	1	
13	00 0687 625 0	HEXAGON HEAD SCREW	M 8X 17	1	
14	00 0783 652 0	BALL-TYPE TAP	DN8-I-G3/8XA-G3/8	1	
15	00 0783 644 1	ADAPTOR	G3/8"- 1/2" SAE J 2044	1	
16	00 0216 366 0	O-RING	10,50X1,5 NBR80	1	
17	00 0211 701 0	O-RING	91,67X3,53-N	1	
18	00 0038 915 0	SOCKET	SV 80 B/40	1	
19	00 0323 483 0	O-RING	18,64X3,53	2	
20	00 0034 019 0	UNION		1	
20	00 0794 998 1	SUCTION TUBE	800 LTR	1	
21	00 0211 091 2	O-RING	12 X 2 NBR 80	1	

1) Remarks

From No. 57500057

964



18380z03
LEXION 560R - 575R

LEXION®

136866

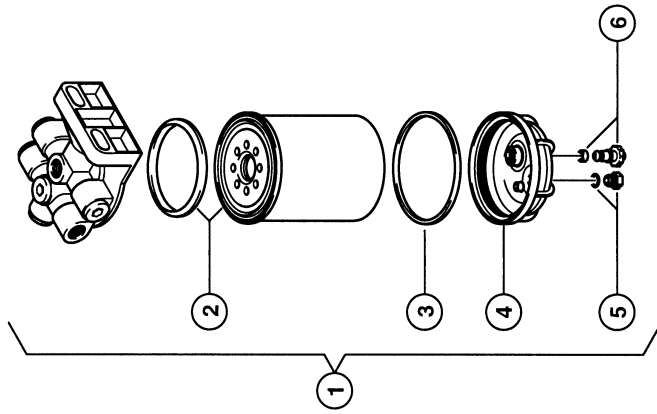
ENGINE CAT C9, 3126B; FUEL SYSTEM, FUEL

Pos.	Part No.	Description	Dimension	Quantity	Conditions
1	00 0796 209 1	CONNECTION	SWE-10X12	1	
2	00 0242 442 0	HEXAGON HEAD BOLT	M 6X30	3	
2	00 0239 386 0	CONTACT WASHER	A 6	3	
2	00 0236 169 0	HEXAGONAL NUT	M6	3	
3	00 0715 242 0	CLAMP	A 15	3	
4	00 0363 204 1	FUEL FILTER		1	
6	00 0796 197 0	FUEL PIPE	LG 3500 MM	1	1)
7	00 0096 030 0	HOLLOW SCREW	12 - M16X1,5 (12-3 ZULÄS	1	
8	00 0216 465 0	SEALING RING	D 16X22	2	
10	00 0715 241 0	DOUBLE CLAMP	B 15	3	
11	00 0235 505 0	HEXAGON HEAD BOLT	M06X30	3	
11	00 0239 386 0	CONTACT WASHER	A 6	3	
11	00 0236 169 0	HEXAGONAL NUT	M6	3	
12	00 0096 030 0	HOLLOW SCREW	12 - M16X1,5 (12-3 ZULÄS	1	
15	00 0216 465 0	SEALING RING	D 16X22	4	
16	00 0216 458 0	CONNECTION	R16-12	1	
17	00 0237 442 0	HEXAGON HEAD BOLT	M8X25	2	
17	00 0239 393 1	CONTACT WASHER	B 8 -8.2X22X1,9	2	
17	00 0236 170 0	HEXAGONAL NUT	M8	2	
18	00 0796 211 0	FUEL FILTER		1	2)
19	00 0743 682 0	FUEL PIPE	KPL	1	3)
20	00 0761 583 1	LIMITATION VALVE	M16X1,5	1	
21	00 0360 431 1	FUEL PUMP		1	4)

1)	Remarks	3500mm Long
2)	Remarks	See Illustration 966
3)	Remarks	1900 mm long
4)	Remarks	WITH ENGINE C9

966

18379z00
LEXION 560R / 570R



LEXION[®]

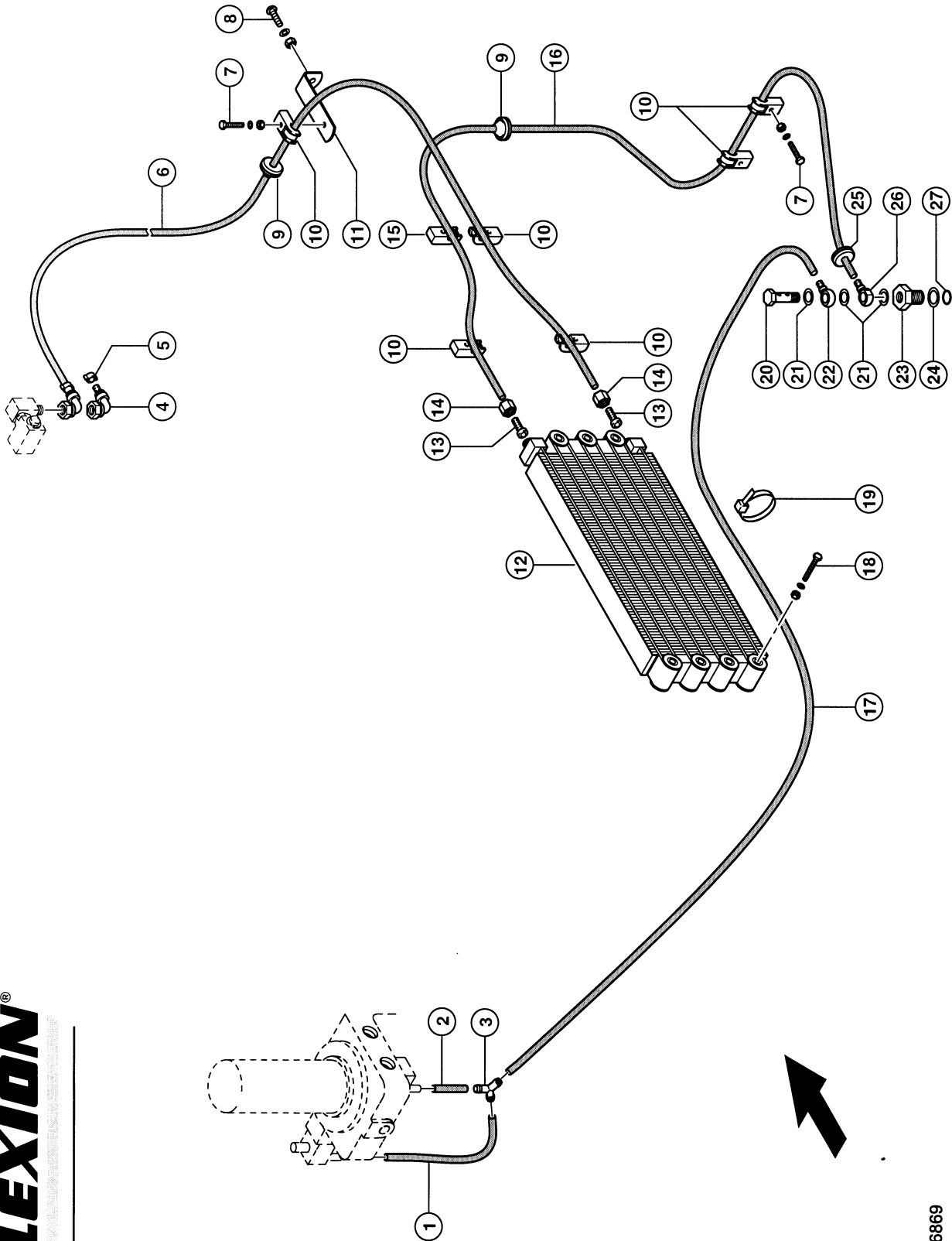
136863

FUEL FILTER ASSEMBLIES 1)

Pos.	Part No.	Description	Dimension	Quantity	Conditions
1	00 0796 211 0	FUEL FILTER		1	
2	00 0796 213 0	FILTER ELEMENT		1	
3	00 0796 789 0	SEALING RING		1	
4	00 0796 788 0	WATER CONTAINER		1	2)
5	00 0796 791 0	SCREW PLUG		1	
6	00 0796 790 0	PLUG		1	
1)	Remarks	P 06 / 20 Fül Filter Standard			
2)	Remarks	With Item 3, 5, 6			

967

18381Z00
LEXION 560R / 570R



LEXION[®]

CAT C9 TIER II, 3126B; FUEL SYSTEM, COOL 1)

Pos.	Part No.	Description	Dimension	Quantity	Conditions
1	00 0233 693 1	HOSE	A 8X12	1	2)
2	00 0233 693 1	HOSE	A 8X12	1	3)
3	00 0796 352 0	SOCKET	YS 8	1	
4	00 0353 723 1	CONNECTION	90°-11/16-16UN-2B	1	
5	00 0408 544 0	2-EAR CLAMP	11-13 ERS.D. 408544.1	1	
6	00 0796 195 1	FUEL PIPE	LG 1650 MM	1	4)
7	00 0242 442 0	HEXAGON HEAD BOLT	M 6X30	2	
7	00 0239 386 0	CONTACT WASHER	A 6	2	
7	00 0236 169 0	HEXAGONAL NUT	M6	2	
8	00 0610 099 1	COACH BOLT	M 8X 25	1	
8	00 0239 387 0	CONTACT WASHER	A8-8,2X18X1,4	1	
8	00 0236 170 0	HEXAGONAL NUT	M8	1	
9	00 0735 998 0	GROMMET	C 6-12X24X1,5	1	
10	00 0216 117 0	CLAMP	A 10	5	
11	00 0077 376 0	SUPPORT	3X30X153	1	
12	00 0350 370 0	FUEL COOLER		1	
13	00 0239 304 0	CONNECTION	D16X1,5-8	1	
14	00 0216 006 0	UNION NUT	BLL10	1	
15	00 0715 242 0	CLAMP	A 15	1	
16	00 0743 756 0	FUEL HOSE	KUEHLER-TANK LG 1720 MM	1	5)
17	00 0233 693 1	HOSE	A 8X12	1	6)
18	00 0235 344 0	COACH BOLT	M 6X45	3	
18	00 0239 386 0	CONTACT WASHER	A 6	3	
18	00 0236 169 0	HEXAGONAL NUT	M6	3	
20	00 0216 398 0	DOUBLE HOLLOW SCREW	12-8 M16X1,5	1	
21	00 0216 465 0	SEALING RING	D 16X22	3	
22	00 0239 331 0	CONNECTION	R14- 8	1	
23	00 0736 256 2	THREADED INSET	6KT32X48	1	
24	00 0233 131 0	WASHER	28X 42X 1	1	
25	00 0238 250 0	GROMMET	A 24X30X3,5	1	
26	00 0216 405 0	CONNECTION	16-8 (RSN 28-0)	1	
27	00 0215 956 1	O-RING	18,4X5,33-N	1	

1) Remarks	CAT C9 TIER II, 3126B
-------------------	-----------------------

2) Remarks	170mm Long
-------------------	------------

3) Remarks	50mm Long
-------------------	-----------

4) Remarks	1650mm long
-------------------	-------------

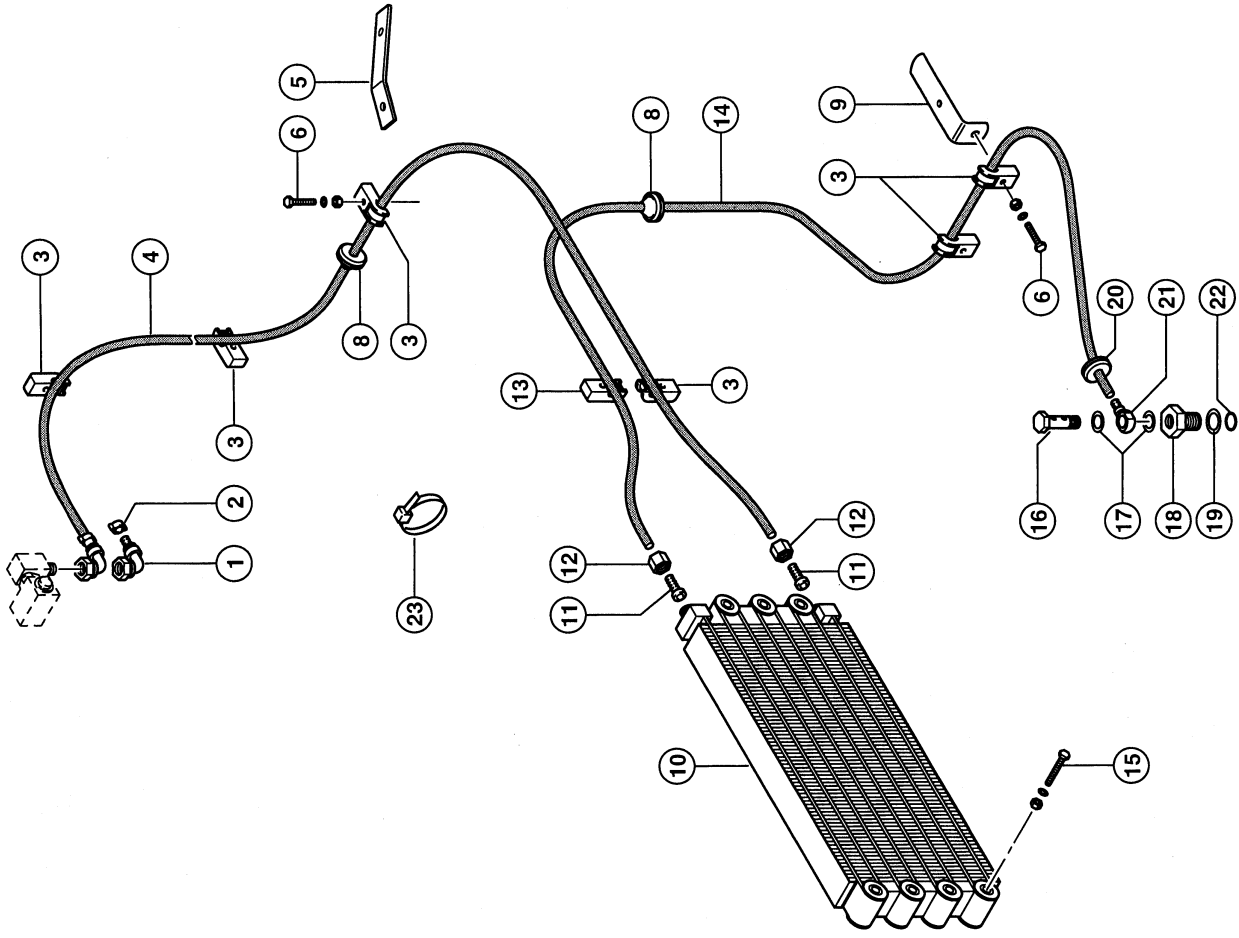
5) Remarks	1720mm Long
-------------------	-------------

6) Remarks	2480mm Long
-------------------	-------------

968

LEXION®

LEXION 575-560 R



18853z00
LEXION 560R - 575R

138301



ENGINE CAT C9 TIER III;FUEL SYSTEM, FUEL 1)

Pos.	Part No.	Description	Dimension	Quantity	Conditions
1	00 0353 723 1	CONNECTION	90°-11/16-16UN-2B	1	
2	00 0408 544 0	2-EAR CLAMP	11-13 ERS.D. 408544.1	1	
3	00 0216 117 0	CLAMP	A 10	6	
4	00 0798 235 1	FUEL PIPE	LG 1086 MM	1	2)
5	00 0726 276 0	SUPPORT	25X4X149	1	
6	00 0242 442 0	HEXAGON HEAD BOLT	M 6X30	4	
6	00 0235 340 0	COACH BOLT	M 6X25	2	
6	00 0239 386 0	CONTACT WASHER	A 6	6	
6	00 0236 169 0	HEXAGONAL NUT	M6	6	
8	00 0735 998 0	GROMMET	C 6-12X24X1,5	1	
10	00 0350 370 0	FUEL COOLER		1	
11	00 0239 304 0	CONNECTION	D16X1,5-8	1	
12	00 0216 006 0	UNION NUT	BLL10	1	
13	00 0715 242 0	CLAMP	A 15	3	
13	00 0242 442 0	HEXAGON HEAD BOLT	M 6X30	3	
13	00 0236 169 0	HEXAGONAL NUT	M6	3	
13	00 0239 386 0	CONTACT WASHER	A 6	3	
14	00 0743 755 0	FUEL HOSE	KUEHLER-TANK LG 2250 MM	1	3)
15	00 0235 344 0	COACH BOLT	M 6X45	3	
15	00 0239 386 0	CONTACT WASHER	A 6	3	
15	00 0236 169 0	HEXAGONAL NUT	M6	3	
16	00 0096 030 0	HOLLOW SCREW	12 - M16X1,5 (12-3 ZULÄS	1	
17	00 0633 114 1	FLAT SEAL RING	D 14X20X1,5	1	
18	00 0736 256 2	THREADED INSET	6KT32X48	1	
19	00 0233 131 0	WASHER	28X 42X 1	1	
20	00 0238 250 0	GROMMET	A 24X30X3,5	1	
21	00 0216 405 0	CONNECTION	16-8 (RSN 28-0)	1	
22	00 0215 956 1	O-RING	18,4X5,33-N	1	
23	00 0237 871 0	CABLE TIE	4,8X188X1,3	2	

1)	Remarks	Cat C9 Tier Iii
2)	Remarks	1150mm long
3)	Remarks	2250mm Long

Thank you so much for reading.
Please click the “Buy Now!”
button below to download the
complete manual.



After you pay.

You can download the most
perfect and complete manual in
the world immediately.

Our support email:

ebooklibonline@outlook.com