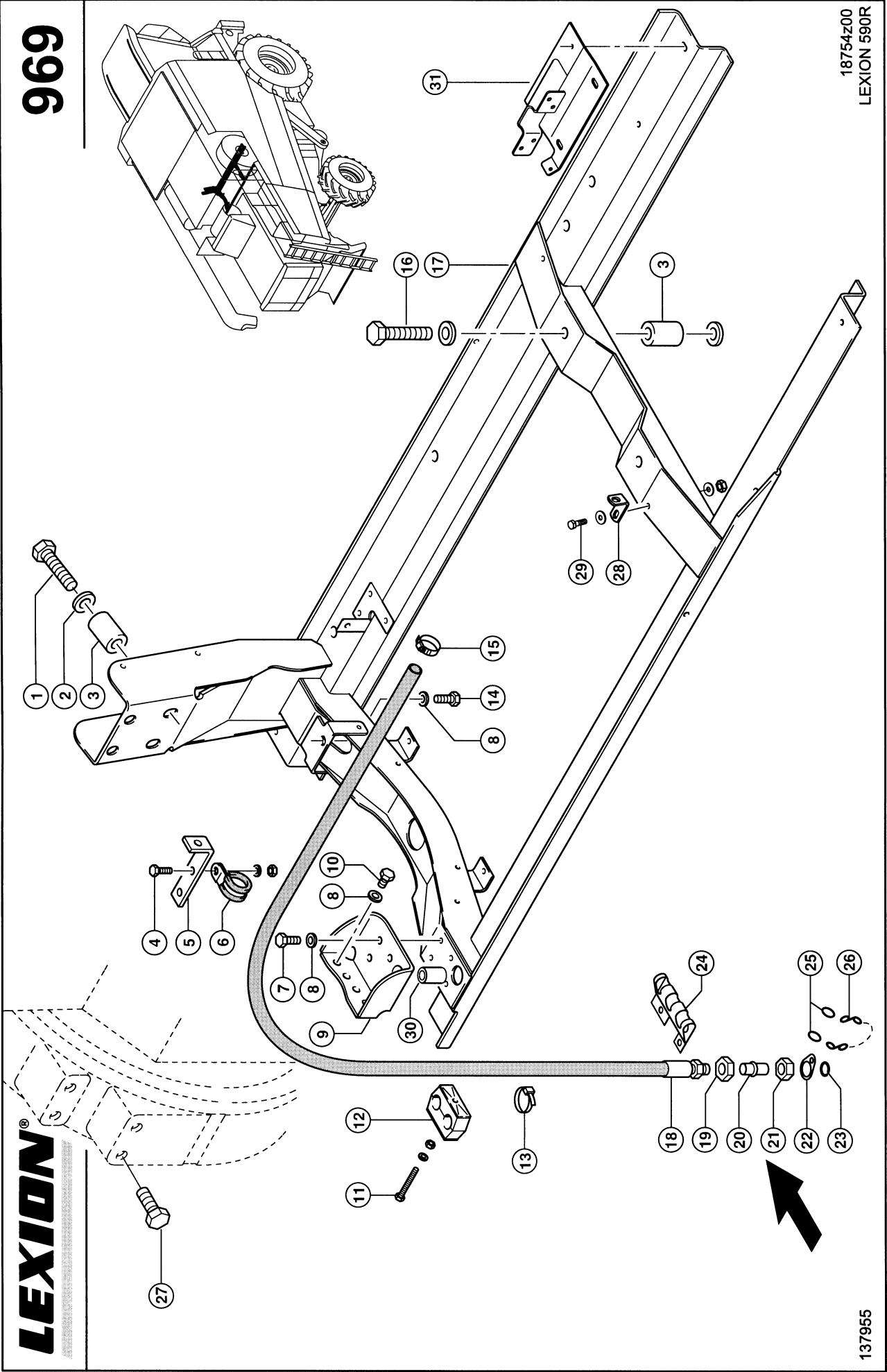


969



18754200
LEXION 590R

LEXION®

137955

BASE, OIL DRAIN HOSE

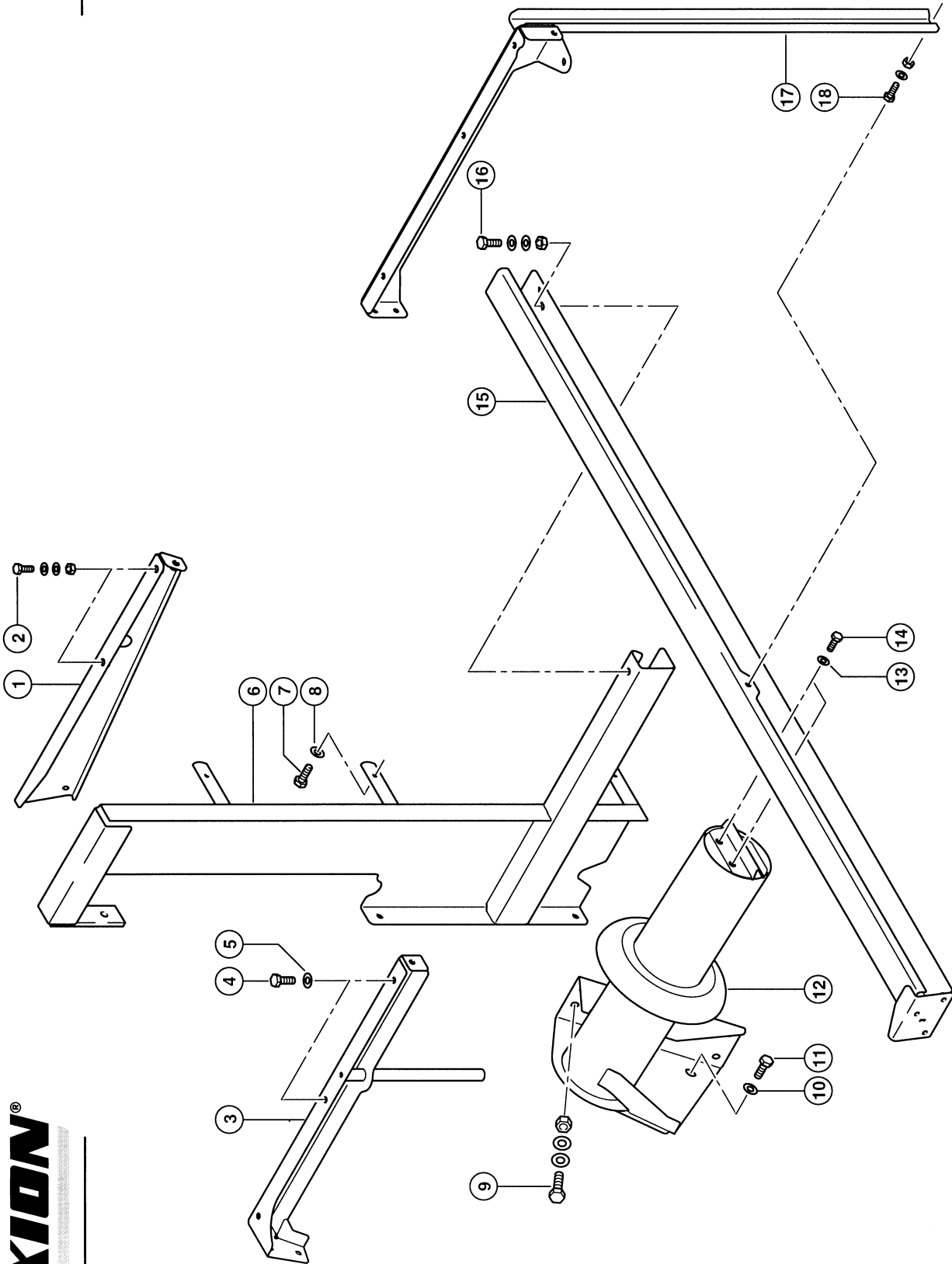
Pos.	Part No.	Description	Dimension	Quantity	Conditions
1	00 0215 631 0	HEXAGON HEAD BOLT	3/4-10UNC-2AX4 1/2	4	
2	00 0212 191 0	CONTACT WASHER	A20	4	
3	00 0796 231 0	BUSHING	D42D20.5X62	6	
4	00 0237 442 0	HEXAGON HEAD BOLT	M8X25	1	
4	00 0236 170 0	HEXAGONAL NUT	M8	1	
4	00 0239 387 0	CONTACT WASHER	A8-8,2X18X1,4	1	
5	00 0073 012 1	ANGLE	30X5X160	1	
6	00 0215 394 0	HOLDER CLAMP	D1-24X20	2	
7	00 0237 461 0	HEXAGON HEAD BOLT	M12X30	4	
8	00 0239 389 0	CONTACT WASHER	A12	8	
9	00 0760 949 2	SUPPORT REAR		1	
10	00 0237 458 0	HEXAGON HEAD BOLT	M12X20	4	
11	00 0235 522 0	HEXAGON HEAD BOLT	M8 X 65	2	
11	00 0236 170 0	HEXAGONAL NUT	M8	2	
11	00 0239 387 0	CONTACT WASHER	A8-8,2X18X1,4	2	
12	00 0689 060 0	CLAMP	Z KP-3-R-25-25-PA	1	
13	00 0697 798 0	CABLE TIE	7,6X290X1,9	2	
14	00 0211 465 0	HEX.HEAD BOLT	1/2-13UNC-2AX1 1/2	1	
15	00 0408 554 2	HOSE CLAMP	W.ERS.D.4085543	1	
16	00 0211 573 0	HEXAGON HEAD BOLT	M18-100	2	
16	00 0212 191 0	CONTACT WASHER	A20	4	
16	00 0242 848 0	HEXAGONAL NUT	M18	2	
17	00 0761 931 2	ENGINE MOUNTING		1	
18	00 0350 390 1	OIL DRAIN HOSE		1	
19	00 0236 327 0	HEXAGONAL NUT	M22X1,5	1	
20	00 0077 528 2	DRAIN FITTING	D18,1X51,5	1	
21	00 0633 589 1	UNION NUT	A3 L15	1	
22	00 0077 529 0	STRAP	1,0X0026X0041	1	
23	00 0215 080 0	SNAP RING	A 14	1	
24	00 0771 504 0	SUPPORT	3,0X126X230	1	
25	00 0002 846 0	RING	SPIRALFÖRMIG OFFEN2 16 X		
26	00 0002 848 0	KNOT CHAIN	1,8X 25X 6GL	1	
27	00 0214 077 0	HEXAGON HEAD BOLT	3/4-10X2	2	
28	00 0350 391 0	SUPPORT	25X5X98	1	
29	00 0237 874 0	HEXAGON HEAD BOLT	M10X35	1	
29	00 0239 388 0	CONTACT WASHER	A10-10,2X22,25X1,6	2	
29	00 0236 171 0	HEXAGONAL NUT	M10	1	
30	00 0796 273 0	BUSHING	D32/D18X50	2	
31	00 0743 841 0	SUPPORT	LUFTSCHACHT	1	1)

1) Remarks

With Engine C12

782

18501z00
LEXION 590R



133760

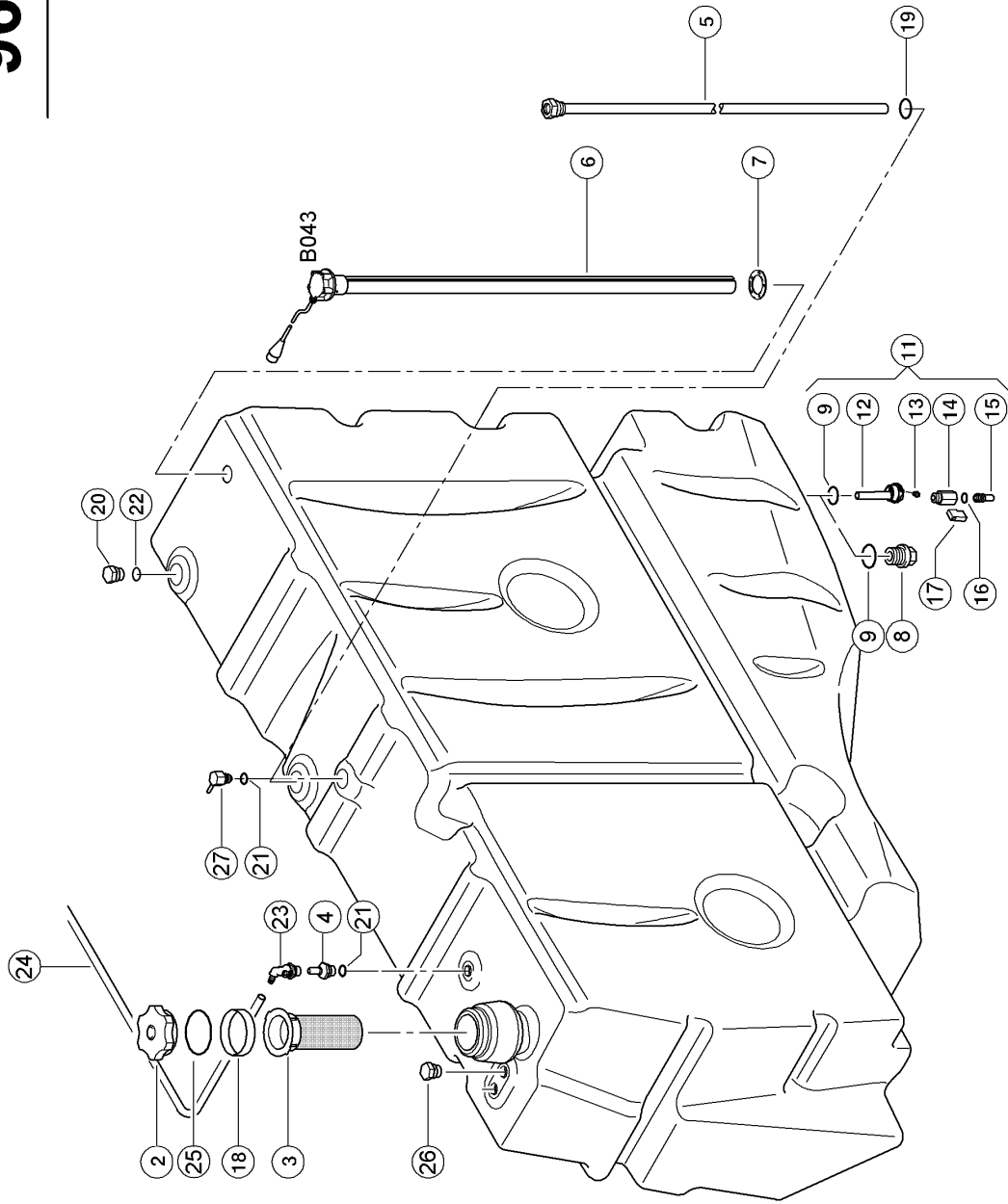
LEXION®

BRACKET FOR FUEL TANK

Pos.	Part No.	Description	Dimension	Quantity	Conditions
1	00 0794 842 2	FASTENER	1700	1	
2	00 0237 370 0	HEXAGON HEAD BOLT	M8X30	2	
2	00 0239 387 0	CONTACT WASHER	A8-8,2X18X1,4	4	
2	00 0236 170 0	HEXAGONAL NUT	M8	2	
3	00 0794 856 2	SUPPORT	1700 / 800 LTR	1	
4	00 0237 453 0	HEXAGON HEAD BOLT	M10X30	2	
5	00 0239 388 0	CONTACT WASHER	A10-10,2X22,25X1,6	2	
6	00 0794 858 2	SUPPORT		1	
7	00 0237 453 0	HEXAGON HEAD BOLT	M10X30	3	
8	00 0239 388 0	CONTACT WASHER	A10-10,2X22,25X1,6	3	
9	00 0237 461 0	HEXAGON HEAD BOLT	M12X30	4	
9	00 0239 387 0	CONTACT WASHER	A8-8,2X18X1,4	8	
9	00 0236 172 0	HEXAGONAL NUT	M12	4	
10	00 0239 388 0	CONTACT WASHER	A10-10,2X22,25X1,6	1	
11	00 0237 453 0	HEXAGON HEAD BOLT	M10X30	1	
12	00 0794 854 1	MAIN FRAME	1700	1	
13	00 0239 387 0	CONTACT WASHER	A8-8,2X18X1,4	2	
14	00 0237 439 0	HEXAGON HEAD BOLT	M8X16	2	
15	00 0794 855 1	SUPPORT		1	
16	00 0237 453 0	HEXAGON HEAD BOLT	M10X30	1	
16	00 0239 388 0	CONTACT WASHER	A10-10,2X22,25X1,6	2	
16	00 0236 171 0	HEXAGONAL NUT	M10	1	
17	00 0794 857 1	SUPPORT	1700	1	
18	00 0237 439 0	HEXAGON HEAD BOLT	M8X16	3	
18	00 0239 387 0	CONTACT WASHER	A8-8,2X18X1,4	4	
18	00 0236 170 0	HEXAGONAL NUT	M8	1	

LEXION®

963



18100z05
LEXION 595R / 590R

1

137951/03



FUEL TANK

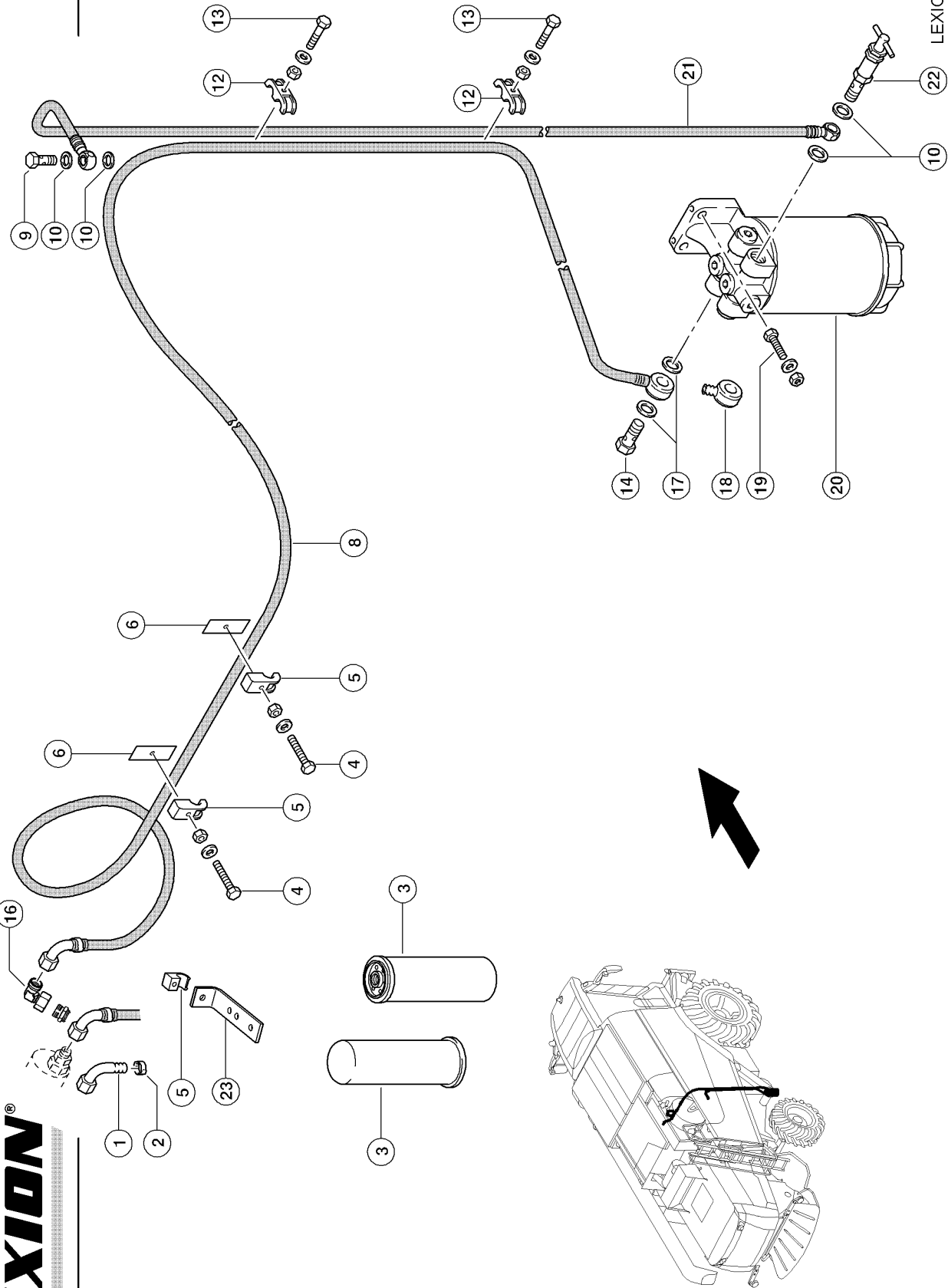
Pos.	Part No.	Description	Dimension	Quantity	Conditions
1	00 0794 918 5	FUEL TANK	800 NUR ET	1	1)
1	00 0794 416 2	FUEL TANK	800LTR. OHNE Z-TANK	1	2)
2	00 0624 003 1	CAP	DV 80 GL	1	3)
2	00 0217 508 0	CAP	DV 80 GL OHNE LÜFTUNG	1	
2	00 0177 621 0	CAP	D80 BELUEFTET, ABSCHLIES	1	4)
3	00 0736 238 0	TANK FILTER		1	
4	00 0794 417 1	VENTILATION		1	1)
5	00 0794 998 1	SUCTION TUBE	800 LTR	1	
6	00 0016 596 1	LEVEL INDICATOR	D = 1340MM / L = 66MM	1	5)
6	00 0794 996 0	LEVEL INDICATOR	L=1340MM D=54MM	1	6)
6	00 0783 653 0	PT SCREW	6ST 4X40	1	7)
7	00 0794 993 0	GASKET	VORRATSGEBER	1	
8	00 0687 607 0	DRAIN SCREW	M33X2	1	8)
9	00 0217 459 1	O-RING	27X4,0 -N	1	9)
9	00 0215 958 1	FLAT SEAL RING	30X40X3	1	10)
11	00 0794 414 1	CONNECTION	MIT W.ABLAS ; KUGELH. ;	1	11)
12	00 0783 643 1	PLUG	WASSER + G3/8"	1	11)
13	00 0687 625 1	HEXAGON HEAD BOLT	M8X17 F. TANK WASSERABLA	1	11)
14	00 0783 652 0	BALL-TYPE TAP	DN8-I-G3/8XA-G3/8	1	11)
15	00 0783 644 1	ADAPTOR	G3/8" - 1/2" SAE J 2044	1	11)
16	00 0216 366 0	O-RING	10,50X1,5 NBR80	1	11)
17	00 0783 658 0	ANTI-ROTAT. LOCK	FUER 3/8" KUGELHAHN	1	12)
18	00 0038 915 0	SOCKET	SV 80 B/40	1	
19	00 0217 460 0	O-RING	18,64X3,53 -N	1	
20	00 0783 648 0	BLIND PLUG	G1/2" FUER TANK	1	13)
20	00 0794 998 1	SUCTION TUBE	800 LTR	1	2)
21	00 0217 460 0	O-RING	18,64X3,53 -N	1	1)
21	00 0211 091 2	O-RING	12 X 2 NBR 80	1	2)
22	00 0217 460 0	O-RING	18,64X3,53 -N	1	
23	00 0217 501 0	CONNECTOR	NQS 1/2" - 6 X 90 GRAD	1	14)
24	00 0136 529 0	PVC-HOSE	4+0,1X6X10000	1	15)
25	00 0211 701 0	O-RING	91,67X3,53-N	1	
26	00 0783 648 0	BLIND PLUG	G1/2" FUER TANK	2	1)
27	00 0794 995 0	BREATHER VALVE		1	2)

1)	machine no.	+ from 57900573
2)	machine no.	+ from 57900011 up to 57900572
3)	Remarks	Ventilation
4)	Remarks	LOCKING
5)	machine no. CCN	+ from 57900573 CCN-B043 fuel level sensor
6)	machine no. CCN	+ from 57900011 up to 57900572 CCN-B043 fuel level sensor
7)	Remarks	up to No. 57900406
8)	Remarks	Up To No. 57900406

FUEL TANK

9) machine no.	+ from 57900523 up to 57999999
10) machine no.	+ from 57900011 up to 57900522
11) Remarks	From No. 57900407
12) machine no.	+ from 57900523
13) machine no.	+ from 57900470 + from 57900573
14) machine no.	+ from 57900573 up to 57999999
15) Remarks	2800 mm long

964



LEXION®

18752z02
LEXION 595R / 590R

137952/01

ENGINE CAT C12, C13; FUEL SYSTEM, FUEL C 1)

Pos.	Part No.	Description	Dimension	Quantity	Conditions
1	00 0796 220 1	CONNECTION	SWE90-L15-12	1	
2	00 0238 269 0	2-EAR-CLAMP	(N90-M22X1, 15-18	1	
3	00 0363 204 0	FUEL FILTER		1	
4	00 0242 442 0	HEXAGON HEAD BOLT	M 6X30	2	
4	00 0239 386 0	CONTACT WASHER	A 6	2	
4	00 0236 169 0	HEXAGONAL NUT	M6	2	
5	00 0715 242 0	CLAMP	A 15	3	
6	00 0656 255 0	COUNTER PLATE	25X3X46	2	2)
8	00 0798 284 1	FUEL PIPE		1	3)
8	00 0796 198 1	FUEL PIPE	LG 2700 MM	1	4)
9	00 0096 030 0	HOLLOW SCREW	12 - M16X1,5 (12-3 ZULÄS	1	
10	00 0216 465 0	SEALING RING	D 16X22	4	
12	00 0715 241 0	DOUBLE CLAMP	B 15	3	
13	00 0235 505 0	HEXAGON HEAD BOLT	M06X30	3	
13	00 0239 386 0	CONTACT WASHER	A 6	3	
13	00 0236 169 0	HEXAGONAL NUT	M6	3	
14	00 0096 030 0	HOLLOW SCREW	12 - M16X1,5 (12-3 ZULÄS	1	
16	00 0249 836 0	ANGULAR MALE CONNECTOR	SWOE-L15	1	5)
16	00 0238 354 0	ANGLE UNION	SWE-L15 ERS. D. 0249836.	1	6)
17	00 0216 465 0	SEALING RING	D 16X22	2	
18	00 0216 458 0	CONNECTION	R16-12	1	
19	00 0237 442 0	HEXAGON HEAD BOLT	M8X25	2	
19	00 0239 393 1	CONTACT WASHER	B 8 -8.2X22X1,9	2	
19	00 0236 170 0	HEXAGONAL NUT	M8	2	
20	00 0796 211 0	FUEL FILTER		1	7)
21	00 0743 682 0	FUEL PIPE	KPL	1	8)
22	00 0761 583 1	LIMITATION VALVE	M16X1,5	1	
23	00 0659 359 1	SCREW-ON ANGLE	20X3X79	1	9)
23	00 0073 012 1	ANGLE	30X5X160	1	2)

1) Equipment

machine no.	MD_P02_0500 MD_P02_0620	CAT C12 328KW(SAE) 320KW(EWG) 303KW(ECE) C13 EWG340kW/ECExxxkW + from 57900011 up to 57900469
--------------------	----------------------------	---

2) Remarks

With Engine C12

3) Remarks

2456mm Long, Cat C13

4) Remarks

2766mm Long, Cat C12

5) RemarksEngine Cat C13
From No. 57900313**6) Remarks**Engine Cat C13
Up To No. 57900312**7) Remarks**

See Illustration 966

8) Remarks

1900 mm long

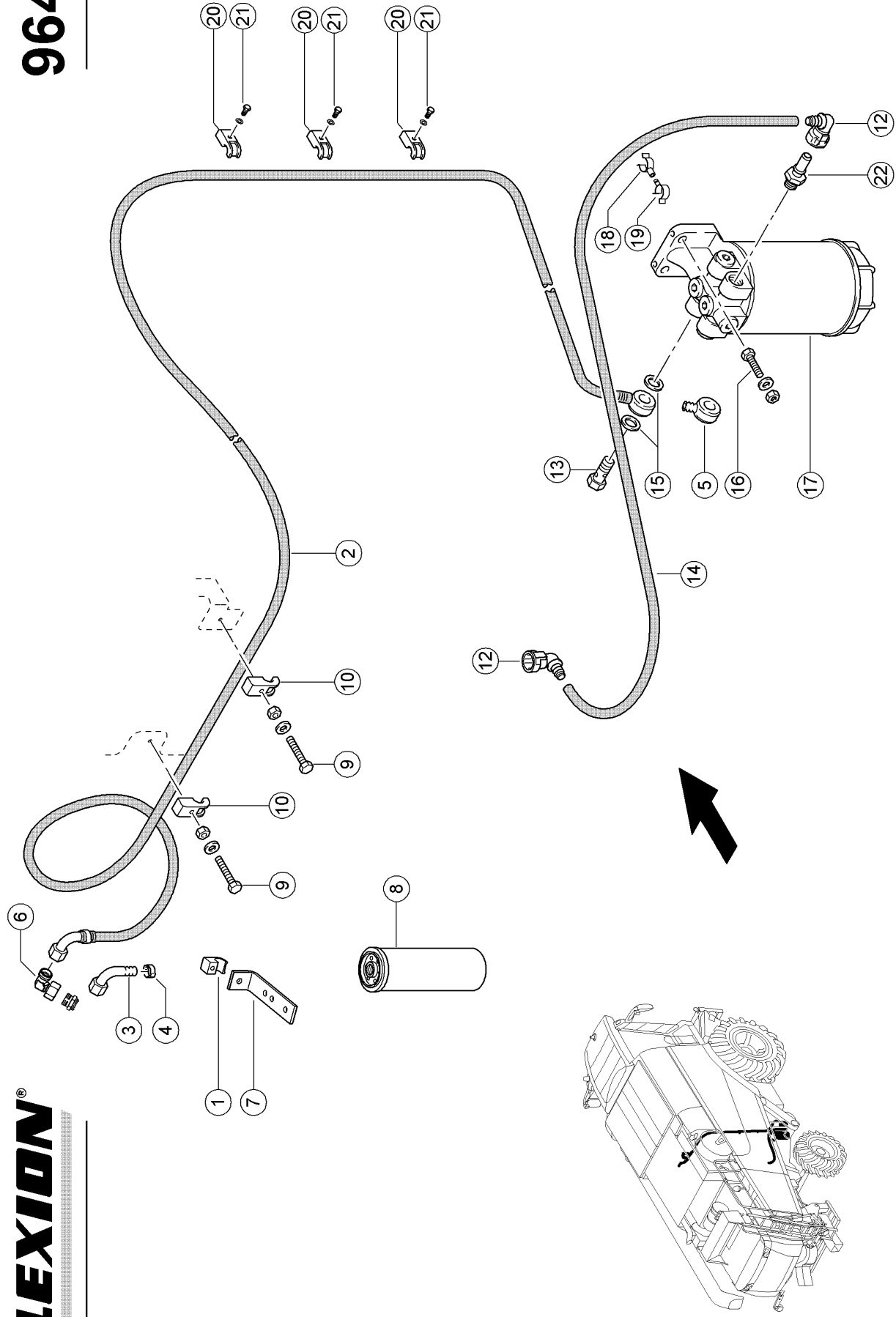
9) Remarks

Engine Cat C13

964A

LEXION®

LEXION 595-590 R



19109z01
LEXION 595R / 590R

138699

ENGINE CAT C13; FUEL SYSTEM, FUEL C 1)

Pos.	Part No.	Description	Dimension	Quantity	Conditions
1	00 0715 242 0	CLAMP	A 15	1	
2	00 0798 284 1	FUEL PIPE		1	
3	00 0796 220 1	CONNECTION	SWE90-L15-12 (N90-M22X1, 15-18	1	
4	00 0238 269 0	2-EAR-CLAMP	R16-12	1	
5	00 0216 458 0	CONNECTION	SWOE-L15	1	
6	00 0249 836 0	ANGULAR MALE CONNECTOR	20X3X79	1	
7	00 0659 359 1	SCREW-ON ANGLE		1	
8	00 0363 204 0	FUEL FILTER		1	
9	00 0242 442 0	HEXAGON HEAD BOLT	M 6X30	2	
9	00 0239 386 0	CONTACT WASHER	A 6	2	
9	00 0236 169 0	HEXAGONAL NUT	M6	2	
10	00 0715 242 0	CLAMP	A 15	2	
12	00 0798 863 0	CONNECTOR	NORMAQUICK S NW 1/2"-10- 12 - M16X1,5 (12-3 ZULÄS	2	
13	00 0096 030 0	HOLLOW SCREW		1	
14	00 0799 121 1	FUEL PIPE	TANK-FILTER	1	2)
15	00 0216 465 0	SEALING RING	D 16X22	2	
16	00 0237 442 0	HEXAGON HEAD BOLT	M8X25	2	
16	00 0239 393 1	CONTACT WASHER	B 8 -8.2X22X1,9	2	
16	00 0236 170 0	HEXAGONAL NUT	M8	2	
17	00 0796 211 0	FUEL FILTER		1	3)
18	00 0796 375 0	PIPE BRACKET	D 11	1	
19	00 0796 374 0	PIPE BRACKET	D 11	1	
20	00 0715 242 0	CLAMP	A 15	3	
21	00 0235 505 0	HEXAGON HEAD BOLT	M06X30	3	
21	00 0239 386 0	CONTACT WASHER	A 6	3	
22	00 0798 664 0	ADAPTER	M16X1,5 / 1/2" SAE J 204	1	

1) Equipment

machine no.

MD_P02_0620

C13 EWG340kW/ECExxxkW
+ from 57900470**2) Remarks**

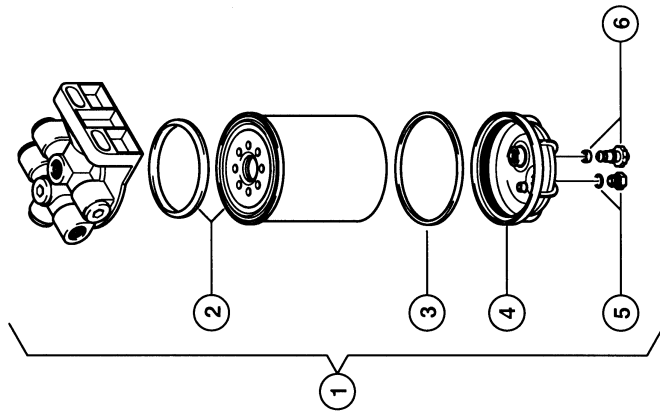
with Item 12

3) Remarks

Siehe Bildtafel 86

966

18379z00
LEXION 590R



LEXION®

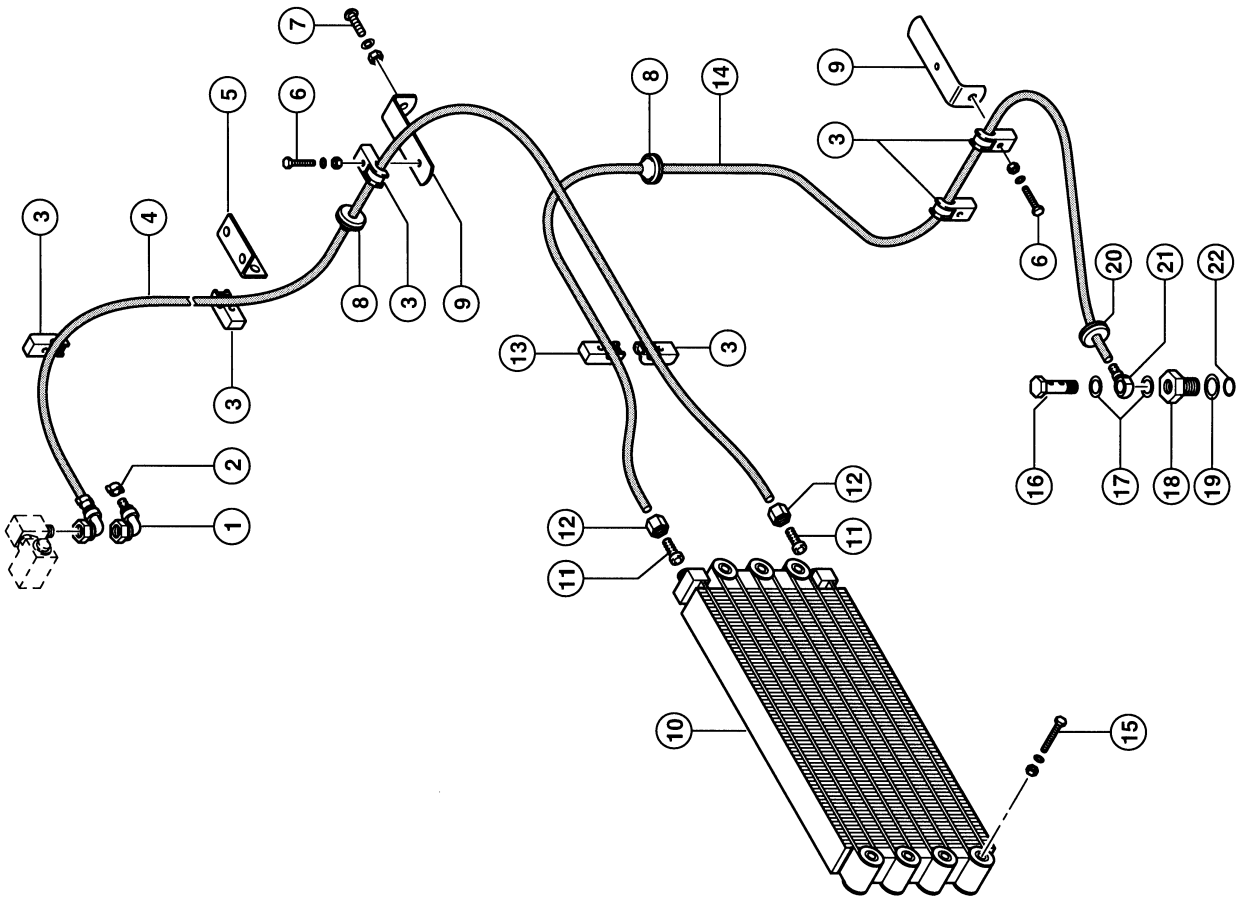


FUEL FILTER ASSEMBLIES

Pos.	Part No.	Description	Dimension	Quantity	Conditions
1	00 0796 211 0	FUEL FILTER		1	
2	00 0796 213 0	FILTER ELEMENT		1	
3	00 0796 789 0	SEALING RING		1	
4	00 1134 213 0	POT		1	1)
4	00 0796 788 0	WATER CONTAINER		1	2)
5	00 0796 791 0	SCREW PLUG		1	3)
6	00 0796 790 0	PLUG		1	3)
1)	machine no.				+ from 57900537 up to 57999999
2)	machine no.				+ from 57900011 up to 57900536 With Item 3, 5, 6
3)	machine no.				+ from 57900011 up to 57900536

967

18401z00
LEXION 590R



LEXION[®]



ENGINE CAT C12; FUEL SYSTEM, FUEL COOLER 1)

Pos.	Part No.	Description	Dimension	Quantity	Conditions
1	00 0353 723 1	CONNECTION	90°-11/16-16UN-2B	1	
2	00 0408 544 0	2-EAR CLAMP	11-13 ERS.D. 408544.1	1	
3	00 0216 117 0	CLAMP	A 10	5	
4	00 0796 196 1	FUEL PIPE	LG 1850 MM	1	2)
5	00 0659 234 1	SUPPORT BRACKET	3X60X60	1	
6	00 0238 094 0	HEXAGON HEAD BOLT	M06X25	2	
6	00 0239 386 0	CONTACT WASHER	A 6	2	
6	00 0236 169 0	HEXAGONAL NUT	M6	2	
7	00 0610 099 1	COACH BOLT	M 8X 25	1	
7	00 0239 387 0	CONTACT WASHER	A8-8,2X18X1,4	1	
7	00 0236 170 0	HEXAGONAL NUT	M8	1	
8	00 0735 998 0	GROMMET	C 6-12X24X1,5	1	
9	00 0077 376 0	SUPPORT	3X30X153	1	
9	00 0726 276 0	SUPPORT	25X4X149	1	
10	00 0350 370 0	FUEL COOLER		1	
11	00 0239 304 0	CONNECTION	D16X1,5-8	1	
12	00 0216 006 0	UNION NUT	BLL10	1	
13	00 0715 242 0	CLAMP	A 15	1	
14	00 0743 755 0	FUEL HOSE	KUEHLER-TANK LG 2250 MM	1	3)
15	00 0235 344 0	COACH BOLT	M 6X45	3	
15	00 0239 386 0	CONTACT WASHER	A 6	3	
15	00 0236 169 0	HEXAGONAL NUT	M6	3	
16	00 0096 030 0	HOLLOW SCREW	12 - M16X1,5 (12-3 ZULÄS	1	
17	00 0633 114 1	FLAT SEAL RING	D 14X20X1,5	2	
18	00 0736 256 2	THREADED INSET	6KT32X48	1	
19	00 0233 131 0	WASHER	28X 42X 1	1	
20	00 0238 250 0	GROMMET	A 24X30X3,5	1	
21	00 0216 405 0	CONNECTION	16-8 (RSN 28-0)	1	
22	00 0215 956 1	O-RING	18,4X5,33-N	1	

1) Remarks P 02/500 = Cat C12

2) Remarks 1900mm Long

3) Remarks 2280mm Long

Thank you so much for reading.
Please click the “Buy Now!”
button below to download the
complete manual.



After you pay.

You can download the most
perfect and complete manual in
the world immediately.

Our support email:

ebooklibonline@outlook.com