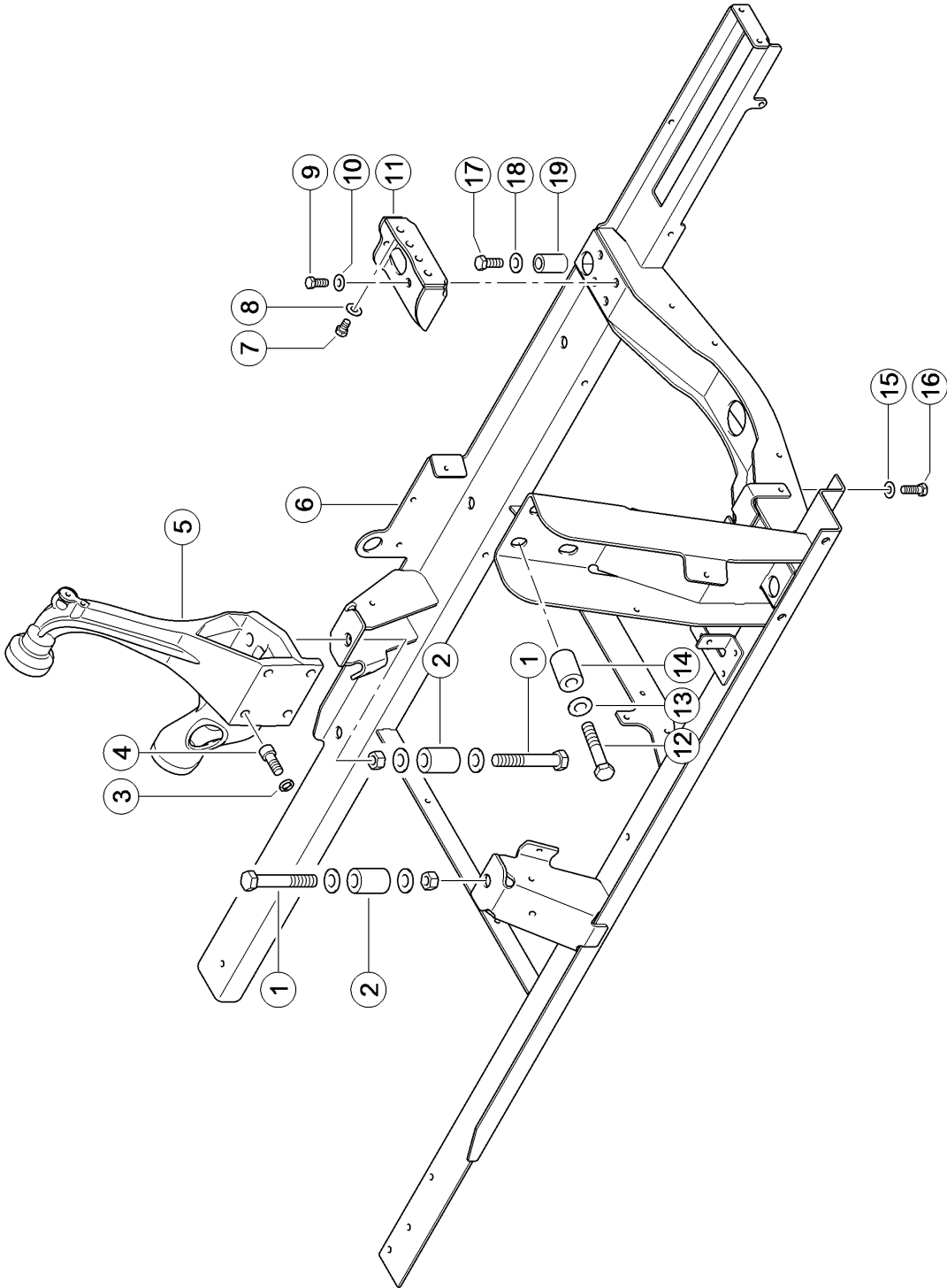


**010 COMPLETE ENGINE**

Pos.	Part No.	Description	Dimension	Quantity	Conditions
1	<b>00 0799 936 0</b>	ENGINE	C9 261KW TIER3 EPA FLEX	1	1)
<b>1)</b>	<b>Equipment</b>	MD_P02_0650	CAT C9 engine (EWG258kW/ECE243kW)		

E0167 0105A100A 1



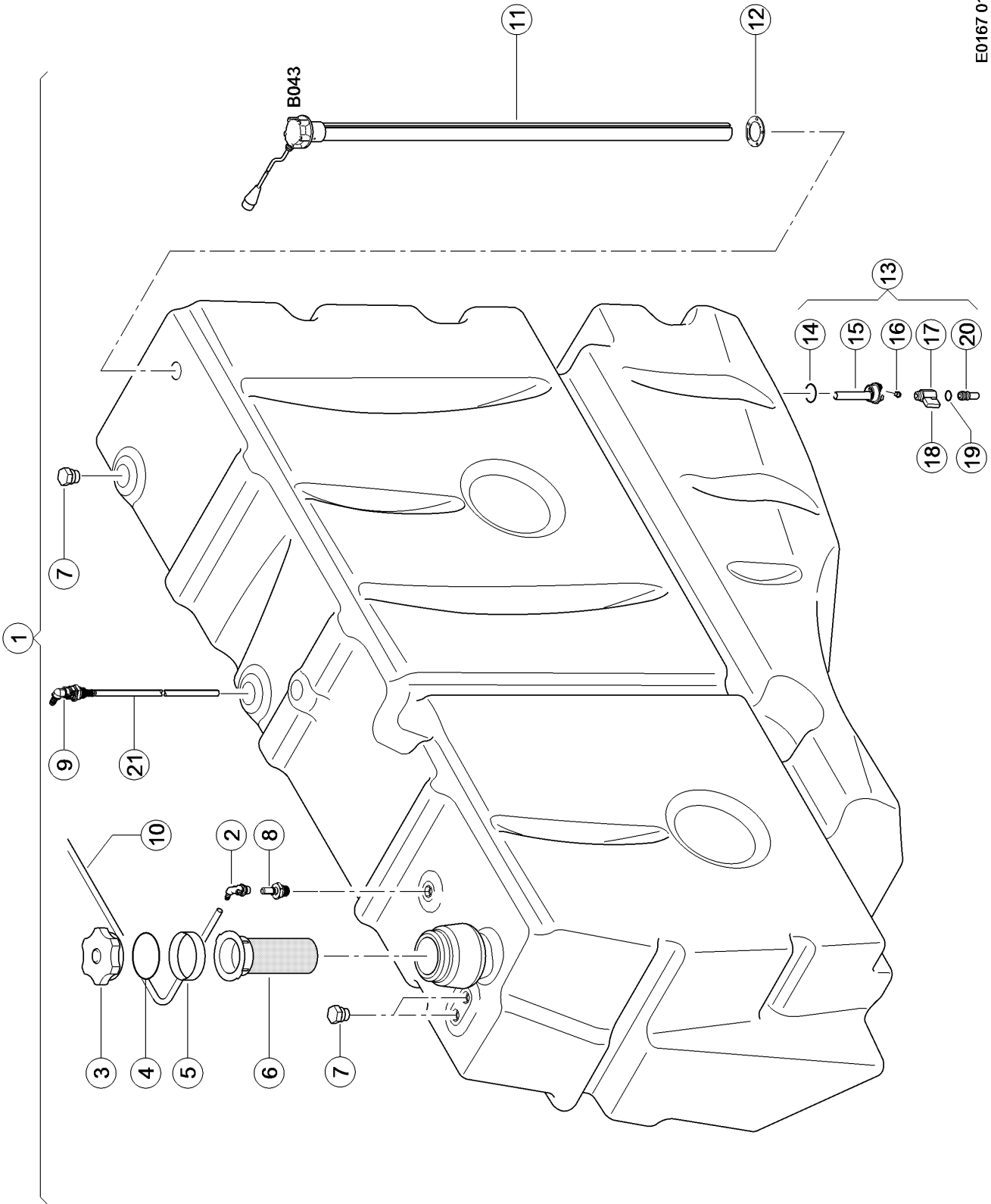
**100 ENGINE SUSPENSION 1)**

Pos.	Part No.	Description	Dimension	Quantity	Conditions
1	<b>00 0211 186 0</b>	HEXAGON HEAD BOLT	M20X130	2	
1	<b>00 0212 191 0</b>	CONTACT WASHER	A20	4	
1	<b>00 0237 521 0</b>	HEX.NUT	M20	2	
2	<b>00 0796 231 0</b>	BUSHING	D42D20.5X62	2	
3	<b>00 0215 291 1</b>	WASHER	16 -16,2X24,6X3,5	4	
4	<b>00 0214 367 0</b>	SOCKET HEAD SCREW	M16X 40	4	
5	<b>00 0796 942 1</b>	ENGINE SUPPORT		1	
6	<b>00 0799 387 2</b>	ENGINE MOUNTING	C9 BK	1	
7	<b>00 0237 458 0</b>	HEXAGON HEAD BOLT	M12X20	4	
8	<b>00 0239 389 0</b>	CONTACT WASHER	A12	4	
9	<b>00 0237 461 0</b>	HEXAGON HEAD BOLT	M12X30	4	
10	<b>00 0239 389 0</b>	CONTACT WASHER	A12	4	
11	<b>00 0799 297 0</b>	SUPPORT	6X171,6X271,6	1	
12	<b>00 0215 631 0</b>	HEXAGON HEAD BOLT	3/4-10UNC-2AX4 1/2	4	
13	<b>00 0212 191 0</b>	CONTACT WASHER	A20	4	
14	<b>00 0796 231 0</b>	BUSHING	D42D20.5X62	4	
15	<b>00 0239 389 0</b>	CONTACT WASHER	A12	1	
16	<b>00 0211 465 0</b>	HEX.HEAD BOLT	1/2-13UNC-2AX1 1/2	1	
17	<b>00 0236 230 0</b>	HEXAGON HEAD BOLT	M16X35	6	
17	<b>00 0239 415 0</b>	HEXAGON HEAD BOLT	M16X85	2	
18	<b>00 0239 391 0</b>	CONTACT WASHER	A16	8	
19	<b>00 0796 273 0</b>	BUSHING	D32/D18X50	2	

**1) Equipment**

MD\_P02\_0650

CAT C9 engine (EWG258kW/ECE243kW)



E0167 0125A100A 1



**100 FUEL TANK**

Pos.	Part No.	Description	Dimension	Quantity	Conditions
1	<b>00 0506 711 1</b>	FUEL TANK	800 LTR OHNE Z-TANK	1	1)
2	<b>00 0217 501 0</b>	CONNECTOR	NQS 1/2" - 6 X 90 GRAD	1	
3	<b>00 0217 508 0</b>	CAP	DV 80 GL OHNE LÜFTUNG	1	
3	<b>00 0177 621 0</b>	CAP	D80 BELUEFTET, ABSCHLIES	1	2)
4	<b>00 0211 701 0</b>	O-RING	91,67X3,53-N	1	
5	<b>00 0038 915 0</b>	SOCKET	SV 80 B/40	1	
6	<b>00 0736 238 0</b>	TANK FILTER		1	
7	<b>00 0783 648 2</b>	BLIND PLUG		3	
8	<b>00 0794 417 2</b>	VENTILATION		1	
9	<b>00 0783 649 1</b>	ADAPTER		1	
9	<b>00 0217 460 0</b>	O-RING	18,64X3,53 -N	1	
10	<b>00 0202 240 0</b>	HOSE	A 6X10	1	3)
10	<b>00 0217 507 0</b>	PIPE BRACKET	NW 7,5	4	
11	<b>00 0016 596 3</b>	LEVEL INDICATOR	L=1320MM	1	4)
12	<b>00 0794 993 0</b>	GASKET	VORRATSGEBER	1	
13	<b>00 0794 414 1</b>	CONNECTION	MIT W.ABLAS ; KUGELH. ;	1	5)
14	<b>00 0217 459 1</b>	O-RING	27X4,0 -N	1	
15	<b>00 0783 643 1</b>	PLUG	WASSER + G3/8"	1	
16	<b>00 0687 625 1</b>	HEXAGON HEAD BOLT	M8X17 F. TANK WASSERABLA	1	
17	<b>00 0783 652 0</b>	BALL-TYPE TAP	DN8-I-G3/8XA-G3/8	1	
18	<b>00 0783 658 0</b>	ANTI-ROTAT. LOCK	FUER 3/8" KUGELHAHN	1	
19	<b>00 0216 366 0</b>	O-RING	10,50X1,5 NBR80	1	
20	<b>00 0783 644 1</b>	ADAPTOR	G3/8"- 1/2" SAE J 2044	1	
21	<b>00 0136 559 0</b>	TUBE	12,5X1,25X10000	1	6)

**1) Remarks** with Item 3 - 12

**2) Remarks** LOCKING

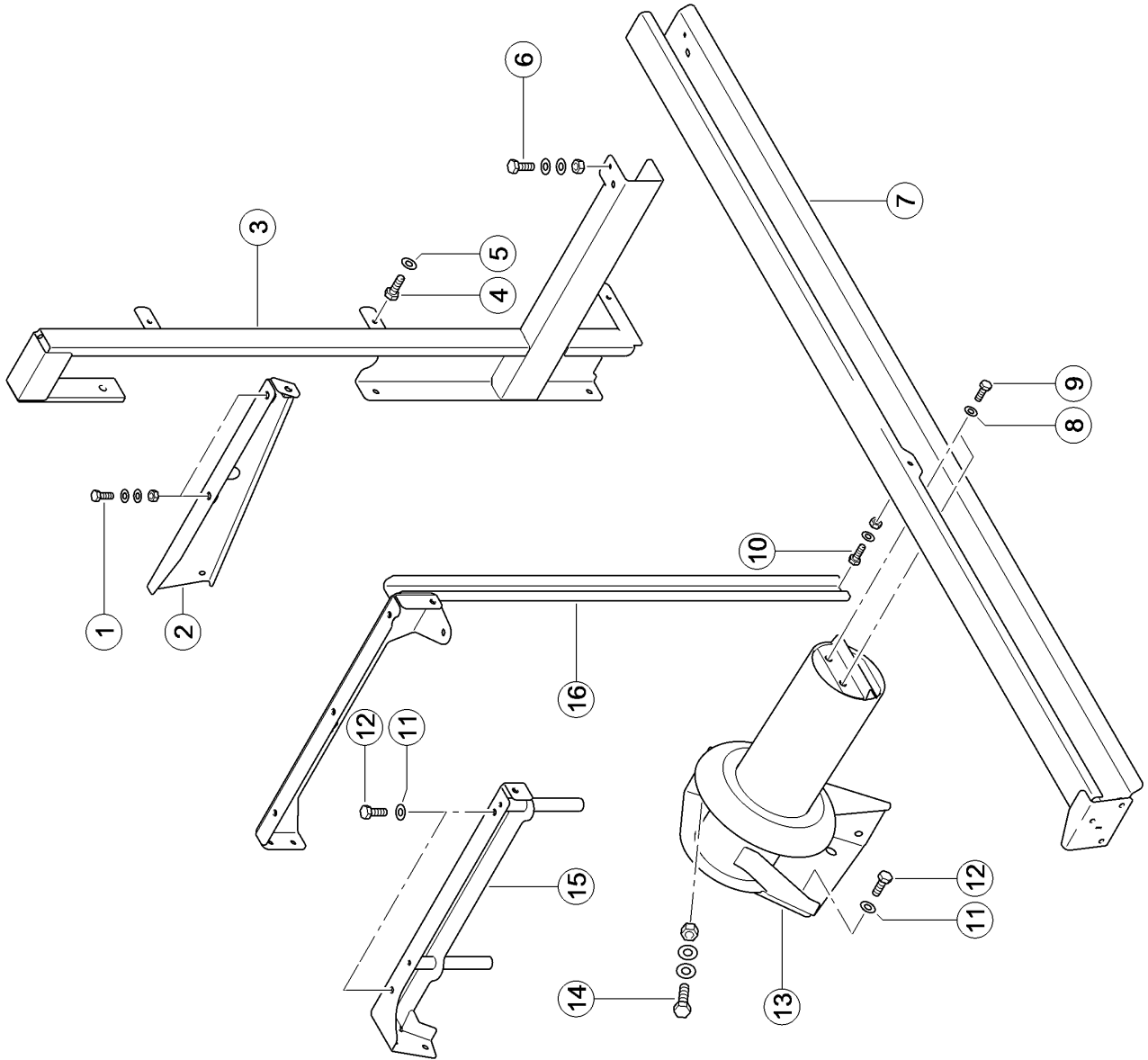
**3) Remarks** 2800 long

**4) CCN** CCN-B043 fuel level sensor

**5) Remarks** with item 14 - 20

**6) Remarks** 1290 long

E0167 0125A100A 2

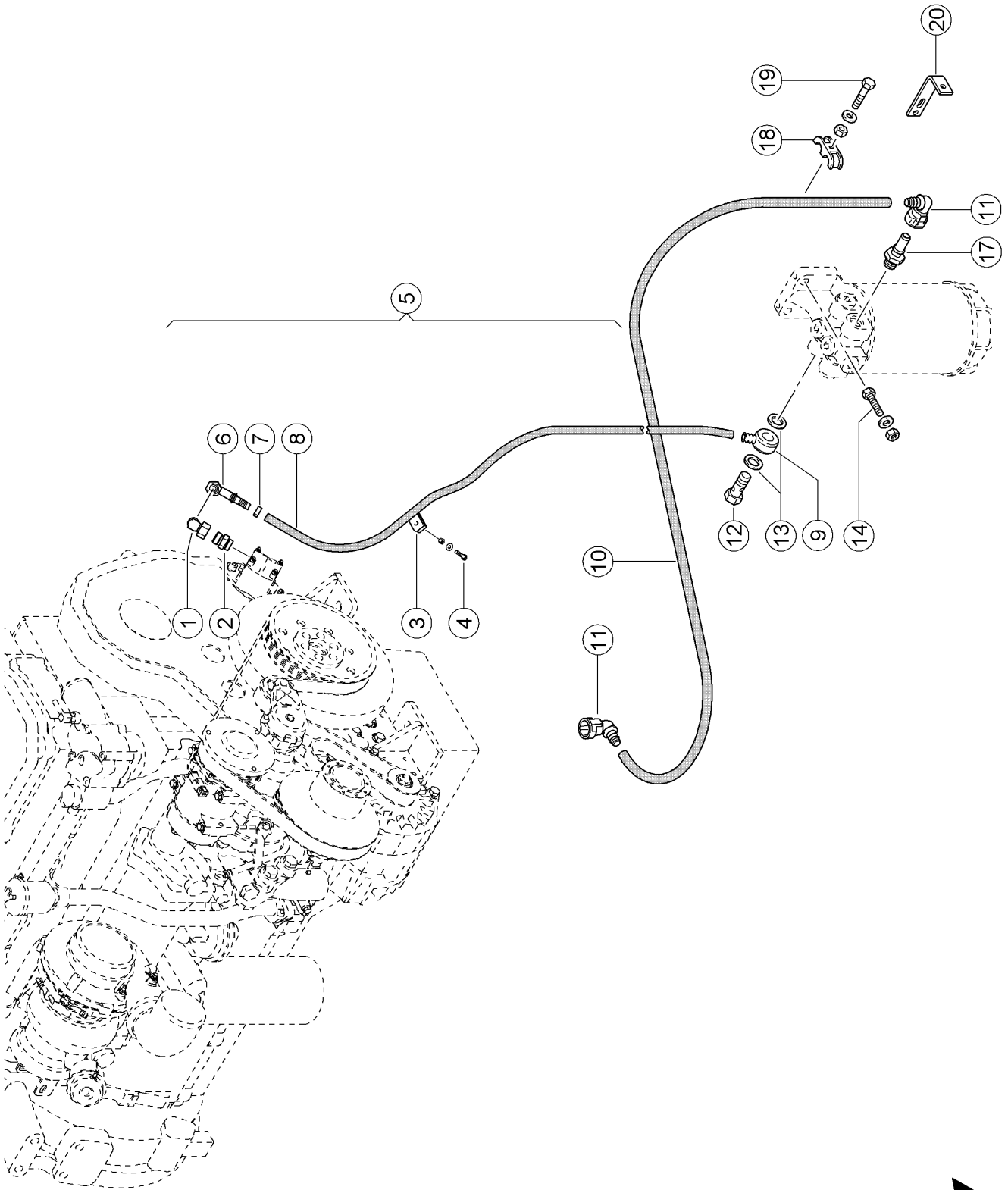


**100 FUEL TANK**

<b>Pos.</b>	<b>Part No.</b>	<b>Description</b>	<b>Dimension</b>	<b>Quantity</b>	<b>Conditions</b>
1	<b>00 0237 370 0</b>	HEXAGON HEAD BOLT	M8X30	2	
1	<b>00 0239 387 0</b>	CONTACT WASHER	A8-8,2X18X1,4	4	
1	<b>00 0236 170 0</b>	HEXAGONAL NUT	M8	2	
2	<b>00 0794 842 2</b>	FASTENER	1700	1	
3	<b>00 0794 858 4</b>	SUPPORT	1700	1	
4	<b>00 0237 453 0</b>	HEXAGON HEAD BOLT	M10X30	3	
5	<b>00 0239 388 0</b>	CONTACT WASHER	A10-10,2X22,25X1,6	3	
6	<b>00 0237 453 0</b>	HEXAGON HEAD BOLT	M10X30	1	
6	<b>00 0239 388 0</b>	CONTACT WASHER	A10-10,2X22,25X1,6	2	
6	<b>00 0236 171 0</b>	HEXAGONAL NUT	M10	1	
7	<b>00 0794 855 1</b>	SUPPORT		1	
8	<b>00 0239 387 0</b>	CONTACT WASHER	A8-8,2X18X1,4	2	
9	<b>00 0237 439 0</b>	HEXAGON HEAD BOLT	M8X16	2	
10	<b>00 0237 439 0</b>	HEXAGON HEAD BOLT	M8X16	3	
10	<b>00 0239 387 0</b>	CONTACT WASHER	A8-8,2X18X1,4	4	
10	<b>00 0236 170 0</b>	HEXAGONAL NUT	M8	1	
11	<b>00 0239 388 0</b>	CONTACT WASHER	A10-10,2X22,25X1,6	2	
12	<b>00 0237 453 0</b>	HEXAGON HEAD BOLT	M10X30	2	
13	<b>00 0794 854 1</b>	MAIN FRAME	1700	1	
14	<b>00 0237 461 0</b>	HEXAGON HEAD BOLT	M12X30	4	
14	<b>00 0239 387 0</b>	CONTACT WASHER	A8-8,2X18X1,4	8	
14	<b>00 0236 172 0</b>	HEXAGONAL NUT	M12	4	
15	<b>00 0794 856 2</b>	SUPPORT	1700 / 800 LTR	1	
16	<b>00 0794 857 1</b>	SUPPORT	1700	1	



E0167 0125A140A 1



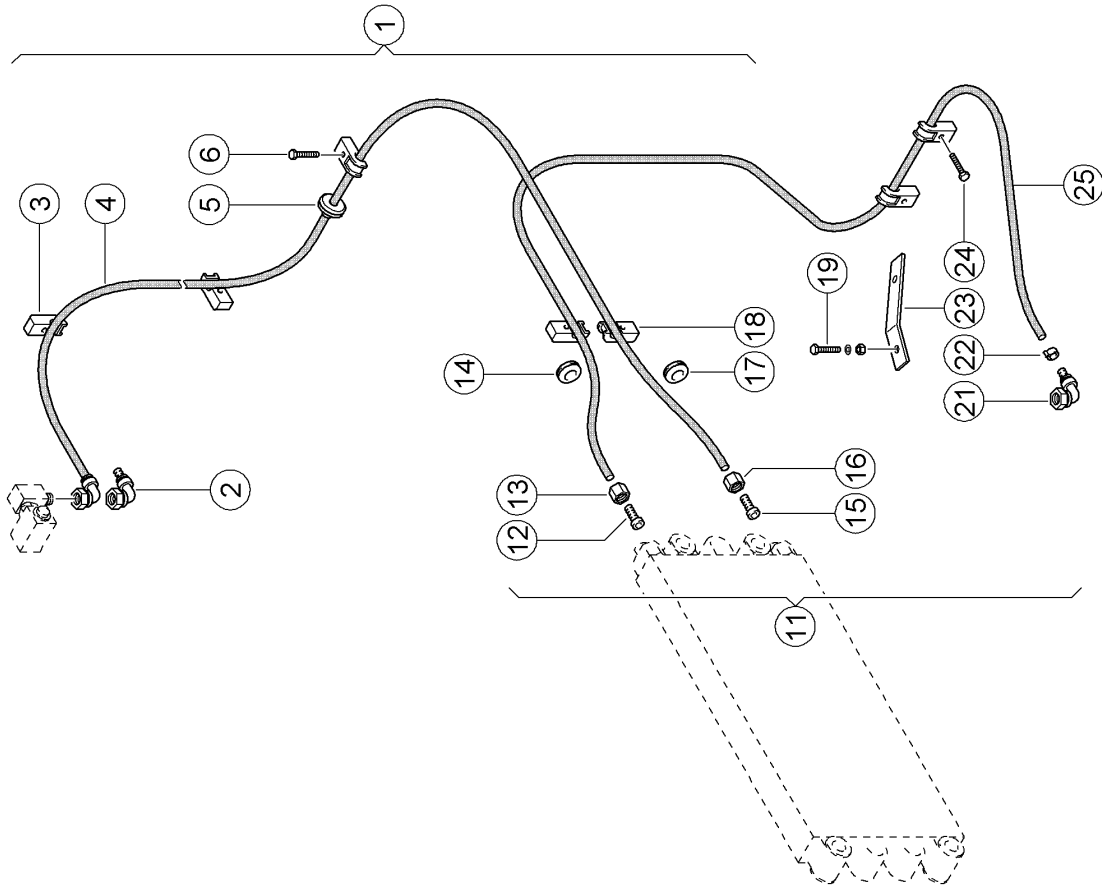
**140 FUEL PIPES**

Pos.	Part No.	Description	Dimension	Quantity	Conditions
1	<b>00 0249 836 0</b>	ANGULAR MALE CONNECTOR	SWOE-L15	1	
2	<b>00 0239 037 0</b>	TIE-IN UNION	SDS-L15X3/4-16UNF-2A-TYP	1	
3	<b>00 0715 242 0</b>	CLAMP	A 15	1	
4	<b>00 0242 442 0</b>	HEXAGON HEAD BOLT	M 6X30	1	
4	<b>00 0239 386 0</b>	CONTACT WASHER	A 6	1	
4	<b>00 0236 169 0</b>	HEXAGONAL NUT	M6	1	
5	<b>00 0796 197 0</b>	FUEL PIPE	LG 3500 MM	1	1)
6	<b>00 0796 209 1</b>	CONNECTION	SWE-10X12	1	
7	<b>00 0238 269 0</b>	2-EAR-CLAMP	15-18	1	
8	<b>00 0136 591 0</b>	PLASTIC TUBE	15 X1,5X10000	1	2)
9	<b>00 0216 458 0</b>	CONNECTION	R16-12	1	
10	<b>00 0799 121 1</b>	FUEL PIPE	TANK-FILTER	1	3)
11	<b>00 0798 863 0</b>	CONNECTOR	NORMAQUICK S NW 1/2"-10-	2	
12	<b>00 0096 030 0</b>	HOLLOW SCREW	12 - M16X1,5 (12-3 ZULÄS	1	
13	<b>00 0216 465 0</b>	SEALING RING	D 16X22	2	
14	<b>00 0237 442 0</b>	HEXAGON HEAD BOLT	M8X25	2	
14	<b>00 0239 393 1</b>	CONTACT WASHER	B 8 -8.2X22X1,9	2	
14	<b>00 0236 170 0</b>	HEXAGONAL NUT	M8	2	
17	<b>00 0798 664 0</b>	ADAPTER	M16X1,5 / 1/2" SAE J 204	2	
18	<b>00 0715 242 0</b>	CLAMP	A 15	3	
18	<b>00 0216 117 0</b>	CLAMP	A 10	1	
19	<b>00 0235 505 0</b>	HEXAGON HEAD BOLT	M06X30	3	
19	<b>00 0238 094 0</b>	HEXAGON HEAD BOLT	M06X25	1	
19	<b>00 0239 386 0</b>	CONTACT WASHER	A 6	5	
19	<b>00 0236 169 0</b>	HEXAGONAL NUT	M6	5	
20	<b>00 0713 845 1</b>	SUPPORT ANGLE	25X5X130	1	

**1) Remarks** with Item 6 + 9

**2) Remarks** 3500 long

**3) Remarks** with Item 11



**140 FUEL PIPES**

Pos.	Part No.	Description	Dimension	Quantity	Conditions
1	<b>00 0799 908 2</b>	FUEL PIPE	KUEHLER-TANK LG 2400 MM	1	1)
2	<b>00 0798 863 0</b>	CONNECTOR	NORMAQUICK S NW 1/2"-10-	1	
3	<b>00 0216 117 0</b>	CLAMP	A 10	4	
4	<b>00 0136 559 0</b>	TUBE	12,5X1,25X10000	1	2)
5	<b>00 0735 998 0</b>	GROMMET	C 6-12X24X1,5	1	
6	<b>00 0238 094 0</b>	HEXAGON HEAD BOLT	M06X25	2	
11	<b>00 0798 135 2</b>	FUEL PIPE	LG 1236 MM	1	
12	<b>00 0239 304 0</b>	CONNECTION	D16X1,5-8	1	
13	<b>00 0216 006 0</b>	UNION NUT	BLL10	1	
14	<b>00 0735 998 0</b>	GROMMET	C 6-12X24X1,5	1	
15	<b>00 0215 167 0</b>	CONNECTION	D16X1,5-10	1	
16	<b>00 0216 006 0</b>	UNION NUT	BLL10	1	
17	<b>00 0238 250 0</b>	GROMMET	A 24X30X3,5	1	
18	<b>00 0216 117 0</b>	CLAMP	A 10	6	
19	<b>00 0242 442 0</b>	HEXAGON HEAD BOLT	M 6X30	1	
19	<b>00 0239 386 0</b>	CONTACT WASHER	A 6	1	
19	<b>00 0236 169 0</b>	HEXAGONAL NUT	M6	1	
21	<b>00 0353 723 1</b>	CONNECTION	90°-11/16-16UN-2B	1	
22	<b>00 0408 544 1</b>	CLAMP	10,8-13,3 STEPLESS	1	
23	<b>00 0726 276 0</b>	SUPPORT	25X4X149	1	3)
24	<b>00 0242 442 0</b>	HEXAGON HEAD BOLT	M 6X30	5	
25	<b>00 0136 533 0</b>	TUBE	11X1,5X10000	1	4)

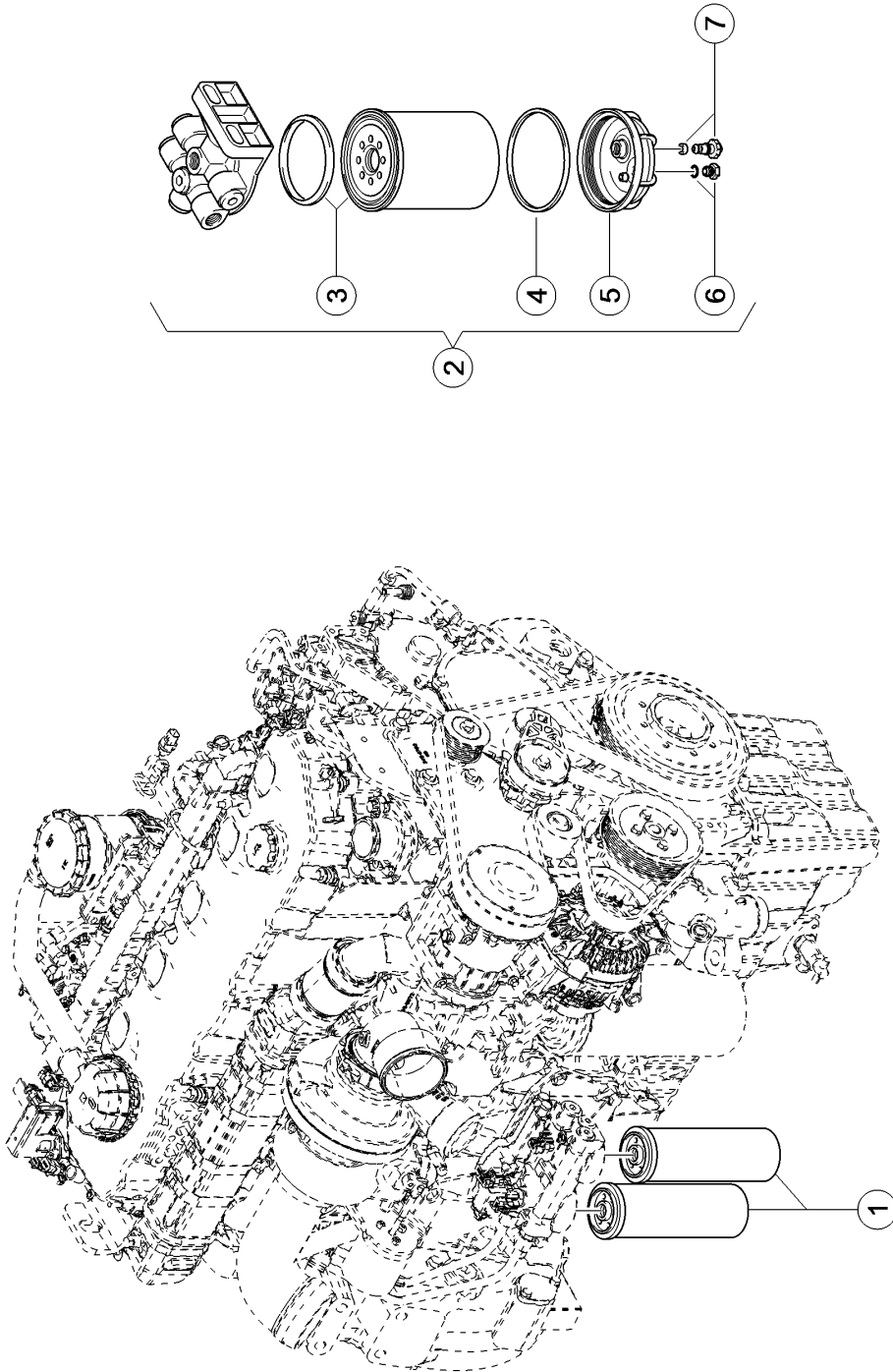
**1) Remarks** with Item 2,4,5,15 - 17

**2) Remarks** 2400 long

**3) machine no.** + up to C4400042

**4) Remarks** 3450 long

E0167 0125A160A 1



**160 FUEL FILTER**

Pos.	Part No.	Description	Dimension	Quantity	Conditions
1	<b>00 0799 208 1</b>	FUEL FILTER		2	1)
1	<b>00 0363 204 1</b>	FUEL FILTER		1	2)
2	<b>00 0796 211 0</b>	FUEL FILTER		1	
3	<b>00 0796 213 0</b>	FILTER ELEMENT		1	
4	<b>00 0796 789 0</b>	SEALING RING		1	
5	<b>00 0796 788 0</b>	WATER CONTAINER		1	
6	<b>00 0796 791 0</b>	SCREW PLUG		1	
7	<b>00 0796 790 0</b>	PLUG		1	

**1) Equipment**

MD\_P02\_0664

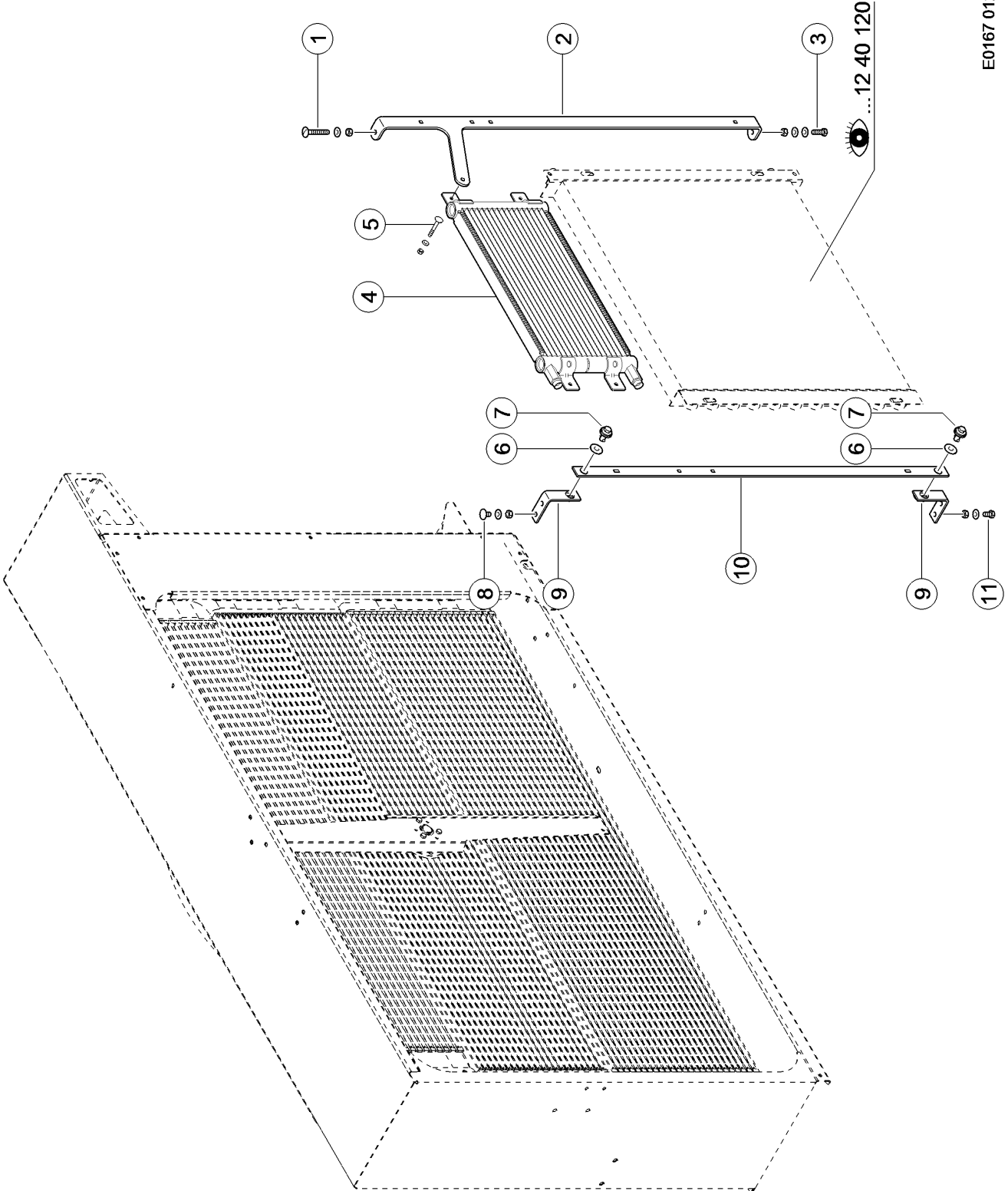
Caterpillar C9.3 - 294 kW/400 hp (T4i)

**2) Equipment**

MD\_P02\_0650

CAT C9 engine (EWG258kW/ECE243kW)

E0167 0125A180A 1



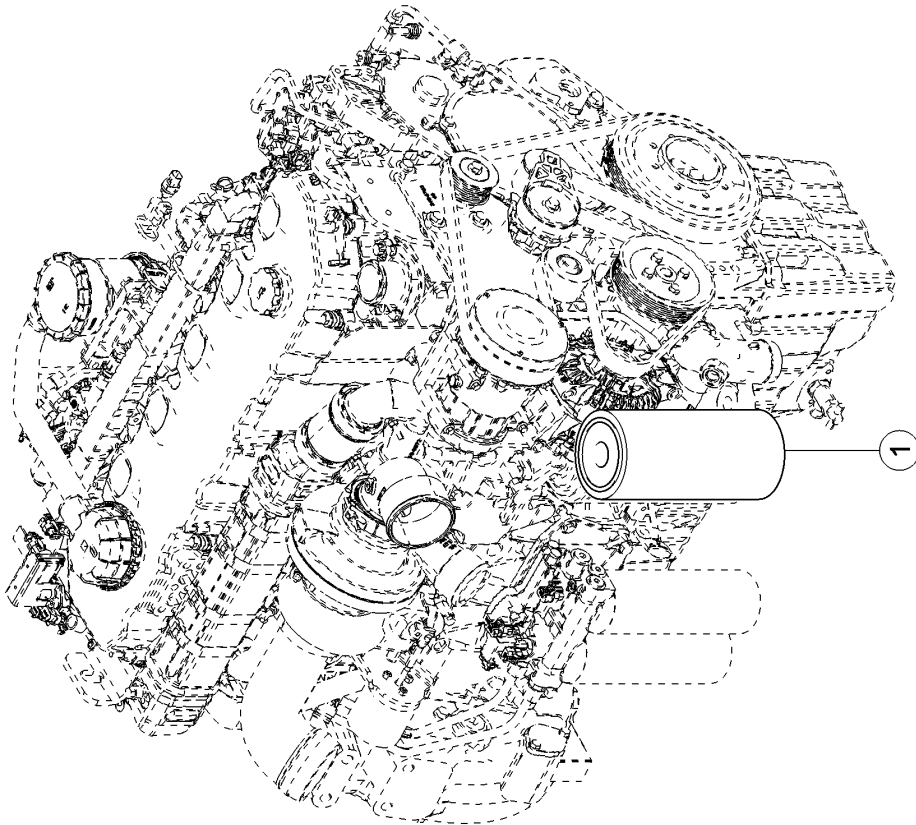
**180 FUEL COOLER**

Pos.	Part No.	Description	Dimension	Quantity	Conditions
1	<b>00 0211 307 0</b>	COACH BOLT	M 8X 55	1	
1	<b>00 0239 393 1</b>	CONTACT WASHER	B 8 -8.2X22X1,9	1	
1	<b>00 0236 170 0</b>	HEXAGONAL NUT	M8	1	
2	<b>00 0796 828 1</b>	BRACKET	5X190X982	1	
3	<b>00 0237 442 0</b>	HEXAGON HEAD BOLT	M8X25	1	
3	<b>00 0239 393 1</b>	CONTACT WASHER	B 8 -8.2X22X1,9	2	
3	<b>00 0236 170 0</b>	HEXAGONAL NUT	M8	1	
4	<b>00 0780 096 0</b>	FUEL COOLER		1	1)
4	<b>00 0350 370 0</b>	FUEL COOLER		1	2)
5	<b>00 0233 689 0</b>	COACH BOLT	M 6X20X15	3	
5	<b>00 0239 392 0</b>	CONTACT WASHER	B 6 -6X18X1,4	3	
5	<b>00 0236 169 0</b>	HEXAGONAL NUT	M6	3	
6	<b>00 0601 243 0</b>	SUPPORTING WASHER	10,8X25X0,6	2	
7	<b>00 0606 163 0</b>	LOCK TRUNNION	10/ 7,74- 8,49	2	
8	<b>00 0610 097 1</b>	COACH BOLT	M8X16	2	
8	<b>00 0239 393 1</b>	CONTACT WASHER	B 8 -8.2X22X1,9	2	
8	<b>00 0236 170 0</b>	HEXAGONAL NUT	M8	2	
9	<b>00 0796 139 0</b>	SUPPORT ANGLE		2	
10	<b>00 0796 145 0</b>	SUPPORT	25X4X895	1	
11	<b>00 0237 439 0</b>	HEXAGON HEAD BOLT	M8X16	2	
11	<b>00 0239 393 1</b>	CONTACT WASHER	B 8 -8.2X22X1,9	2	
11	<b>00 0236 170 0</b>	HEXAGONAL NUT	M8	2	

**1) machine no.** + from C4400061

**2) machine no.** + up to C4400060

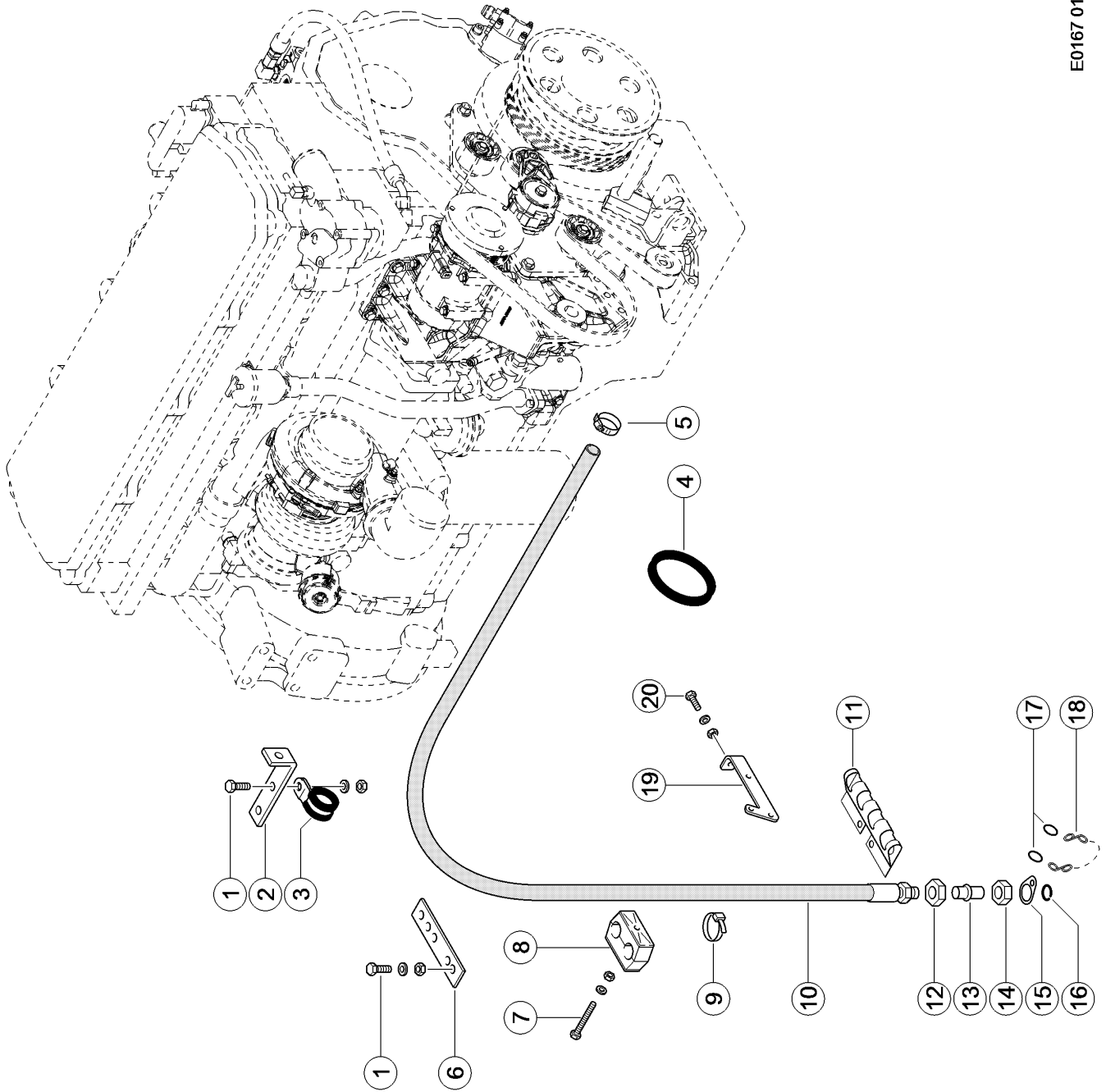




**120 OIL FILTER 1)**

Pos.	Part No.	Description	Dimension	Quantity	Conditions
1	<b>00 0798 303 1</b>	ENGINE OIL FILTER		1	
<b>1)</b>	<b>Equipment</b>	MD_P02_0664	Caterpillar C9.3 - 294 kW/400 hp (T4i)		

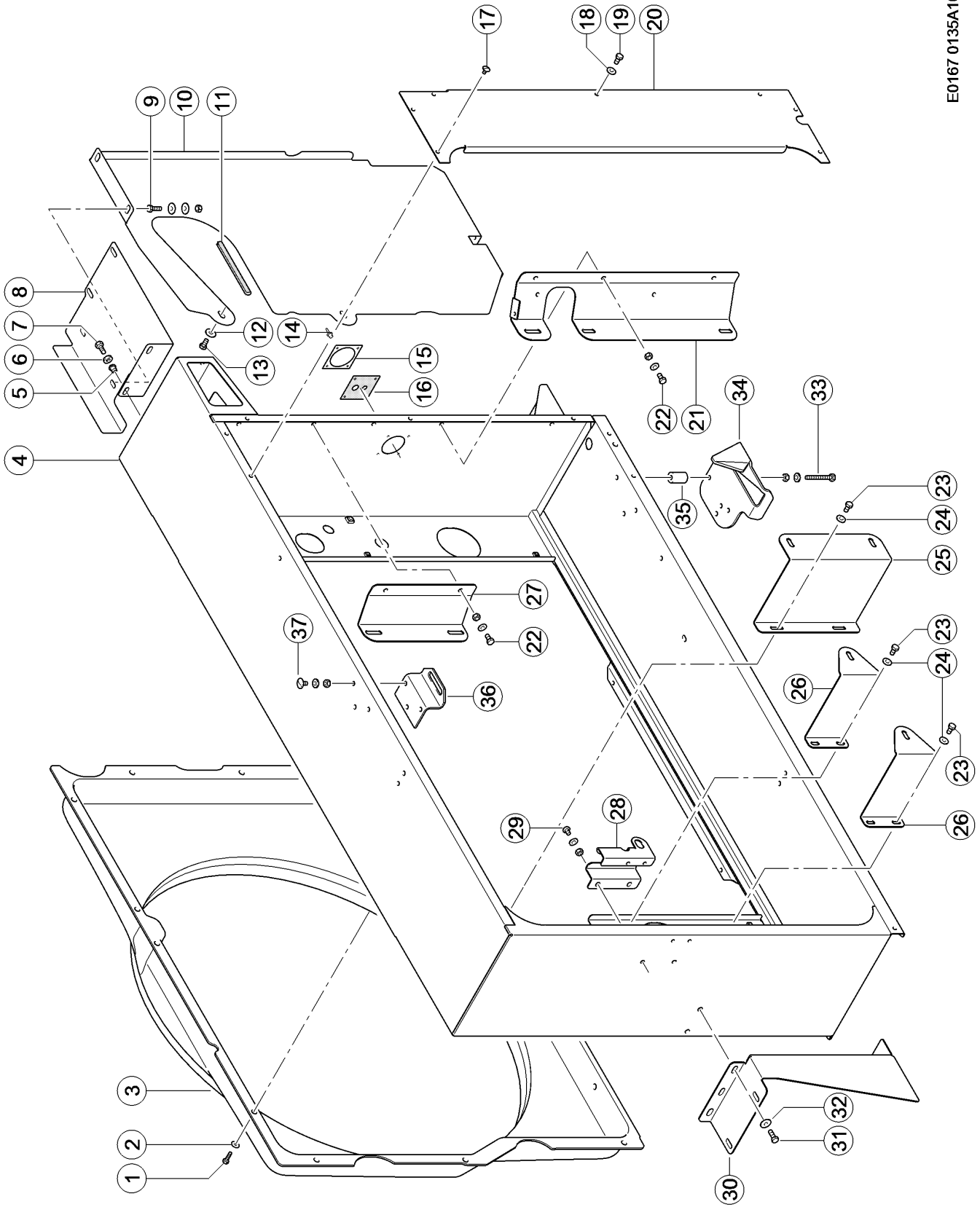
E0167 0130A200A 1



**200 OIL DRAIN HOSE**

Pos.	Part No.	Description	Dimension	Quantity	Conditions
1	<b>00 0237 442 0</b>	HEXAGON HEAD BOLT	M8X25	5	
1	<b>00 0239 387 0</b>	CONTACT WASHER	A8-8,2X18X1,4	5	
1	<b>00 0236 170 0</b>	HEXAGONAL NUT	M8	5	
2	<b>00 0073 012 1</b>	ANGLE	30X5X160	1	
3	<b>00 0215 394 0</b>	HOLDER CLAMP	D1-24X20	4	
4	<b>00 0136 503 0</b>	EDGE PROTECTOR	25000 LG	1	1)
5	<b>00 0238 267 3</b>	HOSE CLAMP	A - 20-32X12	2	
7	<b>00 0235 522 0</b>	HEXAGON HEAD BOLT	M8 X 65	2	
7	<b>00 0239 387 0</b>	CONTACT WASHER	A8-8,2X18X1,4	2	
7	<b>00 0236 170 0</b>	HEXAGONAL NUT	M8	2	
8	<b>00 0689 060 0</b>	CLAMP	Z KP-3-R-25-25-PA	2	
9	<b>00 0697 798 0</b>	CABLE TIE	7,6X290X1,9	2	
10	<b>00 0350 390 1</b>	OIL DRAIN HOSE		1	
11	<b>00 0771 504 0</b>	SUPPORT	3,0X126X230	1	
12	<b>00 0215 103 0</b>	FLAT HEX NUT	M22X1,5	1	
13	<b>00 0077 528 2</b>	DRAIN FITTING	D18,1X51,5	1	
14	<b>00 0633 589 1</b>	UNION NUT	A3 L15	1	
15	<b>00 0077 529 0</b>	STRAP	1,0X0026X0041	1	
16	<b>00 0215 080 0</b>	SNAP RING	A 14	1	
17	<b>00 0002 846 0</b>	RING	SPIRALFÖRMIG OFFEN2 16 X		
18	<b>00 0002 848 0</b>	KNOT CHAIN	1,8X 25X 6GL	1	
19	<b>00 0772 119 1</b>	SUPPORT	5X63X204	1	
20	<b>00 0233 243 0</b>	HEXAGON HEAD BOLT	M08X25-MKL	2	
20	<b>00 0239 387 0</b>	CONTACT WASHER	A8-8,2X18X1,4	2	
20	<b>00 0236 170 0</b>	HEXAGONAL NUT	M8	2	
<b>1)</b>	<b>Remarks</b>	200 mm long			

E0167 0135A100A 1



Thank you so much for reading.  
Please click the “Buy Now!”  
button below to download the  
complete manual.



After you pay.

You can download the most  
perfect and complete manual in  
the world immediately.

Our support email:

[ebooklibonline@outlook.com](mailto:ebooklibonline@outlook.com)