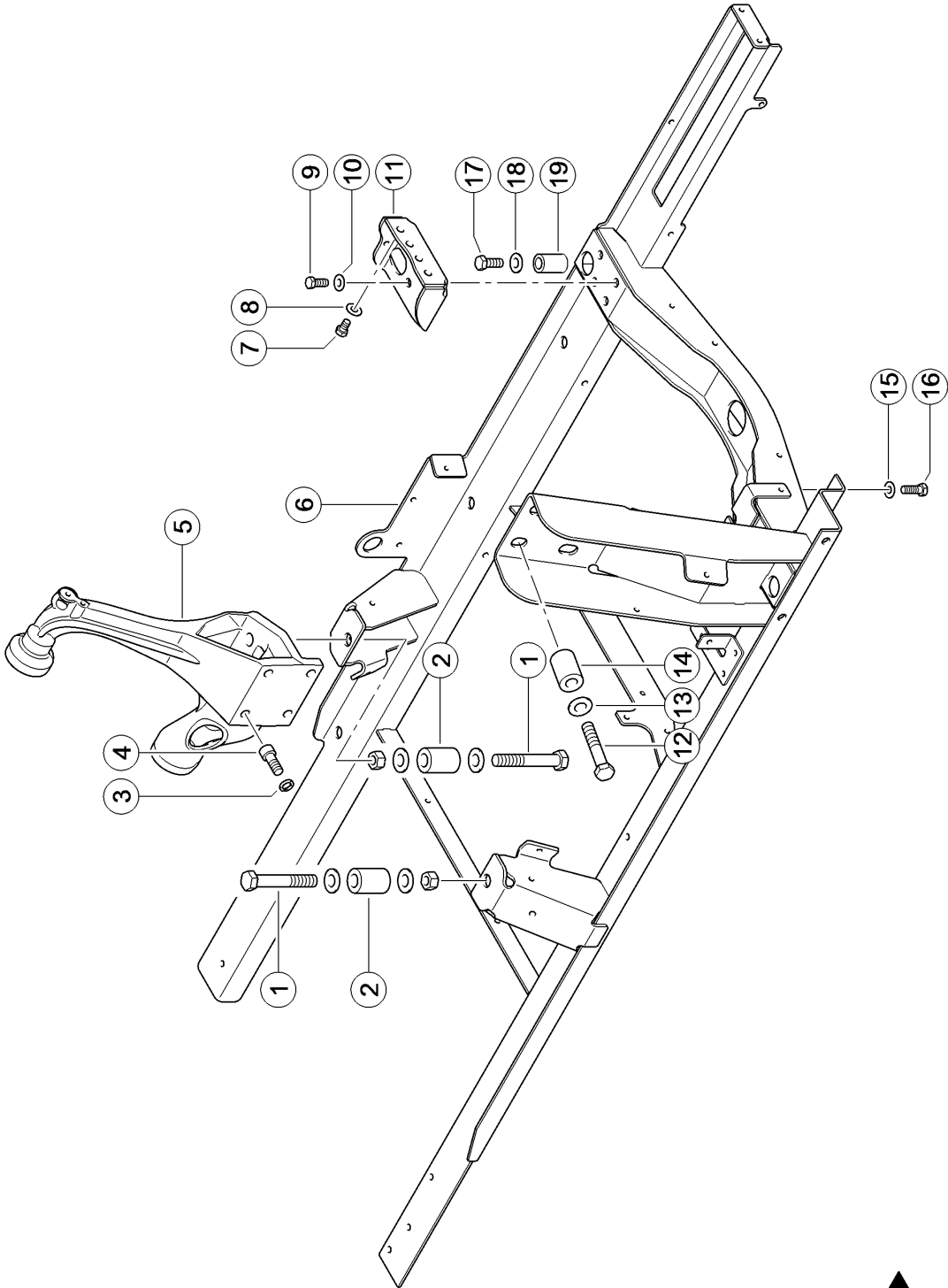


**010 COMPLETE ENGINE**

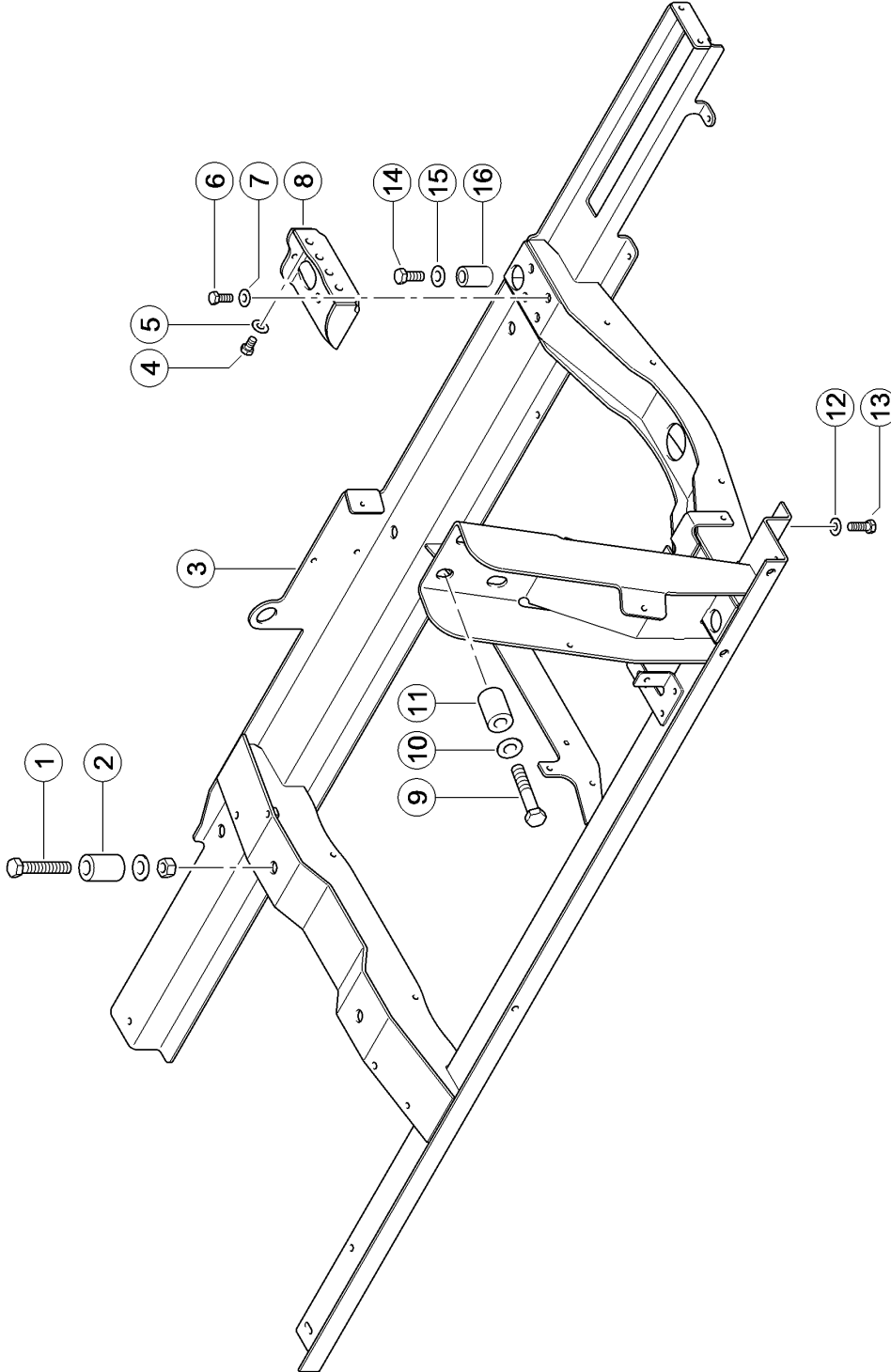
Pos.	Part No.	Description	Dimension	Quantity	Conditions
1	<b>00 0799 882 0</b>	ENGINE	C9 232KW, 2100RPM, LRC	1	1)
1	<b>00 0799 883 0</b>	ENGINE	C9 232KW, 2100RPM, LRC	1	2)
1	<b>00 0799 928 1</b>	ENGINE	C9.3 305 KW TIER 4I	1	3)
1	<b>00 0799 929 1</b>	ENGINE	C9.3 305 KW TIER 4I	1	4)
1	<b>00 2599 906 0</b>	ENGINE	C9.3 330KW/305KW STAGE I	1	5)
1	<b>00 2599 907 0</b>	ENGINE	C9.3 330KW/305KW STAGE I	1	6)
1	<b>00 0773 906 0</b>	ENGINE		1	7)
1	<b>00 0773 907 0</b>	ENGINE		1	8)
1	<b>00 0773 916 0</b>	ENGINE	KONSERVIERT	1	9)
1	<b>00 0773 917 0</b>	ENGINE	KONSERVIERT	1	10)
1	<b>00 2599 906 0</b>	ENGINE	C9.3 330KW/305KW STAGE I	1	11)
1	<b>00 2599 907 0</b>	ENGINE	C9.3 330KW/305KW STAGE I	1	12)
<b>1)</b>	<b>Equipment</b>	MD_P02_0658	C9 R120 232/251 kW T3		
<b>2)</b>	<b>Equipment</b>	MD_P02_0659	C9K R120 232/251 kW T3		
<b>3)</b>	<b>Equipment</b> <b>machine no.</b>	MD_P02_0270	Caterpillar C9.3 - 330 kW/449 hp (T4i) + up to C6401092 Replacement / Reman: without air compressor, without attachment pa		
<b>4)</b>	<b>Equipment</b> <b>machine no.</b>	MD_P02_0271	Caterpillar C9.3 - 330 kW/449 hp (T4i) with air compressor + up to C6401092 Replacement / Reman: without air compressor, without attachment pa		
<b>5)</b>	<b>Equipment</b>	MD_P02_0270	Caterpillar C9.3 - 330 kW/449 hp (T4i)		
<b>6)</b>	<b>Equipment</b> <b>machine no.</b>	MD_P02_0271	Caterpillar C9.3 - 330 kW/449 hp (T4i) with air compressor + from C6401093 up to C6401693		
<b>7)</b>	<b>Equipment</b> <b>machine no.</b>	MD_P02_0270	Caterpillar C9.3 - 330 kW/449 hp (T4i) + from C6401093 up to C6402090 Replacement / Reman: without air compressor, without attachment pa		
<b>8)</b>	<b>Equipment</b> <b>Remarks</b>	MD_P02_0271	Caterpillar C9.3 - 330 kW/449 hp (T4i) with air compressor Replacement / Reman: without air compressor, without attachment pa		
<b>9)</b>	<b>Equipment</b> <b>machine no.</b>	MD_P02_0270	Caterpillar C9.3 - 330 kW/449 hp (T4i) + from C6402091 up to C6402810 Replacement / Reman: without air compressor, without attachment pa		
<b>10)</b>	<b>Equipment</b> <b>machine no.</b>	MD_P02_0271	Caterpillar C9.3 - 330 kW/449 hp (T4i) with air compressor + from C6401694 up to C6402810 Replacement / Reman: without air compressor, without attachment pa		
<b>11)</b>	<b>Equipment</b> <b>machine no.</b>	MD_P02_0270	Caterpillar C9.3 - 330 kW/449 hp (T4i) + from C6402811		
<b>12)</b>	<b>Equipment</b> <b>machine no.</b>	MD_P02_0271	Caterpillar C9.3 - 330 kW/449 hp (T4i) with air compressor + from C6402811		



**100 ENGINE SUSPENSION 1)**

Pos.	Part No.	Description	Dimension	Quantity	Conditions
1	<b>00 0211 186 0</b>	HEXAGON HEAD BOLT	M20X130	2	
1	<b>00 0212 191 0</b>	CONTACT WASHER	A20	4	
1	<b>00 0237 521 0</b>	HEX.NUT	M20	2	
2	<b>00 0796 231 0</b>	BUSHING	D42D20.5X62	2	
3	<b>00 0215 291 1</b>	WASHER	16 -16,2X24,6X3,5	4	
4	<b>00 0214 367 0</b>	SOCKET HEAD SCREW	M16X 40	4	
5	<b>00 0796 942 1</b>	ENGINE SUPPORT		1	
6	<b>00 0799 387 3</b>	ENGINE MOUNTING		1	
7	<b>00 0237 458 0</b>	HEXAGON HEAD BOLT	M12X20	4	
8	<b>00 0239 389 0</b>	CONTACT WASHER	A12	4	
9	<b>00 0237 461 0</b>	HEXAGON HEAD BOLT	M12X30	4	
10	<b>00 0239 389 0</b>	CONTACT WASHER	A12	4	
11	<b>00 0799 297 0</b>	SUPPORT	6X171,6X271,6	1	
12	<b>00 0215 631 0</b>	HEXAGON HEAD BOLT	3/4-10UNC-2AX4 1/2	4	
13	<b>00 0212 191 0</b>	CONTACT WASHER	A20	4	
14	<b>00 0796 231 0</b>	BUSHING	D42D20.5X62	4	
15	<b>00 0239 389 0</b>	CONTACT WASHER	A12	1	
16	<b>00 0211 465 0</b>	HEX.HEAD BOLT	1/2-13UNC-2AX1 1/2	1	
17	<b>00 0236 230 0</b>	HEXAGON HEAD BOLT	M16X35	6	
17	<b>00 0239 415 0</b>	HEXAGON HEAD BOLT	M16X85	2	
18	<b>00 0239 391 0</b>	CONTACT WASHER	A16	8	
19	<b>00 0796 273 0</b>	BUSHING	D32/D18X50	2	

**1) Equipment**MD\_P02\_0658  
MD\_P02\_0659C9 R120 232/251 kW T3  
C9K R120 232/251 kW T3



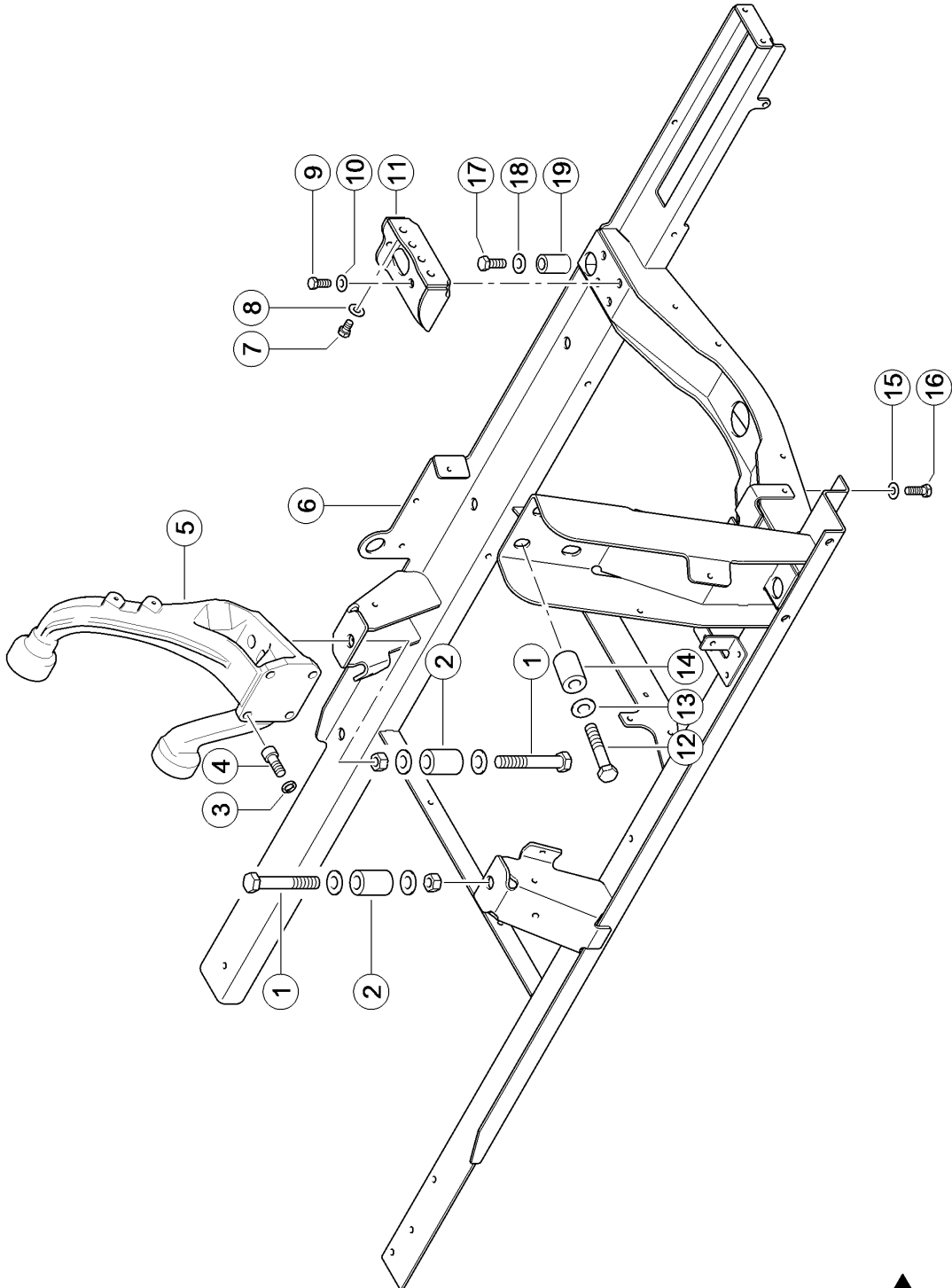
**100 ENGINE SUSPENSION 1)**

Pos.	Part No.	Description	Dimension	Quantity	Conditions
1	<b>00 0211 573 0</b>	HEXAGON HEAD BOLT	M18-100	2	
1	<b>00 0212 191 0</b>	CONTACT WASHER	A20	4	
1	<b>00 0242 848 0</b>	HEXAGONAL NUT	M18	2	
2	<b>00 0796 231 0</b>	BUSHING	D42D20.5X62	2	
3	<b>00 0799 383 3</b>	ENGINE MOUNTING		1	
4	<b>00 0237 458 0</b>	HEXAGON HEAD BOLT	M12X20	4	
5	<b>00 0239 389 0</b>	CONTACT WASHER	A12	4	
6	<b>00 0237 461 0</b>	HEXAGON HEAD BOLT	M12X30	4	
7	<b>00 0239 389 0</b>	CONTACT WASHER	A12	4	
8	<b>00 0799 297 0</b>	SUPPORT	6X171,6X271,6	1	
9	<b>00 0215 631 0</b>	HEXAGON HEAD BOLT	3/4-10UNC-2AX4 1/2	4	
10	<b>00 0212 191 0</b>	CONTACT WASHER	A20	4	
11	<b>00 0796 231 0</b>	BUSHING	D42D20.5X62	4	
12	<b>00 0239 389 0</b>	CONTACT WASHER	A12	1	
13	<b>00 0211 465 0</b>	HEX.HEAD BOLT	1/2-13UNC-2AX1 1/2	1	
14	<b>00 0236 230 0</b>	HEXAGON HEAD BOLT	M16X35	6	
14	<b>00 0239 415 0</b>	HEXAGON HEAD BOLT	M16X85	2	
15	<b>00 0239 391 0</b>	CONTACT WASHER	A16	8	
16	<b>00 0796 273 0</b>	BUSHING	D32/D18X50	2	

**1) Equipment**

MD\_P02\_0264  
MD\_P02\_0265

C13 R120 287/308 kW T3  
C13K R120 287/308 kW T3



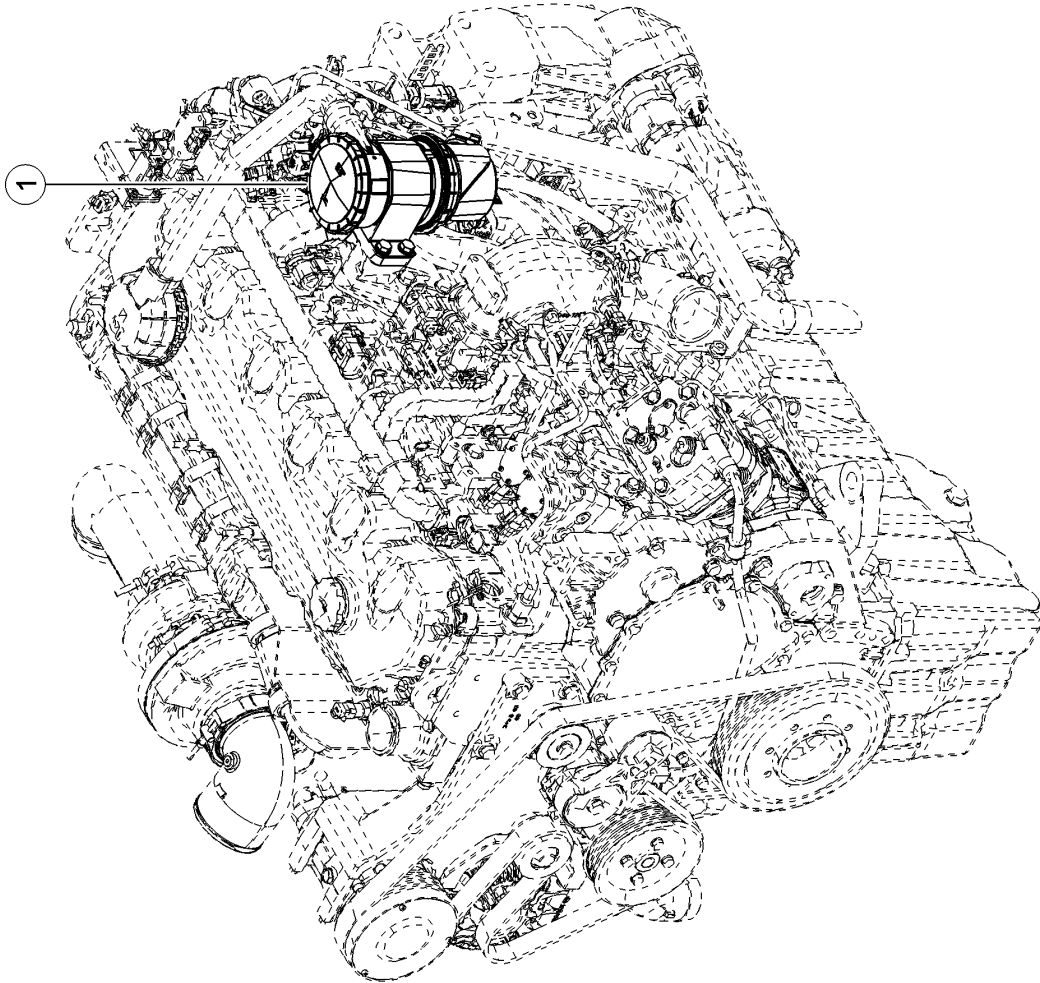
**100 ENGINE SUSPENSION 1)**

Pos.	Part No.	Description	Dimension	Quantity	Conditions
1	<b>00 0211 186 0</b>	HEXAGON HEAD BOLT	M20X130	2	
1	<b>00 0212 191 0</b>	CONTACT WASHER	A20	4	
1	<b>00 0237 521 0</b>	HEX.NUT	M20	2	
2	<b>00 0796 231 0</b>	BUSHING	D42D20.5X62	2	
3	<b>00 0215 291 1</b>	WASHER	16 -16,2X24,6X3,5	4	
4	<b>00 0214 367 0</b>	SOCKET HEAD SCREW	M16X 40	4	
5	<b>00 0799 998 0</b>	ENGINE SUPPORT	C9.3	1	
6	<b>00 0799 387 3</b>	ENGINE MOUNTING		1	
7	<b>00 0237 458 0</b>	HEXAGON HEAD BOLT	M12X20	4	
8	<b>00 0239 389 0</b>	CONTACT WASHER	A12	4	
9	<b>00 0237 461 0</b>	HEXAGON HEAD BOLT	M12X30	4	
10	<b>00 0239 389 0</b>	CONTACT WASHER	A12	4	
11	<b>00 0799 297 0</b>	SUPPORT	6X171,6X271,6	1	
12	<b>00 0215 631 0</b>	HEXAGON HEAD BOLT	3/4-10UNC-2AX4 1/2	4	
13	<b>00 0212 191 0</b>	CONTACT WASHER	A20	4	
14	<b>00 0796 231 0</b>	BUSHING	D42D20.5X62	4	
15	<b>00 0239 389 0</b>	CONTACT WASHER	A12	1	
16	<b>00 0211 465 0</b>	HEX.HEAD BOLT	1/2-13UNC-2AX1 1/2	1	
17	<b>00 0236 230 0</b>	HEXAGON HEAD BOLT	M16X35	6	
17	<b>00 0239 415 0</b>	HEXAGON HEAD BOLT	M16X85	2	
18	<b>00 0239 391 0</b>	CONTACT WASHER	A16	8	
19	<b>00 0796 273 0</b>	BUSHING	D32/D18X50	2	

**1) Equipment**

MD_P02_0270	Caterpillar C9.3 - 330 kW/449 hp (T4i)
MD_P02_0271	Caterpillar C9.3 - 330 kW/449 hp (T4i) with air compressor
MD_P02_0662	Caterpillar C9.3 - 264 kW/359 hp (T4i)
MD_P02_0663	Caterpillar C9.3 - 264 kW/359 hp (T4i) with air compressor
MD_P02_0664	Caterpillar C9.3 - 294 kW/400 hp (T4i)
MD_P02_0665	Caterpillar C9.3 - 294 kW/400 hp (T4i) with air compressor





**200 CRANK CASE BREATHER**

Pos.	Part No.	Description	Dimension	Quantity	Conditions
1	<b>00 0781 992 0</b>	FILTER		1	1)
1	<b>00 2599 997 0</b>	FILTER		1	2)

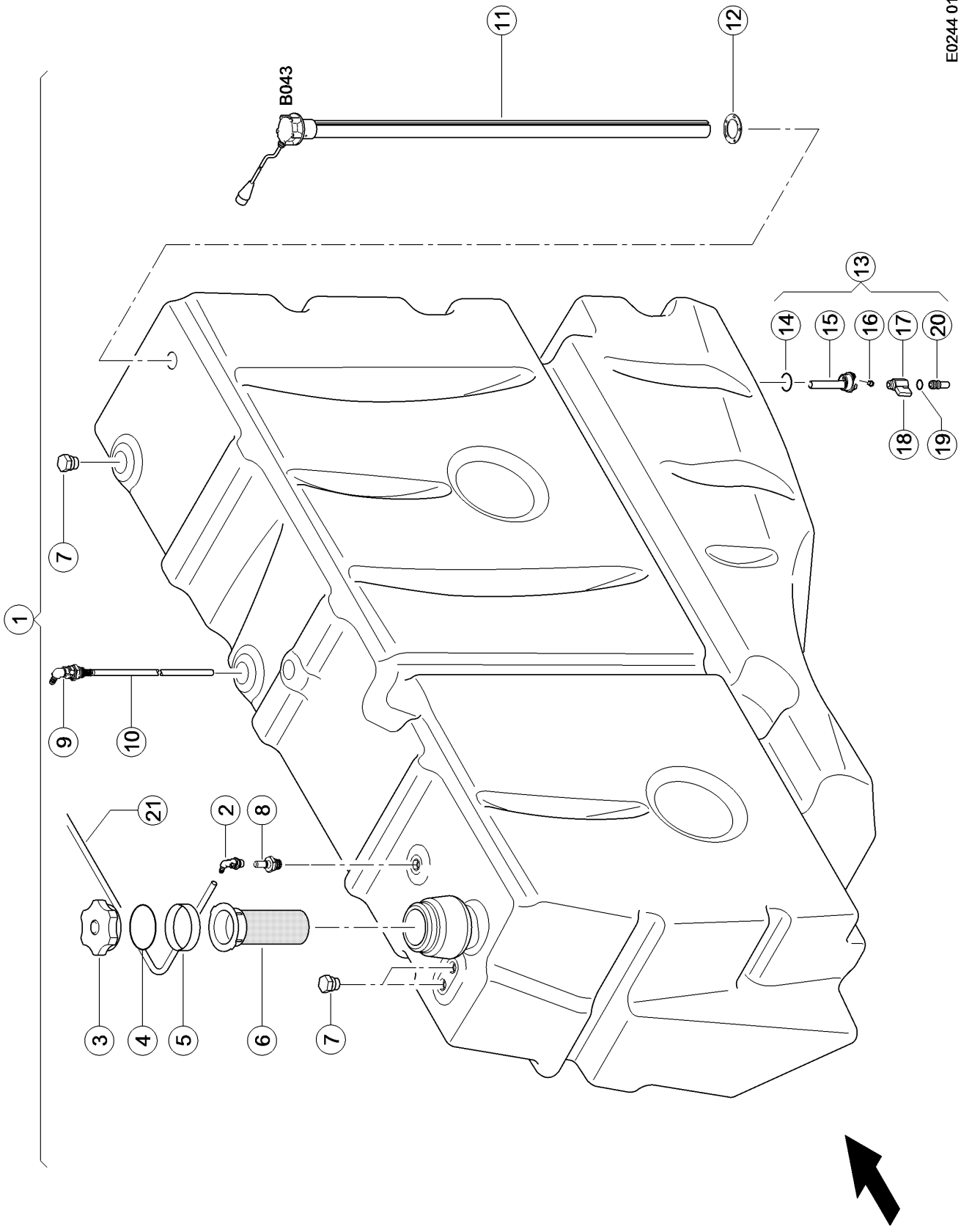
**1) Equipment**

MD_P02_0264	C13 R120 287/308 kW T3
MD_P02_0265	C13K R120 287/308 kW T3

**2) Equipment**

MD_P02_0270	Caterpillar C9.3 - 330 kW/449 hp (T4i)
MD_P02_0271	Caterpillar C9.3 - 330 kW/449 hp (T4i) with air compressor
MD_P02_0662	Caterpillar C9.3 - 264 kW/359 hp (T4i)
MD_P02_0663	Caterpillar C9.3 - 264 kW/359 hp (T4i) with air compressor
MD_P02_0664	Caterpillar C9.3 - 294 kW/400 hp (T4i)
MD_P02_0665	Caterpillar C9.3 - 294 kW/400 hp (T4i) with air compressor

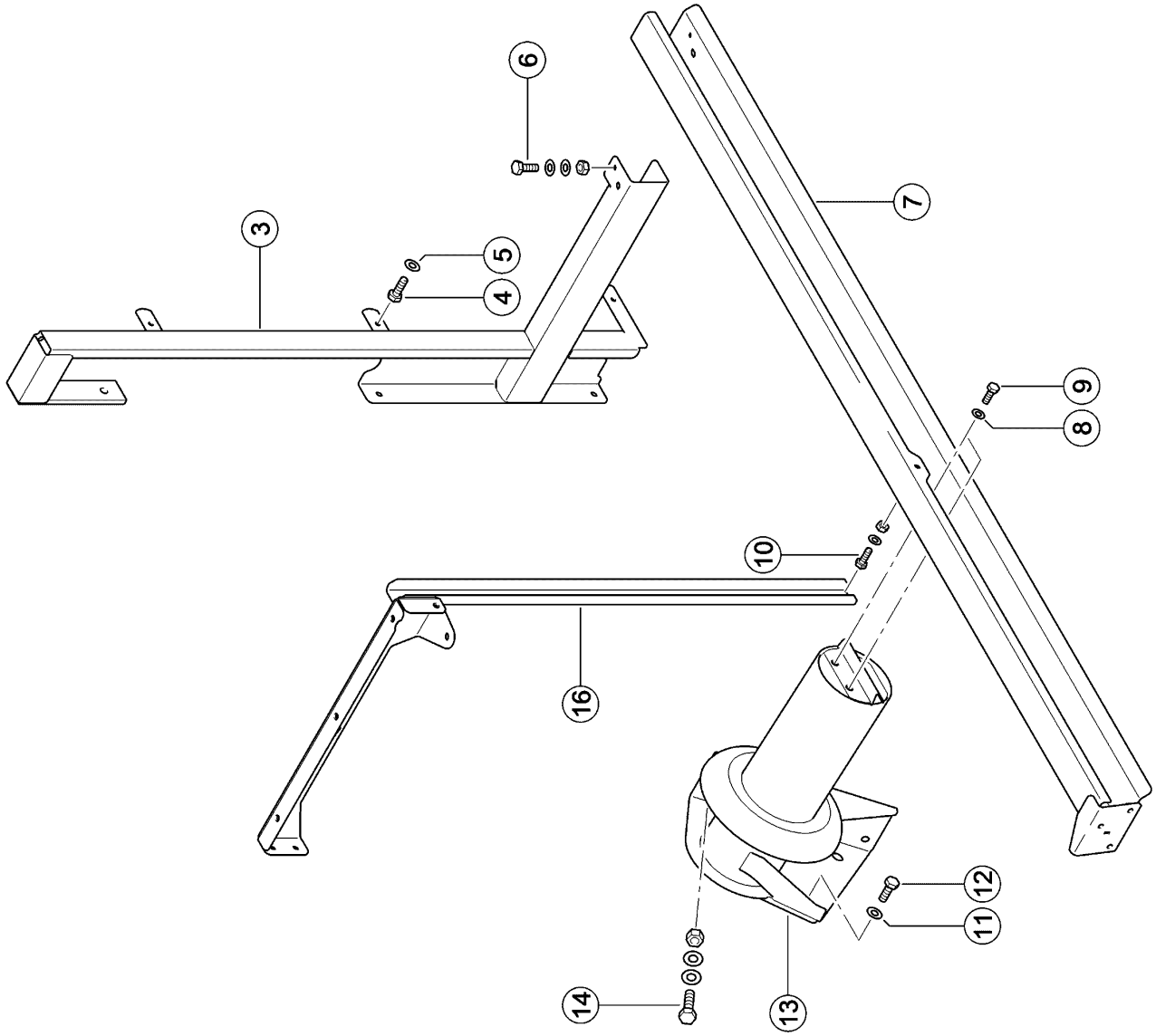
E0244 0125A100A 1



**100 FUEL TANK**

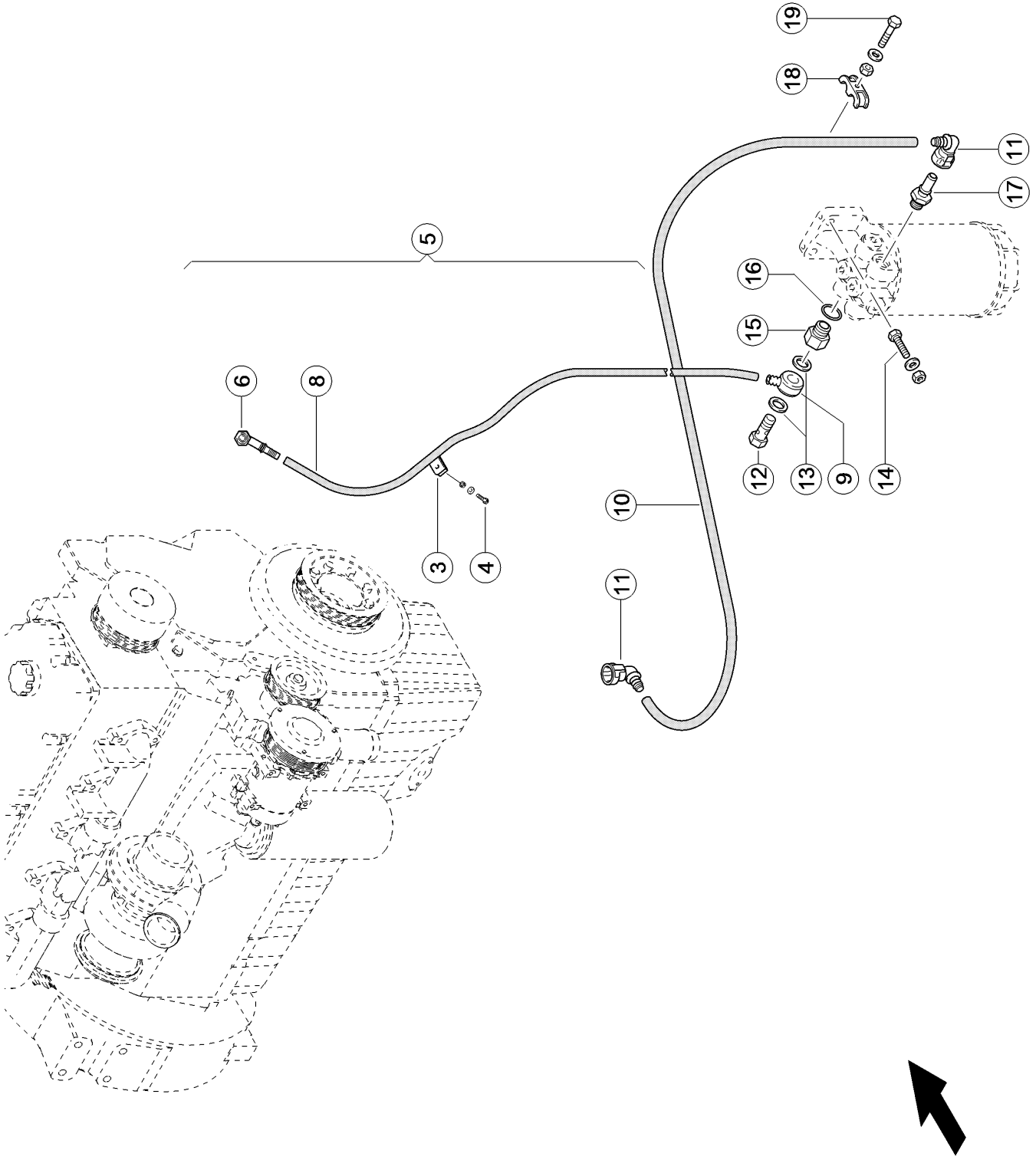
Pos.	Part No.	Description	Dimension	Quantity	Conditions
1	<b>00 0506 711 3</b>	FUEL TANK		1	1)
2	<b>00 0217 501 0</b>	CONNECTOR	NQS 1/2" - 6 X 90	1	
3	<b>00 0217 508 0</b>	CAP	GRAD DV 80 GL OHNE LÜFTUNG	1	
3	<b>00 0177 621 0</b>	CAP	D80 BELUEFTET, ABSCHLIES	1	2)
4	<b>00 0211 701 0</b>	O-RING	91,67X3,53-N	1	
5	<b>00 0038 915 0</b>	SOCKET	SV 80 B/40	1	
6	<b>00 0736 238 0</b>	TANK FILTER		1	
7	<b>00 0783 648 2</b>	BLIND PLUG		3	3)
7	<b>00 0217 460 0</b>	O-RING	18,64X3,53 -N	3	
8	<b>00 0794 417 2</b>	VENTILATION		1	
9	<b>00 0783 649 1</b>	ADAPTER		1	
9	<b>00 0217 460 0</b>	O-RING	18,64X3,53 -N	1	
10	<b>00 0202 240 0</b>	HOSE	A 6X10	1	4)
10	<b>00 0217 507 0</b>	PIPE BRACKET	NW 7,5	4	
11	<b>00 0016 596 3</b>	LEVEL INDICATOR	L=1320MM	1	5)
11	<b>00 0783 653 0</b>	PT SCREW	6ST 4X40	1	
12	<b>00 0794 993 0</b>	GASKET	VORRATSGEBER	1	
13	<b>00 0794 414 1</b>	CONNECTION	MIT W.ABLAS ; KUGELH. ;	1	6)
14	<b>00 0217 459 1</b>	O-RING	27X4,0 -N	1	
15	<b>00 0783 643 1</b>	PLUG	WASSER + G3/8"	1	
16	<b>00 0687 625 1</b>	HEXAGON HEAD BOLT	M8X17 F. TANK WASSERABLA	1	
17	<b>00 0783 652 0</b>	BALL-TYPE TAP	DN8-I-G3/8XA-G3/8	1	
18	<b>00 0783 658 0</b>	ANTI-ROTAT. LOCK	FUER 3/8" KUGELHAHN	1	
19	<b>00 0216 366 0</b>	O-RING	10,50X1,5 NBR80	1	
20	<b>00 0783 644 1</b>	ADAPTOR	G3/8" - 1/2" SAE J 2044	1	
21	<b>00 0136 559 0</b>	TUBE	12,5X1,25X10000	1	7)

<b>1) Remarks</b>	with Item 3 - 12
<b>2) Remarks</b>	LOCKING
<b>3) Remarks</b>	with O-Ring 217 460.0
<b>4) Remarks</b>	2800 long
<b>5) CCN</b>	CCN-B043 fuel level sensor without 783 653.0
<b>6) Remarks</b>	with item 14 - 20
<b>7) Remarks</b>	1290 long



**100 FUEL TANK**

<b>Pos.</b>	<b>Part No.</b>	<b>Description</b>	<b>Dimension</b>	<b>Quantity</b>	<b>Conditions</b>
3	<b>00 0794 858 4</b>	SUPPORT	1700	1	
4	<b>00 0237 453 0</b>	HEXAGON HEAD BOLT	M10X30	3	
5	<b>00 0239 388 0</b>	CONTACT WASHER	A10-10,2X22,25X1,6	3	
6	<b>00 0237 453 0</b>	HEXAGON HEAD BOLT	M10X30	1	
6	<b>00 0239 388 0</b>	CONTACT WASHER	A10-10,2X22,25X1,6	2	
6	<b>00 0236 171 0</b>	HEXAGONAL NUT	M10	1	
7	<b>00 0794 855 3</b>	SUPPORT		1	
8	<b>00 0239 387 0</b>	CONTACT WASHER	A8-8,2X18X1,4	2	
9	<b>00 0237 439 0</b>	HEXAGON HEAD BOLT	M8X16	2	
10	<b>00 0237 439 0</b>	HEXAGON HEAD BOLT	M8X16	3	
10	<b>00 0239 387 0</b>	CONTACT WASHER	A8-8,2X18X1,4	4	
10	<b>00 0236 170 0</b>	HEXAGONAL NUT	M8	1	
11	<b>00 0239 388 0</b>	CONTACT WASHER	A10-10,2X22,25X1,6	2	
12	<b>00 0237 453 0</b>	HEXAGON HEAD BOLT	M10X30	2	
13	<b>00 0794 854 1</b>	MAIN FRAME	1700	1	
14	<b>00 0237 461 0</b>	HEXAGON HEAD BOLT	M12X30	4	
14	<b>00 0239 389 0</b>	CONTACT WASHER	A12	8	
14	<b>00 0236 172 0</b>	HEXAGONAL NUT	M12	4	
16	<b>00 0794 857 1</b>	SUPPORT	1700	1	



Thank you so much for reading.  
Please click the “Buy Now!”  
button below to download the  
complete manual.



After you pay.

You can download the most  
perfect and complete manual in  
the world immediately.

Our support email:

[ebooklibonline@outlook.com](mailto:ebooklibonline@outlook.com)