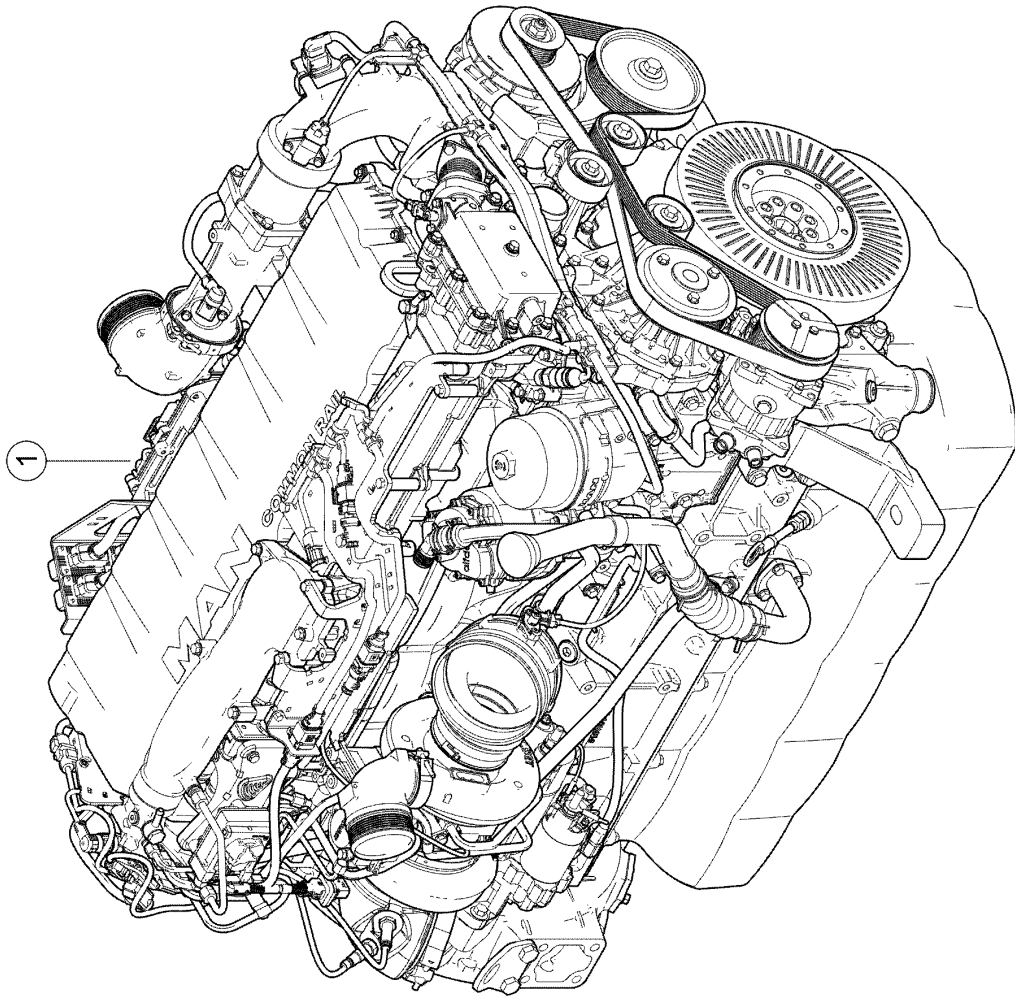


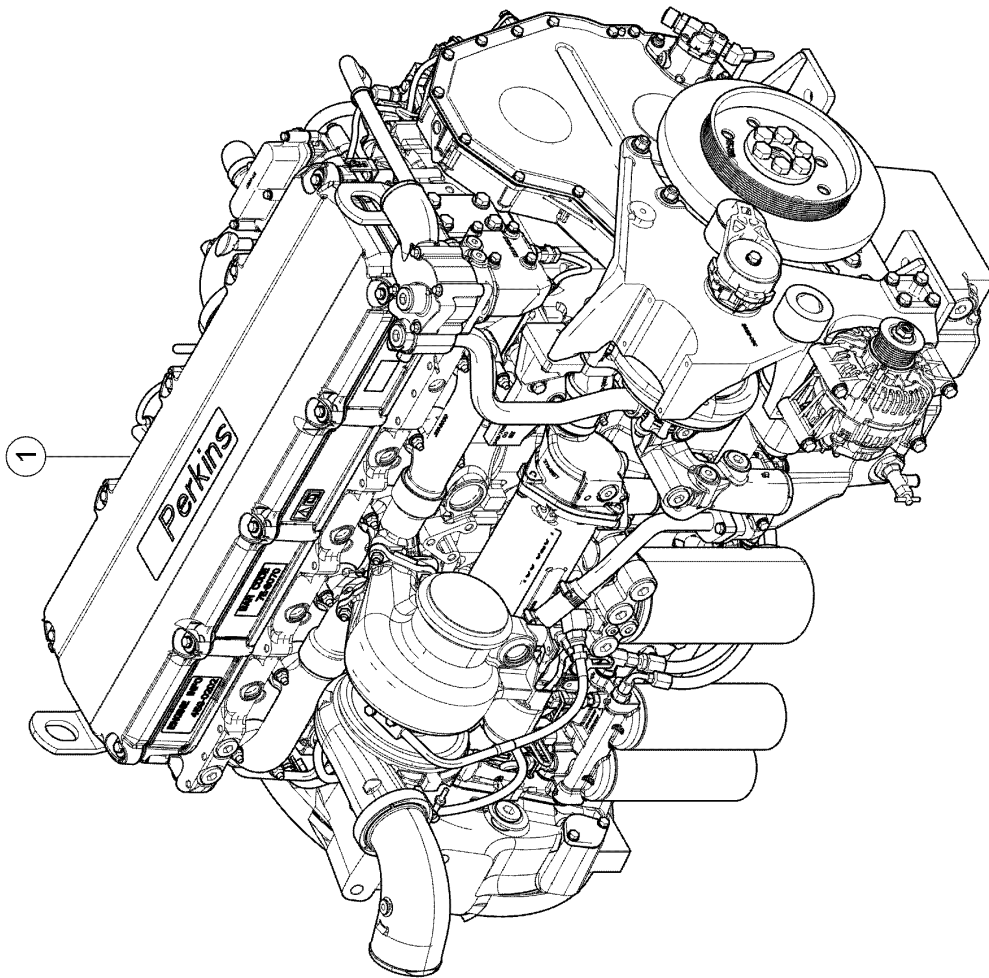
010 COMPLETE ENGINE 1)

Pos.	Part No.	Description	Dimension	Quantity	Conditions
1	00 2598 511 1	ENGINE	OM470 300KW E5 LEXION	1	2)
1	00 2598 512 1	ENGINE	OM470 K 300KW E5 K LEXIO	1	3)
1	00 2598 513 1	ENGINE	OM470 340KW E5 LEXION	1	4)
1	00 2598 514 1	ENGINE	OM470 K 340KW E5 LEXION	1	5)
1)	Equipment	MD_P02_0910 MD_P02_0911 MD_P02_0915 MD_P02_0916	Mercedes-Benz OM470 LA - 300 kW/408 hp (Stage V) Mercedes-Benz OM470 LA - 300 kW/408 hp (Stage V), air compressor Mercedes-Benz OM470 LA - 340 kW/462 hp (Stage V) Mercedes-Benz OM470 LA - 340 kW/462 hp (Stage V), air compressor		
2)	Equipment	MD_P02_0910	Mercedes-Benz OM470 LA - 300 kW/408 hp (Stage V)		
3)	Equipment	MD_P02_0911	Mercedes-Benz OM470 LA - 300 kW/408 hp (Stage V), air compressor		
4)	Equipment	MD_P02_0915	Mercedes-Benz OM470 LA - 340 kW/462 hp (Stage V)		
5)	Equipment	MD_P02_0916	Mercedes-Benz OM470 LA - 340 kW/462 hp (Stage V), air compressor		



010 COMPLETE ENGINE 1)

Pos.	Part No.	Description	Dimension	Quantity	Conditions
1	00 2598 631 0	ENGINE	D2676 E5 373KW ROTOR	1	2)
1	00 2598 634 0	ENGINE	D2676 E5 373KW ROTOR	1	3)
1	00 2598 635 0	ENGINE	D2676 E5 404KW ROTOR	1	4)
1	00 2598 638 0	ENGINE	D2676 E5 404KW ROTOR	1	5)
1) Equipment					
		MD_P02_0930	MAN D2676 - 373 kW/507 hp (Stage V)		
		MD_P02_0931	MAN D2676 - 373 kW/507 hp (Stage V), air compressor		
		MD_P02_0935	MAN D2676 - 404 kW/549 hp (Stage V)		
		MD_P02_0936	MAN D2676 - 404 kW/549 hp (Stage V), air compressor		
2) Equipment					
		MD_P02_0930	MAN D2676 - 373 kW/507 hp (Stage V)		
3) Equipment					
		MD_P02_0931	MAN D2676 - 373 kW/507 hp (Stage V), air compressor		
4) Equipment					
		MD_P02_0935	MAN D2676 - 404 kW/549 hp (Stage V)		
5) Equipment					
		MD_P02_0936	MAN D2676 - 404 kW/549 hp (Stage V), air compressor		



010 COMPLETE ENGINE 1)

Pos.	Part No.	Description	Dimension	Quantity	Conditions
1	00 2643 130 0	ENGINE	2206D 339KW	1	2)
1	00 2643 131 0	ENGINE	2206D 339KW	1	3)
1	00 2643 127 0	ENGINE	2206D 385KW	1	4)
1	00 2643 128 0	ENGINE	2206D 385KW	1	5)

1) Equipment

MD_P02_0852	Perkins 2206D ECE R120 339KW T3
MD_P02_0853	Perkins 2206D K ECE R120 339KW T3 with air compressor
MD_P02_0854	Perkins 2206D ECE R120 385KW T3
MD_P02_0855	Perkins 2206D K ECE R120 385KW T3 with air compressor

2) Equipment

MD_P02_0852	Perkins 2206D ECE R120 339KW T3
-------------	---------------------------------

3) Equipment

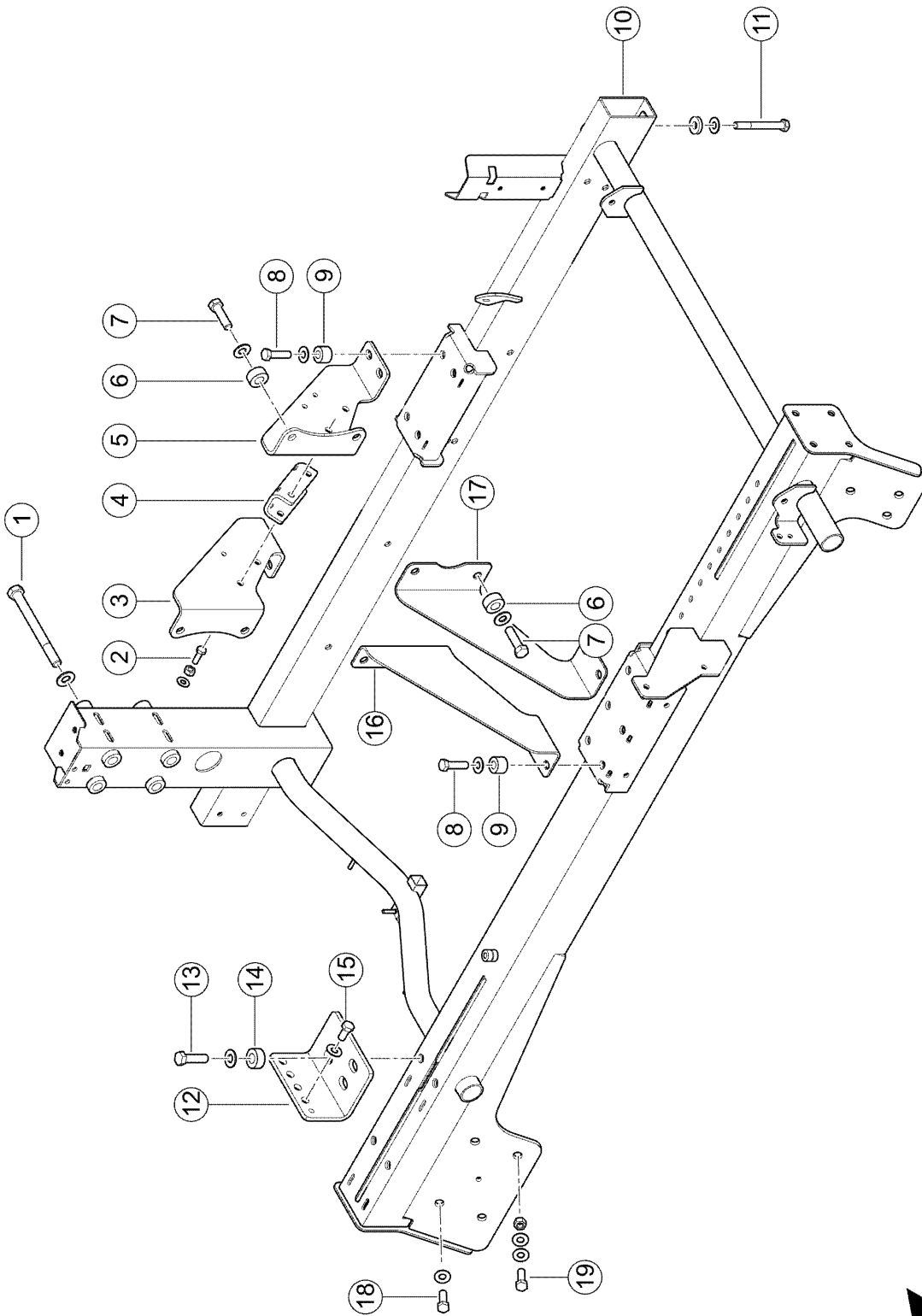
MD_P02_0853	Perkins 2206D K ECE R120 339KW T3 with air compressor
-------------	---

4) Equipment

MD_P02_0854	Perkins 2206D ECE R120 385KW T3
-------------	---------------------------------

5) Equipment

MD_P02_0855	Perkins 2206D K ECE R120 385KW T3 with air compressor
-------------	---

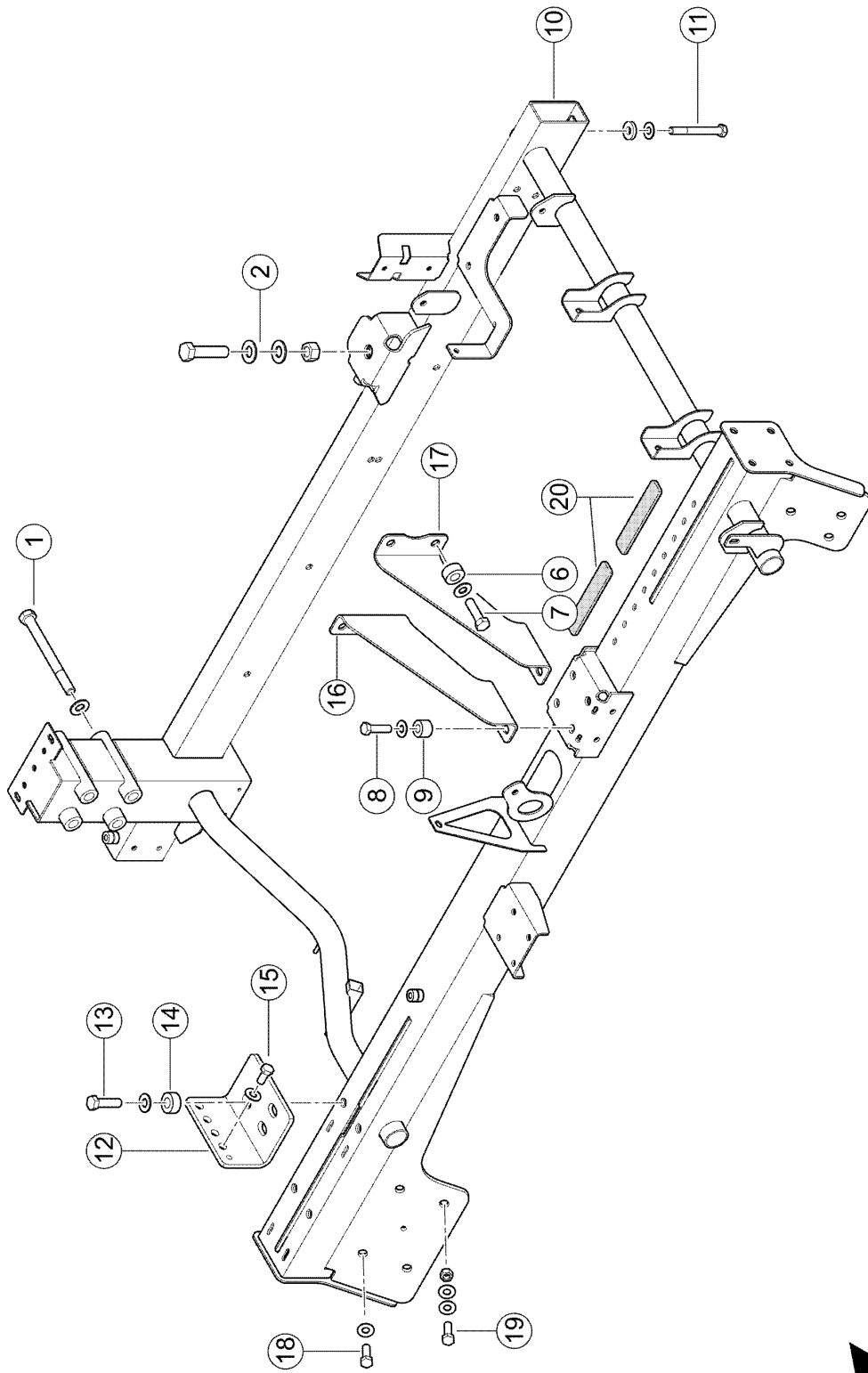


100 ENGINE SUSPENSION 1)

Pos.	Part No.	Description	Dimension	Quantity	Conditions
1	00 0665 457 1	HEX.HEAD BOLT	M16X1,5X170	4	
1	00 0239 391 0	CONTACT WASHER	A16	4	
2	00 0237 453 0	HEXAGON HEAD BOLT	M10X30	4	
2	00 0239 388 0	CONTACT WASHER	A10-10,2X22,25X1,6	4	
2	00 0236 171 0	HEXAGONAL NUT	M10	4	
3	00 2675 893 0	SUPPORT	6X278,6X339,3	1	
4	00 2675 895 0	CONNECTION	6X105,6X120	1	
5	00 2675 894 0	SUPPORT	6X344,3X277,6	1	
6	00 2630 278 0	BUSHING	D34XD16,5X16	8	
7	00 1602 199 0	HEXAGON HEAD BOLT	M14X1,5X50	8	
7	00 0239 390 0	CONTACT WASHER	A14	8	
8	00 0235 553 0	HEXAGON HEAD BOLT	M12X45	8	
8	00 0239 389 0	CONTACT WASHER	A12	8	
9	00 2678 073 0	BUSHING	D28XD13X20	8	
10	00 2626 977 8	ENGINE MOUNTING	OM470LA 1420	1	
11	00 0235 563 0	HEXAGON HEAD BOLT	M12X100	9	
11	00 0239 389 0	CONTACT WASHER	A12	9	
11	00 0233 103 0	WASHER	13-13X30X6	9	
12	00 2658 317 1	SUPPORT	8X150X181,1	1	
13	00 0237 373 0	HEXAGON HEAD BOLT	M14X40	4	
13	00 0239 390 0	CONTACT WASHER	A14	4	
14	00 0238 990 0	WASHER	Ø16,5 X Ø33,5 - 1X5	4	
15	00 0236 056 0	HEXAGON HEAD BOLT	M12X25	4	
15	00 0239 389 0	CONTACT WASHER	A12	4	
16	00 2659 935 1	SUPPORT	4X343,9X311,9	1	
17	00 2659 932 1	SUPPORT	4X343,9X322	1	
18	00 0237 572 0	HEXAGON HEAD BOLT	M12X35	3	
18	00 0239 389 0	CONTACT WASHER	A12	3	
19	00 0237 572 0	HEXAGON HEAD BOLT	M12X35	4	
19	00 0239 389 0	CONTACT WASHER	A12	8	
19	00 0236 172 0	HEXAGONAL NUT	M12	4	

1) Equipment

MD_P02_0910	Mercedes-Benz OM470 LA - 300 kW/408 hp (Stage V)
MD_P02_0911	Mercedes-Benz OM470 LA - 300 kW/408 hp (Stage V), air compressor
MD_P02_0915	Mercedes-Benz OM470 LA - 340 kW/462 hp (Stage V)
MD_P02_0916	Mercedes-Benz OM470 LA - 340 kW/462 hp (Stage V), air compressor



100 ENGINE SUSPENSION 1)

Pos.	Part No.	Description	Dimension	Quantity	Conditions
1	77 0004 929 7	HEXAGON HEAD BOLT	M16X160	4	
1	00 0239 391 0	CONTACT WASHER	A16	4	
2	00 0233 094 0	HEXAGON HEAD BOLT	M20X80	1	
2	00 0212 191 0	CONTACT WASHER	A20	2	
2	00 0237 521 0	HEX.NUT	M20	1	
6	00 2652 547 0	BUSHING		4	
7	00 0217 067 0	HEXAGON HEAD BOLT	M14X50	4	
7	00 0239 390 0	CONTACT WASHER	A14	4	
8	00 0235 553 0	HEXAGON HEAD BOLT	M12X45	4	
8	00 0239 389 0	CONTACT WASHER	A12	4	
9	00 2678 073 0	BUSHING	D28XD13X20	4	
10	00 2626 205 3	ENGINE MOUNTING	D2676 1420	1	2)
10	00 2742 782 0	ENGINE MOUNTING	D2676 1420	1	3)
10	00 2782 833 0	ENGINE MOUNTING	D2676 1420	1	4)
11	00 0235 563 0	HEXAGON HEAD BOLT	M12X100	9	
11	00 0239 389 0	CONTACT WASHER	A12	9	
11	00 0233 103 0	WASHER	13-13X30X6	9	
12	00 2658 317 1	SUPPORT	8X150X181,1	1	
13	00 0237 373 0	HEXAGON HEAD BOLT	M14X40	4	
13	00 0239 390 0	CONTACT WASHER	A14	4	
14	00 0238 990 0	WASHER	Ø16,5 X Ø33,5 - 1X5	4	
15	00 0236 056 0	HEXAGON HEAD BOLT	M12X25	4	
15	00 0239 389 0	CONTACT WASHER	A12	4	
16	00 2658 339 1	SUPPORT	4X272,9X301,4	1	
17	00 2652 358 1	SUPPORT	4X272,9X301,4	1	
18	00 0237 572 0	HEXAGON HEAD BOLT	M12X35	3	
18	00 0239 389 0	CONTACT WASHER	A12	3	
19	00 0237 572 0	HEXAGON HEAD BOLT	M12X35	4	
19	00 0239 389 0	CONTACT WASHER	A12	8	
19	00 0236 172 0	HEXAGONAL NUT	M12	4	
20	00 2599 780 0	RUBBER PAD	150X30X6(15)	2	

1) Equipment

MD_P02_0930	MAN D2676 - 373 kW/507 hp (Stage V)
MD_P02_0931	MAN D2676 - 373 kW/507 hp (Stage V), air compressor
MD_P02_0935	MAN D2676 - 404 kW/549 hp (Stage V)
MD_P02_0936	MAN D2676 - 404 kW/549 hp (Stage V), air compressor

2) machine no.

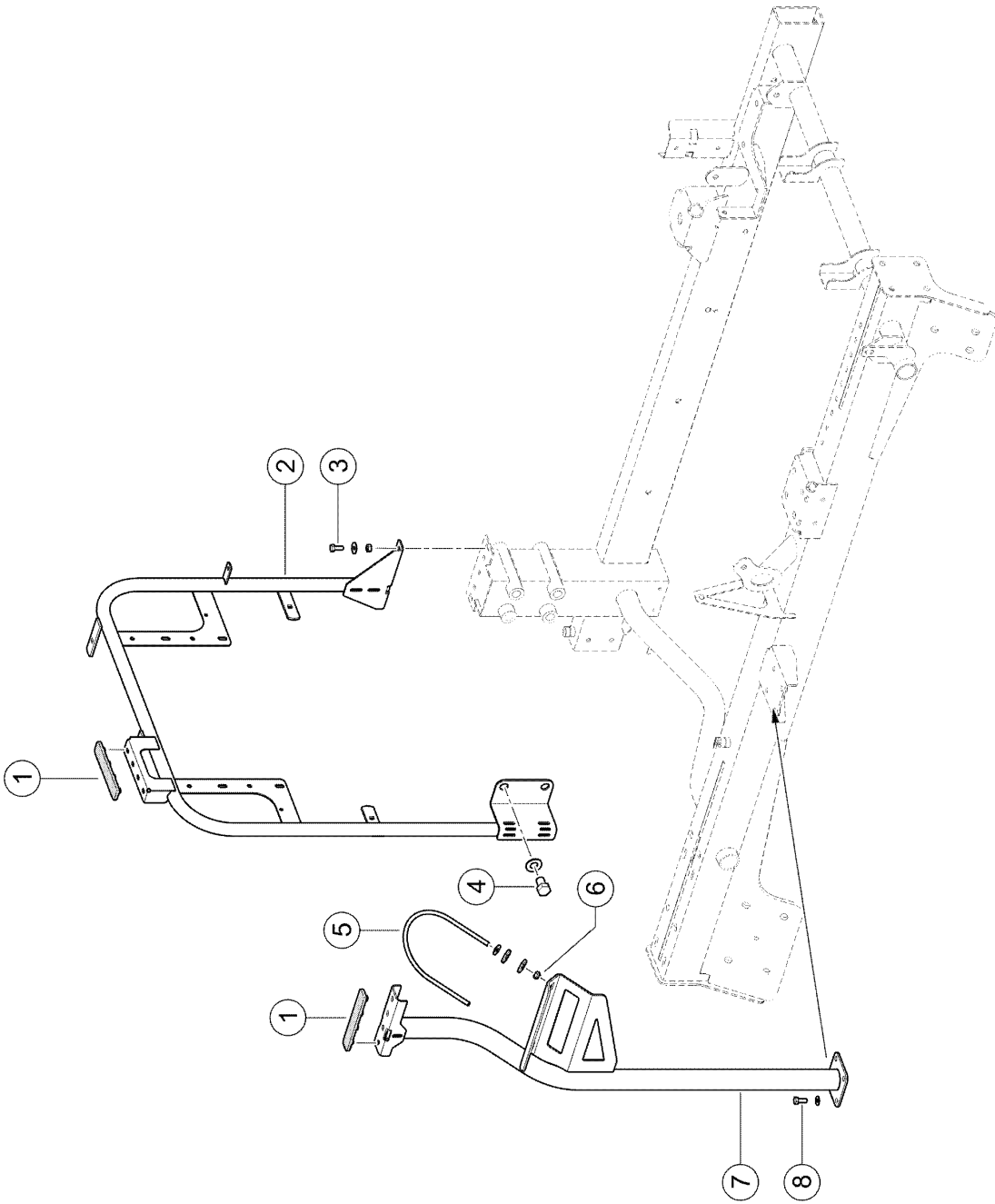
+ up to C8500056

3) machine no.

+ from C8500057 up to C8500382

4) machine no.

+ from C8500383



100 ENGINE SUSPENSION 1)

Pos.	Part No.	Description	Dimension	Quantity	Conditions
1	00 2599 780 0	RUBBER PAD	150X30X6(15)	2	
2	00 2626 290 2	FRAME		1	
3	00 0236 200 0	HEXAGON HEAD BOLT	M8X20	2	
3	00 0239 387 0	CONTACT WASHER	A8-8,2X18X1,4	2	
3	00 0236 170 0	HEXAGONAL NUT	M8	2	
4	00 0237 463 0	HEXAGON HEAD BOLT	M16X25	2	
4	00 0239 391 0	CONTACT WASHER	A16	2	
5	00 2402 009 0	CLAMP BRACKET	M8X154	1	2)
5	00 2907 454 0	CLAMPING BRACKET	M8X134	1	3)
6	00 0234 320 0	WASHER	8,4X23X3	4	2)
6	00 0239 393 1	CONTACT WASHER	B 8 -8.2X22X1,9	2	4)
6	00 0238 132 0	LOCK NUT	M8	2	4)
7	00 2653 636 2	SUPPORT	D2676	1	
8	00 0236 200 0	HEXAGON HEAD BOLT	M8X20	4	
8	00 0239 387 0	CONTACT WASHER	A8-8,2X18X1,4	4	

1) Equipment

MD_P02_0930	MAN D2676 - 373 kW/507 hp (Stage V)
MD_P02_0931	MAN D2676 - 373 kW/507 hp (Stage V), air compressor
MD_P02_0935	MAN D2676 - 404 kW/549 hp (Stage V)
MD_P02_0936	MAN D2676 - 404 kW/549 hp (Stage V), air compressor

2) machine no.

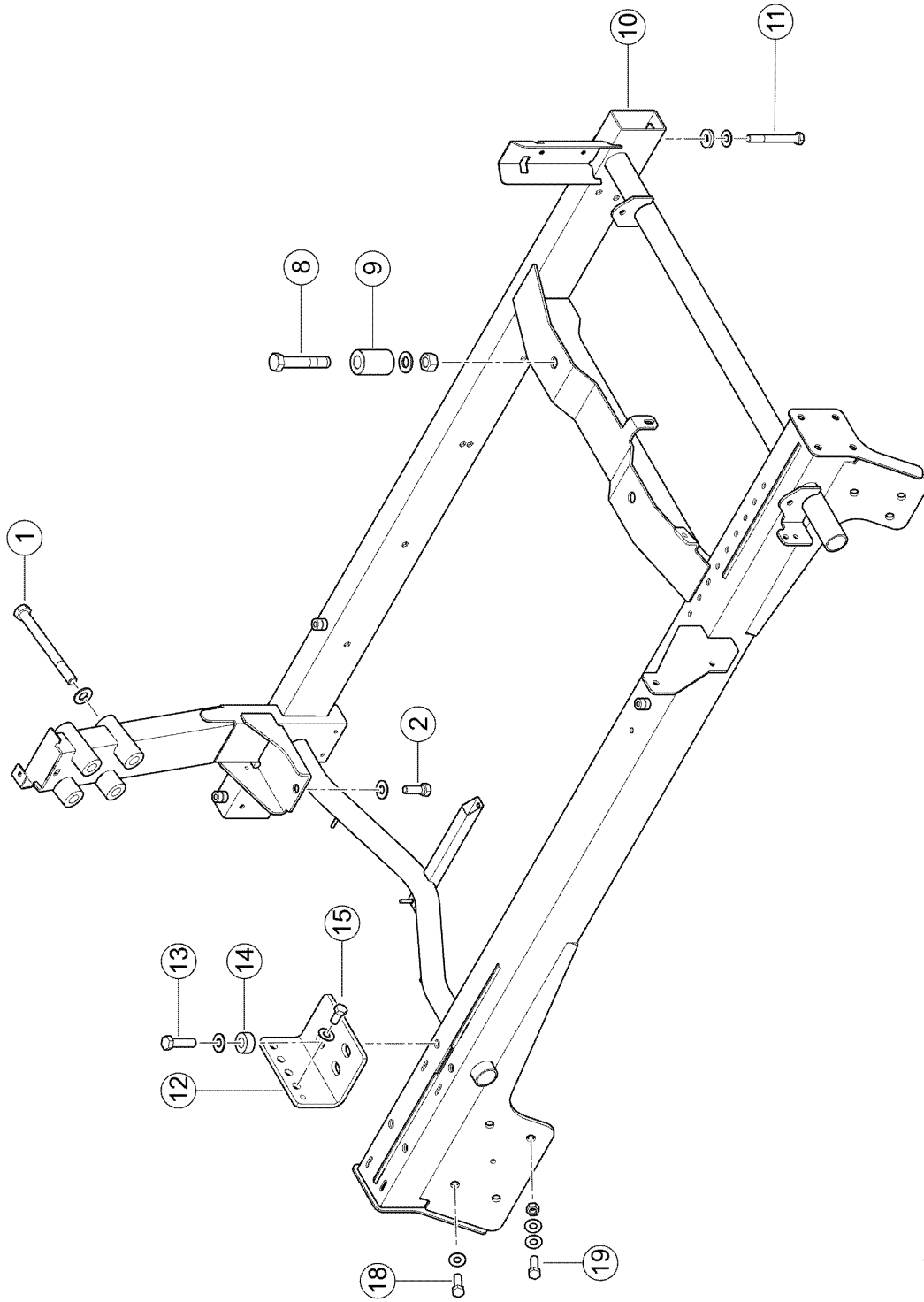
+ up to C8500453

3) machine no.

+ from C8500454

4) machine no.

+ from C8500011



100 ENGINE SUSPENSION 1)

Pos.	Part No.	Description	Dimension	Quantity	Conditions
1	00 0363 159 0	HEX.HEAD BOLT	3/4-10UNC-2AX5 1/2	4	
1	00 0212 191 0	CONTACT WASHER	A20	4	
2	00 0211 465 0	HEX.HEAD BOLT	1/2-13UNC-2AX1 1/2	1	2)
2	00 0239 390 0	CONTACT WASHER	A14	1	2)
2	00 1029 047 1	HEX.HEAD BOLT	M18X110	2	3)
8	77 0003 696 2	SCREW	M18X110	2	
8	00 1133 001 1	CONTACT WASHER	A18 -18,5X35X3	2	
8	00 0242 848 0	HEXAGONAL NUT	M18	2	
9	00 2697 193 1	BUSHING	D50XD20X58	2	3)
9	00 0796 231 0	BUSHING	D42D20.5X62	2	2)
10	00 2628 003 7	ENGINE MOUNTING	2206D 1420	1	
11	00 0235 563 0	HEXAGON HEAD BOLT	M12X100	9	
11	00 0239 389 0	CONTACT WASHER	A12	9	
11	00 0233 103 0	WASHER	13-13X30X6	9	
12	00 2658 317 1	SUPPORT	8X150X181,1	1	
13	00 0237 373 0	HEXAGON HEAD BOLT	M14X40	4	
13	00 0239 390 0	CONTACT WASHER	A14	4	
14	00 0238 990 0	WASHER	Ø16,5 X Ø33,5 - 1X5	4	
15	00 0236 056 0	HEXAGON HEAD BOLT	M12X25	4	
15	00 0239 389 0	CONTACT WASHER	A12	4	
18	00 0237 572 0	HEXAGON HEAD BOLT	M12X35	3	
18	00 0239 389 0	CONTACT WASHER	A12	3	
19	00 0237 572 0	HEXAGON HEAD BOLT	M12X35	4	
19	00 0239 389 0	CONTACT WASHER	A12	8	
19	00 0236 172 0	HEXAGONAL NUT	M12	4	

1) Equipment

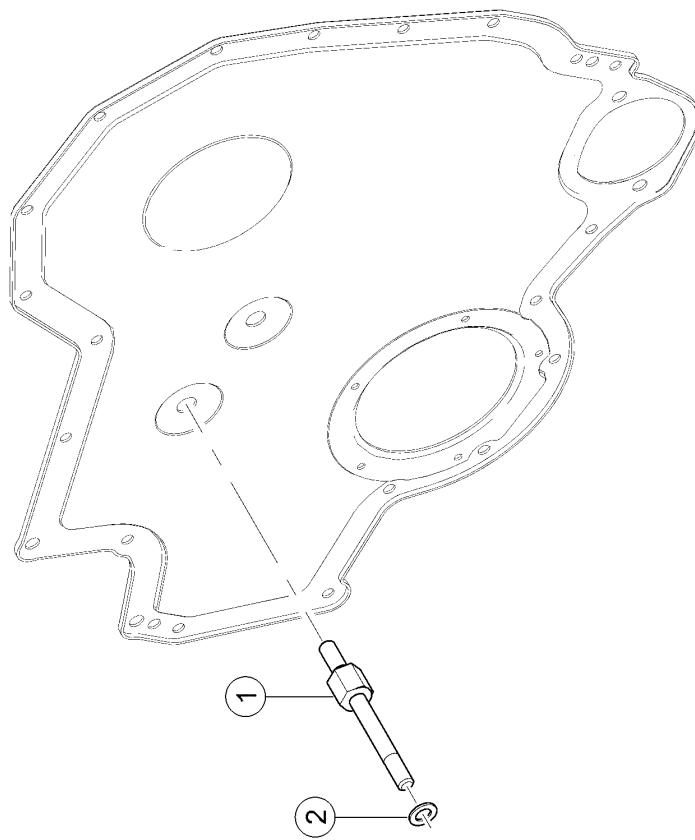
MD_P02_0852	Perkins 2206D ECE R120 339KW T3
MD_P02_0853	Perkins 2206D K ECE R120 339KW T3 with air compressor
MD_P02_0854	Perkins 2206D ECE R120 385KW T3
MD_P02_0855	Perkins 2206D K ECE R120 385KW T3 with air compressor

2) machine no.

+ up to C8500018

3) machine no.

+ from C8500019



Thank you so much for reading.
Please click the “Buy Now!”
button below to download the
complete manual.



After you pay.

You can download the most
perfect and complete manual in
the world immediately.

Our support email:

ebooklibonline@outlook.com