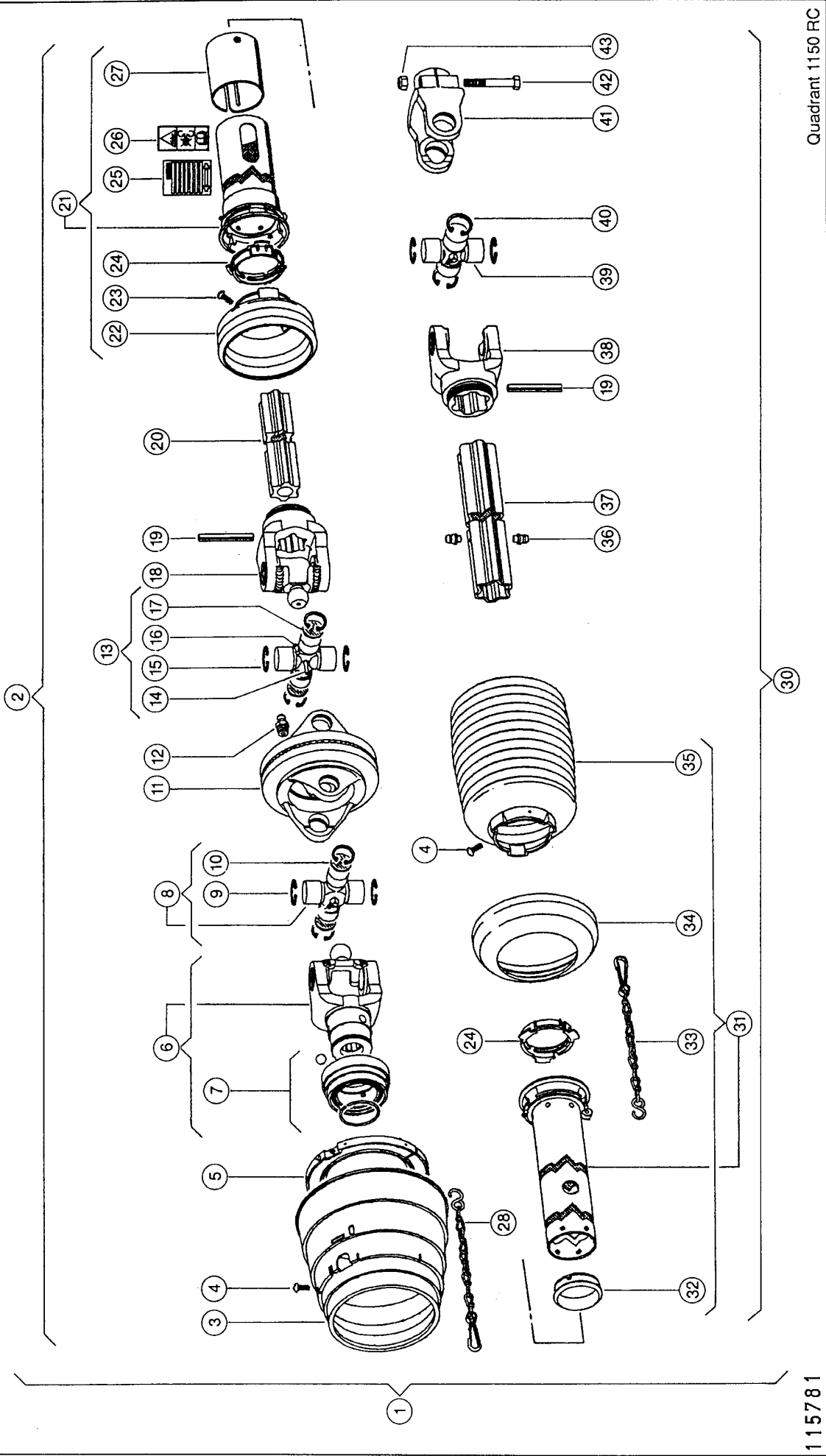


1

CLAAS



Quadrant 1150 RC

115781

UNIVERSAL DRIVE SHAFT 1)

Pos.	Part No.	Description	Dimension	Quantity	Conditions
1	00 0831 544 0	DRIVE SHAFT ASSY.		1	2)
1	00 0831 545 0	DRIVE SHAFT ASSY.		1	3)
2	00 0831 616 0	DRIVE SHAFT HALF		1	2)
2	00 0831 617 0	DRIVE SHAFT HALF		1	3)
3	00 0817 312 0	PROTECT.FUNNEL		1	
4	00 0242 793 0	CYCL. PLATE SCREW	C4,2X 9,5	8	
5	00 0817 313 0	GLIDE RING		1	
6	00 0831 744 0	FORK		1	2)
6	00 0831 743 0	FORK ASSY.		1	3)
7	00 0831 745 0	LOCK		1	
8	00 0817 316 0	CENTRE CROSS ASS.		1	4)
9	00 0244 613 0	CIRCLIP	36X1,5	4	
10	00 0817 317 0	WASHER		4	
11	00 0817 318 0	DOUBLE FORK		1	
12	00 0179 838 0	GREASE NIPPLE	A M8X1	2	
13	00 0817 782 0	CENTRE CROSS ASS.		1	5)
14	00 0817 783 0	GREASE NIPPLE		1	
15	00 0244 613 0	CIRCLIP	36X1,5	4	
16	00 0211 636 0	GREASE NIPPLE	B M8X1-67,5°	1	
17	00 0817 317 0	WASHER		4	
18	00 0817 784 0	FORK		1	
19	00 0213 688 1	SPRING PIN	10 X 90	2	
20	00 0812 913 0	PROFILE SHAFT		1	6)
21	00 0826 076 0	PROTECTIVE TUBE		1	7)
22	00 0821 103 0	PROTECT.FUNNEL		1	
23	00 0242 793 0	CYCL. PLATE SCREW	C4,2X 9,5	2	
24	00 0920 671 0	GLIDE RING		2	
25	00 0831 746 0	OPERATION	70 50 66	1	
26	00 0831 747 0	STICKER		1	
27	00 0817 787 0	COVERING		1	
28	00 0821 104 0	SUPPORTING CHAIN		1	
30	00 0826 075 0	DRIVE SHAFT HALF		1	
31	00 0826 077 0	PROTECTIVE TUBE		1	8)
32	00 0817 323 0	GLIDE RING		1	
33	00 0972 297 0	SUPPORTING CHAIN		1	
34	00 0917 285 0	BACK-UP RING		1	
35	00 0818 855 1	PROTECT.FUNNEL		1	
36	00 0817 786 0	GREASE NIPPLE		2	
37	00 0826 079 0	PROFILE TUBE		1	9)
38	00 0941 804 0	FORK		1	
39	00 0813 681 0	CENTRE CROSS ASS.		1	10)
40	00 0244 613 0	CIRCLIP	36X1,5	4	
41	00 0941 643 0	EXTENSION FORKE		1	
42	00 0235 593 0	HEXAGON HEAD BOLT	M16X90	1	
43	00 0238 047 0	LOCK NUT	M16	1	

1) Remarks

VAR. 9796
1 3/8", 6-TEILIGER ANSCHLUSS
VAR. 9797
1 3/8", 21-TEILIGER ANSCHLUSS

2) Remarks

1 3/8", 6 piece

3) Remarks

1 3/8", 21-TEILIG

4) Remarks

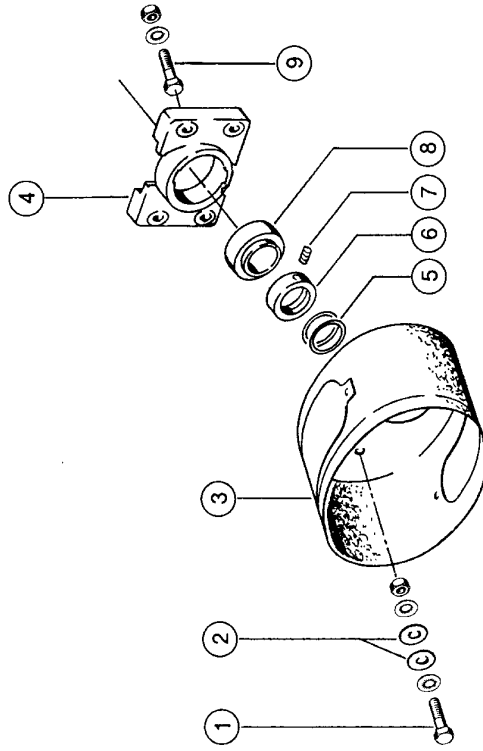
with Item 9, 10

UNIVERSAL DRIVE SHAFT 1)

5) Remarks	with Item 14 - 17
6) Remarks	600 long
7) Remarks	with Item 22 - 27
8) Remarks	with Item 32 - 35
9) Remarks	580 mm
10) Remarks	with Item 40

2

Quadrant 1150 RC



CLAAS

BEARING BRACKET FOR UNIVERSAL DRIVE SHAFTS

Pos.	Part No.	Description	Dimension	Quantity	Conditions
1	00 0235 556 0	HEXAGON HEAD BOLT	M12X60	2	
1	00 0238 234 0	LOCK NUT	M12	2	
1	00 0239 389 0	CONTACT WASHER	A12	4	
2	00 0234 330 0	WASHER	13X37X3	4	
3	00 0826 080 0	GUARD CUP		1	
4	00 0826 244 1	BEARING HOUSING		1	
5	00 0234 398 0	SHIM	45X55X0,1	1	1)
5	00 0234 411 0	SHIM	45X55X0,3	1	2)
5	00 0234 423 0	SHIM	45X55X0,5	1	3)
6	00 0238 509 1	ECCENTRIC LOCKING COLLAR	45	1	
7	00 0213 825 0	THREADED PIN	M10X1,25X8	1	
8	00 0233 439 0	LOCK COLLAR BEAR.	YEN 209-S	1	
9	00 0235 554 0	HEXAGON HEAD BOLT	M12X50	2	
9	00 0238 234 0	LOCK NUT	M12	2	
9	00 0239 389 0	CONTACT WASHER	A12	2	

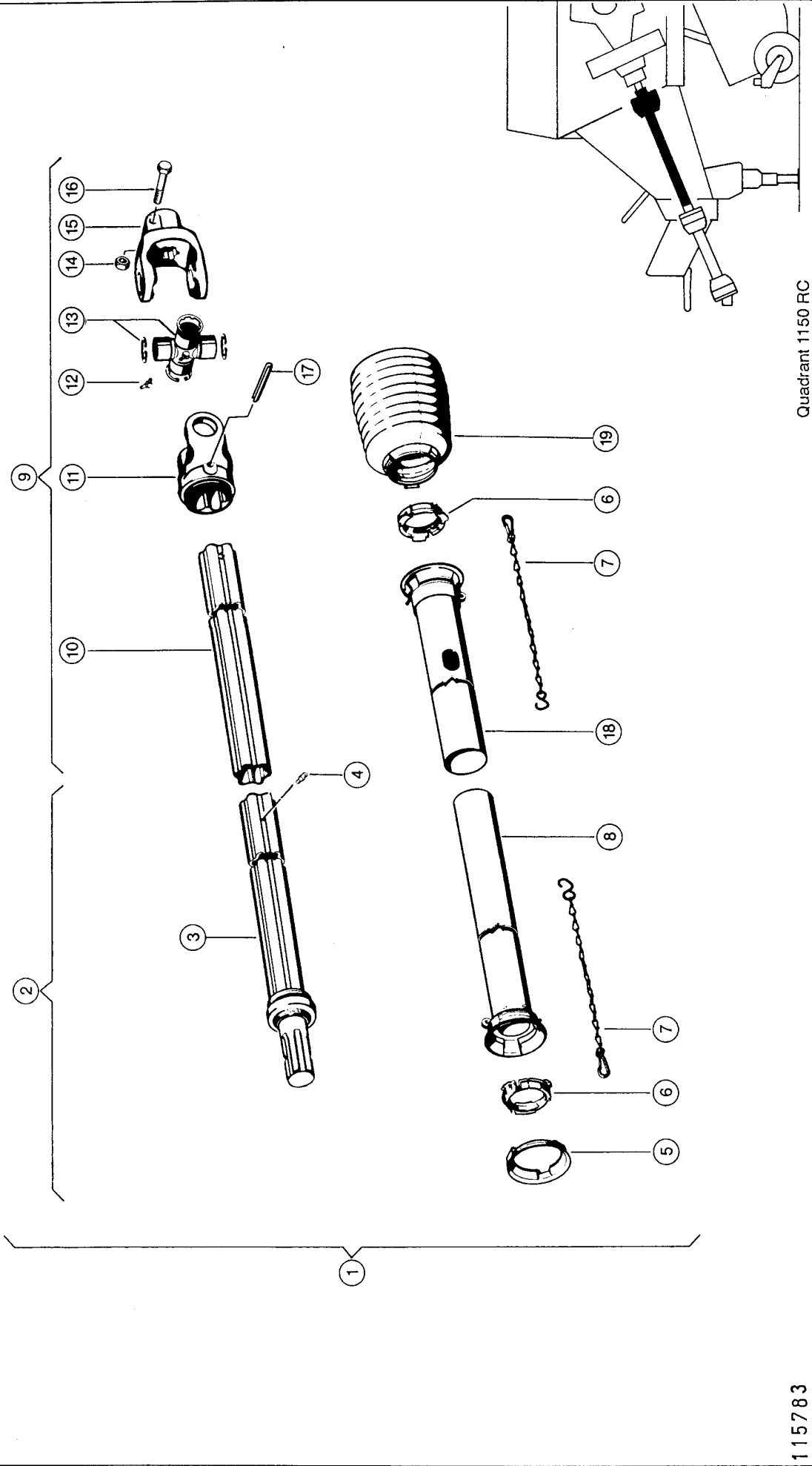
1) Remarks	0.1 mm
-------------------	--------

2) Remarks	0,3 MM
-------------------	--------

3) Remarks	0,5 MM
-------------------	--------

3

CLHHS



Quadrant 1150 RC

115783

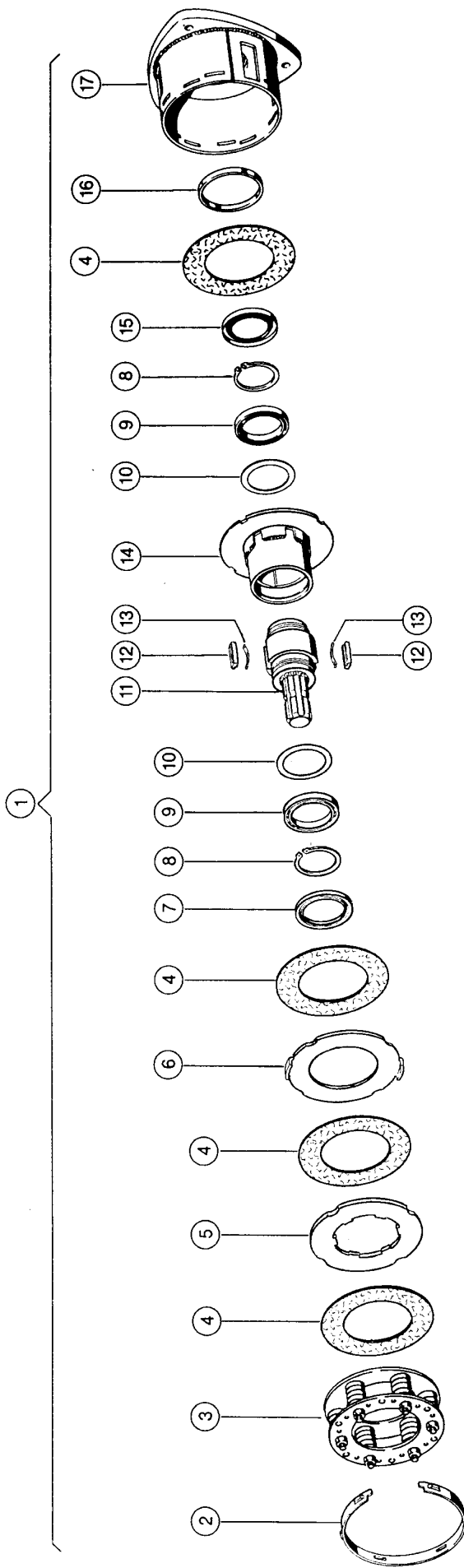
UNIVERSAL DRIVE SHAFT

Pos.	Part No.	Description	Dimension	Quantity	Conditions
1	00 0831 890 0	DRIVE SHAFT		1	1)
1	00 0814 734 0	DRIVE SHAFT ASSY.		1	2)
2	00 0814 741 0	DRIVE SHAFT HALF		1	
3	00 0831 896 0	INTERMED.SHAFT	LZ=825	1	1)
3	00 0814 742 0	PROFILE SHAFT		1	2)
4	00 0244 943 0	GREASE NIPPLE	A M6X1	1	
5	00 0920 955 1	GUARD RING		1	
6	00 0920 671 0	GLIDE RING		2	
7	00 0972 297 0	SUPPORTING CHAIN		2	
8	00 0942 136 1	INNER GUARD HALF		1	
9	00 0814 743 0	DRIVE SHAFT HALF		1	
10	00 0814 744 0	PROFILE SHAFT		1	
11	00 0941 644 0	FORK		1	
12	00 0211 636 0	GREASE NIPPLE	B M8X1-67,5°	1	
13	00 0813 681 0	CENTRE CROSS ASS.		1	
14	00 0238 047 0	LOCK NUT	M16	1	
15	00 0941 643 0	EXTENSION FORKE		1	
16	00 0235 593 0	HEXAGON HEAD BOLT	M16X90	1	
17	00 0213 688 1	SPRING PIN	10 X 90	1	
18	00 0814 760 0	PROTECTIVE TUBE		1	
19	00 0817 326 0	PROTECT.FUNNEL		1	
1)	Remarks	from No. 04500090			
2)	Remarks	BIS NR. 04500089			

4

CLAAS

QUADRANT 1150 RC



Quadrant 1150 RC

115784

FRICION AND OVERRUNNING CLUTCH

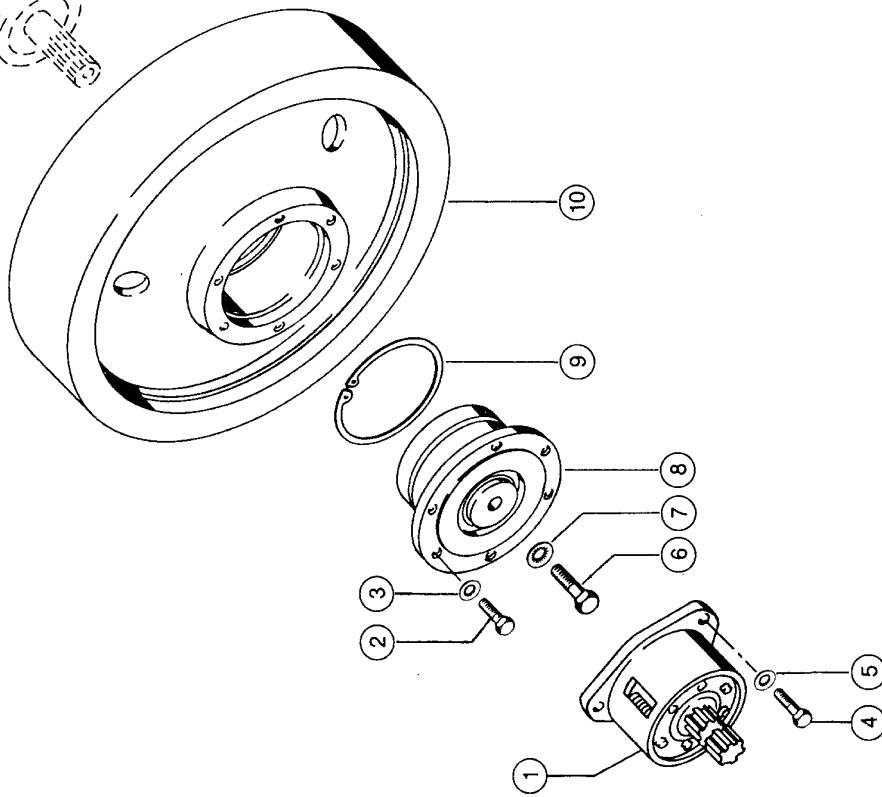
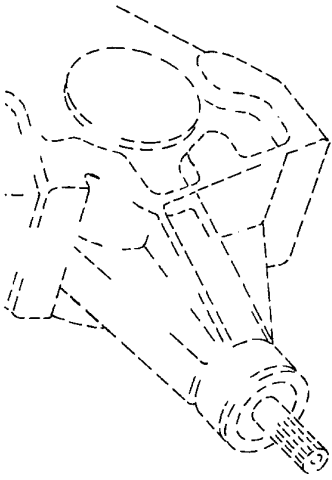
Pos.	Part No.	Description	Dimension	Quantity	Conditions
1	00 0831 548 0	FRICION CLUTCH		1	
2	00 0941 099 0	ADJUSTING RING		1	
3	00 0830 296 0	SPRING KIT		1	1)
4	00 0941 104 1	FRICION PLATE		4	
5	00 0941 106 0	DRIVE PLATE		1	
6	00 0941 107 0	DRIVE PLATE		1	
7	00 0921 795 0	SEALING RING		1	
8	00 0237 597 0	CIRCLIP	60X2	2	
9	00 0211 846 0	GRVD.BALL BEARING	61812	2	
10	00 0921 796 0	BACK-UP WASHER		2	
11	00 0817 305 0	HUB		1	
12	00 0814 228 0	STOP KEY		2	
13	00 0814 229 0	FLAT SPRING		2	
14	00 0921 794 1	COUPLER		1	
15	00 0238 277 2	SHAFT SEAL	AS 55X 80X 8	1	
16	00 0941 110 0	RING		1	
17	00 0814 766 1	CLUTCH HOUSING		1	

1) Remarks

m = 1200 Nm

5

Quadrant 1150 RC



CLIAS

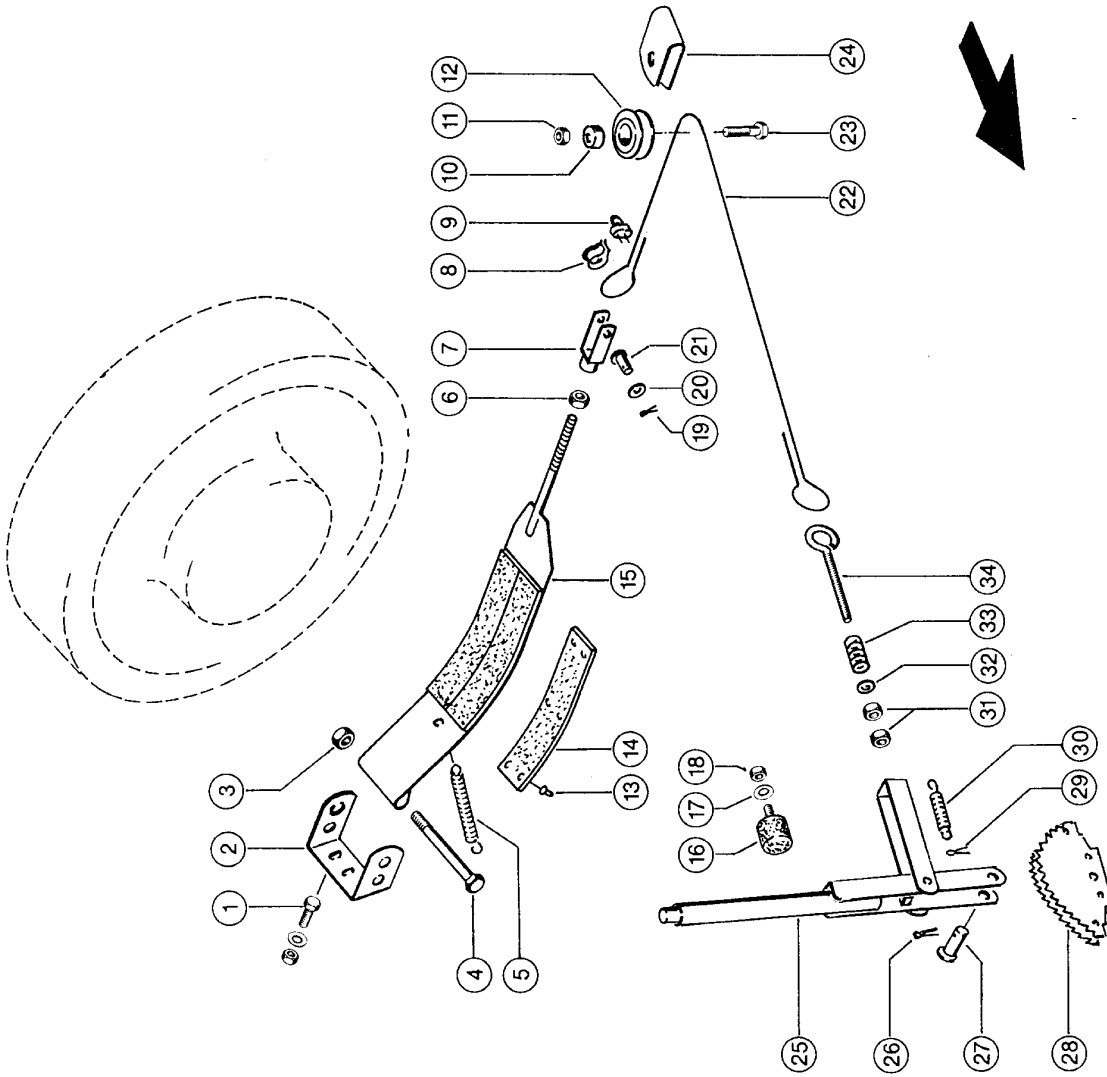
FLYWHEEL GP

Pos.	Part No.	Description	Dimension	Quantity	Conditions
1	00 0831 548 0	FRICITION CLUTCH		1	1)
2	00 0233 244 0	HEXAGON HEAD BOLT	M12X40-MKL	3	
3	00 0242 824 1	WASHER	12 -12,2X18,3X2,5	3	
4	00 0215 455 0	HEXAGON HEAD BOLT	M12X60-MKL	3	
5	00 0239 389 0	CONTACT WASHER	A12	3	
6	00 0233 334 0	HEXAGON HEAD SCREW	W.ERS.D.2333341	1	
7	00 0212 191 0	CONTACT WASHER	A20	1	
8	00 0831 233 1	CLUTCH		1	
9	00 0213 774 0	CIRCLIP	170X4	1	
10	00 0831 232 1	FLYWHEEL		1	

1) Remarks see illustration plate 4

6

Quadrant 1150 RC



CLHHS

QUADRANT 1150 RC

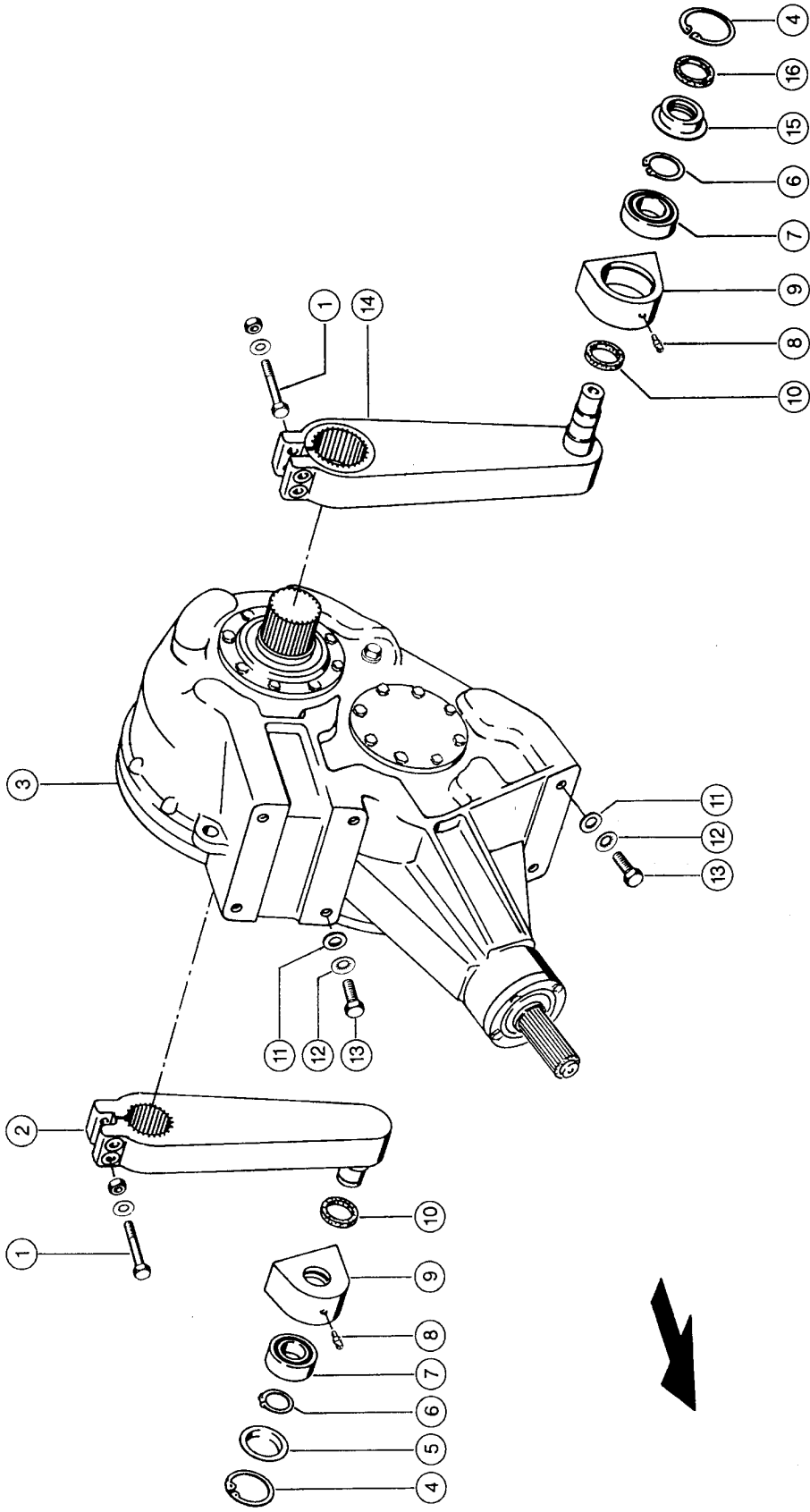
115786

FLYWHEEL BRAKE

Pos.	Part No.	Description	Dimension	Quantity	Conditions
1	00 0236 200 0	HEXAGON HEAD BOLT	M8X20	2	
1	00 0236 170 0	HEXAGONAL NUT	M8	2	
1	00 0239 387 0	CONTACT WASHER	A8-8,2X18X1,4	2	
2	00 0831 555 0	SUPPORT	50X6X117.3	1	
3	00 0238 047 0	LOCK NUT	M16	1	
4	00 0242 795 0	HEXAGON HEAD BOLT	M16X140	1	
5	00 0930 887 0	TENSION SPRING	2X15X 98 ERS.D.930887.1	1	
6	00 0236 171 0	HEXAGONAL NUT	M10	1	
7	00 0632 127 0	FORK HEAD	G 10X40	1	
8	00 0239 067 1	THIMBLE	8	2	
9	00 0940 002 0	WIRE ROPE CLAMP	A 3 M4X9X12X20	2	
10	00 0965 708 0	SPACER BUSH		1	
11	00 0237 947 0	HEX. NUT WITH CLAMP. PART	M10	1	
12	00 0965 693 0	CABLE ROLLER	D22X60X13	1	
13	00 0235 765 0	RIVET	A 4X13	12	
14	00 0830 148 0	BRAKE LINING		2	
15	00 0830 144 2	BRAKE BAND		1	
16	00 0980 464 0	BUFFER BUMPER	B40X35-M8X22,5	1	
17	00 0239 387 0	CONTACT WASHER	A8-8,2X18X1,4	1	
18	00 0238 132 0	LOCK NUT	M8	1	
19	00 0235 089 0	SPLIT PIN	4 X 22	1	
20	00 0238 292 0	WASHER	10,5X 22 X1	1	
21	00 0632 133 0	PIN	B-10A12X28X4,5	1	
22	00 0831 554 0	WIRE ROPE	D4X 590 LG	1	
23	00 0235 533 0	HEX.HEAD BOLT	M10X45	1	
24	00 0903 156 0	RIP CORD GUIDE		1	
25	00 0830 167 0	BRAKE LEVER		1	
26	00 0236 152 0	SPLIT PIN	3,2X22	1	
27	00 0244 515 0	PIN	B12H11X 45	1	
28	00 0830 149 0	TOOTHED SEGMENT		1	
29	00 0235 090 0	SPLIT PIN	4 X 28	1	
30	00 0502 119 0	TENSION SPRING	1,5 X 13,5X 33	1	
31	00 0236 171 0	HEXAGONAL NUT	M10	2	
32	00 0234 325 0	WASHER	11 X 21 X3	1	
33	00 0800 444 1	COMPRESS.SPRING	4,5 X 15 X 30	1	
34	00 0751 026 0	EYE BOLT	M10X135	1	

7

CLAAS



Quadrant 1150 RC

115787

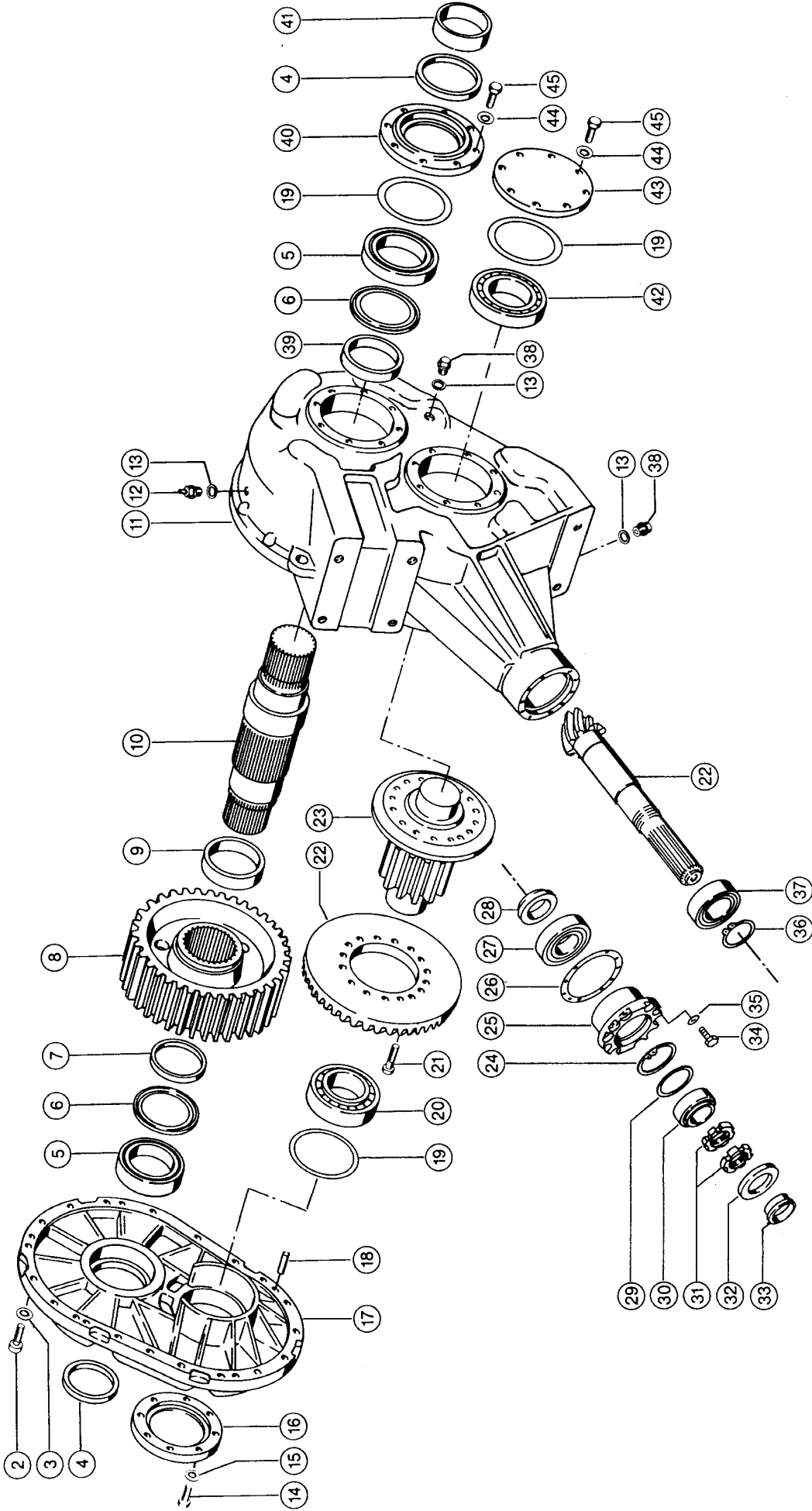
GEARBOX

Pos.	Part No.	Description	Dimension	Quantity	Conditions
1	00 0244 391 0	HEXAGON HEAD BOLT	M12X95	4	
1	00 0236 172 0	HEXAGONAL NUT	M12	4	
1	00 0239 389 0	CONTACT WASHER	A12	4	
2	00 0830 162 1	CRANK ARM		1	
3	00 0831 226 1	MAIN GEARBOX		1	1)
4	00 0236 318 0	CIRCLIP	80X2,5	2	
5	00 0810 710 0	COVER	D80X11	1	
6	00 0244 058 0	CIRCLIP	40X2,5	2	
7	00 0238 280 3	SPHERICAL ROLLER BEARING	22208	2	
8	00 0236 942 0	GREASE NIPPLE	E/S-C3-40X80X23 A S6X1	2	
9	00 0830 159 0	BEARING HOUSING	120X100X50	2	
10	00 0215 320 0	FELT RING	57X45XD.X5 MM	2	
11	00 0238 990 0	WASHER	Ø16,5 X Ø33,5 - 1X5	6	
12	00 0239 391 0	CONTACT WASHER	A16	6	
13	00 0215 352 0	HEX.HEAD BOLT	M16X1,5X 45-MKL	6	
14	00 0830 161 2	CRANK ARM		1	
15	00 0830 160 1	RING	D79,8X16,5	1	
16	00 0244 652 0	FELT RING	40	1	
1)	Remarks	see illustration plate 8			

8

CLAS

1



Quadrant 1150 RC

115788

GEARBOX

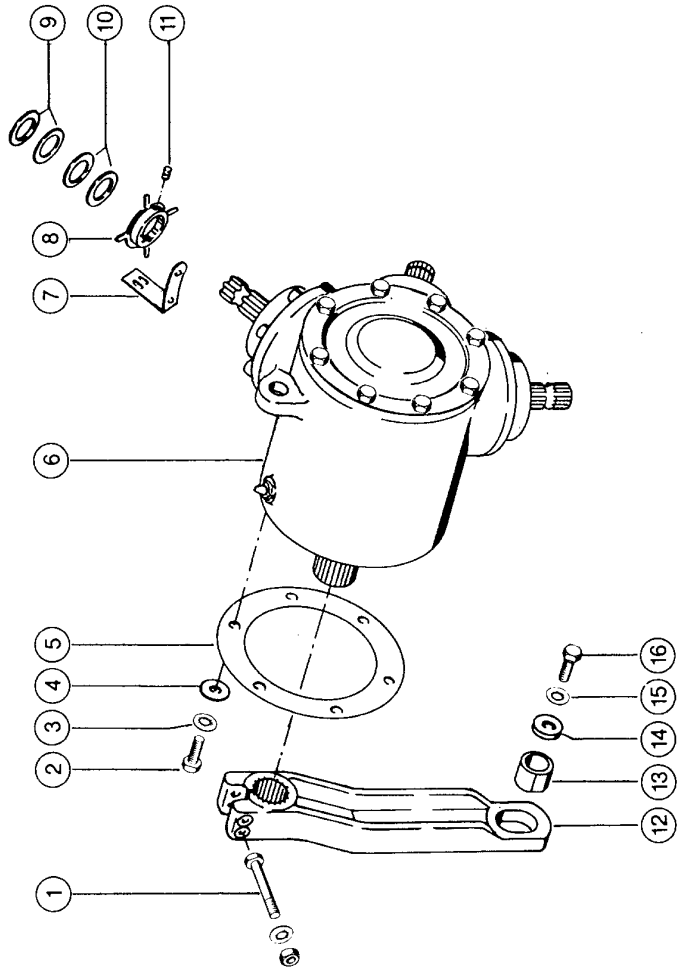
Pos.	Part No.	Description	Dimension	Quantity	Conditions
1	00 0831 226 1	MAIN GEARBOX		1	
2	00 0242 263 0	SOCKET HEAD SCREW	M12X 45(CN 200052)REF.02	19	
3	00 0242 824 1	WASHER	12 -12,2X18,3X2,5	19	
4	00 0212 689 0	SHAFT SEAL	AS 100X120X12	2	
5	00 0215 782 0	CY.ROLLER BEARING	NCF 2920 V	2	
6	00 0215 783 0	BEARING SEAL RING	619 20 AV	2	
7	00 0830 763 0	BUSHING		1	
8	00 0830 699 0	SPUR GEAR		1	
9	00 0830 761 0	BUSHING		1	
10	00 0830 760 0	PROFILE SHAFT		1	
11	00 0830 693 2	GEARBOX HOUSING		1	
12	00 0817 304 0	BREATHER VALVE	M18X1,5	1	
13	00 0238 533 1	SEALING RING	C18 X22	3	
14	00 0237 874 0	HEXAGON HEAD BOLT	M10X35	8	
15	00 0235 133 1	SPRING WASHER	10 -10,2X18,1X1,8	8	
16	00 0830 695 0	HOUSING COVER		1	
17	00 0830 694 0	HOUSING COVER		1	
18	00 0215 784 0	SPRING PIN	12 X 40	6	
19	00 0213 606 0	SHIM	125X139X2	1	1)
19	00 0215 932 1	SHIM	118X140X1	1	2)
19	00 0215 785 2	SHIM	118X140X0,5	1	3)
19	00 0215 786 2	SHIM	118X140X0,3	1	4)
19	00 0215 787 2	SHIM	118X140X0,1	1	5)
20	00 0215 781 0	TA.ROLLER BEARING	33216-80X140X46	1	
21	00 0235 553 0	HEXAGON HEAD BOLT	M12X45	16	6)
21	00 0238 875 1	HEXAGON HEAD BOLT	M10X40	16	7)
22	00 0831 234 2	BEVEL GEAR SET	S	1	
23	00 0830 698 0	PINION SHAFT		1	
24	00 0236 318 0	CIRCLIP	80X2,5	1	
25	00 0831 229 2	COVER	D140X65	1	
25	00 0090 121 0	SCREW PLUG	M16X1,5	1	8)
25	00 0213 843 0	O-RING	104 X3 -N	1	8)
26	00 0813 180 1	SHIM	111 X140 X0,9	1	9)
26	00 0813 179 0	SHIM	111X140X0,8	1	10)
26	00 0813 178 0	SHIM	111X140X0,6	1	11)
26	00 0813 177 0	SHIM	111X140X0,5	1	3)
26	00 0813 176 1	SHIM	111 X140 X0,15	1	12)
27	00 0243 695 0	TA.ROLLER BEARING	31310 J2/QCL7C	1	
28	00 0813 174 0	RING	D80X15	1	
29	00 0211 098 0	SHIM	S 68X79,5X3	1	
30	00 0236 008 0	TA.ROLLER BEARING	32010 X -50X80X20	1	
31	00 0179 845 0	SLOTTED NUT	M50X1,5	2	
32	00 0212 113 0	SHAFT SEAL	A 50X90X10	1	
33	00 0831 230 0	BUSHING	D55X23,5	1	
34	00 0215 009 0	HEXAGON HEAD BOLT	M8X1X 25	10	
35	00 0235 132 1	SPRING WASHER	8 -8,1X14,8X1,6	10	
36	00 0243 044 0	CIRCLIP	55X2	1	
37	00 0239 446 0	CY.ROLLER BEARING	NUP 2211 V	1	
38	00 0244 352 0	SCREW PLUG	-55X100X25 M18X1,5	2	
39	00 0830 762 0	BUSHING		1	
40	00 0830 697 0	HOUSING COVER		1	
41	00 0212 641 0	INNER RING	IR 90X100X30	1	

GEARBOX

Pos.	Part No.	Description	Dimension	Quantity	Conditions
42	00 0243 678 0	TA.ROLLER BEARING	T3EC080-80X140X35, 25	1	
43	00 0830 696 0	HOUSING COVER		1	
44	00 0235 133 1	SPRING WASHER	10 -10,2X18,1X1,8	16	
45	00 0237 453 0	HEXAGON HEAD BOLT	M10X30	16	
1)	Remarks		2.0 mm		
2)	Remarks		1,0 MM		
3)	Remarks		0,5 MM		
4)	Remarks		0,3 MM		
5)	Remarks		0,1 MM		
6)	Remarks		from No. 04500215		
7)	Remarks		BIS NR. 04500214		
8)	Remarks		AB NR. 04500215		
9)	Remarks		0.9 mm		
10)	Remarks		0,8 MM		
11)	Remarks		0,6 MM		
12)	Remarks		0,15 MM		

9

Quadrant 1150 RC



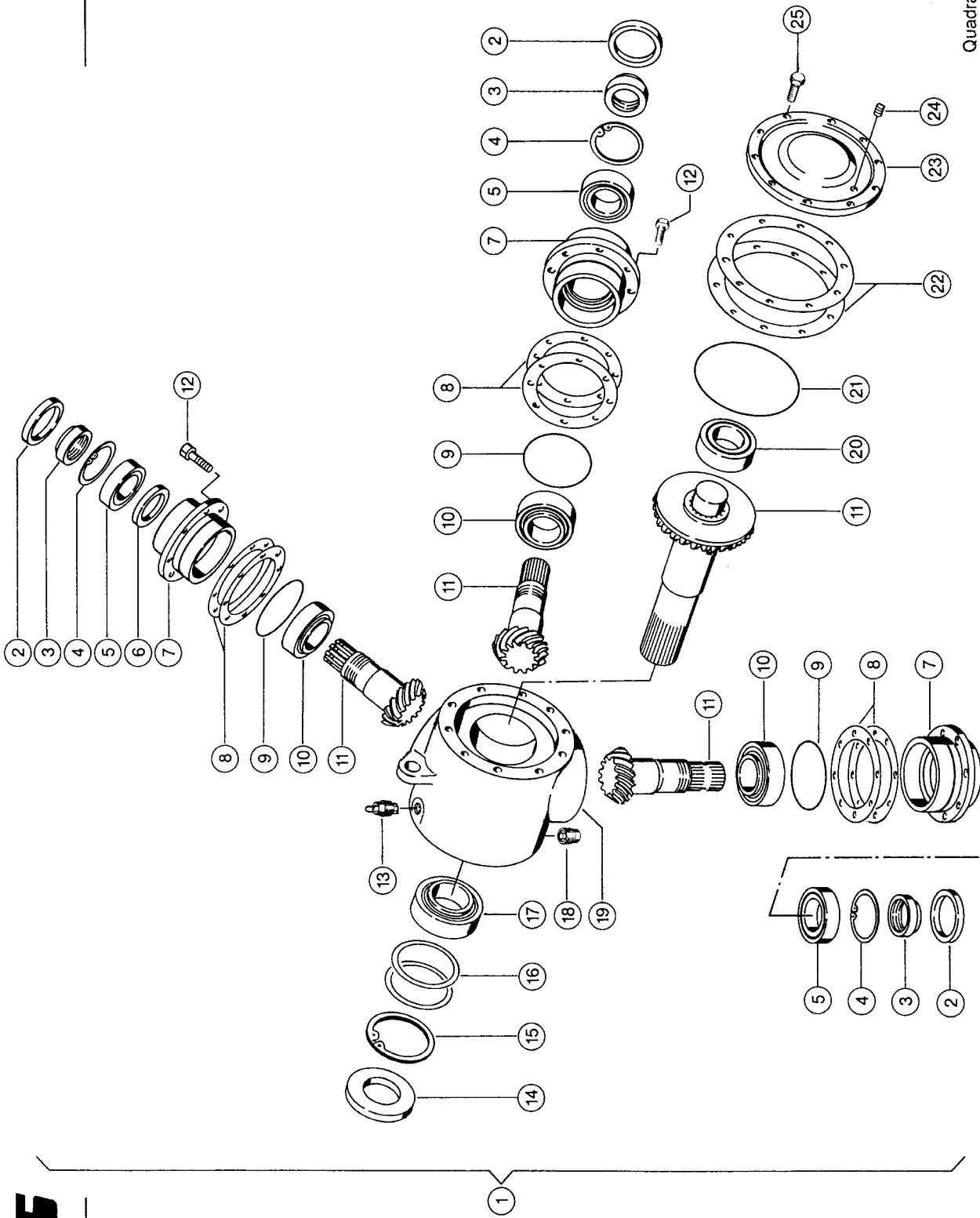
CLAAS

AUXILIARY GEARBOX

Pos.	Part No.	Description	Dimension	Quantity	Conditions
1	00 0235 563 0	HEXAGON HEAD BOLT	M12X100	2	
1	00 0236 172 0	HEXAGONAL NUT	M12	2	
1	00 0235 134 1	SPRING WASHER	12	2	
2	00 0236 328 0	HEXAGON HEAD BOLT	M14X45	6	
3	00 0239 390 0	CONTACT WASHER	A14	6	
4	00 0234 334 0	WASHER	15 X 37 X3	5	1)
4	00 0234 289 0	WASHER	15X26X2	1	2)
5	00 0830 623 1	WASHER	1X280X280	1	
6	00 0084 591 0	ANGLE DRIVE	I=0,5	1	3)
7	00 0831 703 1	ANGLE	3X56,5X162,1	1	
8	00 0831 704 1	DISC		1	
9	00 0233 105 0	WASHER	35X55X1	1	4)
10	00 0234 181 0	WASHER	35X55X3	1	1)
11	00 0242 590 0	THREADED PIN	M 8X16	2	
12	00 0831 561 0	CRANK		1	
13	00 0830 078 1	BUSHING	45X35X30	1	
14	00 0234 377 0	WASHER	13X40X6	1	
15	00 0239 389 0	CONTACT WASHER	A12	1	
16	00 0237 458 0	HEXAGON HEAD BOLT	M12X20	1	

1) Remarks	3 mm
2) Remarks	2 MM
3) Remarks	see illustration plate 10
4) Remarks	1 mm

10



Quadrant 1150 RC

CLAAS

Thank you so much for reading.
Please click the “Buy Now!”
button below to download the
complete manual.



After you pay.

You can download the most
perfect and complete manual in
the world immediately.

Our support email:

ebooklibonline@outlook.com