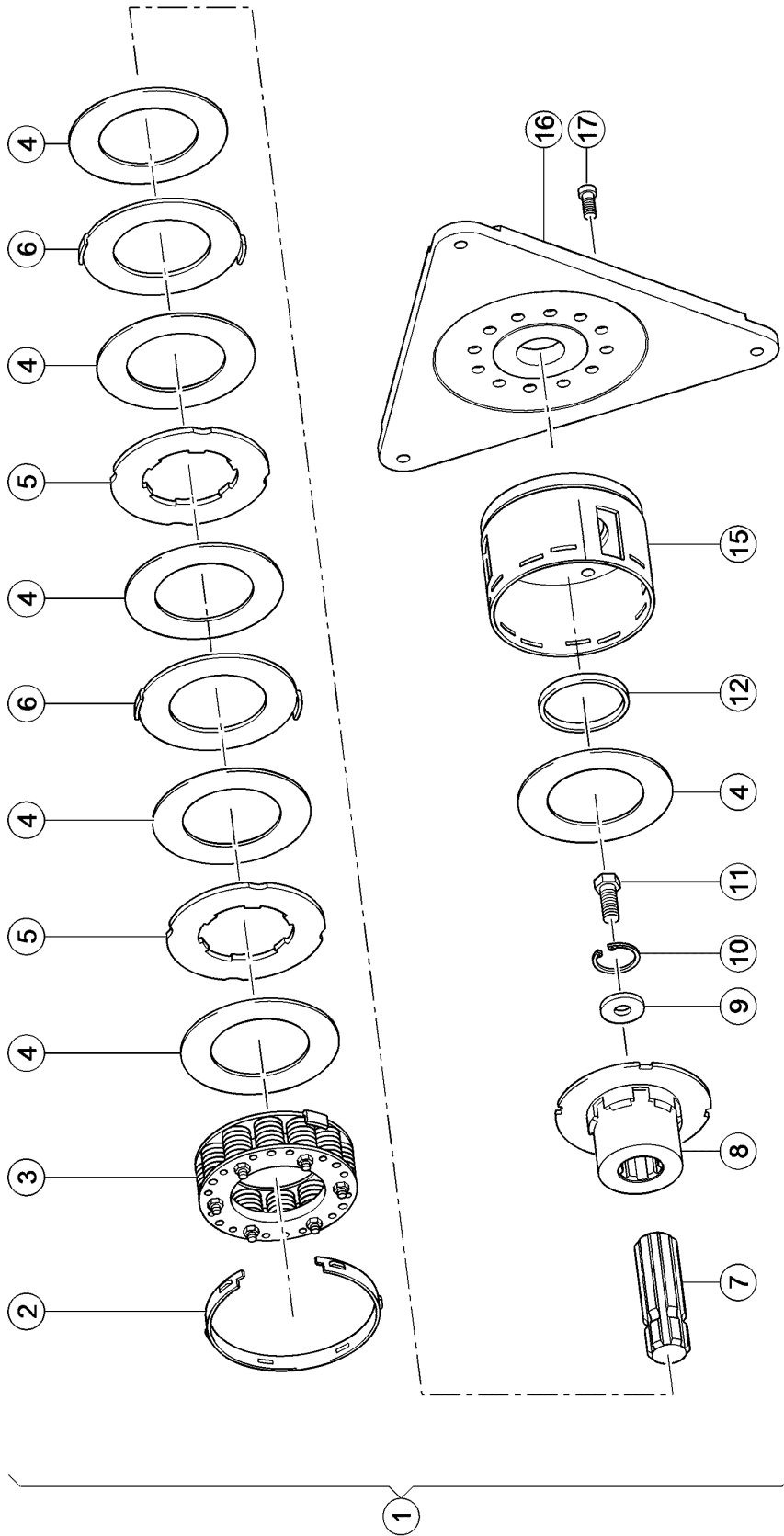
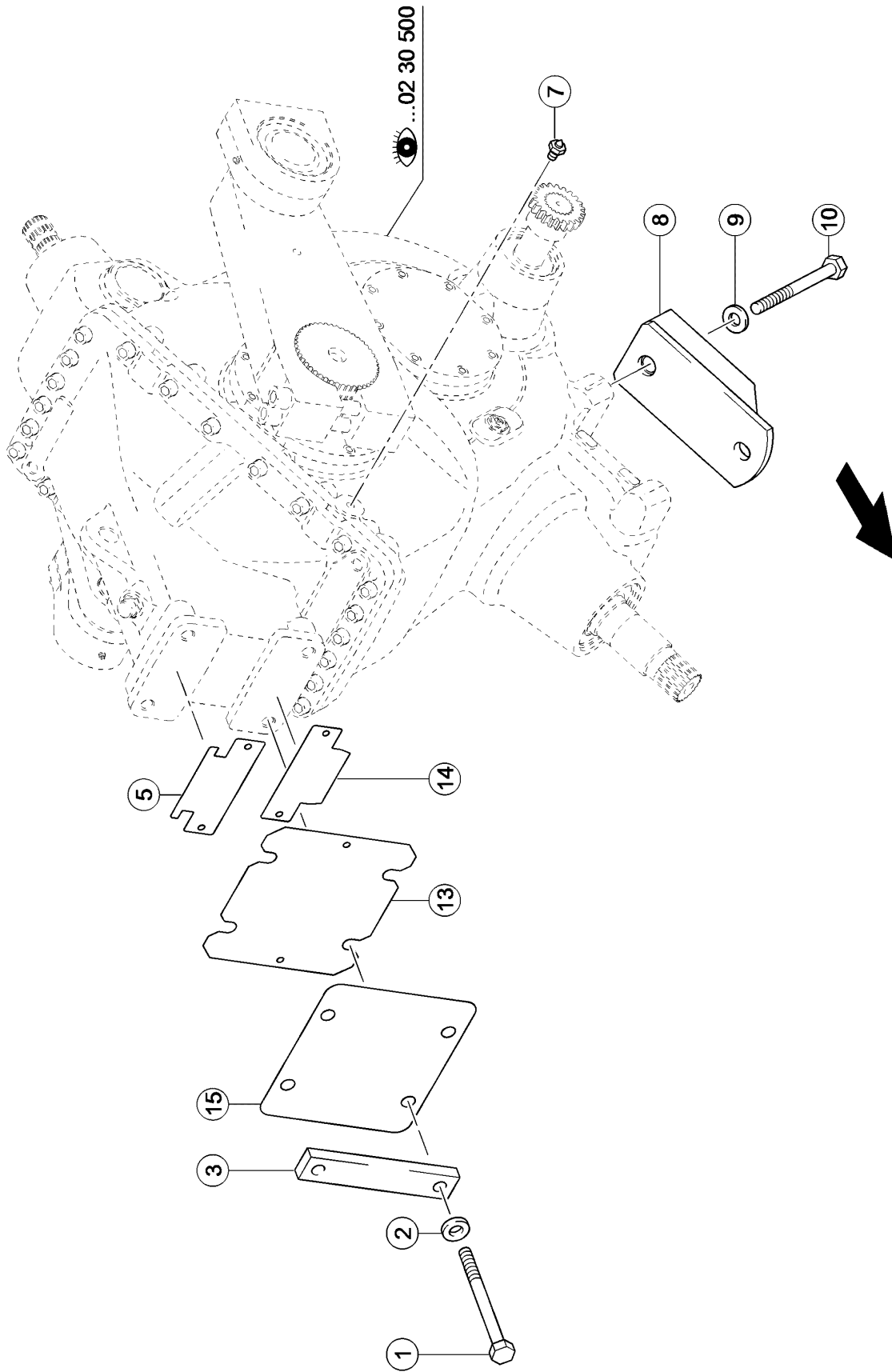


E0422 0215A200A 1



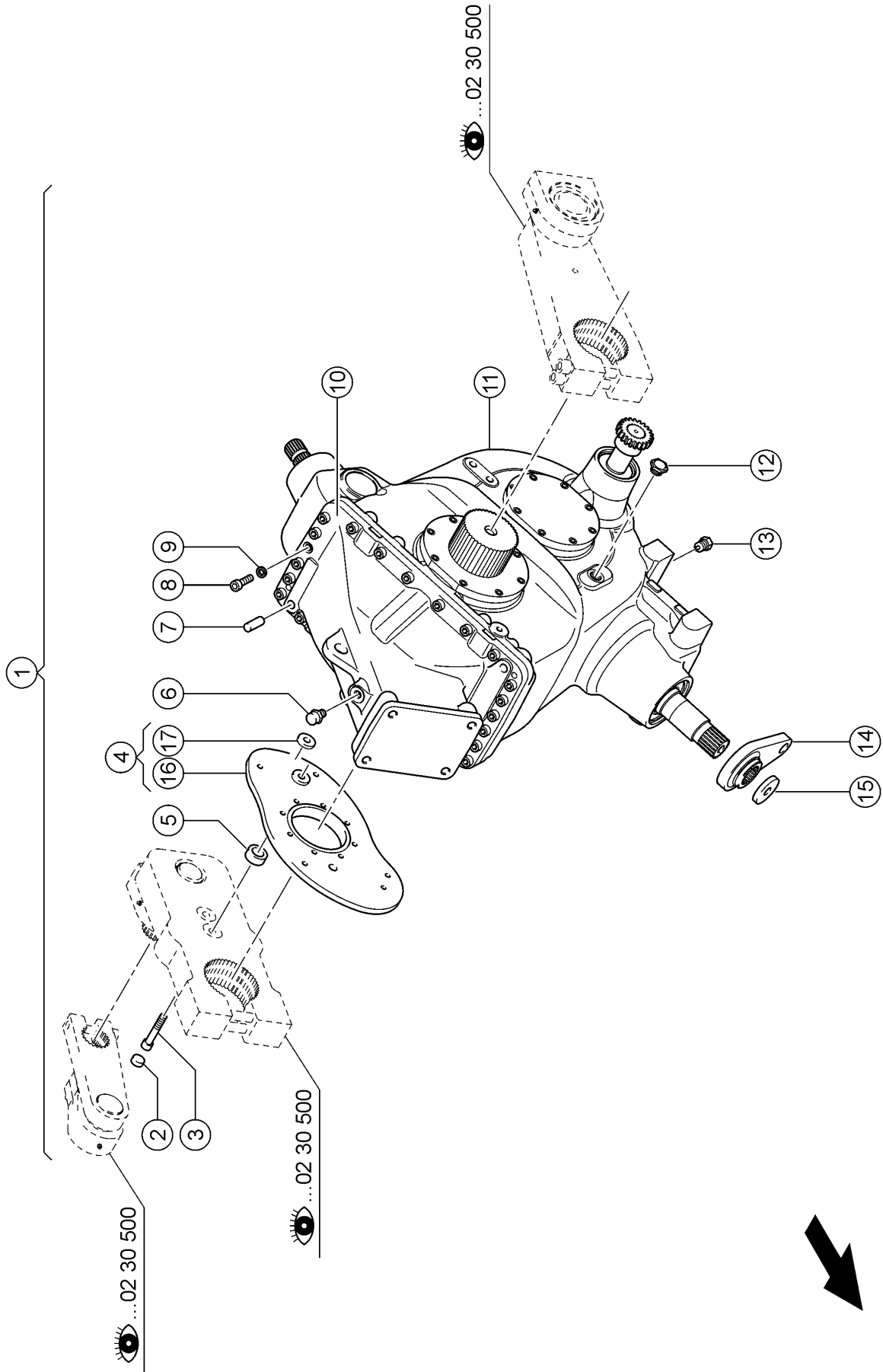
200 OVERLOAD CLUTCH

Pos.	Part No.	Description	Dimension	Quantity	Conditions
1	00 1327 438 0	FRICION CLUTCH		1	
2	00 0828 171 0	ADJUSTING RING		1	
3	00 0864 887 0	SPRING KIT		1	
4	00 0828 173 0	FRICION PLATE		6	
5	00 0828 174 0	DRIVE PLATE		2	
6	00 0828 175 0	DRIVE PLATE		2	
7	00 0864 888 0	SHAFT	1 3/4"(6)	1	
8	00 0864 889 0	HUB		1	
9	00 0864 890 0	WASHER	17X45X6	1	
10	00 0212 786 0	CIRCLIP	ERS.D.0863300.0	1	
11	00 0236 230 0	HEXAGON HEAD BOLT	45X2,0	1	
12	00 0941 110 0	RING	M16X35	1	
15	00 0864 891 0	CLUTCH HOUSING		1	
16	00 0864 892 0	FLANGE	EFK900-TK455/13(3)	1	
17	00 0213 264 0	SOCKET HEAD SCREW	M12X25-MK	12	



500 MAIN GEARBOX

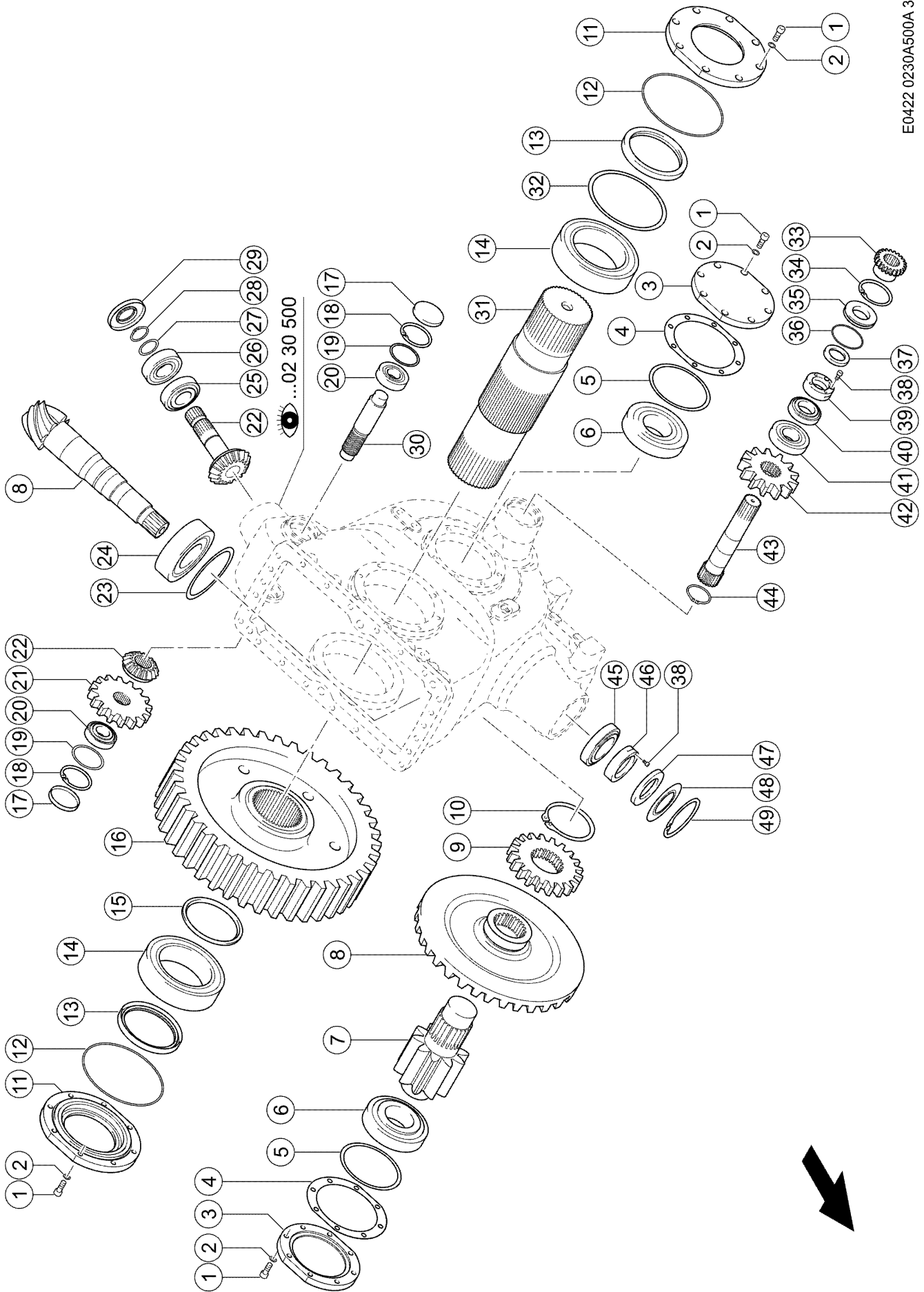
Pos.	Part No.	Description	Dimension	Quantity	Conditions
1	00 0219 879 0	HEXAGON HEAD SCREW	M20X170	4	
2	00 0212 191 0	CONTACT WASHER	A20	4	
3	00 1327 478 0	PLATE	30X70X260	2	
5	00 0867 504 1	SHIM PLATE	1X92X210	1	
7	00 0863 906 0	HEXAGON HEAD SCREW	HEX19 L=28	2	
8	00 0867 185 0	BRACKET		2	
9	00 0217 026 0	CONTACT WASHER	A 24	4	
10	00 0233 527 0	HEXAGON HEAD SCREW	M24X240	4	
13	00 1327 467 1	SHIM	1X260X300	1	
14	00 0865 934 1	SHIM	1X90X210	1	
15	00 1327 468 0	PLATE	260X300X3	1	



500 MAIN GEARBOX

Pos.	Part No.	Description	Dimension	Quantity	Conditions
1	00 1337 770 0	MAIN GEARBOX	I=21.7	1	
2	00 1339 947 0	SCREW PLUG	M36X1,5-KEG	1	
3	00 0217 360 0	SOCKET HEAD SCREW	M20X 80	2	
4	00 1339 944 0	PLATE		1	
4	00 1339 945 0	PLATE		1	
4	00 1339 946 0	SLEEVE		4	
5	00 1339 918 0	SLEEVE		1	
6	00 0841 823 0	FILTER	A-M24X2	1	
7	00 0863 262 0	CYLINDRICAL PIN	20X60	2	
8	00 0863 253 0	SOCKET HEAD SCREW	M16X55-DKMAX 24,3	24	
9	00 0863 255 0	LOCK WASHER	S16 -17X24X1,3	26	
10	00 1327 319 2	HOUSING		1	
11	00 1339 909 0	HOUSING		1	
12	00 0863 269 0	OIL INDICATEUR	A-M24X2	1	
13	00 0850 563 0	MAGNETIC FILTER BOLT	M24X2	1	
14	00 0865 175 0	COUPLER		1	
15	00 0865 176 0	WASHER	75X21X12	1	

E0422 0230A500A 3

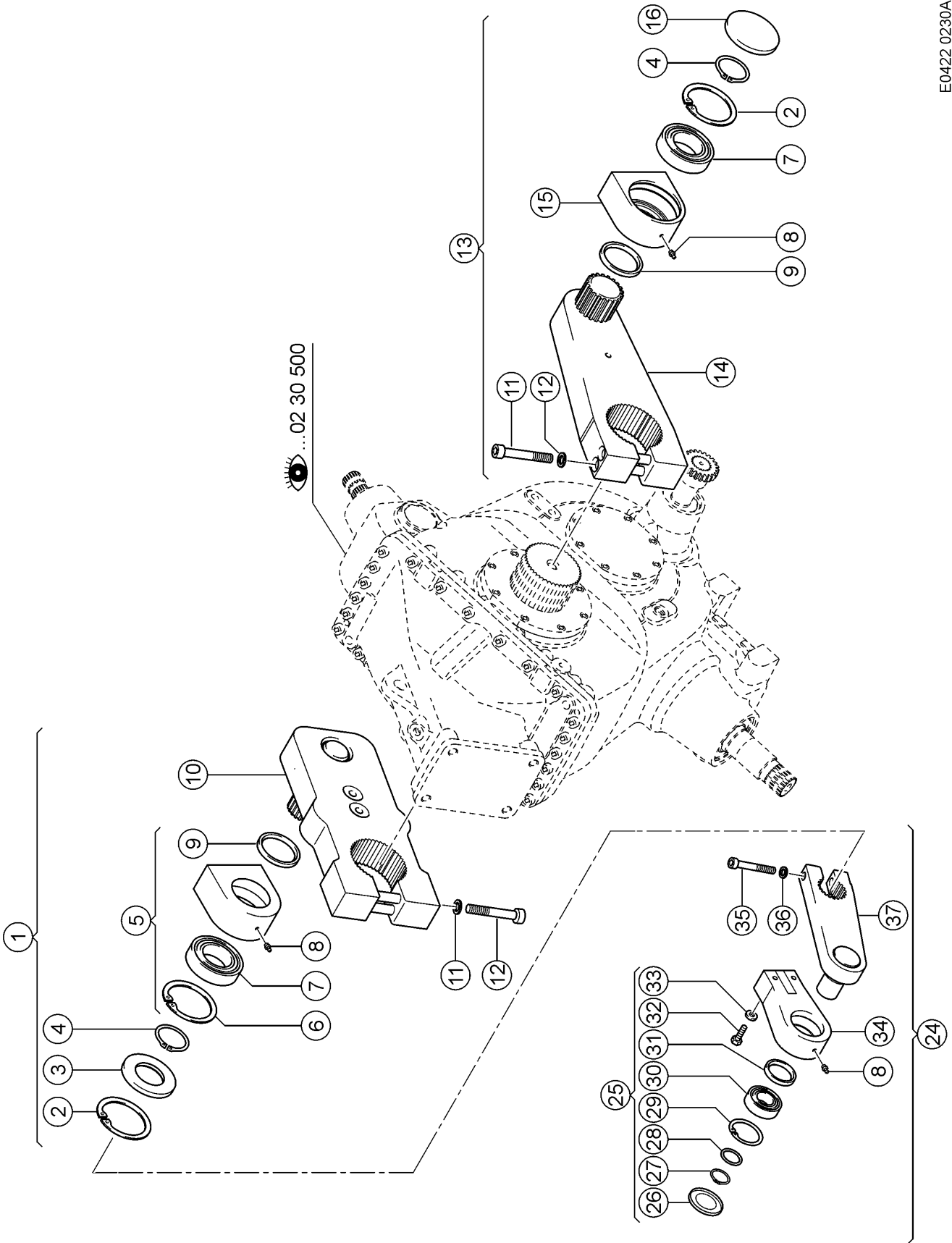


500 MAIN GEARBOX

Pos.	Part No.	Description	Dimension	Quantity	Conditions
1	00 0219 994 0	SOCKET HEAD SCREW	M12X 30	32	
2	00 0850 138 0	LOCK WASHER		32	
3	00 1327 327 0	COVER		2	
4	00 1327 323 0	SHIM		2	
5	00 0850 134 0	SPACER		2	
6	00 0233 092 0	TA.ROLLER BEARING	30317 - 85X180X44,5	2	
7	00 1339 912 0	SPUR GEAR	Z=10 ; M=13,5	1	
8	00 1339 919 0	BEVEL GEAR	R=5,57 M=12,8	1	1)
9	00 1339 911 0	SPUR GEAR	Z=20 M=11	1	
10	00 0243 053 0	CIRCLIP	130X4	1	
11	00 1339 914 0	COVER	D 210	2	
12	00 0233 115 0	O-RING	209,14 X3,53 -NBR 70	2	
13	00 0233 112 0	ROTARY SHAFT SEAL	B1SL140X170X15	2	
14	00 0233 096 0	SPHERICAL ROLLER BEARING	23028 - 140X210X53	2	
15	00 1339 943 0	SPACER RING	141X165X6,3	1	
16	00 1339 916 0	SPUR GEAR	Z=39 ; M=13,5	1	
17	00 0863 267 0	LOCK CAP	D80X10	2	
18	00 0214 263 0	CIRCLIP	80X4,0	2	
19	00 0850 580 0	SHIM	69,3X79,7 = 8 TEILE	2	
20	00 0243 683 0	TA.ROLLER BEARING	303 07	2	
21	00 1327 320 0	GEAR		1	
22	00 1327 334 0	BEVEL GEAR		1	1)
23	00 1327 331 0	SHIM		1	
24	00 0233 093 0	TA.ROLLER BEARING	32317B - 85X180X63,5	1	
25	00 0238 197 0	TA.ROLLER BEARING	30309- 45X100X27,25	1	
26	00 0215 130 0	GRVD.BALL BEARING	6309-RS*-C3 - 45X100X25	1	
27	00 1327 704 0	SPACER	E.045 SATZ	1	
28	00 0234 452 0	CIRCLIP	45X2,5	1	
29	00 0214 191 0	SHAFT SEAL	AS 45X100X10	1	
30	00 1339 917 0	SHAFT		1	
31	00 1339 915 0	GEAR SHAFT		1	
32	00 1327 332 0	SHIM		1	
33	00 1327 322 0	PINION		1	
34	00 0235 192 0	CIRCLIP	95X3	1	
35	00 1327 325 0	RING		1	
36	00 0213 168 0	O-RING	85,32X3,53	1	
37	00 0233 111 0	ROTARY SHAFT SEAL	48X72X10 AS	1	
38	00 0310 812 0	SOCKET HEAD SCREW	M 8X 16	2	
39	00 1327 329 0	RING		1	
40	00 0235 989 0	TA.ROLLER BEARING	30210 - 50X90X21,75	1	
41	00 0243 695 0	TA.ROLLER BEARING	31310 J2/QCL7C	1	
42	00 1339 910 0	GEAR	Z=13 M=11	1	
43	00 1339 913 0	GEAR SHAFT		1	
44	00 0213 669 0	CIRCLIP	62 X2	1	
45	00 0243 664 0	TA.ROLLER BEARING	30215	1	
46	00 1339 948 0	SHAFT NUT	M75X2	1	
47	00 0233 113 0	ROTARY SHAFT SEAL	AS 72X130X12	1	
48	00 1327 326 0	COVER		1	
49	00 0243 065 0	CIRCLIP	130X4	1	

1) Remarks

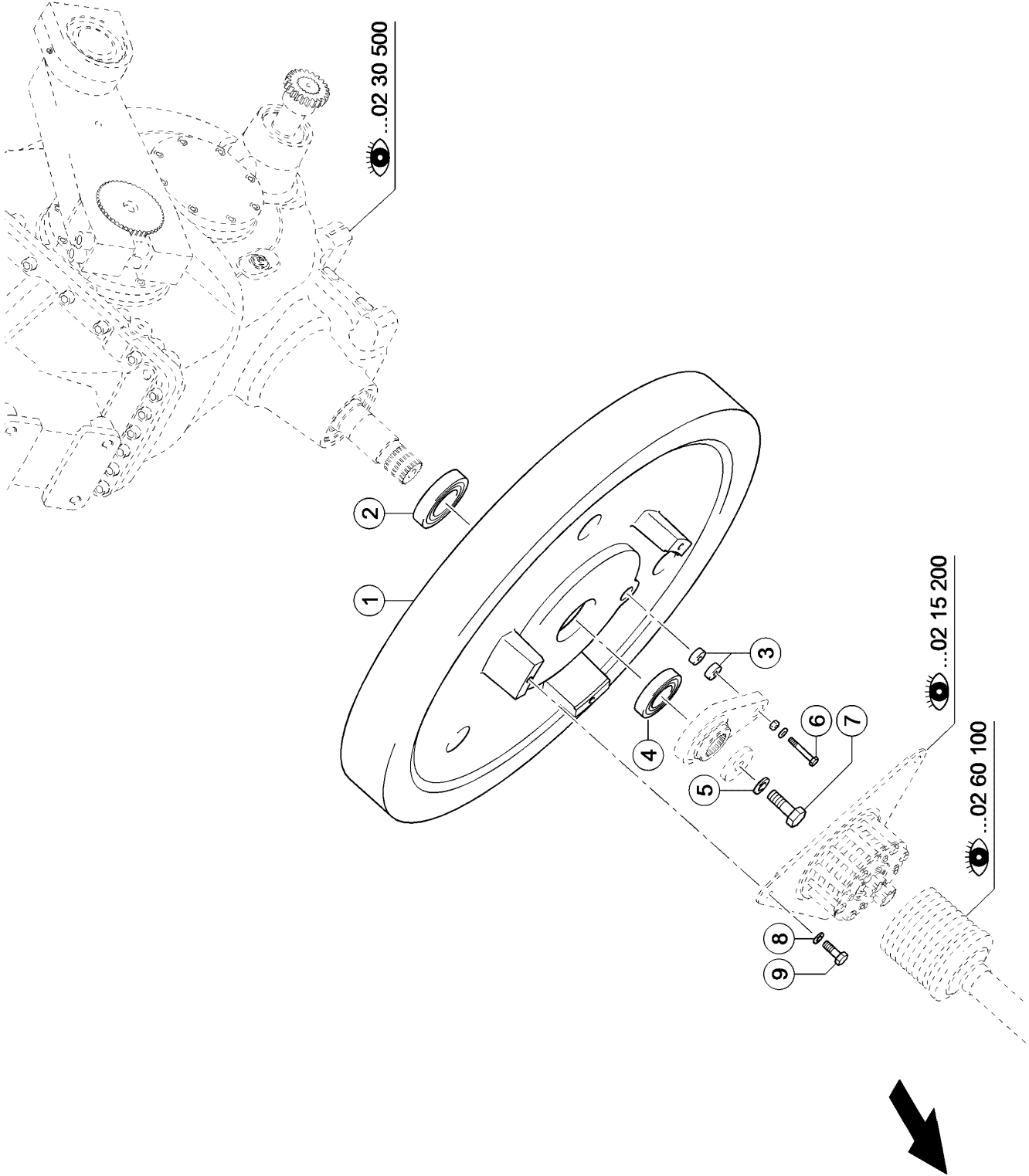
set



500 MAIN GEARBOX

Pos.	Part No.	Description	Dimension	Quantity	Conditions
1	00 1339 921 0	KURBEL RE VM	RECHT	1	
2	00 0243 064 0	CIRCLIP	125X4	3	
3	00 0214 836 0	SHAFT SEAL	AS 70X125X12	1	
4	00 0235 172 0	CIRCLIP	70X2,5	2	
5	00 1339 925 0	BEARING		1	
6	00 0243 064 0	CIRCLIP	125X4	3	
7	00 0243 618 0	SPHERICAL ROLLER BEARING	22214 EAW33	2	
8	00 0179 838 0	GREASE NIPPLE	A M8X1	3	
9	00 0233 932 0	SHAFT SEAL	AS 80X100X10	2	
10	00 1339 924 0	CRANK	RECHT	1	
11	00 1350 158 0	SCREW	M22X200 12.9 UNI5931	4	
12	00 1350 159 0	LOCK WASHER	S22	4	
13	00 1339 938 0	CRANK	LINKS - GROB (INCL.LAGER	1	
14	00 1339 939 0	CRANK	LINKS	1	
15	00 0833 850 0	BEARING BOX	D125	1	
16	00 0863 268 0	LOCK CAP	D125X10	1	
24	00 1327 336 0	CRANK		1	
25	00 0859 897 0	HUB PREASS.		1	
26	00 0863 239 0	COVER	D80X8	1	
27	00 0235 166 0	CIRCLIP	40X1,75	1	
28	00 0863 236 0	SPACER		1	
29	00 0236 318 0	CIRCLIP	80X2,5	1	
30	00 0238 280 3	SPHERICAL ROLLER BEARING	22208 E/S-C3-40X80X23	1	
31	00 0239 146 0	SHAFT SEAL	B2 55X 72X10	1	
32	00 0234 839 0	HEXAGON HEAD BOLT	M16X60-MKL	2	
33	00 0235 135 1	SPRING WASHER	16- 16,2X27,4X2,8	2	
34	00 0863 235 0	HUB		1	
35	00 1359 605 0	SOCKET HEAD SCREW	M18X100	1	
36	00 0863 256 0	LOCK WASHER	S18	1	
37	00 0863 815 0	CRANK	LINKS - KLEIN (EINZELN)	1	

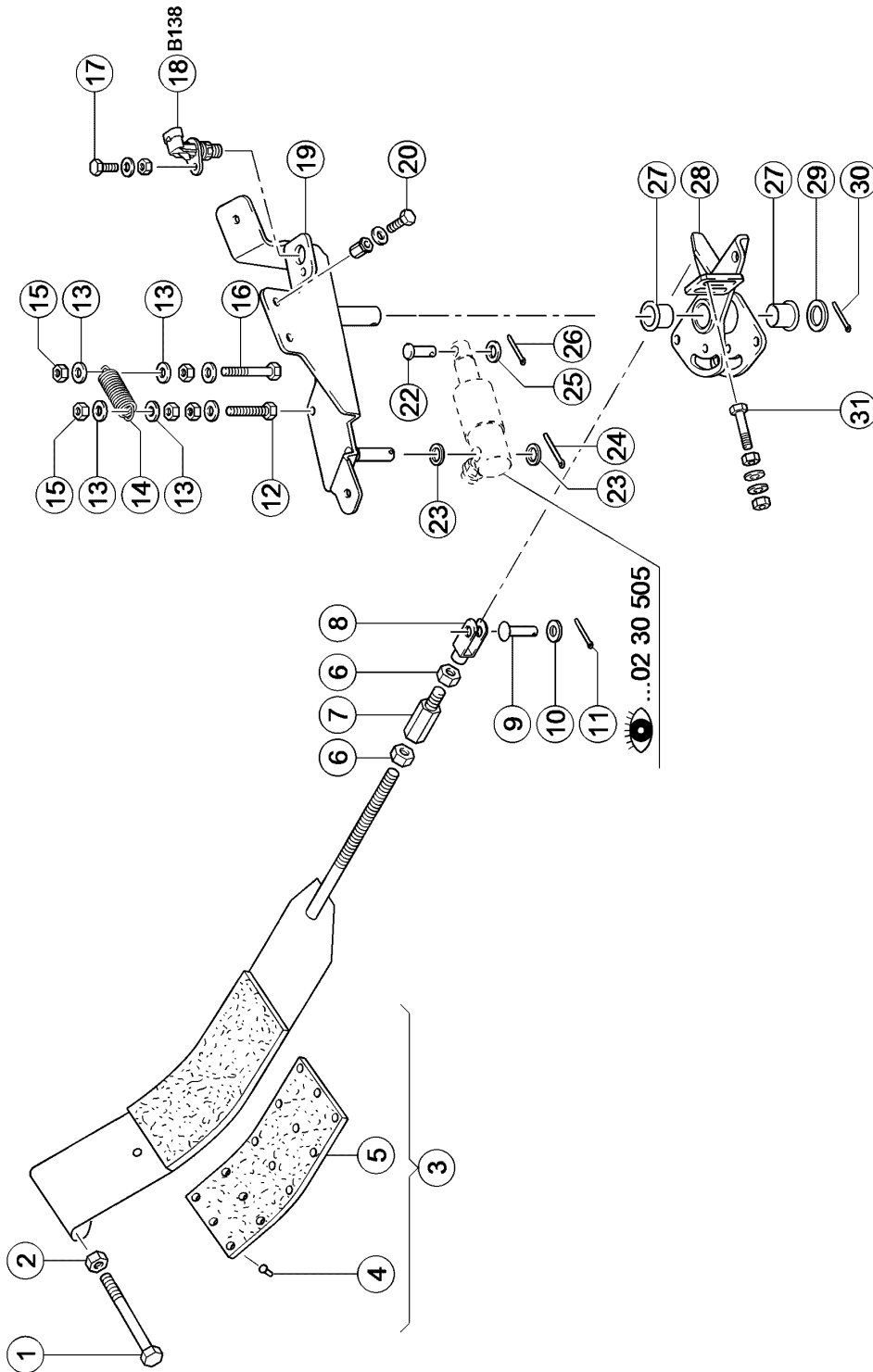
E0422 0230A504A 1



504 FLYWHEEL

Pos.	Part No.	Description	Dimension	Quantity	Conditions
1	00 0865 172 2	FLYWHEEL		1	1)
2	00 0243 905 0	GRVD.BALL BEARING	6213 LLU/5K	1	
3	00 0826 219 0	SHEAR BUSHING	D30X12,3	2	
4	00 0244 275 1	GRVD.BALL BEARING	6211-2RS*-C3	1	
5	00 0212 191 0	CONTACT WASHER	A20	1	
6	00 0215 707 1	HEX.HEAD BOLT	M 8X80	1	
6	00 0239 387 0	CONTACT WASHER	A8-8,2X18X1,4	1	
6	00 0239 426 0	LOCK NUT	M08	1	
7	00 0212 310 0	HEXAGON HEAD BOLT	M20X1,5X 65	1	
8	00 0239 389 0	CONTACT WASHER	A12	3	
9	00 0211 058 0	HEXAGON HEAD BOLT	M12X40-MKL	3	

1) Remarks with Item 2-4



505 FLYWHEEL BRAKE 1)

Pos.	Part No.	Description	Dimension	Quantity	Conditions
1	00 0242 795 0	HEXAGON HEAD BOLT	M16X140	1	
2	00 0238 047 0	LOCK NUT	M16	1	
3	00 0832 241 3	BRAKE BAND		1	
4	00 0235 768 0	RIVET	A4X15	15	
5	00 0841 161 0	BRAKE BAND		1	
6	00 0236 171 0	HEXAGONAL NUT	M10	2	
7	00 0865 709 0	ADAPTER	HEX16 L=75	1	
8	00 0632 127 0	FORK HEAD	G 10X40	1	
9	00 0632 133 0	PIN	B-10A12X28X4,5	1	
10	00 0238 292 0	WASHER	10,5X 22 X1	2	
11	00 0235 089 0	SPLIT PIN	4 X 22	2	
12	00 0236 213 0	HEXAGON HEAD BOLT	M8X35	1	
12	00 0239 393 1	CONTACT WASHER	B 8 -8.2X22X1,9	1	
12	00 0236 170 0	HEXAGONAL NUT	M8	2	
13	00 0239 393 1	CONTACT WASHER	B 8 -8.2X22X1,9	4	
14	00 0750 308 0	TENSION SPRING	3,5 X 19,5X 84	1	
15	00 0238 132 0	LOCK NUT	M8	2	
16	00 0237 444 0	HEXAGON HEAD BOLT	M8-45	1	
16	00 0239 393 1	CONTACT WASHER	B 8 -8.2X22X1,9	1	
16	00 0236 170 0	HEXAGONAL NUT	M8	1	
17	00 0237 466 0	HEXAGON HEAD BOLT	M06X20	1	
17	00 0239 386 0	CONTACT WASHER	A 6	1	
17	00 0236 169 0	HEXAGONAL NUT	M6	1	
18	00 0011 815 3	SWITCH	BERUEHRUNGSFREI	1	2)
19	00 0865 624 0	SUPPORT		1	
20	00 0237 442 0	HEXAGON HEAD BOLT	M8X25	4	
20	00 0239 387 0	CONTACT WASHER	A8-8,2X18X1,4	4	
20	00 0215 913 0	RIVETING NUT	M 8X20, 5-SW11-KL=3-5,5	4	
22	00 0238 064 0	PIN	B-10X 40	1	
23	00 0236 841 0	WASHER	13X22X1,5	2	
24	00 0235 089 0	SPLIT PIN	4 X 22	2	
25	00 0238 292 0	WASHER	10,5X 22 X1	2	
26	00 0235 083 0	SPLIT PIN	3,2X18	1	
27	00 0008 515 0	BUSHING	20 X 23 X21	2	
28	00 0855 024 0	ANGLE LEVER		1	
29	00 0234 318 0	WASHER	21X30X2	1	
30	00 0237 026 0	SPLIT PIN	5X32	1	
31	00 0242 443 0	HEXAGON HEAD BOLT	M 6X40	1	
31	00 0239 386 0	CONTACT WASHER	A 6	2	
31	00 0236 169 0	HEXAGONAL NUT	M6	2	

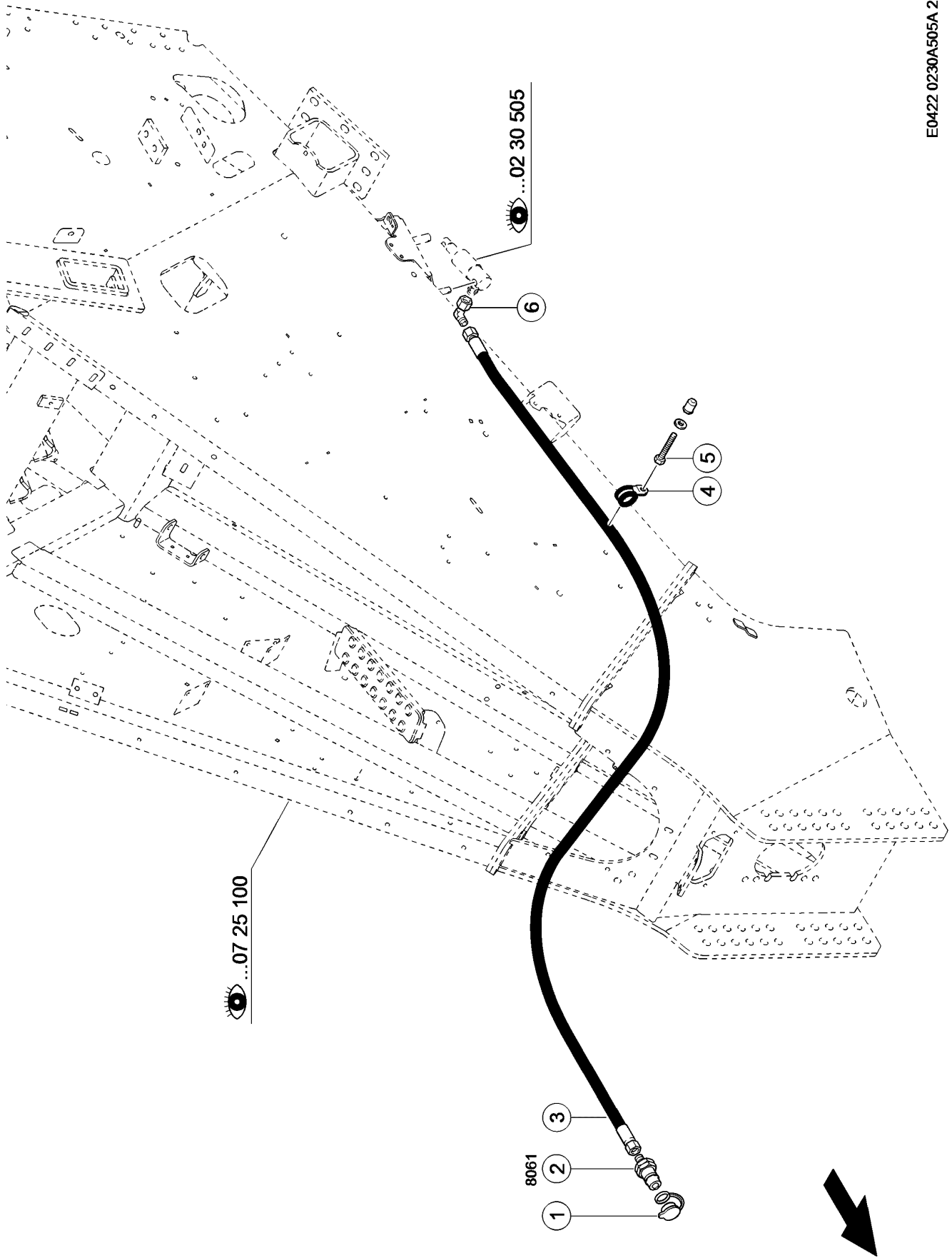
1) Equipment**Remarks**

PR_C03_0150

Flywheel brake, hydraulic
hydraulically**2) CCN**

CCN-B138

flywheel brake sensor



505 FLYWHEEL BRAKE 1)

Pos.	Part No.	Description	Dimension	Quantity	Conditions
1	00 0812 990 0	DUST CAP	DN 12,5	1	
2	00 0812 989 0	COUPLER PLUG	DN12,5 - L10(M16X1, 5) +	1	2)
3	00 0819 515 2	HOSE PIPE		1	
4	00 0812 991 0	HOLDER CLAMP	D1-15X20	1	
5	00 0236 213 0	HEXAGON HEAD BOLT	M8X35	1	
5	00 0239 387 0	CONTACT WASHER	A8-8,2X18X1,4	1	
5	00 0215 913 0	RIVETING NUT	M 8X20, 5-SW11-KL=3-5,5	1	
6	00 0238 693 0	ELBOW UNION	SWOE-L10	1	

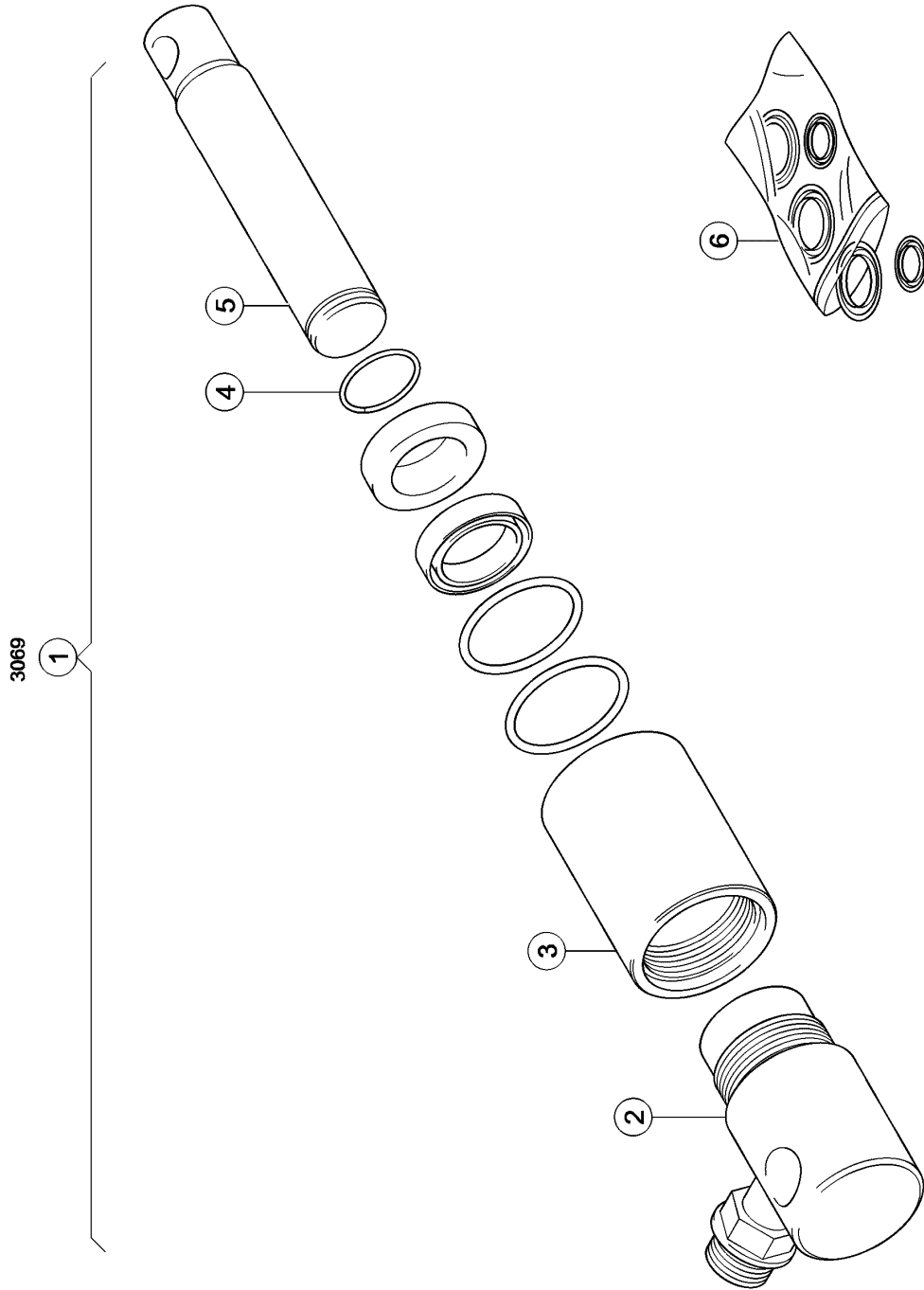
1) Equipment**Remarks**

PR_C03_0150

Flywheel brake, hydraulic
hydraulically**2) CCN**

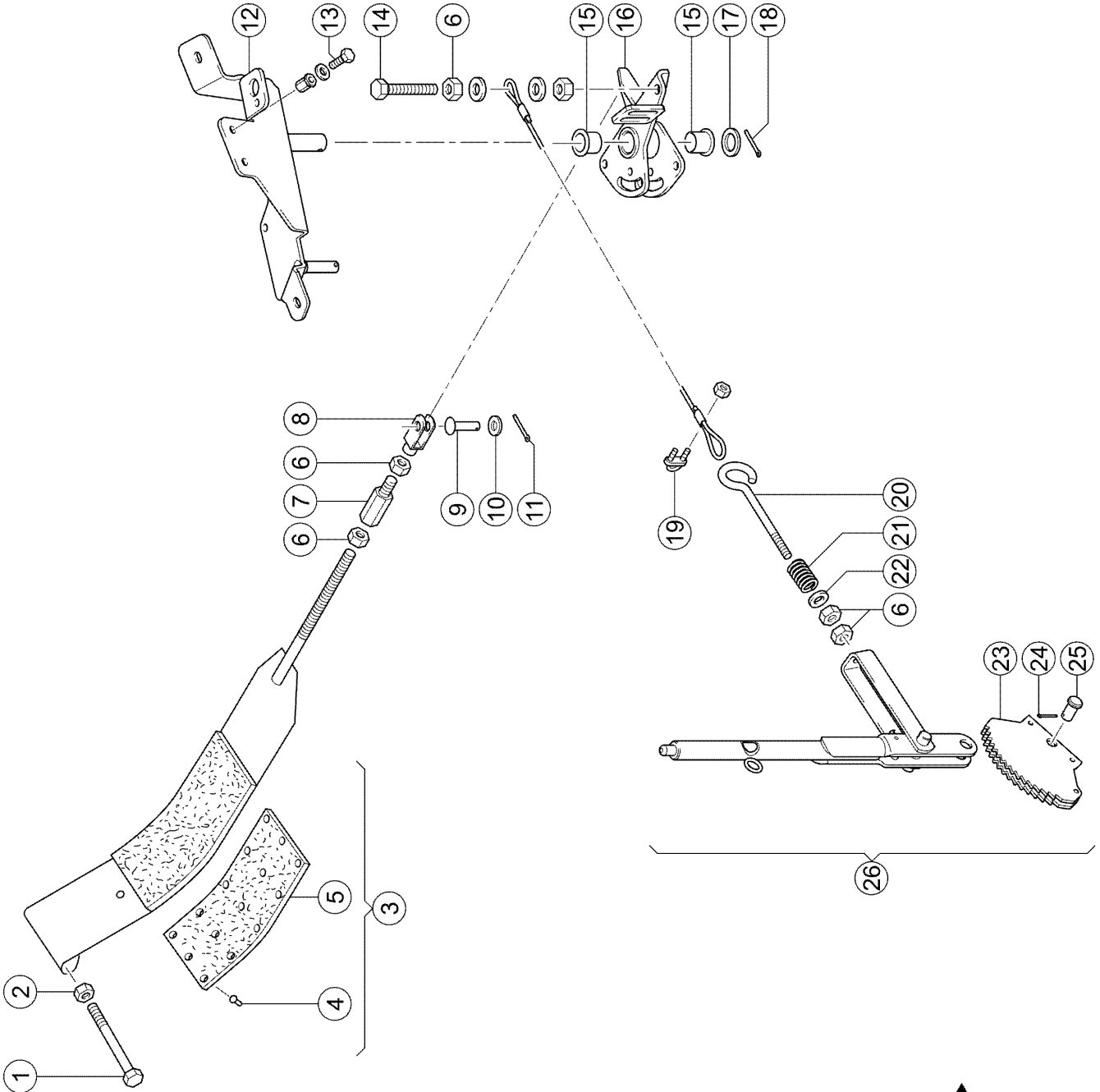
CCN-8061

Flywheel brake quick-release coupling



505 FLYWHEEL BRAKE 1)

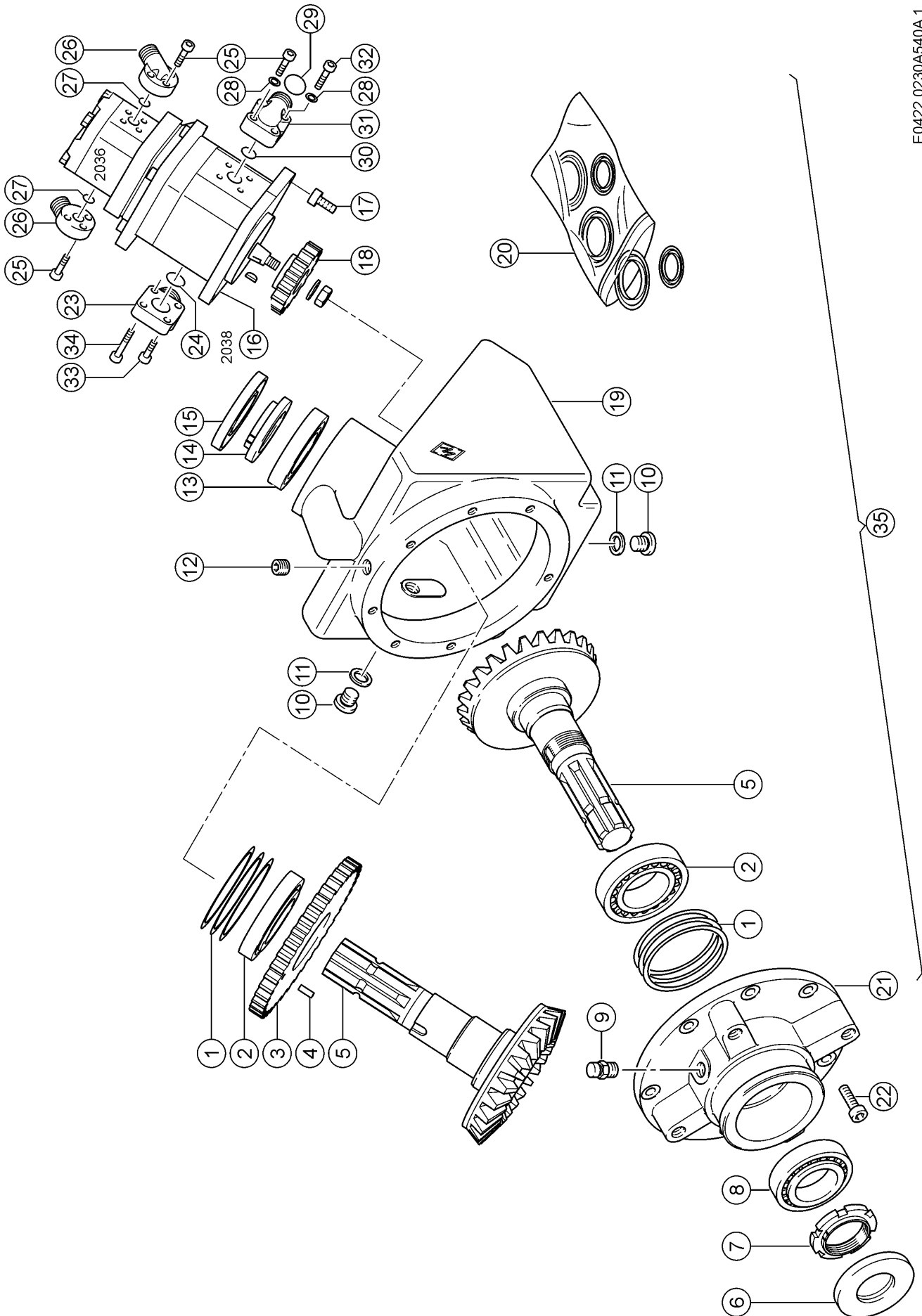
Pos.	Part No.	Description	Dimension	Quantity	Conditions
1	00 0855 126 0	HYDR. CYLINDER	20X25/120	1	2)
2	00 0841 910 0	CYLINDER		1	
3	00 0841 911 0	CYLINDER		1	
4	00 0841 942 0	SNAP RING		1	
5	00 0841 912 0	PISTON ROD		1	
6	00 0841 909 0	SEAL KIT		1	
1)	Equipment				
	Remarks	PR_C03_0150			Flywheel brake, hydraulic hydraulically
2)	CCN				
		CCN-3069			flywheel brake hydraulic cylinder



505 FLYWHEEL BRAKE 1)

Pos.	Part No.	Description	Dimension	Quantity	Conditions
1	00 0242 795 0	HEXAGON HEAD BOLT	M16X140	1	
2	00 0238 047 0	LOCK NUT	M16	1	
3	00 0832 241 3	BRAKE BAND		1	
4	00 0235 768 0	RIVET	A4X15	15	
5	00 0841 161 0	BRAKE BAND		1	
6	00 0236 171 0	HEXAGONAL NUT	M10	5	
7	00 0865 709 0	ADAPTER	HEX16 L=75	1	
8	00 0632 127 0	FORK HEAD	G 10X40	1	
9	00 0632 133 0	PIN	B-10A12X28X4,5	1	
10	00 0238 292 0	WASHER	10,5X 22 X1	2	
11	00 0235 089 0	SPLIT PIN	4 X 22	2	
12	00 1337 661 1	SUPPORT		1	
13	00 0237 442 0	HEXAGON HEAD BOLT	M8X25	4	
13	00 0239 387 0	CONTACT WASHER	A8-8,2X18X1,4	4	
13	00 0215 913 0	RIVETING NUT	M 8X20, 5-SW11-KL=3-5,5	4	
14	00 0235 218 1	HEXAGON HEAD BOLT	M10X40	1	
14	00 0239 394 1	CONTACT WASHER	B10	2	
14	00 0237 947 0	HEX. NUT WITH CLAMP. PART	M10	1	
15	00 0008 515 0	BUSHING	20 X 23 X21	2	
16	00 0855 024 0	ANGLE LEVER		1	
17	00 0234 318 0	WASHER	21X30X2	1	
18	00 0237 026 0	SPLIT PIN	5X32	1	
19	00 0509 212 0	WIRE ROPE CLAMP	A 5-M5X12X13X25	3	2)
19	00 0940 002 0	WIRE ROPE CLAMP	A 3 M4X9X12X20	2	3)
20	00 0751 026 0	EYE BOLT	M10X135	1	
21	00 0800 444 1	COMPRESS.SPRING	4,5 X 15 X 30	1	
22	00 0234 325 0	WASHER	11 X 21 X3	1	
23	00 0830 149 0	TOOTHED SEGMENT		1	
24	00 0236 152 0	SPLIT PIN	3,2X22	1	
25	00 0244 515 0	PIN	B12H11X 45	1	
26	00 0848 342 0	BRAKE LEVER		1	

1) Remarks	Standard
2) machine no.	+ from J3200043
3) machine no.	+ up to J3200042



E0422 0230A540A 1

Thank you so much for reading.
Please click the “Buy Now!”
button below to download the
complete manual.



After you pay.

You can download the most
perfect and complete manual in
the world immediately.

Our support email:

ebooklibonline@outlook.com