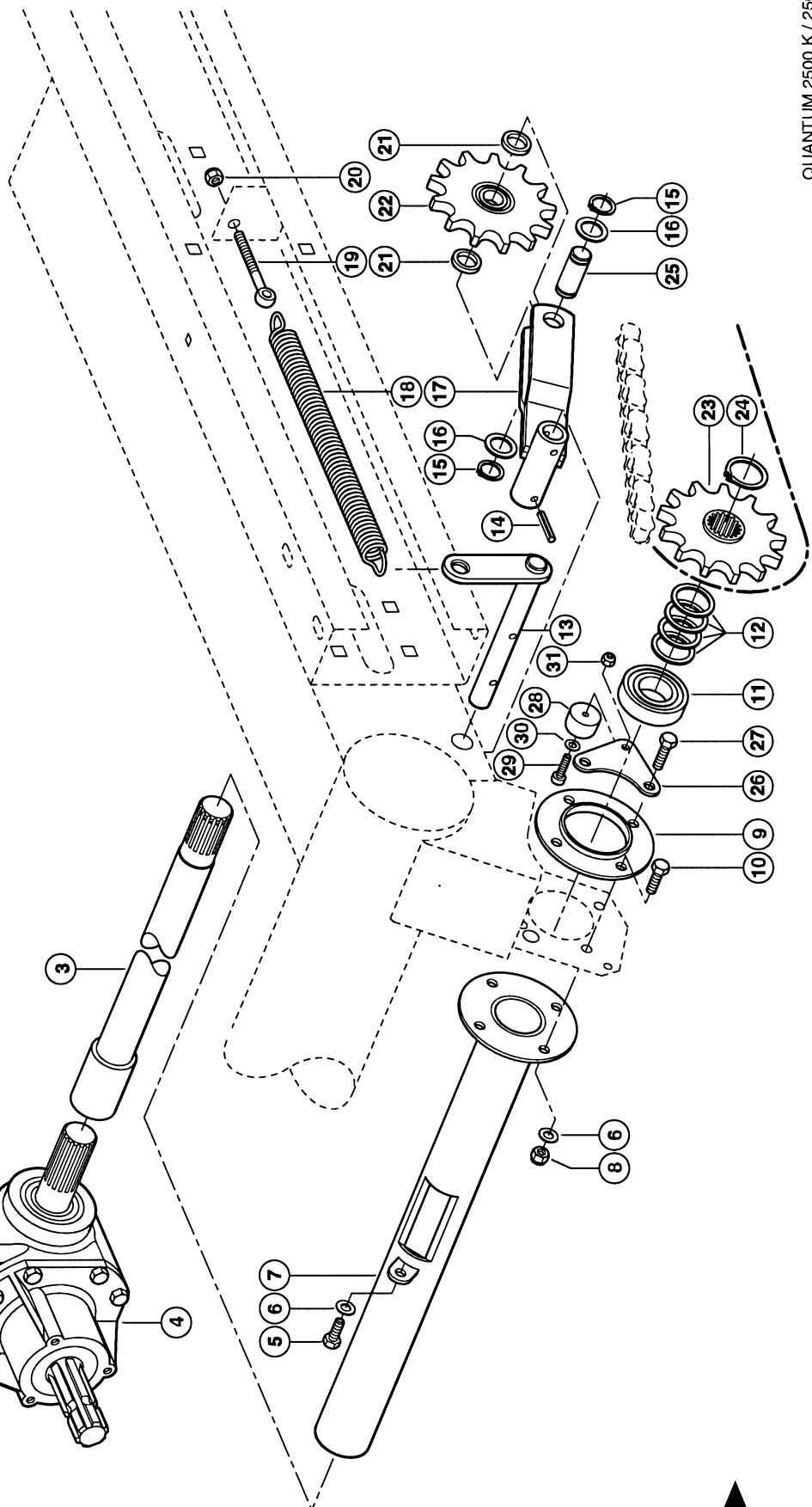
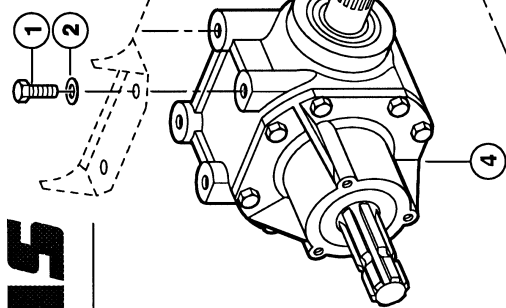


101



QUANTUM 2500 K / 2500 P

**CLAAS**



80087z01

**MAIN DRIVE**

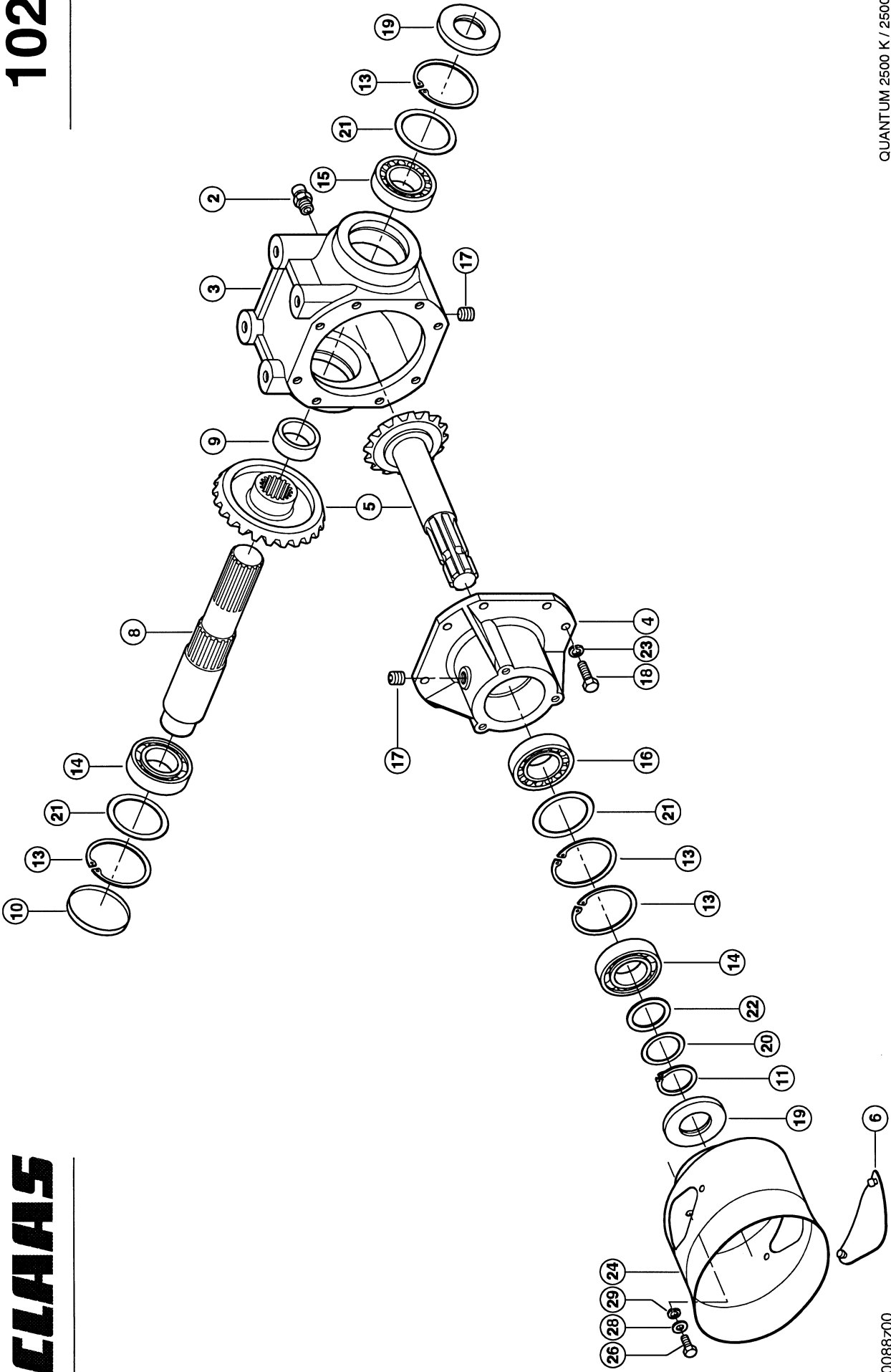
Pos.	Part No.	Description	Dimension	Quantity	Conditions
1	<b>00 0235 585 0</b>	HEXAGON HEAD BOLT	M16X45	4	
2	<b>00 0233 671 0</b>	CONICAL SPRING WASHER	16 -17X39X4	4	
3	<b>00 0973 651 0</b>	DRIVE SHAFT		1	
4	<b>00 0973 670 0</b>	ANGLE DRIVE		1	1)
5	<b>00 0902 398 0</b>	SCREW	M12X35 B=25	2	
6	<b>00 0235 124 3</b>	FLAT WASHER	12- 13X24X2,5	4	
7	<b>00 0973 713 0</b>	PROTECTIVE TUBE		1	
8	<b>00 0236 172 0</b>	HEXAGONAL NUT	M12	4	
9	<b>00 0920 547 0</b>	METAL FLANGE		1	
10	<b>00 0237 572 0</b>	HEXAGON HEAD BOLT	M12X35	2	
11	<b>00 0214 844 0</b>	TENSION BEARING	40X80X18	1	
12	<b>00 0238 281 0</b>	BACK-UP WASHER	S 40X50X2,5	5	
13	<b>00 0973 657 0</b>	CLAMPING LEVER		1	
14	<b>00 0235 680 3</b>	SPRING PIN	8 X 40	2	
15	<b>00 0235 160 0</b>	CIRCLIP	25X1,2	1	
16	<b>00 0238 386 0</b>	BACK-UP WASHER	S 25X35X2	1	
17	<b>00 0973 677 0</b>	CHAIN TENSIONER		1	
18	<b>00 0920 546 0</b>	TENSION SPRING		1	
19	<b>00 0973 666 0</b>	EYE BOLT		1	
20	<b>00 0236 172 0</b>	HEXAGONAL NUT	M12	1	
21	<b>00 0920 541 0</b>	SPACER RING		2	
22	<b>00 0920 538 0</b>	SPROCKET	Z=13	1	
23	<b>00 0973 654 0</b>	SPROCKET		1	
24	<b>00 0235 166 0</b>	CIRCLIP	40X1,75	1	
25	<b>00 0920 540 0</b>	PIN		1	
26	<b>00 0973 834 0</b>	STOP PLATE		1	2)
27	<b>00 0237 462 0</b>	HEXAGON HEAD BOLT	M12X40	2	
28	<b>00 0920 462 0</b>	RUBBER PAD		1	2)
29	<b>00 0218 601 0</b>	HEX. SOCKET CHEESE-HEAD SCREW	M8X35	1	
30	<b>00 0236 912 2</b>	FLAT WASHER	8 - 8,4X16X1,6	1	
31	<b>00 0238 132 0</b>	LOCK NUT	M8	1	

**1) Remarks** single parts plate 102

**2) Remarks** From 613 0 2254

102

**CLAAS**



QUANTUM 2500 K / 2500 P

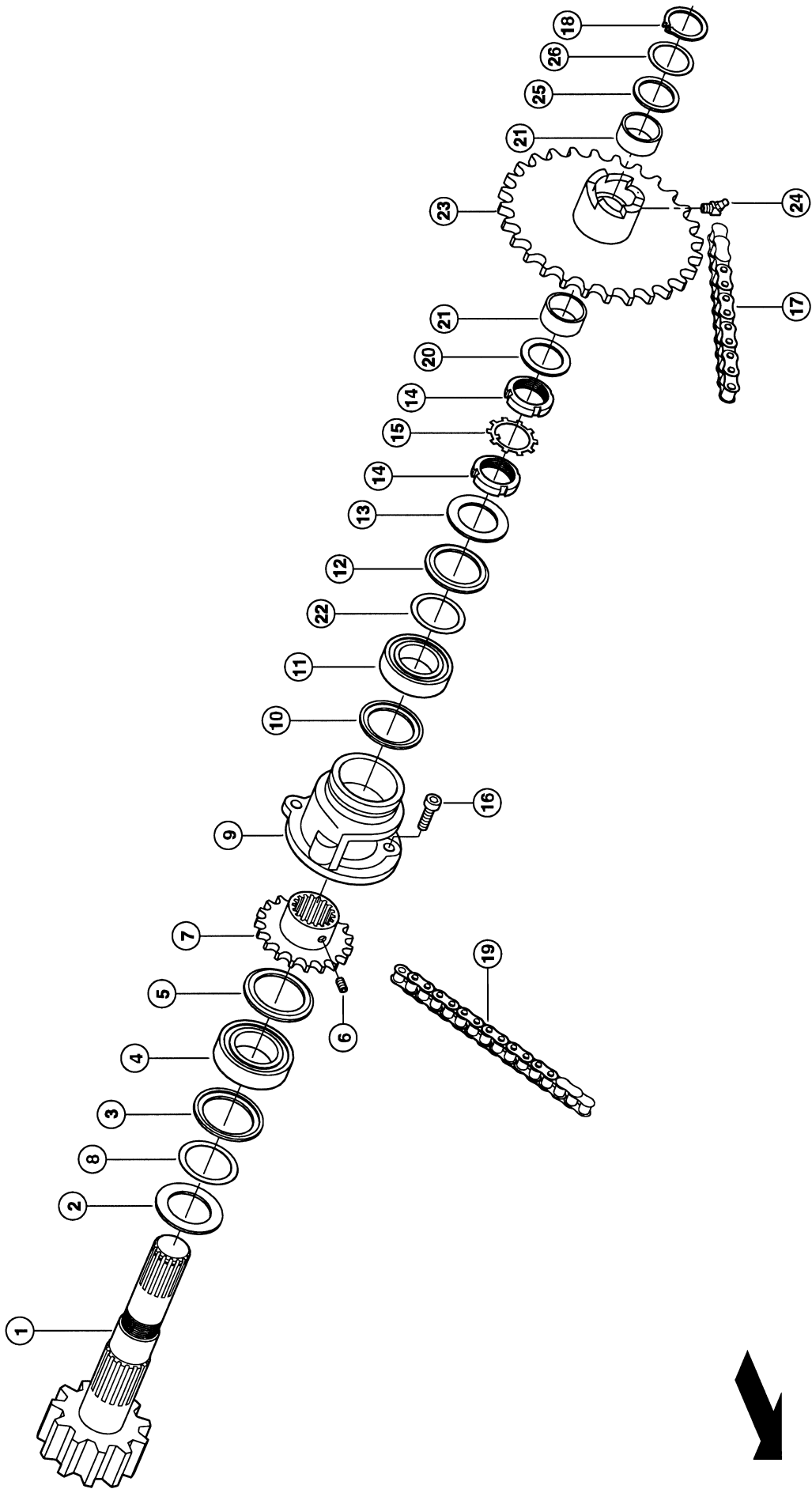
80088z00

**GEARBOX MAINDRIVE**

<b>Pos.</b>	<b>Part No.</b>	<b>Description</b>	<b>Dimension</b>	<b>Quantity</b>	<b>Conditions</b>
	<b>00 0973 670 0</b>	ANGLE DRIVE		1	
2	<b>00 0920 554 0</b>	BREATHER VALVE		1	
3	<b>00 0920 645 0</b>	HOUSING		1	
4	<b>00 0920 646 0</b>	FLANGE		1	
5	<b>00 0920 649 0</b>	BEVEL GEAR SET		1	
6	<b>00 0920 623 0</b>	PROTECTIVE COVER		2	
8	<b>00 0920 624 0</b>	DRIVE SHAFT		1	
9	<b>00 0920 627 0</b>	BUSHING		1	
10	<b>00 0920 030 0</b>	LOCKING COVER	80X8	1	
11	<b>00 0244 058 0</b>	CIRCLIP	40X2,5	2	
13	<b>00 0237 863 0</b>	CIRCLIP	80X2,5	4	
14	<b>00 0235 918 0</b>	GRVD.BALL BEARING	6208 -40X80X18	2	
15	<b>00 0235 988 0</b>	TA.ROLLER BEARING	30208- 40X80X19,75	1	
16	<b>00 0243 671 0</b>	TA.ROLLER BEARING	32208- 40X80X24,75	1	
17	<b>00 0244 861 0</b>	SCREW PLUG	A-M16X1,5	3	
18	<b>00 0237 453 0</b>	HEXAGON HEAD BOLT	M10X30	8	
19	<b>00 0212 112 0</b>	SHAFT SEAL	A 40X80X10	2	
20	<b>00 0237 909 0</b>	SHIM	40X50X0,1	1	
20	<b>00 0237 910 0</b>	SHIM	40X50X0,3	1	
20	<b>00 0234 421 0</b>	SHIM	40X50X0,5	1	
21	<b>00 0234 435 0</b>	SHIM	63X80X1	1	
22	<b>00 0238 281 0</b>	BACK-UP WASHER	S 40X50X2,5	1	
23	<b>00 0235 133 1</b>	SPRING WASHER	10 -10,2X18,1X1,8	8	
24	<b>00 0920 630 0</b>	GUARD CUP		1	
26	<b>00 0233 390 0</b>	HEXAGON HEAD BOLT	M08X16-MKL	3	
28	<b>00 0236 912 2</b>	FLAT WASHER	8 - 8,4X16X1,6	3	
29	<b>00 0235 132 1</b>	SPRING WASHER	8 -8,1X14,8X1,6	3	

103

**CLAAS**



QUANTUM 2500 K / 2500 P



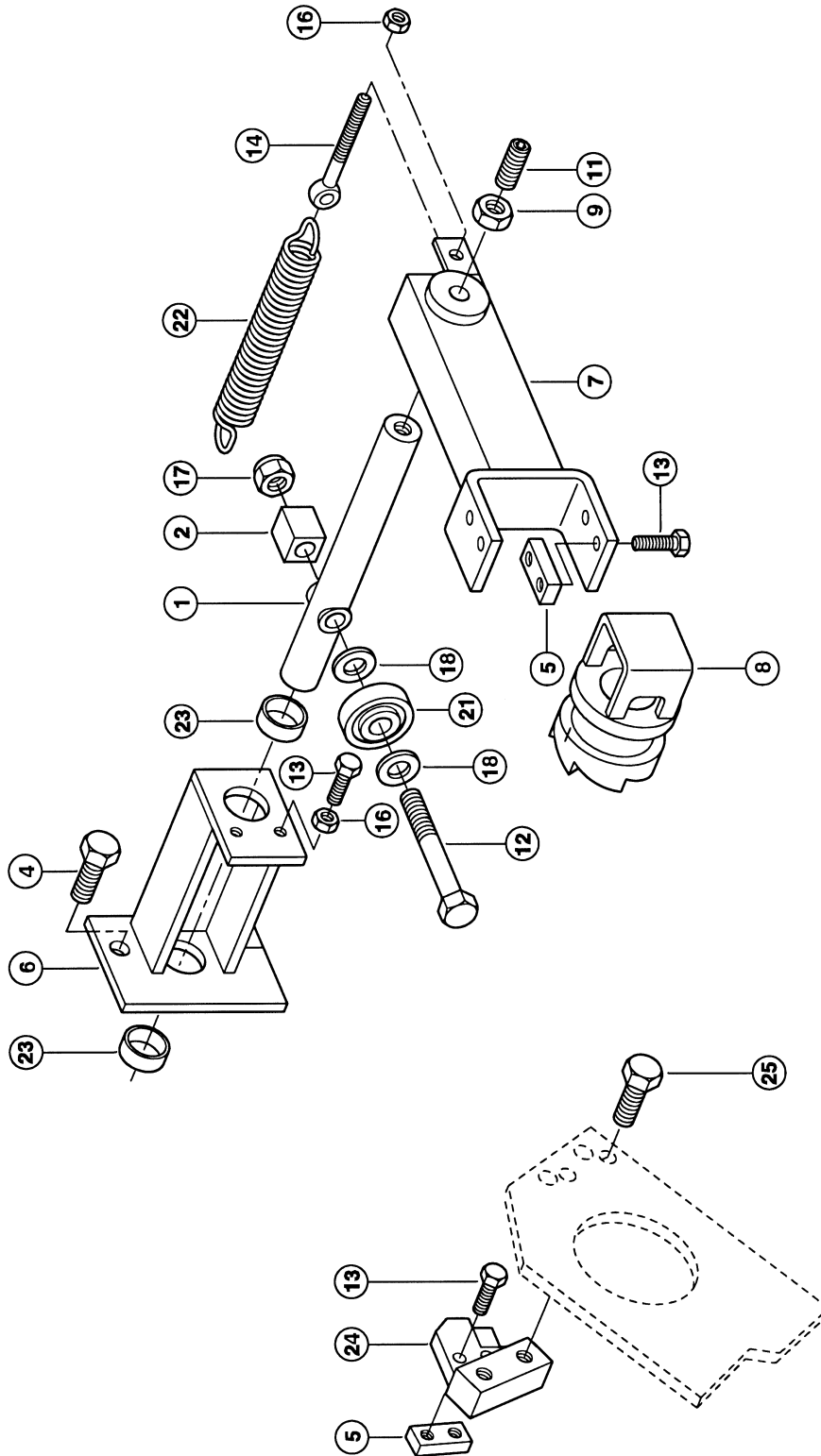
80089Z00

**CONVEYOR SYSTEM - DRIVE**

<b>Pos.</b>	<b>Part No.</b>	<b>Description</b>	<b>Dimension</b>	<b>Quantity</b>	<b>Conditions</b>
1	<b>00 0920 650 0</b>	PINION SHAFT		1	
2	<b>00 0920 652 0</b>	SEALING WASHER		1	
3	<b>00 0214 597 0</b>	BEARING SEAL RING	30212 AV	1	
4	<b>00 0243 661 0</b>	TA.ROLLER BEARING	30212A	1	
5	<b>00 0214 596 0</b>	BEARING SEAL RING	30212 JV	1	
6	<b>00 0233 604 0</b>	THREADED PIN	M10X16	1	
7	<b>00 0920 653 0</b>	SPROCKET	Z=19	1	
8	<b>00 0211 975 0</b>	SHIM	60X75X1	1	
9	<b>00 0920 655 0</b>	BEARING HOUSING		1	
10	<b>00 0214 594 0</b>	BEARING SEAL RING	30210 JV	1	
11	<b>00 0235 989 0</b>	TA.ROLLER BEARING	30210 - 50X90X21,75	1	
12	<b>00 0214 595 0</b>	BEARING SEAL RING	30210 AV	1	
13	<b>00 0920 664 0</b>	SEALING WASHER		1	
14	<b>00 0214 593 0</b>	SLOTTED NUT	M48X1,5	2	
15	<b>00 0920 666 0</b>	LOCKING PLATE		1	
16	<b>00 0214 367 0</b>	SOCKET HEAD SCREW	M16X 40	4	
17	<b>00 0973 669 0</b>	ROLLER CHAIN		1	
18	<b>00 0234 452 0</b>	CIRCLIP	45X2,5	1	
19	<b>00 0973 723 0</b>	ROLLER CHAIN		1	
20	<b>00 0673 426 0</b>	PRESSURE DISC	AS 4565 ERS.D. 770002268	1	
21	<b>00 0920 708 0</b>	BUSHING		2	
22	<b>00 0214 498 0</b>	SHIM	50X 62X1	1	
23	<b>00 0920 709 0</b>	CLUTCH HUB		1	
24	<b>00 0244 948 0</b>	GREASE NIPPLE	C M8X1	1	
25	<b>00 0920 723 0</b>	RING		1	
26	<b>00 0958 003 6</b>	SHIM	45X55X1,0	1	
26	<b>00 0234 423 0</b>	SHIM	45X55X0,5	1	

104

**CLAAS**



QUANTUM 2500 K / 2500 P



80090Z01

**CONVEYOR SYSTEM - DRIVE**

<b>Pos.</b>	<b>Part No.</b>	<b>Description</b>	<b>Dimension</b>	<b>Quantity</b>	<b>Conditions</b>
1	<b>00 0920 729 0</b>	PIN		1	
2	<b>00 0920 732 0</b>	GUIDE		1	
4	<b>00 0237 461 0</b>	HEXAGON HEAD BOLT	M12X30	2	
5	<b>00 0920 733 0</b>	ANTIFRICTION PLATE		3	
6	<b>00 0920 752 0</b>	SUPPORT		1	
7	<b>00 0920 902 0</b>	LEVER		1	
8	<b>00 0138 028 0</b>	CLAW		1	
9	<b>00 0236 172 0</b>	HEXAGONAL NUT	M12	1	
11	<b>00 0242 736 0</b>	THREADED PIN	M12X30	1	
12	<b>00 0237 820 0</b>	HEXAGON HEAD BOLT	M12X90	1	
13	<b>00 0237 442 0</b>	HEXAGON HEAD BOLT	M8X25	8	
14	<b>00 0216 026 0</b>	EYE BOLT	BM 8X50X30 ERS.D.21602	2	
16	<b>00 0236 170 0</b>	HEXAGONAL NUT	M8	3	
17	<b>00 0238 234 0</b>	LOCK NUT	M12	1	
18	<b>00 0235 124 3</b>	FLAT WASHER	12- 13X24X2,5	3	
21	<b>00 0138 029 0</b>	GUIDE ROLLER		2	
22	<b>00 0920 467 0</b>	TENSION SPRING		1	
23	<b>00 0138 031 0</b>	BUSHING		1	
24	<b>00 0973 778 0</b>	THRUST BEARING		1	1)
25	<b>00 0239 049 0</b>	HEXAGON HEAD BOLT	M12X30-MKL	2	

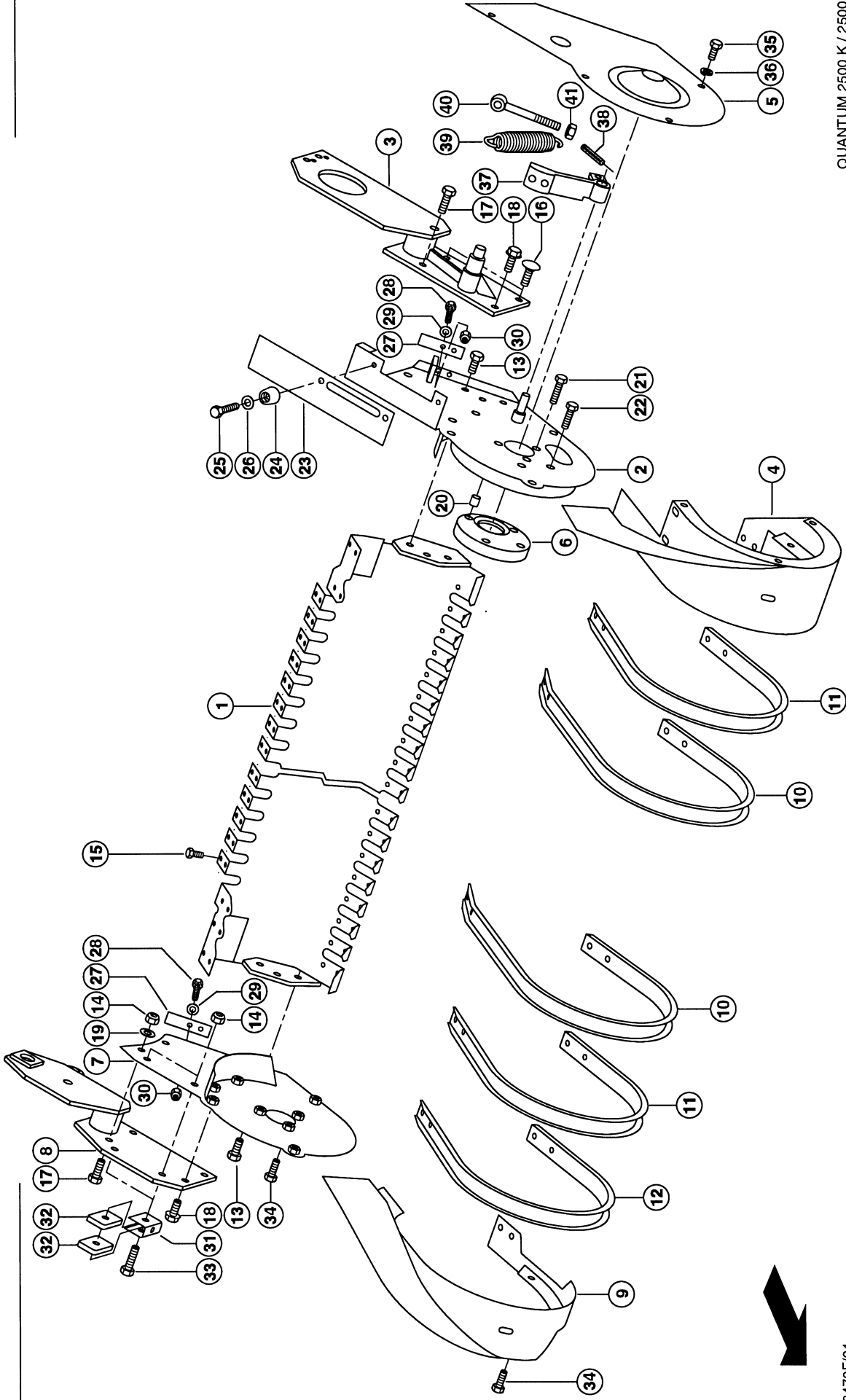
**1) Remarks**

From 613 0 2254



# 105

# CLAAS



QUANTUM 2500 K / 2500 P

93470F/01

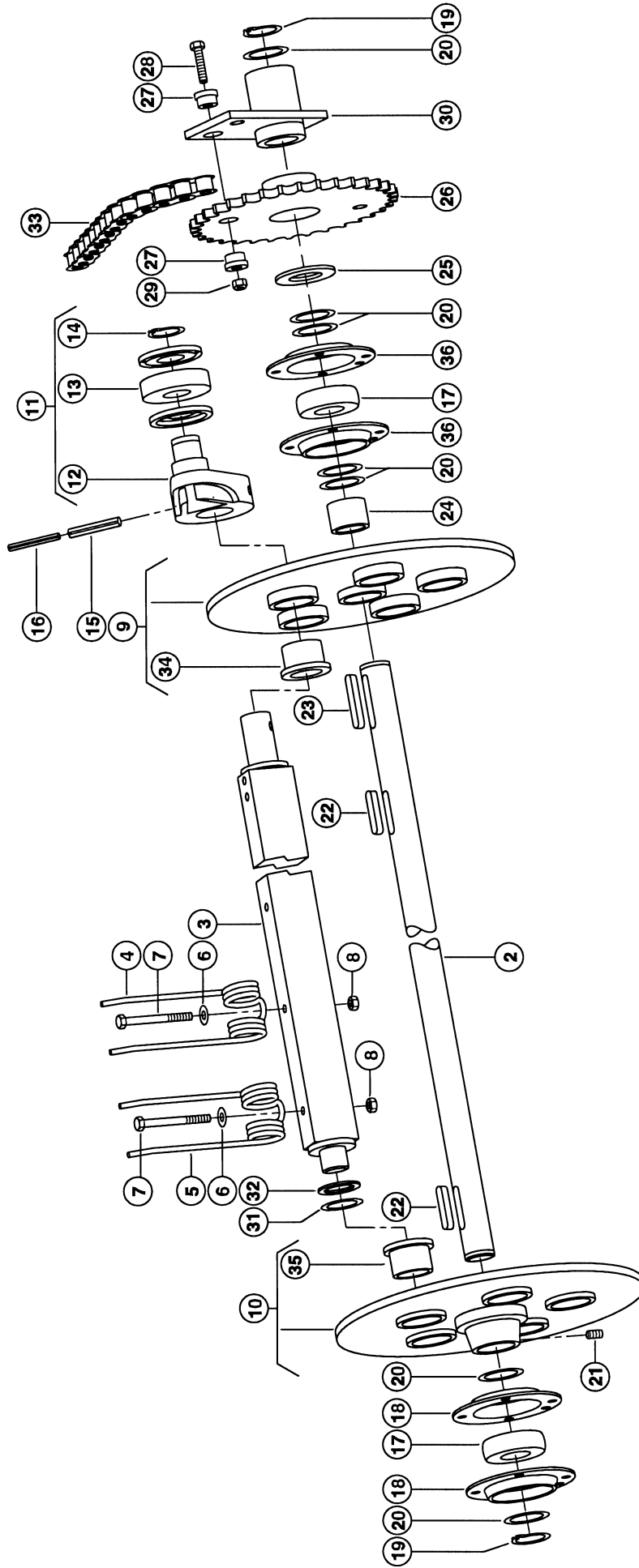


**PICK-UP - SUPPORT**

Pos.	Part No.	Description	Dimension	Quantity	Conditions
1	<b>00 0138 455 0</b>	PICK-UP SUPPORT		1	1)
1	<b>00 0920 448 0</b>	PICK-UP SUPPORT		1	2)
2	<b>00 0920 449 0</b>	SIDE PART L.H.		1	
3	<b>00 0920 450 1</b>	SUPPORT L.H.		1	
4	<b>00 0920 451 0</b>	COVER L.H.		1	
5	<b>00 0920 452 0</b>	GUARD PLATE		1	
6	<b>00 0920 453 0</b>	FACE CAM		1	
7	<b>00 0920 454 0</b>	SIDE PART R.H.		1	
8	<b>00 0920 456 0</b>	SUPPORT R.H.		1	
9	<b>00 0138 030 0</b>	COVERING	RECHTS	1	1)
9	<b>00 0920 457 0</b>	COVER R.H.		1	2)
10	<b>00 0920 458 0</b>	STRIPPING PLATE		24	
11	<b>00 0920 459 0</b>	STRIPPING PLATE	KURZ	2	
12	<b>00 0920 460 0</b>	STRIPPING PLATE	AUSSEN	1	
13	<b>00 0237 383 0</b>	HEXAGON HEAD BOLT	M10X25	6	
14	<b>00 0237 947 0</b>	HEX. NUT WITH CLAMP. PART	M10	4	
15	<b>00 0214 592 0</b>	SELF LOCK. SCREW	M 6X10 - VERBUS RIPP114		
16	<b>00 0801 888 1</b>	COACH BOLT	M10X30	2	
17	<b>00 0235 530 0</b>	HEX.HEAD BOLT	M10X30	3	
18	<b>00 0215 521 0</b>	HEXAGON HEAD BOLT	M10X25-MKL	3	
19	<b>00 0239 181 0</b>	WASHER	10,5 -10,5X25X4	4	
20	<b>00 0211 189 0</b>	SPRING PIN	10X 10	3	
21	<b>00 0237 444 0</b>	HEXAGON HEAD BOLT	M8-45	3	
22	<b>00 0233 870 0</b>	HEXAGON HEAD SCREW	M08X30-MKL ERS.D.0233870	2	
23	<b>00 0920 461 0</b>	GUIDE SLOT		1	
24	<b>00 0920 462 0</b>	RUBBER PAD		2	
25	<b>00 0218 601 0</b>	HEX. SOCKET CHEESE-HEAD SCREW	M8X35	2	
26	<b>00 0213 717 0</b>	WASHER	8 -8,4X16X1,6	2	
27	<b>00 0920 463 0</b>	RUBBER PLATE		2	
28	<b>00 0237 466 0</b>	HEXAGON HEAD BOLT	M06X20	4	
29	<b>00 0236 911 2</b>	FLAT WASHER	6 -6,4X12X1,6	4	
30	<b>00 0237 983 0</b>	HEXAGONAL NUT	M6	4	
31	<b>00 0920 464 0</b>	BRACKET		2	
32	<b>00 0920 465 0</b>	STOP	GUMMI	4	
33	<b>00 0235 533 0</b>	HEX.HEAD BOLT	M10X45	2	
34	<b>00 0233 259 0</b>	HEXAGON HEAD BOLT	M08X20-MKL	9	
35	<b>00 0215 693 0</b>	HEXAGON HEAD BOLT	M08X16	4	
36	<b>00 0239 387 0</b>	CONTACT WASHER	A8-8,2X18X1,4	4	
37	<b>00 0920 466 0</b>	CHAIN TENSION.ASS		1	
38	<b>00 0244 569 0</b>	SPRING PIN	5 X 32	1	
39	<b>00 0920 467 0</b>	TENSION SPRING		1	
40	<b>00 0216 026 0</b>	EYE BOLT	BM 8X50X30 ERS.D.21602	1	
41	<b>00 0236 170 0</b>	HEXAGONAL NUT	M8	2	
<b>1)</b>	<b>Remarks</b>	From 613 0 2254			
<b>2)</b>	<b>Remarks</b>	Bis 613 0 2253			

106

CLAAS



QUANTUM 2500 K / 2500 P

93472C/01

**PICK-UP - SHAFT - SPRING TINES**

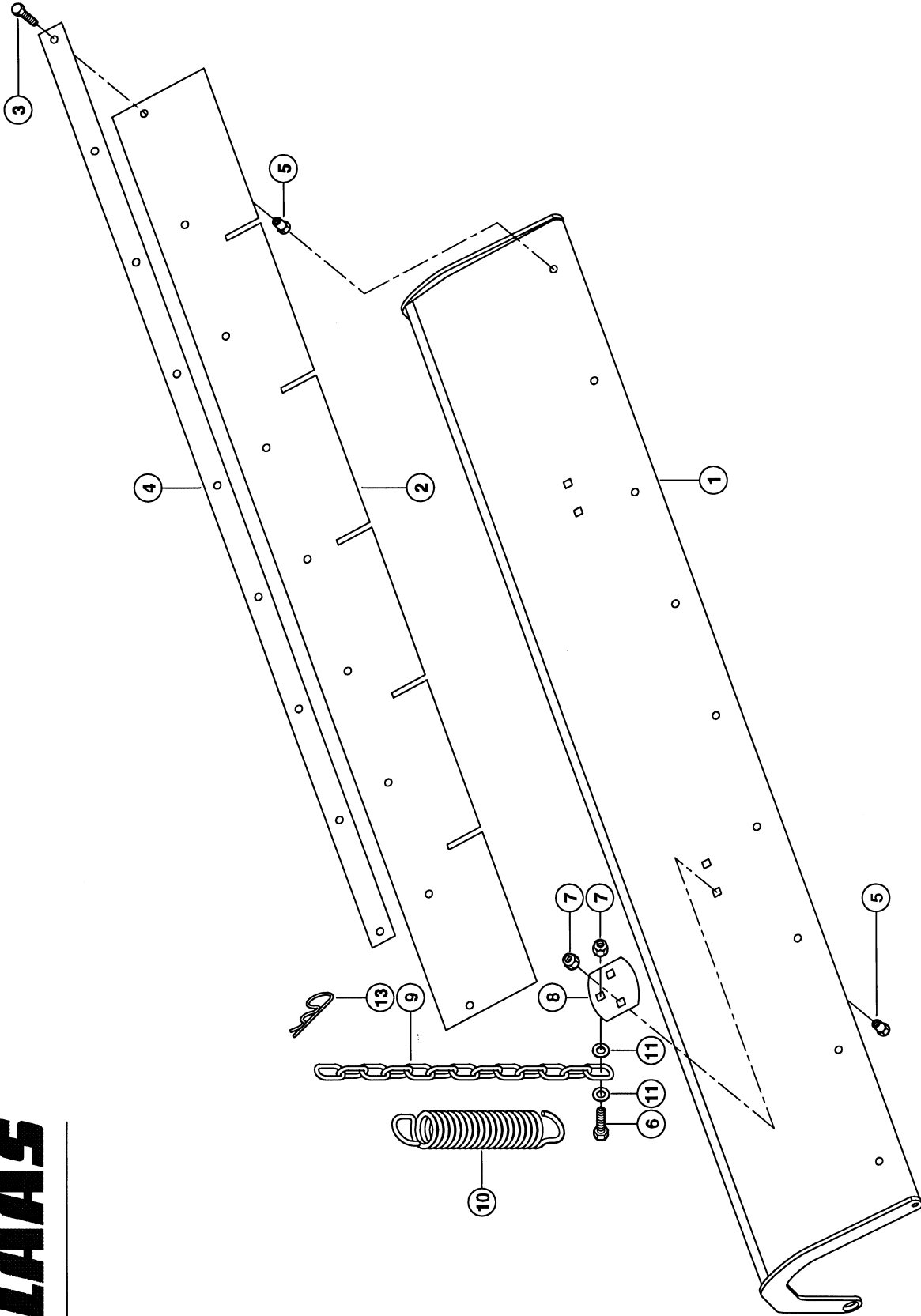
Pos.	Part No.	Description	Dimension	Quantity	Conditions
2	<b>00 0920 412 0</b>	DRIVE SHAFT		1	
3	<b>00 0920 413 0</b>	TINE SUPPORT		5	
4	<b>00 0920 414 0</b>	TINE		65	
5	<b>00 0973 828 0</b>	TINE		5	1)
5	<b>00 0920 416 0</b>	TINE		5	2)
6	<b>00 0236 912 2</b>	FLAT WASHER	8 - 8,4X16X1,6	70	
7	<b>00 0237 870 0</b>	HEXAGON HEAD BOLT	M8X75	70	
8	<b>00 0236 170 0</b>	HEXAGONAL NUT	M8	70	
9	<b>00 0920 417 0</b>	FLANGE L.H.		1	
10	<b>00 0920 418 0</b>	FLANGE R.H.		1	
11	<b>00 0920 419 0</b>	CONTROL LEVER		5	
12	<b>00 0920 420 0</b>	CONTROL LEVER		5	
13	<b>00 0920 421 0</b>	GUIDE ROLLER		5	
14	<b>00 0235 156 0</b>	CIRCLIP	17X1	5	
15	<b>00 0244 579 0</b>	SPRING PIN	10X65	5	
16	<b>00 0237 607 0</b>	SPRING PIN	6 X 65	5	
17	<b>00 0214 591 0</b>	Y-BEARING	30X62X16	2	
18	<b>00 0920 422 0</b>	METAL FLANGE	2-TEILIG	1	
19	<b>00 0235 163 0</b>	CIRCLIP	30X1,5	2	
20	<b>00 0233 124 1</b>	SHIM	30X42X1	15	
21	<b>00 0213 328 0</b>	THREADED PIN	M10X12-MKL CN040106	2	
22	<b>00 0244 767 0</b>	PARALLEL KEY	A 8X 7X 45	2	
23	<b>00 0234 902 0</b>	PARALLEL KEY	A 8X 7X 60	1	
24	<b>00 0920 423 0</b>	SPACER BUSH		1	
25	<b>00 0237 590 2</b>	WASHER	30	1	
26	<b>00 0920 424 0</b>	SPROCKET ASSY.	Z=32	1	
27	<b>00 0920 425 0</b>	SHEAR BUSHING		2	
28	<b>00 0237 339 0</b>	HEXAGON HEAD BOLT	M08X35	1	
29	<b>00 0238 132 0</b>	LOCK NUT	M8	1	
30	<b>00 0920 426 0</b>	HUB		1	
31	<b>00 0234 235 0</b>	WASHER	26X37X1	5	
32	<b>00 0234 298 0</b>	WASHER	26X37X2	5	
33	<b>00 0973 723 0</b>	ROLLER CHAIN		1	
34	<b>00 0920 428 0</b>	BUSHING		5	
35	<b>00 0920 429 0</b>	BUSHING		5	
36	<b>00 0138 434 0</b>	BEARING HOUSING		1	

**1) Remarks** From 613 0 2254

**2) Remarks** Bis 613 0 2253

107

CLAAS



QUANTUM 2500 K / 2500 P

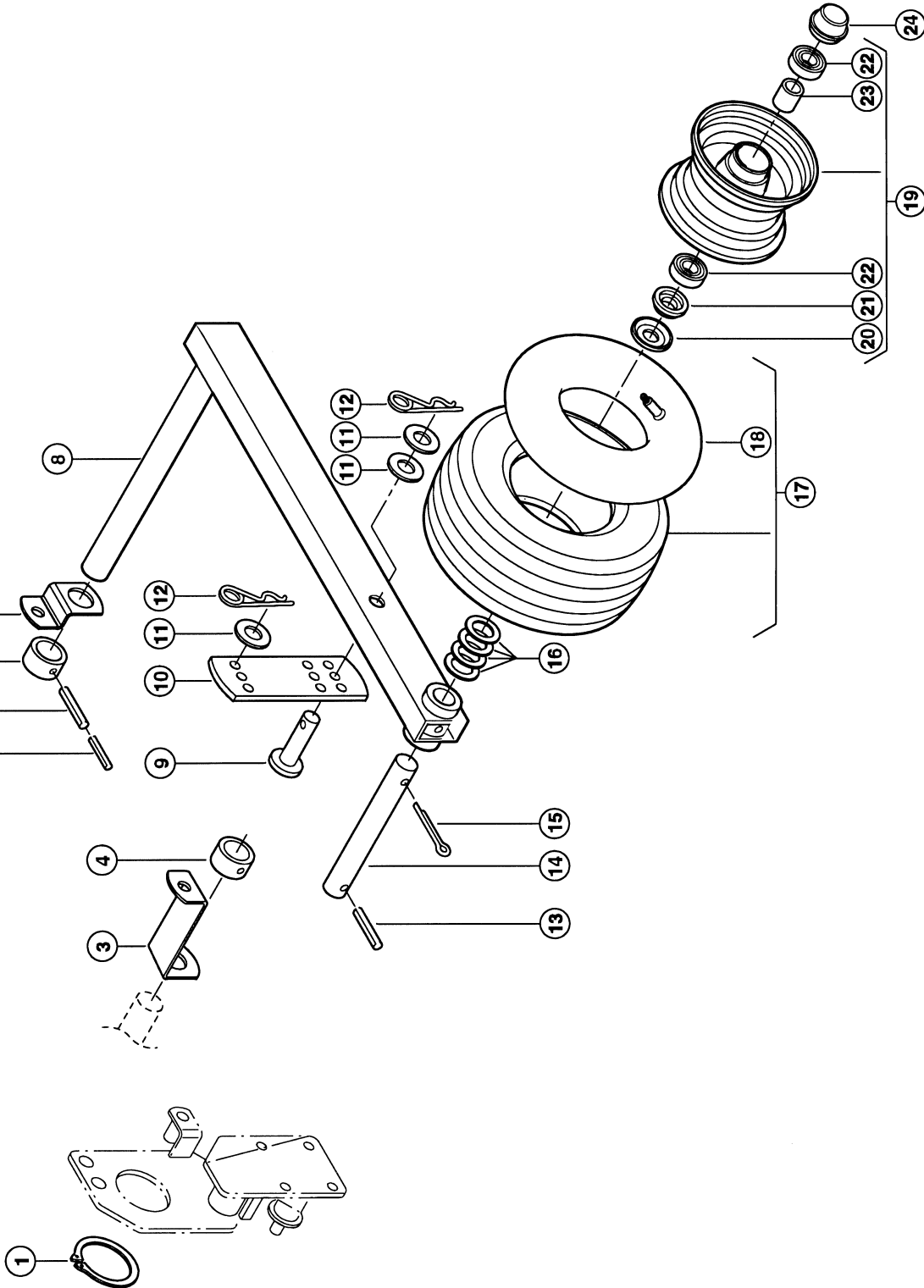
98473F

**BAFFLE PLATE**

<b>Pos.</b>	<b>Part No.</b>	<b>Description</b>	<b>Dimension</b>	<b>Quantity</b>	<b>Conditions</b>
1	<b>00 0920 440 0</b>	BAFFLE PLATE		1	
2	<b>00 0920 441 0</b>	RUBBER BAR		1	
3	<b>00 0238 923 1</b>	COACH BOLT	M 6X25	9	
4	<b>00 0920 442 0</b>	LEDGE		1	
5	<b>00 0216 340 0</b>	BLIND RIVET.NUT	M6 SW9X16,0 GRIP LENGTH	9	
6	<b>00 0236 442 0</b>	COACH BOLT	M 8X 30	2	
7	<b>00 0238 132 0</b>	LOCK NUT	M8	6	
8	<b>00 0920 443 0</b>	SUPPORT		2	
9	<b>00 0920 444 0</b>	CHAIN		2	
10	<b>00 0920 446 0</b>	TENSION SPRING	3,5X18,5X173	2	
11	<b>00 0239 181 0</b>	WASHER	10,5 -10,5X25X4	4	
12	<b>00 0234 953 0</b>	COACH BOLT	M8X20X13	4	
13	<b>00 0920 447 0</b>	SPRING CLIP		2	

108

**CLAAS**



QUANTUM 2500 K / 2500 P



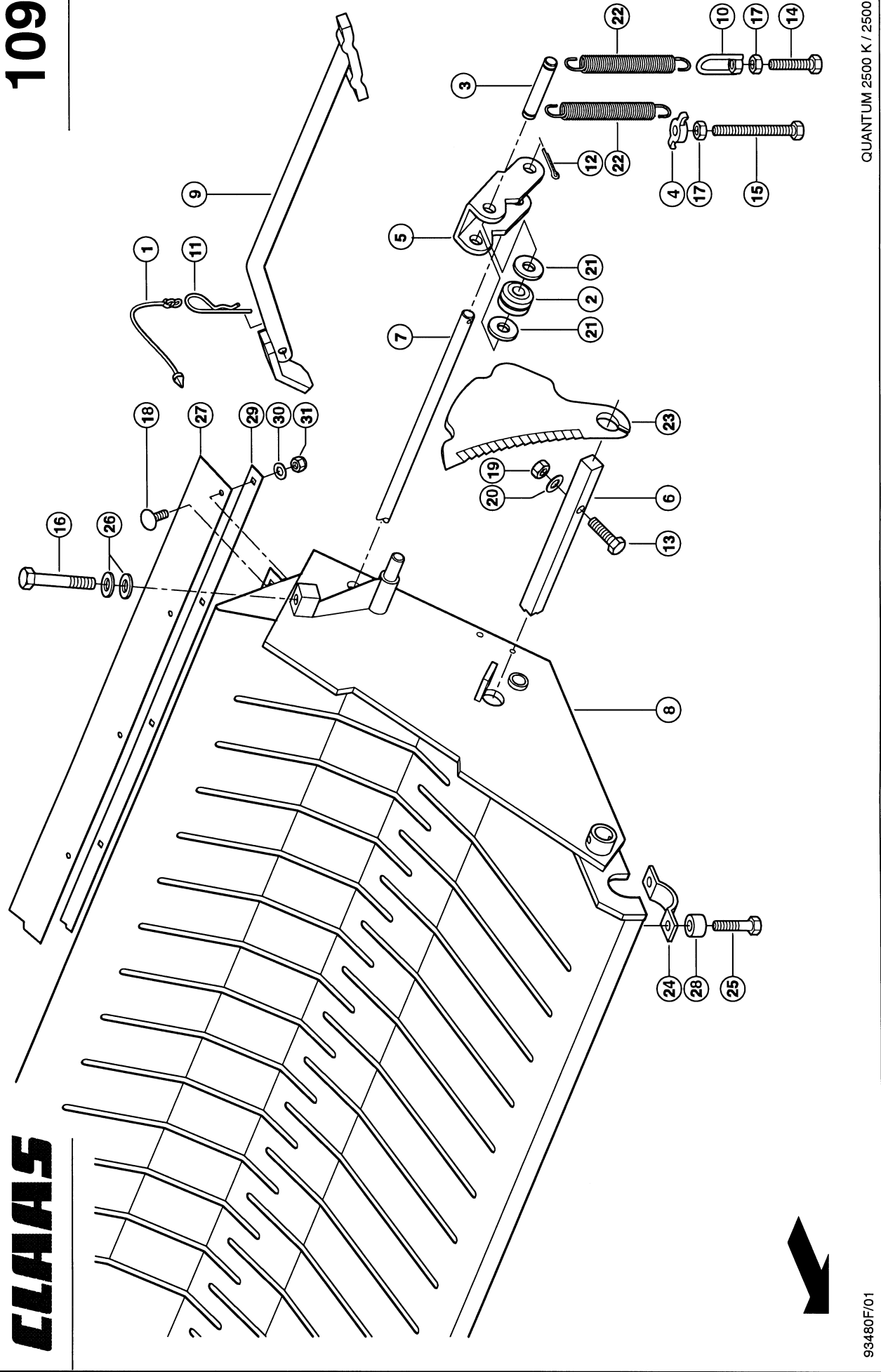
93469F

**PICK-UP - TRAILING WHEELS**

<b>Pos.</b>	<b>Part No.</b>	<b>Description</b>	<b>Dimension</b>	<b>Quantity</b>	<b>Conditions</b>
1	<b>00 0243 050 0</b>	CIRCLIP	105X4	1	
3	<b>00 0920 474 0</b>	SUPPORT		1	
4	<b>00 0920 471 0</b>	RING		2	
5	<b>00 0235 654 1</b>	SPRING PIN	5 X 60	2	
6	<b>00 0235 682 2</b>	SPRING PIN	8 X 60	2	
7	<b>00 0920 473 0</b>	SUPPORT	RECHTS	1	
8	<b>00 0973 762 0</b>	CONTROL ARM		2	
9	<b>00 0233 069 1</b>	PIN	B-16X 65X58	2	
10	<b>00 0973 763 0</b>	STRAP L.H.		2	
10	<b>00 0973 764 0</b>	STRAP R.H.		1	
11	<b>00 0235 127 2</b>	WASHER	16 - 17X30X3	5	
12	<b>00 0920 447 0</b>	SPRING CLIP		4	
13	<b>00 0235 665 2</b>	SPRING PIN	6 X 36 -ST	2	
14	<b>00 0920 469 0</b>	PIN		2	
15	<b>00 0237 033 0</b>	SPLIT PIN	6,3X 40	2	
16	<b>00 0234 170 0</b>	BACK-UP WASHER	S 26X42X2	10	
17	<b>00 0983 706 0</b>	TYRE WITH TUBE	16X6,50-8 6PR C737	2	
18	<b>00 0919 265 0</b>	HOSE	16/6,50-8	2	
19	<b>00 0919 264 1</b>	WHEEL RIM	5.50 A X 8	2	
20	<b>00 0954 034 0</b>	GUARD CAP	D62X1,13X 20	2	
21	<b>00 0902 722 1</b>	SEALING RING	D 25X 48X 13,5	4	
22	<b>00 0235 870 0</b>	GRVD.BALL BEARING	6205-2RS*-25X52X15	4	
23	<b>00 0919 191 0</b>	SPACER BUSH	D 27 X 30 X 35	2	
24	<b>00 0902 724 0</b>	HUB CAP	D 52X 35	2	



109



QUANTUM 2500 K / 2500 P

**CLAAS**



93480F/01

**CUTTING FRAME - KNIVES**

<b>Pos.</b>	<b>Part No.</b>	<b>Description</b>	<b>Dimension</b>	<b>Quantity</b>	<b>Conditions</b>
1	<b>00 0920 485 0</b>	SAFETY CORD		1	
2	<b>00 0920 486 0</b>	ROLLER		17	
3	<b>00 0920 487 0</b>	PIN		17	
4	<b>00 0920 488 0</b>	TIGHTENING PIECE		16	
5	<b>00 0920 489 0</b>	BRACKET		17	
6	<b>00 0920 490 0</b>	KNIFE-LEVER		1	
7	<b>00 0920 491 0</b>	SHAFT		1	
8	<b>00 0920 492 0</b>	BLADE FRAME		1	
9	<b>00 0920 493 0</b>	LEVER		1	
10	<b>00 0920 495 0</b>	RINGNUT		2	
11	<b>00 0920 496 0</b>	SPRING CLIP		1	
12	<b>00 0235 090 0</b>	SPLIT PIN	4 X 28	18	
13	<b>00 0237 874 0</b>	HEXAGON HEAD BOLT	M10X35	16	
14	<b>00 0237 456 0</b>	HEXAGON HEAD BOLT	M10X45	2	
15	<b>00 0237 571 0</b>	HEXAGON HEAD BOLT	M10X90	16	
16	<b>00 0237 462 0</b>	HEXAGON HEAD BOLT	M12X40	2	
17	<b>00 0236 171 0</b>	HEXAGONAL NUT	M10	18	
18	<b>00 0236 442 0</b>	COACH BOLT	M 8X 30	6	
19	<b>00 0237 947 0</b>	HEX. NUT WITH CLAMP. PART	M10	16	
20	<b>00 0239 181 0</b>	WASHER	10,5 -10,5X25X4	16	
21	<b>00 0238 206 0</b>	WASHER	13 X 30 X4	34	
22	<b>00 0920 467 0</b>	TENSION SPRING		34	
23	<b>00 0920 497 0</b>	KNIFE		11	
24	<b>00 0920 498 0</b>	BRACKET		2	
25	<b>00 0233 396 0</b>	HEXAGON HEAD BOLT	M10X30-MKL	4	
26	<b>00 0235 124 3</b>	FLAT WASHER	12- 13X24X2,5	6	
27	<b>00 0973 774 0</b>	RUBBER BAR		1	
28	<b>00 0920 500 0</b>	SPACER BUSH		4	
29	<b>00 0973 773 0</b>	LEDGE		1	
30	<b>00 0236 912 2</b>	FLAT WASHER	8 - 8,4X16X1,6	6	
31	<b>00 0238 132 0</b>	LOCK NUT	M8	6	

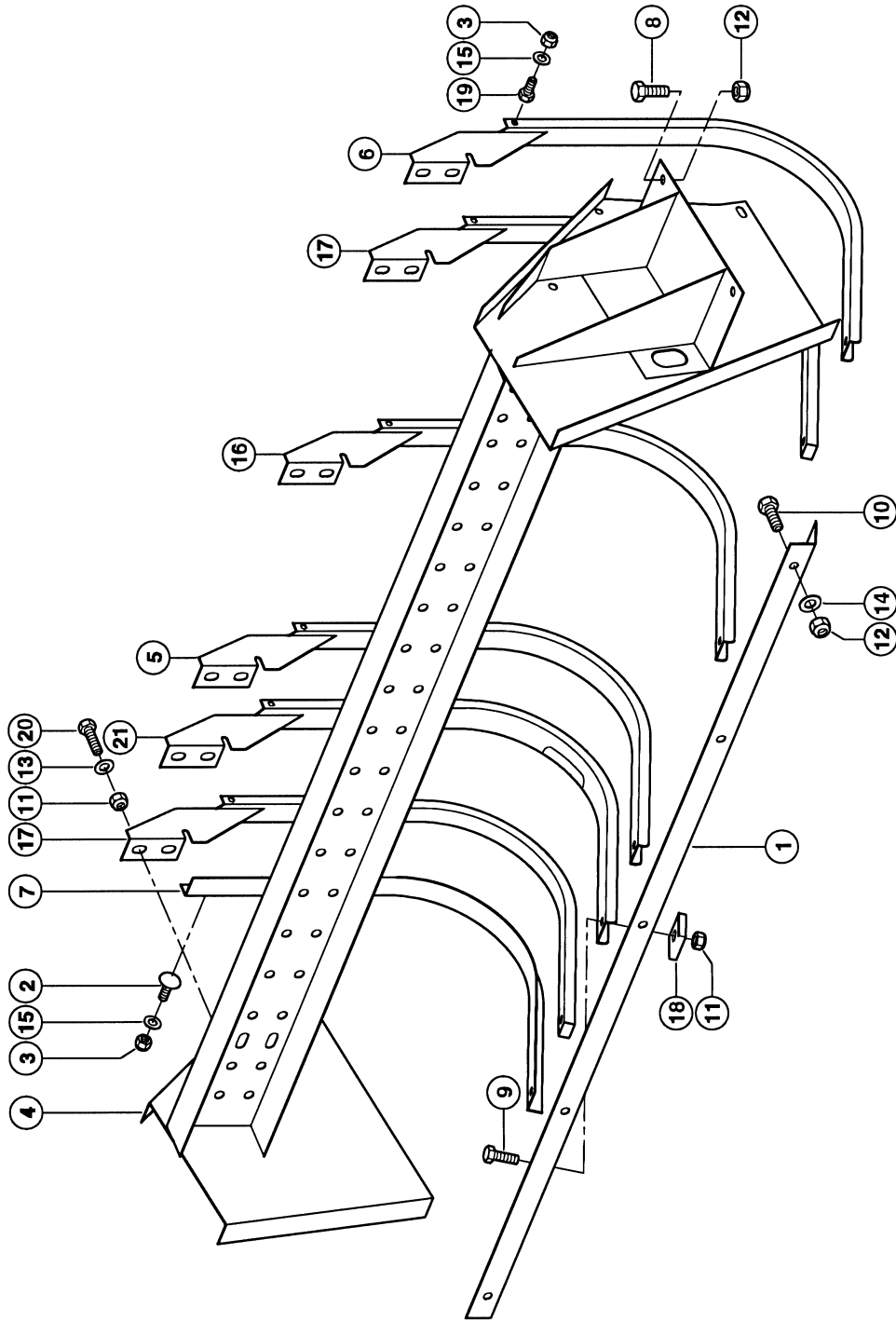


**CUTTING EQUIPMENT FOR SILAGE**

<b>Pos.</b>	<b>Part No.</b>	<b>Description</b>	<b>Dimension</b>	<b>Quantity</b>	<b>Conditions</b>
1	<b>00 0242 230 0</b>	SOCKET HEAD SCREW	M 8X 50	1	
2	<b>00 0138 435 0</b>	CRANK KNOB	D50-D8,2	1	
3	<b>00 0236 912 2</b>	FLAT WASHER	8 - 8,4X16X1,6	1	
4	<b>00 0237 026 0</b>	SPLIT PIN	5X32	2	
5	<b>00 0235 128 2</b>	WASHER	21	2	
6	<b>00 0138 440 0</b>	EYEBOLT		2	
7	<b>00 0237 453 0</b>	HEXAGON HEAD BOLT	M10X30	1	
8	<b>00 0138 443 0</b>	LOCK		1	
9	<b>00 0236 171 0</b>	HEXAGONAL NUT	M10	18	
10	<b>00 0237 947 0</b>	HEX. NUT WITH CLAMP. PART	M10	16	
11	<b>00 0973 727 0</b>	TORSION BAR		1	
12	<b>00 0138 447 0</b>	LEVER		1	
13	<b>00 0212 291 0</b>	LINCH PIN	6X42 ERS.D.1071398.1	2	
14	<b>00 0138 445 0</b>	STRAP		2	
15	<b>00 0238 132 0</b>	LOCK NUT	M8	1	
16	<b>00 0920 489 0</b>	BRACKET		16	
17	<b>00 0920 487 0</b>	PIN		16	
18	<b>00 0235 090 0</b>	SPLIT PIN	4 X 28	16	
19	<b>00 0235 666 2</b>	SPRING PIN	6 X 40	1	
20	<b>00 0244 578 0</b>	SPRING PIN	10 X 40 -ST	1	
21	<b>00 0920 497 0</b>	KNIFE		16	
22	<b>00 0238 206 0</b>	WASHER	13 X 30 X4	32	
23	<b>00 0920 486 0</b>	ROLLER		16	
24	<b>00 0920 488 0</b>	TIGHTENING PIECE		16	
25	<b>00 0920 467 0</b>	TENSION SPRING		25	
26	<b>00 0138 442 0</b>	AXLE	UNTEN	1	
27	<b>00 0236 913 2</b>	FLAT WASHER	10-10,5X20X2	15	
28	<b>00 0237 874 0</b>	HEXAGON HEAD BOLT	M10X35	15	
29	<b>00 0237 571 0</b>	HEXAGON HEAD BOLT	M10X90	16	
30	<b>00 0211 407 0</b>	HEXAGON HEAD BOLT	M10X45	2	
31	<b>00 0138 446 0</b>	RINGNUT		2	
32	<b>00 0138 441 0</b>	KNIFE-LEVER	UNTEN	1	
33	<b>00 0138 444 0</b>	KNIFE CARRIER		1	
34	<b>00 0237 883 0</b>	SPLIT PIN	6,3X 50	2	
35	<b>00 0138 448 0</b>	PIN		2	

110

**CLAAS**



QUANTUM 2500 K / 2500 P



93468F/01

Thank you so much for reading.  
Please click the “Buy Now!”  
button below to download the  
complete manual.



After you pay.

You can download the most  
perfect and complete manual in  
the world immediately.

Our support email:

[ebooklibonline@outlook.com](mailto:ebooklibonline@outlook.com)