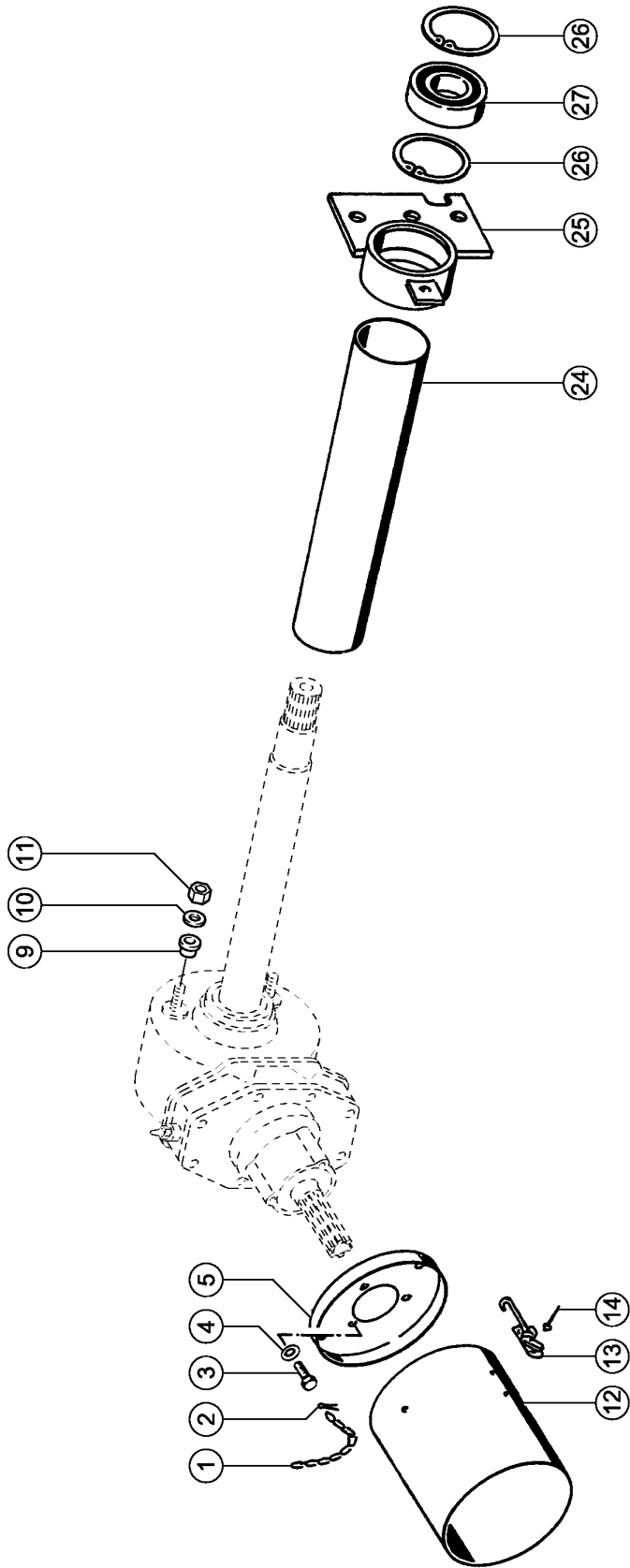


1

**CLAAS**

ROLLANT 260



61792Z00  
ROLLANT 160

150109

**GEARBOX WIT INTERMEDIATE DRIVE ASSY**

<b>Pos.</b>	<b>Part No.</b>	<b>Description</b>	<b>Dimension</b>	<b>Quantity</b>	<b>Conditions</b>
1	<b>00 0608 099 0</b>	ROUND STEEL CHAIN	G 3X16-17GL	1	
2	<b>00 0235 089 0</b>	SPLIT PIN	4 X 22	1	
3	<b>00 0237 439 0</b>	HEXAGON HEAD BOLT	M8X16	3	
4	<b>00 0239 387 0</b>	CONTACT WASHER	A8-8,2X18X1,4	3	
5	<b>00 0843 463 0</b>	GUARD CUP	D206X1.5	1	
9	<b>00 0810 117 0</b>	BUSHING	D30X20	2	
10	<b>00 0239 389 0</b>	CONTACT WASHER	A12	2	
11	<b>00 0236 172 0</b>	HEXAGONAL NUT	M12	2	
12	<b>00 0822 996 0</b>	PROTECT.TUBE CPL.		1	
13	<b>00 0822 998 1</b>	LOCK		2	
14	<b>00 0237 922 1</b>	BLIND RIVET	A 4X12	4	
24	<b>00 0821 067 1</b>	PROTECTIVE TUBE	D 110 X 496LG	1	
25	<b>00 0860 329 0</b>	BEARING HOUSING		1	
26	<b>00 0235 194 0</b>	CIRCLIP	110X4	2	
27	<b>00 0236 225 4</b>	GRVD.BALL BEARING	6310-2RSR-C4	1	

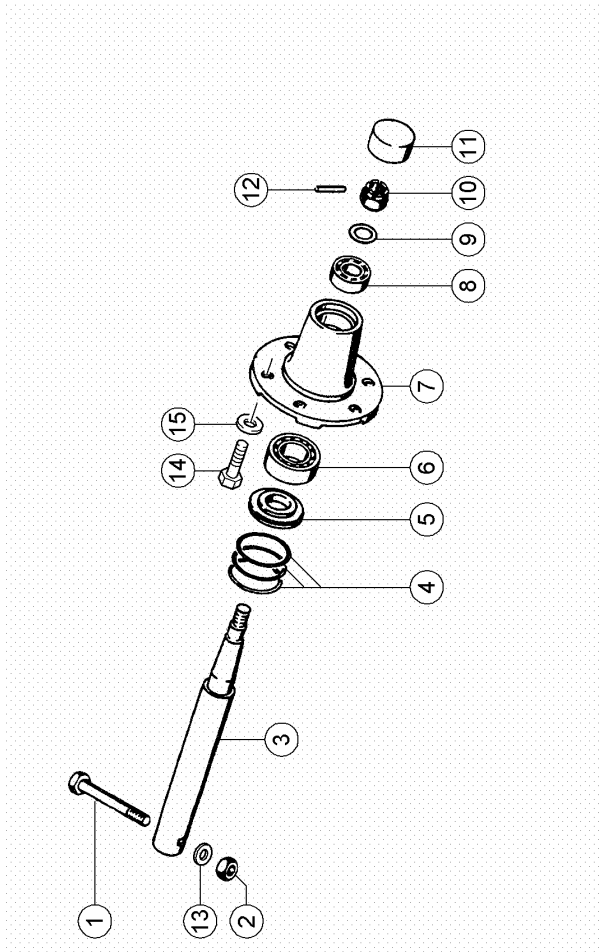


**GEARBOX "WALTERSCHEID"**

Pos.	Part No.	Description	Dimension	Quantity	Conditions
1	<b>00 0858 472 0</b>	GETRIEBE 540 U/MIN	I=2,33	1	
2	<b>00 0213 767 0</b>	LOCKING COVER	55X10	1	
6	<b>00 0940 866 0</b>	BREATHER VALVE	M 16X1,5 M. SPRITZROHR	1	
7	<b>00 0238 183 0</b>	SEALING RING	A16 X20	4	
8	<b>00 0844 564 0</b>	HOUSING		1	
9	<b>00 0244 014 1</b>	STUD BOLT	M12X 45	2	
10	<b>00 0823 993 0</b>	SLOTTED NUT	M55X1,5	1	
11	<b>00 0851 339 0</b>	BEVEL GEAR SET	I=2,33	1	
12	<b>00 0212 210 0</b>	TA.ROLLER BEARING	330 12	1	
13	<b>00 0213 765 0</b>	SHIM	85X 95X0,5	1	
13	<b>00 0213 764 0</b>	SHIM	85X 95X0,3	1	
13	<b>00 0213 962 0</b>	SHIM	85X 95X0,1	1	
14	<b>00 0211 034 0</b>	ROTARY SHAFT SEAL	AS 60X 85X 8	1	
15	<b>00 0851 340 0</b>	SHAFT		1	
17	<b>00 0243 686 0</b>	TA.ROLLER BEARING	30311A - 55X120X31,5	1	
18	<b>00 0214 180 0</b>	SHIM	110X120X0,3 ERS.D. 21418	1	
18	<b>00 0214 181 0</b>	SHIM	110X120X0,5 ERS.D. 21418	1	
18	<b>00 0213 760 0</b>	SHIM	106X120X0,20	1	
19	<b>00 0244 351 0</b>	SCREW PLUG	M16X1,5	3	
20	<b>00 0237 572 0</b>	HEXAGON HEAD BOLT	M12X35	8	
21	<b>00 0213 766 0</b>	SHAFT SEAL	AS 40X 90X12	1	
22	<b>00 0823 994 0</b>	SLOTTED NUT	M45X1,5	1	
23	<b>00 0234 829 0</b>	TA.ROLLER BEARING	30209 J2/Q	2	
24	<b>00 0844 565 0</b>	BEARING HOUSING		1	

20

**CLAAS**



61835Z01

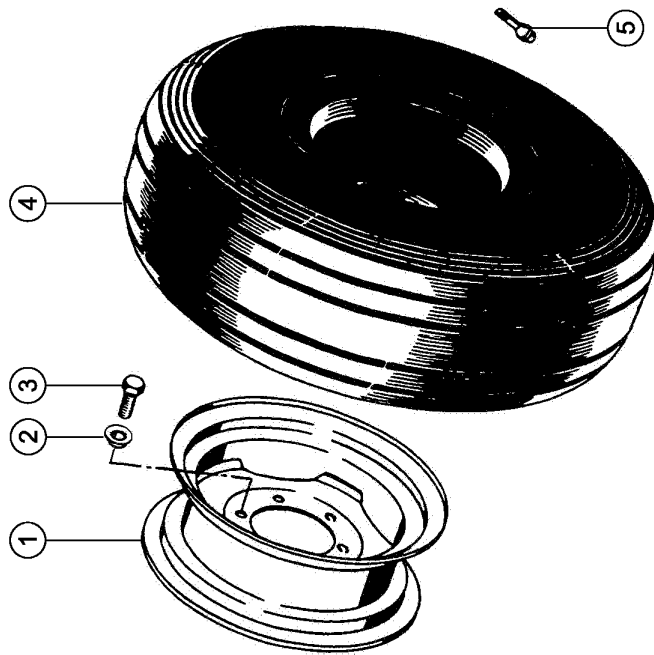
**AXLE**

<b>Pos.</b>	<b>Part No.</b>	<b>Description</b>	<b>Dimension</b>	<b>Quantity</b>	<b>Conditions</b>
1	<b>00 0242 395 1</b>	HEXAGON HEAD BOLT	M16X120	2	
2	<b>00 0238 047 0</b>	LOCK NUT	M16	2	
3	<b>00 0823 696 2</b>	AXLE	D 60X499	2	
4	<b>00 0673 428 0</b>	SET OF SEALS	AS 90 3,3 BREIT	2	
5	<b>00 0655 088 2</b>	THRUST WASHER	50X 89X 6	2	
6	<b>00 0235 922 0</b>	GRVD.BALL BEARING	6210-50X90X20	2	
7	<b>00 0823 692 2</b>	WHEEL HUB		2	
8	<b>00 0235 918 0</b>	GRVD.BALL BEARING	6208 -40X80X18	2	
9	<b>00 0233 035 0</b>	WASHER	37X56X5	2	
10	<b>00 0244 461 0</b>	CASTELLATED NUT	M36X1,5	2	
11	<b>00 0823 693 0</b>	GUARD CAP		2	
12	<b>00 0235 668 0</b>	SPRING PIN	6 X 50	1	
13	<b>00 0234 337 0</b>	WASHER	17X42X3	2	
14	<b>00 0238 302 0</b>	HEXAGON HEAD SCREW	M18X1,5X 30	12	
15	<b>00 0236 447 0</b>	SPRING WASHER	C 18,5X29X7	12	

25

**CLAAS**

ROLLANT 260



61836Z00  
ROLLANT 160

150153

**TIRES AND WHEELS**

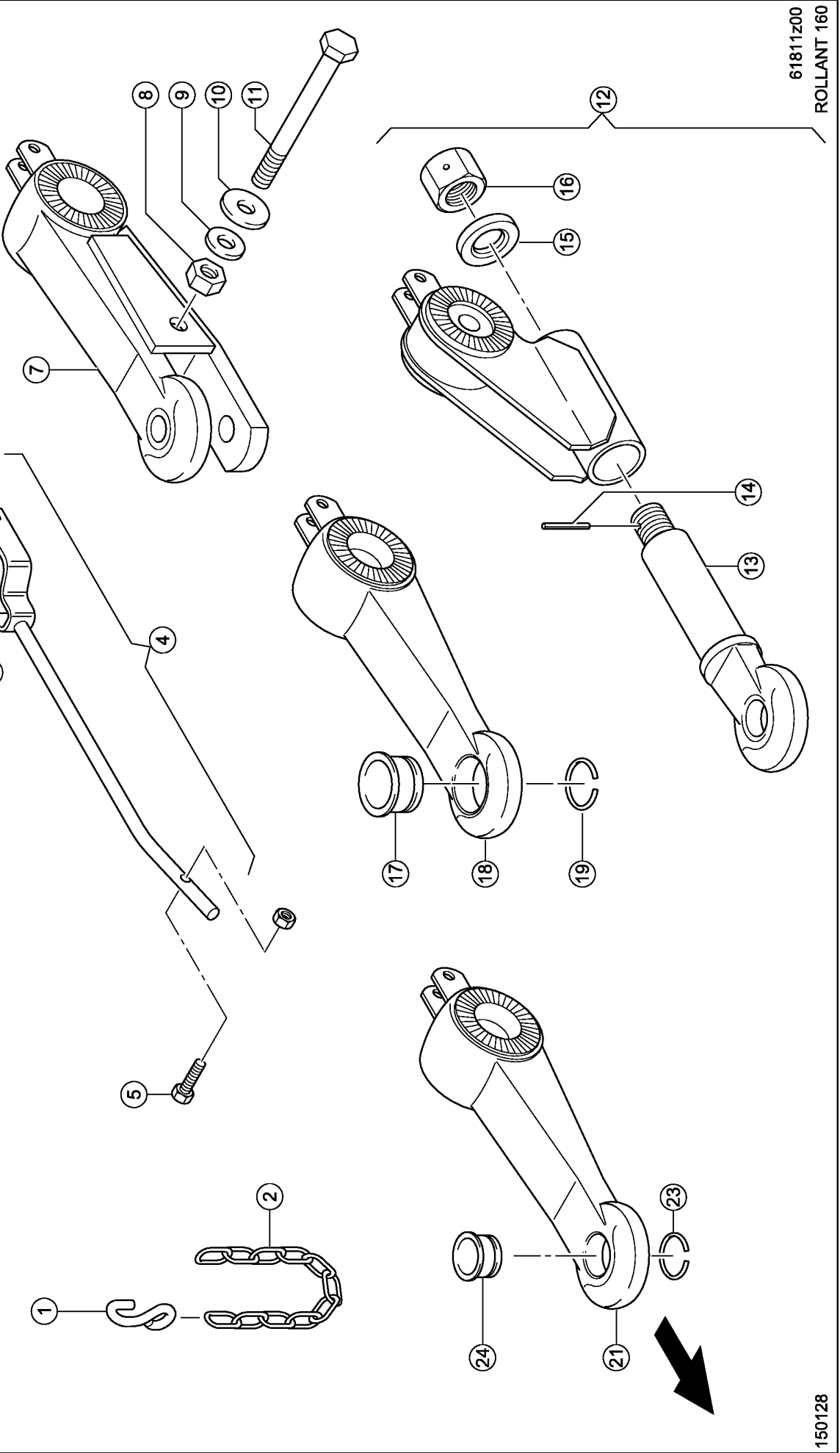
<b>Pos.</b>	<b>Part No.</b>	<b>Description</b>	<b>Dimension</b>	<b>Quantity</b>	<b>Conditions</b>
1	<b>00 0945 810 0</b>	WHEEL RIM	9.00X15.3	2	1)
1	<b>00 0945 805 0</b>	WHEEL RIM	13-17	2	2)
1	<b>00 0960 112 0</b>	WHEEL RIM	16.00 X 17	2	3)
2	<b>00 0236 447 0</b>	SPRING WASHER	C 18,5X29X7	12	
3	<b>00 0238 302 0</b>	HEXAGON HEAD SCREW	M18X1,5X 30	12	
4	<b>00 0938 138 1</b>	TYRE	11,5/80-15.3 8PR AW TL	2	
4	<b>00 0823 725 0</b>	TYRE	15/55-17 14PR	2	
4	<b>00 0962 700 0</b>	TYRE	480/45-17 14PR	2	
5	<b>00 0676 839 0</b>	WHEEL RIM VALVE	43 GS/16	2	
<b>1)</b>	<b>Remarks</b>	with tyres 11.5/80-15.3			
<b>2)</b>	<b>Remarks</b>	with tyres 15.0/55-17			
<b>3)</b>	<b>Remarks</b>	with tyre 19.0/45-17			



50

**CLAAS**

ROLLANT 260



61811Z00  
ROLLANT 160

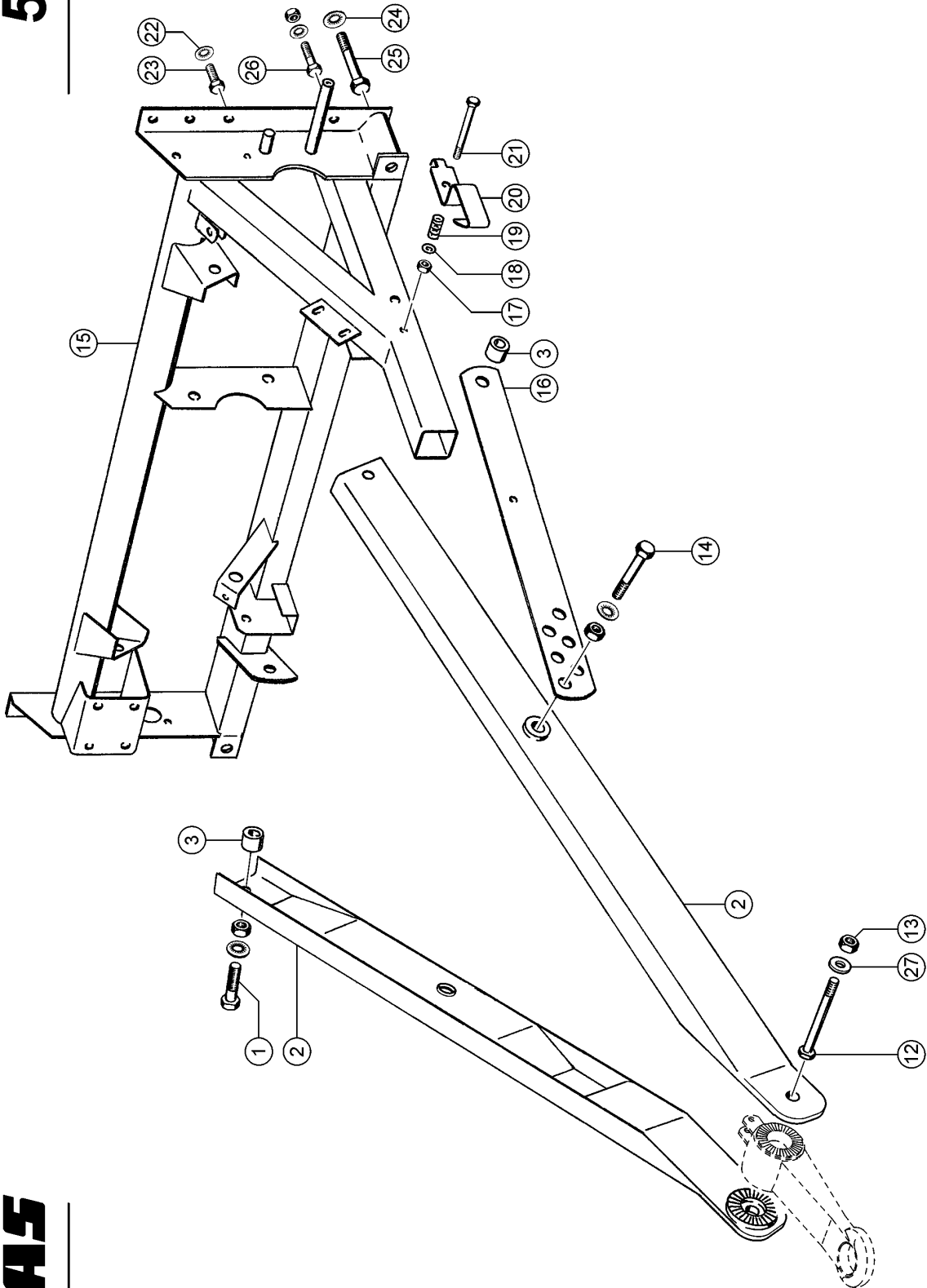
150128



**DRAWBAR**

<b>Pos.</b>	<b>Part No.</b>	<b>Description</b>	<b>Dimension</b>	<b>Quantity</b>	<b>Conditions</b>
1	<b>00 0503 057 0</b>	HOOK	10 X 150	1	
2	<b>00 0789 851 0</b>	ROUND STEEL CHAIN	6X 42X 13GL	1	
4	<b>00 0843 492 0</b>	SUPPORT		1	
5	<b>00 0235 533 0</b>	HEX.HEAD BOLT	M10X45	1	
5	<b>00 0237 947 0</b>	HEX. NUT WITH CLAMP. PART	M10	1	
6	<b>00 0808 698 2</b>	FORK	25X5	1	
7	<b>00 0843 493 1</b>	DRAW BAR EYE	D=1ZOLL	1	
8	<b>00 0238 047 0</b>	LOCK NUT	M16	1	
9	<b>00 0239 391 0</b>	CONTACT WASHER	A16	1	
10	<b>00 0750 253 0</b>	WASHER	16,5X60 X3	1	
11	<b>00 0237 888 0</b>	HEXAGON HEAD BOLT	M16X130	1	
12	<b>00 0843 497 0</b>	DRAW BAR EYE		1	
13	<b>00 0843 499 0</b>	SCREWED EYELET		1	
14	<b>00 0235 653 2</b>	SPRING PIN	5 X 50	1	
15	<b>00 0838 388 0</b>	WASHER	D34X13X60	1	
16	<b>00 0838 389 0</b>	NUT	SW50XM33X33	1	
17	<b>00 0851 145 0</b>	BUSHING	DEXT50 DINT40	1	
18	<b>00 0843 494 0</b>	DRAW BAR EYE	D50	1	
19	<b>00 0239 272 0</b>	SNAP RING	A 50	1	
21	<b>00 0843 496 0</b>	DRAW BAR EYE	D40	1	
23	<b>00 0239 400 0</b>	SNAP RING	A 40	1	
24	<b>00 0851 153 0</b>	BUSHING	DEXT40 DINT32,5	1	

51



61810z04

**CLAAS**

**DRAWBAR AND CROSS MEMBER**

Pos.	Part No.	Description	Dimension	Quantity	Conditions
1	<b>00 0217 559 0</b>	HEX.HEAD BOLT	M24X2X 90	4	1)
1	<b>00 0455 717 1</b>	LOCK WASHER	NL24 -25,3X39X3,4	4	1)
1	<b>00 0460 769 0</b>	HEX.NUT	M24X2,0	4	1)
1	<b>00 0213 854 0</b>	HEXAGON HEAD SCREW	M24X2X 80	4	2)
1	<b>00 0212 184 0</b>	WASHER	24-25X44X4	4	2)
1	<b>00 0213 856 0</b>	LOCK NUT	M24 X 2	4	2)
2	<b>00 0843 490 2</b>	DRAWBAR		2	
3	<b>00 0822 035 0</b>	BUSHING	D 40X30	4	2)
12	<b>00 0214 075 0</b>	HEXAGON HEAD BOLT	M20X160	1	3)
12	<b>00 0213 938 0</b>	HEXAGON HEAD SCREW	M20X1,5X140	1	4)
13	<b>00 0233 551 0</b>	LOCK NUT	M20	1	5)
13	<b>00 0212 736 0</b>	LOCK NUT	M20X1,5	1	2)
14	<b>00 0477 126 0</b>	HEX.HEAD BOLT	M24X2X140	4	1)
14	<b>00 0455 717 1</b>	LOCK WASHER	NL24 -25,3X39X3,4	4	1)
14	<b>00 0460 769 0</b>	HEX.NUT	M24X2,0	4	1)
14	<b>00 0213 854 0</b>	HEXAGON HEAD SCREW	M24X2X 80	4	2)
14	<b>00 0212 184 0</b>	WASHER	24-25X44X4	4	2)
14	<b>00 0213 856 0</b>	LOCK NUT	M24 X 2	4	2)
15	<b>00 0858 493 0</b>	CROSS SUPPORT		1	
16	<b>00 0843 491 3</b>	STRAP	80X10X805	2	
17	<b>00 0237 947 0</b>	HEX. NUT WITH CLAMP. PART	M10	1	
18	<b>00 0236 913 2</b>	FLAT WASHER	10-10,5X20X2	1	
19	<b>00 0802 003 0</b>	COMPRESS.SPRING	2 X 12,5X 55	1	
20	<b>00 0860 194 0</b>	RATCHET	40X5X267	1	
21	<b>00 0235 546 0</b>	HEXAGON HEAD BOLT	M10X130	1	
22	<b>00 0239 389 0</b>	CONTACT WASHER	A12	6	
23	<b>00 0211 058 0</b>	HEXAGON HEAD BOLT	M12X40-MKL	6	
24	<b>00 0212 191 0</b>	CONTACT WASHER	A20	2	
25	<b>00 0237 830 0</b>	HEXAGON HEAD BOLT	M20X140	2	
26	<b>00 0211 359 1</b>	HEXAGON HEAD BOLT	M12X55	2	
26	<b>00 0239 389 0</b>	CONTACT WASHER	A12	2	
26	<b>00 0244 144 0</b>	HEXAGONAL NUT	M12	2	
27	<b>00 0455 716 1</b>	LOCK WASHER	DNL20 - 21,4X30,7X3,41		1)

---

**1) machine no.** + from 76500387

---

**2) machine no.** + up to 76500386

---

**3) machine no.** + from 76500017  
+ from 76500387

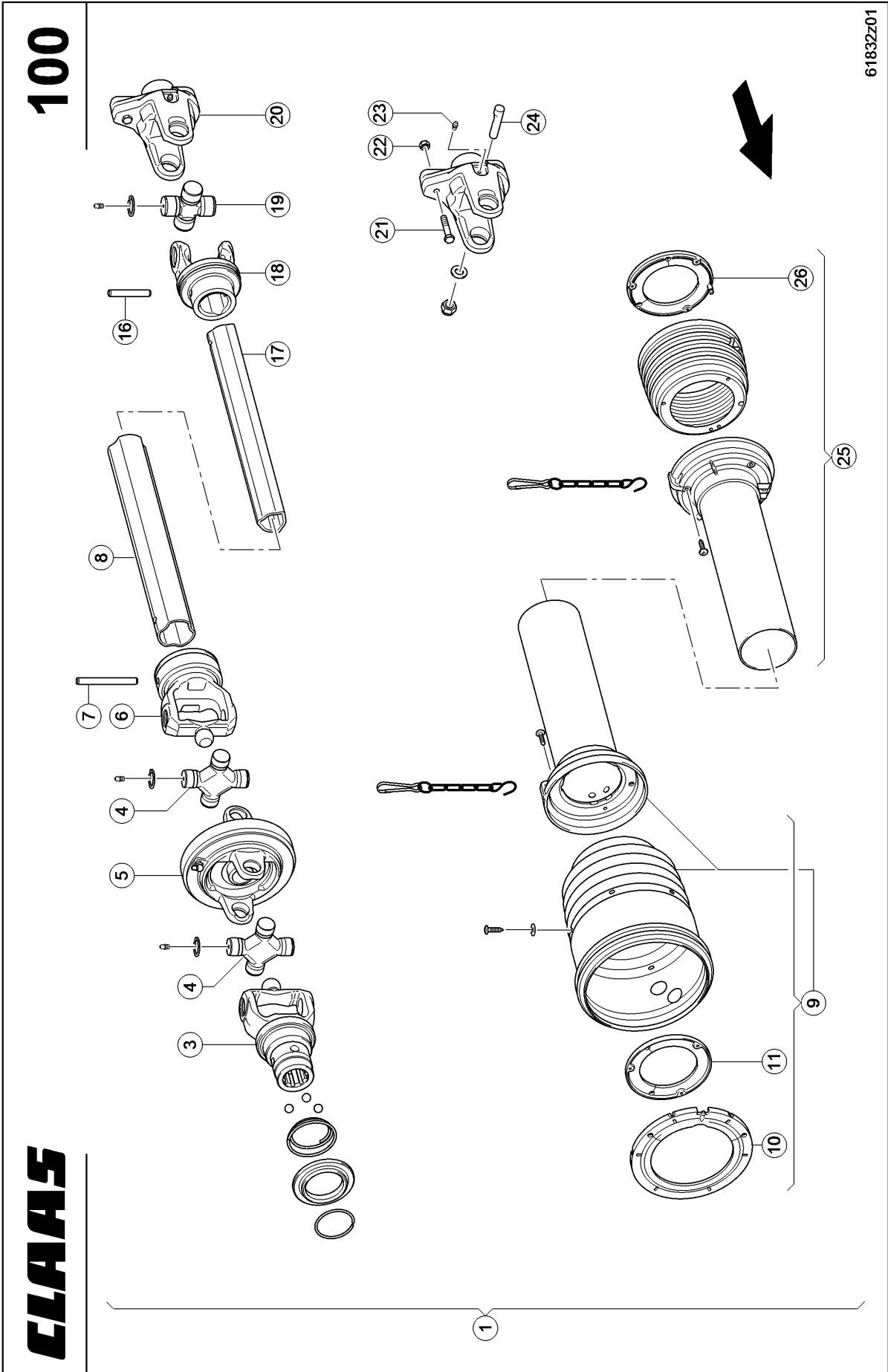
---

**4) machine no.** + up to 76500016

---

**5) machine no.** + from 76500378

---



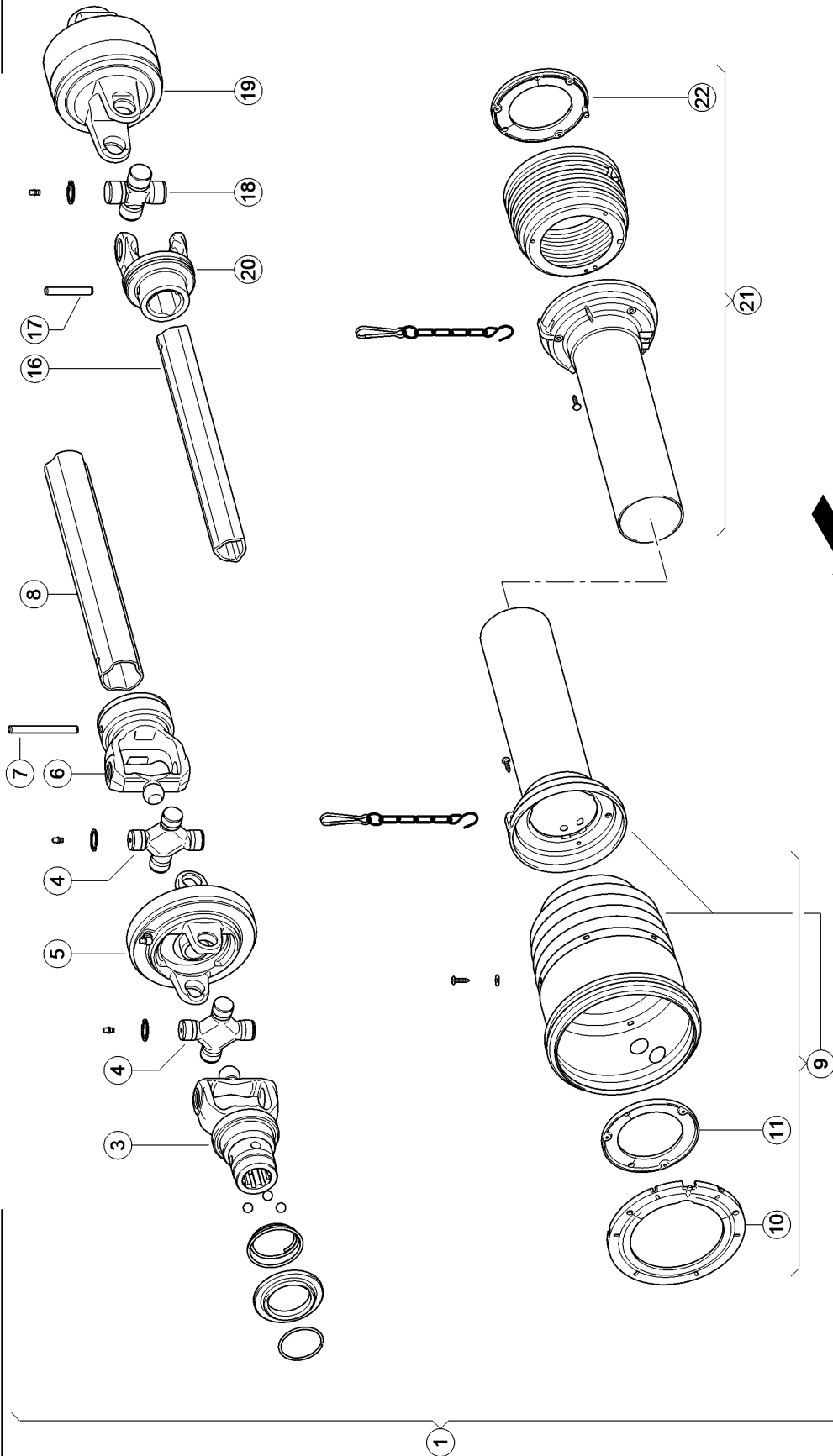
**UNIVERSAL DRIVE SHAFT WITH SHEAR BOLT CL 1)**

Pos.	Part No.	Description	Dimension	Quantity	Conditions
1	<b>00 0843 756 0</b>	DRIVE SHAFT ASSY.		1	2)
1	<b>00 0843 757 0</b>	DRIVE SHAFT ASSY.		1	3)
3	<b>00 0843 764 0</b>	FORK		1	4)
3	<b>00 0843 775 0</b>	FORK		1	3)
4	<b>00 0843 765 0</b>	CENTRE CROSS ASS.		2	
5	<b>00 0843 767 0</b>	FORK		1	
6	<b>00 0843 766 0</b>	INNER FORK		1	
7	<b>00 0234 862 0</b>	SPRING PIN	10 X100	1	
8	<b>00 0843 768 0</b>	TUBE		1	
9	<b>00 0843 762 0</b>	GUARD HALF		1	5)
10	<b>00 0844 557 0</b>	RING		1	
11	<b>00 0844 558 0</b>	RING		1	
16	<b>00 0244 579 0</b>	SPRING PIN	10X65	1	
17	<b>00 0843 773 0</b>	TUBE		1	
18	<b>00 0843 772 0</b>	FORK		1	
19	<b>00 0843 771 0</b>	CENTRE CROSS ASS.		1	
20	<b>00 0843 777 0</b>	SHEAR BOLT CLUTCH		1	
21	<b>00 0237 341 0</b>	HEXAGON HEAD BOLT	M08X45	1	
22	<b>00 0238 132 0</b>	LOCK NUT	M8	1	
23	<b>00 0843 770 0</b>	CLAMPING SCREW	1-3/8"Z6-Z21	1	
24	<b>00 0236 942 0</b>	GREASE NIPPLE	A S6X1	1	
25	<b>00 0843 763 0</b>	GUARD HALF		1	6)
26	<b>00 0836 346 0</b>	RING		1	

<b>1) Remarks</b>	m 04 / 10 = 6-Tlg.Anschluss m 04 / 20 = 8-Tlg.Anschluss Bondioli
<b>2) machine no.</b>	+ up to 76500560 6 piece
<b>3) Remarks</b>	8 piece
<b>4) Remarks</b>	6 piece
<b>5) Remarks</b>	with Item 10. 11
<b>6) Remarks</b>	with Item 26

101

CLAAS



61833Z00  
ROLLANT 160

150150

Thank you so much for reading.  
Please click the “Buy Now!”  
button below to download the  
complete manual.



After you pay.

You can download the most  
perfect and complete manual in  
the world immediately.

Our support email:

[ebooklibonline@outlook.com](mailto:ebooklibonline@outlook.com)