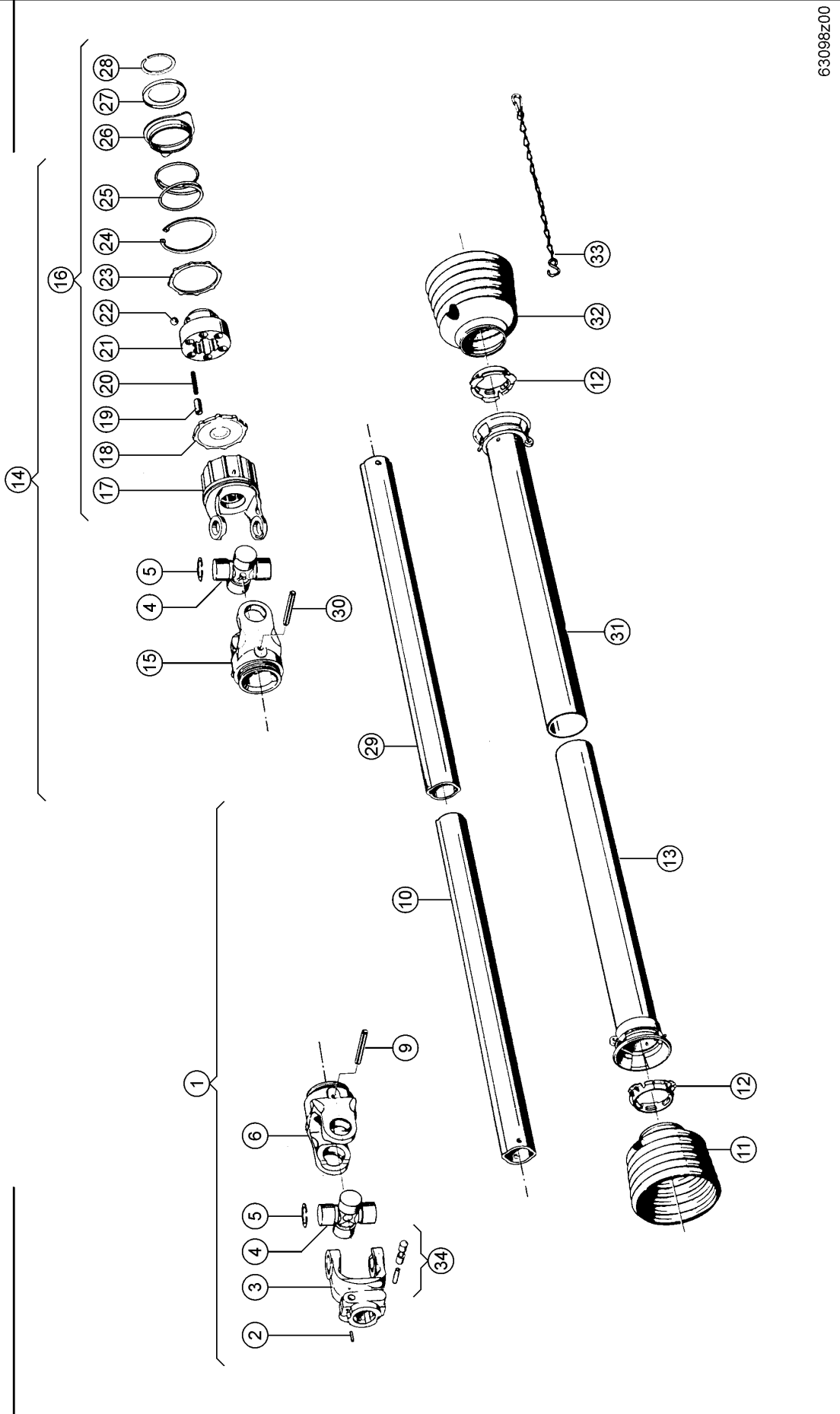


CLAAS

1



63098z00

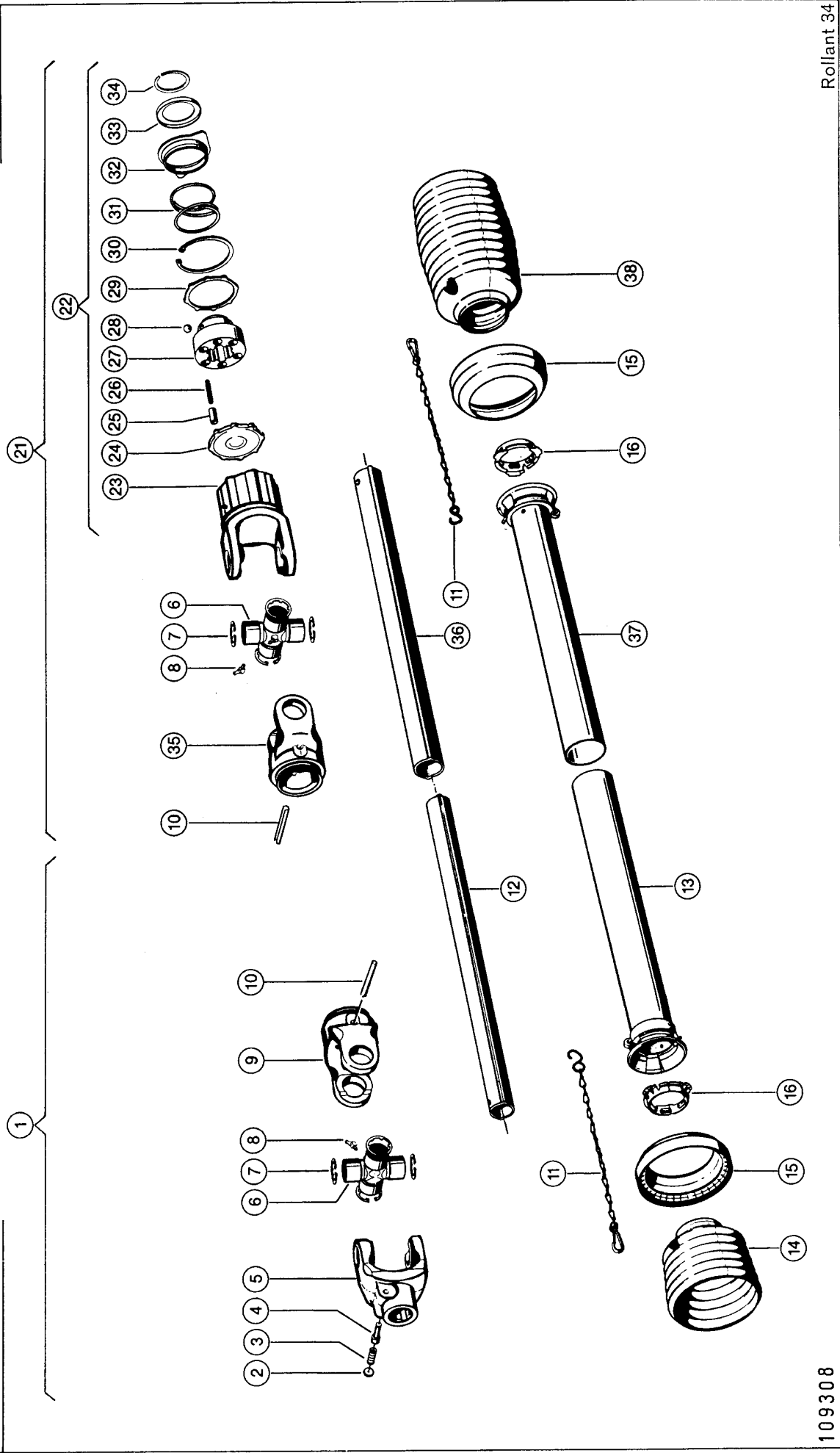
UNIVERSAL DRIVE SHAFT WITH OVER-RUN CLUT 1)

Pos.	Part No.	Description	Dimension	Quantity	Conditions
1	00 0818 090 1	DRIVE SHAFT HALF		1	2)
2	00 0237 603 0	SPRING PIN	4 X 20	2	3)
3	00 0977 215 0	EXTENSION FORKE		1	4)
3	00 0809 981 0	EXTENSION FORKE		1	5)
4	00 0977 213 0	CENTRE CROSS ASS.		2	3)
5	00 0977 214 0	CIRCLIP		8	3)
6	00 0977 216 0	TENSION PIN FORKE		1	3)
9	00 0244 580 0	SPRING PIN	10 X 75	1	3)
10	00 0818 114 1	PROFILE TUBE		1	
11	00 0812 313 0	PROTECT.FUNNEL		1	3)
12	00 0920 671 0	GLIDE RING		2	
13	00 0818 116 0	INNER GUARD TUBE	740 LG	1	3)
14	00 0818 853 0	DRIVE SHAFT HALF	.	1	6)
15	00 0977 217 1	TENSION PIN FORKE		1	3)
16	00 0812 972 0	OVER-RUN CLUTCH		1	3)
17	00 0812 971 0	CLUTCH HOUSING		1	3)
18	00 0972 491 0	DRIVING DISC		1	
19	00 0972 492 0	CYLIND.ROLLER		6	
20	00 0920 681 0	COMPRESS.SPRING		6	
21	00 0920 680 0	HUB		1	
22	00 0241 041 0	STEEL BALL	12,7 G28	3	
23	00 0920 679 0	THRUST WASHER		1	
24	00 0972 502 0	CIRCLIP		1	
25	00 0920 678 0	COMPRESS.SPRING		1	
26	00 0920 677 0	LOCKING SLEEVE		1	
27	00 0920 676 0	ANGLE RING		1	
28	00 0239 343 0	SNAP RING	SP 42	1	
29	00 0818 115 1	PROFILE TUBE		1	
30	00 0239 445 0	SPRING PIN	W.ERS.D.2394451	1	3)
31	00 0920 981 1	OUTER GUARD HALF		1	3)
32	00 0818 855 1	PROTECT.FUNNEL		1	
33	00 0972 297 0	SUPPORTING CHAIN		1	
34	00 0178 083 0	SLIDING PIN SET	AGRASET 100	1	

1) Remarks	VAR. 3415 UP TO SERIAL NO. 00500772
2) Remarks	tractor side
3) Remarks	
4) Remarks	1 3/8 inch = 35 mm
5) Remarks	1 3/4 ZOLL = 45 MM
6) Remarks	machine side

1A

CLHAS



Rollant 34

109308

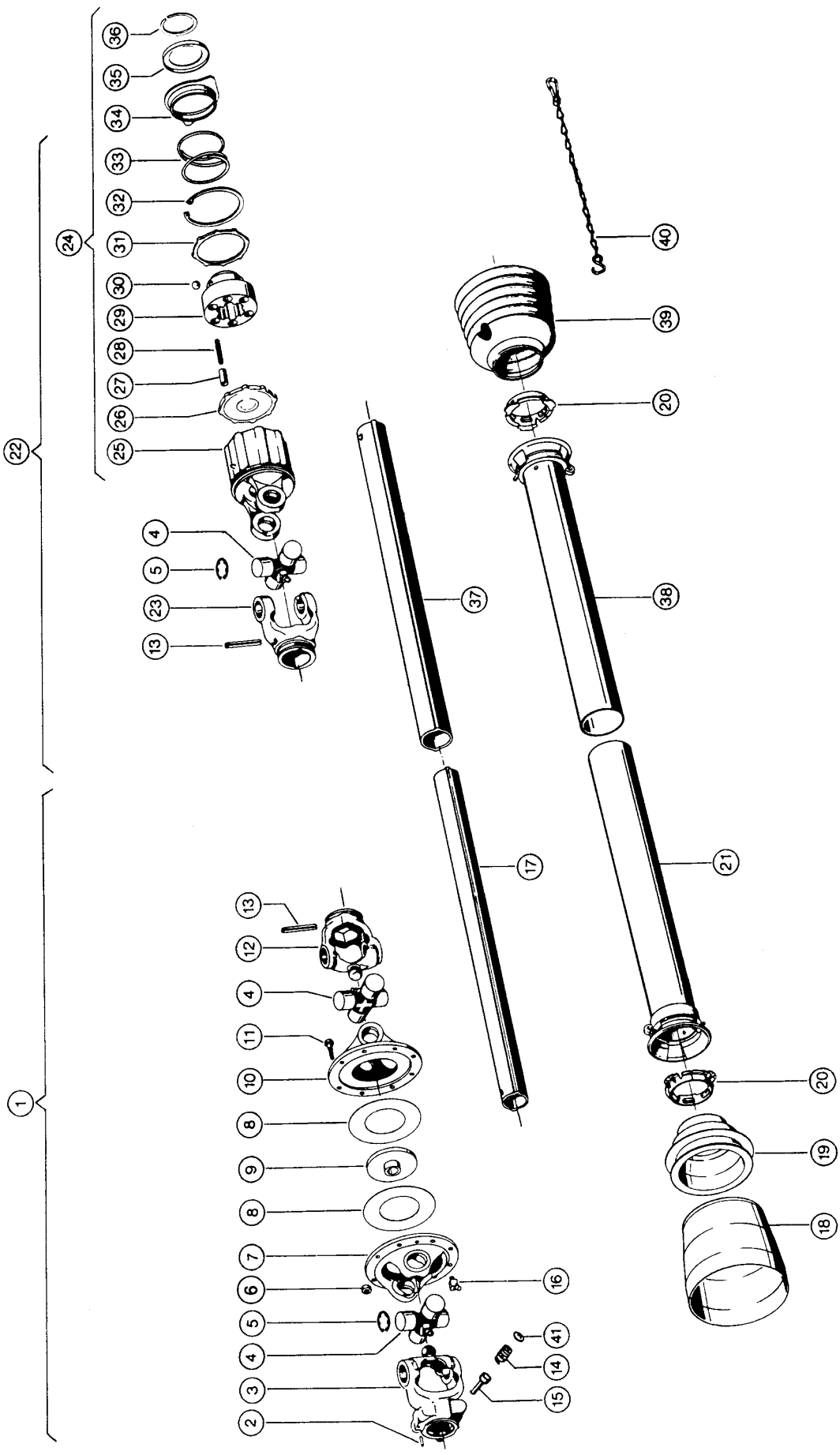
UNIVERSAL DRIVE SHAFT WITH OVER-RUN CLUT 1)

Pos.	Part No.	Description	Dimension	Quantity	Conditions
	00 0820 400 0	DRIVE SHAFT ASSY.		1	2)
1	00 0820 417 0	DRIVE SHAFT HALF		1	3)
2	00 0813 698 0	WASHER		1	
3	00 0813 697 0	COMPRESS.SPRING		1	
4	00 0813 696 0	SLIDING PIN		1	
5	00 0941 657 0	EXTENSION FORKE		1	2)
6	00 0941 651 0	CENTRE CROSS ASS.		2	2)
7	00 0242 908 0	CIRCLIP	32X1,2	8	2)
8	00 0211 636 0	GREASE NIPPLE	B M8X1-67,5°	2	
9	00 0941 656 0	FORK		1	2)
10	00 0244 581 0	SPRING PIN	W.ERS.D 2445812	2	2)
11	00 0972 297 0	SUPPORTING CHAIN		2	
12	00 0818 114 1	PROFILE TUBE		1	
13	00 0920 981 1	OUTER GUARD HALF		1	2)
14	00 0818 093 0	PROTECT.FUNNEL		1	2)
15	00 0917 283 0	BACK-UP RING		1	2)
16	00 0920 671 0	GLIDE RING		2	
21	00 0820 418 0	DRIVE SHAFT HALF	ERS.D.820418.1	1	4)
22	00 0941 811 0	OVER-RUN CLUTCH	WS 56.181.02	1	2)
23	00 0941 765 0	CLUTCH HOUSING		1	2)
24	00 0972 491 0	DRIVING DISC		1	
25	00 0972 492 0	CYLIND.ROLLER		6	
26	00 0920 681 0	COMPRESS.SPRING		6	
27	00 0920 680 0	HUB		1	
28	00 0241 041 0	STEEL BALL	12,7 G28	3	
29	00 0920 679 0	THRUST WASHER		1	
30	00 0972 502 0	CIRCLIP		1	
31	00 0920 678 0	COMPRESS.SPRING		1	
32	00 0920 677 0	LOCKING SLEEVE		1	
33	00 0920 676 0	ANGLE RING		1	
34	00 0239 343 0	SNAP RING	SP 42	1	
35	00 0941 656 0	FORK		1	2)
36	00 0818 115 1	PROFILE TUBE		1	
37	00 0818 116 0	INNER GUARD TUBE	740 LG	1	
38	00 0818 855 1	PROTECT.FUNNEL		1	

1) Remarks	VAR. 4349 FROM SERIAL NO. 00500773
2) Remarks	
3) Remarks	tractor side
4) Remarks	machine side

CLAAS

2



109309

Rollant 34

UNIVERSAL DRIVE SHAFT WITH OVER-RUN CLUTCH 1)

Pos.	Part No.	Description	Dimension	Quantity	Conditions
1	00 0818 844 0	DRIVE SHAFT HALF		1	2)
1	00 0818 845 0	DRIVE SHAFT HALF		1	3)
2	00 0237 603 0	SPRING PIN	4 X 20	4	4)
3	00 0920 180 4	EXTENSION FORKE		1	5)
3	00 0942 158 0	EXTENSION FORKE		1	6)
4	00 0920 179 9	CENTRE CROSS ASS.		3	4)
5	00 0942 548 0	CIRCLIP		12	4)
6	00 0236 170 0	HEXAGONAL NUT	M8	8	4)
7	00 0920 181 1	FLANGE FORKE		1	4)
8	00 0920 183 3	GLIDE DISK		1	4)
9	00 0920 194 3	GUIDE WASHER		1	4)
10	00 0920 181 2	FORK		1	4)
11	00 0237 370 0	HEXAGON HEAD BOLT	M8X30	8	4)
12	00 0920 180 6	INNER FORK		1	4)
13	00 0244 580 0	SPRING PIN	10 X 75	1	4)
14	00 0813 697 0	COMPRESS.SPRING		2	4)
15	00 0813 696 0	SLIDING PIN		2	4)
16	00 0244 946 0	GREASE NIPPLE	B M8X1	1	
17	00 0818 850 0	PROFILE TUBE		1	
18	00 0920 193 4	PROTECT.FUNNEL		1	
19	00 0920 961 0	PROTECT.FUNNEL		1	
20	00 0920 671 0	GLIDE RING		1	
21	00 0818 842 0	PROTECTIVE TUBE		1	4)
22	00 0818 851 0	DRIVE SHAFT HALF	8204020	1	7)
23	00 0920 180 7	TENSION PIN FORKE		1	4)
24	00 0920 703 0	OVER-RUN CLUTCH		1	4)
25	00 0818 852 0	CLUTCH HOUSING		1	4)
26	00 0972 491 0	DRIVING DISC		1	
27	00 0972 492 0	CYLIND.ROLLER		6	
28	00 0920 681 0	COMPRESS.SPRING		6	
29	00 0920 680 0	HUB		1	
30	00 0241 041 0	STEEL BALL	12,7 G28	3	
31	00 0920 679 0	THRUST WASHER		1	
32	00 0972 502 0	CIRCLIP		1	
33	00 0920 678 0	COMPRESS.SPRING		1	
34	00 0920 677 0	LOCKING SLEEVE		1	
35	00 0920 676 0	ANGLE RING		1	
36	00 0239 343 0	SNAP RING	SP 42	1	
37	00 0818 843 1	PROFILE TUBE		1	
38	00 0818 849 0	PROTECTIVE TUBE	650 LANG	1	4)
39	00 0818 855 1	PROTECT.FUNNEL		1	
40	00 0972 297 0	SUPPORTING CHAIN		1	
41	00 0813 698 0	WASHER		2	

1) Remarks

VAR.3417 BEI 540. ZAPFWELLE
VAR.3539 BEI 1000. ZAPFWELLE
OPTION
UP TO SERIAL NO. 00500772

2) Remarks

at 540. P.T.O. shaft

3) Remarks

BEI 1000. ZAPFWELLE

4) Remarks**5) Remarks**

standard profile (6T.)

6) Remarks

VIELKEILPROFIL (21T.)

UNIVERSAL DRIVE SHAFT WITH OVER-RUN CLUTCH 1)

7) Remarks

machine side

UNIVERSAL DRIVE SHAFT WITH OVER-RUN CLUTCH 1)

Pos.	Part No.	Description	Dimension	Quantity	Conditions
	00 0820 401 0	DRIVE SHAFT ASSY.	.	1	2)
	00 0820 402 0	DRIVE SHAFT ASSY.	21T	1	3)
1	00 0820 415 0	DRIVE SHAFT HALF		1	4)
1	00 0820 419 0	DRIVE SHAFT HALF	WWE2480	1	3)
2	00 0813 698 0	WASHER		1	
3	00 0813 697 0	COMPRESS.SPRING		1	
4	00 0813 696 0	SLIDING PIN		1	
5	00 0941 475 0	EXTENSION FORKE		1	5)
5	00 0820 426 0	EXTENSION FORKE		1	6)
6	00 0972 503 0	CIRCLIP		8	7)
7	00 0211 636 0	GREASE NIPPLE	B M8X1-67,5°	3	
8	00 0242 908 0	CIRCLIP	32X1,2	8	7)
9	00 0820 421 0	CENTRE CROSS ASS.		2	7)
10	00 0820 422 0	DOUBLE FORK	W.ERS.D.9212680	1	7)
11	00 0244 946 0	GREASE NIPPLE	B M8X1	1	
12	00 0820 423 0	FORK		1	7)
13	00 0244 581 0	SPRING PIN	W.ERS.D 2445812	2	7)
14	00 0972 297 0	SUPPORTING CHAIN		2	
15	00 0818 850 0	PROFILE TUBE		1	
16	00 0820 424 0	OUTER TUBE GUARD		1	7)
17	00 0920 193 4	PROTECT.FUNNEL		1	
18	00 0920 961 0	PROTECT.FUNNEL		1	
19	00 0920 671 0	GLIDE RING		2	
21	00 0820 416 0	DRIVE SHAFT HALF	ERS.D.8204161	1	8)
22	00 0941 811 0	OVER-RUN CLUTCH	WS 56.181.02	1	7)
23	00 0941 765 0	CLUTCH HOUSING		1	7)
24	00 0972 491 0	DRIVING DISC		1	
25	00 0972 492 0	CYLIND.ROLLER		6	
26	00 0920 681 0	COMPRESS.SPRING		6	
27	00 0920 680 0	HUB		1	
28	00 0241 041 0	STEEL BALL	12,7 G28	3	
29	00 0920 679 0	THRUST WASHER		1	
30	00 0972 502 0	CIRCLIP		1	
31	00 0920 678 0	COMPRESS.SPRING		1	
32	00 0920 677 0	LOCKING SLEEVE		1	
33	00 0920 676 0	ANGLE RING		1	
34	00 0239 343 0	SNAP RING	SP 42	1	
35	00 0941 660 0	FORK		1	7)
36	00 0941 651 0	CENTRE CROSS ASS.		1	7)
37	00 0818 843 1	PROFILE TUBE		1	
38	00 0820 425 0	INNER GUARD TUBE		1	7)
39	00 0917 283 0	BACK-UP RING		1	7)
40	00 0818 855 1	PROTECT.FUNNEL		1	

1) Remarks

VAR.4350 BEI 540. ZAPFWELLE
VAR.4351 BEI 1000. ZAPFWELLE
OPTION
FROM SERIAL NO. 00500773

2) Remarks

BEI 540. ZAPFWELLE

3) Remarks

BEI 1000. ZAPFWELLE

4) Remarks

at 540. P.T.O. shaft

5) Remarks

standard profile (6T.)

6) Remarks

VIELKEILPROFIL (21T.)

UNIVERSAL DRIVE SHAFT WITH OVER-RUN CLUTCH 1)

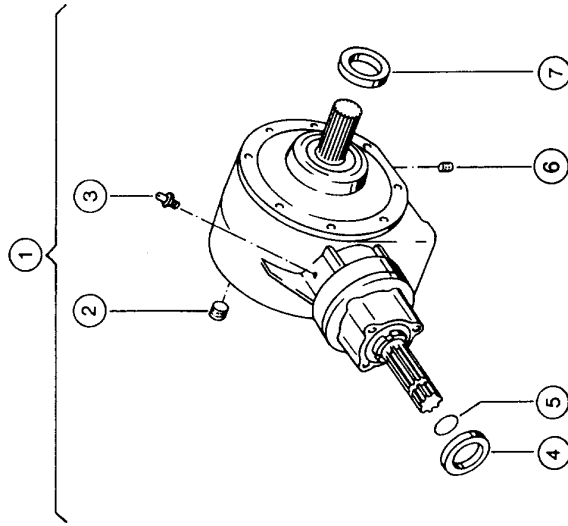
7) Remarks

8) Remarks

machine side

3

Rollant 34



CLH AS

GEAR BOX

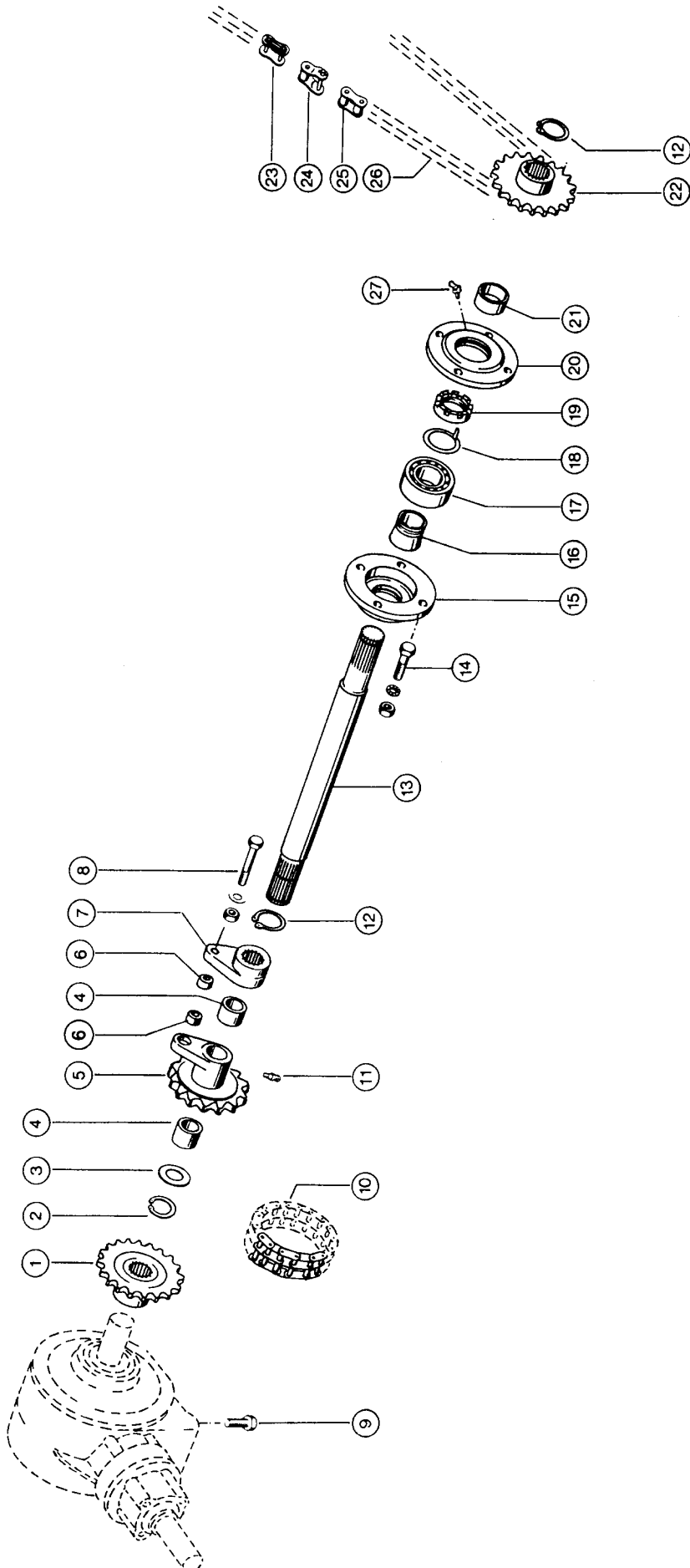
Pos.	Part No.	Description	Dimension	Quantity	Conditions
1	00 0819 610 0	GEARBOX ASSY.	S	1	1)
1	00 0818 950 1	GEARBOX ASSY.		1	2)
1	00 0819 615 0	GEARBOX ASSY.	S	1	3)
1	00 0818 970 0	GEARBOX ASSY.		1	4)
2	00 0238 082 0	SCREW PLUG	M24X1,5	1	
3	00 0179 842 0	BREATHER PLUG	0,03-0,05 BAR-M10X1 KEG-	1	
4	00 0233 200 0	SHAFT SEAL	BASL 48X 68X10	1	
5	00 0943 229 0	O-RING	40X1,5 -N	1	
6	00 0239 263 0	MAGNETIC FILTER BOLT	M14X1,5	1	5)
6	00 0238 099 0	SCREW PLUG	M14X1,5	1	6)
7	00 0244 736 1	SHAFT SEAL	BAUMX7 A50X65X8	1	

1) Remarks	at 540. P.T.O. shaft from No. 00500623
2) Remarks	BEI 540. ZAPFWELLE BIS NR. 00500622
3) Remarks	BEI 1000. ZAPFWELLE AB NR. 00500623
4) Remarks	BEI 1000. ZAPFWELLE BIS NR. 00500622
5) Remarks	from No. 00500623
6) Remarks	BIS NR. 00500622

4

CLHHS

ROLLANT 34



109312

Rollant 34

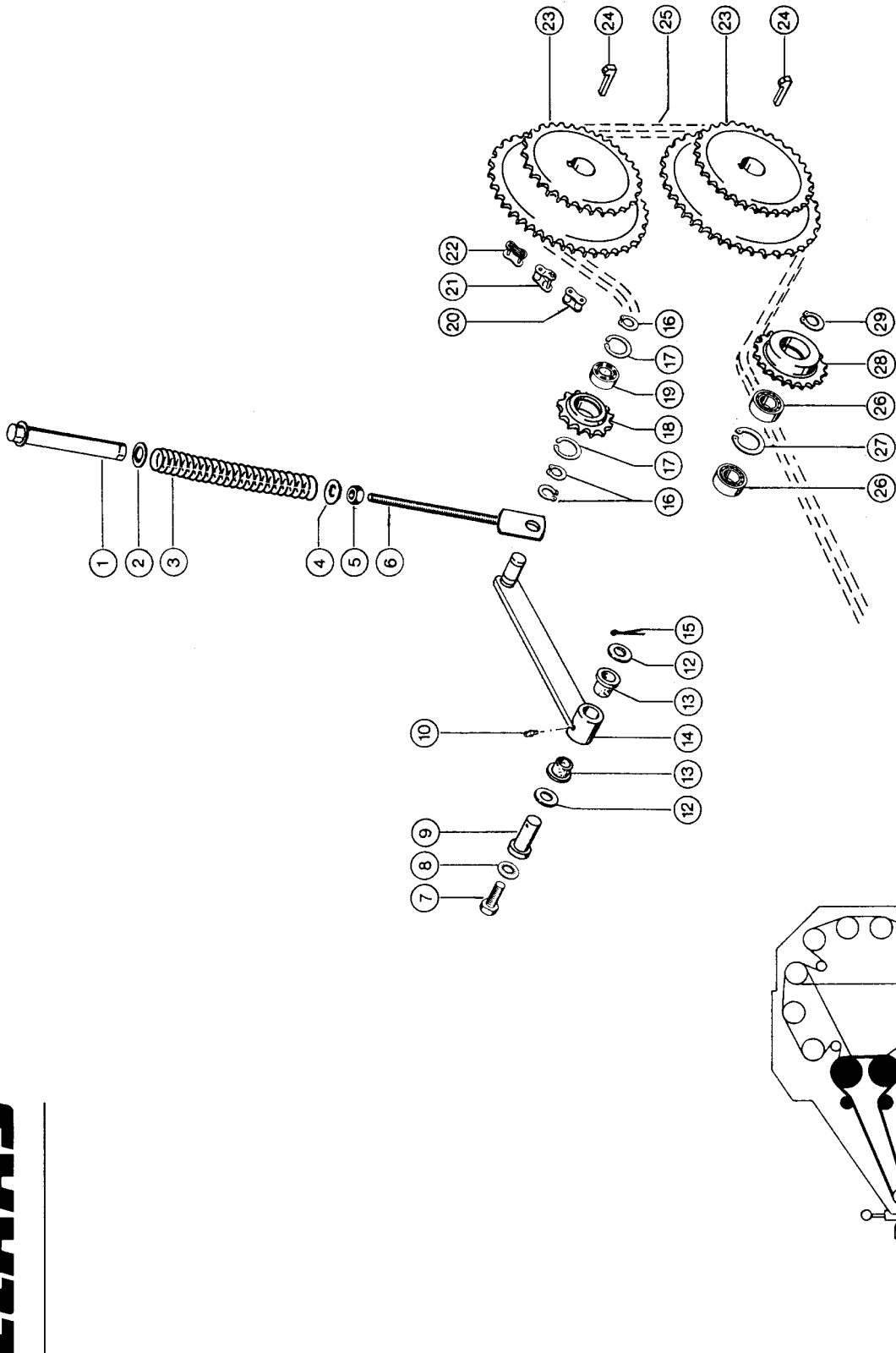
MAIN DRIVE

Pos.	Part No.	Description	Dimension	Quantity	Conditions
1	00 0819 287 0	SPROCKET	25,4 TLG 16Z	1	
2	00 0235 164 0	CIRCLIP	35X1,5	1	
3	00 0234 385 0	BACK-UP WASHER	S 35X45	1	
4	00 0808 021 0	BUSHING		2	
5	00 0819 522 0	SPROCKET	16 Z.	1	1)
5	00 0820 136 0	SPROCKET ASSY.	16 Z.	1	2)
6	00 0810 709 0	SHEAR BUSHING	25X10,3	2	1)
6	00 0807 577 1	SHEAR BUSHING		2	2)
7	00 0819 526 0	COUPLER		1	1)
7	00 0820 135 0	COUPLER ASS.		1	2)
8	00 0235 535 0	HEXAGON HEAD BOLT	M10X55	1	1)
8	00 0236 171 0	HEXAGONAL NUT	M10	1	3)
8	00 0239 388 0	CONTACT WASHER	A10-10,2X22,25X1,6	1	3)
8	00 0238 961 0	HEXAGON HEAD BOLT	M 8X55	1	2)
8	00 0236 170 0	HEXAGONAL NUT	M8	1	2)
8	00 0239 393 1	CONTACT WASHER	B 8 -8.2X22X1,9	2	2)
9	00 0239 049 0	HEXAGON HEAD BOLT	M12X30-MKL	4	
10	00 0819 284 0	ROLLER CHAIN	16B-2X16	1	
10	00 0819 285 0	CONNECTING LINK	E-16B-2	1	
11	00 0236 942 0	GREASE NIPPLE	A S6X1	1	
12	00 0235 168 0	CIRCLIP	45X1,75	2	
13	00 0819 521 0	SHAFT	D50X504	1	
14	00 0235 553 0	HEXAGON HEAD BOLT	M12X45	4	
14	00 0236 172 0	HEXAGONAL NUT	M12	4	
14	00 0215 006 0	CONTACT WASHER	12,4X24X1,8 ERS.D.23938	4	
15	00 0818 784 1	BEARING SHELL		1	
15	00 0177 309 0	FELT STRIP	5X 7X1400	1	
16	00 0235 882 0	TAPER LOCK SLEEVE	H 210 -45X35-M50X1, 5-O.M	1	
17	00 0239 123 0	SPHERIC.ROLL.BEAR	20210 KTN9/C3	1	
18	00 0610 338 0	LOCKING PLATE		1	
19	00 0610 359 1	SLOTTED NUT	M50X1,5	1	
20	00 0818 785 0	BEARING SHELL		1	
20	00 0177 309 0	FELT STRIP	5X 7X1400	1	
21	00 0818 782 2	SPACER BUSH	54X5X19	1	
22	00 0819 991 0	SPROCKET	19 Z. 25,40 TLG	1	4)
22	00 0818 857 0	SPROCKET	17 Z. 25,40 TLG	1	5)
23	00 0665 016 1	LOCKING LINK	E-16B-1	1	
24	00 0665 017 0	CHAIN LOCK BEND.	L-16B-1	1	
25	00 0665 021 0	CHAIN INNER LINK	B-16B-1	1	
26	00 0820 119 1	ROLLER CHAIN	16B-1X143 E-L	1	
27	00 0236 943 0	GREASE NIPPLE	B S6X1	1	4)
27	00 0236 942 0	GREASE NIPPLE	A S6X1	1	5)

1)	Remarks	from No. 00500823
2)	Remarks	BIS NR. 00500822
3)	Remarks	AB NR. 00500823
4)	Remarks	from No. 00500623
5)	Remarks	BIS NR. 00500622

5

Rollant 34



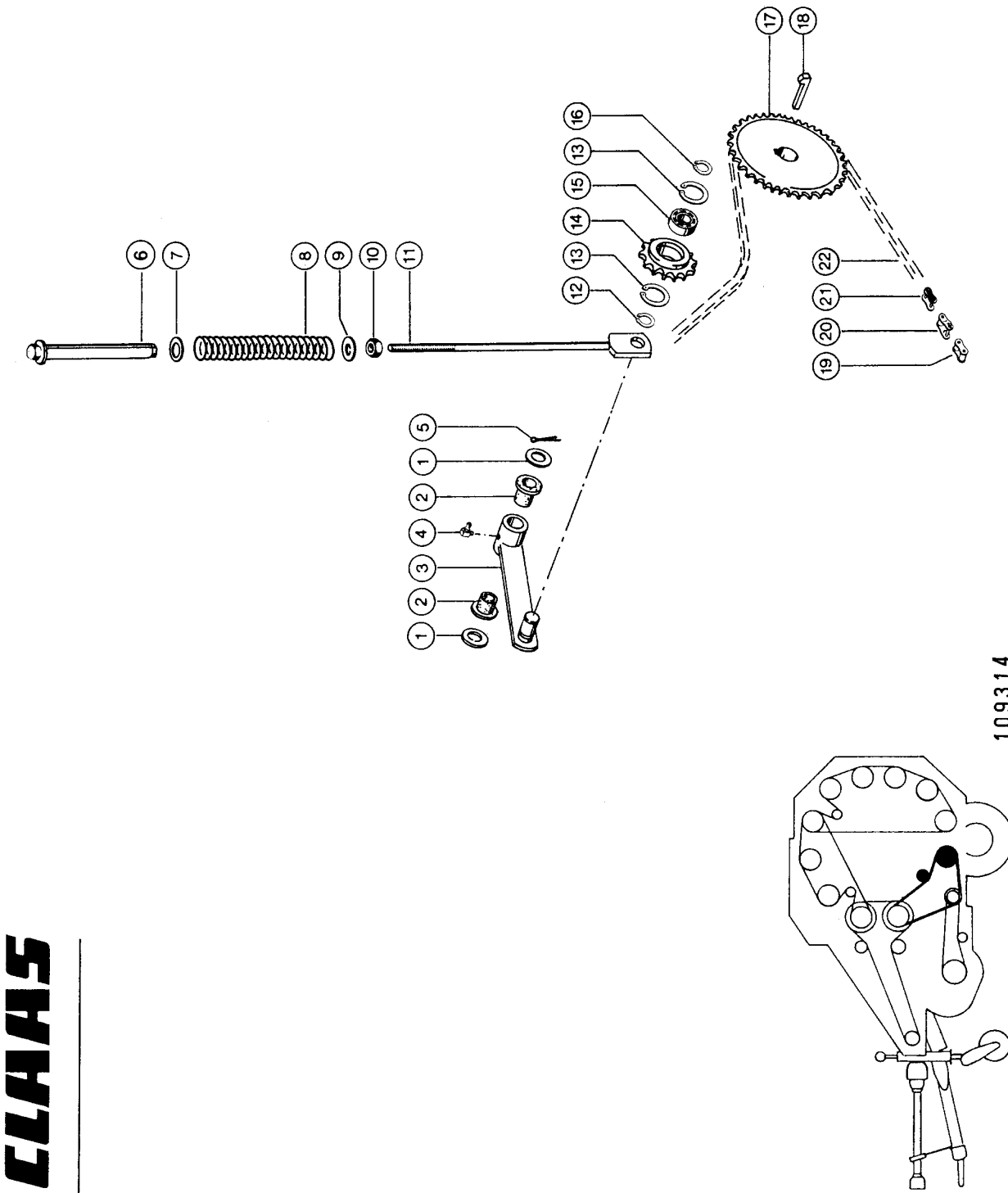
CLHHS

FEED ROLLER DRIVE

Pos.	Part No.	Description	Dimension	Quantity	Conditions
1	00 0818 309 1	SPRING GUIDE		1	
2	00 0819 796 0	PLASTIC WASHER	28,5 -28,5X45X5	1	
3	00 0702 506 0	COMPRESS.SPRING	4,25X32,5X270	1	
4	00 0234 367 0	WASHER	17X42X4	1	
5	00 0236 173 0	HEXAGONAL NUT	M16	1	
6	00 0820 125 0	ROD		1	
7	00 0237 463 0	HEXAGON HEAD BOLT	M16X25	1	
8	00 0239 391 0	CONTACT WASHER	A16	1	
9	00 0820 021 0	PIN	D40X80	1	
10	00 0236 943 0	GREASE NIPPLE	B S6X1	1	
12	00 0234 306 0	WASHER	30,5X42X2	2	
13	00 0008 553 0	BUSHING	30 X 34 X14	2	
14	00 0820 123 0	SUPPORT		1	
15	00 0237 680 0	SPLIT PIN	8X45	1	
16	00 0235 160 0	CIRCLIP	25X1,2	3	
17	00 0235 182 0	CIRCLIP	52X2	2	
18	00 0676 935 1	TENSION PINION	25,4 TLG-13Z	1	
19	00 0235 870 0	GRVD.BALL BEARING	6205-2RS*-25X52X15	1	
20	00 0665 021 0	CHAIN INNER LINK	B-16B-1	1	
21	00 0665 017 0	CHAIN LOCK BEND.	L-16B-1	1	
22	00 0665 016 1	LOCKING LINK	E-16B-1	1	
23	00 0819 269 2	SPROCKET	35 Z. 19,05 TLG	2	
24	00 0244 808 0	GIB-HEAD KEY	12X 8X 56	2	
25	00 0820 119 1	ROLLER CHAIN	16B-1X143 E-L	1	
26	00 0235 869 0	GRVD.BALL BEARING	6207-2RS* -35X72X17	2	
27	00 0235 186 0	CIRCLIP	72X2,5	1	
28	00 0820 118 0	SPROCKET	D148,5X35	1	
29	00 0235 164 0	CIRCLIP	35X1,5	1	

6

Rollant 34



109314

CLAAS

FEED ROLLER DRIVE

Pos.	Part No.	Description	Dimension	Quantity	Conditions
1	00 0234 306 0	WASHER	30,5X42X2	2	
2	00 0008 553 0	BUSHING	30 X 34 X14	2	
3	00 0820 127 0	SUPPORT		1	
4	00 0236 944 0	GREASE NIPPLE	C S6X1	1	
5	00 0235 118 0	SPLIT PIN	6,3X 45	1	
6	00 0818 309 1	SPRING GUIDE		1	
7	00 0819 796 0	PLASTIC WASHER	28,5 -28,5X45X5	1	
8	00 0623 325 2	COMPRESS.SPRING		1	1)
8	00 0629 579 0	COMPRESS.SPRING	5,6 X 36 X272	1	2)
9	00 0234 367 0	WASHER	17X42X4	1	
10	00 0236 173 0	HEXAGONAL NUT	M16	1	
11	00 0819 308 1	ROD	M16	1	
12	00 0235 160 0	CIRCLIP	25X1,2	1	
13	00 0235 181 0	CIRCLIP	47X1,75	2	
14	00 0818 767 0	TENSION PINION	14ZX19,05X11,68	1	
15	00 0236 752 0	GRVD.BALL BEARING	6204-2RS* -20X47X14	1	
16	00 0235 155 0	CIRCLIP	20X1,2	1	
17	00 0819 262 0	SPROCKET	19,05 TLG 35Z	1	
18	00 0244 807 0	GIB-HEAD KEY	12X 8X 50	1	
19	00 0932 153 0	CHAIN INNER LINK	19,05X11,68	1	
20	00 0233 568 0	CHAIN LOCK BEND.	19,05X11,68	1	
21	00 0932 151 1	CHAIN LOCK STR.	19,05X11,68	1	
22	00 0820 121 0	ROLLER CHAIN	19,05 T 112RO	1	

1) Remarks from No. 00500923

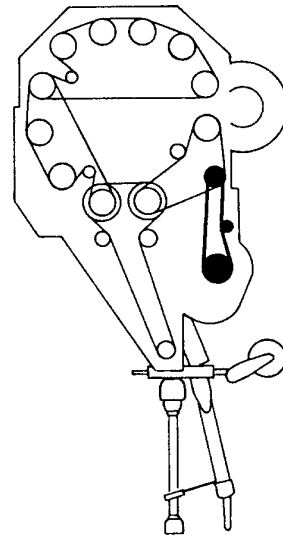
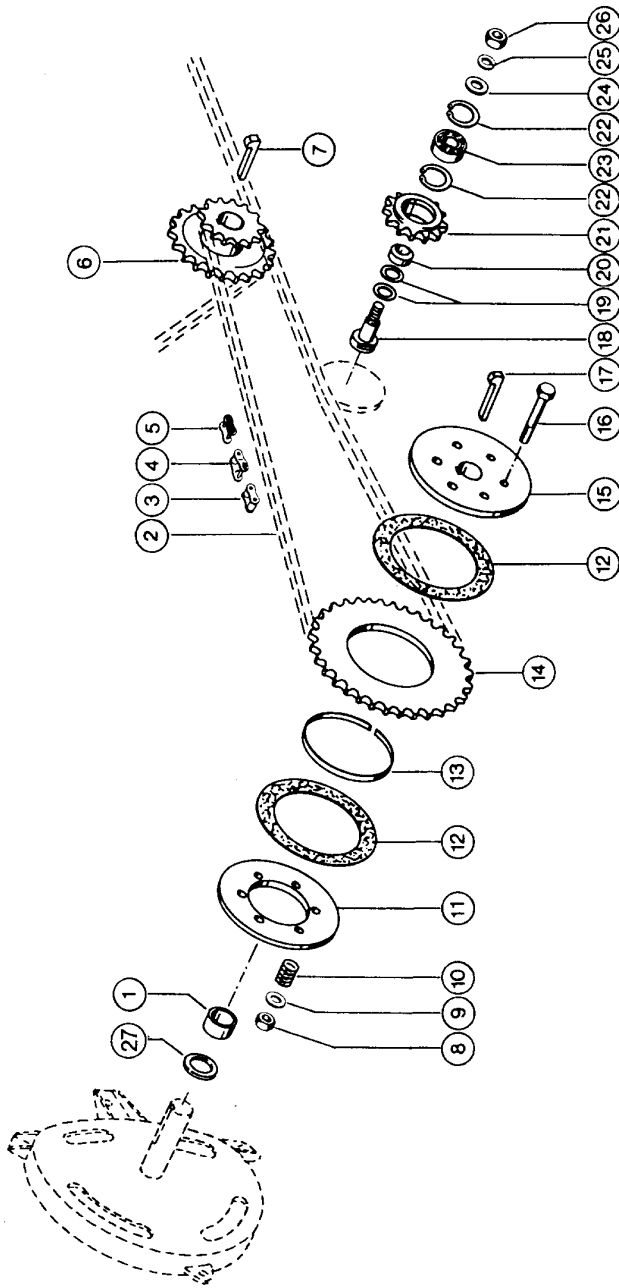
2) Remarks BIS NR. 00500922

7

CLHHS

ROLLANT 34

Rollant 34



109315

PICK-UP DRIVE

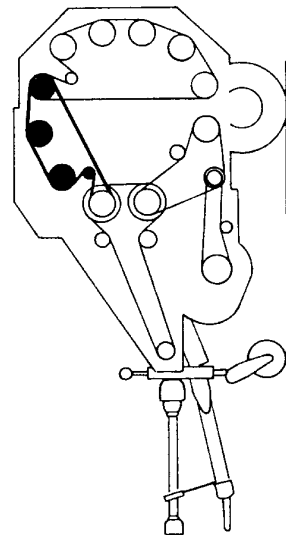
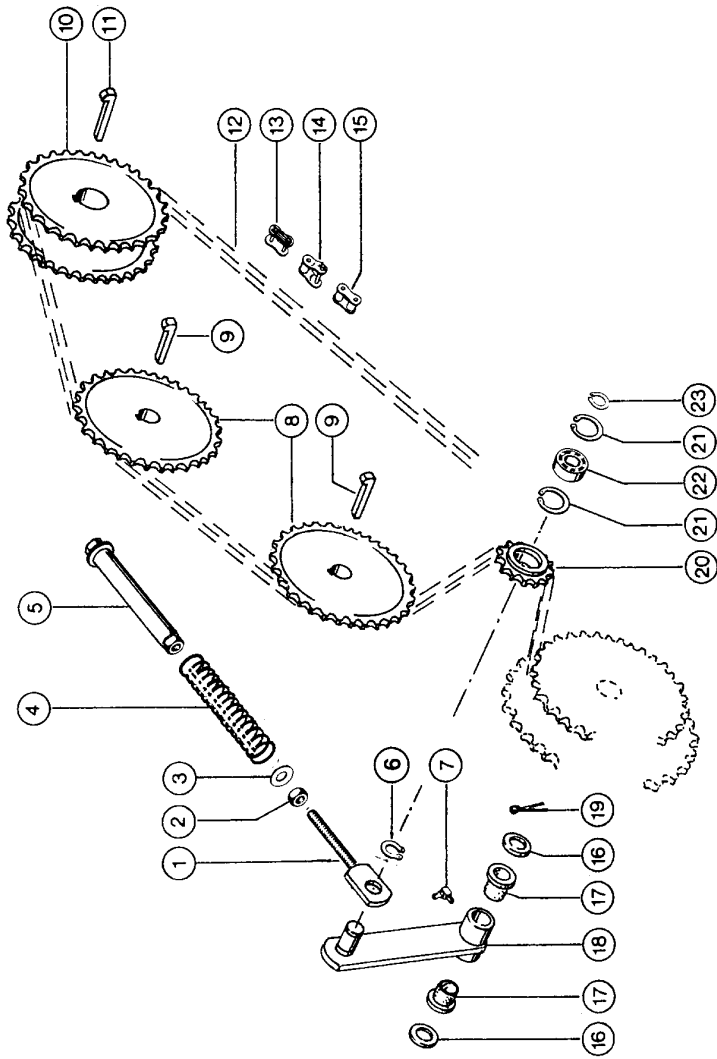
Pos.	Part No.	Description	Dimension	Quantity	Conditions
1	00 0819 168 1	BUSHING	35X19X2	1	
2	00 0819 318 2	ROLLER CHAIN	RE 480X91 E L	1	
3	00 0932 153 0	CHAIN INNER LINK	19,05X11,68	1	
4	00 0233 568 0	CHAIN LOCK BEND.	19,05X11,68	1	
5	00 0932 151 1	CHAIN LOCK STR.	19,05X11,68	1	
6	00 0819 288 0	SPROCKET	15/22 Z.	1	
7	00 0244 808 0	GIB-HEAD KEY	12X 8X 56	1	
8	00 0237 947 0	HEX. NUT WITH CLAMP. PART	M10	6	
9	00 0236 913 2	FLAT WASHER	10-10,5X20X2	6	
10	00 0800 444 1	COMPRESS.SPRING	4,5 X 15 X 30	6	
11	00 0818 058 0	COVER	D185X 8	1	
12	00 0812 687 2	CLUTCH LINING		2	
13	00 0819 809 3	WEAR RING	125,5X129,5X12	1	
14	00 0812 351 2	SPROCKET	38Z X19,05	1	
15	00 0819 810 0	HUB		1	
16	00 0237 808 0	HEXAGON HEAD BOLT	M10X75	6	
17	00 0244 798 0	GIB-HEAD KEY	8X 7X 45	1	
18	00 0819 169 0	PIN	D35,15X68	1	
19	00 0234 295 0	WASHER	21X34X2	2	
20	00 0619 561 0	SPACER RING	35,15X16	1	
21	00 0818 767 0	TENSION PINION	14ZX19,05X11,68	1	
22	00 0235 181 0	CIRCLIP	47X1,75	2	
23	00 0236 752 0	GRVD.BALL BEARING	6204-2RS* -20X47X14	1	
24	00 0235 127 2	WASHER	16 - 17X30X3	1	
25	00 0235 135 1	SPRING WASHER	16- 16,2X27,4X2,8	1	
26	00 0236 173 0	HEXAGONAL NUT	M16	1	
27	00 0234 306 0	WASHER	30,5X42X2	1	1)

1) Remarks

from No. 00500923

8

Rollant 34



1 093 16

CLAVIS

Thank you so much for reading.
Please click the “Buy Now!”
button below to download the
complete manual.



After you pay.

You can download the most
perfect and complete manual in
the world immediately.

Our support email:

ebooklibonline@outlook.com