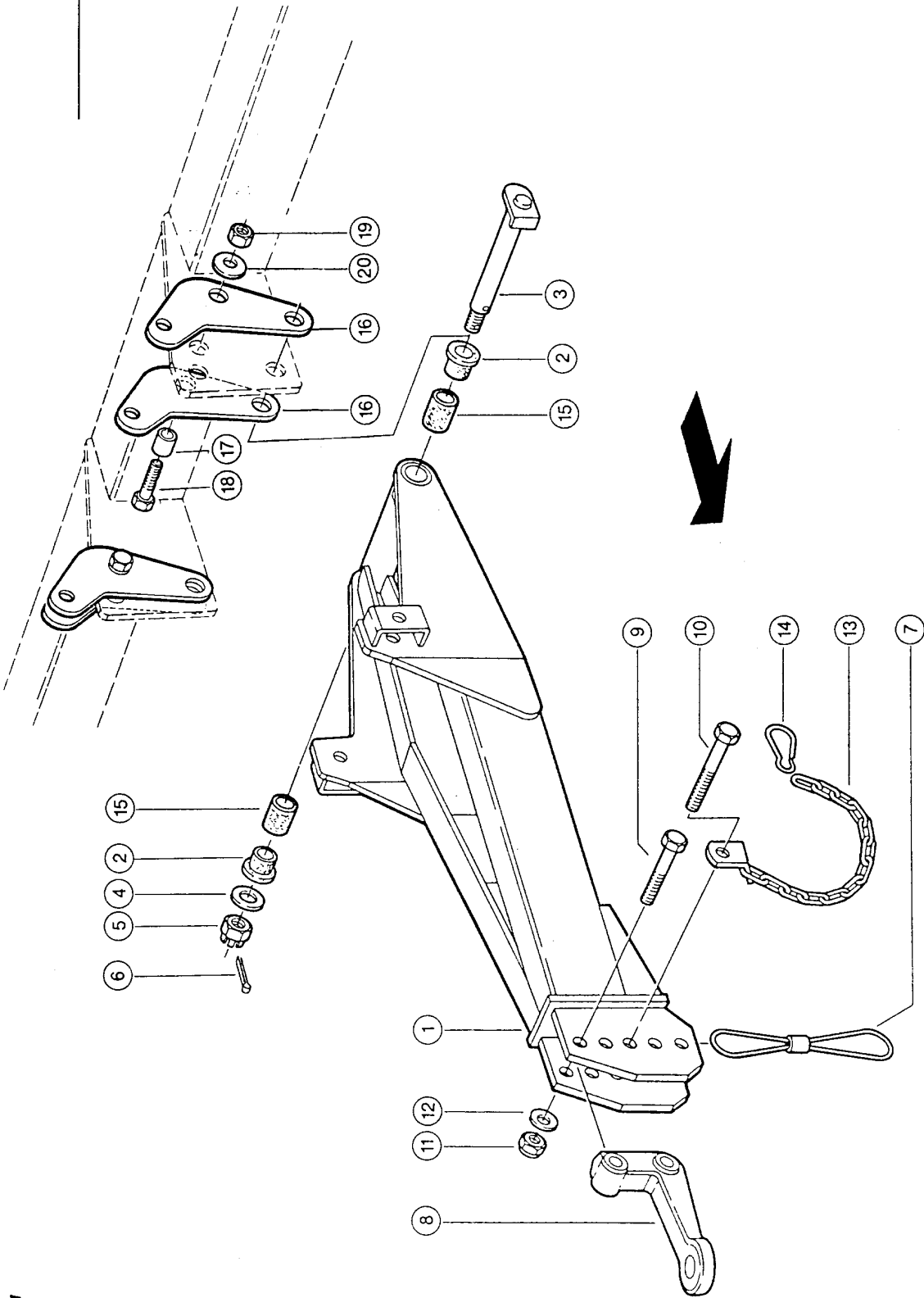


1



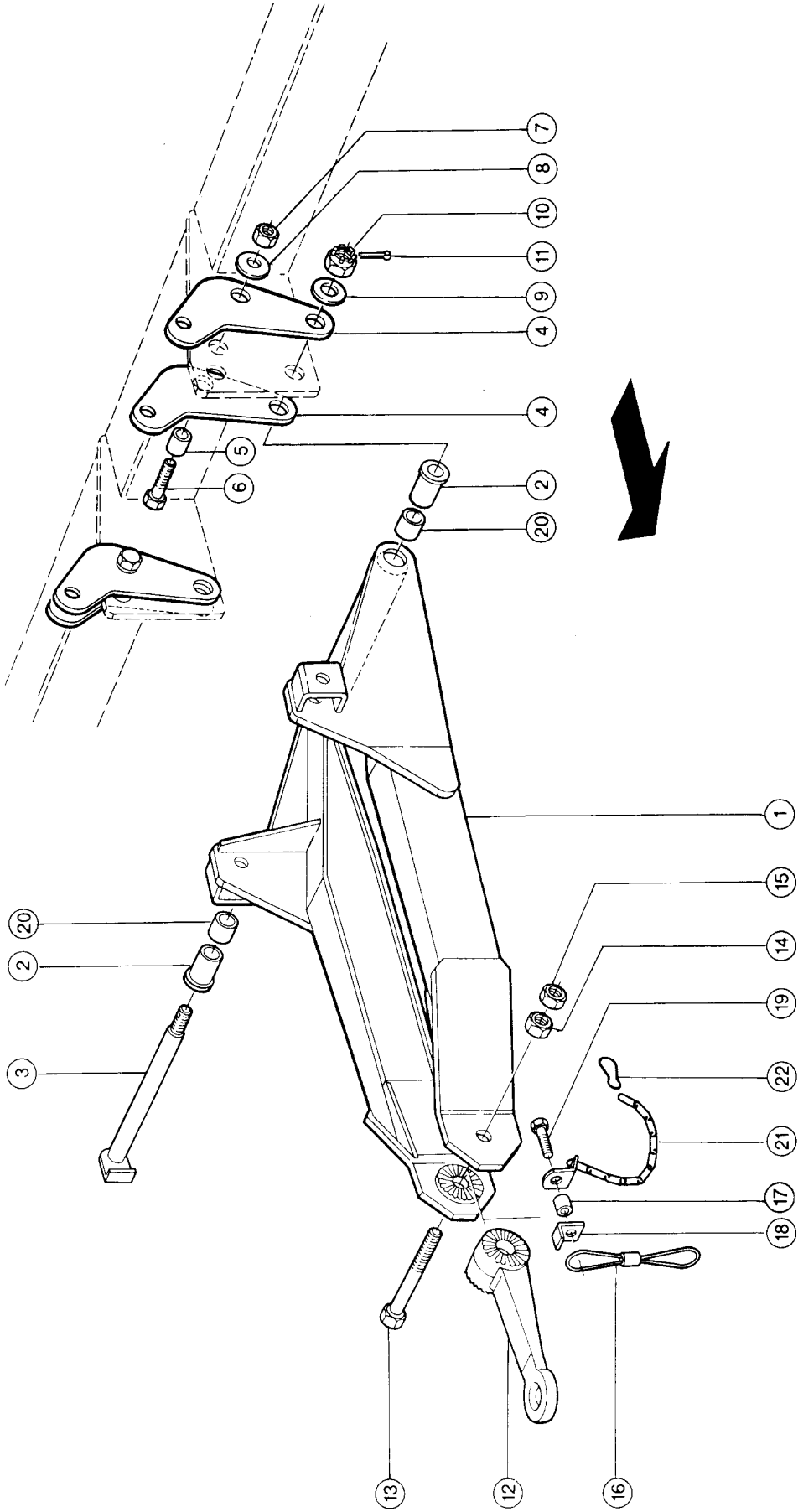
Sprint

CLAAS

ARTICULATED DRAWBAR VAR.5478 + 5731 + 5732

Pos.	Part No.	Description	Dimension	Quantity	Conditions
1	00 0966 474 0	BUCKLING TOW-BAR		1	
2	00 0610 533 1	BUSHING	34 X 38,4X27	2	
3	00 0964 321 0	SHAFT		1	
4	00 0242 668 0	FLAT WASHER	24-25X44X4	1	
5	00 0236 174 0	CASTELLATED NUT	M24X1,5	1	
6	00 0237 028 0	SPLIT PIN	5X40	1	
7	00 0931 555 0	SAFETY ROPE	D8X 640 LG	1	
8	00 0965 686 0	DRAW BAR EYE	B 40 MM	1	
9	00 0242 410 0	HEXAGON HEAD BOLT	M20X120	1	
10	00 0211 186 0	HEXAGON HEAD BOLT	M20X130	1	
11	00 0237 521 0	HEX.NUT	M20	2	
12	00 0233 699 0	CONICAL SPRING WASHER	20 -21X45X5	2	
13	00 0908 918 1	CHAIN		1	
14	00 0233 132 0	CLIP	C 60X6	1	
15	00 0969 368 0	SYNTHETIC BUSH	34 X 38 X25	2	
16	00 0969 740 0	PLATE		4	
17	00 0964 059 0	BUSHING		2	
18	00 0233 968 0	HEXAGON HEAD SCREW	M24X60	2	
19	00 0238 643 0	HEXAGONAL NUT	M24	2	
20	00 0233 967 0	CONICAL SPRING WASHER	24 -25X56X6	2	

2

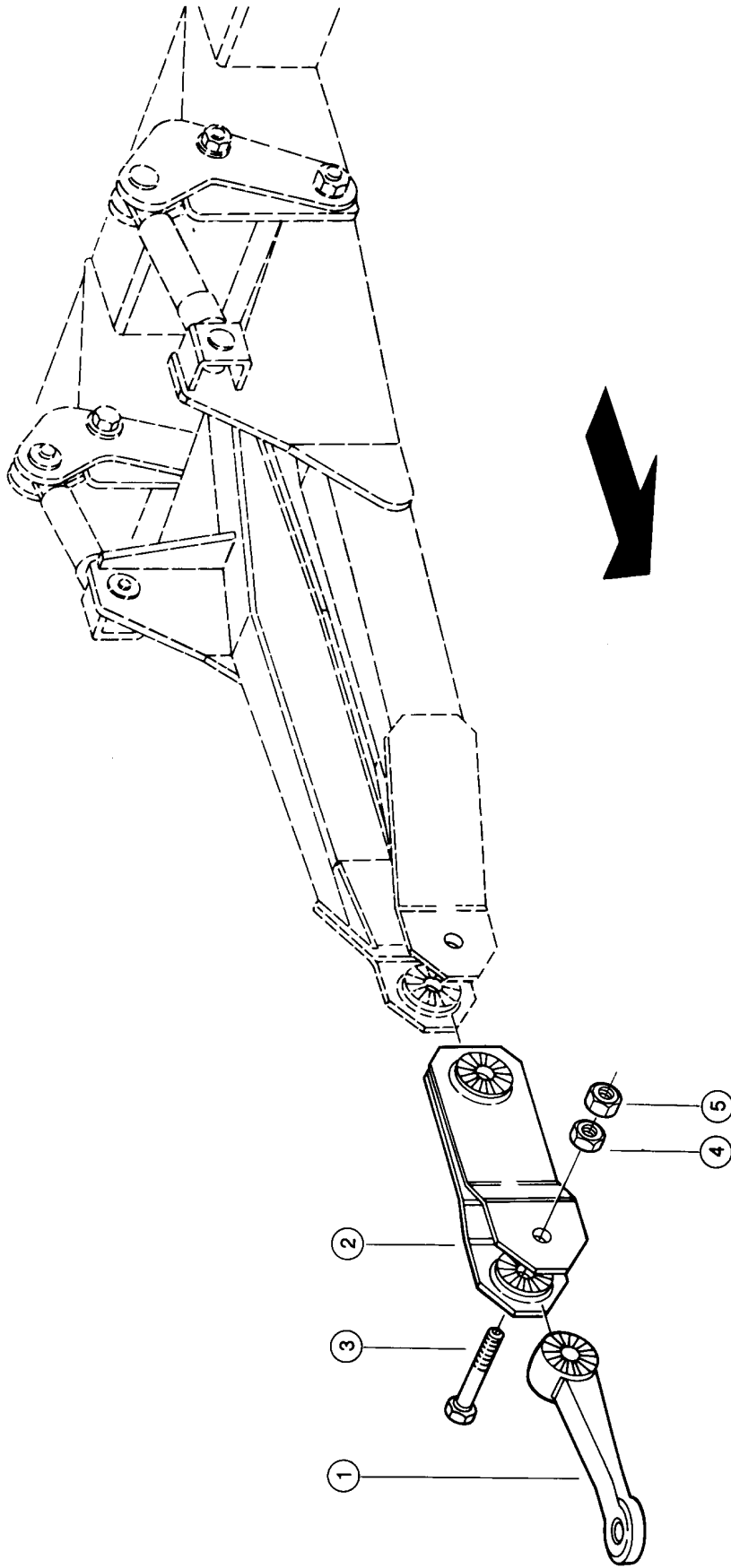


CLAAS

DRAWBAR VAR.5419 + 5732

Pos.	Part No.	Description	Dimension	Quantity	Conditions
1	00 0967 254 1	DRAWBAR	STVZO	1	
2	00 0610 533 1	BUSHING	34 X 38,4X27	2	
3	00 0964 321 0	SHAFT		1	
4	00 0967 156 0	PLATE		4	
5	00 0964 059 0	BUSHING		2	
6	00 0233 968 0	HEXAGON HEAD SCREW	M24X60	2	
7	00 0238 643 0	HEXAGONAL NUT	M24	2	
8	00 0233 967 0	CONICAL SPRING WASHER	24 -25X56X6	2	
9	00 0242 668 0	FLAT WASHER	24-25X44X4	1	
10	00 0236 174 0	CASTELLATED NUT	M24X1,5	1	
11	00 0237 028 0	SPLIT PIN	5X40	1	
12	00 0967 285 0	DRAW BAR EYE	D 40	1	
13	00 0211 241 0	HEXAGON HEAD BOLT	M30X170	1	
14	00 0211 242 0	HEXAGONAL NUT	M30	1	
15	00 0211 243 0	HEXAGONAL NUT	M30	1	
16	00 0931 555 0	SAFETY ROPE	D8X 640 LG	1	
17	00 0904 088 0	BUSHING	12,8X20X12	1	
18	00 0967 431 0	SAFETY SHACKLE		1	
19	00 0237 462 0	HEXAGON HEAD BOLT	M12X40	1	
20	00 0969 368 0	SYNTHETIC BUSH	34 X 38 X25	2	
21	00 0908 918 1	CHAIN		1	
22	00 0233 132 0	CLIP	C 60X6	1	

3



CLAAS

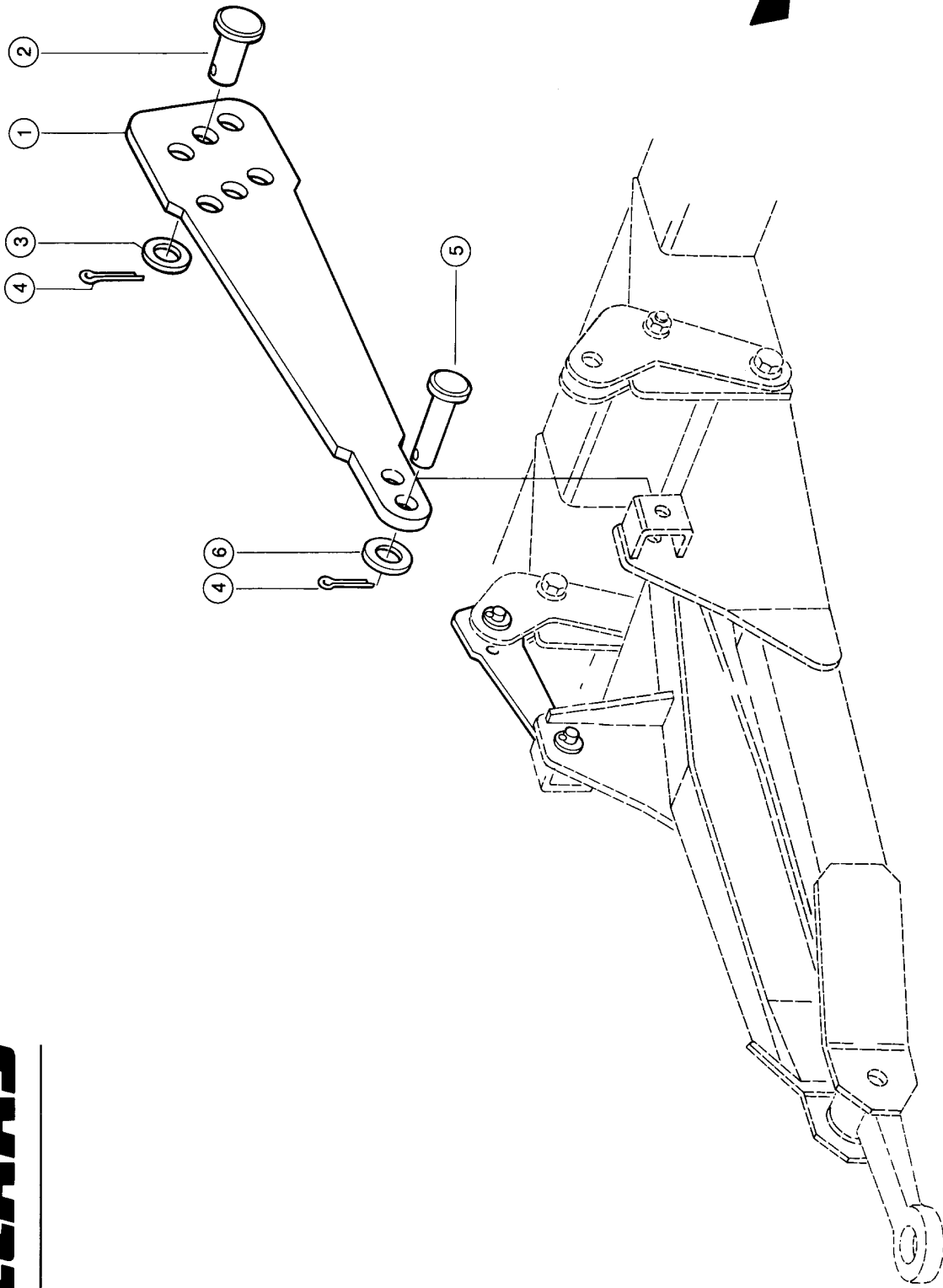
DRAWBAR EXTENSION VAR.5466

Pos.	Part No.	Description	Dimension	Quantity	Conditions
1	00 0969 281 0	DRAW BAR EYE	D 50	1	
2	00 0969 465 0	DRAWBAR EXTENSION		1	
3	00 0211 241 0	HEXAGON HEAD BOLT	M30X170	1	
4	00 0211 242 0	HEXAGONAL NUT	M30	1	
5	00 0211 243 0	HEXAGONAL NUT	M30	1	

4

300G

Sprint

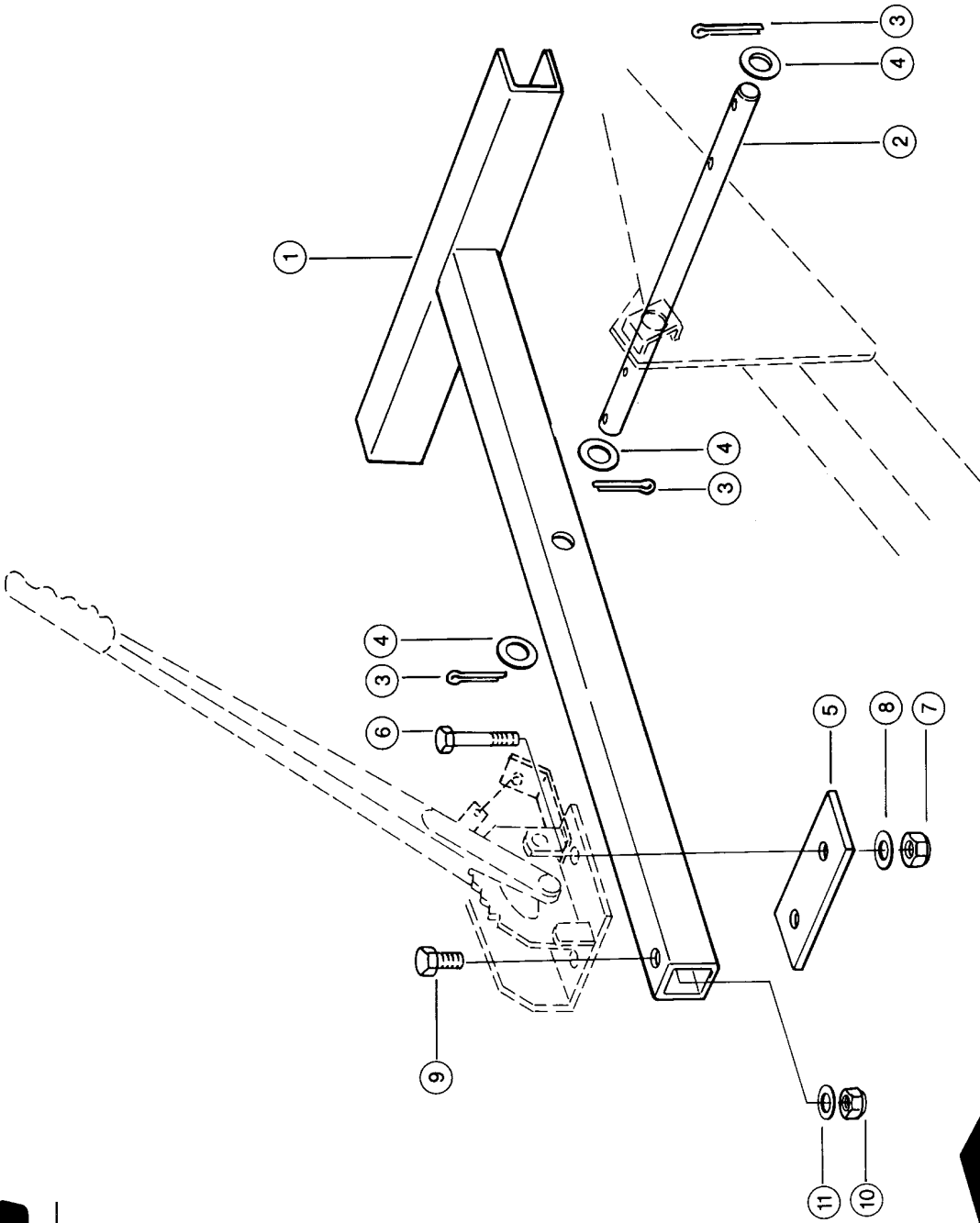


CLAAS

ADJUSTING PLATES VAR.5419 + 5478

Pos.	Part No.	Description	Dimension	Quantity	Conditions
1	00 0960 197 0	PLATE	15X 147X 417	2	
2	00 0233 959 0	PIN WITH HEAD	B-25H11X50X40	2	
3	00 0234 302 0	WASHER	26X42X2	1	
3	00 0234 346 0	WASHER	26 X 42 X3	1	
4	00 0235 097 0	SPLIT PIN	5X36	4	
5	00 0233 960 0	PIN	B22H11X 70X60	2	
6	00 0234 344 0	FLAT WASHER	22-23X37X3	2	

5

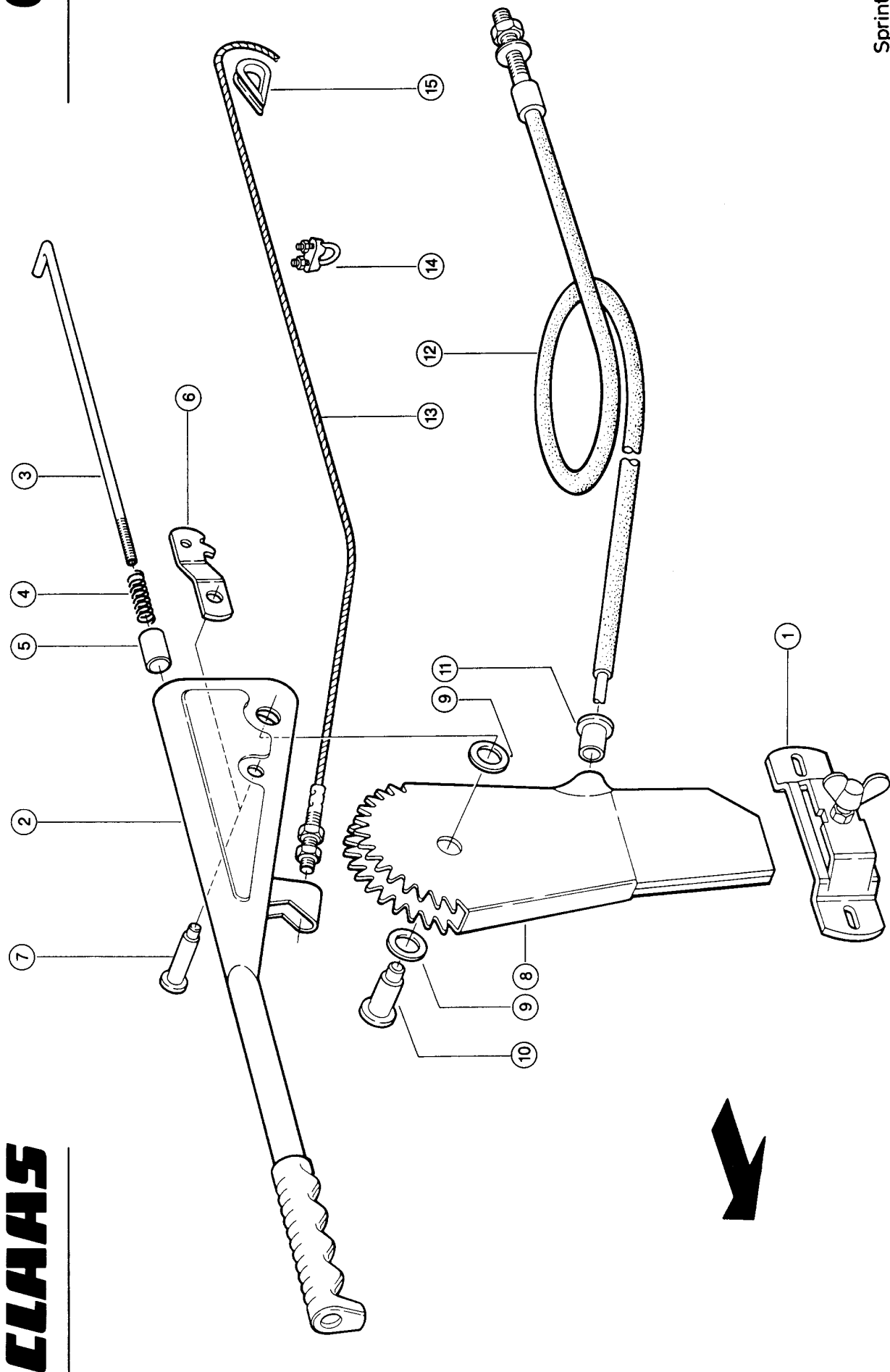


CLAAS

SUPPORT FOR CONTROL LEVERS VAR.5752

Pos.	Part No.	Description	Dimension	Quantity	Conditions
1	00 0961 769 0	CONTROL LEVER		1	
2	00 0961 779 0	BEARING SHAFT	D 22, 330 LANG	1	
3	00 0235 097 0	SPLIT PIN	5X36	4	
4	00 0234 297 0	WASHER	23X34X2	4	
5	00 0944 604 0	GUIDE STRAP	40X 5X 100	1	
6	00 0235 525 0	HEXAGON HEAD BOLT	M8X80	2	
7	00 0238 132 0	LOCK NUT	M8	2	
8	00 0239 387 0	CONTACT WASHER	A8-8,2X18X1,4	2	
9	00 0235 529 0	HEXAGON HEAD BOLT	M10X25	1	
10	00 0237 947 0	HEX. NUT WITH CLAMP. PART	M10	1	
11	00 0239 388 0	CONTACT WASHER	A10-10,2X22,25X1,6	1	

6



Sprint

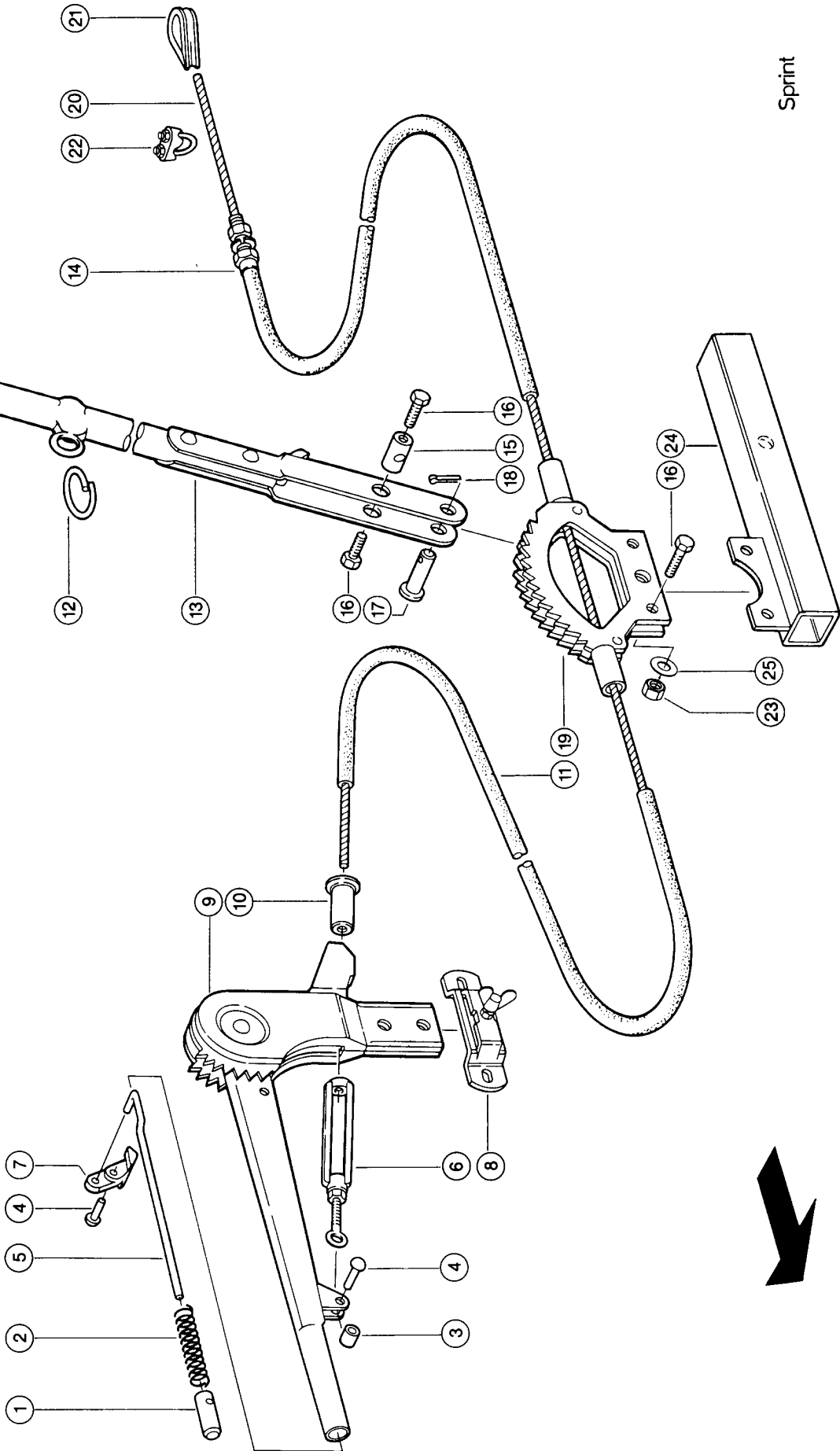
CLAAS

CABLE-OPERATED BRAKE VAR.5564

Pos.	Part No.	Description	Dimension	Quantity	Conditions
0	00 0960 892 0	ROPE OPER.BRAKE	S 8400/ H 5150	1	
1	00 0931 162 1	BRACKET		1	
2	00 0931 668 0	LEVER		1	
3	00 0931 669 0	THRUST ROD		1	
4	00 0931 670 0	COMPRESS.SPRING	98-050.0.92	1	
5	00 0931 671 0	PUSHBUTTON		1	
6	00 0931 672 0	STOP PAWL		1	
7	00 0931 673 0	BEARING PIN		1	
8	00 0931 674 0	SEGMENT		1	
9	00 0931 675 0	WASHER		2	
10	00 0931 676 0	RIVET PIN	04.285.02.04	1	
11	00 0931 677 0	BOWDEN CABLE RETA		1	
12	00 0941 015 0	CABLE SLEEVE	LG= 5150 MM	1	
13	00 0941 014 0	ROPE	8400 LG	1	
14	00 0509 212 0	WIRE ROPE CLAMP	A 5-M5X12X13X25	3	
15	00 0238 340 0	THIMBLE	A 5	1	
15	00 0931 630 1	DECAL	3,6 T	1	
15	00 0965 086 0	DECAL	4T	1	
15	00 0965 069 0	DECAL	0,8T	1	
15	00 0931 141 1	DECAL	ACHSLAST 3,2 TO	1	

7

CLAAS



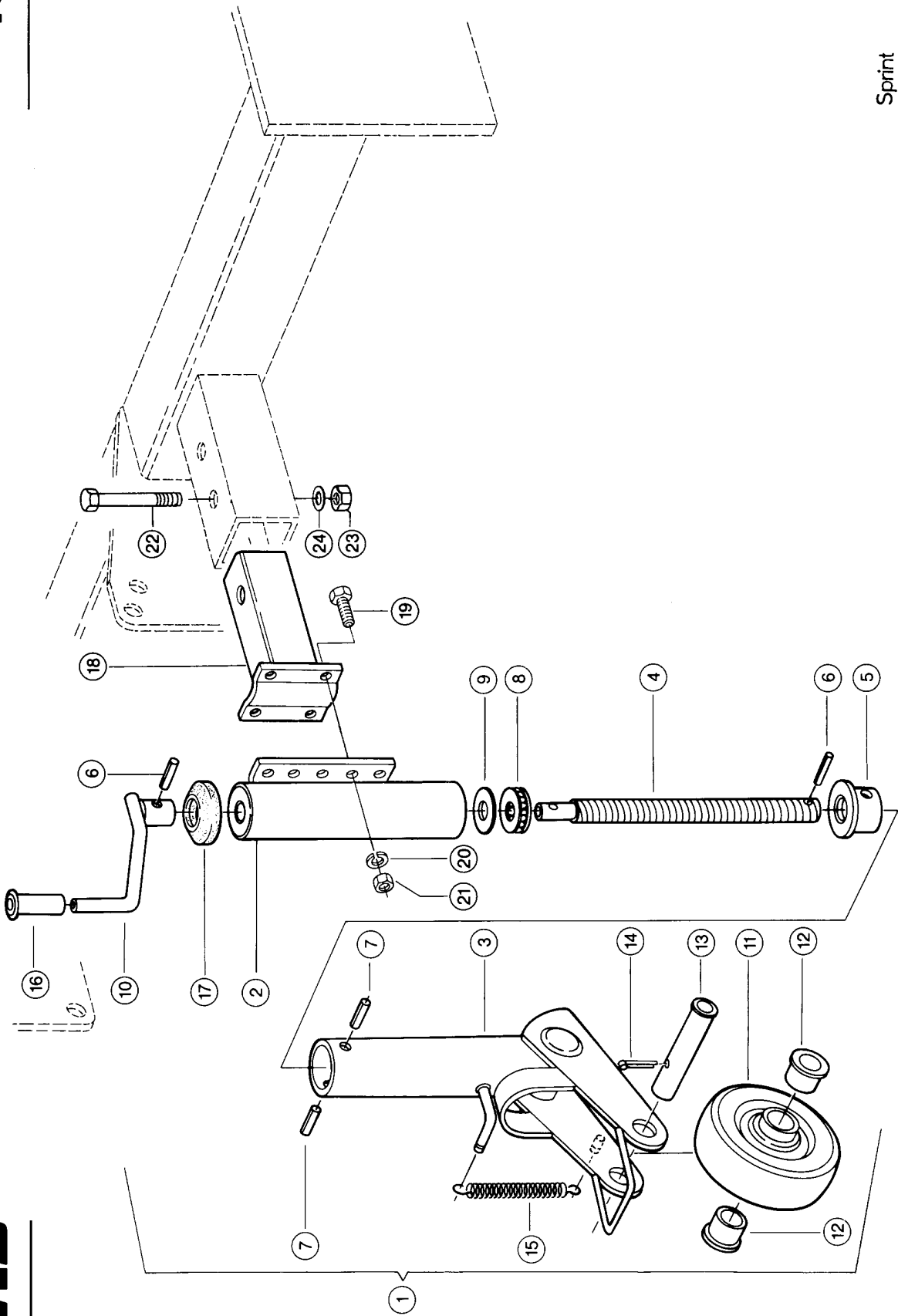
Sprint

BREAK-AWAY BRAKE - BELGIUM VAR.5565

Pos.	Part No.	Description	Dimension	Quantity	Conditions
0	00 0960 888 1	BRAKE	TYP T34/C	1	
1	00 0941 877 0	PUSHBUTTON	D 13	1	
2	00 0941 878 0	COMPRESS.SPRING	1,25X 12 X142	1	
3	00 0628 232 0	SPACER TUBE		1	
4	00 0236 634 0	1/2 ROUND RIVET	6 X 23	2	
5	00 0941 879 0	NOTCHED ADJUSTER		1	
6	00 0941 880 0	TURNBUCKLE	M 8	1	
7	00 0941 881 0	STOP PAWL		1	
8	00 0931 162 1	BRACKET		1	
9	00 0941 882 0	BRAKE LEVER		1	
10	00 0941 883 0	RECEIVING PIECE		1	
11	00 0941 884 0	OUTER BOWDEN CABL	L=1800 MM	1	
12	00 0941 885 0	RING		1	
13	00 0941 886 0	BRAKE LEVER		1	
14	00 0941 397 0	OUTER BOWDEN CABL	L=2900 MM	1	
15	00 0941 888 0	CLAMPING PIECE		1	
16	00 0237 442 0	HEXAGON HEAD BOLT	M8X25	4	
17	00 0211 150 0	PIN	B12H11X 40	1	
18	00 0236 152 0	SPLIT PIN	3,2X22	1	
19	00 0941 889 0	TOOTHED SEGMENT		1	
20	00 0941 890 0	BRAKE CABLE	4,6X 7650	1	
21	00 0238 340 0	THIMBLE	A 5	1	
22	00 0509 212 0	WIRE ROPE CLAMP	A 5-M5X12X13X25	3	
23	00 0236 170 0	HEXAGONAL NUT	M8	2	
24	00 0968 826 0	SUPPORT		1	
25	00 0233 684 0	CONICAL SPRING WASHER	8 -8,4X18X2	2	
25	00 0965 086 0	DECAL	4T	1	
25	00 0931 630 1	DECAL	3,6 T	1	
25	00 0965 069 0	DECAL	0,8T	1	

15

Sprint 300G



CLAAS

Thank you so much for reading.
Please click the “Buy Now!”
button below to download the
complete manual.



After you pay.

You can download the most
perfect and complete manual in
the world immediately.

Our support email:

ebooklibonline@outlook.com