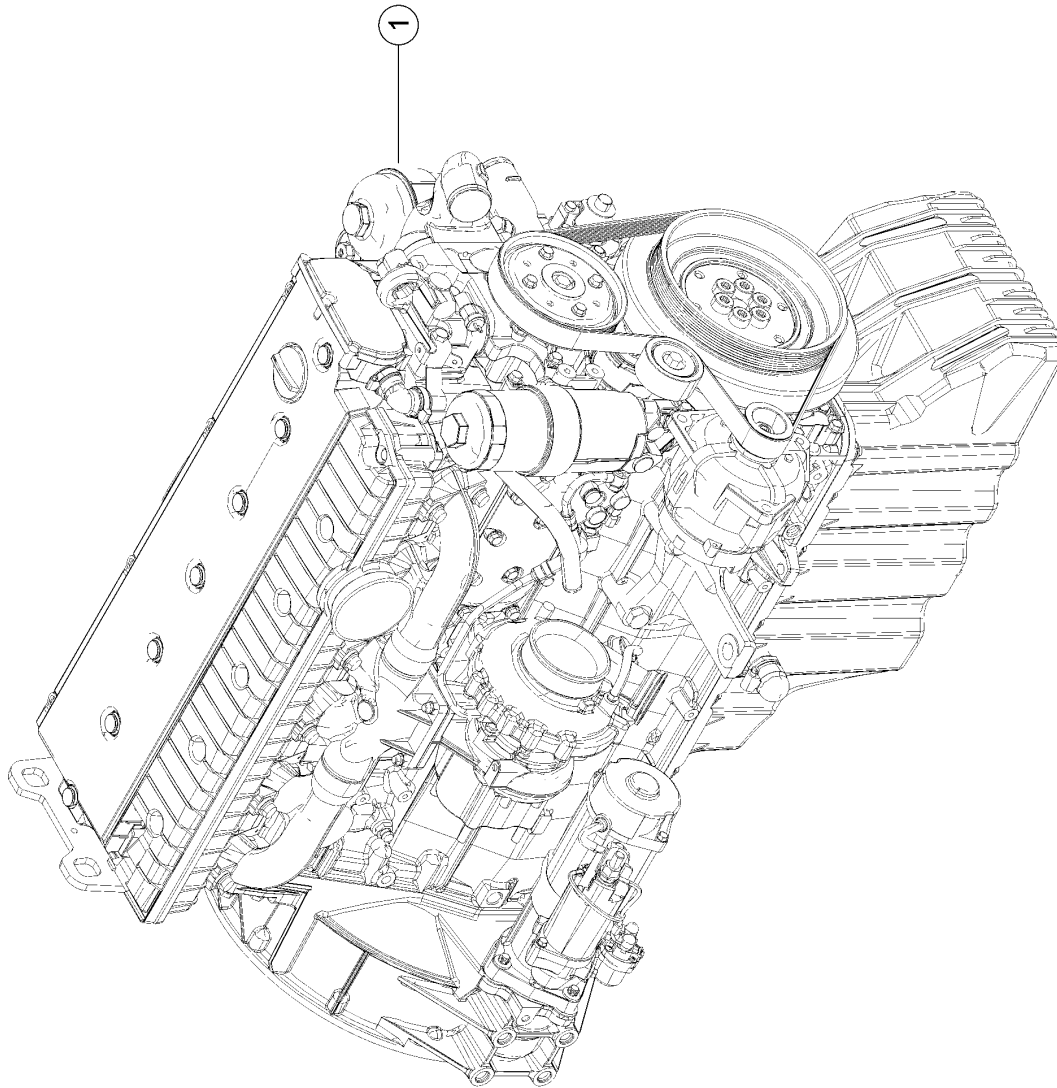


010 COMPLETE ENGINE 1)

Pos.	Part No.	Description	Dimension	Quantity	Conditions
1	00 0781 441 4	ENGINE	OM936LA 260KW STAGE IV	1	2)
1	00 1984 936 0	ENGINE	REMAN OM 936 LA 260KW TI	1	3)
1	00 0781 437 4	ENGINE	OM936LA 260KW STAGE IV	1	4)
1	00 1984 938 0	ENGINE	REMAN OM 936 LA 260KW	1	5)
1)	Equipment	MD_P02_0786 MD_P02_0787	Mercedes-Benz OM936 LA - 260 kW/354 hp (T4) Mercedes-Benz OM936 LA - 260 kW/354 hp (T4) with air compressor		
2)	Equipment	MD_P02_0786	Mercedes-Benz OM936 LA - 260 kW/354 hp (T4)		
3)	Equipment Remarks	MD_P02_0786	Mercedes-Benz OM936 LA - 260 kW/354 hp (T4) Exchange / Reman; not for US		
4)	Equipment	MD_P02_0787	Mercedes-Benz OM936 LA - 260 kW/354 hp (T4) with air compressor		
5)	Equipment Remarks	MD_P02_0787	Mercedes-Benz OM936 LA - 260 kW/354 hp (T4) with air compressor Exchange / Reman; not for US		



010 COMPLETE ENGINE 1)

Pos.	Part No.	Description	Dimension	Quantity	Conditions
1	00 0773 719 0	ENGINE	OM926LA 240KW TIER3	1	2)
1	00 0773 720 0	ENGINE	OM926LA 240KW TIER3	1	3)

1) Equipment

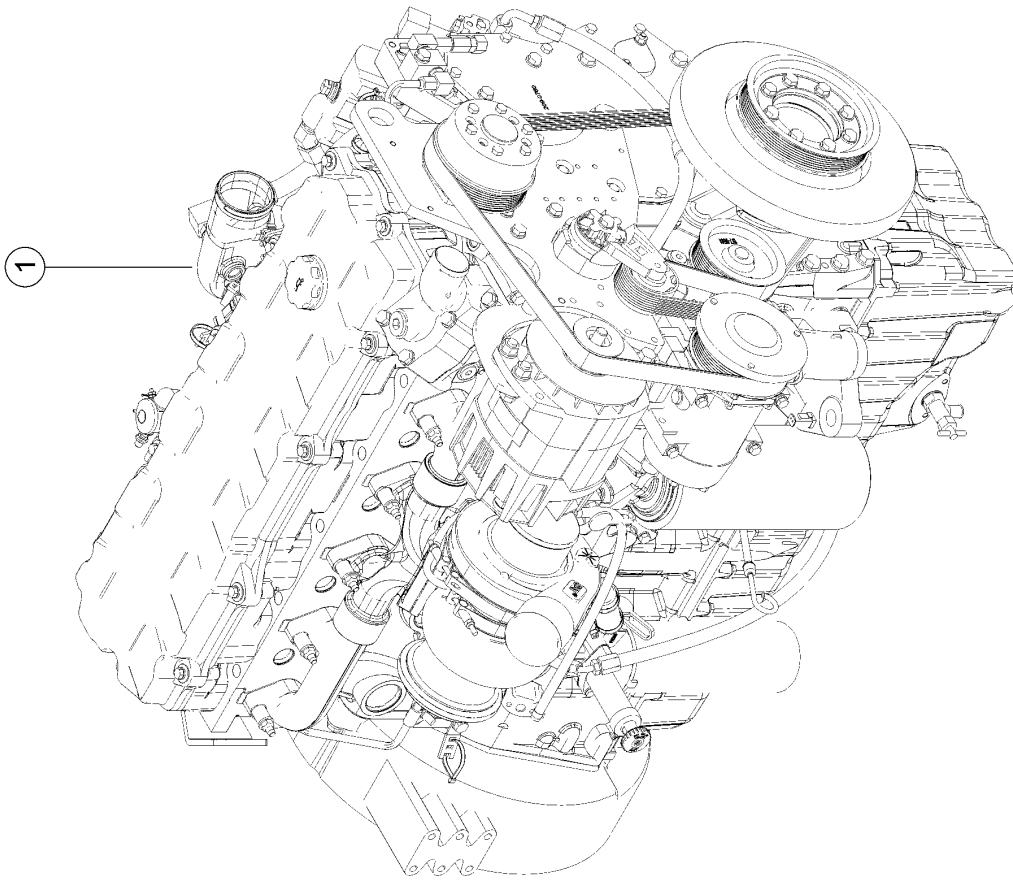
MD_P02_0732	OM926LA EWG240kW
MD_P02_0733	OM926LA K EWG240kW
MD_P02_0745	OM926LA ECE R120 240 kW@2200 rpm Tier 3 / Stage IIIA
MD_P02_0746	OM926LA DL compr. ECE R120 240 kW@2200 rpm Tier 3 / Stage IIIA

2) Equipment

MD_P02_0732	OM926LA EWG240kW
MD_P02_0745	OM926LA ECE R120 240 kW@2200 rpm Tier 3 / Stage IIIA

3) Equipment

MD_P02_0733	OM926LA K EWG240kW
MD_P02_0746	OM926LA DL compr. ECE R120 240 kW@2200 rpm Tier 3 / Stage IIIA



010 COMPLETE ENGINE 1)

Pos.	Part No.	Description	Dimension	Quantity	Conditions
1	00 0799 939 0	ENGINE	C9 261KW, 2100RPM, LRC SA	1	2)
1	00 0799 940 0	ENGINE	C9 261KW, 2100RPM, LRC, S	1	3)

1) Equipment

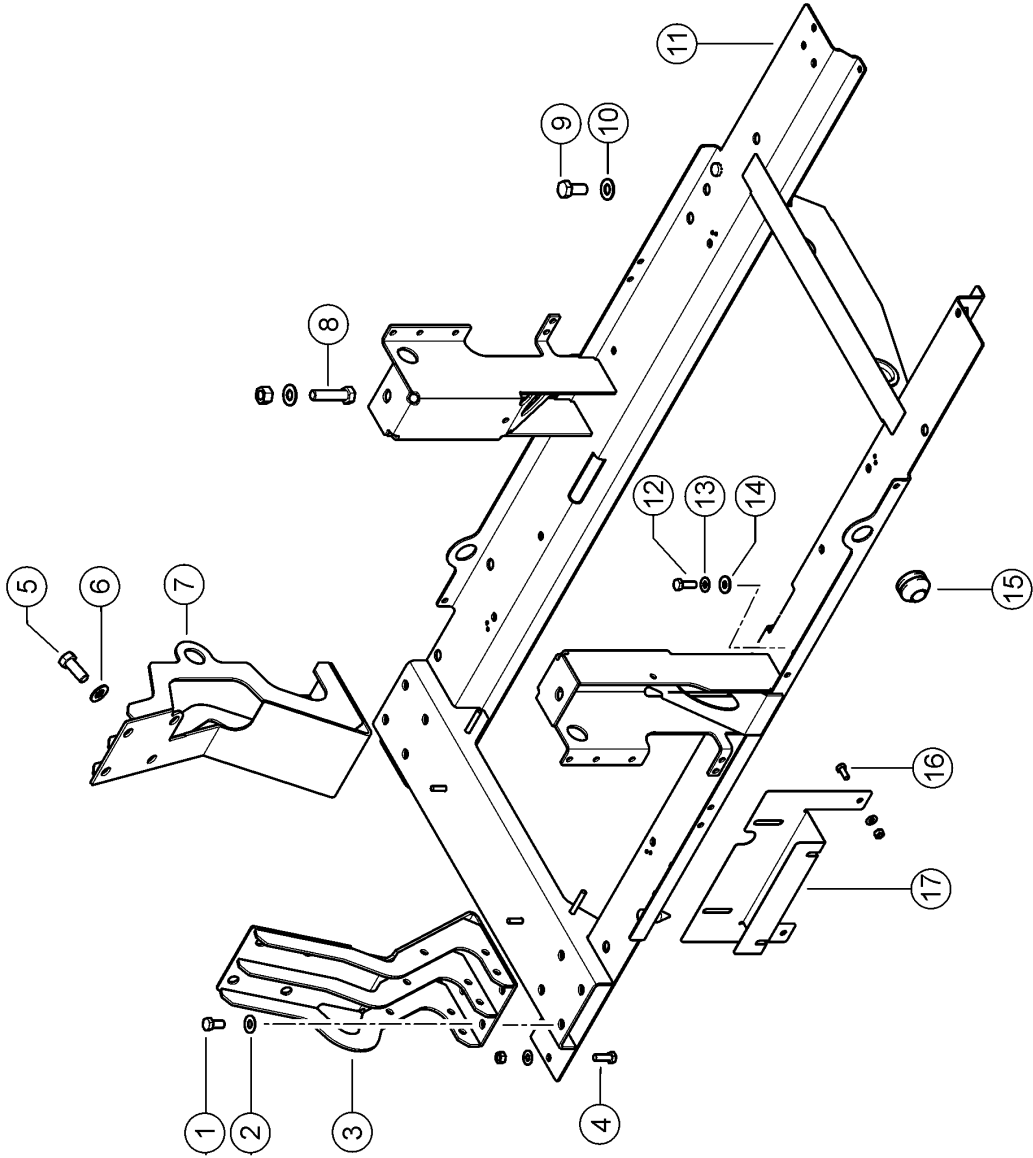
MD_P02_0535	0535_C9 ECE R120 278kW T3
MD_P02_0536	C9 DL-compr. ECE R120 278 kW@1900 rpm Tier 3 / Stage IIIA
MD_P02_0655	CAT C9 engine (EWG258kW/ECE240kW) without air compressor
MD_P02_0656	Caterpillar C9 261 kW/355 hp with air compressor

2) Equipment

MD_P02_0535	0535_C9 ECE R120 278kW T3
MD_P02_0655	CAT C9 engine (EWG258kW/ECE240kW) without air compressor

3) Equipment

MD_P02_0536	C9 DL-compr. ECE R120 278 kW@1900 rpm Tier 3 / Stage IIIA
MD_P02_0656	Caterpillar C9 261 kW/355 hp with air compressor



100 ENGINE SUSPENSION 1)

Pos.	Part No.	Description	Dimension	Quantity	Conditions
1	00 0236 056 0	HEXAGON HEAD BOLT	M12X25	8	
2	00 0239 389 0	CONTACT WASHER	A12	8	
3	00 0781 158 4	SUPPORT	MTU OM936LA RE	1	
4	00 0237 453 0	HEXAGON HEAD BOLT	M10X30	1	
4	00 0239 388 0	CONTACT WASHER	A10-10,2X22,25X1,6	1	
4	00 0236 171 0	HEXAGONAL NUT	M10	1	
5	00 0368 026 0	HEX.HEAD BOLT	M16X40	8	
6	00 0239 391 0	CONTACT WASHER	A16	8	
7	00 0781 155 3	SUPPORT	MTU TIER4F OM936LA 1 LI		
8	00 0233 095 0	HEXAGON HEAD BOLT	M16X65	2	
8	00 0239 391 0	CONTACT WASHER	A16	2	
8	00 0236 173 0	HEXAGONAL NUT	M16	2	
9	00 0236 230 0	HEXAGON HEAD BOLT	M16X35	5	
10	00 0239 391 0	CONTACT WASHER	A16	5	
11	00 0773 788 4	ENGINE MOUNTING		1	
12	00 0237 453 0	HEXAGON HEAD BOLT	M10X30	2	
13	00 0239 388 0	CONTACT WASHER	A10-10,2X22,25X1,6	2	
14	00 0234 326 0	WASHER	11X26X3	2	
15	00 0734 779 0	CABLE RING	C 20-35X50X2	1	
16	00 0236 200 0	HEXAGON HEAD BOLT	M8X20	2	
16	00 0239 387 0	CONTACT WASHER	A8-8,2X18X1,4	2	
16	00 0236 170 0	HEXAGONAL NUT	M8	2	
17	00 0781 297 3	SUPPORT	2X207X376,2	1	

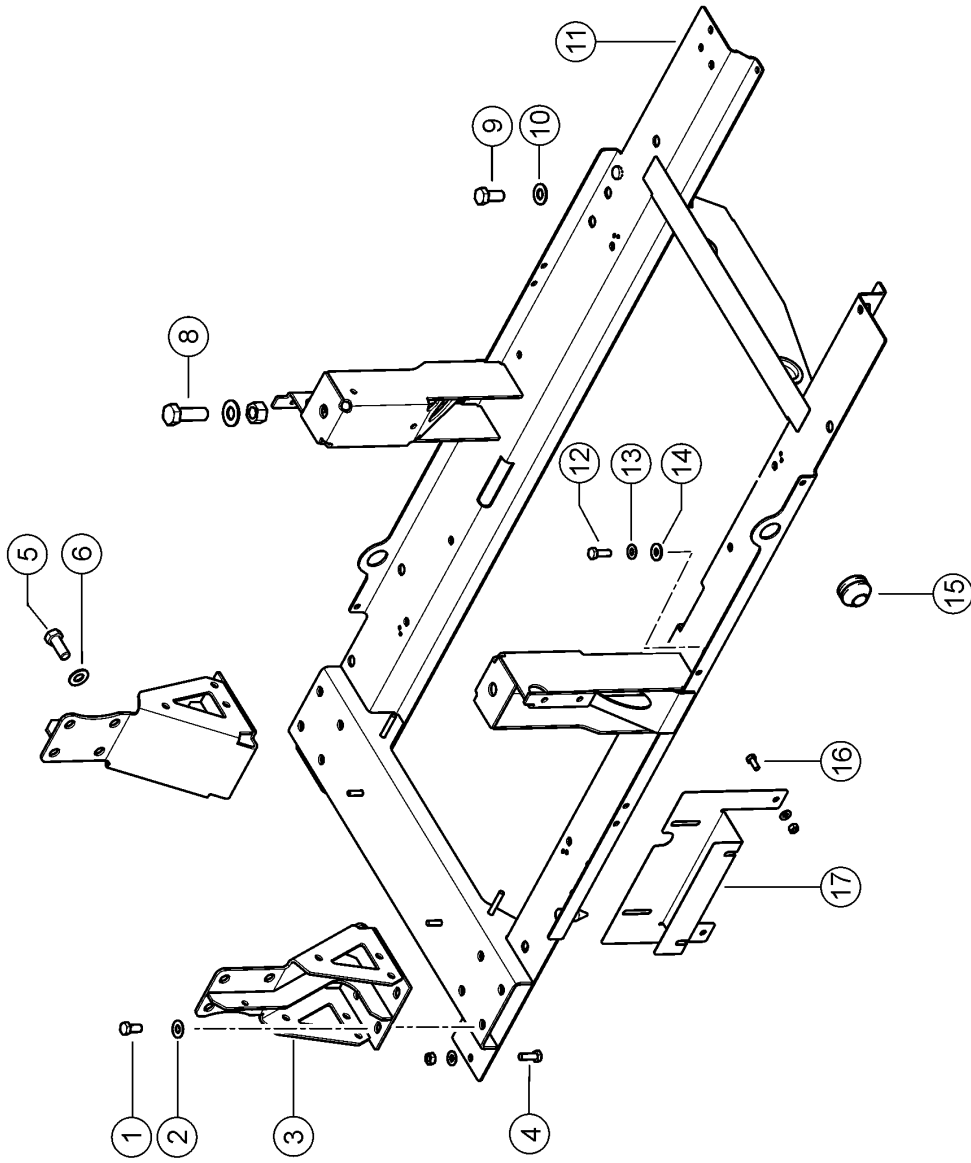
1) Equipment

MD_P02_0786

Mercedes-Benz OM936 LA - 260 kW/354 hp (T4)

MD_P02_0787

Mercedes-Benz OM936 LA - 260 kW/354 hp (T4) with air compressor

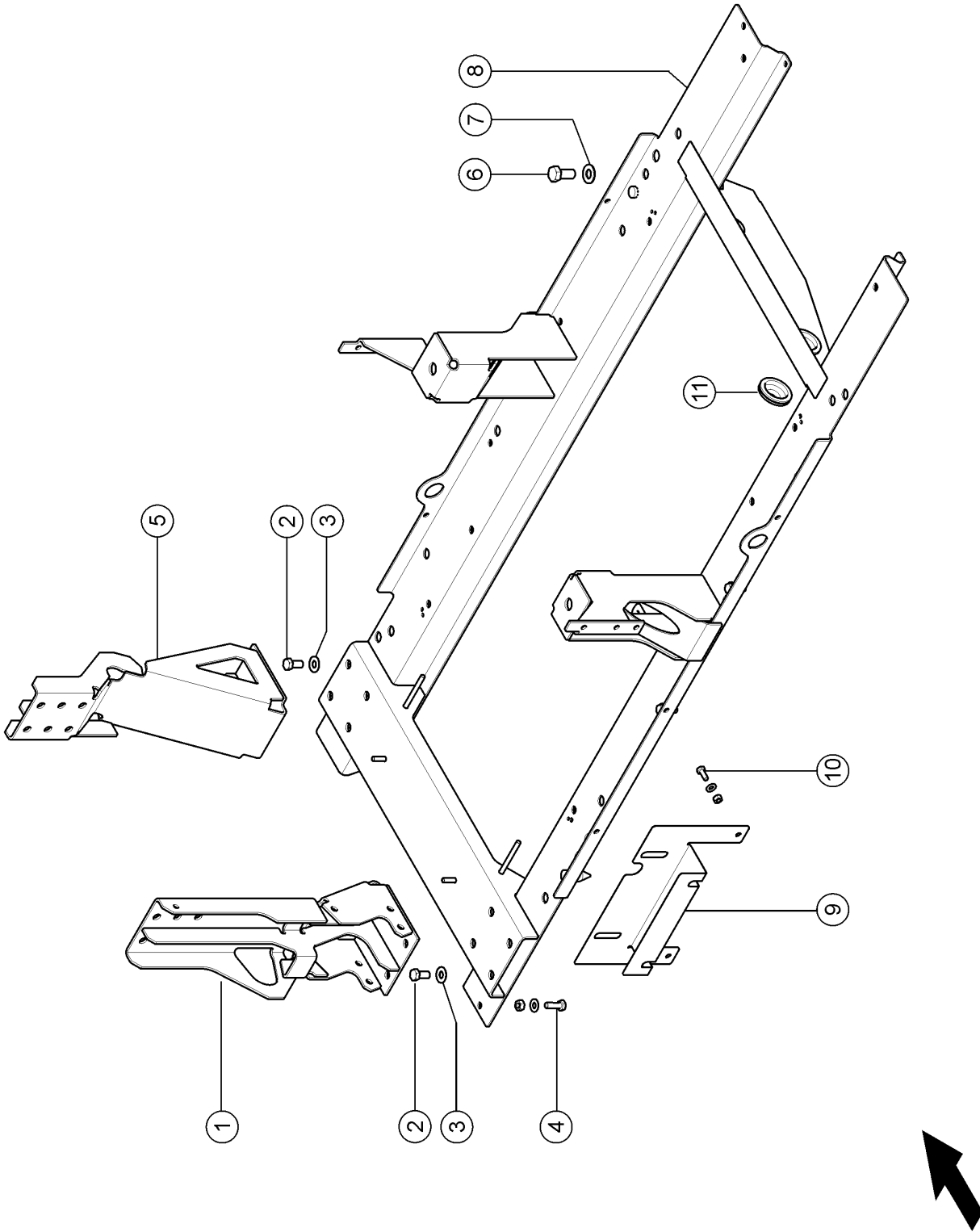


100 ENGINE SUSPENSION 1)

Pos.	Part No.	Description	Dimension	Quantity	Conditions
1	00 0236 056 0	HEXAGON HEAD BOLT	M12X25	8	
2	00 0239 389 0	CONTACT WASHER	A12	8	
3	00 0781 253 1	SUPPORT		2	
4	00 0237 453 0	HEXAGON HEAD BOLT	M10X30	1	
4	00 0239 388 0	CONTACT WASHER	A10-10,2X22,25X1,6	1	
4	00 0236 171 0	HEXAGONAL NUT	M10	1	
5	00 0368 026 0	HEX.HEAD BOLT	M16X40	8	
6	00 0239 391 0	CONTACT WASHER	A16	8	
8	00 0237 591 0	HEX.HEAD BOLT	M20X60	2	
8	00 0212 191 0	CONTACT WASHER	A20	2	
8	00 0237 521 0	HEX.NUT	M20	2	
9	00 0236 230 0	HEXAGON HEAD BOLT	M16X35	6	
10	00 0239 391 0	CONTACT WASHER	A16	6	
11	00 0781 150 4	ENGINE MOUNTING		1	
12	00 0237 453 0	HEXAGON HEAD BOLT	M10X30	2	
13	00 0239 388 0	CONTACT WASHER	A10-10,2X22,25X1,6	2	
14	00 0234 326 0	WASHER	11X26X3	2	
15	00 0734 779 0	CABLE RING	C 20-35X50X2	1	
16	00 0236 200 0	HEXAGON HEAD BOLT	M8X20	2	
16	00 0239 387 0	CONTACT WASHER	A8-8,2X18X1,4	2	
16	00 0236 170 0	HEXAGONAL NUT	M8	2	
17	00 0781 297 3	SUPPORT	2X207X376,2	1	

1) Equipment

MD_P02_0732	OM926LA EWG240kW
MD_P02_0733	OM926LA K EWG240kW
MD_P02_0745	OM926LA ECE R120 240 kW@2200 rpm Tier 3 / Stage IIIA
MD_P02_0746	OM926LA DL compr. ECE R120 240 kW@2200 rpm Tier 3 / Stage IIIA

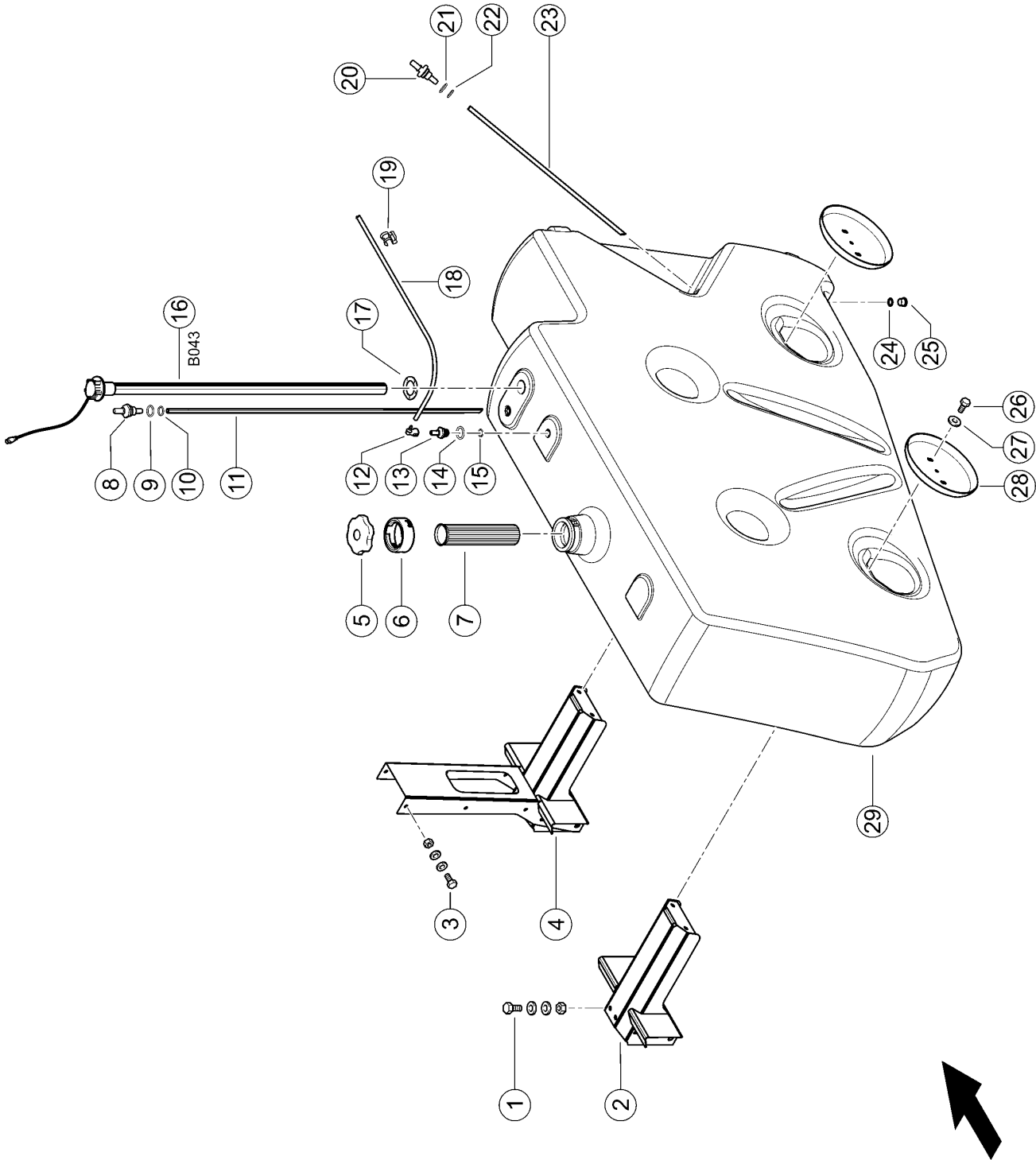


100 ENGINE SUSPENSION 1)

Pos.	Part No.	Description	Dimension	Quantity	Conditions
1	00 0781 340 1	SUPPORT	CAT TIER3 C9 RE	1	
2	00 0236 056 0	HEXAGON HEAD BOLT	M12X25	8	
3	00 0239 389 0	CONTACT WASHER	A12	8	
4	00 0237 453 0	HEXAGON HEAD BOLT	M10X30	3	
4	00 0239 388 0	CONTACT WASHER	A10-10,2X22,25X1,6	3	
4	00 0236 171 0	HEXAGONAL NUT	M10	1	
5	00 0773 993 1	SUPPORT		1	
6	00 0236 230 0	HEXAGON HEAD BOLT	M16X35	6	
7	00 0239 391 0	CONTACT WASHER	A16	6	
8	00 0781 470 7	ENGINE MOUNTING	PERKINS 1506D	1	
9	00 0781 297 3	SUPPORT	2X207X376,2	1	
10	00 0236 200 0	HEXAGON HEAD BOLT	M8X20	2	
10	00 0239 387 0	CONTACT WASHER	A8-8,2X18X1,4	2	
10	00 0236 170 0	HEXAGONAL NUT	M8	2	
11	00 0734 779 0	CABLE RING	C 20-35X50X2	1	

1) Equipment

MD_P02_0535	0535_C9 ECE R120 278kW T3
MD_P02_0536	C9 DL-compr. ECE R120 278 kW@1900 rpm Tier 3 / Stage IIIA
MD_P02_0655	CAT C9 engine (EWG258kW/ECE240kW) without air compressor
MD_P02_0656	Caterpillar C9 261 kW/355 hp with air compressor



100 FUEL TANK 1)

Pos.	Part No.	Description	Dimension	Quantity	Conditions
1	00 0237 461 0	HEXAGON HEAD BOLT	M12X30	12	
1	00 0239 389 0	CONTACT WASHER	A12	24	
1	00 0236 172 0	HEXAGONAL NUT	M12	12	
2	00 0548 203 0	MOUNT		1	2)
3	00 0237 382 0	HEXAGON HEAD BOLT	M10X20	6	
3	00 0239 388 0	CONTACT WASHER	A10-10,2X22,25X1,6	12	
3	00 0236 171 0	HEXAGONAL NUT	M10	6	
4	00 0548 204 0	MOUNT		1	3)
5	00 0034 018 0	CAP		1	
5	00 0581 279 0	CAP	ABSCHLIESSBAR	1	4)
6	00 0038 915 0	SOCKET	SV 80 B/40	1	
7	00 0736 238 0	TANK FILTER		1	
8	00 0783 649 2	ADAPTER		1	5)
9	00 0217 460 0	O-RING	18,64X3,53 -N	1	
10	00 0218 694 0	O-RING	18 X3 -N	1	
11	00 0550 429 1	RETURN PIPE		1	6)
12	00 0217 501 0	CONNECTOR	NQS 1/2" - 6 X 90 GRAD	1	
13	00 0794 417 2	VENTILATION		1	7)
14	00 0217 460 0	O-RING	18,64X3,53 -N	1	
15	00 0218 694 0	O-RING	18 X3 -N	1	
16	00 0016 595 0	LEVEL INDICATOR	D66X1210	1	8)
16	00 0783 653 0	PT SCREW	6ST 4X40	1	
17	00 0794 993 0	GASKET	VORRATSGEBER	1	
18	00 0459 454 0	PVC-HOSE	6 X 1,5	1	9)
19	00 0458 125 0	CLAMP	D8-D10	3	
19	00 2151 573 0	CABLE TIE	4,6 X 200 2TLG. KANTENBE	1	
20	00 0783 649 2	ADAPTER		1	10)
21	00 0217 460 0	O-RING	18,64X3,53 -N	1	
22	00 0218 694 0	O-RING	18 X3 -N	1	
23	00 0550 428 1	SUCTION PIPE		1	11)
24	00 0218 694 0	O-RING	18 X3 -N	1	
25	00 0550 068 0	SCREW PLUG		1	12)
26	00 0237 382 0	HEXAGON HEAD BOLT	M10X20	4	
27	00 0239 394 1	CONTACT WASHER	B10	4	
28	00 0548 224 1	WASHER		2	
29	00 2312 748 0	FUEL TANK		1	13)

1) Equipment

MD_P14_0065

Fuel tank 650 litres

2) Remarks

to the rear

3) Remarks

front

4) Remarks

As per requirement.

5) Remarks

with Item 9

6) Remarks

with Item 8 - 10

7) Remarks

with Item 14

8) CCN

CCN-B043

fuel level sensor
with Item 17**9) Remarks**

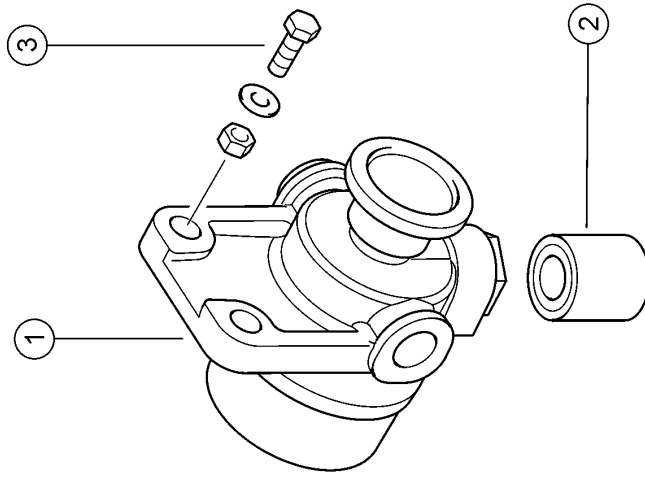
1900 mm long

10) Remarks

with Item 21

100 FUEL TANK 1)

11) Remarks	with Item 20 - 22
12) Remarks	with Item 24
13) Remarks	with Item 5-17,20-25



120 FUEL DELIVERY PUMP 1)

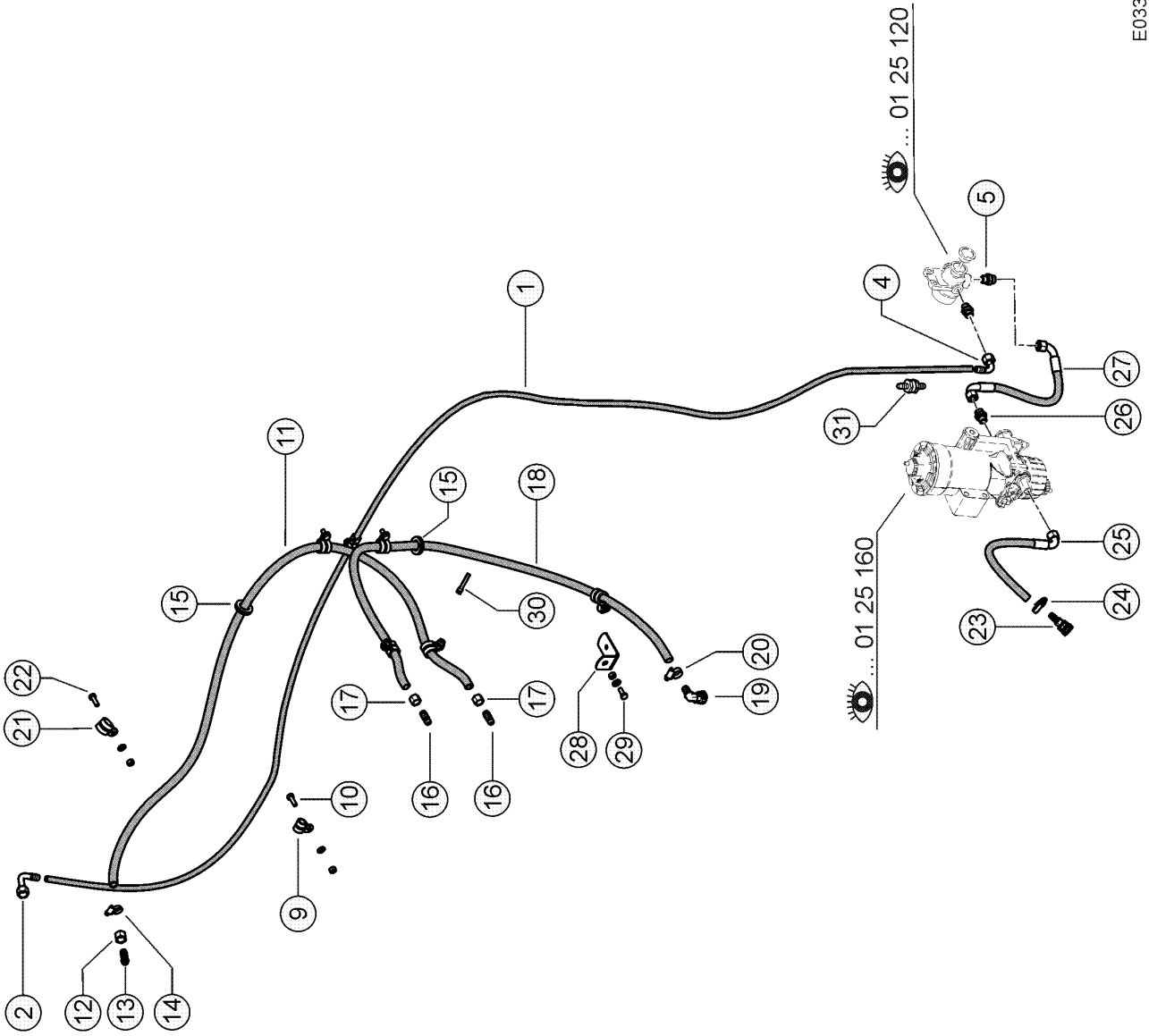
Pos.	Part No.	Description	Dimension	Quantity	Conditions
1	00 0068 665 0	HAND PUMP	H11K06 M16X1,5	1	2)
1	00 0077 447 0	INSPECTION GLASS		1	
1	00 0077 446 0	SEALING RING	F. H11 K02	1	
2	00 0077 445 0	FILTER ELEMENT		1	
3	00 0237 442 0	HEXAGON HEAD BOLT	M8X25	2	
3	00 0239 387 0	CONTACT WASHER	A8-8,2X18X1,4	2	
3	00 0236 170 0	HEXAGONAL NUT	M8	2	

1) Equipment

MD_P02_0732	OM926LA EWG240kW
MD_P02_0733	OM926LA K EWG240kW
MD_P02_0745	OM926LA ECE R120 240 kW@2200 rpm Tier 3 / Stage IIIA
MD_P02_0746	OM926LA DL compr. ECE R120 240 kW@2200 rpm Tier 3 / Stage IIIA
MD_P02_0786	Mercedes-Benz OM936 LA - 260 kW/354 hp (T4)
MD_P02_0787	Mercedes-Benz OM936 LA - 260 kW/354 hp (T4) with air compressor

2) Remarks

with Item 2



140 FUEL PIPES 1)

Pos.	Part No.	Description	Dimension	Quantity	Conditions
1	00 2598 000 1	FUEL PIPE	VORFILTER-MOTOR	1	2)
1	00 0773 603 2	FUEL PIPE	DC	1	3)
2	00 0068 687 1	CONNECTION	HANDPUMPE-MOTOR M18X1,5-10/100GRAD 1 KRAFT	1	
4	00 0142 279 0	TUBE NIPPLE	DN10 - N90 L12	1	
5	00 0216 097 0	STRAIGHT MALE CONNECTOR	(M18X1,5) SDS-L12XM16X1, 5-TYPE E	2	
9	00 0216 341 0	HOLDER CLAMP	D1-12X20	6	
10	00 0236 200 0	HEXAGON HEAD BOLT	M8X20	6	
10	00 0239 387 0	CONTACT WASHER	A8-8,2X18X1,4	6	
10	00 0236 170 0	HEXAGONAL NUT	M8	6	
11	00 0773 889 3	FUEL PIPE	MOTOR - KUEHLER	1	4)
12	00 0216 364 0	UNION NUT	BLL12	1	
13	00 0068 688 1	CONNECTION	M18X1,5-10	1	
14	00 0408 552 2	HOSE CLAMP	A-12-22X9	1	
15	00 0215 409 0	GROMMET	C 10-18X30X1,5	2	
16	00 0215 167 0	CONNECTION	D16X1,5-10	2	
17	00 0216 006 0	UNION NUT	BLL10	2	
18	00 0773 257 3	FUEL PIPE	KUEHLER-TANK	1	5)
19	00 0530 176 0	CONNECTION	NQ-S-NW 1/2-08-90GRAD	1	
20	00 0408 552 2	HOSE CLAMP	A-12-22X9	1	
21	00 0216 156 0	PIPE CLAMP	D1-19X20	6	
22	00 0236 200 0	HEXAGON HEAD BOLT	M8X20	6	
22	00 0239 387 0	CONTACT WASHER	A8-8,2X18X1,4	6	
22	00 0236 170 0	HEXAGONAL NUT	M8	6	
23	00 0798 609 0	CONNECTOR	NORMAQUICK S NW 1/2"-10-	1	
24	00 0408 552 2	HOSE CLAMP	A-12-22X9	1	
25	00 0773 601 2	FUEL PIPE	TANK-FILTER	1	6)
26	00 0215 799 0	SCREW-IN FITTING	SDS-L12XG3/8A-TYPE 1 E	1	
27	00 0773 602 1	FUEL PIPE	FILTER-HANDPUMPE	1	
28	00 0077 377 0	SUPPORT	3X30X98	1	
29	00 0236 200 0	HEXAGON HEAD BOLT	M8X20	1	
29	00 0239 387 0	CONTACT WASHER	A8-8,2X18X1,4	1	
29	00 0236 170 0	HEXAGONAL NUT	M8	1	
30	00 0237 871 0	CABLE TIE	4,8X188X1,3	2	
31	00 0773 855 0	NON-RETURN VALVE	NW 10	1	7)

1) Equipment

MD_P02_0732	OM926LA EWG240kW
MD_P02_0733	OM926LA K EWG240kW
MD_P02_0745	OM926LA ECE R120 240 kW@2200 rpm Tier 3 / Stage IIIA
MD_P02_0746	OM926LA DL compr. ECE R120 240 kW@2200 rpm Tier 3 / Stage IIIA
MD_P02_0786	Mercedes-Benz OM936 LA - 260 kW/354 hp (T4)
MD_P02_0787	Mercedes-Benz OM936 LA - 260 kW/354 hp (T4) with air compressor

2) machine no.

+ from C0700319 up to C0709999
+ from C3800043 up to C3809999
with Item 2 - 4, 31

3) machine no.

+ from C0700011 up to C0700318
+ from C3800011 up to C3800042
with Item 2 - 4

4) Remarks

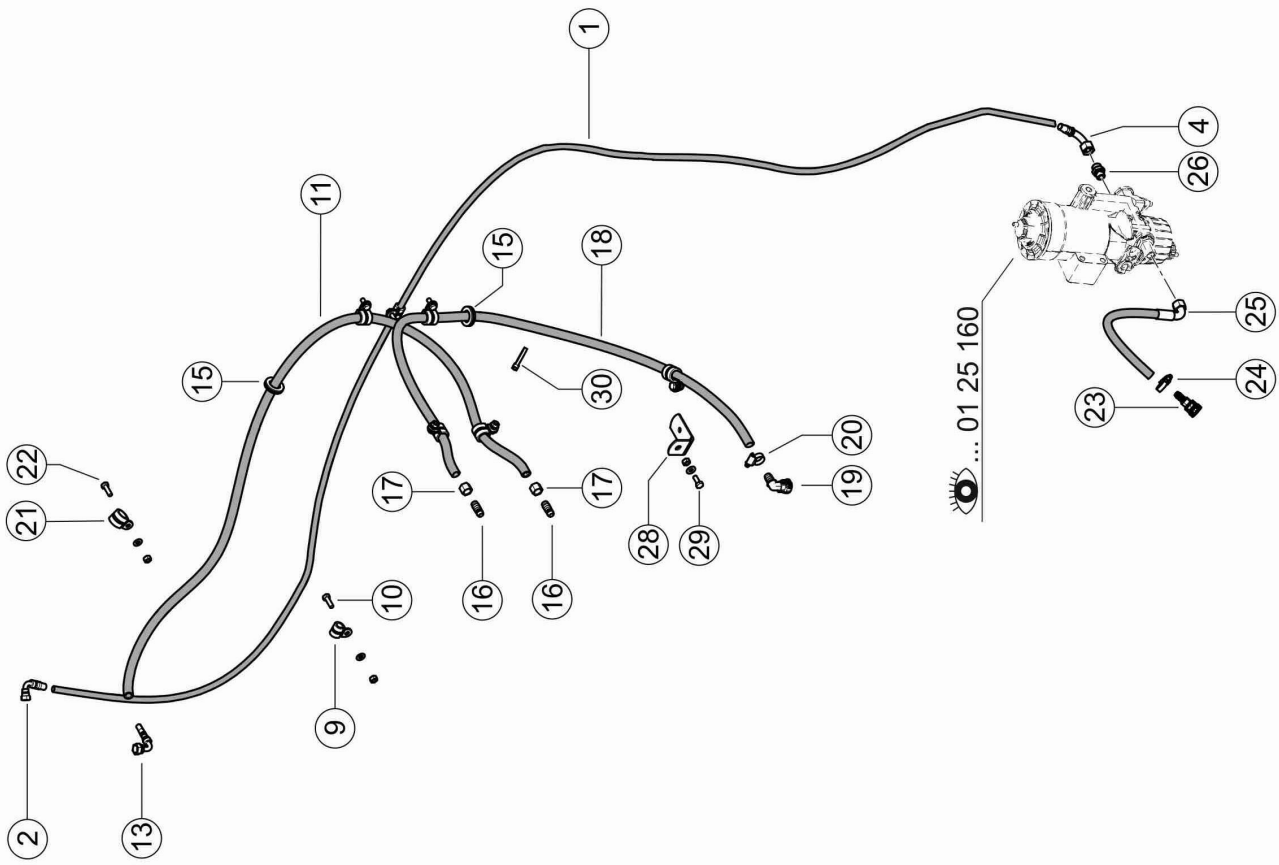
with Item 12-17

5) Remarks

with Item 15-17,19,20

140 FUEL PIPES 1)

6) Remarks	with Item 23, 24
7) machine no.	+ from C0700319 up to C0709999 + from C3800043 up to C3809999



Thank you so much for reading.
Please click the “Buy Now!”
button below to download the
complete manual.



After you pay.

You can download the most
perfect and complete manual in
the world immediately.

Our support email:

ebooklibonline@outlook.com