



# Service Repair Manual

## **Models**

# 336D LN EXCAVATOR

---

Product: EXCAVATOR

Model: 336D LN EXCAVATOR L5K

Configuration: 336D LN Mobile Hydraulic Power Unit L5K00001-UP (MACHINE) POWERED BY C9 Engine

## **Disassembly and Assembly**

### **330D, 336D, 336D2, 340D and 340D2 Excavators and 336D MHPU Mobile Hydraulic Power Unit C9 Engine Supplement**

Media Number -REN8647-16

Publication Date -01/10/2015

Date Updated -26/10/2015

i02417234

## **Engine Oil Filter Base - Disassemble**

SMCS - 1306-015; 1306

### **Disassembly Procedure**

#### **Start By:**

- a. Remove the engine oil filter base. Refer to Disassembly and Assembly, "Engine Oil Filter Base - Remove".

**Note:** Cleanliness is an important factor. Before the disassembly procedure, the exterior of the component should be thoroughly cleaned. This will help to prevent dirt from entering the internal mechanism.

---

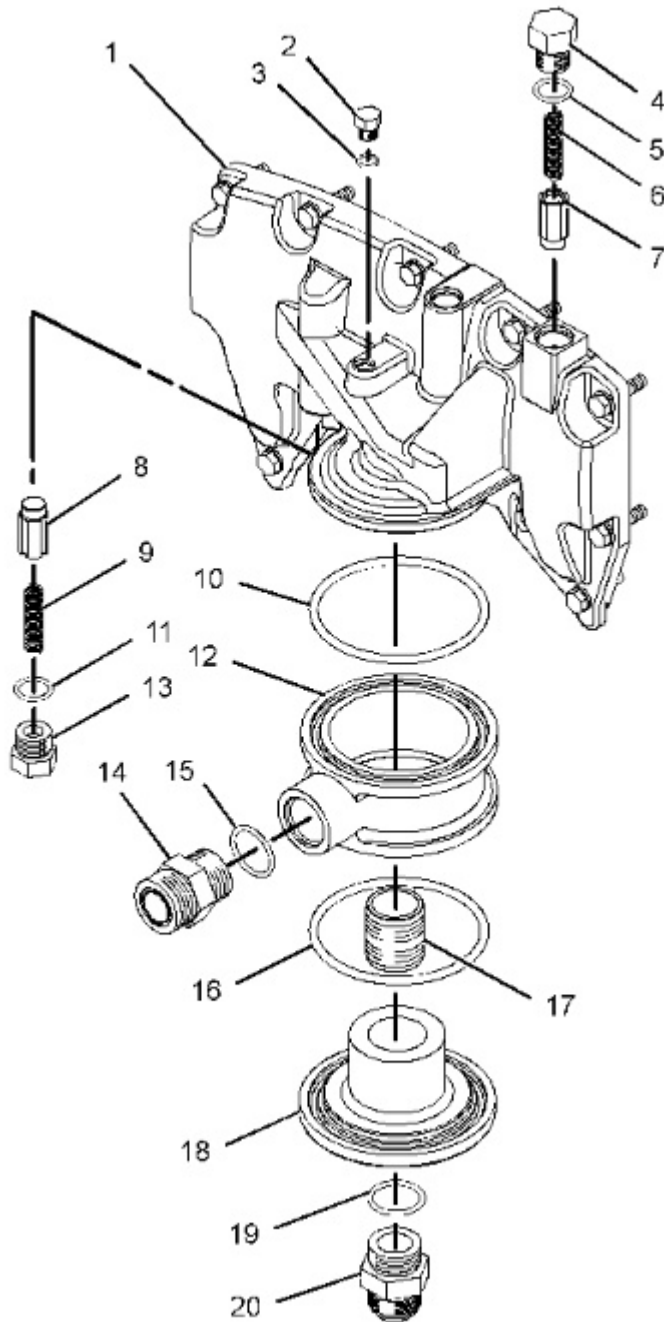


Illustration 1

g01208235

 **WARNING**

**Personal injury can result from being struck by parts propelled by a released spring force.**

**Make sure to wear all necessary protective equipment.**

**Follow the recommended procedure and use all recommended tooling to release the spring force.**

1. Remove connector (20) and O-ring seal (19).
2. Remove cover (18) and O-ring seal (16).
3. Remove stud (17).
4. Remove connector (14) and O-ring seal (15).
5. Remove adapter (12) and O-ring seal (10).
6. Remove plug (2) and O-ring seal (3).
7. Remove plug (13), O-ring seal (11), spring (9), and valve (8) from engine oil filter base (1).
8. Remove plug (4), O-ring seal (5), spring (6), and valve (7) from engine oil filter base (1).

Product: EXCAVATOR

Model: 336D LN EXCAVATOR L5K

Configuration: 336D LN Mobile Hydraulic Power Unit L5K00001-UP (MACHINE) POWERED BY C9 Engine

## **Disassembly and Assembly**

### **330D, 336D, 336D2, 340D and 340D2 Excavators and 336D MHPU Mobile Hydraulic Power Unit C9 Engine Supplement**

Media Number -REN8647-16

Publication Date -01/10/2015

Date Updated -26/10/2015

i02417236

## **Engine Oil Filter Base - Assemble**

SMCS - 1306-016; 1306

### **Assembly Procedure**

**Note:** Cleanliness is an important factor. Before assembly, all parts should be thoroughly cleaned in cleaning fluid. Allow the parts to air dry. Wiping cloths or rags should not be used to dry parts. Lint may be deposited on the parts which may cause later trouble. Inspect all parts. If any parts are worn or damaged, use new parts for replacement.

---

Thank you so much for reading.  
Please click the “Buy Now!”  
button below to download the  
complete manual.



After you pay.

You can download the most  
perfect and complete manual in  
the world immediately.

Our support email:

[ebooklibonline@outlook.com](mailto:ebooklibonline@outlook.com)