



Service Repair Manual

Models

336D and 336D L Excavator

Product: EXCAVATOR

Model: 336D EXCAVATOR KKT

Configuration: 336D & 336D L Excavators KKT00001-UP (MACHINE) POWERED BY C9 Engine

Disassembly and Assembly

330D, 336D, 336D2, 340D and 340D2 Excavators and 336D MHPU Mobile Hydraulic Power Unit C9 Engine Supplement

Media Number -REN8647-16

Publication Date -01/10/2015

Date Updated -26/10/2015

i02417236

Engine Oil Filter Base - Assemble

SMCS - 1306-016; 1306

Assembly Procedure

Note: Cleanliness is an important factor. Before assembly, all parts should be thoroughly cleaned in cleaning fluid. Allow the parts to air dry. Wiping cloths or rags should not be used to dry parts. Lint may be deposited on the parts which may cause later trouble. Inspect all parts. If any parts are worn or damaged, use new parts for replacement.

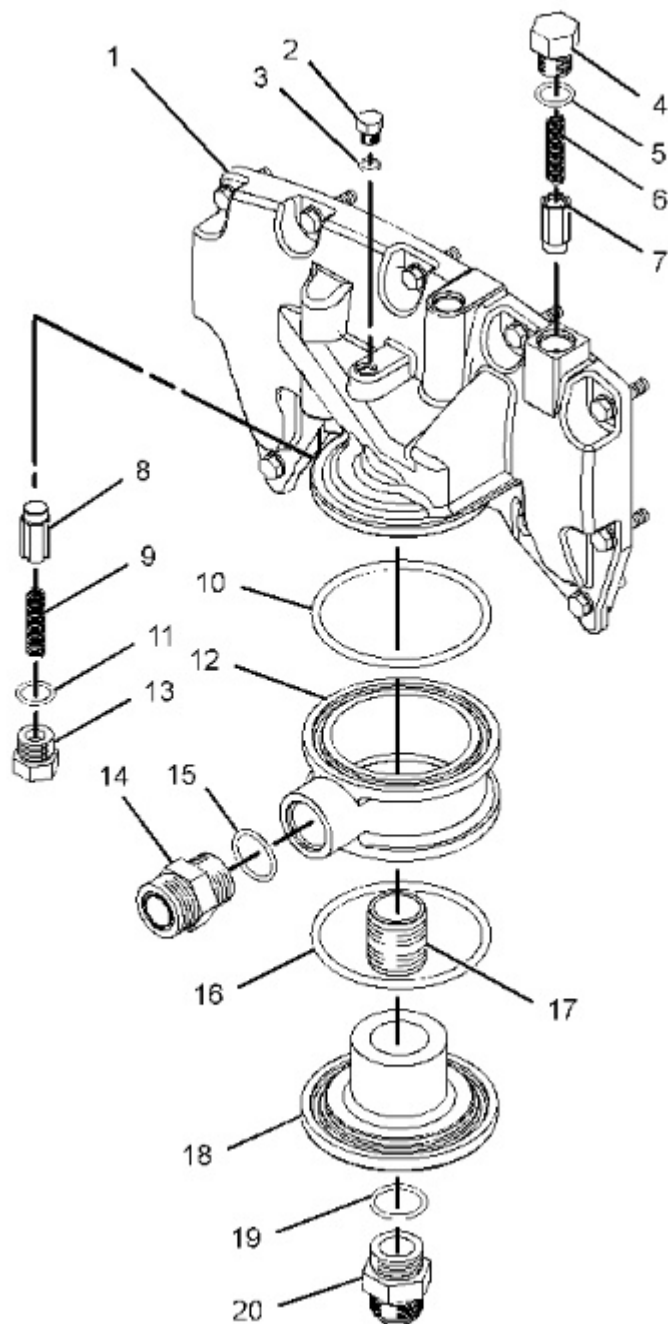


Illustration 1

g01208235



WARNING

Improper assembly of parts that are spring loaded can cause bodily injury.

To prevent possible injury, follow the established assembly procedure and wear protective equipment.

1. Install valve (7), spring (6), O-ring seal (5), and plug (4) into engine oil filter base (1).
2. Install valve (8), spring (9), O-ring seal (11), and plug (13) into engine oil filter base (1).
3. Install O-ring seal (3) and plug (2).
4. Install O-ring seal (10) and adapter (12).
5. Install O-ring seal (15) and connector (14).
6. Install stud (17).
7. Install O-ring seal (16) and cover (18).
8. Install O-ring seal (19) and connector (20).

End By:

- a. Install the engine oil filter base. Refer to Disassembly and Assembly, "Engine Oil Filter Base - Install".

Product: EXCAVATOR

Model: 336D EXCAVATOR KKT

Configuration: 336D & 336D L Excavators KKT00001-UP (MACHINE) POWERED BY C9 Engine

Disassembly and Assembly

330D, 336D, 336D2, 340D and 340D2 Excavators and 336D MHPU Mobile Hydraulic Power Unit C9 Engine Supplement

Media Number -REN8647-16

Publication Date -01/10/2015

Date Updated -26/10/2015

i02417231

Engine Oil Filter Base - Install

SMCS - 1306-012

Installation Procedure

Table 1

Required Tools			
Tool	Part Number	Part Description	Qty
A	-	Guide Stud M8 - 1.25 by 65 mm	2

Note: Cleanliness is an important factor. Before assembly, all parts should be thoroughly cleaned in cleaning fluid. Allow the parts to air dry. Wiping cloths or rags should not be used to dry parts. Lint may be deposited on the parts which may cause later trouble. Inspect all parts. If any parts are worn or damaged, use new parts for replacement.

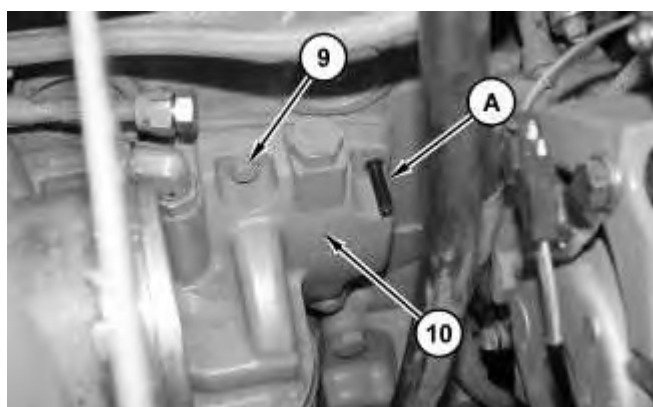


Illustration 1

g01208181

1. Install the gasket and engine oil filter base (10) over Tooling (A).
2. Install bolts (9).

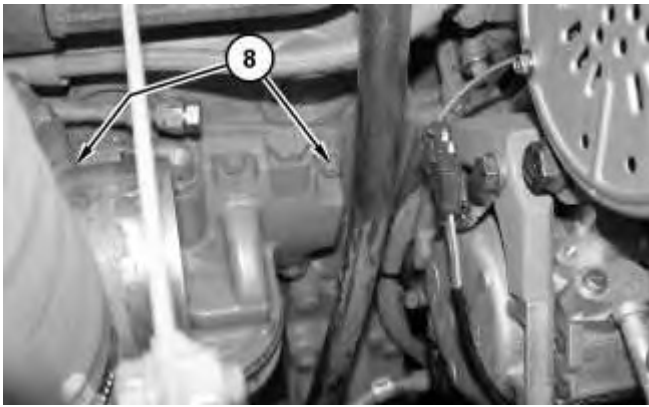


Illustration 2

g01208179

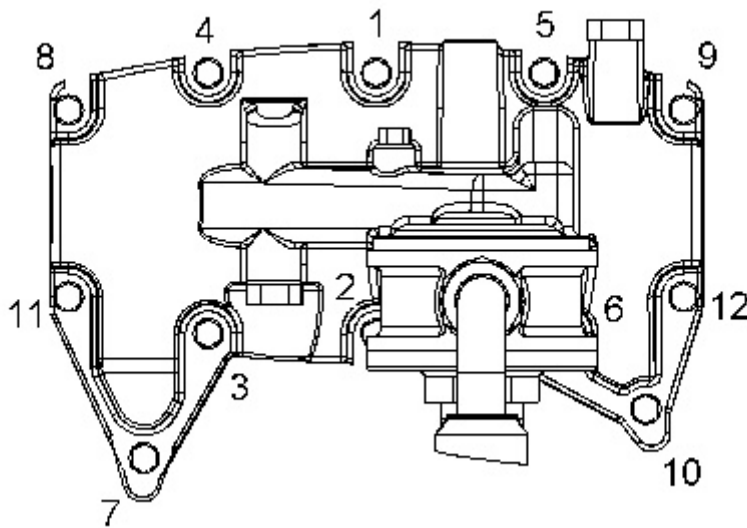


Illustration 3

g01208224

3. Remove Tooling (A) and install bolts (8). Refer to Illustration 3 for the correct tightening sequence.
-

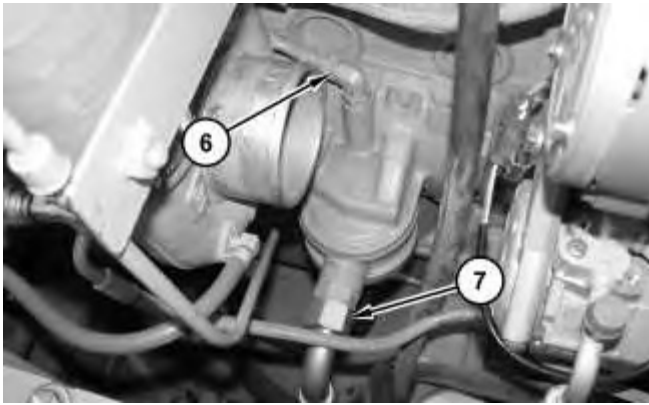


Illustration 4

g01208178

4. Connect hose assemblies (6) and (7).

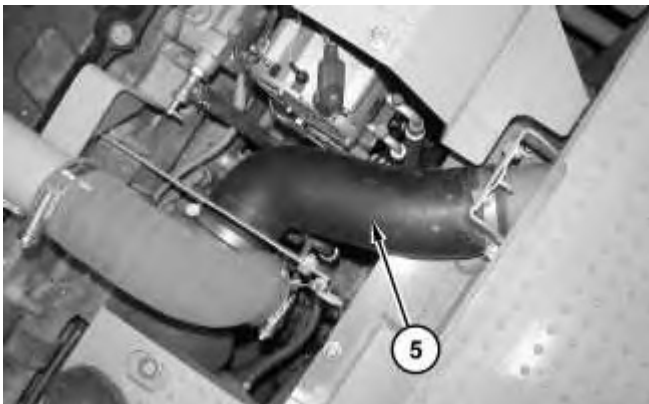


Illustration 5

g01208176

5. Install hose (5).

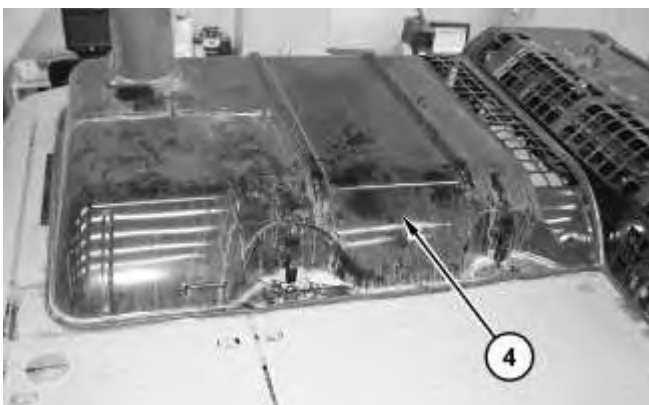


Illustration 6

g01208119

6. Close engine hood (4).

Thank you so much for reading.
Please click the “Buy Now!”
button below to download the
complete manual.



After you pay.

You can download the most
perfect and complete manual in
the world immediately.

Our support email:

ebooklibonline@outlook.com