



Service Repair Manual

Models

938H Wheel Loader

Product: WHEEL LOADER

Model: 938H WHEEL LOADER MJC

Configuration: 938H Wheel Loader MJC00001-UP (MACHINE) POWERED BY C6.6 Engine

Disassembly and Assembly C6.6 Engines for Caterpillar Built Machines

Media Number -KENR6081-15

Publication Date -01/03/2014

Date Updated -04/03/2014

i05735215

Electronic Unit Injector - Install

SMCS - 1290-012

Installation Procedure

Table 1

Required Tools			
Tool	Part Number	Part Description	Qty
B	298-5564	T40 Torx Socket	1
D	1U-5718	Vacuum Pump	1
	169-7372	Fluid Sampling Bottle	1
	4C-4057	Tube 7.9 mm (0.31 inch) Outside Diameter	1
E	276-1216	Injector Pipe Nut Tool	1
F	247-5377	Torque Wrench	1

NOTICE

Ensure that all adjustments and repairs that are carried out to the fuel system are performed by authorised personnel that have the correct training.

Before beginning ANY work on the fuel system, refer to Operation and Maintenance Manual, "General Hazard Information and High Pressure Fuel Lines" for safety information.

Refer to Systems Operation, Testing and Adjusting Manual, "Cleanliness of Fuel System Components" for detailed information on

the standards of cleanliness that must be observed during ALL work on the fuel system.

NOTICE

Care must be taken to ensure that fluids are contained during performance of inspection, maintenance, testing, adjusting and repair of the product. Be prepared to collect the fluid with suitable containers before opening any compartment or disassembling any component containing fluids.

Dispose of all fluids according to local regulations and mandates.

NOTICE

Use a deep socket in order to remove the electrical connections from the electronic unit injectors. Use of incorrect tooling will result in damage to the electronic unit injectors.

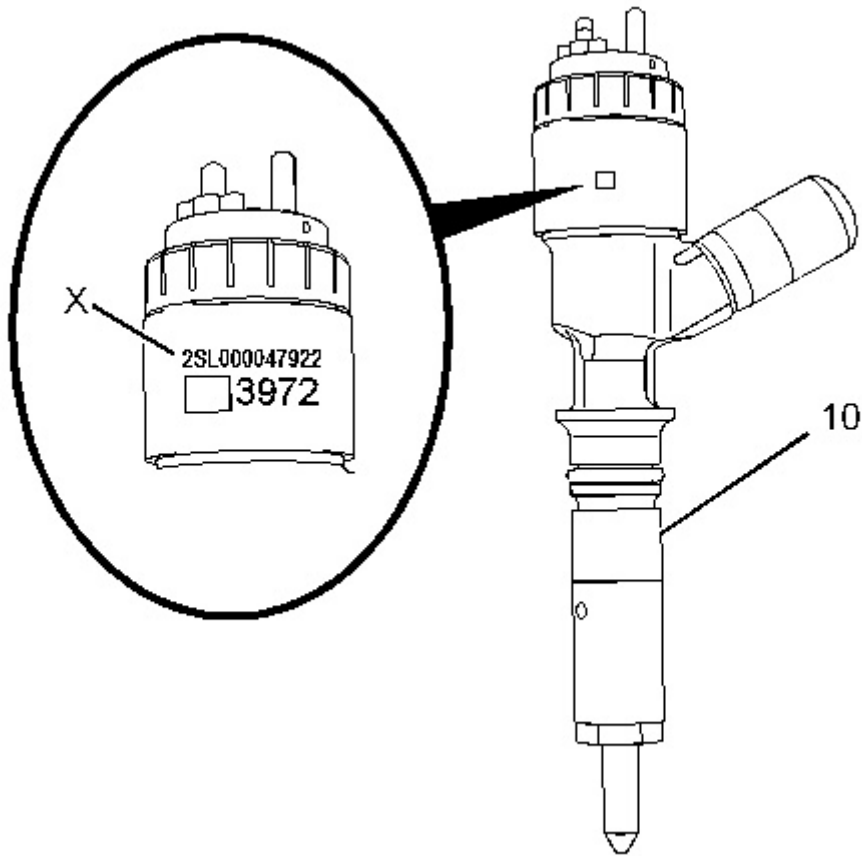


Illustration 1
Typical Injector Code

g01341874

1. If a replacement electronic unit injector is installed, the correct injector code must be programmed into the electronic control module. Refer to Troubleshooting, "Injector Code - Calibrate" for more information. The code that is required to obtain the injector code is located at Position (X).

Note: Record the Injector Code (X) before the electronic unit injector is installed.

2. Use Tooling (D) in order to remove any fuel from the cylinder.

Note: Evacuate as much fuel as possible from the cylinder before installing the electronic unit injector.

3. Ensure that the fuel inlet port of the electronic unit injector is capped. Ensure that the electronic unit injector is clean.
-

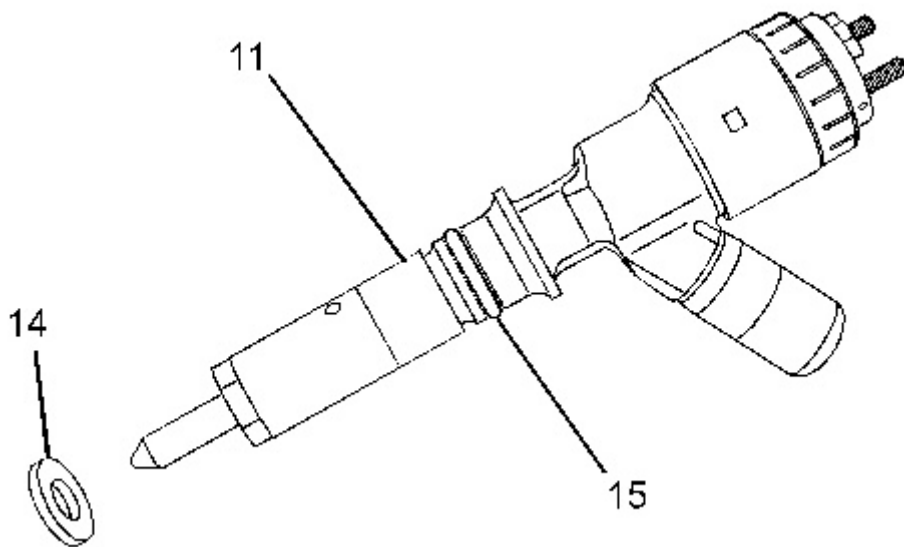


Illustration 2

g01255701

4. On installing an original electronic unit injector, install a new O-ring seal (15) and sealing washer (14) to electronic unit injector (11).

Ensure that the O-ring seal (15) and sealing washer (14) on a new electronic unit injector are not damaged and in place.

Note: Do not lubricate the O-ring seal.

5. Ensure that the seat for the electronic unit injector in the cylinder head is clean and free from damage. Ensure that the sealing washer has been removed from the cylinder head.
-

Thank you so much for reading.
Please click the “Buy Now!”
button below to download the
complete manual.



After you pay.

You can download the most
perfect and complete manual in
the world immediately.

Our support email:

ebooklibonline@outlook.com