



Service Repair Manual

Models

966C WHEEL LOADER

Product: WHEEL LOADER
Model: 966C WHEEL LOADER 76J
Configuration: 966C WHEEL LOADER 76J00001-06388 (MACHINE)

Disassembly and Assembly 966 WHEEL LOADER POWER TRAIN

Media Number -REG01117-02

Publication Date -01/04/1992

Date Updated -10/10/2001

Final Drive Planet Carriers

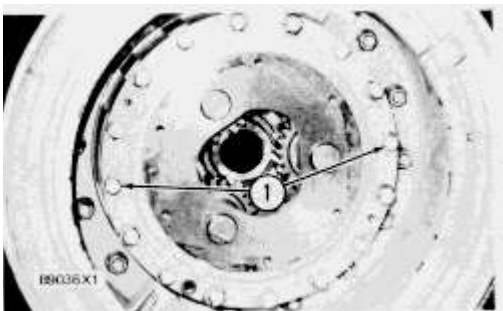
SMCS - 4092-11; 4092-12

Remove Final Drive Planet Carriers

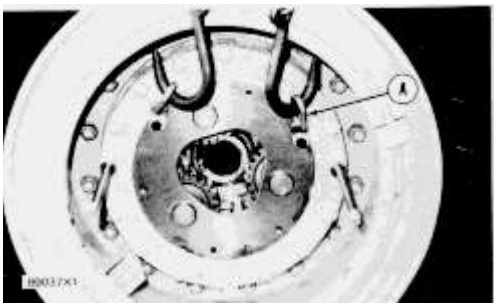
| Tools Needed | | A |
|--------------|--------------|---|
| 5P9736 | Bracket-Link | 2 |

start by:

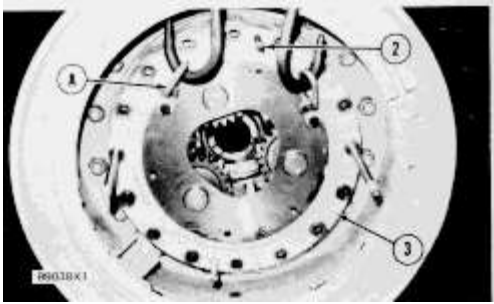
a) remove axles



1. Remove two bolts (1) (180° apart). Install two 5/8"-11 NC guide bolts in their place.



2. Fasten tooling (A) and a hoist to the final drive planet carrier as shown. Remove the remainder of the bolts that hold the final drive planet carrier to the wheel assembly.

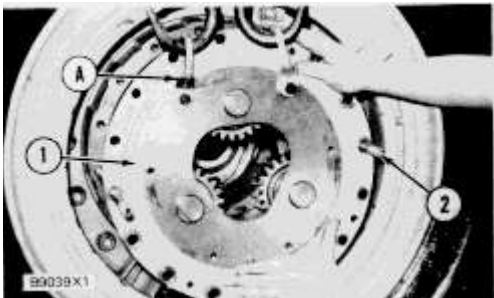


3. Install two 1/2"-13 NC forcing screws (2) and loosen the final drive planet carrier from the wheel assembly.
4. Remove final drive planet carrier (3). The weight of the carrier is 100 lb. (45 kg).

Install Final Drive Planet Carrier

| Tools Needed | | A |
|--------------|--------------|---|
| 5P9736 | Bracket-Link | 2 |

1. Check the O-ring on the back of the planet carrier for damage or wear. If necessary, make a replacement.
2. Install two 5/8"-11 NC guide bolts (2) in the wheel assembly 180° apart as shown.



3. Fasten tooling (A) and a hoist to the planet carrier. Put final drive planet carrier (1) in position in the wheel assembly. Install the bolts that hold it. Remove guide bolts (2). Install the remainder of the bolts. Tighten the bolts to a torque of 150 ± 20 lb.ft. (205 ± 27 N·m).

end by:

a) install axles

Product: WHEEL LOADER
Model: 966C WHEEL LOADER 76J
Configuration: 966C WHEEL LOADER 76J00001-06388 (MACHINE)

Disassembly and Assembly 966 WHEEL LOADER POWER TRAIN

Media Number -REG01117-02

Publication Date -01/04/1992

Date Updated -10/10/2001

Final Drive Planet Carriers

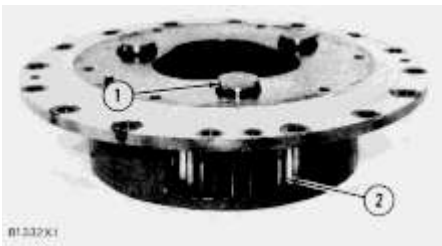
SMCS - 4092-16; 4092-15

Disassemble Final Drive Planet Carriers

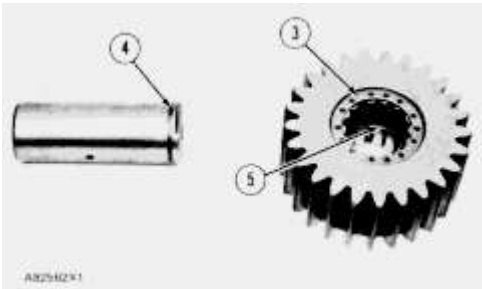
start by:

a) remove final drive planet carriers

1. Remove shafts (1) from the carrier.



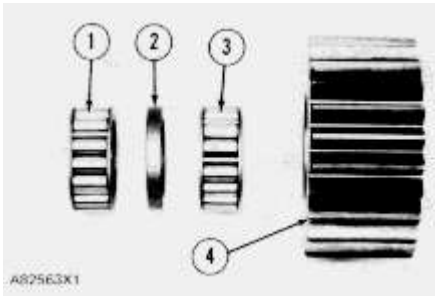
2. Remove three gears (2) and twelve washers.



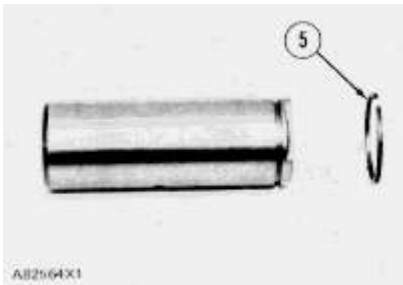
3. Remove retainer ring (4) from the shafts.

4. Remove two bearings (3) and spacer (5) from the gears.

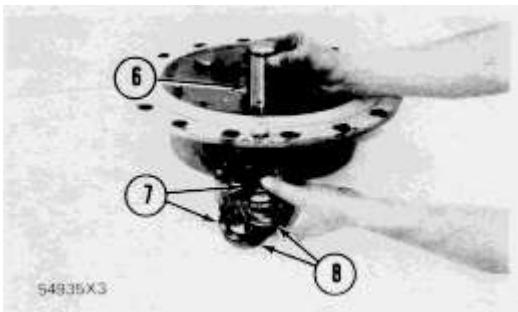
Assemble Final Drive Planet Carriers



1. Install bearings (1) and (3) and spacers (2) in gears (4).



2. Install retainer rings (5) on the shaft.



3. Put gears and washers in position in the carrier with steel washers (7) next to the gears and bronze washers (8) between the carrier and steel washers.

4. Install shafts (6) in the carrier.

end by:

a) install final drive planet carriers

Thank you so much for reading.
Please click the “Buy Now!”
button below to download the
complete manual.



After you pay.

You can download the most
perfect and complete manual in
the world immediately.

Our support email:

ebooklibonline@outlook.com