



Service Repair Manual

Models

D10R TRACK-TYPE TRACTOR

Product: TRACK-TYPE TRACTOR

Model: D10R TRACK-TYPE TRACTOR 3KR

Configuration: D10R Track-Type Tractor 3KR00001-UP (MACHINE) POWERED BY 3412 Engine

Disassembly and Assembly D10R TRACK-TYPE TRACTOR POWER TRAIN

Media Number -SEN8422-03

Publication Date -01/11/2004

Date Updated -06/12/2017

SEN84220019

Final Drives

SMCS - 4050-015; 4050-016; 4050-011; 4050-012

Remove Final Drives

Fluid Spillage Containment

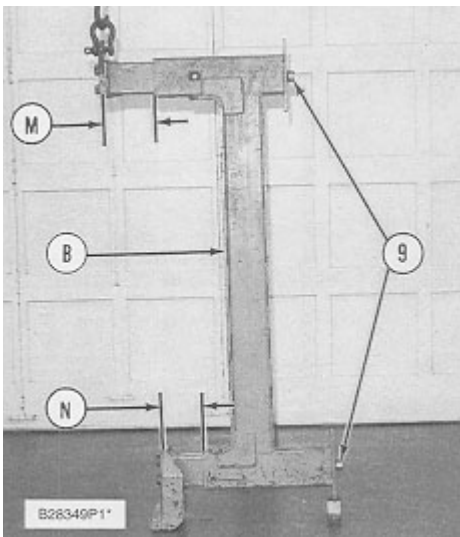
Care must be taken to ensure that fluids are contained during performance of inspection, maintenance, testing, adjusting and repair of the machine. Be prepared to collect the fluid with suitable containers before opening any compartment or disassembling any component containing fluids. Refer to "TOOLS AND SHOP PRODUCTS GUIDE, NENG2500", for tools and supplies suitable to collect and contain fluids in Caterpillar machines. Dispose fluids according to local regulations and mandates.

Tools Needed		A
5P-8622	Shackle	1
5P-7284	Plate	1
5P-7279	Adjustable Hook	1
5P-7281	Bracket	1

Start By:

- a. separation of tracks
- b. remove axles

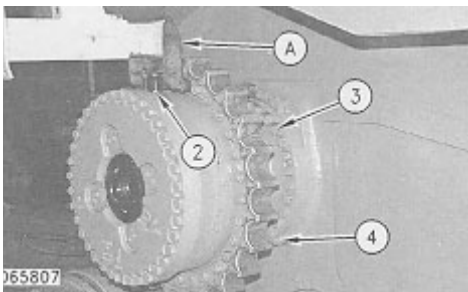
NOTE: The final drive planetary carriers can be removed in chassis. See Remove Final Drive Planetary Carriers (In Chassis).



WARNING

Make sure that the short support of Tooling (A) is on the bottom, and the long support is on the top when distances (M) and (N) are made.

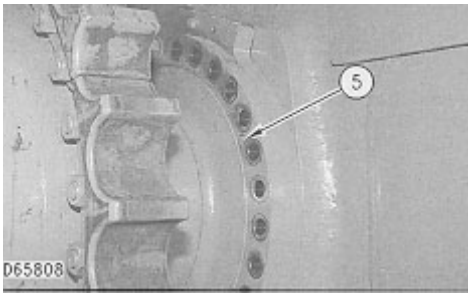
1. Make an adjustment to bolts (1) on Tooling (A) so distance (M) is **75 mm (2.95 in)** and distance (N) is **180 mm (7.08 in)**.



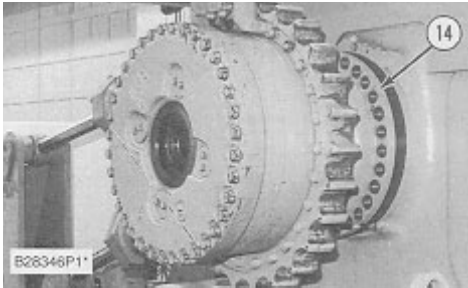
2. Remove three bolts from the sprocket segments. Fasten a hoist, and install Tooling (A). Make an adjustment to bolts (2) until the bolts are against the final drive hub.
3. Remove bolts (3) that hold the final drive and steering clutch and brake to the frame.

NOTICE

Do not remove three bolts (4) that hold the steering clutch and brake to the frame.

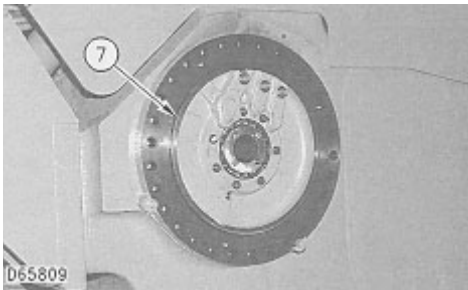


4. Remove three bolts (5) that hold the final drive and steering clutch and brake together.



Typical Example

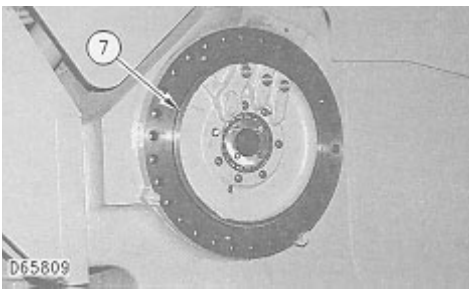
5. Remove final drive (6) from the machine. The weight of the final drive is approximately **1070 kg (2360 lb)**.



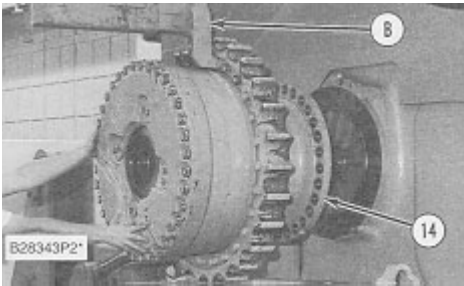
6. Remove O-ring seal (7) from the steering clutches.

Install Final Drives

Tools Needed		A
5P-7281	Bracket	1
5P-7279	Adjustable Hook	1
5P-7284	Plate	1
5P-8622	Shackle	1

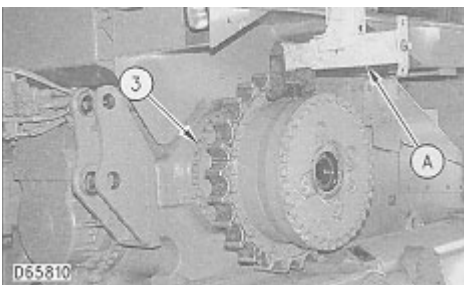


1. Inspect all O-ring seals for wear or damage, and make replacements if necessary.
2. Put O-ring seal (7) in position on the steering clutches.



Typical Example

3. Fasten a hoist, and install Tooling (A) on the final drive. Make an adjustment to Tooling (A), if needed, to put the final drive in a level position.
4. Put the final drive (6) in position on the tractor.



5. Install bolts (3) that hold the final drive in place. Tighten the bolts to a torque of **1125 ± 100 N·m (820 ± 75 lb ft)**.
6. Install three bolts (5) that hold the final drive to the steering clutch and brake.
7. Remove tool (A) from the final drive. Put clean **SAE 30W Oil** on the threads of the sprocket segment bolts. Install the bolts and nuts (with the head of the bolts against the final drive). Tighten the nuts to a torque of **870 ± 70 N·m (642 ± 50 lb ft)**. Tighten the nuts **120 degrees** more. Final torque must be a minimum of **1500 N·m (1110 lb ft)**.

End By:

- a. install axles
- b. connect track

Thank you so much for reading.
Please click the “Buy Now!”
button below to download the
complete manual.



After you pay.

You can download the most
perfect and complete manual in
the world immediately.

Our support email:

ebooklibonline@outlook.com