



# Service Repair Manual

## **Models**

# D6R II TRACK-TYPE TRACTOR

---

Product: TRACK-TYPE TRACTOR

Model: D6R II TRACK-TYPE TRACTOR BPS

Configuration: D6R SERIES II TRACK-TYPE TRACTOR FTC XL BPS00501-UP (MACHINE) POWERED BY C-9 ENGINE

## Disassembly and Assembly

### D6R Series II Track-Type Tractor Power Train

Media Number -REN4257-03

Publication Date -01/08/2009

Date Updated -01/09/2009

i01645342

## Torque Converter - Disassemble

SMCS - 3101-015

## Disassembly Procedure

Table 1

Required Tools			
Tool	Part Number	Description	Qty
A	1P-1863	Retaining Ring Pliers	1
B	138-7575	Link Bracket	2
C		Forcing Screws (3/8 inch by 16)	2
D	136-1452	Retaining Ring Pliers	1
E	138-7573	Link Bracket	2
F	1P-0510	Driver Gp	1
G		Forcing Screws (3/8 inch by 16)	2
H	1P-0520	Driver Gp	1
J	2P-8312	Retaining Ring Pliers	1

### Start By:

- Remove the torque converter. Refer to Disassembly and Assembly, "Torque Converter-Remove".

**Note:** Cleanliness is an important factor. Before the disassembly procedure, the exterior of the component should be thoroughly cleaned. This will help to prevent dirt from entering the internal mechanism.

---

## NOTICE

Care must be taken to ensure that fluids are contained during performance of inspection, maintenance, testing, adjusting and repair of the product. Be prepared to collect the fluid with suitable containers before opening any compartment or disassembling any component containing fluids.

Refer to Special Publication, NENG2500, "Caterpillar Tools and Shop Products Guide" for tools and supplies suitable to collect and contain fluids on Caterpillar products.

Dispose of all fluids according to local regulations and mandates.

---

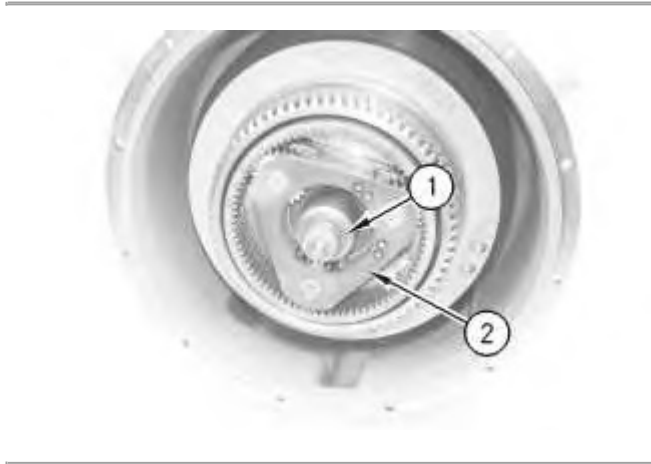


Illustration 1

g00533425

1. Use Tooling (A) in order to remove retaining ring (1) from the shaft.
  2. Remove planetary carrier (2) .
-



Illustration 2

g00533428

3. Remove retainer (4) and retaining ring (3) from planetary carrier (2) .

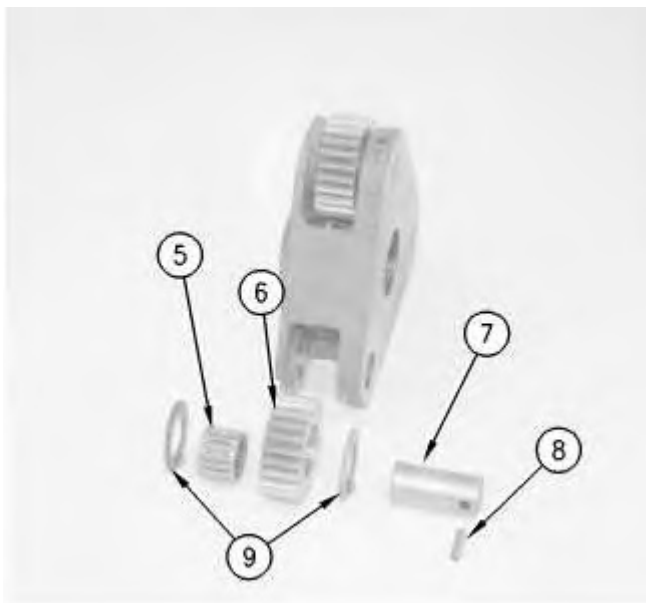


Illustration 3

g00533430

4. Use a hammer and a punch in order to push pin (8) into shaft (7) .
5. Remove the following components from the planetary carrier: shaft (7), washers (9) and planetary gear (6) .
6. Remove bearing (5) from the planetary gear.
7. Remove pin (8) from shaft (7) .

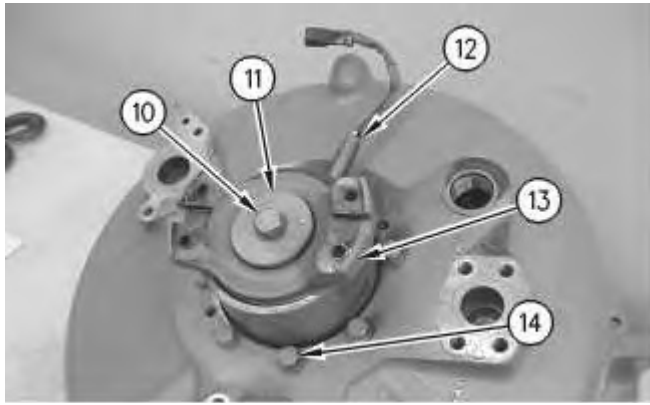


Illustration 4

g00850466

8. Place wood blocks under the torque converter.
9. Remove the following components from the end of the torque divider: bolt (10), retainer (11) and yoke (13) .
10. Remove sensor (12). Remove bolts (14) .

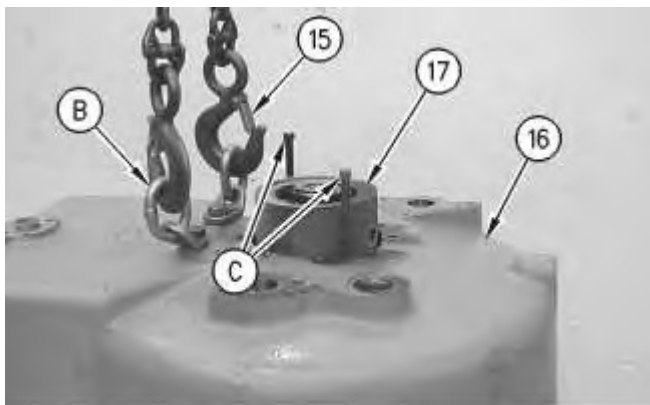


Illustration 5

g00852210

11. Install Tooling (B) and attach a hoist and chain (15) to cover (16). Install Tooling (C) in the cover. Tighten Tooling (C) evenly, and remove cover (16). The cover of the torque converter weighs approximately 70 kg (150 lb).
-

Thank you so much for reading.  
Please click the “Buy Now!”  
button below to download the  
complete manual.



After you pay.

You can download the most  
perfect and complete manual in  
the world immediately.

Our support email:

[ebooklibonline@outlook.com](mailto:ebooklibonline@outlook.com)