



# Service Repair Manual

## **Models**

# D6R III TRACK-TYPE TRACTOR

---

Product: TRACK-TYPE TRACTOR

Model: D6R III TRACK-TYPE TRACTOR HDC

Configuration: D6R Series III TRACK-TYPE TRACTOR XL PAT, XW PAT, LGP PAT Differential Steering HDC00001-UP (MACHINE) POWERED BY C9 Engine

## Disassembly and Assembly D6R Series III Track-Type Tractor Power Train

Media Number -REN8173-06

Publication Date -01/04/2018

Date Updated -26/04/2018

i03576221

## Final Drive - Install

SMCS - 4050-012

## Installation Procedure

Table 1

Required Tools			
Tool	Part Number	Part Description	Qty
A	FT-1952	Installer	1
B	8T-3207	Lifting Bracket	1
	5P-8622	Shackle	1
	1D-4593	5/8 - 11 by 5 1/2 bolt	2
	4K-0367	5/8 - 11 by nut	2
	5P-8248	Washer	4

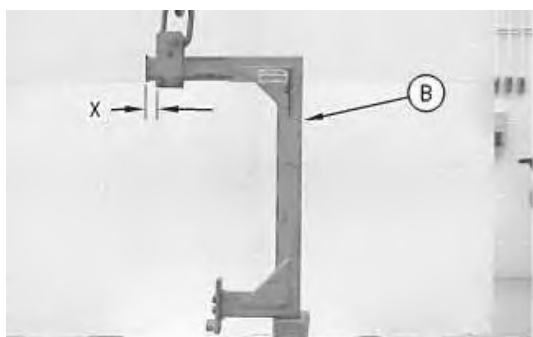


Illustration 1

g00826743

1. Adjust the top bracket of Tooling (B) until Dimension (X) is 222.25 mm (8.750 inch). Attach Tooling (B) to the final drive.

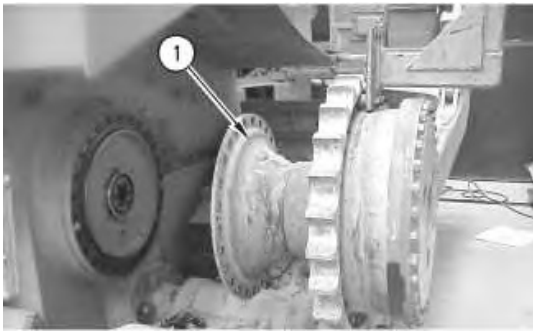


Illustration 2

g00865095

2. Use Tooling (B) to install final drive (1). The weight of final drive (1) is approximately 454 kg (1000 lb).

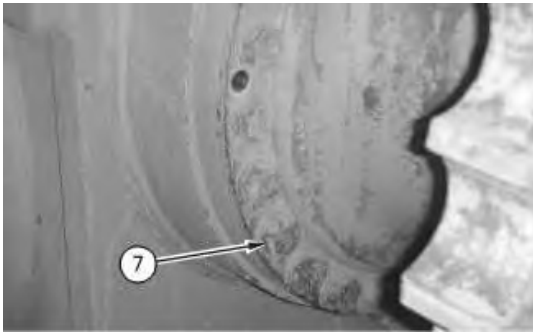


Illustration 3

g00865094

3. Install bolts (7) that hold the final drive and the steering clutch and brake together. Tighten bolts (7) to a torque of  $700 \pm 90 \text{ N}\cdot\text{m}$  ( $516 \pm 66 \text{ lb ft}$ ).

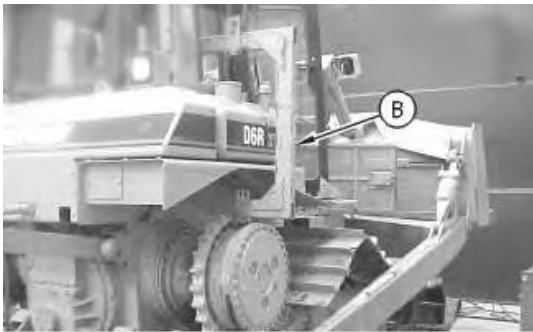
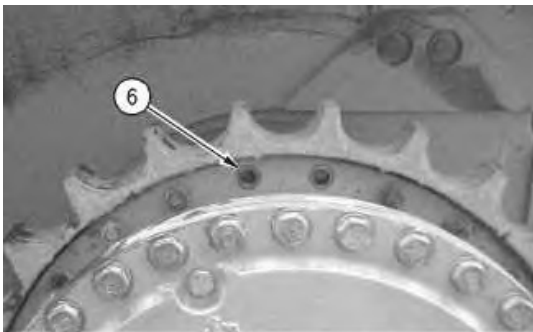


Illustration 4

g00865082

4. Remove Tooling (B) from the final drive.



5. Install two bolts (6) to the sprocket segment.

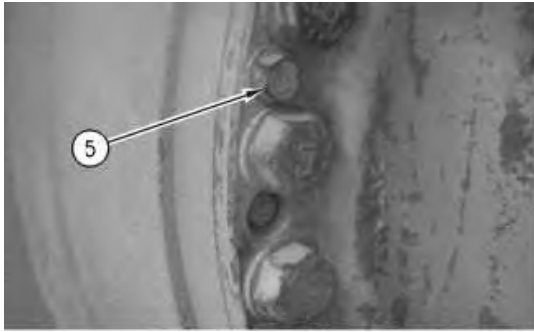


Illustration 6

g00865075

6. Install two bolts (5).

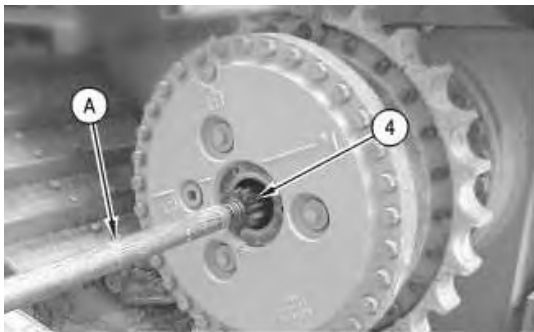


Illustration 7

g00865024

7. Use Tooling (A) to install axle (4). Remove Tooling (A).

**Note:** Carefully install the axle shaft (4) into the final drive (1). It is possible that the axle shaft (4) could damage the lip seal.

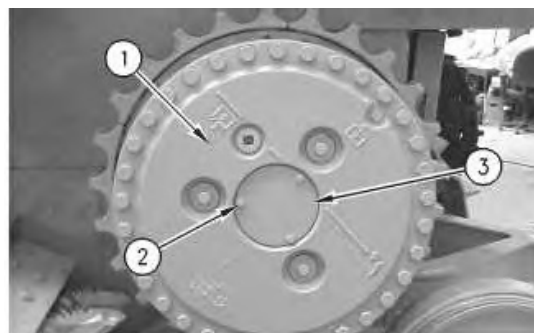


Illustration 8

g00865052

8. Install cover (3) and bolts (2) on final drive (1).

#### End By:

- a. Connect the track. Refer to Disassembly and Assembly, "Track - Connect".

Product: TRACK-TYPE TRACTOR

Model: D6R III TRACK-TYPE TRACTOR HDC

Configuration: D6R Series III TRACK-TYPE TRACTOR XL PAT, XW PAT, LGP PAT Differential Steering HDC00001-UP (MACHINE) POWERED BY C9 Engine

## Disassembly and Assembly D6R Series III Track-Type Tractor Power Train

Media Number -REN8173-06

Publication Date -01/04/2018

Date Updated -26/04/2018

i02553052

## Final Drive, Steering Differential, and Brake (Left Side) - Remove

SMCS - 4050-011-LT; 4131-011

### Removal Procedure

Table 1

Required Tools			
Tool	Part Number	Part Description	Qty
A	5B-4274	(3/8 - 16 NC - 3 1/2)	3
B	8T-3207	Lifting Bracket	1
C	138-7575	Link Bracket	1
D	8S-9906	Ratchet Puller	1

#### Start By:

- Separate the track. Refer to Disassembly and Assembly, "Track - Separate".
- Remove the axles. Refer to Disassembly and Assembly, "Axle - Remove and Install".
- Remove the steering motor. Refer to Disassembly and Assembly, "Steering Motor - Remove".

**Note:** Cleanliness is an important factor. Before the disassembly procedure, the exterior of the component should be thoroughly cleaned. This will help to prevent dirt from entering the internal mechanism.

---

### NOTICE

Care must be taken to ensure that fluids are contained during performance of inspection, maintenance, testing, adjusting, and repair of the product. Be prepared to collect the fluid with suitable containers before opening any compartment or disassembling any component containing fluids.

Refer to Special Publication, NENG2500, "Dealer Service Tool Catalog" for tools and supplies suitable to collect and contain fluids on Cat products.

Dispose of all fluids according to local regulations and mandates.

---

Thank you so much for reading.  
Please click the “Buy Now!”  
button below to download the  
complete manual.



After you pay.

You can download the most  
perfect and complete manual in  
the world immediately.

Our support email:

[ebooklibonline@outlook.com](mailto:ebooklibonline@outlook.com)