



Service Repair Manual

Models

D9N TRACK-TYPE TRACTOR

Product: TRACK-TYPE TRACTOR

Model: D9N TRACK-TYPE TRACTOR 6XJ

Configuration: D9N TRACTOR 6XJ00001-UP (MACHINE) POWERED BY 3408 ENGINE

Disassembly and Assembly D9N TRACTOR POWER TRAIN

Media Number -SEN3447-04

Publication Date -01/05/2004

Date Updated -06/12/2017

SEN34470017

Final Drives

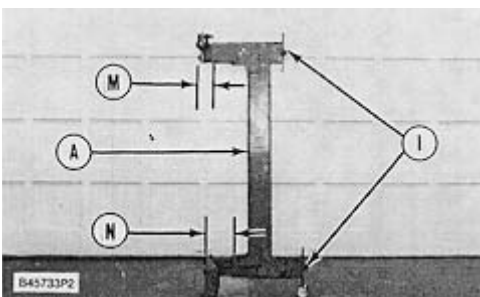
SMCS - 4050-015; 4050-016; 4050-010

Remove And Install Final Drives

Tools Needed		A
5P8622	Shackle	1
5P7284	Plate	1
142-6893	Adjustable Hook	1
5P7281	Bracket	1

Start By:

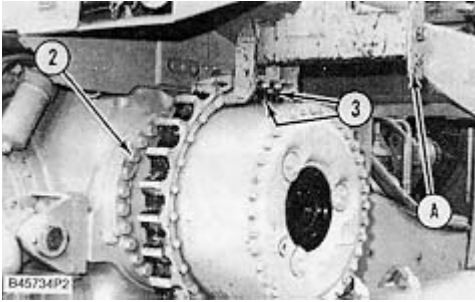
- a. separation of track
- b. remove axles (outer axle only)



WARNING

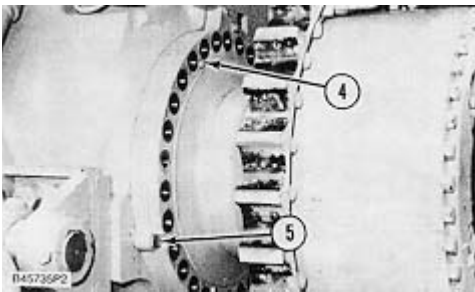
Make sure that the short support of tooling (A) is on bottom and the long support is on the top when distances (M) and (N) are made.

1. Make an adjustment to bolts (1) on tooling (A) so distance (M) is 75 mm (2.95 in.) and distance (N) is 180 mm (7.08 in.).



2. Remove three bolts from the sprocket segments. Fasten a hoist and install tooling (A) on the final drive. Make an adjustment to bolts (3) until the bolts are against the final drive hub.

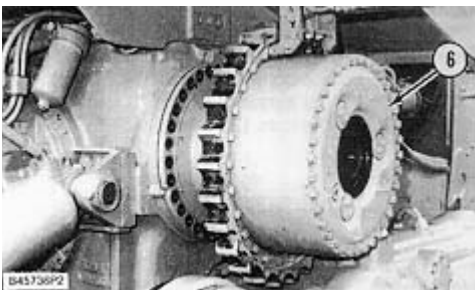
3. Remove bolts (2) that hold the final drive and steering clutch and brake to the frame.



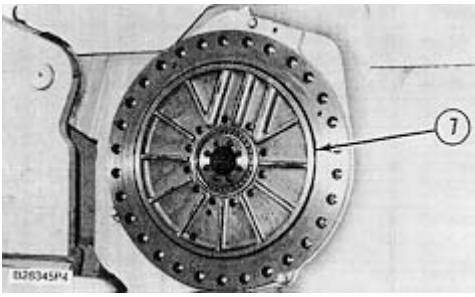
 **WARNING**

Do not remove three bolts (5) that hold the steering clutch and brake to the frame.

4. Remove three bolts (4) that hold the final drive and steering clutch and brake together.



5. Remove final drive (6) from the machine. The weight is 932 Kg (2035 lb.).



Typical Example

6. Remove O-ring seal (7) from either the face of the steering clutch or the final drive hub.

NOTE: The following steps are for installation of the final drives.

7. Inspect all O-ring seals for wear or damage and make replacements if necessary.

8. Put O-ring seal (7) in position on the steering clutches.

9. Fasten a hoist and install tooling (A) on the final drive. Make an adjustment to tooling (A), if needed, to put the final drive in a level position.

10. Put final drive (6) in position on the machine.

11. Install three 1/2" bolts (4) that hold the final drive to the steering clutch and brake.

12. Install bolts (2) that hold the final drive in place. Tighten the bolts to a torque of 1150 ± 150 N*m (850 ± 110 lb.ft.). Remove tooling (A).

13. Make a thick mixture of SAE 30W oil and Flowers of Sulfur or a similar lubricant. Put the lubricant on the thread of the segment bolts. Install the bolts and nuts (with the head of the bolts against the final drive). Tighten the nuts to a torque of 650 ± 70 N*m (480 ± 50 lb.ft.). Tighten the nuts 120° more.

End By:

a. install axles (outer axle only)

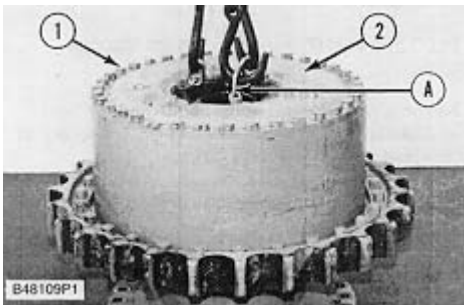
b. connection of track

Disassemble Final Drives

Tools Needed		A	B	C	D	E	F
138-7575	Link Bracket	3					
8B7548	Push Puller		1				
8H684	Ratchet Wrench		1				
8B7554	Bearing Cup Puller Attachment		1				
138-7573	Link Bracket			3			
1P520	Driver Group				1		
1P527	Plate					1	
6V3175	Hydraulic Cylinder					1	
5P9695	Plate					1	
2S4680	Stud					3	
5H1504	Washer					3	
6B6682	Nut					3	
FT1409	Spacer					6	
3S-6224	Pump Group (electric)					1	
138-7574	Link Bracket						2

Start By:

a. remove final drive



1. Install tooling (A) on the planetary carrier. Fasten a hoist to tooling (A).
2. Remove bolts (1) that hold the planetary carrier to the hub.
3. Remove planetary carrier (2) from the hub. The weight is 170 Kg (375 lb.).

Thank you so much for reading.
Please click the “Buy Now!”
button below to download the
complete manual.



After you pay.

You can download the most
perfect and complete manual in
the world immediately.

Our support email:

ebooklibonline@outlook.com