

Product: TRACK-TYPE TRACTOR

Model: D9R TRACK-TYPE TRACTOR 8BL

Configuration: D9R Track-Type Tractor Power Shift 8BL01053-UP (MACHINE) POWERED BY 3408 Engine

Disassembly and Assembly D9R Track-Type Tractor Power Train

Media Number -SEN5387-14

Publication Date -01/08/2018

Date Updated -30/08/2018

i05768467

Final Drive Planetary Carrier (In Chassis) - Install

SMCS - 4092-012

Installation Procedure

Table 1

Required Tools			
Tool	Part Number	Part Description	Qty
A	5P-8622	Shackle	1
	151-2816	Plate	1
	142-6893	Adjustable Hook Gp	1
	5P-8732	Adapter	1
	1D-4609	Bolt	3
	2J-3505	Full Nut	3
	5H-1504	Hard Washer	6
B	6V-3170	Double Acting Cylinder	1
	6V-3009	Crossbar	1
	9U-6600	Hand Hydraulic Pump	1
C	1P-1837	Bearing Puller Adapter	2
D	1P-0520	Driver Group	1

1. Make sure that all of the parts are clean. Inspect all of the parts. Make replacements, if necessary.

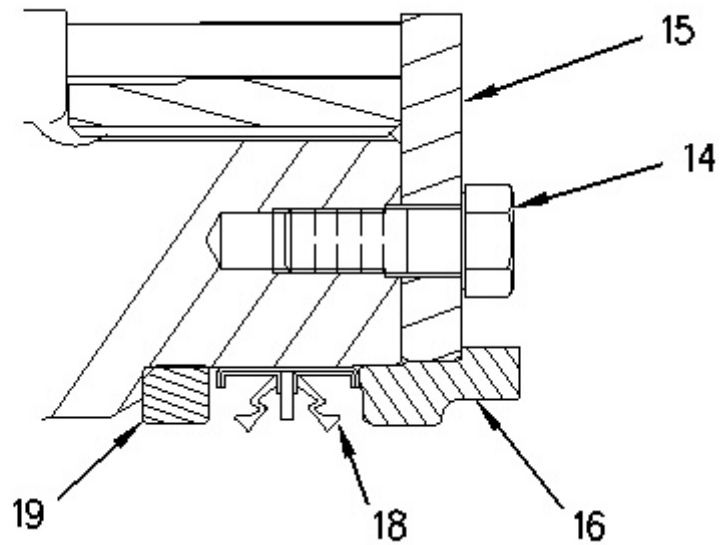


Illustration 1

g00627127

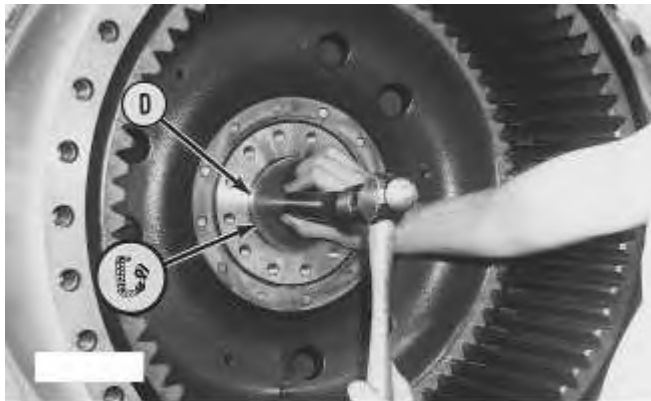


Illustration 2

g00627126

2. Lower the temperature of the sleeve bearing if sleeve bearing (19) has been removed. Install the sleeve bearing with Tooling (D) .
 3. Use Tooling (D) to install the lip seal in the hub. If Tooling (D) is not available, retainer (15) may be installed. Ring (6) and a soft hammer may be used to install lip seal (18) .
 4. Put clean oil on the lip of the seal.
-

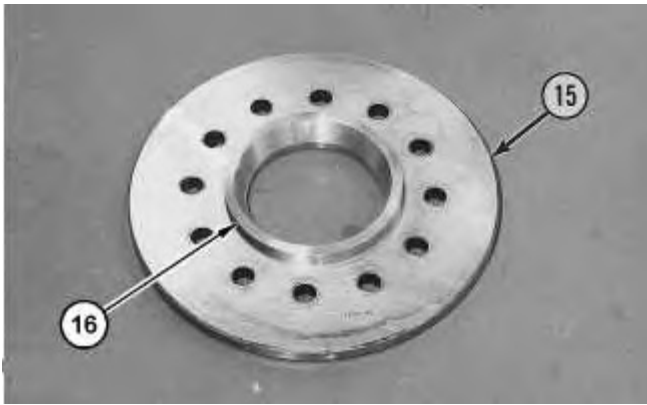


Illustration 3

g01092639

5. Use Tooling (D) and a suitable press in order to install ring (16) in retainer (15) .

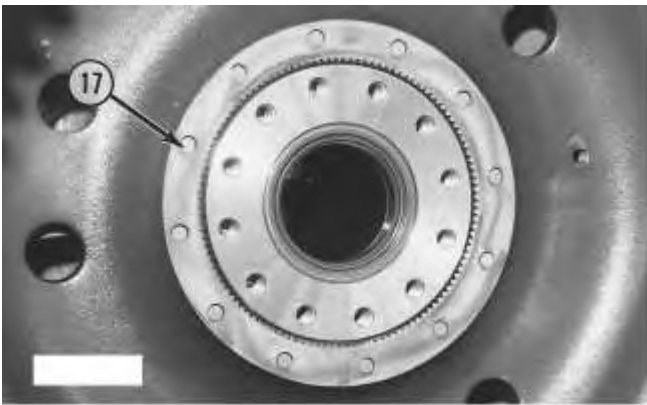


Illustration 4

g00627125

6. Install pins (17) in the holes that are in the hub.

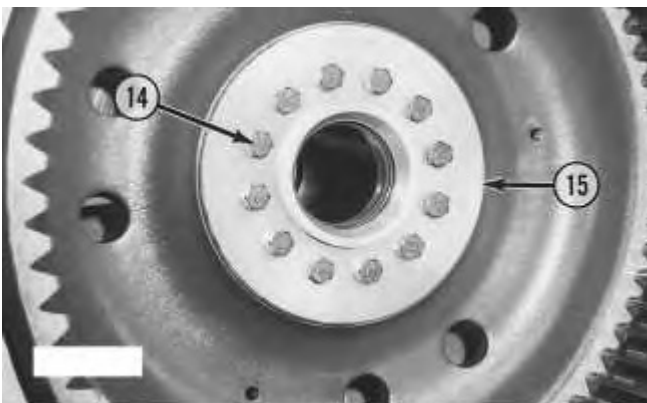


Illustration 5

g00627123

- Put retainer (15) in position on the hub. Install bolts (14) that hold the retainer in place. Tighten the bolts to a torque of $135 \pm 15 \text{ N}\cdot\text{m}$ ($100 \pm 11 \text{ lb ft}$).

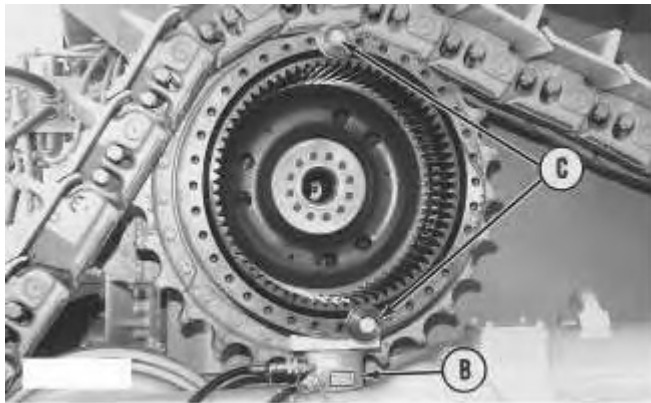


Illustration 6

g00627129

- Remove Tooling (B) and Tooling (C) from the final drive.

Note: For assembly of the planetary carriers, see Disassembly and Assembly, "Final Drive - Assemble".

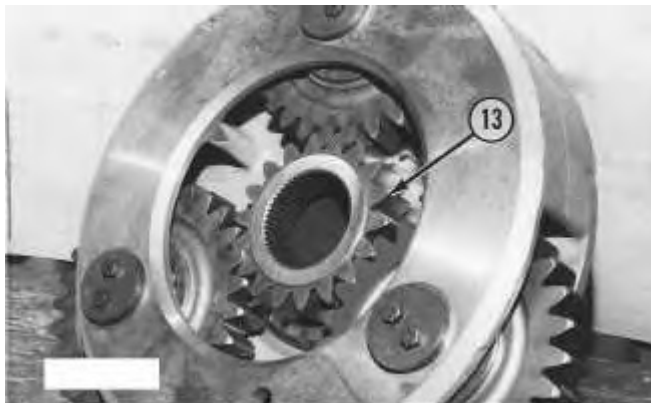


Illustration 7

g00627120

- Put sun gear (13) in position in the planetary carrier.
-

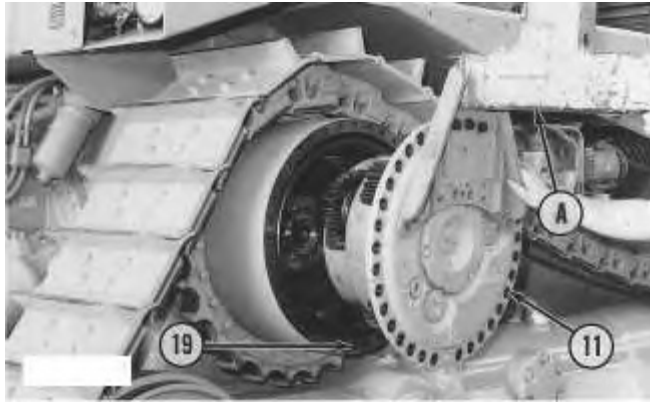


Illustration 8

g00627130

10. Put Tooling (A) in position on the planetary carrier. Make sure that O-ring seal (19) is in position on the hub.
11. Make an alignment of the gears and slide planetary carrier (11) into the hub. Push the planetary carrier inward. The planetary carriers should be approximately 2.54 cm (1.000 inch) from the final drive hub.

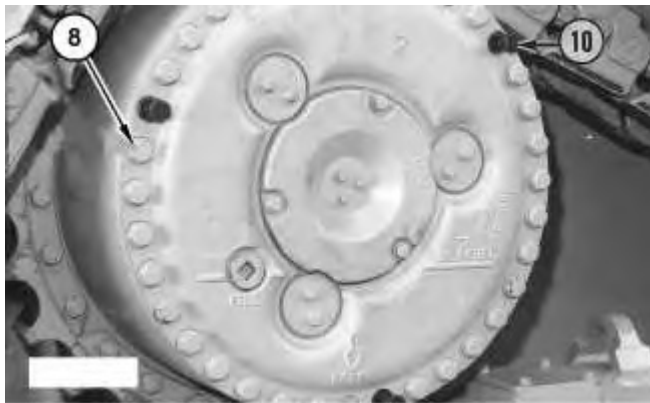


Illustration 9

g01092638

12. Install three bolts (10) that are 3/4 inch - 10 NC x 3.5 inch. The bolts should be installed at even distances from each other. Remove Tooling (A) . Install bolts (8) that hold the planetary carrier in position. Remove bolts (10) and install the other three bolts that hold the planetary carrier in position. Tighten bolts (8) to a torque of 430 ± 60 N·m (317 ± 44 lb ft).

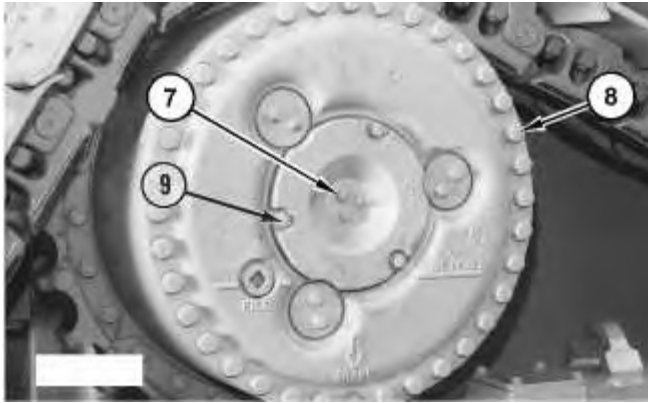


Illustration 10

g01092637

13. Remove three bolts (7) from the center of cover (6) . Remove three bolts (9) and cover (6) from the final drive.

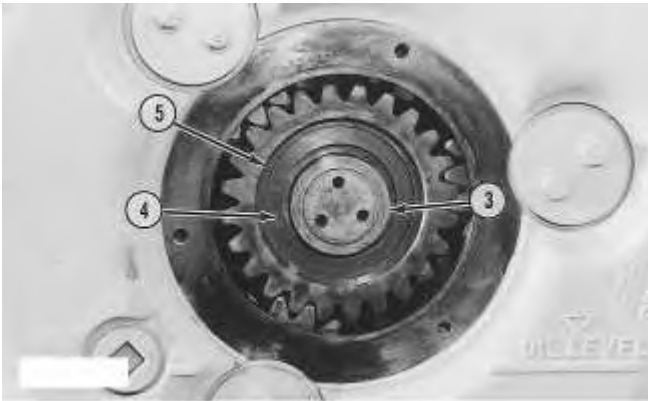


Illustration 11

g00627133

14. Remove spiral lockring (5) , ring (4) , and retainer (3) .

End By: Install the axles. See Disassembly and Assembly, "Axle - Install".

Product: TRACK-TYPE TRACTOR

Model: D9R TRACK-TYPE TRACTOR 8BL

Configuration: D9R Track-Type Tractor Power Shift 8BL01053-UP (MACHINE) POWERED BY 3408 Engine

Disassembly and Assembly D9R Track-Type Tractor Power Train

Media Number -SEN5387-14

Publication Date -01/08/2018

Date Updated -30/08/2018

i03477582

Final Drive - Disassemble

SMCS - 4050-015

Disassembly Procedure

Table 1

Required Tools			
Tool	Part Number	Part Description	Qty
A	138-7575	Link Bracket	3
B	8B-7548	Push-Puller Tool Group	1
	8H-0684	Ratchet Wrench	1
	8B-7554	Bearing Cup Puller	1
C	138-7573	Link Bracket	3
D	1P-0520	Driver Group	1
E	1P-0527	Plate	1
	6V-3160	Hydraulic Cylinder Gp	1
	5P-9695	Pressure Plate	1
	2S-4680	Stud	3
	5H-1504	Hard Washer	3
	6B-6682	Full Nut	3
	FT-1409	Spacer	6
	9U-6600	Hand Hydraulic Pump	1
F	138-7574	Link Bracket	2

Thank you so much for reading.
Please click the “Buy Now!”
button below to download the
complete manual.



After you pay.

You can download the most
perfect and complete manual in
the world immediately.

Our support email:

ebooklibonline@outlook.com