

**JOHN DEERE**  
**WORLDWIDE COMMERCIAL & CONSUMER**  
**EQUIPMENT DIVISION**

---

**GATOR™ Compact Series Utility Vehicle**  
**CX**

**OMM162861 L9**

**OPERATOR'S MANUAL**



**JOHN DEERE**

Export Version  
Litho in U.S.A.

# INTRODUCTION

---

## Thank You for Purchasing a John Deere Product

We appreciate having you as a customer and wish you many years of safe and satisfied use of your machine.

## Using Your Operator's Manual

This manual is an important part of your machine and should remain with the machine when you sell it.

Reading your operator's manual will help you and others avoid personal injury or damage to the machine. Information given in this manual will provide the operator with the safest and most effective use of the machine. Knowing how to operate this machine safely and correctly will allow you to train others who may operate this machine.

If you have an attachment, use the safety and operating information in the attachment operator's manual along with the machine operator's manual to operate the attachment safely and correctly.

This manual and safety signs on your machine may also be available in other languages (see your authorized dealer to order).

Sections in your operator's manual are placed in a specific order to help you understand all the safety messages and learn the controls so you can operate this machine safely. You can also use this manual to answer any specific operating or servicing questions. A convenient index located at the end of this book will help you to find needed information quickly.

The machine shown in this manual may differ slightly from your machine, but will be similar enough to help you understand our instructions.

RIGHT-HAND and LEFT-HAND sides are determined by facing in the direction the machine will travel when going forward. When you see a broken line (-----), the item referred to is hidden from view.

Before delivering this machine, your dealer performed a predelivery inspection to ensure best performance.

## Machine Use

This utility vehicle is designed for light-duty personal and commercial use. The towing, hauling and payload capacity of this machine make it ideal to assist homeowners around their properties and for light-duty commercial applications. Use in any other way or beyond the stated specifications of this machine is considered contrary to the intended use.

This machine is not intended for use in forestry operations. The operator station does not provide adequate protection

to the occupants in that environment.

This machine is not intended for use in spraying operations where hazardous substances may be used.

The manufacturer accepts no liability for damage or injury resulting from this misuse, and these risks must be borne solely by the user. Compliance with and strict adherence to the conditions of operation, service and repair as specified by the manufacturer also constitute essential elements for the intended use.

This machine should be operated, serviced and repaired only by persons familiar with all its particular characteristics and acquainted with the relevant safety rules (accident prevention). The accident prevention regulations, all other generally recognized regulations on safety and occupational medicine and the road traffic regulations must be observed at all times.

Setting fuel delivery beyond published factory specifications or otherwise overpowering will result in loss of warranty protection for this machine.

Any arbitrary modifications carried out on this machine will relieve the manufacturer of all liability for any resulting damage or injury.

## Special Messages

Your manual contains special messages to bring attention to potential safety concerns, machine damage as well as helpful operating and servicing information. Please read all the information carefully to avoid injury and machine damage.



**CAUTION: Avoid injury! This symbol and text highlight potential hazards or death to the operator or bystanders that may occur if the hazards or procedures are ignored.**

**IMPORTANT: Avoid damage! This text is used to tell the operator of actions or conditions that might result in damage to the machine.**

**NOTE: General information is given throughout the manual that may help the operator in the operation or service of the machine.**

# PRODUCT IDENTIFICATION

---

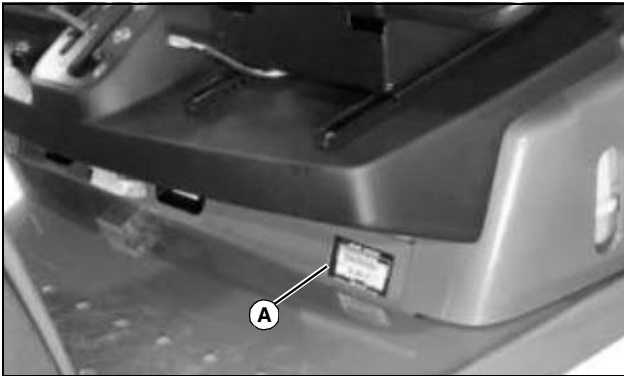
## Record Identification Numbers

### GATOR Compact Series Utility Vehicle

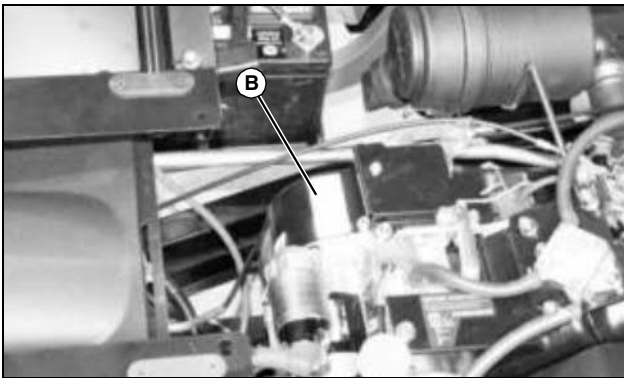
CX PIN (080001-)

If you need to contact your John Deere dealer for information on servicing, always provide the product model and identification numbers.

You will need to locate the model and serial number for the machine and for the engine of your machine and record the information in the spaces provided below.



MX34003a



MX34004

DATE OF PURCHASE:

\_\_\_\_\_

DEALER NAME:

\_\_\_\_\_

DEALER PHONE:

\_\_\_\_\_

PRODUCT IDENTIFICATION NUMBER (A):

-----

ENGINE SERIAL NUMBER (B):

-----

# TABLE OF CONTENTS

---

Safety Labels .....	1
Safety .....	3
Operating .....	8
Replacement Parts .....	20
Service Intervals .....	21
Service Lubrication .....	22
Service Engine .....	23
Service Transmission .....	28
Service Electrical .....	32
Service Miscellaneous .....	35
Troubleshooting .....	41
Storage .....	44
Assembly .....	46
Specifications .....	48
Declaration of Conformity .....	51
Index .....	52

Original Instruction

All information, illustrations and specifications in this manual are based on the latest information at the time of publication. The right is reserved to make changes at any time without notice.

COPYRIGHT© 2010

Deere & Co.

John Deere Worldwide Commercial and Consumer Equipment Division

All rights reserved

Previous Editions

COPYRIGHT©

OMM162861 L9 - English

# SAFETY LABELS

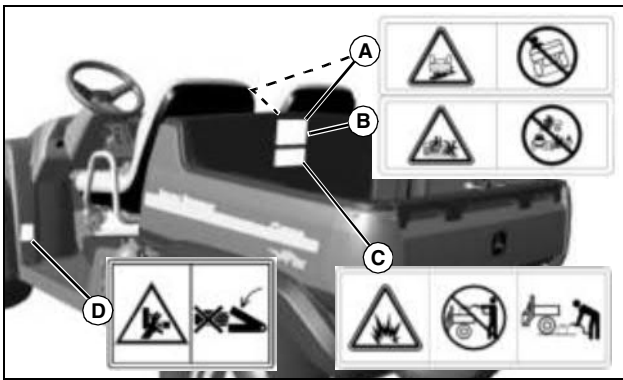


## Pictorial Safety Signs

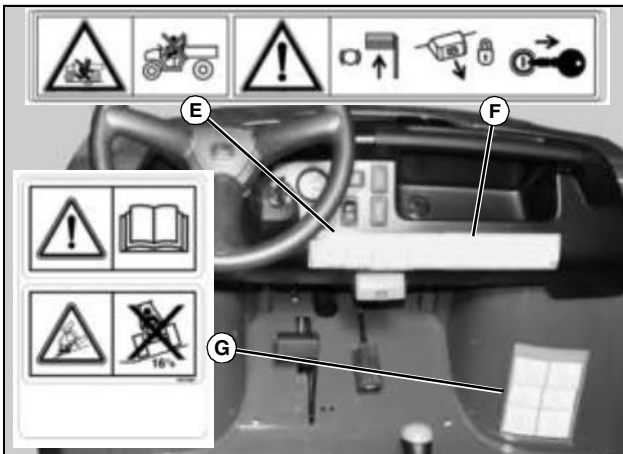
At several important places on this machine safety signs are affixed intended to signify potential danger. The hazard is identified by a pictorial in a warning triangle. An adjacent pictorial provides information how to avoid personal injury. These safety signs, their placement on the machine and a brief explanatory text are shown in this Safety section.

There can be additional safety information contained on parts and components sourced from suppliers that is not reproduced in this operator's manual.

## Safety Labels



M153485, M151630, MX22010, M120057



M152241, VG11561, MX30447a

### Rollover or Falling Off May Cause Death (A)

- Read operator's manual.
- Drive very slowly when turning.
- Always use brakes going down a slope. Vehicle can take-off (freewheel) downhill.

### Riders Can Fall Off and Be Killed (B)

- Maximum of one person to a seat.

- No riders in box or anywhere else.

### Avoid Injury From Explosion (C)

- Do not place gas container inside cargo box bed when filling.
- Always place gas container on ground when filling.

### Help Prevent Injury When Dumping Loads (D)

- Operate dump with machine stationary and parking brake locked: Never dump while moving.
- Operate dump on level ground only.
- Operate dump from operator's seat only.
- Do not place hands behind seat when lowering box.
- Refer to Operator's manual for correct load distribution.

### Read Operator's Manual

- This operator's manual contains important information necessary for safe machine operation. Observe all safety rules to avoid accidents.

### Young Drivers Increase Chance of Death (E)

- Young drivers may not be able to control vehicle.
- No drivers younger than 16 years old.

### Before Leaving Vehicle (F):

- Stop engine
- Set park brake
- Remove key

### Rollover or Falling Off May Cause Death (G)

- Read operator's manual.
- Drive very slowly when turning.
- Always use brakes going down a slope. Vehicle can take-off (freewheel) downhill.
- Do not drive where machine could slip or tip. Do not drive on slope with more than a 16° incline.
- Reduce speed and load on rough or hilly ground.
- No loads heavier than 400 lbs (180 kg).
- Spread loads evenly. Tie loads down.

Thank you so much for reading.  
Please click the “Buy Now!”  
button below to download the  
complete manual.



After you pay.

You can download the most  
perfect and complete manual in  
the world immediately.

Our support email:

[ebooklibonline@outlook.com](mailto:ebooklibonline@outlook.com)