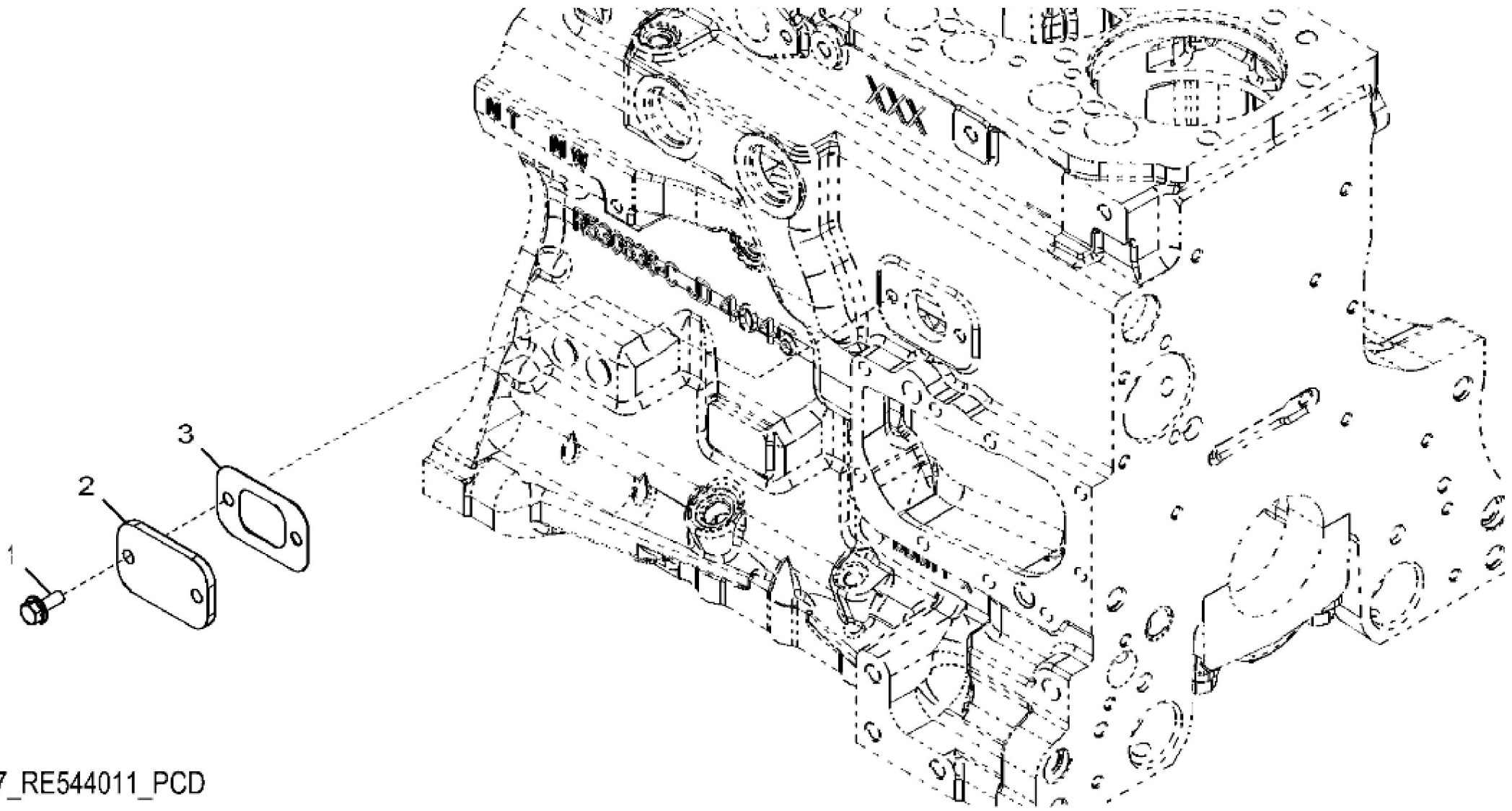


John Deere > Turf And Utility > TRACTOR > 6130R - TRACTOR > 6130R Tractor (North America Edition, Engine SN: 4045UXXXXXX)(Final Tier 4) > E1 ENGINE 4045HL500-DD22292-ETN122284-ETN122286-ETN131686 > E100 ENGINE 4045HL500-DD22292-ETN122284-ETN122286-ETN131686 4045HL500 > ST400926 - 1183 ROCKER ARM COVER

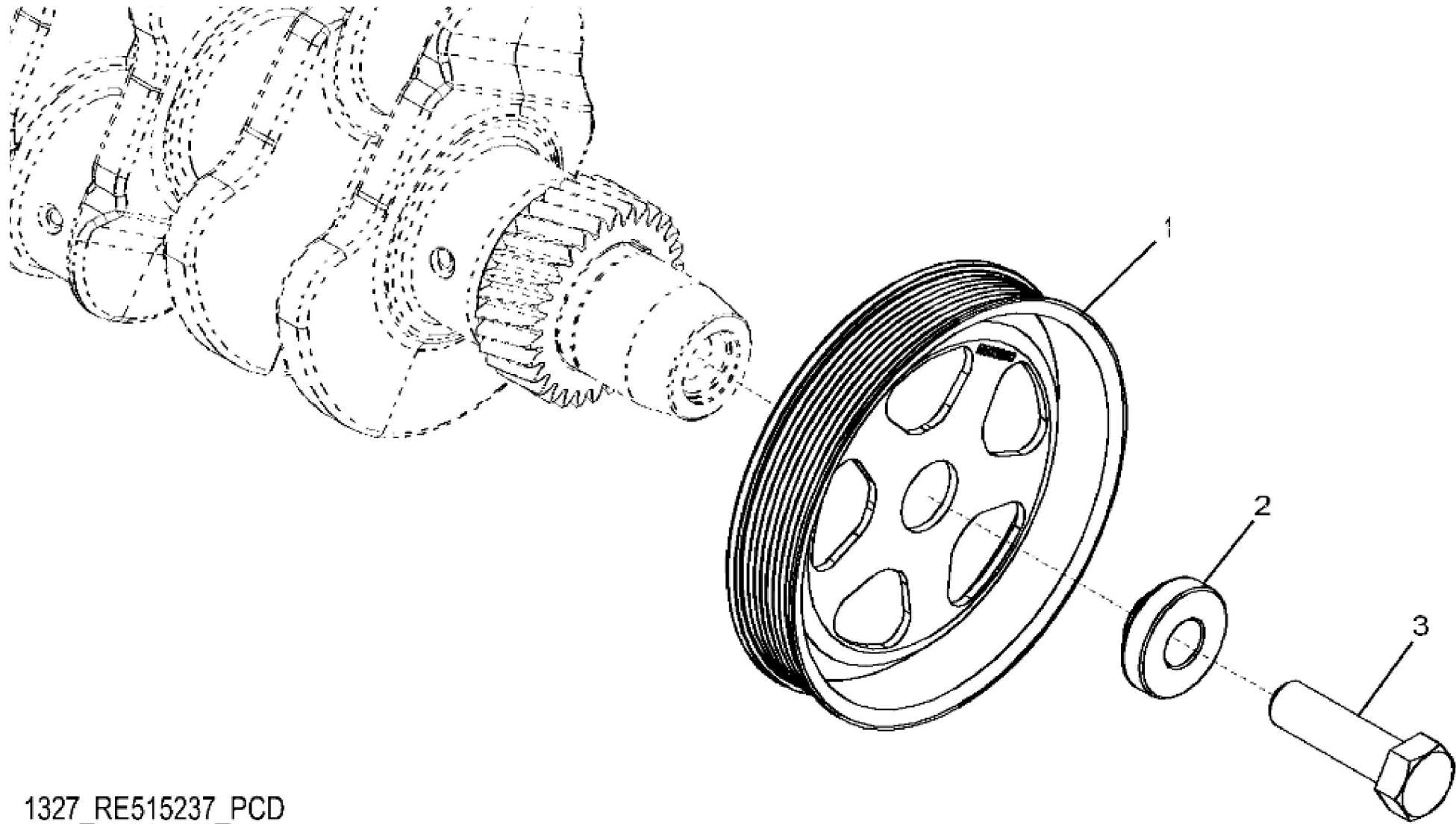
| KEY | PART NO. | PART NAME | QTY | REMARKS |
|-----|----------|-------------|-----|----------------------------------|
| 1 | R524499 | GASKET | 1 | |
| 2 | 19M7775 | SCREW | 2 | M6 X 16 |
| 3 | R515555 | DEFLECTOR | 1 | |
| 4 | R543296 | HOSE | 1 | |
| 5 | TY22462 | CLAMP | 1 | |
| 6 | RE561710 | VALVE COVER | 1 | MARKED R540192 |
| 7 | RE542918 | VALVE | 1 | USE WITH RE561710 |
| 8 | R123575 | O-RING | 5 | |
| 9 | R521390 | SCREW | 5 | |
| 10 | H23125 | PLUG | 5 | |
| 11 | R529614 | VALVE COVER | 1 | ORDER RE561710 |
| 12 | R532038 | VALVE | 1 | ORDER RE542918; USE WITH R529614 |



1297_RE544011_PCD

John Deere > Turf And Utility > TRACTOR > 6130R - TRACTOR > 6130R Tractor (North America Edition, Engine SN: 4045UXXXXXX)(Final Tier 4) > E1 ENGINE 4045HL500-DD22292-ETN122284-ETN122286-ETN131686 > E100 ENGINE 4045HL500-DD22292-ETN122284-ETN122286-ETN131686 4045HL500 > ST402282 - 1297 OIL FILLER COVER

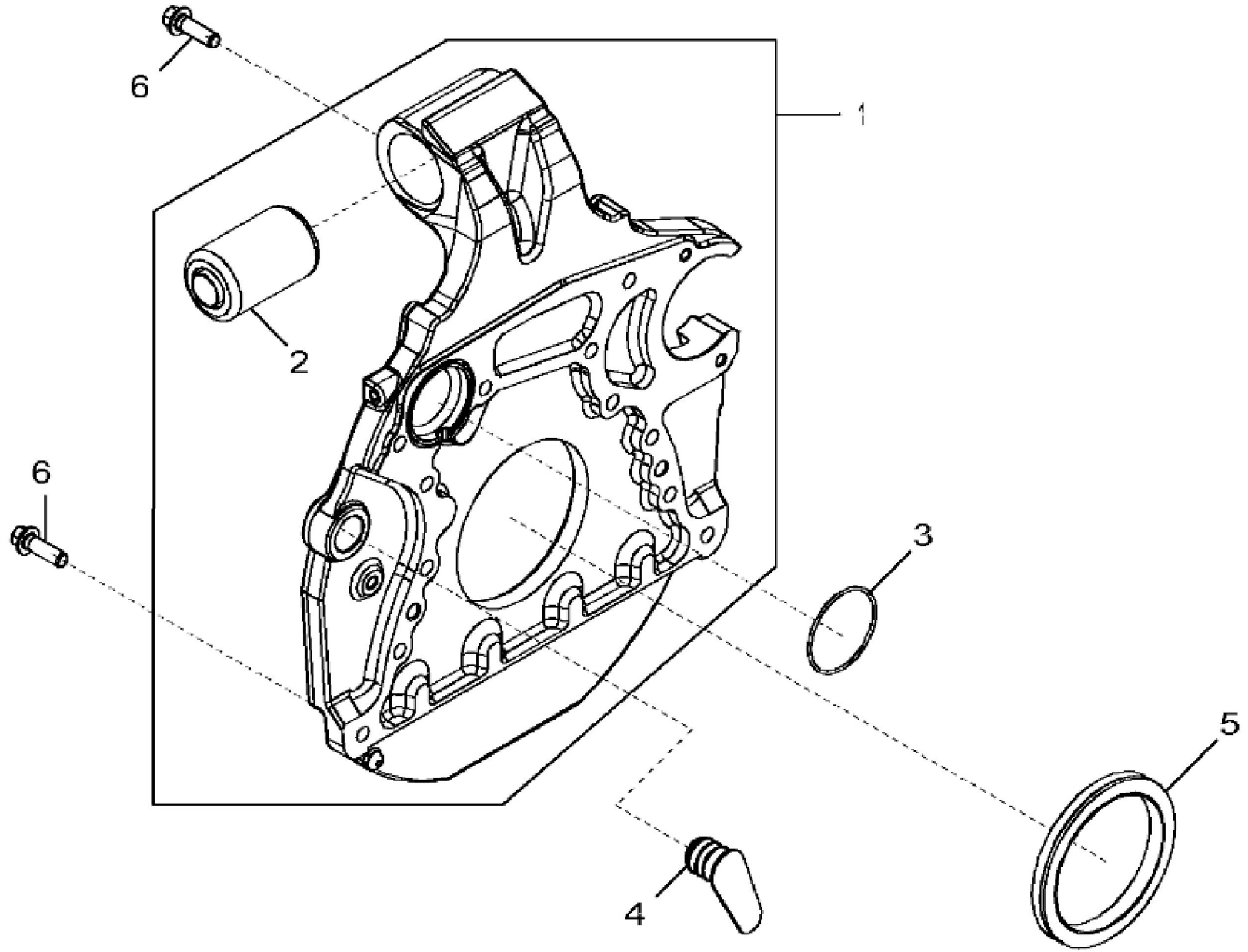
| KEY | PART NO. | PART NAME | QTY | REMARKS | |
|-----|----------|-----------|-----|------------------------------------|--|
| 1 | RE67238 | SCREW | 2 | (Threads With Pre-Applied Sealant) | |
| 2 | R116296 | COVER | 1 | | |
| 3 | R136495 | GASKET | 1 | | |



1327_RE515237_PCD

John Deere > Turf And Utility > TRACTOR > 6130R - TRACTOR > 6130R Tractor (North America Edition, Engine SN: 4045UXXXXXX)(Final Tier 4) > E1 ENGINE 4045HL500-DD22292-ETN122284-ETN122286-ETN131686 > E100 ENGINE 4045HL500-DD22292-ETN122284-ETN122286-ETN131686 4045HL500 > ST308624 - 1327 CRANKSHAFT PULLEY

| KEY | PART NO. | PART NAME | QTY | REMARKS | |
|-----|----------|-----------|-----|-------------|--|
| 1 | R503880 | PULLEY | 1 | OD = 188 mm | |
| 2 | R515040 | BUSHING | 1 | OD = 50 mm | |
| 3 | R516648 | CAP SCREW | 1 | M20 X 70 | |



Thank you so much for reading.
Please click the “Buy Now!”
button below to download the
complete manual.



After you pay.

You can download the most
perfect and complete manual in
the world immediately.

Our support email:

ebooklibonline@outlook.com