

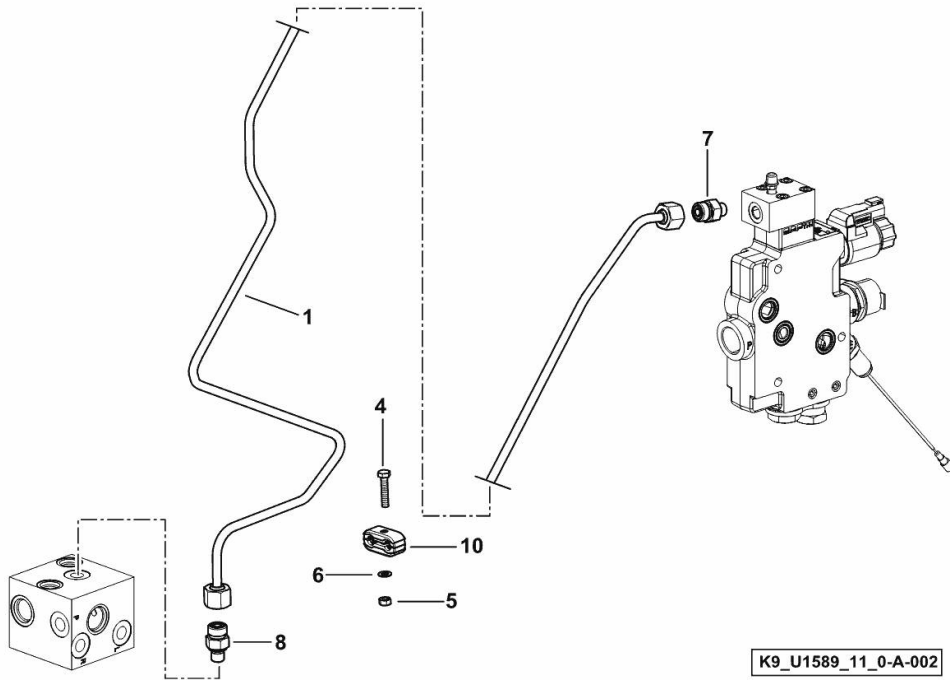
**HYDRAULIC TRAILER BRAKING SYSTEM**

| Fig. | P/n | QTY | Name |
|------|-----|-----|------|
|------|-----|-----|------|

**Notes:**

[6180 Agrottron ->WSXU270200LD50001] -> 50009

|    |              |   |                   |
|----|--------------|---|-------------------|
| 1  | 0.018.7648.3 | 1 | tube              |
| 4  | 2.0112.011.2 | 1 | screw m 6 p.1x30  |
| 5  | 2.1011.103.2 | 1 | nut m 6 p.1       |
| 6  | 2.1475.001.7 | 1 | washer 6.4x12     |
| 7  | 2.3249.350.2 | 1 | pipe fitting m 12 |
| 8  | 2.3272.005.0 | 1 | pipe fitting m 12 |
| 10 | 2.3321.004.0 | 1 | terminal Ø 8/8    |



6180 Agrottron ->WSXU270200LD50001

Section: H0 - HYDRAULIC AND PNEUMATIC SYSTEM|

Ref: H0.09.4 (1)

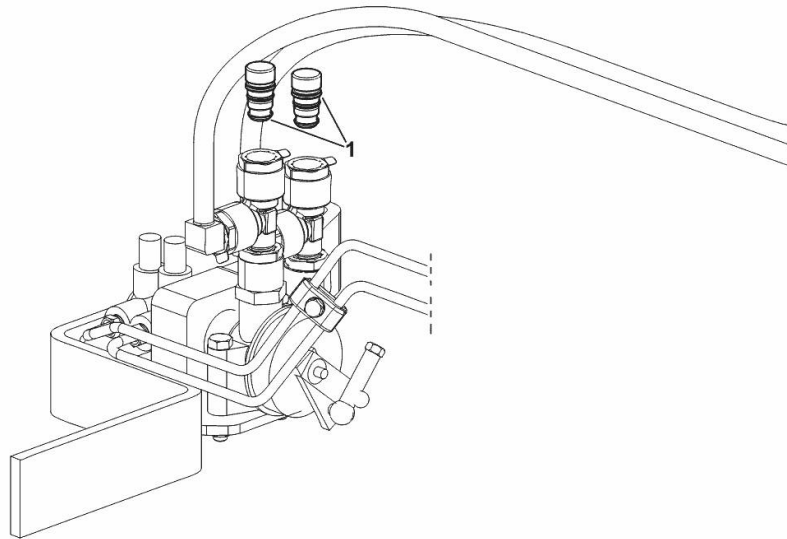
**AIR BRAKING SYSTEM PACKAGE**

| Fig. | P/n | QTY | Name |
|------|-----|-----|------|
|------|-----|-----|------|

**Notes:**

[6180 Agrottron ->WSXU270200LD50001] -> 50002

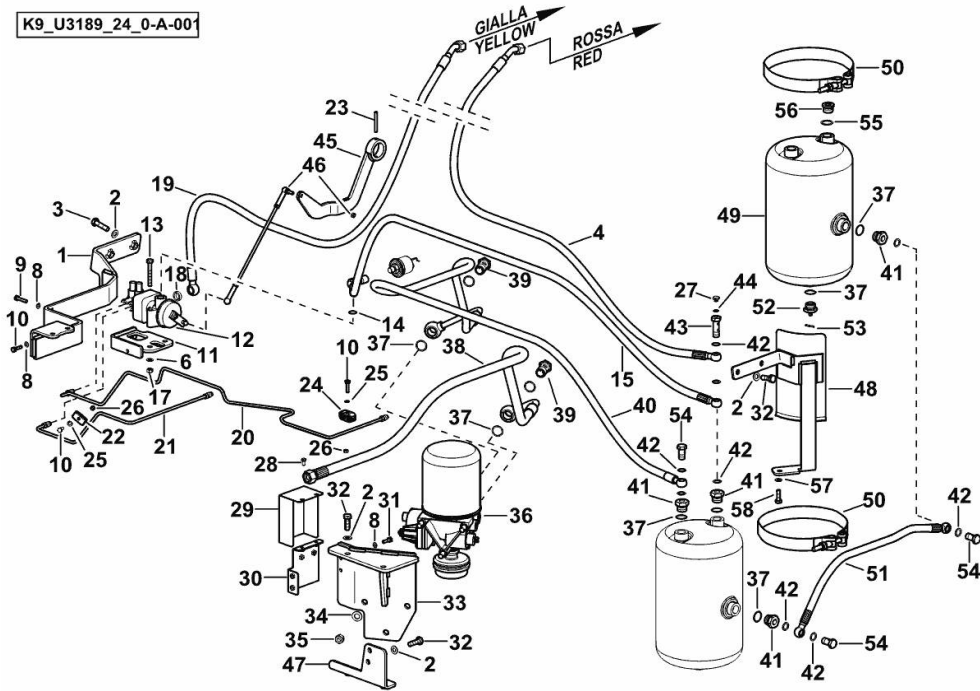
|   |              |   |           |
|---|--------------|---|-----------|
| 1 | 2.3249.672.0 | 2 | plug NG12 |
|---|--------------|---|-----------|



K9\_U1589\_28\_0-A-001

**AIR BRAKING SYSTEM**

K9\_U3189\_24\_0-A-001



| Fig. | P/n | QTY | Name |
|------|-----|-----|------|
|------|-----|-----|------|

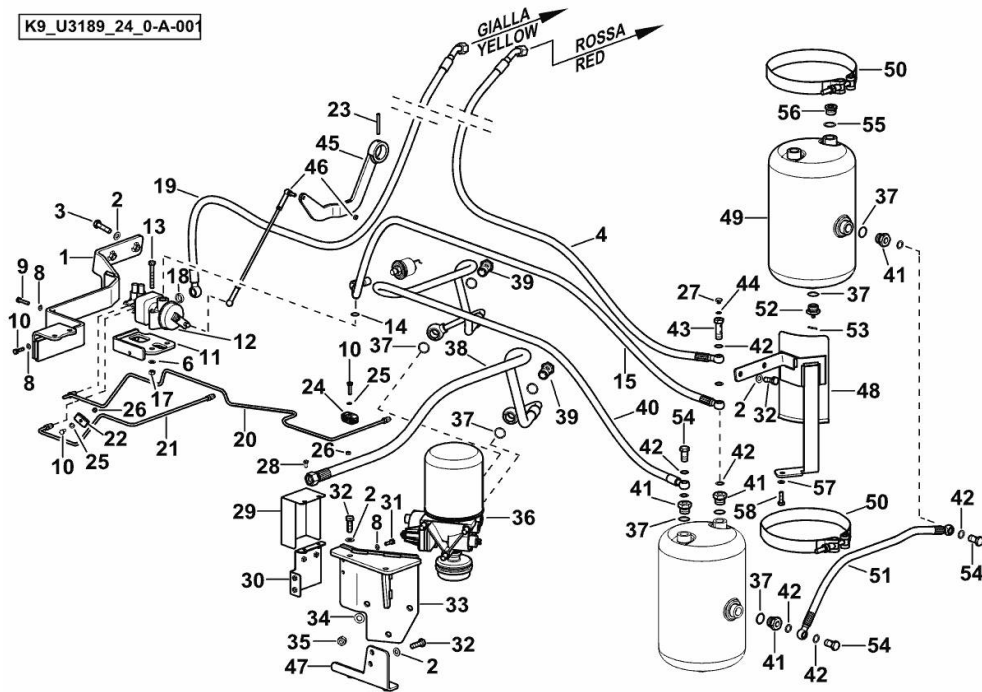
Notes:

[6180 Agrottron ->WSXU270200LD50001] 50008 <-

|    |                 |   |                                 |
|----|-----------------|---|---------------------------------|
| 1  | 0.018.6719.3    | 1 | bracket                         |
| 2  | 2.1310.006.2    | 8 | flat washer 10.5x21             |
| 3  | 2.0112.315.2    | 2 | screw m 10 p.1.5 x 40           |
| 4  | 0.018.5301.3/10 | 1 | tube                            |
| 6  | 2.1310.004.2    | 2 | flat washer 8.4x17              |
| 8  | 2.1310.002.2    | 4 | flat washer 6.4x12.5            |
| 9  | 2.0112.011.2    | 1 | screw m 6 p.1x30                |
| 10 | 2.0112.009.2    | 3 | screw m 6 p.1 x 25              |
| 11 | 0.018.5289.3    | 1 | bracket                         |
| 12 | 04419935        | 1 | valve<br>☞ 04419935             |
| 13 | 2.0112.221.2    | 2 | screw m 8 p.1.25 x 60           |
| 14 | 2.1560.011.0    | 1 | copper gasket 16.2x20           |
| 15 | 0.018.5302.3    | 1 | tube                            |
| 17 | 2.1011.105.2    | 2 | nut m 8 p.1.25                  |
| 18 | 2.1569.154.0    | 1 | gasket 16.2x22x6                |
| 19 | 0.018.5303.3/10 | 1 | tube                            |
| 20 | 0.018.8620.3/10 | 1 | tube                            |
| 21 | 0.018.8638.3    | 1 | tube                            |
| 22 | 2.3321.002.0    | 1 | terminal Ø 6.35                 |
| 23 | 2.1630.617.2    | 1 | pin 6x50                        |
| 24 | 2.3321.004.0    | 1 | terminal Ø 8/8                  |
| 25 | 2.1475.001.7    | 2 | washer 6.4x12                   |
| 26 | 2.1011.103.2    | 2 | nut m 6 p.1                     |
| 27 | 2.3110.510.1    | 1 | plug 1/8" gas                   |
| 28 | 2.0112.003.2    | 2 | screw m 6 p.1 x 12              |
| 29 | 0.017.1909.0    | 1 | cover                           |
| 30 | 0.018.5286.3    | 1 | bracket                         |
| 31 | 2.0112.007.2    | 2 | screw m 6 p.1 x 20              |
| 32 | 2.0112.311.2    | 6 | screw m 10 p.1.5 x 30           |
| 33 | 0.019.1980.2    | 1 | bracket                         |
| 34 | 2.1310.007.2    | 3 | flat washer 13 x 24             |
| 35 | 2.1011.107.2    | 3 | nut m 12 p.1.75                 |
| 36 | 0.017.0166.4    | 1 | filter<br>☞ 0.017.0166.4        |
| 37 | 2.1560.017.0    | 9 | gasket 22.2 x 27                |
| 38 | 0.018.5299.3/10 | 1 | tube                            |
| 39 | 2.3335.009.2    | 2 | pipe union m 22 p.1.5 x 39      |
| 40 | 0.019.2512.3    | 1 | tube                            |
| 41 | 2.3339.766.2    | 4 | reduction m 22 p.1.5/m 14 p.1.5 |
| 42 | 2.1560.010.0    | 9 | gasket 14.2 x 20                |

**AIR BRAKING SYSTEM**

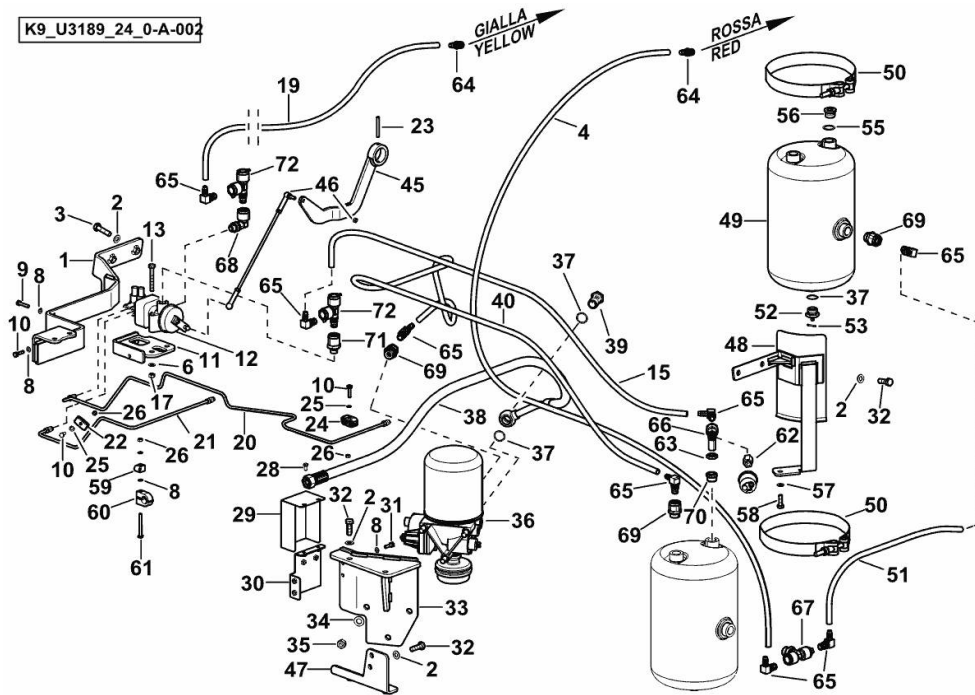
K9\_U3189\_24\_0-A-001



| Fig. | P/n             | QTY | Name                       |
|------|-----------------|-----|----------------------------|
| 43   | 2.3339.911.2/10 | 1   | pipe union m 14 p.1.5      |
| 44   | 2.1560.051.0    | 1   | gasket 10x13.5             |
| 45   | 0.019.5059.2    | 1   | lever                      |
| 46   | 0.019.0145.4/10 | 1   | rod                        |
| 47   | 0.018.8334.3    | 1   | bracket                    |
| 48   | 0.019.2446.2/10 | 1   | support                    |
| 49   | 04414694/10     | 1   | tank                       |
| 50   | 2.6859.101.0    | 2   | clamp                      |
| 51   | 0.018.6536.3    | 1   | tube                       |
| 52   | 0.012.3383.0    | 1   | valve                      |
| 53   | 2.1690.306.2    | 1   | split pin 3.2 x 16         |
| 54   | 2.3332.004.2    | 3   | pipe union m 14 p.1.5 x 27 |
| 55   | 2.1560.018.0    | 1   | gasket 22.2 x 29           |
| 56   | 2.3120.002.4    | 1   | plug m 22 x 1.5            |
| 57   | 2.1475.202.2    | 1   | spring washer 8.4 x 16     |
| 58   | 2.0112.209.2    | 1   | screw m 8 p 1.25 x 25      |

**AIR BRAKING SYSTEM**

K9\_U3189\_24\_0-A-002



| Fig. | P/n | QTY | Name |
|------|-----|-----|------|
|------|-----|-----|------|

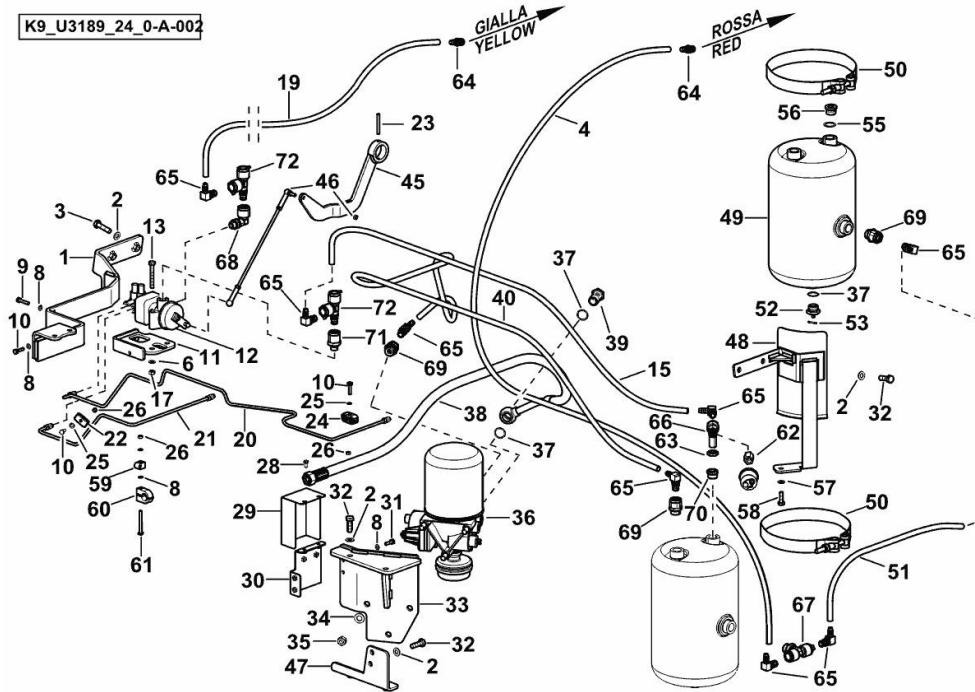
**Notes:**

[6180 Agrottron ->WSXU270200LD50001]-> 50010 - 50037 <-

|    |                 |      |                            |
|----|-----------------|------|----------------------------|
| 1  | 0.018.6719.3    | 1    | bracket                    |
| 2  | 2.1310.006.2    | 8    | flat washer 10.5x21        |
| 3  | 2.0112.315.2    | 2    | screw m 10 p.1.5 x 40      |
| 4  | 0.019.7532.0    | 2.29 | flexible hose              |
| 6  | 2.1310.004.2    | 2    | flat washer 8.4x17         |
| 8  | 2.1310.002.2    | 6    | flat washer 6.4x12.5       |
| 9  | 2.0112.011.2    | 1    | screw m 6 p.1x30           |
| 10 | 2.0112.009.2    | 3    | screw m 6 p.1 x 25         |
| 11 | 0.018.5289.3    | 1    | bracket                    |
| 12 | 04419935        | 1    | valve<br>☞ 04419935        |
| 13 | 2.0112.221.2    | 2    | screw m 8 p.1.25 x 60      |
| 15 | 0.019.7532.0    | 1.31 | flexible hose              |
| 17 | 2.1011.105.2    | 2    | nut m 8 p.1.25             |
| 19 | 0.019.7532.0    | 1.75 | flexible hose              |
| 20 | 0.018.8620.3/10 | 1    | tube                       |
| 21 | 0.018.8638.3    | 1    | tube                       |
| 22 | 2.3321.002.0    | 1    | terminal Ø 6.35            |
| 23 | 2.1630.617.2    | 1    | pin 6x50                   |
| 24 | 2.3321.004.0    | 1    | terminal Ø 8/8             |
| 25 | 2.1475.001.7    | 2    | washer 6.4x12              |
| 26 | 2.1011.103.2    | 3    | nut m 6 p.1                |
| 28 | 2.0112.003.2    | 2    | screw m 6 p.1 x 12         |
| 29 | 0.017.1909.0    | 1    | cover                      |
| 30 | 0.018.5286.3    | 1    | bracket                    |
| 31 | 2.0112.007.2    | 2    | screw m 6 p.1 x 20         |
| 32 | 2.0112.311.2    | 6    | screw m 10 p.1.5 x 30      |
| 33 | 0.019.1980.2    | 1    | bracket                    |
| 34 | 2.1310.007.2    | 3    | flat washer 13 x 24        |
| 35 | 2.1011.107.2    | 3    | nut m 12 p.1.75            |
| 36 | 0.017.0166.4    | 1    | filter<br>☞ 0.017.0166.4   |
| 37 | 2.1560.017.0    | 3    | gasket 22.2 x 27           |
| 38 | 0.018.5299.3/20 | 1    | tube                       |
| 39 | 2.3335.009.2    | 2    | pipe union m 22 p.1.5 x 39 |
| 40 | 0.019.7532.0    | 2.19 | flexible hose              |
| 45 | 0.019.5059.2    | 1    | lever                      |
| 46 | 0.019.0145.4/10 | 1    | rod                        |
| 47 | 0.018.8334.3    | 1    | bracket                    |
| 48 | 0.019.2446.2/20 | 1    | support                    |
| 49 | 04414694/10     | 1    | tank                       |

**AIR BRAKING SYSTEM**

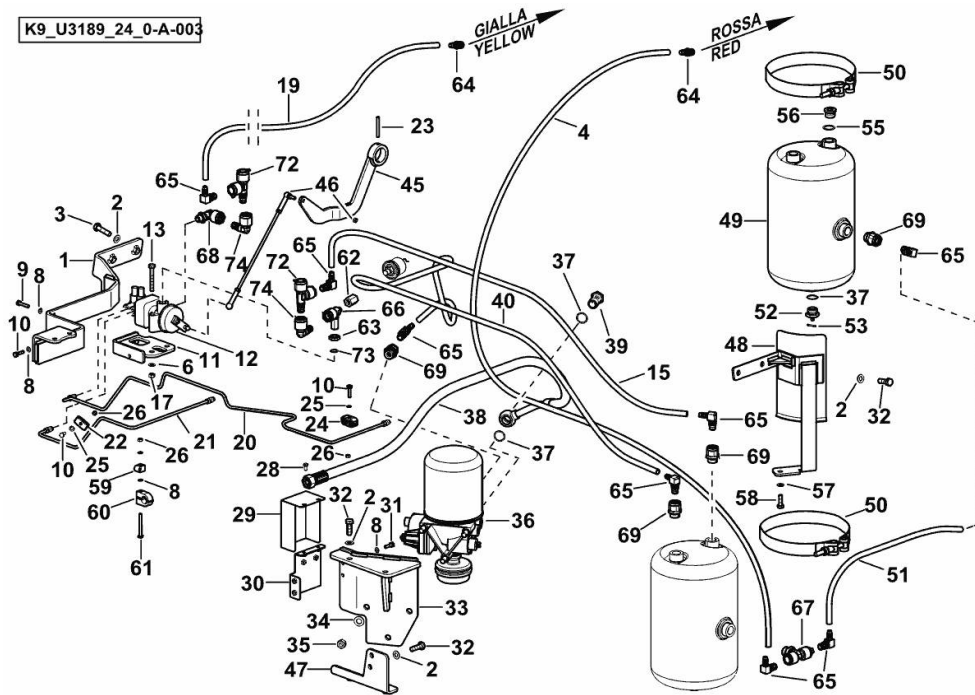
K9\_U3189\_24\_0-A-002



| Fig. | P/n          | QTY  | Name                   |
|------|--------------|------|------------------------|
| 50   | 2.6859.101.0 | 2    | clamp                  |
| 51   | 0.019.7532.0 | 0.56 | flexible hose          |
| 52   | 0.012.3383.0 | 1    | valve                  |
| 53   | 2.1690.306.2 | 1    | split pin 3.2 x 16     |
| 55   | 2.1560.018.0 | 1    | gasket 22.2 x 29       |
| 56   | 2.3120.002.4 | 1    | plug m 22 x 1.5        |
| 57   | 2.1475.202.2 | 1    | spring washer 8.4 x 16 |
| 58   | 2.0112.209.2 | 1    | screw m 8 p 1.25 x 25  |
| 59   | 01141501     | 1    | clamp Ø 6              |
| 60   | 04454609     | 1    | terminal Ø 18          |
| 61   | 2.0112.020.2 | 1    | screw m 6 p.1 x 55     |
| 62   | 04400542     | 1    | pipe fitting           |
| 63   | 2.1019.179.2 | 1    | special nut            |
| 64   | 2.3249.616.0 | 2    | pipe fitting           |
| 65   | 2.3249.619.0 | 8    | connector L            |
| 66   | 2.3249.620.0 | 1    | pipe fitting           |
| 67   | 2.3249.623.0 | 1    | pipe fitting T         |
| 68   | 2.3249.622.0 | 1    | pipe fitting L         |
| 69   | 2.3249.627.0 | 3    | pipe fitting m 22      |
| 70   | 2.3249.664.0 | 1    | pipe fitting m 16      |
| 71   | 2.3249.667.0 | 1    | pipe fitting m 16      |
| 72   | 2.3249.670.0 | 2    | pipe fitting           |

**AIR BRAKING SYSTEM**

K9\_U3189\_24\_0-A-003



| Fig. | P/n | QTY | Name |
|------|-----|-----|------|
|------|-----|-----|------|

**Notes:**

[6180 Agrottron ->WSXU270200LD50001]-> 50051 - 50148 <-

|    |                 |      |                            |
|----|-----------------|------|----------------------------|
| 1  | 0.018.6719.3/10 | 1    | bracket                    |
| 2  | 2.1310.006.2    | 8    | flat washer 10.5x21        |
| 3  | 2.0112.315.2    | 2    | screw m 10 p.1.5 x 40      |
| 4  | 0.019.7532.0    | 2.29 | flexible hose              |
| 6  | 2.1310.004.2    | 2    | flat washer 8.4x17         |
| 8  | 2.1310.002.2    | 6    | flat washer 6.4x12.5       |
| 9  | 2.0112.011.2    | 1    | screw m 6 p.1x30           |
| 10 | 2.0112.009.2    | 3    | screw m 6 p.1 x 25         |
| 11 | 0.018.5289.3    | 1    | bracket                    |
| 12 | 04419935        | 1    | valve<br>☞ 04419935        |
| 13 | 2.0112.221.2    | 2    | screw m 8 p.1.25 x 60      |
| 15 | 0.019.7532.0    | 1.31 | flexible hose              |
| 17 | 2.1011.105.2    | 2    | nut m 8 p.1.25             |
| 19 | 0.019.7532.0    | 1.75 | flexible hose              |
| 20 | 0.018.8620.3/10 | 1    | tube                       |
| 21 | 0.018.8638.3    | 1    | tube                       |
| 22 | 2.3321.002.0    | 1    | terminal Ø 6.35            |
| 23 | 2.1630.617.2    | 1    | pin 6x50                   |
| 24 | 2.3321.004.0    | 1    | terminal Ø 8/8             |
| 25 | 2.1475.001.7    | 2    | washer 6.4x12              |
| 26 | 2.1011.103.2    | 3    | nut m 6 p.1                |
| 28 | 2.0112.003.2    | 2    | screw m 6 p.1 x 12         |
| 29 | 0.017.1909.0    | 1    | cover                      |
| 30 | 0.018.5286.3    | 1    | bracket                    |
| 31 | 2.0112.007.2    | 2    | screw m 6 p.1 x 20         |
| 32 | 2.0112.311.2    | 6    | screw m 10 p.1.5 x 30      |
| 33 | 0.019.1980.2    | 1    | bracket                    |
| 34 | 2.1310.007.2    | 3    | flat washer 13 x 24        |
| 35 | 2.1011.107.2    | 3    | nut m 12 p.1.75            |
| 36 | 0.017.0166.4    | 1    | filter<br>☞ 0.017.0166.4   |
| 37 | 2.1560.017.0    | 3    | gasket 22.2 x 27           |
| 38 | 0.018.5299.3/20 | 1    | tube                       |
| 39 | 2.3335.009.2    | 2    | pipe union m 22 p.1.5 x 39 |
| 40 | 0.019.7532.0    | 2.19 | flexible hose              |
| 45 | 0.019.5059.2    | 1    | lever                      |
| 46 | 0.019.0145.4/20 | 1    | rod                        |
| 47 | 0.018.8334.3    | 1    | bracket                    |
| 48 | 0.019.2446.2/20 | 1    | support                    |
| 49 | 04414694/10     | 1    | tank                       |

**Buy Now**



Our support email:

[ebooklibonline@outlook.com](mailto:ebooklibonline@outlook.com)