

Section: ENGINE
CRANKCASE

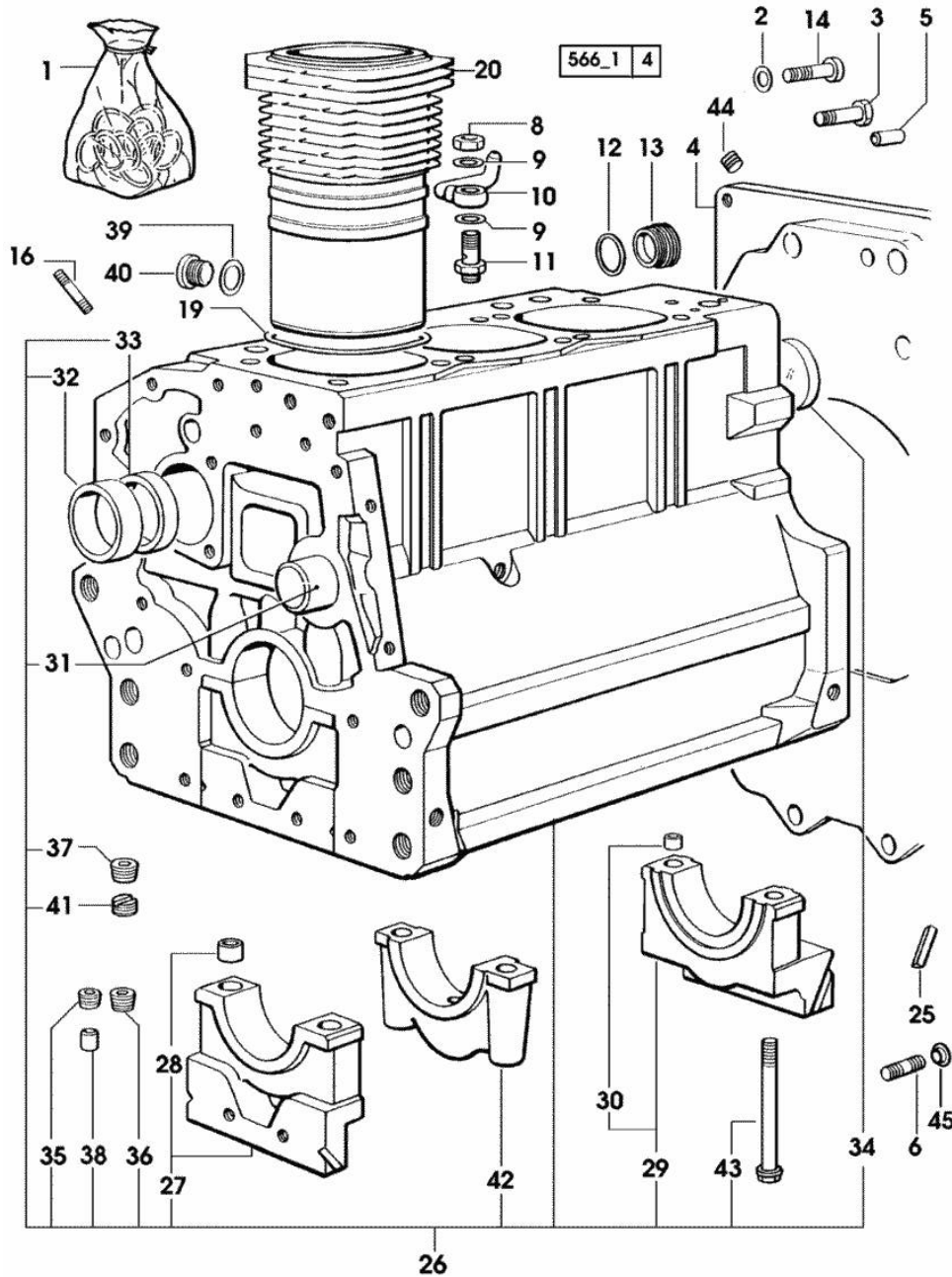


Fig.	P/n	QTY	Name
Notes: [660-F PLUS]			
1	0.085.0050.6/10	1	gasket set - FOR ENGINE MOUNTING
2	2.1480.018.1	2	washer 14
3	2.0112.511.1	8	screw m 14 p.2 x 30
4	0.007.1414.0/10	1	flange * (...) <- N.1 2.3131.003.2
5	2.1651.912.0	2	cylindrical plug 12x28
6	2.0432.255.7	1	stud bolt m 12 p.1.75-1.25x25
6	2.0439.250.7	1	stud bolt m 12 / m 10 x 30
8	2.1099.108.2	3	special nut m 10 p.1
9	2.1560.006.0	6	gasket 10.2 x 16
10	0.086.1550.2	3	sprayer nozzle
11	0.065.1160.3/20	3	valve
12	2.1532.072.0	1	oil seal 26.70x1.78
13	2.3199.405.2	1	plug m 28 p.1.5
14	2.0312.516.1	2	screw m 14 p.2x50
16	2.0432.003.7	9	stud bolt m 8 p.1.25 / p.1 x 20
19	2.1539.130.0/10	3	special oil seal 117.07x3.53
20	0.007.0762.0/50	3	engine cylinder
20	0.A13.0355.0	3	engine cylinder "A" => 29792
20	0.B13.0355.0	3	engine cylinder "B" => 29792
25	0.066.1152.0/10	4	gasket
26	0.007.1150.6/10	1	crankcase * 17401 <= - N.1 - 085.1750.2/10 - 009.7871.0
27	0.065.1112.7	1	support
28	2.1699.165.0	1	bush 12.3x15x16
29	0.065.1116.3	1	support
30	2.1699.165.0	1	bush 12.3x15x16
31	0.066.1151.0	1	pin
32	0.065.1141.0	1	special bushing 59X55X30
33	0.065.1140.0	3	special bushing 59X55X20
34	2.3179.012.0	1	plug 60
35	2.3130.001.1	9	plug 1/8" gas
36	2.3130.002.1	2	plug 1/4" gas
37	2.3130.003.1	7	plug 3/8" gas
38	2.3199.092.0	3	plug 8 x 12

CRANKCASE

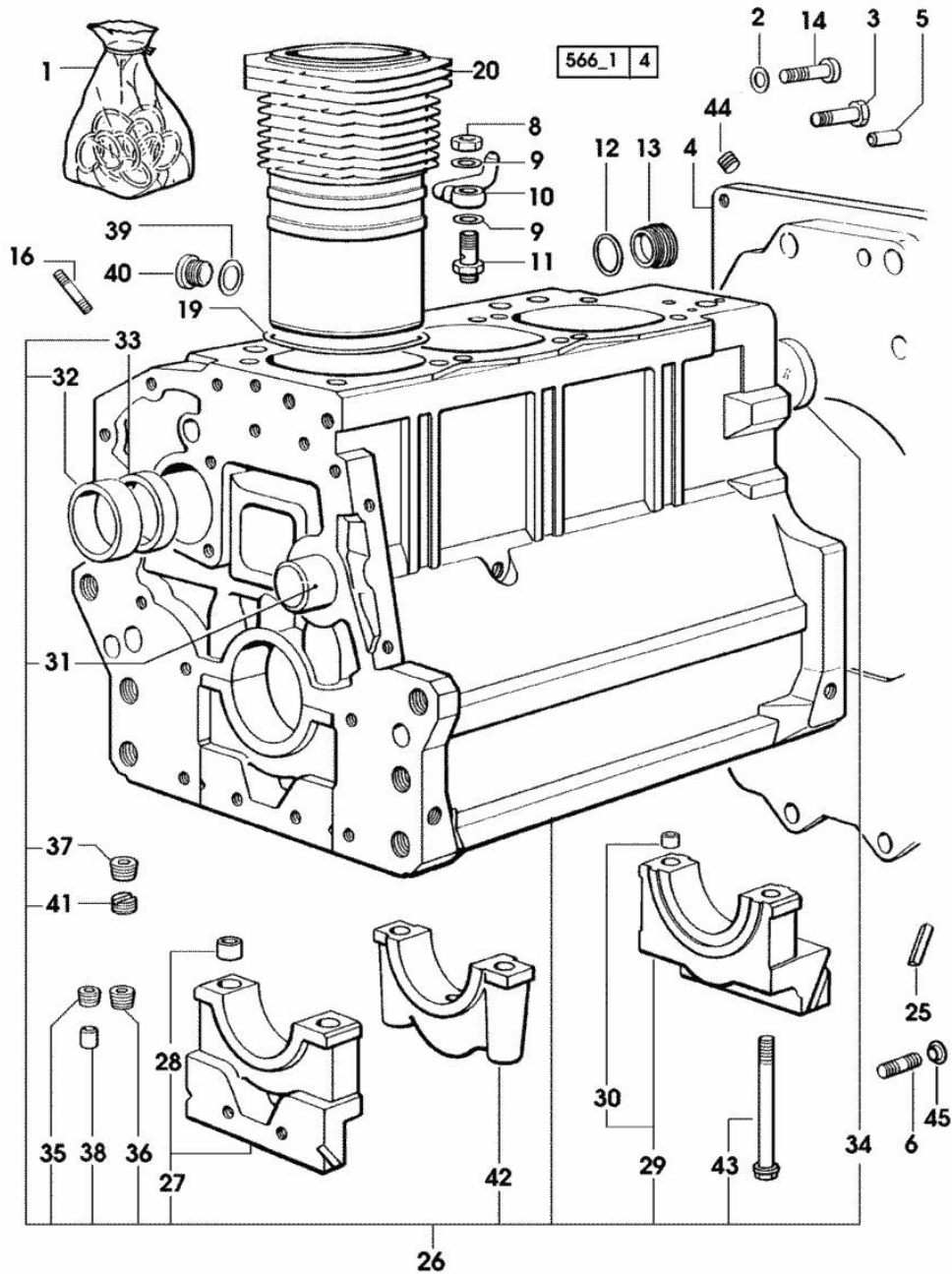


Fig.	P/n	QTY	Name
39	2.1560.017.0	1	gasket 22.2 x 27 17401 <=
40	2.3120.002.4	1	plug m 22 x 1.5 17401 <=
41	2.1324.011.0	1	plug
42	0.065.1114.0/10	2	support
43	0.065.1117.0	8	screw m 12 x 100
44	2.3131.003.2	1	plug m 16 p.1.5
45	0.011.9294.0/10	1	bush

Section: ENGINE

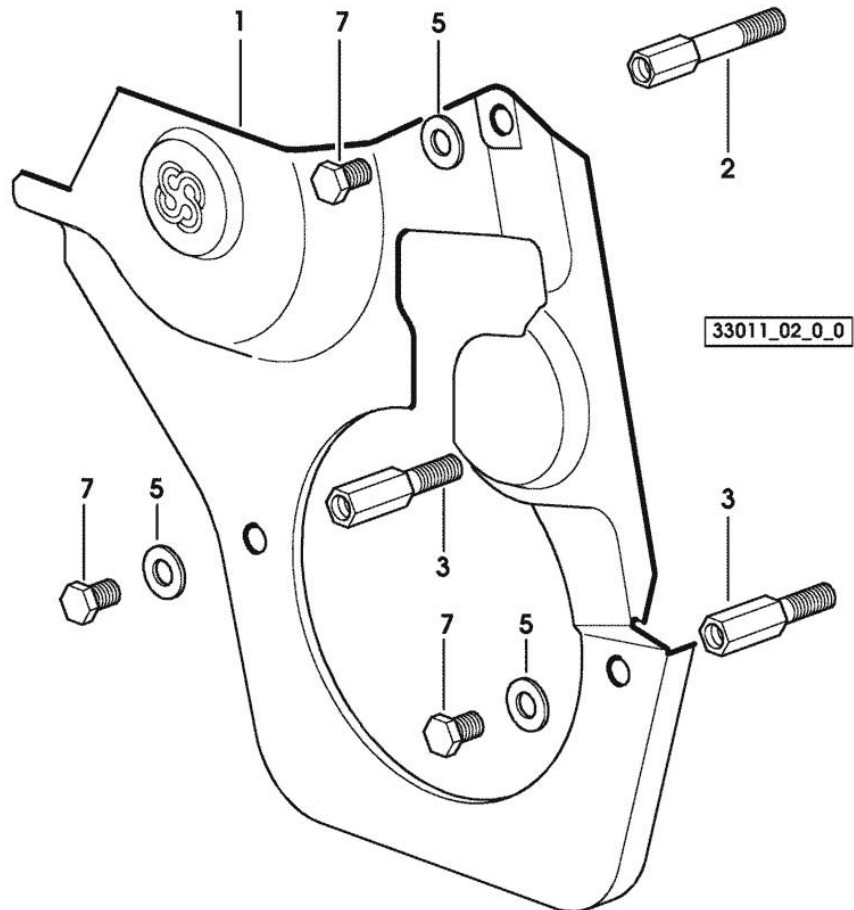
TIMING CASE

Fig.	P/n	QTY	Name
------	-----	-----	------

Notes:

[660-F PLUS]

1	0.007.1262.3/50	1	guard
2	0.007.1271.0/10	1	small column m 8 p.1.25 / L = mm 60
3	0.007.1272.0/10	2	small column m 8 p.1.25 / L = mm 50
5	2.1310.004.2	3	flat washer 8.4x17
7	2.0112.205.2	3	screw m 8 p.1.25 x 16



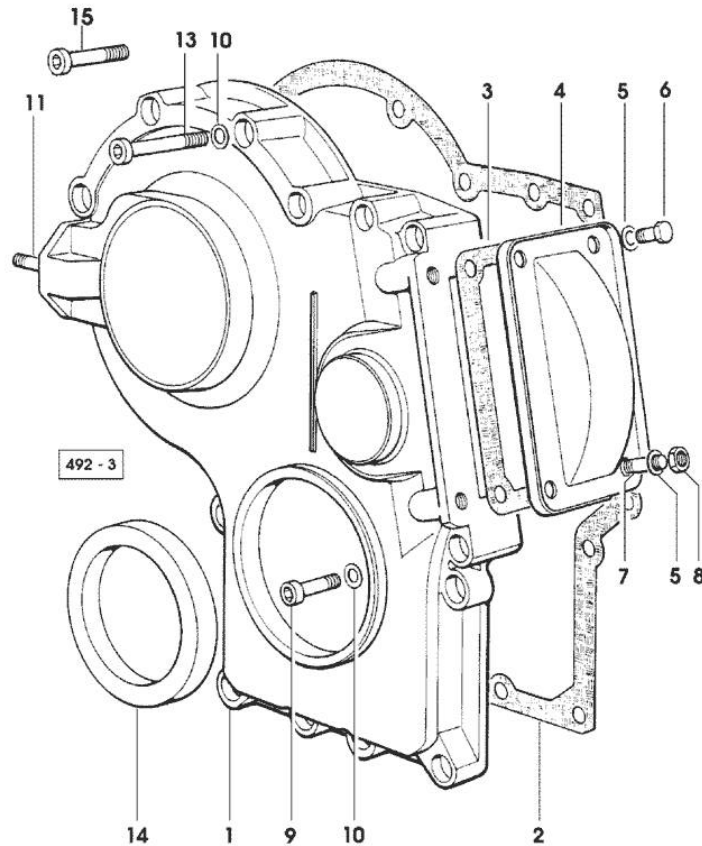
Section: ENGINE

TIMING CASE

Fig.	P/n	QTY	Name
------	-----	-----	------

Notes:

[660-F PLUS]



1	0.065.1132.0/60	1	guard
2	0.065.1150.0/30	1	gasket
3	0.065.1152.0	1	gasket - X 880-F 990-F PLUS
4	0.065.1151.0	1	cover - X 880-F 990-F PLUS
5	2.1470.004.2	4	lock washer 8
6	2.0112.205.2	2	screw m 8 p.1.25 x 16
7	2.0432.005.7	2	stud bolt m 8 p.1.5 / p.1 x 25
8	2.1011.405.2	2	nut m 8 p.1
9	2.0312.208.2	8	screw m 8 p.1.25 x 25
10	2.1480.014.1	15	washer 8
11	2.0432.003.7	2	stud bolt m 8 p.1.25 / p.1 x 20
13	2.0312.214.2	7	screw m 8 p.1.25 x 40 - X 775-F 880-F 990-F PLUS
13	2.0312.219.2	4	screw m 8 p.1.25x65 - X 660-F PLUS
14	2.1529.141.0	1	special oil seal
15	2.0312.214.1	3	screw m 8 p.1.25 x 40 - X 660-F PLUS

Section: ENGINE

CRANKSHAFT

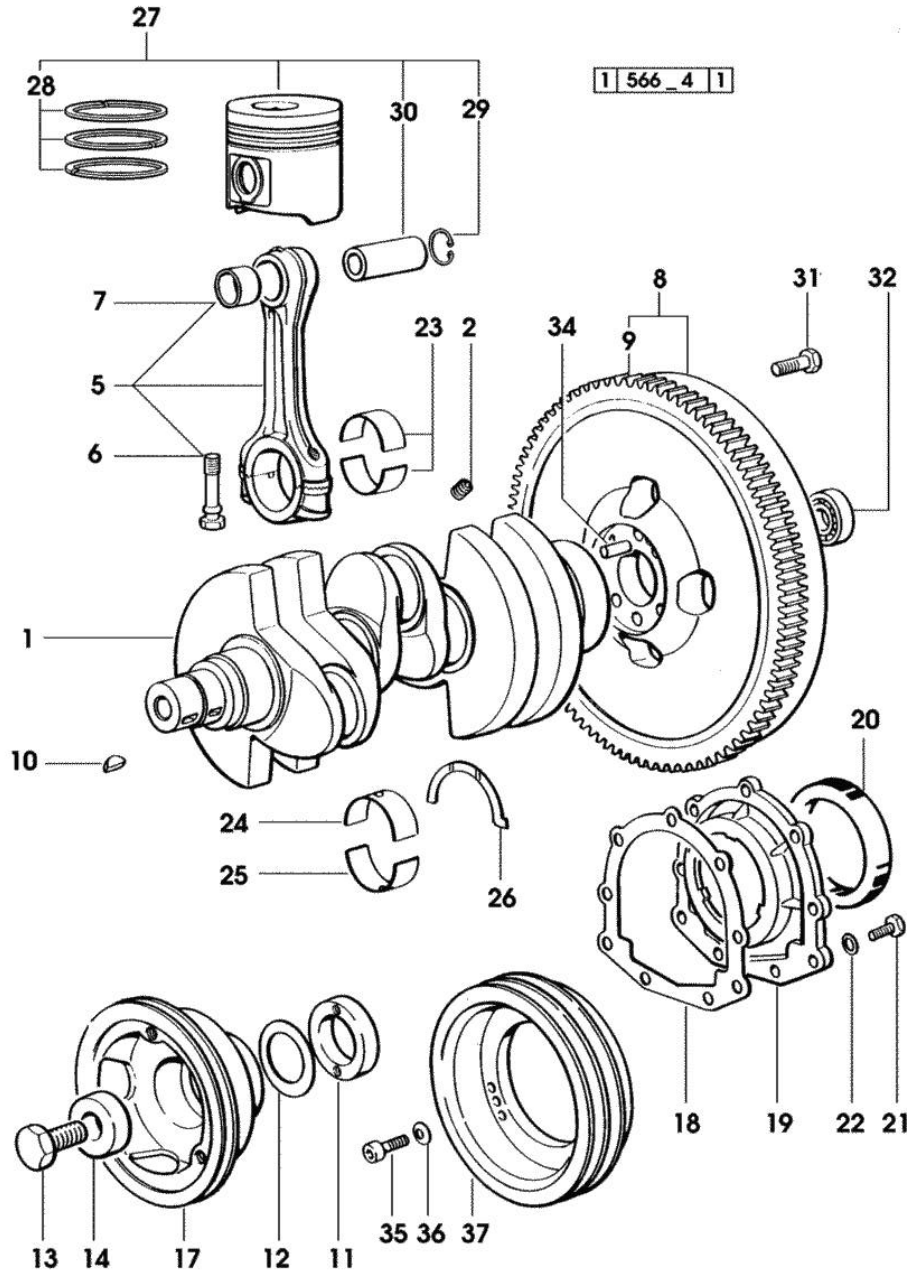


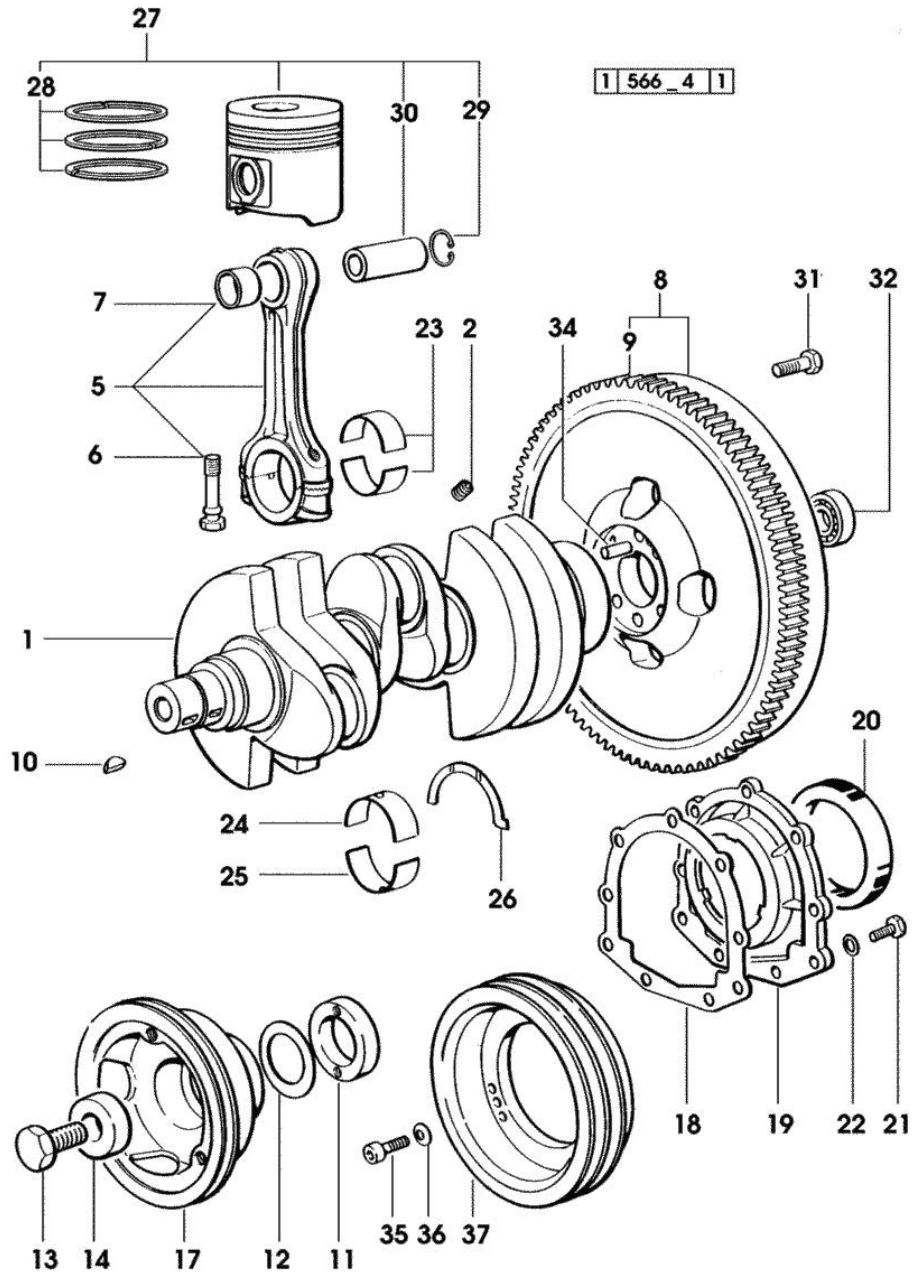
Fig.	P/n	QTY	Name
Notes:			
[660-F PLUS]			
1	0.007.1554.0/20	1	crankshaft * 14257 <=
			- N.1 - 007.1711.0/10
2	2.3130.001.1	3	plug 1/8" gas
5	0.078.1220.3/30	3	engine connecting rod
6	2.0399.213.0	6	screw m 12 p.1.25x61.5
7	2.1559.114.0/10	3	special bushing
8	0.330.1247.3/10	1	flywheel
9	0.069.1242.0	1	crown wheel Z = 121
10	2.1720.006.0	2	key 4x6.5
11	0.085.1248.0/10	1	hub
12	2.1589.189.0	3	shoulder ring mm 1.00
13	2.0399.144.7/10	1	screw m 20 p.1.5x51
14	2.1599.524.7	1	washer 21x60x12
17	0.007.1330.0/30	1	pulley * 12734 <=
			- N.1 - 2.1720.006.0
18	0.065.1254.0/20	1	gasket
19	0.007.1711.0/10	1	cover
			=> 14258
19	0.065.1253.0/10	1	cover
			14257 <=
20	2.1529.073.0	1	special oil seal 110x130x13
21	2.0112.207.2	9	screw m 8 p 1.25 x 20
22	2.1475.002.2	9	conical washer 8
23	0.065.1225.0	6	con.rod half bushing STANDARD - A = 28.75 -> 29.00
23	0.065.1225.7		con.rod half bushing - mm 0.25
23	0.065.1225.8		con.rod half bushing - mm 0.50
24	0.065.1215.0	4	main half bushing STANDARD
24	0.065.1215.7		main half bushing - mm 0.25
24	0.065.1215.8		main half bushing - mm 0.50
25	0.065.1216.0	4	main half bushing
25	0.065.1216.7		main half bushing - mm 0.25
25	0.065.1216.8		main half bushing - mm 0.50
26	0.065.1218.0	4	shim STANDARD
26	0.065.1218.7		shim + mm 0.10
26	0.065.1218.8		shim + mm 0.15
27	0.086.0060.6/30	3	complete piston 29791 <=
27	0.379.0060.6	3	complete piston 29791 <= X EXPORT U.S.A.

Section: ENGINE

CRANKSHAFT

Fig.	P/n	QTY	Name
27	0.379.0060.A	3	complete piston "A" => 29792
27	0.379.0060.B	3	complete piston "B" => 29792
28	0.086.0052.6/10	3	piston ring set
29	2.1411.014.1	6	circlip 35
30	0.078.1236.0	3	piston pin Ø 18 / Ø 35 / L = mm 86
31	0.330.1250.0	6	screw m 12 p.1.25x98
32	2.2041.008.0	1	ball bearing 20x47x14
34	2.1652.915.0	1	cylindrical plug 12x35
35	2.0312.308.1	3	screw m 10 p.1.5 x 25
36	2.1480.015.1	3	washer 10
37	0.086.1251.0	1	pulley

- ADDITIONAL PULLEY FOR ACCESSORIES

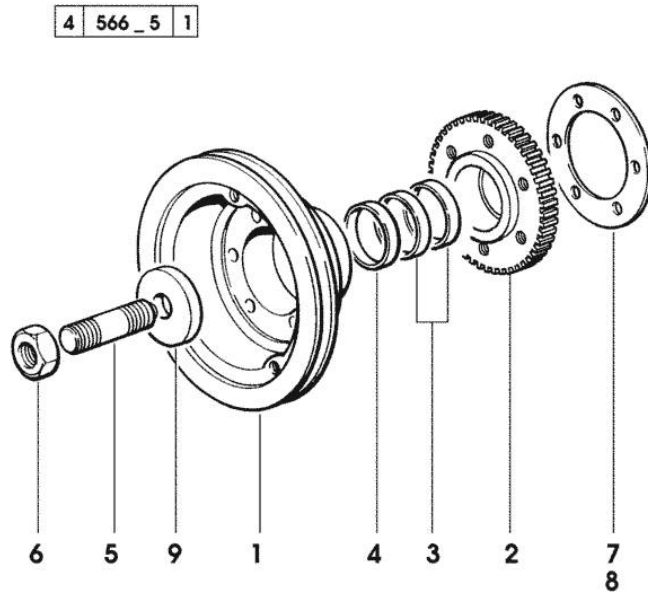


ENGINE SHAFT - FRONT P.T.O. PULLEYS

Fig.	P/n	QTY	Name
------	-----	-----	------

Notes:

[660-F PLUS]



1	0.086.1244.0	1	pulley
2	0.011.3515.0/10	1	hub Z = 48
3	0.065.1256.0	2	ring 45x52
4	2.1579.865.0	1	spacer 45.2x51.8x10
5	2.0439.195.7	1	stud bolt m 20 p.1.5x80
6	2.1019.094.7	1	nut m 20 p.1.5
7	2.1589.137.0	3	shoulder ring 71x110x1
8	2.1589.136.0	1	shoulder ring 71x110x0.5
9	2.1599.524.7	1	washer 21x60x12

Buy Now



Our support email:

ebooklibonline@outlook.com