

Section: ENGINE

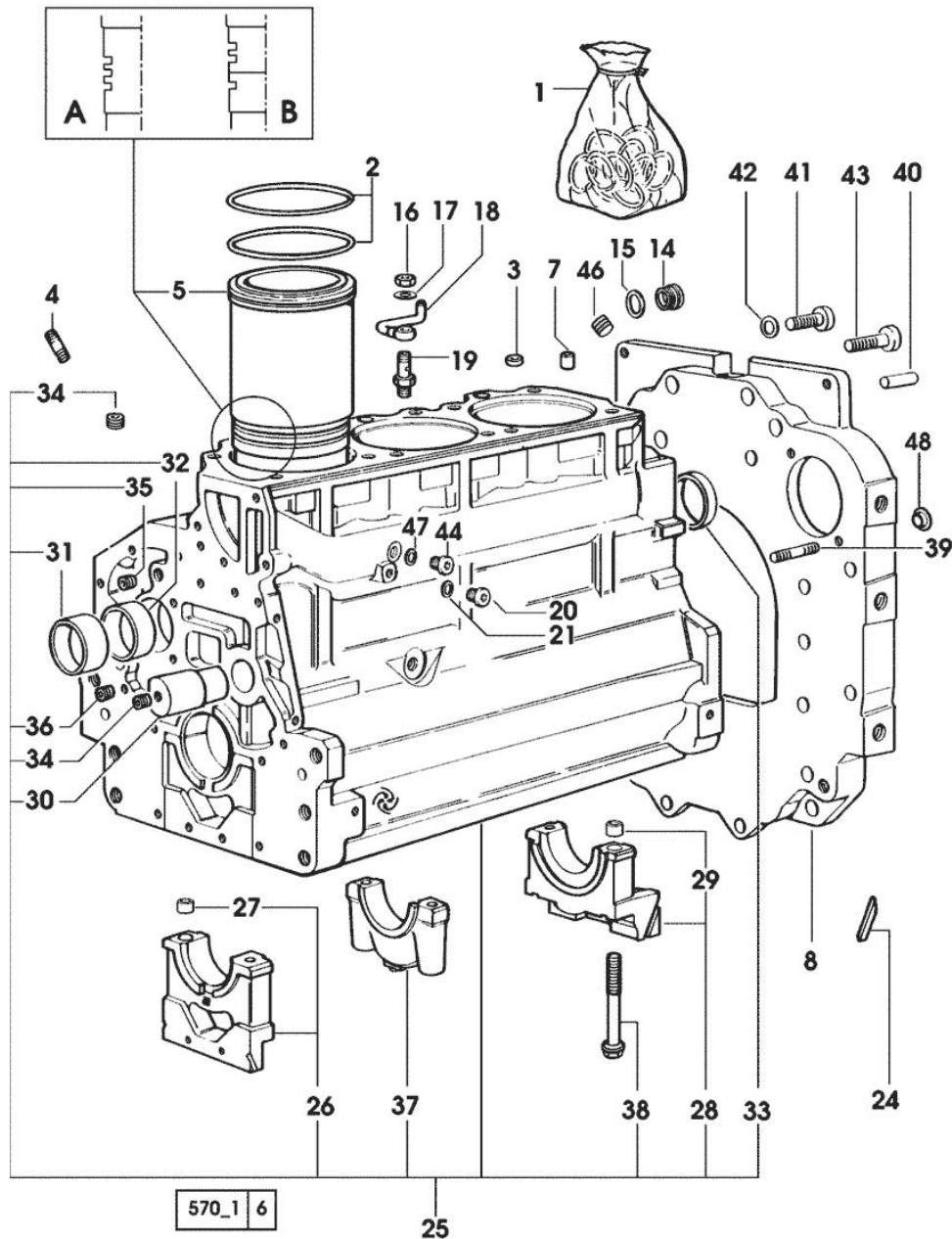
CRANKCASE

Fig.	P/n	QTY	Name
Notes:			
[775-F PLUS]			
1	0.070.0050.6	1	gasket set - FOR ENGINE MOUNTING
2	2.1519.096.0/20	9	special oil seal 107.67x1.78 2059 <=
2	2.1539.193.0	6	special oil seal 107.62x2.62 => 2060
3	2.1559.188.2	3	bush 11.4 x 14 x 16
4	2.0432.003.7	9	stud bolt m 8 p.1.25 / p.1 x 20
5	0.009.7500.0/10	3	engine cylinder 1465 <= = A
5	0.011.0582.0	3	engine cylinder = B => 1466 - 2059 <=
5	0.A12.2675.0	3	engine cylinder "A" => 2060
5	0.B12.2675.0	3	engine cylinder "B" => 2060
7	2.1549.154.2	3	bush 4.8x5.8x16
8	0.007.1414.0/10	1	flange * (...) <- N.1 2.3131.003.2
14	2.3199.405.2	1	plug m 28 p.1.5
15	2.1532.072.0	1	oil seal 26.70x1.78
16	2.1099.108.2	3	special nut m 10 p.1
17	2.1560.006.0	6	gasket 10.2 x 16
18	0.086.1550.2	3	sprayer nozzle
19	0.065.1160.3/20	3	valve
20	2.3199.292.0	1	plug 1/4" gas
21	2.1560.010.0	1	gasket 14.2 x 20
24	0.066.1152.0/10	4	gasket
25	0.070.1110.6/20	1	crankcase * 2059 <= - N.3 011.0183.0/10 - N.6 2.1539.193.0
26	0.065.1112.7	1	support
27	2.1699.165.0	1	bush 12.3x15x16
28	0.065.1116.3	1	support
29	2.1699.165.0	1	bush 12.3x15x16
30	0.066.1151.0	1	pin
31	0.065.1141.0	1	special bushing 59X55X30
32	0.065.1140.0	3	special bushing 59X55X20
33	2.3179.012.0	1	plug 60

Section: ENGINE
CRANKCASE

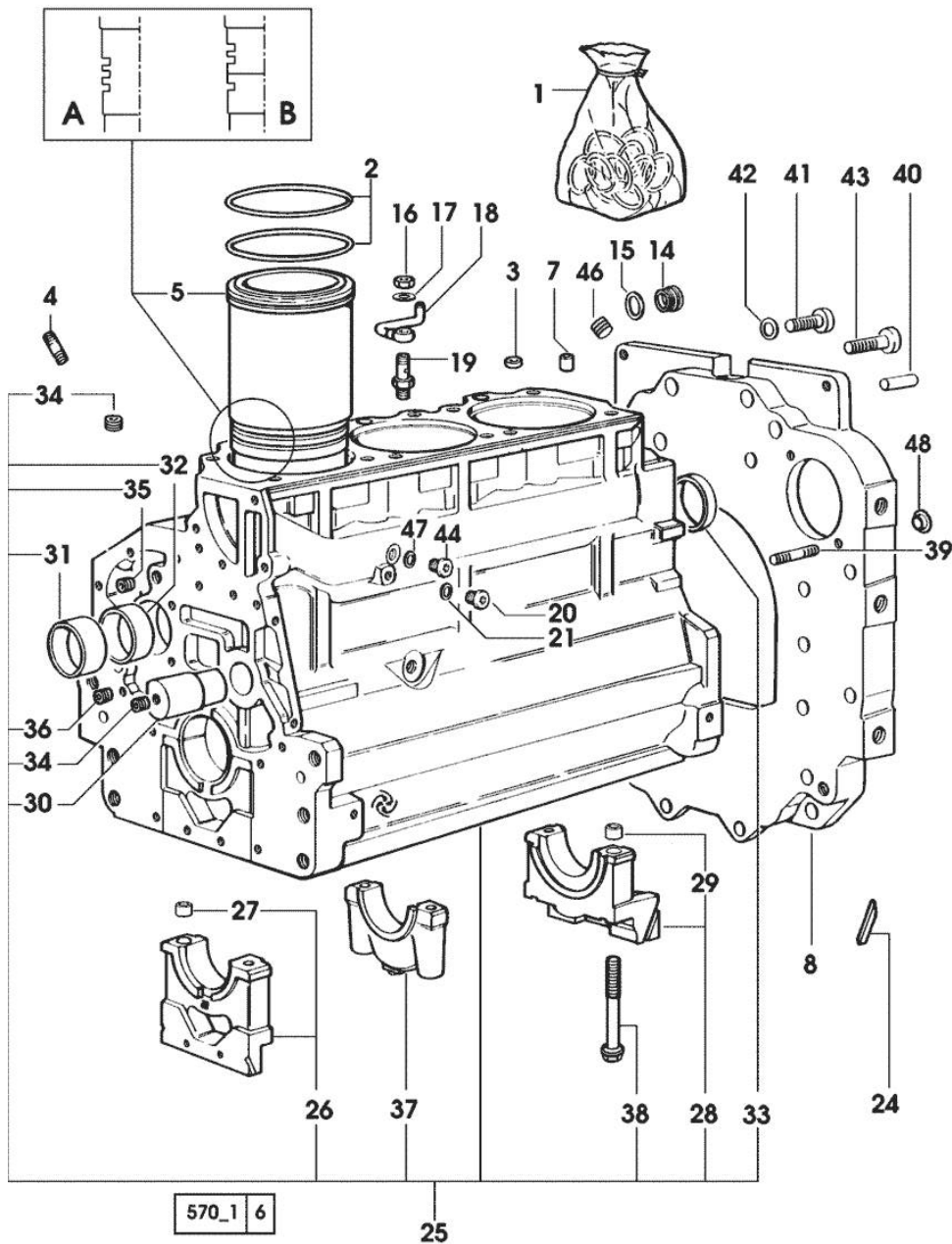


Fig.	P/n	QTY	Name
34	2.3130.001.1	9	plug 1/8" gas
35	2.3130.002.1	2	plug 1/4" gas
36	2.3130.003.1	2	plug 3/8" gas
37	0.065.1114.0/10	2	support
38	0.065.1117.0	8	screw m 12 x 100
39	2.0432.255.7	1	stud bolt m 12 p.1.75-1.25x25
39	2.0439.250.7	1	stud bolt m 12 / m 10 x 30
40	2.1651.912.0	2	cylindrical plug 12x28
41	2.0312.516.1	2	screw m 14 p.2x50
42	2.1480.018.1	2	washer 14
43	2.0112.511.1	8	screw m 14 p.2 x 30
44	2.3120.101.0	1	plug m 18 p.1.5 => 2060
46	2.3131.003.2	1	plug m 16 p.1.5
47	2.1560.014.0	1	washer 18.2 x 24
48	0.011.9294.0/10	1	bush

Section: ENGINE

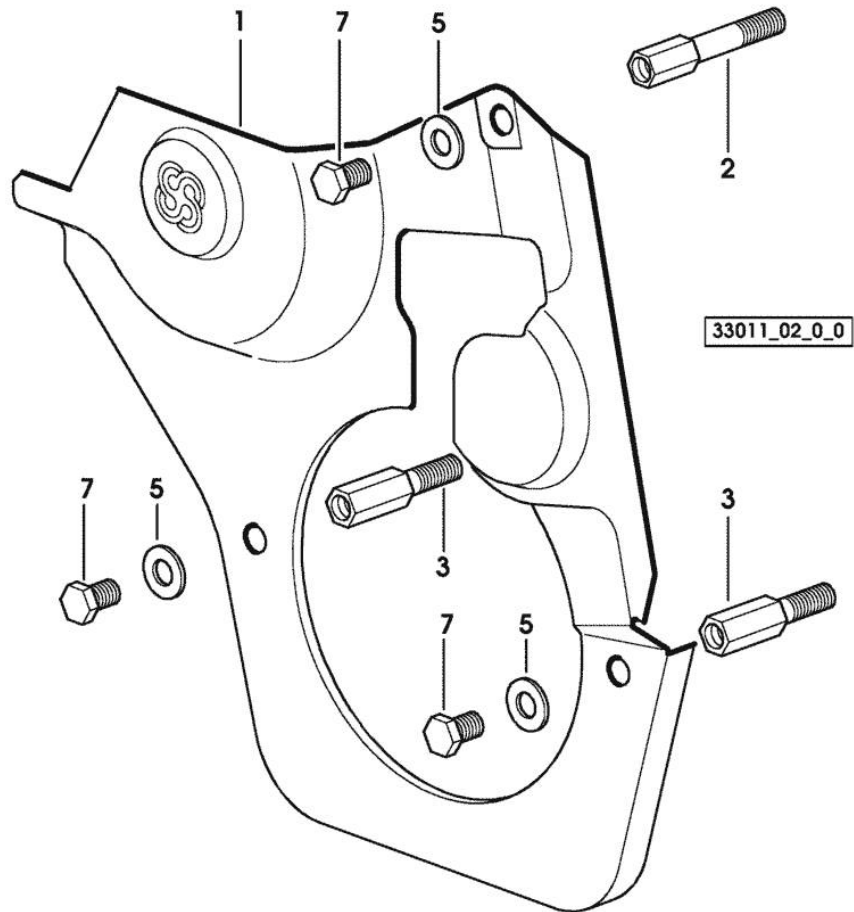
TIMING CASE

Fig.	P/n	QTY	Name
------	-----	-----	------

Notes:

[775-F PLUS]

1	0.007.1262.3/50	1	guard
2	0.007.1271.0/10	1	small column m 8 p.1.25 / L = mm 60
3	0.007.1272.0/10	2	small column m 8 p.1.25 / L = mm 50
5	2.1310.004.2	3	flat washer 8.4x17
7	2.0112.205.2	3	screw m 8 p.1.25 x 16



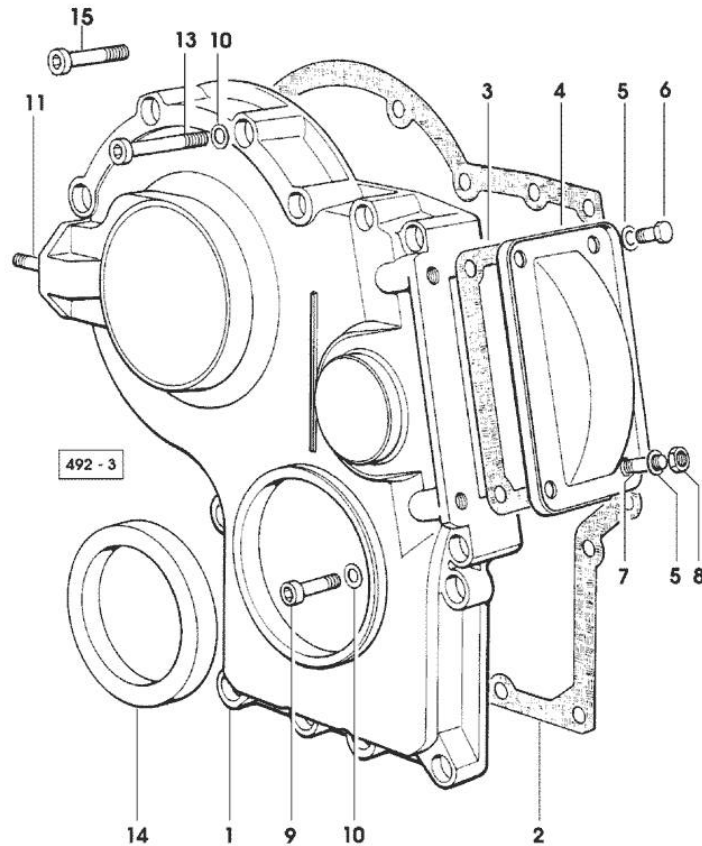
Section: ENGINE

TIMING CASE

Fig.	P/n	QTY	Name
------	-----	-----	------

Notes:

[775-F PLUS]



1	0.065.1132.0/60	1	guard
2	0.065.1150.0/30	1	gasket
3	0.065.1152.0	1	gasket - X 880-F 990-F PLUS
4	0.065.1151.0	1	cover - X 880-F 990-F PLUS
5	2.1470.004.2	4	lock washer 8
6	2.0112.205.2	2	screw m 8 p.1.25 x 16
7	2.0432.005.7	2	stud bolt m 8 p.1.5 / p.1 x 25
8	2.1011.405.2	2	nut m 8 p.1
9	2.0312.208.2	8	screw m 8 p.1.25 x 25
10	2.1480.014.1	15	washer 8
11	2.0432.003.7	2	stud bolt m 8 p.1.25 / p.1 x 20
13	2.0312.214.2	7	screw m 8 p.1.25 x 40 - X 775-F 880-F 990-F PLUS
13	2.0312.219.2	4	screw m 8 p.1.25x65 - X 660-F PLUS
14	2.1529.141.0	1	special oil seal
15	2.0312.214.1	3	screw m 8 p.1.25 x 40 - X 660-F PLUS

Section: ENGINE

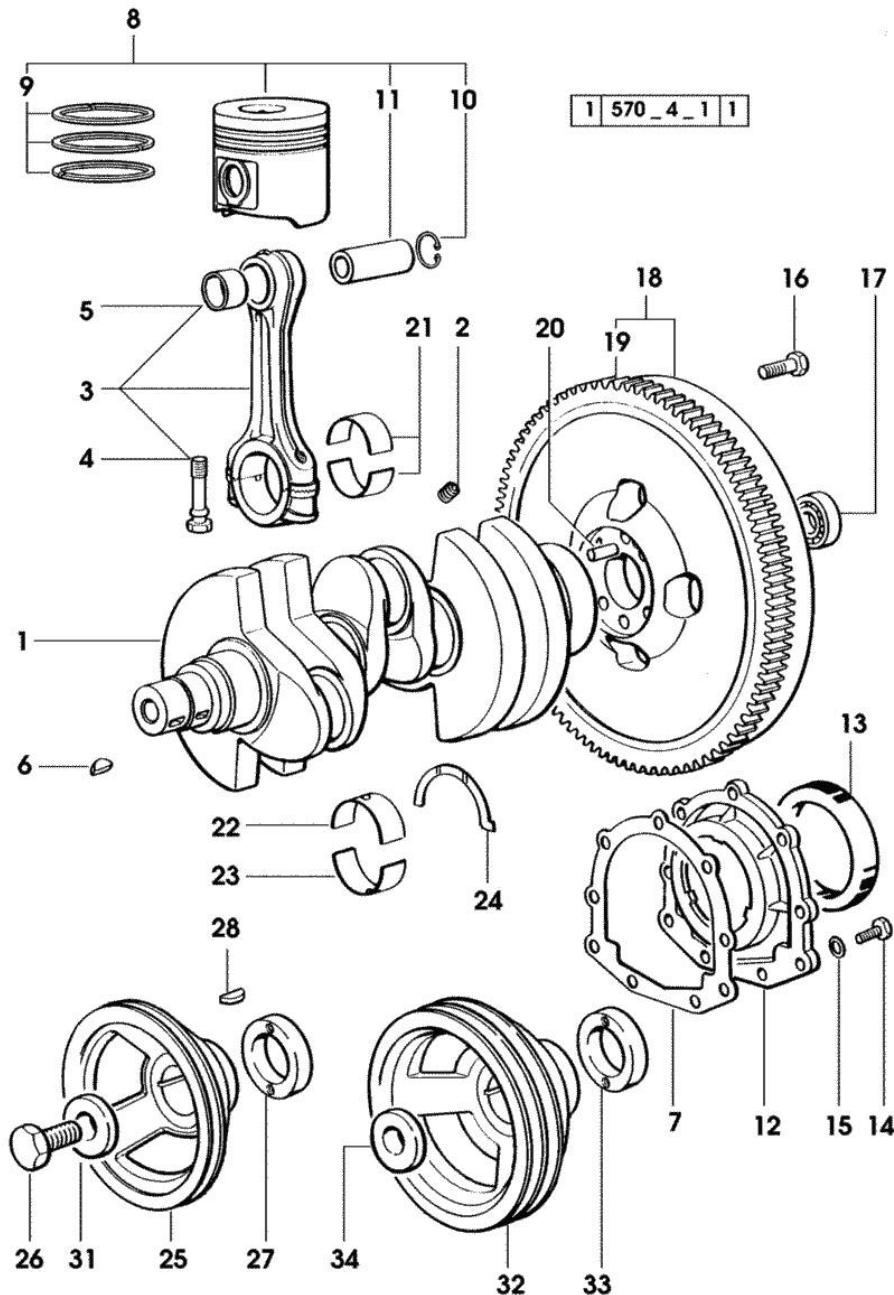
CRANKSHAFT

Fig.	P/n	QTY	Name
Notes:			
[775-F PLUS]			
1	0.007.1554.0/20	1	crankshaft * 1410 <= - N.1 - 007.1711.0
2	2.3130.001.1	3	plug 1/8" gas
3	0.078.1220.3/30	3	engine connecting rod
4	2.0399.213.0	2	screw m 12 p.1.25x61.5
5	2.1559.114.0/10	1	special bushing
6	2.1720.006.0	2	key 4x6.5
7	0.065.1254.0/20	1	gasket
8	0.338.0060.6/20	3	complete piston 2348 <=
8	0.381.0060.6	3	complete piston 2348 <= EXPORT U.S.A.
8	0.381.0060.A	3	complete piston "A" => 2349
8	0.381.0060.B	3	complete piston "B" => 2349
9	0.338.0052.6/10	1	piston ring set
10	2.1411.014.1	6	circlip 35
11	0.078.1236.0	3	piston pin Ø 18 / Ø 35 / L = mm 86
12	0.007.1711.0/10	1	cover => 1411
12	0.065.1253.0/10	1	cover 1410 <=
13	2.1529.073.0	1	special oil seal 110x130x13
14	2.0112.207.2	9	screw m 8 p 1.25 x 20
15	2.1475.002.2	9	conical washer 8
16	0.330.1250.0	6	screw m 12 p.1.25x98
17	2.2041.008.0	1	ball bearing 20x47x14
18	0.330.1247.3/10	1	flywheel
19	0.069.1242.0	1	crown wheel Z = 121
20	2.1652.915.0	1	cylindrical plug 12x35
21	0.065.1225.0	6	con.rod half bushing STANDARD - A = 28.75 -> 29.00
21	0.065.1225.7		con.rod half bushing - mm 0.25
21	0.065.1225.8		con.rod half bushing - mm 0.50
22	0.065.1215.0	4	main half bushing STANDARD
22	0.065.1215.7		main half bushing - mm 0.25
22	0.065.1215.8		main half bushing - mm 0.50
23	0.065.1216.0	4	main half bushing
23	0.065.1216.7		main half bushing - mm 0.25
23	0.065.1216.8		main half bushing - mm 0.50

Section: ENGINE

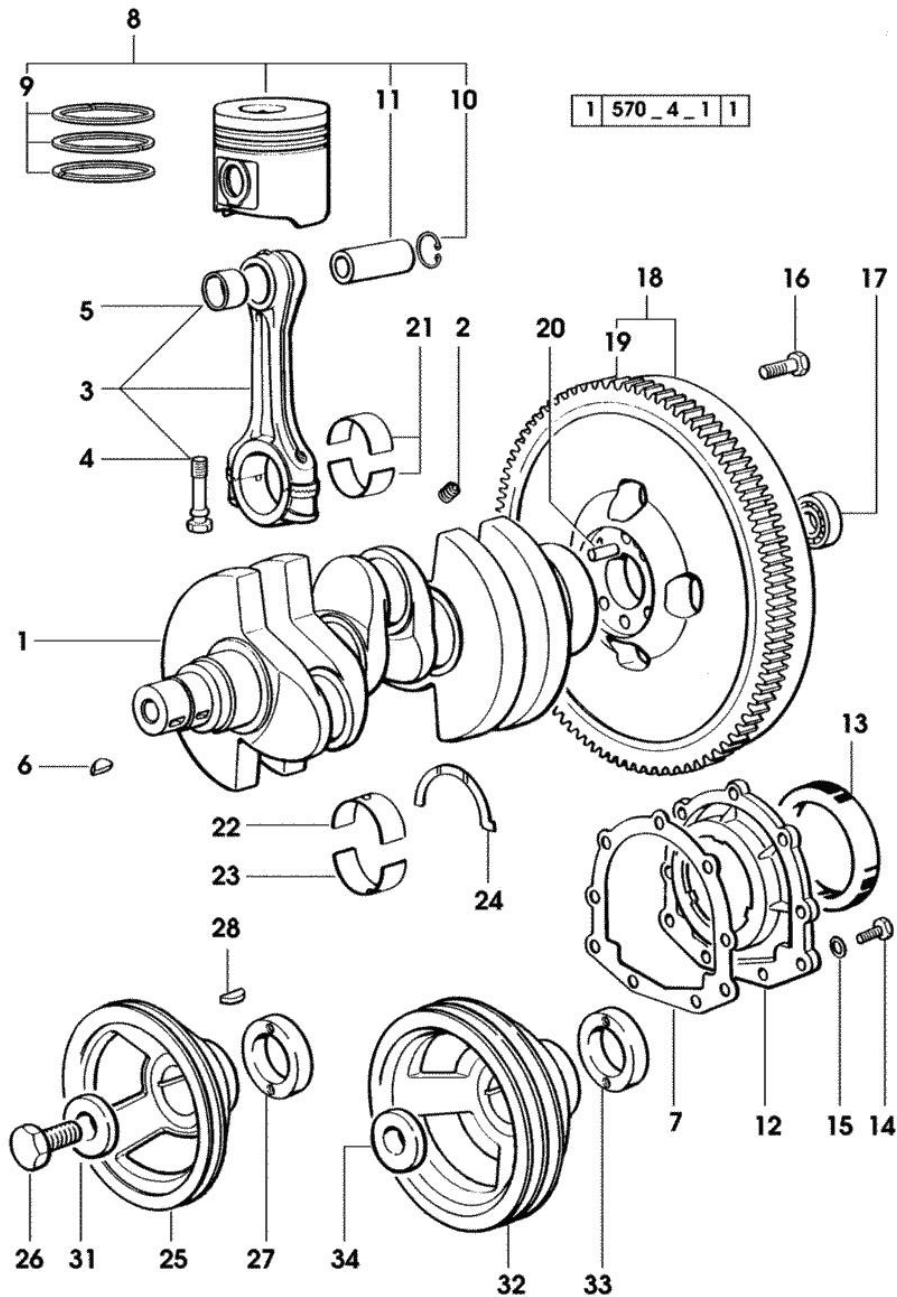
CRANKSHAFT

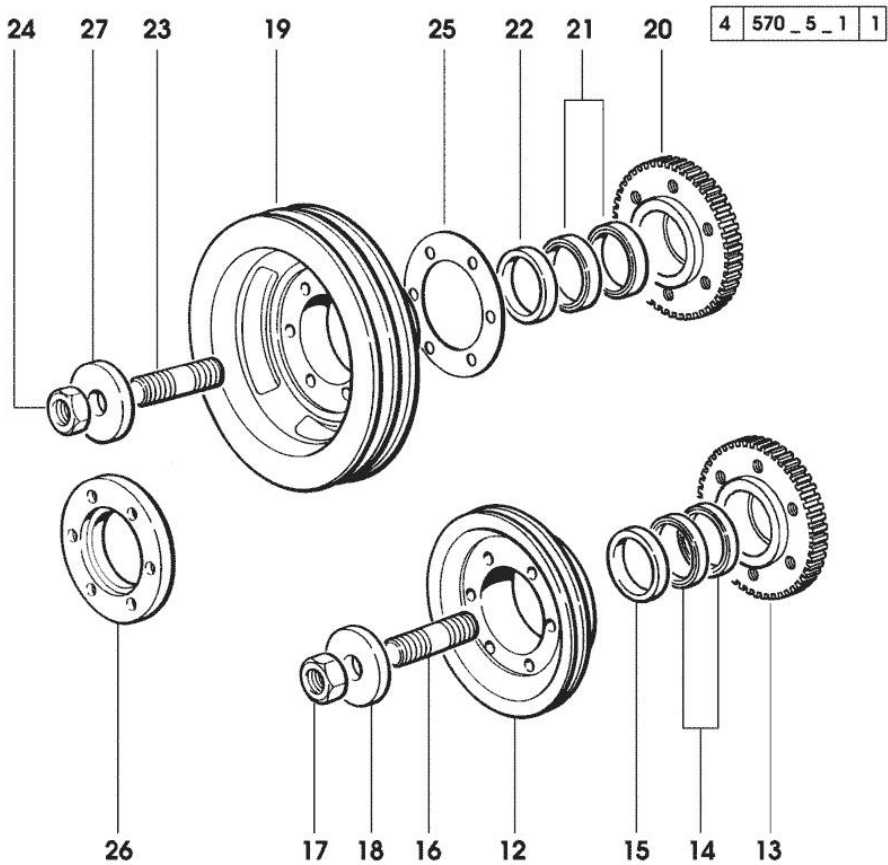
Fig.	P/n	QTY	Name
24	0.065.1218.0	4	shim STANDARD
24	0.065.1218.7		shim + mm 0.10
24	0.065.1218.8		shim + mm 0.15
25	0.007.1457.0/20	1	pulley * 1142 <=
			- N.1 - 2.1720.006.0
26	2.0399.144.7/10	1	screw m 20 p.1.5x51
27	0.085.1248.0/10	1	hub
28	2.1720.006.0	1	key 4x6.5
31	2.1599.524.7	1	washer 21x60x12
32	0.007.1458.0/30	1	pulley * 1142 <=
			- N.1 - 2.1720.006.0
			- FOR TRACTORS WITH AIR CONDITIONING
33	0.085.1248.0/10	1	hub
34	2.1599.524.7	1	washer 21x60x12

Section: ENGINE

ENGINE SHAFT - FRONT P.T.O. PULLEYS

Fig.	P/n	QTY	Name
------	-----	-----	------

Notes:
[775-F PLUS]



12	0.082.1244.0/10	1	pulley
13	0.011.3515.0/10	1	hub Z = 48
14	0.065.1256.0	2	ring 45x52
15	2.1579.865.0	4	spacer 45.2x51.8x10
16	2.0439.195.7	1	stud bolt m 20 p.1.5x80
17	2.1019.094.7	1	nut m 20 p.1.5
18	2.1599.524.7	1	washer 21x60x12
19	0.082.1250.0/10	1	pulley
- FOR TRACTORS WITH AIR CONDITIONING			
20	0.011.3515.0/10	1	hub Z = 48
21	0.065.1256.0	2	ring 45x52
22	2.1579.865.0	1	spacer 45.2x51.8x10
23	2.0439.195.7	1	stud bolt m 20 p.1.5x80
24	2.1019.094.7	1	nut m 20 p.1.5
25	2.1589.137.0	3	shoulder ring 71x110x1
26	0.089.1253.0/10	1	spacer
27	2.1599.524.7	1	washer 21x60x12

Buy Now



Our support email:

ebooklibonline@outlook.com