

MT52

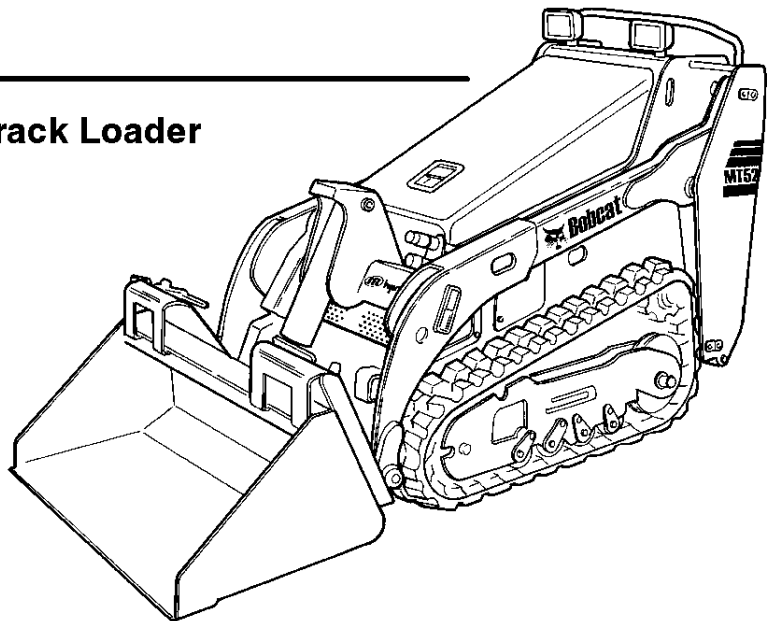


Bobcat®

Parts Manual

S/N 5236 11001 & Above
S/N 5237 11001 & Above

Mini Track Loader



MT52 CONTENTS

MAIN FRAME	9-22
MAINTENANCE ITEMS	9-10
MAIN FRAME	11-14
LIFT ARMS & BOB-TACH	15-16
BOB-TACH	17-18
FUEL SYSTEM	19-20
REAR DOOR	21-22
DRIVE TRAIN	23-26
DRIVE TRAIN	23-24
BRAKES	25-26
HYDRAULIC SYSTEM	27-42
HYDRAULIC CIRCUITRY	27-32
AUXILIARY HYDRAULICS	33-34
LIFT CYLINDER	35-36
TILT CYLINDER	37-38
GEAR PUMP	39-40
WORK VALVE	41-42
HYDROSTATIC SYSTEM	43-52
STEERING CONTROLS	43-46
HYDROSTATIC CIRCUITRY	47-48
HYDROSTATIC PUMP	49-50
DRIVE MOTOR	51-52
ELECTRICAL SYSTEM	53-62
CONSOLE ELECTRICAL CIRCUITRY	53-54
ENGINE ELECTRICAL CIRCUITRY	55-58
STARTER	59-60
ALTERNATOR	61-62
ENGINE & ATTACHING PARTS	63-118
ENGINE & ATTACHING PARTS	63-68
THROTTLE	69-70
ENGINE & GASKET KITS	71-72
ROCKER ARM COVER	73-74
ROCKER ARM & VALVES	75-76
CYLINDER HEAD	77-78
OIL PAN	79-80
GEARCASE	81-82
CRANKCASE	83-84
PISTON & CRANKSHAFT	85-86
MAIN BEARING CASE	87-88
CAMSHAFT	89-90
FUEL CAMSHAFT	91-92
GOVERNOR GROUP	93-94
SPEED CONTROL & STOP LEVER	95-96
WATER PUMP	97-98
WATER FLANGE & THERMOSTAT	99-100
MANIFOLDS	101-102
FUEL & INJECTION PUMP	103-104
INJECTION PUMP	105-106
INJECTOR NOZZLES	107-108
NOZZLE HOLDER	109-112
LOWER GASKET KIT	113-114
UPPER GASKET KIT	115-116
AIR FILTER	117-118
ACCESSORIES & OPTIONS	121-132
ATTACHMENT CONTROL KIT	121-122
ATTACHMENT ADAPTER	123-124
DECALS	125-128
LIGHT KIT	129-130
PLATFORM KIT	131-132
BULK ITEMS	133-134
NUMERICAL INDEX	135-158
NUMERICAL INDEX	135-158

MT52 CONTENTS

MAIN FRAME	11-22
MAIN FRAME	11-14
LIFT ARMS & BOB-TACH	15
BOB-TACH	17
FUEL SYSTEM	19
REAR DOOR	21
DRIVE TRAIN	23-26
DRIVE TRAIN	23
BRAKES	25
HYDRAULIC SYSTEM	27-44
HYDRAULIC CIRCUITRY	27-32
AUXILIARY HYDRAULICS	33
LIFT CYLINDER	35
TILT CYLINDER	37
GEAR PUMP	39
WORK VALVE	41
HYDROSTATIC SYSTEM	43-52
STEERING CONTROLS	43-46
HYDROSTATIC CIRCUITRY	47
HYDROSTATIC PUMP	49
DRIVE MOTOR	51
ELECTRICAL SYSTEM	53-62
CONSOLE ELECTRICAL CIRCUITRY	53
ENGINE ELECTRICAL CIRCUITRY	55-58
STARTER	59
ALTERNATOR	61
ENGINE & ATTACHING PARTS	63-118
ENGINE & ATTACHING PARTS	63-68
THROTTLE	69
ENGINE & COMPONENTS	71-112
LOWER GASKET KIT	113
UPPER GASKET KIT	115
AIR FILTER	117
ACCESSORIES & OPTIONS	121-132
ATTACHMENT CONTROL KIT	121
ATTACHMENT ADAPTER	123
DECALS	125, 127
LIGHT KIT	129
PLATFORM KIT	131
BULK ITEMS	133
NUMERICAL INDEX	135

GENERAL INFORMATION

When using the machine serial number, use the complete number. When Serial Numbers do not appear below the page heading, parts information applies to all loaders.

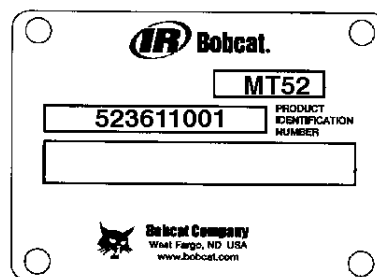
Some Serial Number breaks are not available at time of printing. These are listed as & Below or & Above.

The number shown in the quantity column in this manual is the number of parts needed for the illustration on the page. For some parts an "x" will be shown in the quantity column. This "x" indicates that the quantity to be used is "As Needed".

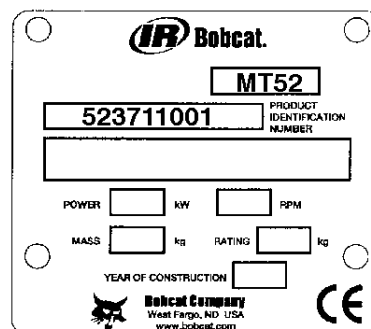
When references L.H. and R.H. are used in this manual, it is done from the operator's seat in the forward operating position.

To find the size and kind of bolt use the Bobcat Standard Microfiche (P/N 6566077).

Some of the illustrations and information found in this parts manual were supplied to Bobcat Company by machine component companies.



Domestic



European

ABBREVIATIONS & SYMBOLS

SALES = Order from Gwinner Sales Department

NSS = Not Serviced Separately

NAP = Not Available as Parts

* = Changed or Added Sections, Pages or Part Number

Disposition Code Definition (Found in the Remarks Column)

[A] = Use Up

[B] = Use Up on Other Application (See PNI)

[C] = File PDR Report With Bobcat Parts Sales

[D] = Part Number Error

Explications en francais	Grid Nb	3
Erklärungen auf deutsch	Grid Nb	4
Spiegazioni in italiano	Grid Nb	5
Explicaciones en espanol	Grid Nb	6
Verklaring in het Nederlands	Grid Nb	7

NOTE D'INFORMATION

Pour toute référence au numéro de série de l'engin, toujours donner le numéro complet.

Le chiffré apparaissant dans la colonne des quantités de ce manuel représentent le nombre de pièces nécessaires pour l'illustration reprise sur la page. Dans certains cas, on lira un "x" dans la colonne des quantités. Cet "x" indique que la quantité nécessaire est "selon besoin".

Pour toute référence vers la GAUCHE ou la DROITE dans ce manuel, considérer que la personne se trouve assise dans le siège de l'opérateur, en position de fonctionnement en marche avant.

Certaines illustrations et informations reprises dans ce manuel de pièces de rechange ont été fournies à Bobcat par des fabricants de composants.

ABREVIATIONS & SYMBOLES

SALES	= Commander au Service Ventes à Bruxelles
NSS	= Pas vendu séparément
NAP	= Non disponible comme pièce de rechange
*	= Chapitre, page ou numéro de pièce modifié ou supplémentaire
BTI	= Bobcat Technical Information Bulletin : voir à la fin de la microfiché du modèle concerné ou la microfiche générale reprenant l'ensemble des "BTI".
was 6535403	= était avant 6535403
adj. (adjustment)	= réglage
Assembly	= ensemble
available W/Ref.	= disponible avec réf.
bulk/sold per foot	= en vrac/vendu par pied
does not include	= ne comprend pas
included with	= compris dans
I.D.	= D.I. (diamètre intérieur)
O.D.	= D.E. (diamètre extérieur)
not in kit	= pas en kit
W/ - WO/	= inclus/ - non inclus/
Qty	= quantité requise
see page/ref.	= voir page/réf.
used with ref/	= utilisé avec réf.
0,05 inch thickness	= 0,05 pouce d'épaisseur (un pouce = 25.4 mm)
weld on	= à souder

ALLGEMEINE INFORMATIONEN

Bei Angabe der Maschinen-Seriennummer stets die komplette Nummer angeben.

Bei der in der Mengenspalte (Anzahl) in diesem Handbuch angegebenen Zahl handelt es sich um die Anzahl von Teilen, die für die Abbildung auf der betreffenden Seite benötigt werden. Bei manchen Teilen in der Mengenspalte ist ein "x" angegeben. Dieses "x" weist darauf hin, dass sich die Anzahl der verwendeten Teile auf den "Bedarf" bezieht.

Bei Verwendung der Seitenangaben links und rechts in diesem Handbuch gelten diese für die Blickrichtung vom Fahrersitz aus, und zwar in Vorwärts-Betriebsrichtung.

Einige der in diesem Ersatzteilhandbuch aufgeführten Abbildungen und Informationen wurden der Bobcat von den Herstellern von Maschinenbauteilen zur Verfügung gestellt.

ABKÜRZUNGEN UND SYMBOLE

SALES	= Bestellung bei der Verkaufsabteilung in Brüssel
NSS	= Nicht einzeln erhältlich
NAP	= Nicht als Ersatzteil erhältlich
*	= Geänderte oder hinzugefügte Abschnitte, Seiten oder Teilenummern
BTI	= Bobcat Technical Information Bulletin : Siehe am Ende der Mikrokarte des jeweiligen Modells oder der allgemeinen Mikrokarte der BTI.
was 6535403	= War 6535403
adj.	= Einstellung
Assembly	= Baugruppe
available W/Ref.	= erhältlich mit der Referenz
bulk/sold per foot	= Mengenabnahme / Verkauf pro Fuss
does not include	= beinhaltet nicht
included with	= enthalten in
I.D.	= Innendurchmesser
O.D.	= Aussendurchmesser
not in kit	= nicht in Bausatz
W/ - WO/	= mit/ - ohne/
Qty	= Anzahl
see page/ref.	= Siehe Seite / Referenz
used with ref.	= verwendet mit Referenz
0.05 inch thickness	= Dicke : 0.05 Zoll (ein Zoll = 25.4 mm)
weld on	= anschweissen

INFORMAZIONI GENERALI

Quando si usa il numero di serie della macchina usare il numero completo.

Il numero mostrato nella colonna della quantità di questo manuale corrisponde al numero di componenti necessari per l'illustrazione della pagina. Per alcuni componenti appare "X" nella colonna delle quantità. Questa "X" indica che la quantità da usare è "come necessario".

See in questo manuale si fa riferimento alla parte destra o sinistra, si intende dal sedile dell'operatore nella posizione in avanti di funzionamento.

Alcune delle illustrazioni e informazioni trovate in questo manuale di componenti sono state fornite alla Bobcat da società di componenti di macchine.

SIMBOLI E ABBREVIAZIONI

SALES	= Ordinare al servizio vendite di Bruxelles
NSS	= Non vendute separatamente
NAP	= Non disponibile come componente
*	= Sezioni, pagine o numeri di componente cambiati o aggiunti
BTI	= (Bobcat Technical information) Ved. al termine del microfiche del modello relativo oppure microfiche generale
was 6535403	= era 6535403
adj. (adjustment)	= regol. (regolazione)
Assembly	= Complessivo
available W/ref.	= disponibile con rif.
bulk/sold per foot	= alla rinfusa/venduto al piede
does not include	= non comprende
Included with	= compreso con
I.D.	= d. i.
O.D.	= d. e.
not in kit	= non fa parte del kit
W/ - WO/	= con - senza
Qty	= Qtà
see page/ref	= ved. pagina/rif.
used with ref.	= usato con il rif.
0,05 inch thickness	= spessore 0,05 pollici (un pollice = 25,4 mm)
weld on	= a saldare

Buy Now



Our support email:

ebooklibonline@outlook.com