

**PLANERS
WHEEL
SAWS**

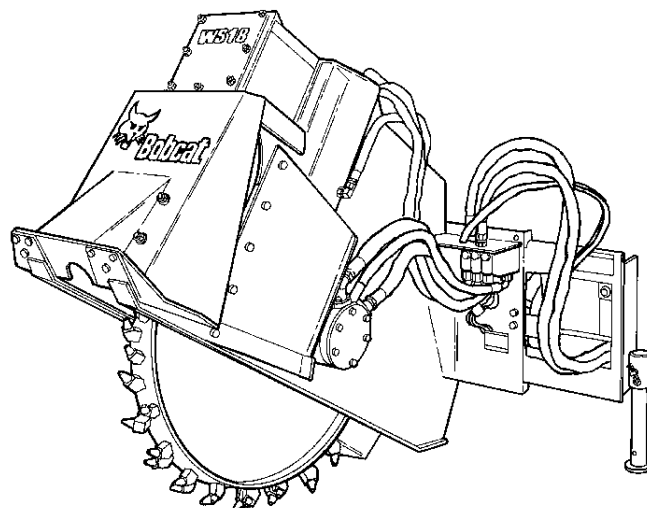
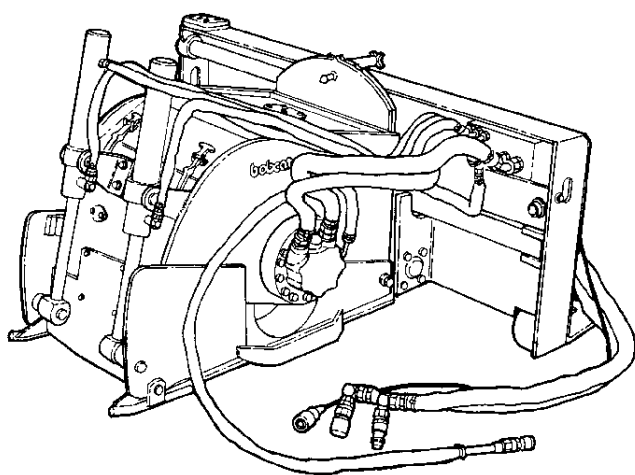


Bobcat®

VOLUME 4

Attachments

**Parts
Manual**



VOLUME INDEX

<p>VOLUME 1 Contains</p>	<p>VOLUME 7 Contains</p> <p>CHIPPER CONCRETE MIXER CONCRETE PUMP</p> <p>(P/N 6901469)</p>
<p>VOLUME 2 Contains</p> <p>AUGERS BREAKERS CUTTER CRUSHER (P/N 6901459)</p>	<p>VOLUME 8 Contains</p>
<p>VOLUME 3 Contains</p>	<p>VOLUME 9 Contains</p>
<p>VOLUME 4 Contains</p> <p>PLANERS WHEEL SAWS</p> <p>(P/N 6901463)</p>	<p>VOLUME 10 Contains</p> <p>VERSAHANDLER ATTACHMENTS: AUGER, BROOM, BUCKETS, GRAPPLES, PALLET FORKS & BOOM TRUSS</p> <p>(P/N 6901407)</p>
<p>VOLUME 5 Contains</p>	
<p>VOLUME 6 Contains</p>	

VOLUME 4 CONTENTS

PLANERS	10-152
MAIN FRAME	10-21
843H MOTOR HYDRAULIC CIRCUITRY	22-27
MOTOR HYDRAULIC CIRCUITRY	28-29
SIDESHIFT HYDRAULIC CIRCUITRY	30-31
843H & 853H SIDESHIFT HYDRAULIC CIRCUITRY	32-35
SIDESHIFT HYDRAULIC CIRCUITRY (PLANER S/N 910300101 & ABOVE)	36-37
MANUAL & HYDRAULIC SKI ADJUSTERS	38-41
PLANER GUIDE RODE	42
HOSE CONVERSION	43
PLANER DECALS	44-45
PLANER HYDRAULICS	46-48
HYDRAULIC VALVE	50-51
DEPTH CONTROL MOTOR	52-55
PLANER MOTOR	56-61
HYDRAULIC CUSHION VALVE	62
SIDE SHIFT CYLINDER	63
MAIN FRAME (18" & 24" PLANERS)	64-65
HOUSING GROUP (18" & 24" PLANERS)	66-71
HYDRAULIC CIRCUITRY (18" & 24" PLANERS)	72-77
CONTROL VALVE (18" & 24" PLANERS)	78-79
MOTOR (18" & 24" PLANERS)	80-85
DEPTH CONTROL CYLINDER (18" & 24" PLANERS)	86
SIDE SHIFT CYLINDER (18" & 24" PLANERS)	87
GUIDE ROD KIT (18" & 24" PLANERS)	88
MAIN FRAME (16" SURFACE PLANER)	90-91
HOUSING GROUP (16" SURFACE PLANER)	92-93
HYDRAULIC CIRCUITRY (16" SURFACE PLANER)	94-97
CONTROL VALVE (16" SURFACE PLANER)	98-99
MOTOR (16" SURFACE PLANER)	100-101
DEPTH CONTROL CYLINDER (16" SURFACE PLANER)	102
SIDE SHIFT CYLINDER (16" SURFACE PLANER)	103
GUIDE ROD KIT (16" SURFACE PLANER)	104
HOUSING GROUP (40" PLANER)	106-109
MOTOR ASSY (40" PLANER)	110-111
CYLINDERS & BUSHINGS (40" PLANER)	112
SIDE SHIFT CYLINDER (40" PLANER)	113
DEPTH CONTROL CYLINDER (40" PLANER)	114
TILT CYLINDER (40" PLANER)	115
HYDRAULIC CIRCUITRY (40" PLANER)	116-121
CONTROL VALVE (40" PLANER)	122-123
MAIN FRAME (STANDARD FLOW PLANER)	124-127
VALVE (STANDARD FLOW PLANER)	128
CYLINDER (STANDARD FLOW PLANER)	129
HYDROSTATIC MOTOR (STANDARD FLOW PLANER)	130-131
MAIN FRAME (14" STANDARD FLOW PLANER)	132-133
HOUSING GROUP (14" STANDARD FLOW PLANER)	134-137
HYDRAULIC CIRCUITRY (14" STANDARD FLOW PLANER)	138-141
SELECTOR VALVE (14" STANDARD FLOW PLANER)	142-143
MOTOR (14" STANDARD FLOW PLANER)	144-145
SIDE SHIFT CYLINDER (14" STANDARD FLOW PLANER)	146
GUIDE ROD KIT (14" STANDARD FLOW PLANER)	147
HYDRAULIC DEPTH CONTROL KIT (14" STANDARD FLOW PLANER)	148-149
CONTROL VALVE (14" STANDARD FLOW PLANER)	150-151
DEPTH CONTROL CYLINDER (14" STANDARD FLOW PLANER)	152
WHEEL SAWS	154-189
WHEEL SAW - MAIN FRAIME (WS12 & WS18)	154-159
WHEEL SAW - SIDESHIFT CYLINDER (WS12)	160
WHEEL SAW - DEPTH CONTROL CYLINDER (WS12)	161
WHEEL SAW - SIDESHIFT CYLINDER (WS18)	162
WHEEL SAW - DEPTH CONTROL CYLINDER (WS18)	163
WHEEL SAW - HYDROSTATIC MOTOR (WS12 & WS18)	164-165
WHEEL SAW - GEARBOX (WS12 & WS18)	166-167
WHEEL SAW - VALVE (WS12 & WS18)	168
WHEEL SAW - MAIN FRAIME (WS18 & WS24)	170-175
WHEEL SAW - MOUNTING FRAME (WS18 & WS24)	176-177

VOLUME 4 CONTENTS (CONT'D)

WHEEL SAWS (CONT'D)	154-189
WHEEL SAW - MOTOR (WS18 & WS24)	178-179
WHEEL SAW - SIDE SHIFT CYLINDER (WS18 & WS24)	180
WHEEL SAW - DEPTH CONTROL CYLINDER (WS18 & WS24)	181
WHEEL SAW - TRENCH CLEANER CYLINDER (WS18 & WS24)	182
WHEEL SAW - HYDRAULIC & ELECTRIC CIRCUITRY (WS18 & WS24)	184-185
WHEEL SAW - HYDRAULIC CIRCUITRY (WS18 & WS24)	186-187
WHEEL SAW - CONTROL VALVE (WS18 & WS24)	188-189
NUMERICAL INDEX	190-218
NUMERICAL INDEX	190-218

GENERAL INFORMATION

When using the machine serial number, use the complete number.

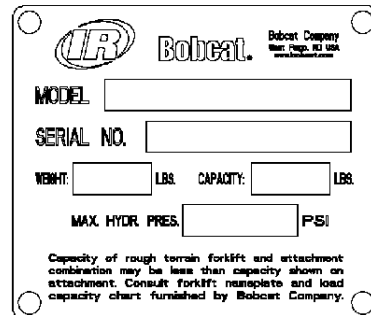
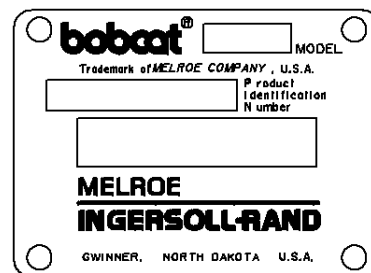
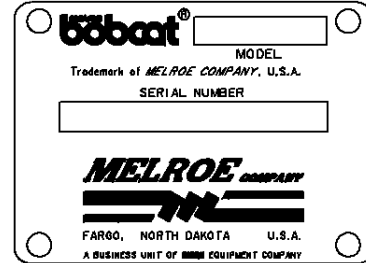
Some Serial Number breaks are not available at time of printing. These are listed as & Below or & Above.

The number shown in the quantity column in this manual is the number of parts needed for the illustration on the page. For some parts an "x" will be shown in the quantity column. This "x" indicates that the quantity to be used is "As Needed".

When references L.H. and R.H. are used in this manual, it is done from the operator's seat in the forward operating position.

To find the size and kind of bolt use the Bobcat Standard Microfiche (P/N 6566077).

Some of the illustrations and information found in this parts manual were supplied to Bobcat Company by machine component companies.



ABBREVIATIONS & SYMBOLS

SALES = Order from Gwinner Sales Department

NSS = Not Serviced Separately

NAP = Not Available as Parts

***** = Changed or Added Sections, Pages or Part Numbers

Disposition Code Definition (Found in the Remarks Column)

[A] = Use Up

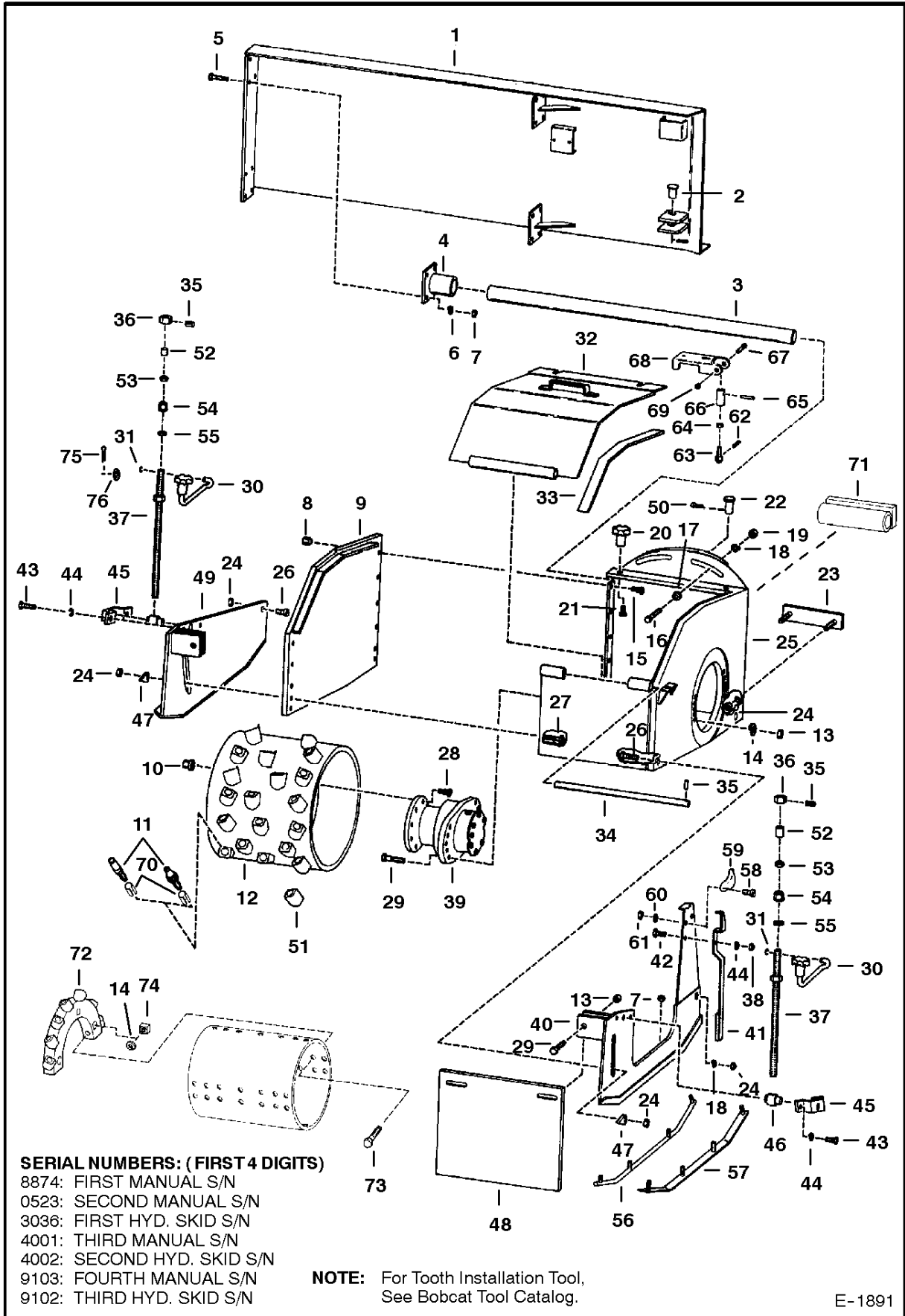
[B] = Use Up on Other Applications (See PNI)

[C] = File PDR Report With Bobcat Parts Sales

[D] = Part Number Error

Explications en francais	Grid Nb	3
Erklärungen auf deutsch	Grid Nb	4
Spiegazioni in italiano	Grid Nb	5
Explicaciones en espanol	Grid Nb	6
Verklaring in het Nederlands	Grid Nb	7

MAIN FRAME
 (Planer - S/N 052300699 & Below, 303600100 & Below)



MAIN FRAME

Ref.N°	Part N°	Description	Remarks	Serial N°	Qty.
1	6650159	FRAME	Bob-Tach		1
2	6650160	PIN			1
3	6650161	ROD SLIDE			2
4	6650162	END CAP			4
5	17C-834	BOLT			16
6	4E-8	WASHER			16
7	61D-8	NUT			16
8	6610379	NUT	Was 6650163 [A]		9
9	6650164	SIDE			1
10	6651480	NUT			x
11	6672259	BIT	std all purpose - sharp point		x
11	6650137	BIT	all purpose - blunt point for longer life		x
11	6650138	BIT	concrete - carbide point		x
11	6659946	BIT	heavy duty - carbide point		x
12	SALES	DRUM	2' Wide all purpose - 24 bits - Sales #6662756inD1}0		1
12	SALES	DRUM	4' Wide all purpose - 39 bits - Sales #6652876inD1}2		1
12	SALES	DRUM	6' Wide all purpose - 34 bits - Sales #6661408inD1}4		1
12	SALES	DRUM	8' Wide all purpose - 34 bits - Sales #6658181inD1}6		1
12	SALES	DRUM	12' Wide all purpose - 40 bits - Sales #6658182inD1}8		1
12	SALES	DRUM	16' Wide asphalt - 50 bits - Sales #6651216inD1};		1
12	SALES	DRUM	16' Wide all purpose - 62 bits - Sales #6652875inD1}<		1
13	61D-10	NUT			12
14	4E-10	WASHER			12
15	6650191	STUD			9
16	37C-1240	BOLT	Was 17C-1232 [B]		2
17	25E-27	WASHER			2
18	4E-12	WASHER			2
19	61D-12	NUT			2
20	6650165	KNOB		887400303 & Bel	2
21	17C-832	BOLT		887400303 & Bel	2
22	6650166	PIN			1
23	6650167	CLAMP			1
24	59D-12	NUT			6
25	NAP	HOUSING	Order (1) of 6650168 housing, (1) of 6650167 clamp , (2) of 6667550 wear plate, (2) of 6667551 cover, .(2) of 37C-1240 bolt, (2	910300100 & Bel	1
25	6650168	HOUSING			1
26	6654219	BOLT	Was 17C-1240 [B]		3
27	6654220	BOLT	Was 17C-1252 [B]		1
28	6650213	STUD			x
29	17C-1032	BOLT			12
30	6650169	CRANK	adj.		2
31	NAP	CLIP	Was 6650192 [A]		2
32	6650170	DOOR		887400303 Thru, 052300500	1
32	6655953	DOOR		052300501 & Abv	1
33	6653205	CUSHION SEAL			2
34	6650171	PIN			1
35	14J-2524	ROLL PIN			4
36	NAP	NUT	Order Ref. MAIN FRAME(52) - MAIN FRAME(55)	887400214 & Bel	2
37	6650173	BOLT			2
38	61D-6	NUT		887400303 & Bel	1
39		MOTOR	See Page PLANER MOTOR(1)-PLANER MOTOR(1)		1
40	NAP	SKID PLATE	Order 6669028 plate, 6669029 mount (4) of 84G-3710 bolt and Ref. MAIN FRAME(56) or MAIN FRAME(57) - Was 6650175 [A]	887400303 Thru, 052300500	1

Buy Now



Our support email:

ebooklibonline@outlook.com