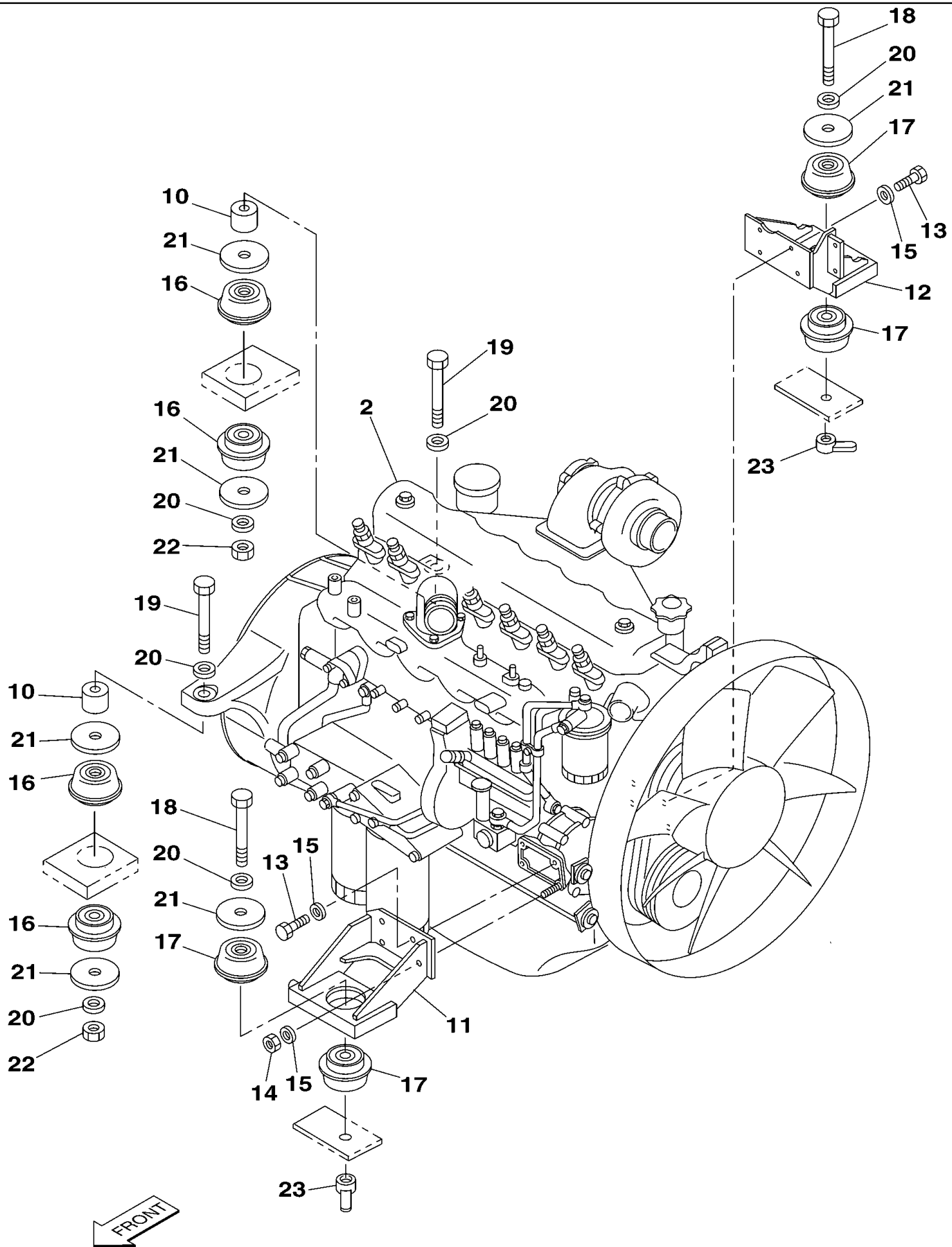




# PARTS CATALOGUE

CX290  
CASE CRAWLER EXCAVATOR

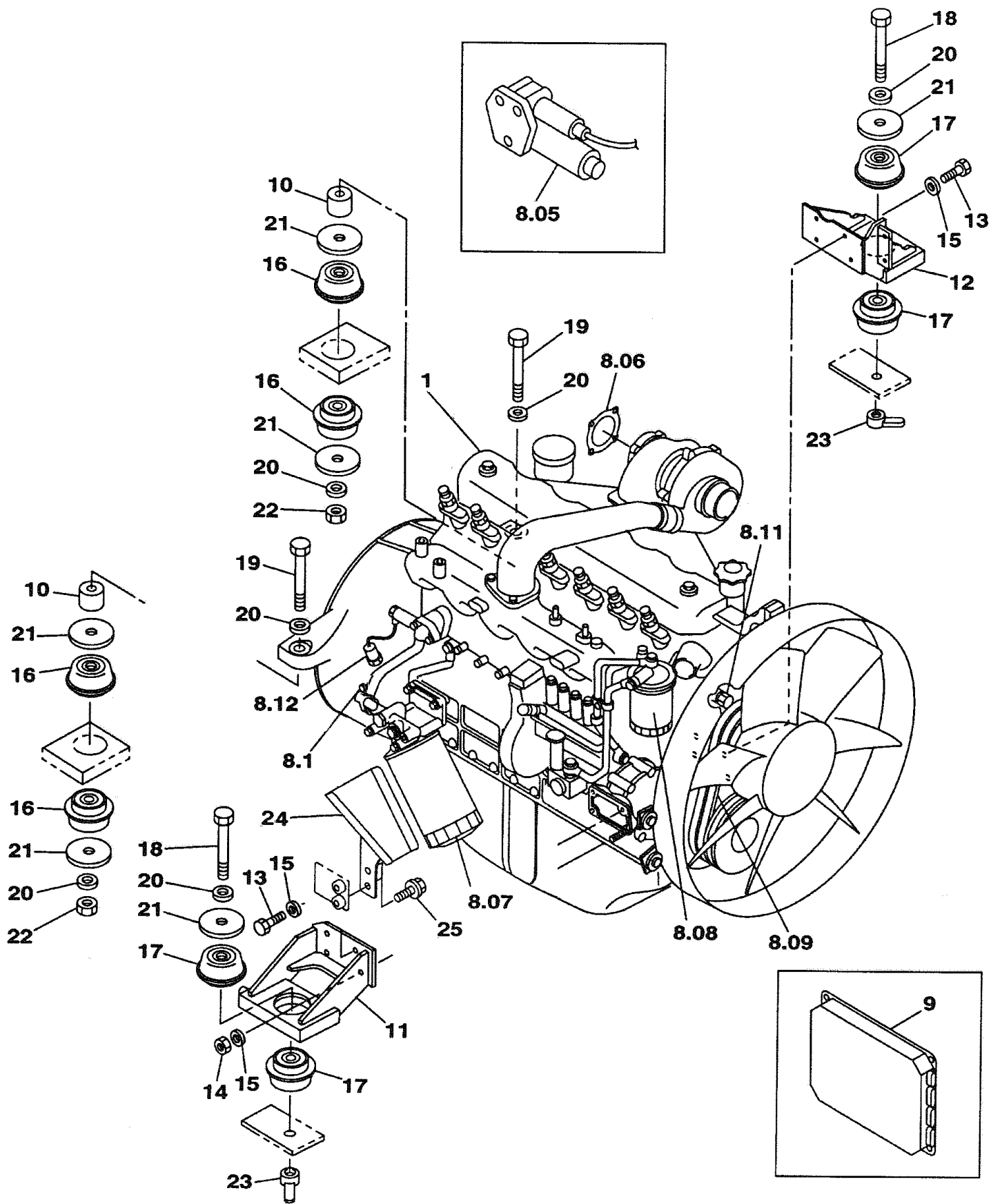


## CX290 CASE CRAWLER EXCAVATOR (EUROPE)

## 02-003-00(01) ENGINE MOUNTING - ENGINE

Ref	Part Number	Qty	Description
2	KBH0916	1	ENGINE ASSY, , See Page(s) 02-017-00-01 To 02-061-00-01, 03-011-00-01 To 03-027-00-01, 04-029-00-01
10	167984A1	2	SPACER,
11	KRH1341	1	SUPPORT,
12	KHH0485	1	SUPPORT,
13	159657A1	7	BOLT, M10 x 1.25 x 25
14	153604A1	1	NUT, M10 x 1.25
15	150409A1	8	WASHER, W M 10
16	KRH1225	4	RUBBER BLOCK,
17	KRH1226	4	RUBBER BLOCK,
18	827-16140	2	BOLT, Hex, M16 x 140, 10.9, M16 x 140
19	828-16210	2	BOLT, Hex, M16 x 210, 10.9, M16 x 210
20	150814A1	6	WASHER,
21	KRH1256	6	PLATE,
22	829-1416	2	NUT, M16, CI 10, N M16
23	KRH1251	2	NUT, M16

Until DCH29B0258



## CX290 CASE CRAWLER EXCAVATOR (EUROPE)

## 02-003-00(02) ENGINE MOUNTING - ENGINE

Ref	Part Number	Qty	Description
1	KBH1010	1	ENGINE, , Consists Of Ref. Numbers 8.05 To 9, Also Page(s) 02-017-00 01 To 02-061-00 01, 03-011-00 01 To 03-027-0- 01, 04-029-00 01 To 04-033-00 01
8.05	REF	1	INSTRUCTION, Motor, See Page(s) 04-029-00 01 Ref. 1
8.06	REF	1	INSTRUCTION, Gasket, See Page(s) 02-007-00 01 Ref. 12
8.07	REF	1	INSTRUCTION, Oil Filter, See Page(s) 02-039-01 01 Ref.2
8.08	REF	1	INSTRUCTION, Fuel Filter, See Page(s) 03-013-00 01 Ref. 1
8.09	REF	1	INSTRUCTION, Belt, See Page(s) 02-017-00 01 Ref. 36
8.1	REF	1	INSTRUCTION, Sensor, Temperature, See Page(s) 04-029-00 01 Ref. 7
8.11	REF	1	INSTRUCTION, Sensor, Water Temperature, See Page(s) 04-029-00 01 Ref. 16
8.12	REF	1	INSTRUCTION, Switch, Oil Pressure, See Page(s) 04-029-00 01 Ref. 6
9	REF	1	INSTRUCTION, Controler, See Page(s) 04-029-00 01 Ref. 14
10	167984A1	2	SPACER,
11	KRH1341	1	SUPPORT,
12	KHH0485	1	SUPPORT,
13	159657A1	7	BOLT, M10 x 1.25 x 25
14	153604A1	1	NUT, M10 x 1.25
15	150409A1	8	WASHER, W M 10
16	KRH1225	4	RUBBER BLOCK,
17	KRH1226	4	RUBBER BLOCK,
18	827-16140	2	BOLT, Hex, M16 x 140, 10.9, M16 x 140
19	828-16210	2	BOLT, Hex, M16 x 210, 10.9, M16 x 210
20	150814A1	6	WASHER, W 16
21	KRH1256	6	PLATE,
22	829-1416	2	NUT, M16, CI 10, N M16
23	KRH1251	2	NUT, M16
24	KHH0548	1	SUPPORT,
25	166052A1	2	BOLT, M10 x 25

DCH29B0259 And After

Thank you so much for reading.  
Please click the “Buy Now!”  
button below to download the  
complete manual.



After you pay.

You can download the most  
perfect and complete manual in  
the world immediately.

Our support email:

[ebooklibonline@outlook.com](mailto:ebooklibonline@outlook.com)