

CX460 CASE CRAWLER EXCAVATOR (EUROPE)

02-003-00(01) ENGINE - ENGINE MOUNTING

Ref	Part Number	Qty	Description
2	KTH0660	1	ENGINE ASSY, , See Page(s) 02-019-00-01 To 02-061-00-01, 03-011-00-01 To 03-033-00-01, 04-029-00-01
11	KTH0656	1	SUPPORT,
12	KTH0657	1	SUPPORT,
13	827-10040	12	BOLT, Hex, M10 x 40, 10.9, Full Thd, M10 x 40; 10.9
14	150409A1	12	WASHER, 10,5 x 21 x 3,2 mm
15	KSH0497	2	SPACER,
16	150874A1	6	WASHER,
17	KTH0566	4	INSULATOR BLOCK,
18	KTH0567	4	INSULATOR BLOCK,
19	827-20150	2	BOLT, Hex, M20 x 150, 10.9, M20 x 150; 10.9
20	102R020Y260R	2	BOLT,
21	150817A1	8	WASHER,
22	162R020VR	2	NUT,
23	KSH0923	2	NUT,
24	150860A1	1	CLAMP,
25	840-168	1	SCREW, Cross Pan Hd, M6 x 8, M6 x 8; 4.8
26	150067A1	1	STRAP,
27	827-12050	4	BOLT, Hex, M12 x 50, 10.9, M12 x 50; 10.9
28	183-112VR	4	WASHER, SPRING,

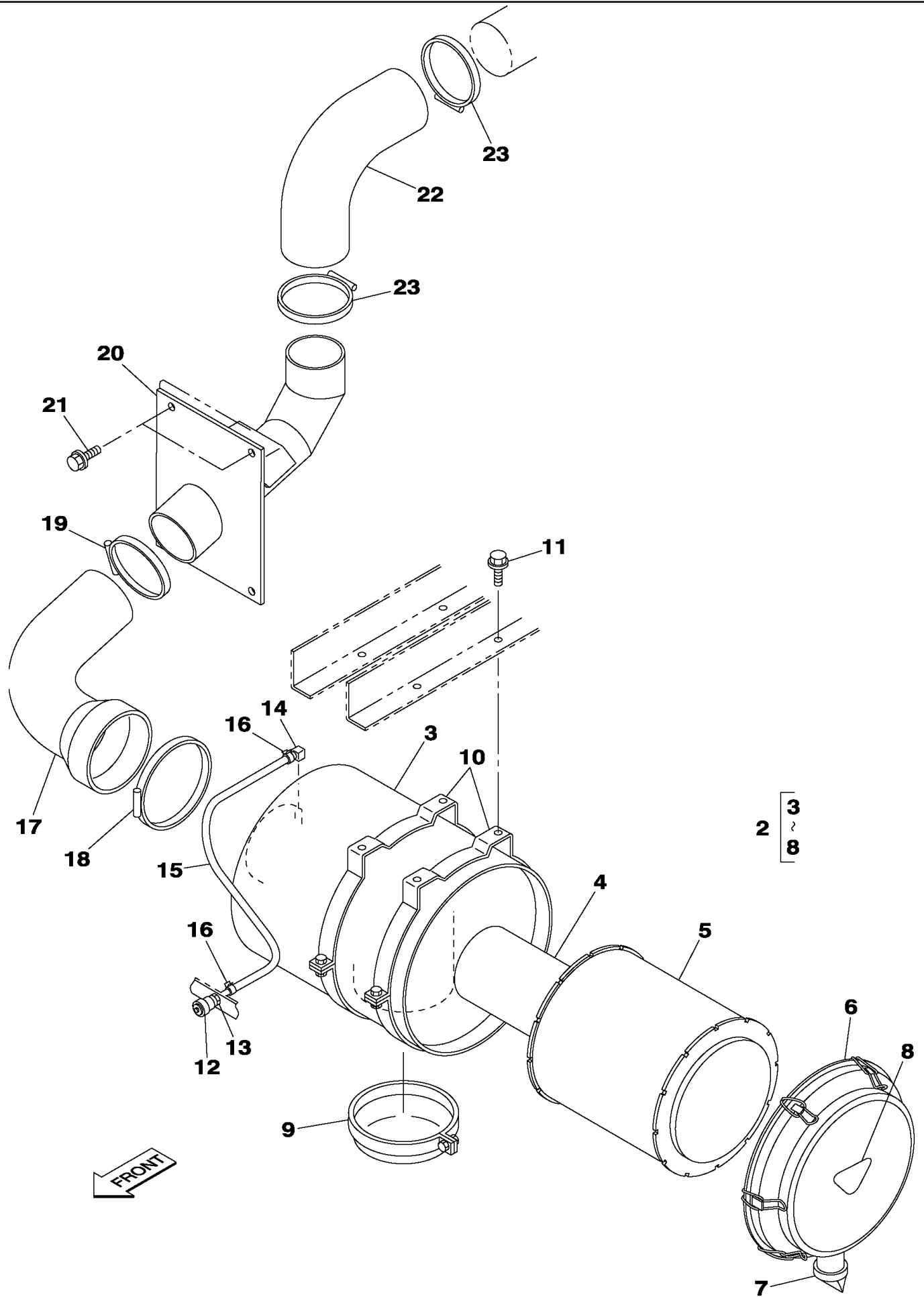
Until DC46B... Tier 2

CX460 CASE CRAWLER EXCAVATOR (EUROPE)

02-003-00(02) ENGINE - ENGINE MOUNTING

Ref	Part Number	Qty	Description
1	KTH0660	1	ENGINE ASSY, , Consists Of Ref. 3 To 10, Also Page(s) 02-019-00-01 To 02-061-00-01, 03-011-00-01 To 03-033-00-01, 04-029-00-01 To 04-033-00 01
3	REF	1	INSTRUCTION, Motor, See Page(s) 04-029-00 01 Ref. 488
4	REF	1	INSTRUCTION, Gasket, See Page(s) 02-007-00 01 Ref. 12
5	REF	1	INSTRUCTION, Relay, See Page(s) 04-029-00 01 Ref. 424
6	REF	1	INSTRUCTION, Oil Filter, See Page(s) 02-037-00 01 Ref. 2
7	REF	1	INSTRUCTION, Oil Filter, See Page(s) 02-041-00 01 Ref. 391
8	REF	1	INSTRUCTION, Fuel Filter, See Page(s) 03-015-00 01 Ref. 58
9	REF	1	INSTRUCTION, Belt, See Page(s) 02-017-00 01 Ref. 36
10	REF	1	INSTRUCTION, Controler, See Page(s) 04-029-00 01 Ref. 478
11	KTH0656	1	SUPPORT,
12	KTH0657	1	SUPPORT,
13	827-10040	12	BOLT, Hex, M10 x 40, 10.9, Full Thd, M10 x 40; 10.9
14	150409A1	12	WASHER, 10,5 x 21 x 3,2 mm
15	KSH0497	2	SPACER,
16	150874A1	6	WASHER,
17	KTH0566	4	INSULATOR BLOCK,
18	KTH0567	4	INSULATOR BLOCK,
19	827-20150	2	BOLT, Hex, M20 x 150, 10.9, M20 x 150; 10.9
20	102R020Y260R	2	BOLT,
21	150817A1	8	WASHER,
22	162R020VR	2	NUT,
23	KSH0923	2	NUT,
24	150860A1	1	CLAMP,
25	840-168	1	SCREW, Cross Pan Hd, M6 x 8, M6 x 8; 4.8
26	150067A1	1	STRAP,
27	827-12050	4	BOLT, Hex, M12 x 50, 10.9, M12 x 50; 10.9
28	183-112VR	4	WASHER, SPRING,

DC46B... Tier 2 And After



Thank you so much for reading.
Please click the “Buy Now!”
button below to download the
complete manual.



After you pay.

You can download the most
perfect and complete manual in
the world immediately.

Our support email:

ebooklibonline@outlook.com