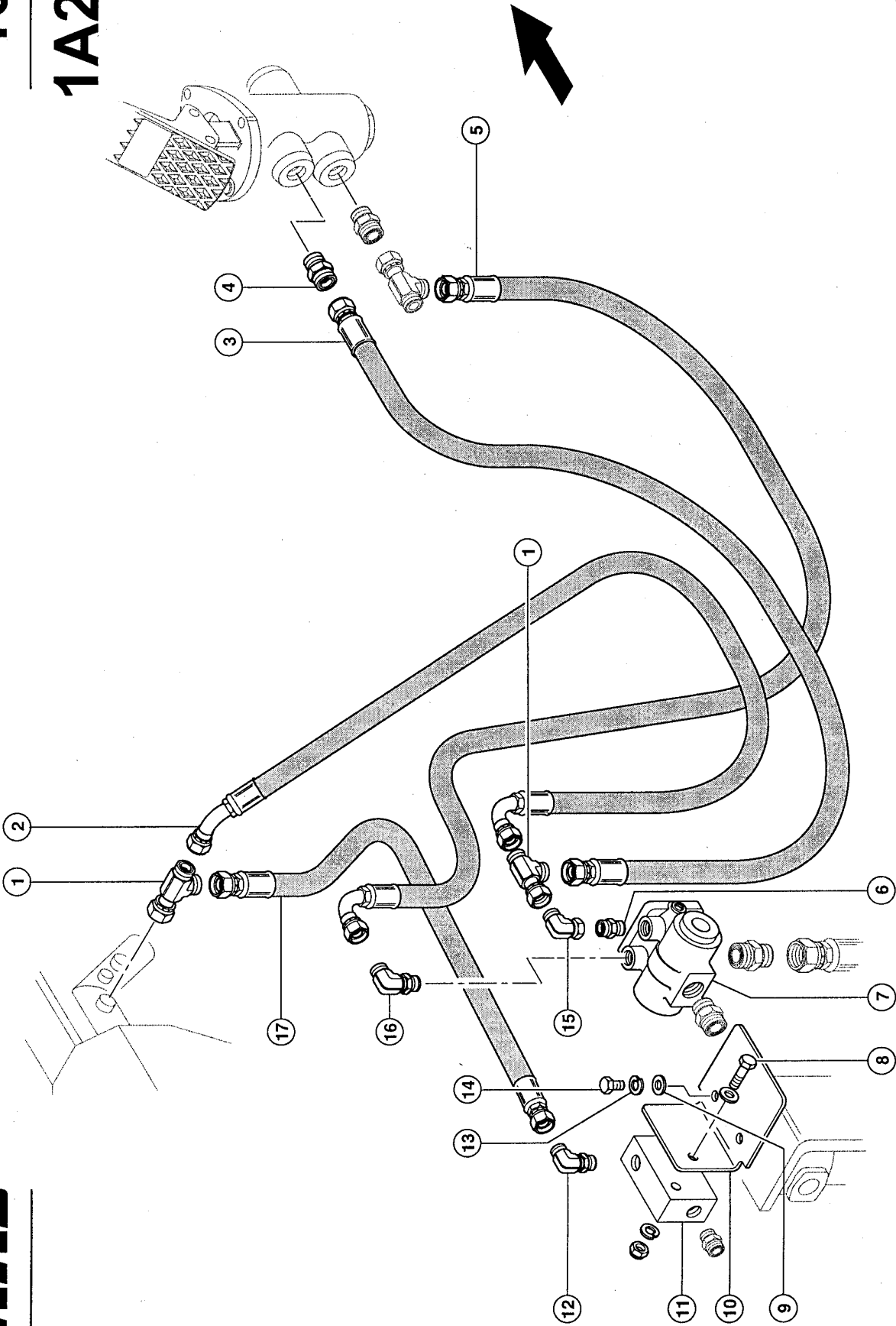


100

1A2A

TPL60384 RANGER 940 GX



CLAAS

108682

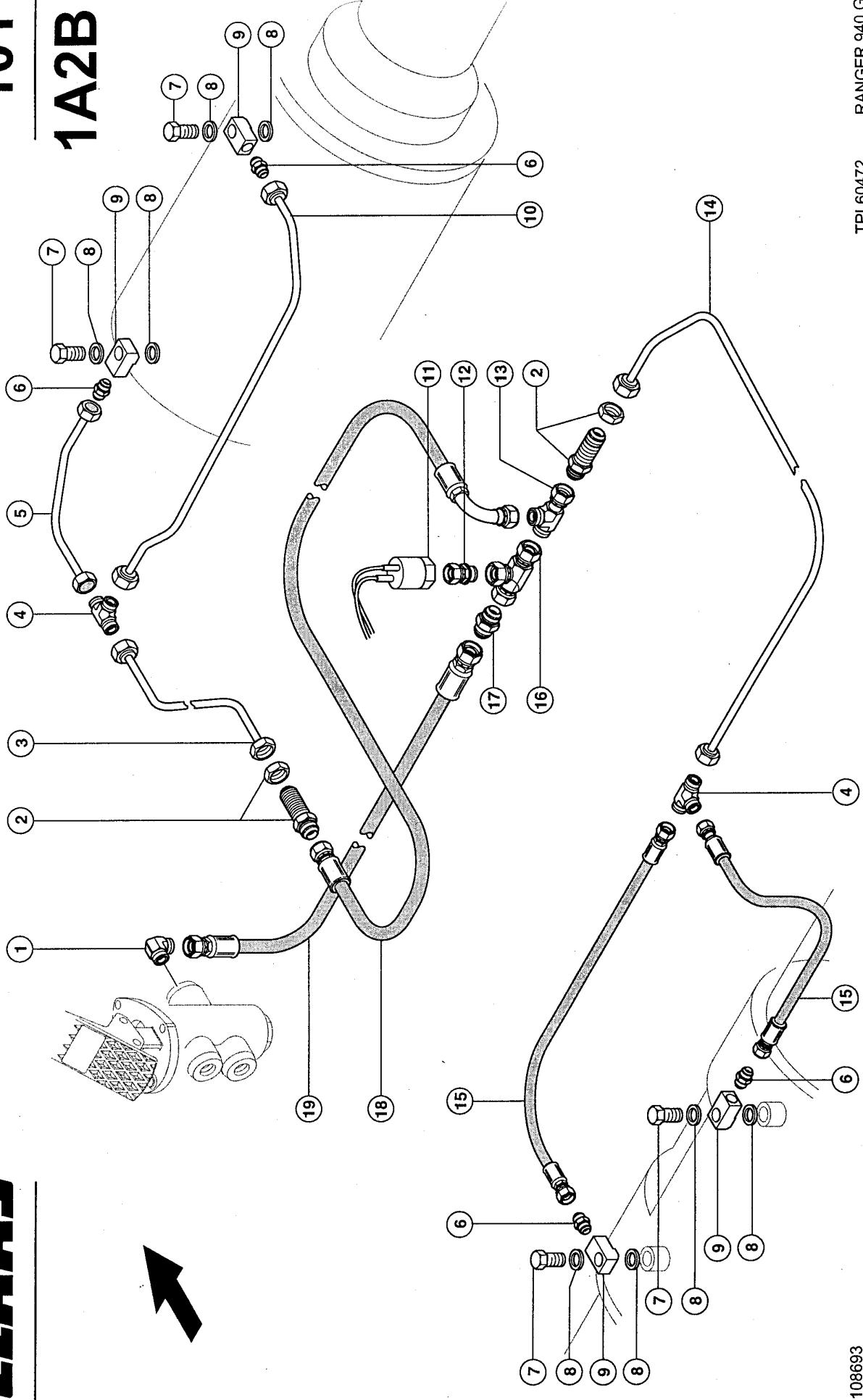
BRAKE LINES

Pos.	Part No.	Description	Dimension	Quantity	Conditions
1	00 0323 986 0	TEE	SWRT 10	1	
2	00 0325 248 0	HOSE	9/16"JIC STR-STR	1	
3	00 0325 250 0	HOSE		1	
4	00 0325 072 0	ADAPTER	SDS-10 X 9/16-18UNF	1	
5	00 0325 249 0	HOSE	3/4"JIC STR-90SW	1	
6	00 0321 455 0	SOCKET	SDS - 10 X 3/4-16UNF	1	
7	00 0323 892 0	VALVE		1	
8	00 0235 536 0	HEXAGON HEAD BOLT	M10X60	1	
8	00 0236 913 2	FLAT WASHER	10-10,5X20X2	1	
8	00 0238 316 0	LOCK NUT	M10	1	
9	00 0236 913 2	FLAT WASHER	10-10,5X20X2	2	
10	00 0313 195 0	BRACKET		1	
11	00 0323 885 0	STARTING VALVE		1	
12	00 0325 079 0	ELBOW	SDE 10 X 1/2-14 TYP H4		
13	00 0235 133 1	SPRING WASHER	10 -10,2X18,1X1,8	2	
14	00 0237 453 0	HEXAGON HEAD BOLT	M10X30	2	
15	00 0325 077 0	ELBOW	SWE 10	1	
16	00 0325 026 0	HOSE CLIP	53X19	1	
17	00 0325 257 0	HOSE	9/16 STR-135	1	

101

1A2B

TPL60472 RANGER 940 GX



CLAAS



108693

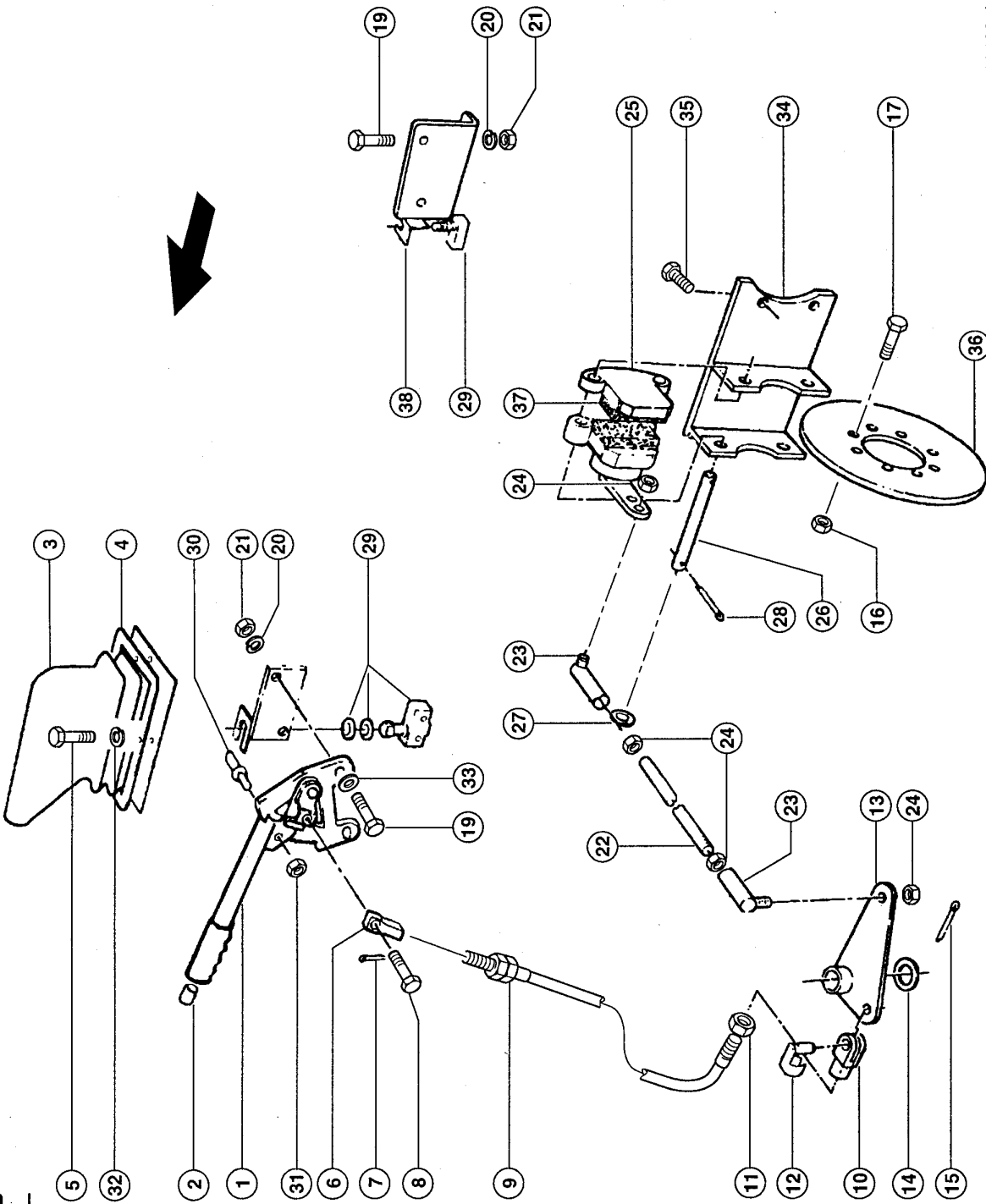
BRAKE LINES

Pos.	Part No.	Description	Dimension	Quantity	Conditions
1	00 0325 075 0	ELBOW	SDE - 6 X 9/16-18 UNF	1	
2	00 0325 071 0	SUPPORT	BHS 6	2	
3	00 0324 865 0	BRAKE PIPE		1	
4	00 0320 573 0	SOCKET	T 6	2	
5	00 0324 867 0	BRAKE PIPE		1	
6	00 0321 445 0	SCREW-IN FITTING	SDS - 6 X 7/16-20 UNF	4	
7	00 0324 864 0	PIN		4	
8	00 0324 858 0	COPPER DISK	A 12 X 18 X 1,74	8	
9	00 0324 869 0	BANJO CONNECTION	D 12 - 7/16-20 UNF	4	
10	00 0324 868 0	BRAKE PIPE		1	
11	00 0323 882 0	SWITCH		1	
12	00 0325 044 0	ADAPTER		1	
13	00 0325 040 0	T-PIECE		1	
14	00 0324 866 0	BRAKE PIPE		1	
15	00 0325 245 0	HOSE	1/4"BORE X 610LONG	2	
16	00 0325 040 0	T-PIECE		1	
17	00 0325 070 0	ADAPTER	S 6	1	
18	00 0325 246 0	HOSE		1	
19	00 0325 252 0	HOSE	7/16JIC STR-90SW	1	

CLAAS

102

1C1



TPL60429-1 RANGER 940 GX

108622

PARKING BRAKE

Pos.	Part No.	Description	Dimension	Quantity	Conditions
1	00 0321 082 0	HAND BRAKE LEVER		1	
2	00 0322 357 0	BUTTON		1	
3	00 0324 855 0	BELLOWS		1	
4	00 0324 856 0	SUPPORTING PLATE		1	
5	00 0320 109 0	SCREW	M6X12	4	
6	00 0324 857 0	CONNECTING PIECE		1	
7	00 0320 269 0	SPLIT PIN		1	
8	00 0321 465 0	PIN	9,45X33,32X2,38X28,581	1	
9	00 0323 886 0	BRAKE CABLE		1	
10	00 0322 613 0	FORK PIECE		1	
11	00 0320 368 0	LOCK NUT	5/16-24 UNF	2	
12	00 0320 658 0	SPRING CLIP		1	
13	00 0324 862 0	ANGLE LEVER		1	
14	00 0324 994 0	WASHER		1	
15	00 0325 005 0	SPLIT PIN		1	
16	00 0320 291 0	LOCK NUT	M12	8	
17	00 0235 553 0	HEXAGON HEAD BOLT	M12X45	8	
19	00 0237 442 0	HEXAGON HEAD BOLT	M8X25	4	
20	00 0320 191 0	SPRING WASHER	M08	2	
21	00 0320 317 0	NUT	M 8	2	
22	00 0324 863 0	ROD		1	
23	00 0325 062 0	BALL JOINT		2	
24	00 0320 365 0	NUT		4	
25	00 0324 859 0	PARKING BRAKE		1	
26	00 0324 861 0	PIN		2	
27	00 0324 995 0	WASHER	1/2"	4	
28	00 0325 066 0	SPLIT PIN	4.5DIA X 40 LONG	4	
29	00 0322 941 0	SWITCH		1	
30	00 0321 285 0	BEARING BOLT		1	
31	00 0320 295 0	NUT	M 6	1	
32	00 0320 191 0	SPRING WASHER	M08	4	
33	00 0236 912 2	FLAT WASHER	8 - 8,4X16X1,6	2	
34	00 0324 860 0	BRACKET		1	
35	00 0235 593 0	HEXAGON HEAD BOLT	M16X90	2	
36	00 0323 891 0	PARKING BRAKE		1	
37	00 0323 887 0	BRAKE SHOE		2	1)
38	00 0321 358 0	SUPPORT		1	

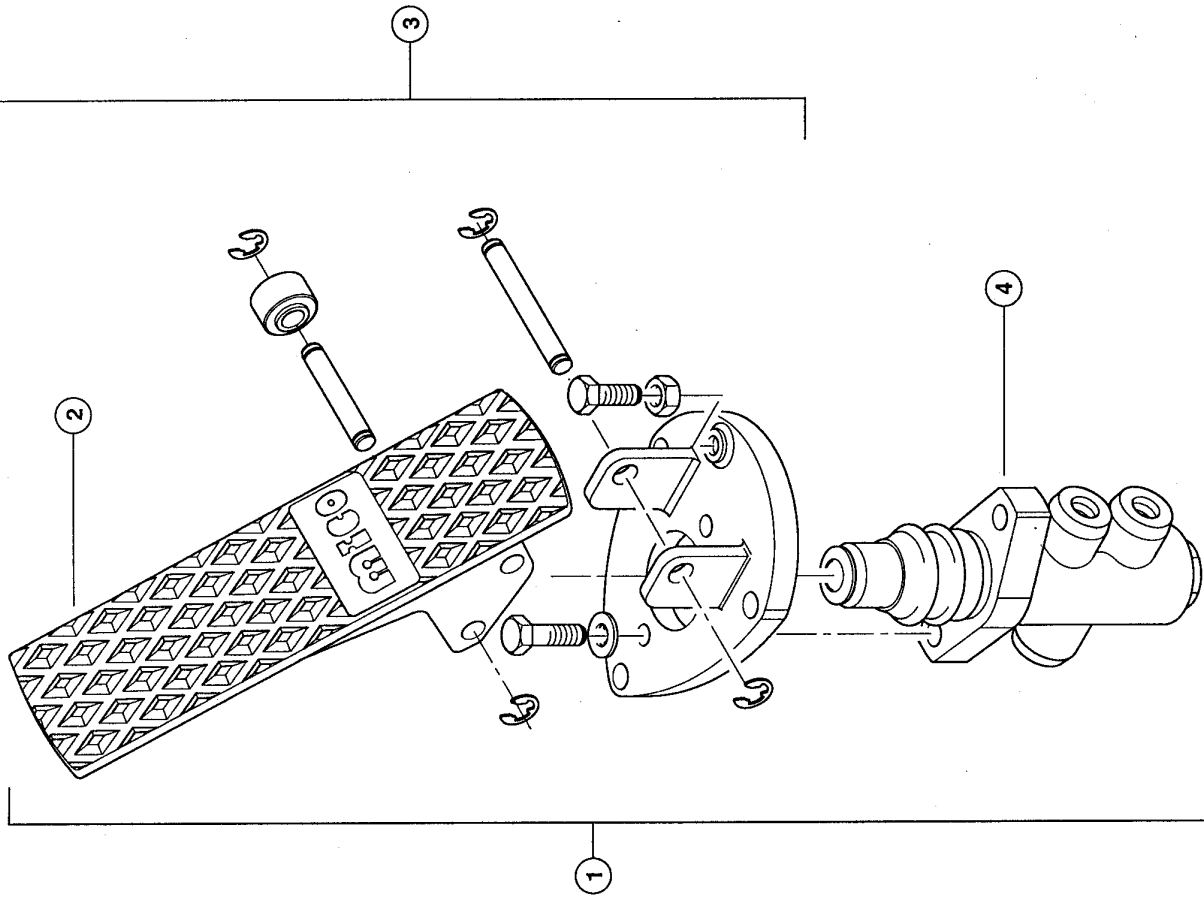
1) Remarks

(pair)

103

EG9916

Ranger 940 GX



CLAAS

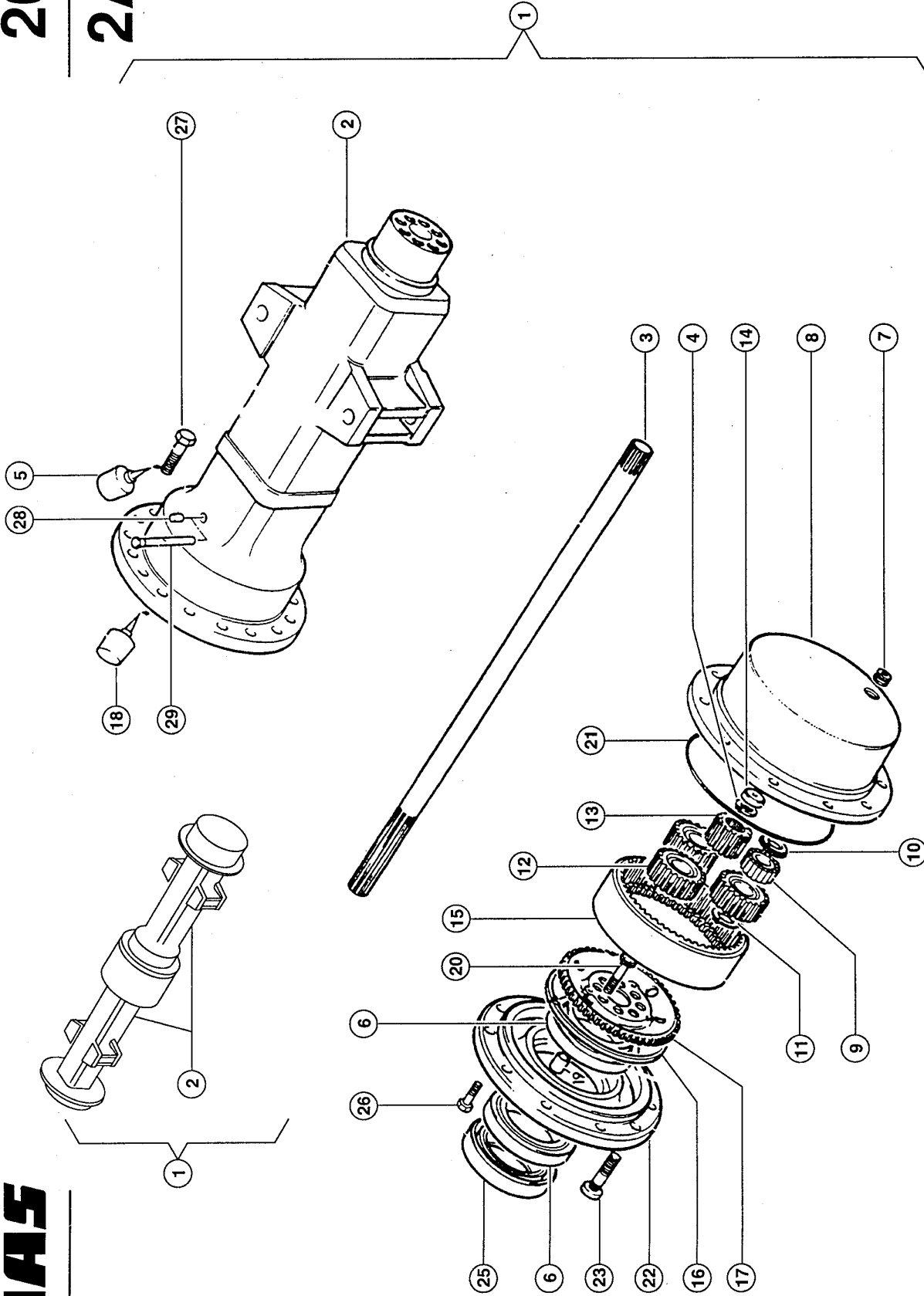
BRAKE PEDAL

Pos.	Part No.	Description	Dimension	Quantity	Conditions
1	00 0313 189 0	BRAKE PEDAL		1	1)
2	00 0316 027 0	PEDAL		1	
3	00 0316 028 0	BRAKE PEDAL		1	
4	00 0316 059 0	VALVE CPL.		1	
4	00 0316 060 0	REPAIR KIT		1	2)
1)	Remarks			compl.	
2)	Remarks			FUER VENTIL	

200

2A1

TPL60430 RANGER 940 GX



CLAAS

108621

FRONT AND REAR AXLES

Pos.	Part No.	Description	Dimension	Quantity	Conditions
1	00 0324 833 0	FRONT AXLE		1	1)
1	00 0324 834 0	REAR AXLE		1	2)
2	00 0324 377 0	AXLE HOUSING		2	3)
2	00 0324 431 0	AXLE HOUSING		2	4)
3	00 0324 379 0	SHAFT		2	
4	00 0324 380 0	SNAP RING		2	
5	00 0324 381 0	SEALING COMPOUND		1	
6	00 0324 637 0	BEARING		4	
7	00 0324 382 0	PLUG		2	
8	00 0324 383 0	PLANETARY CARRIER		2	
9	00 0324 384 0	BEARING		6	
10	00 0324 385 0	CIRCLIP		12	
11	00 0324 386 0	CIRCLIP		6	
12	00 0324 387 0	PLANETARY GEAR		6	
13	00 0324 388 0	GEAR		2	
14	00 0324 389 0	THRUST WASHER		2	
15	00 0324 390 0	TOOTHED RING		2	
16	00 0324 391 0	CIRCLIP		2	
17	00 0324 639 0	TOOTHED RIM		2	
18	00 0324 392 0	SEALING COMPOUND		1	
19	00 0324 393 0	HOLLOW BOLT		16	
20	00 0324 394 0	BOLT		16	
21	00 0324 395 0	O-RING		2	
21	00 0325 240 0	SEAL RING		1	
22	00 0324 396 0	HUB		2	
23	00 0323 893 0	WHEEL BOLT		5	
24	00 0324 397 0	BOLT		4	
25	00 0324 638 0	SEAL RING		2	
26	00 0324 398 0	SCREW		2	
27	00 0324 399 0	BOLT		1	
28	00 0324 378 0	BREATHER		1	
29	00 0324 606 0	VENTILATION PIPE		1	

1) Remarks Front axle 18,16: 1

2) Remarks HINTERACHSE 18,16 : 1

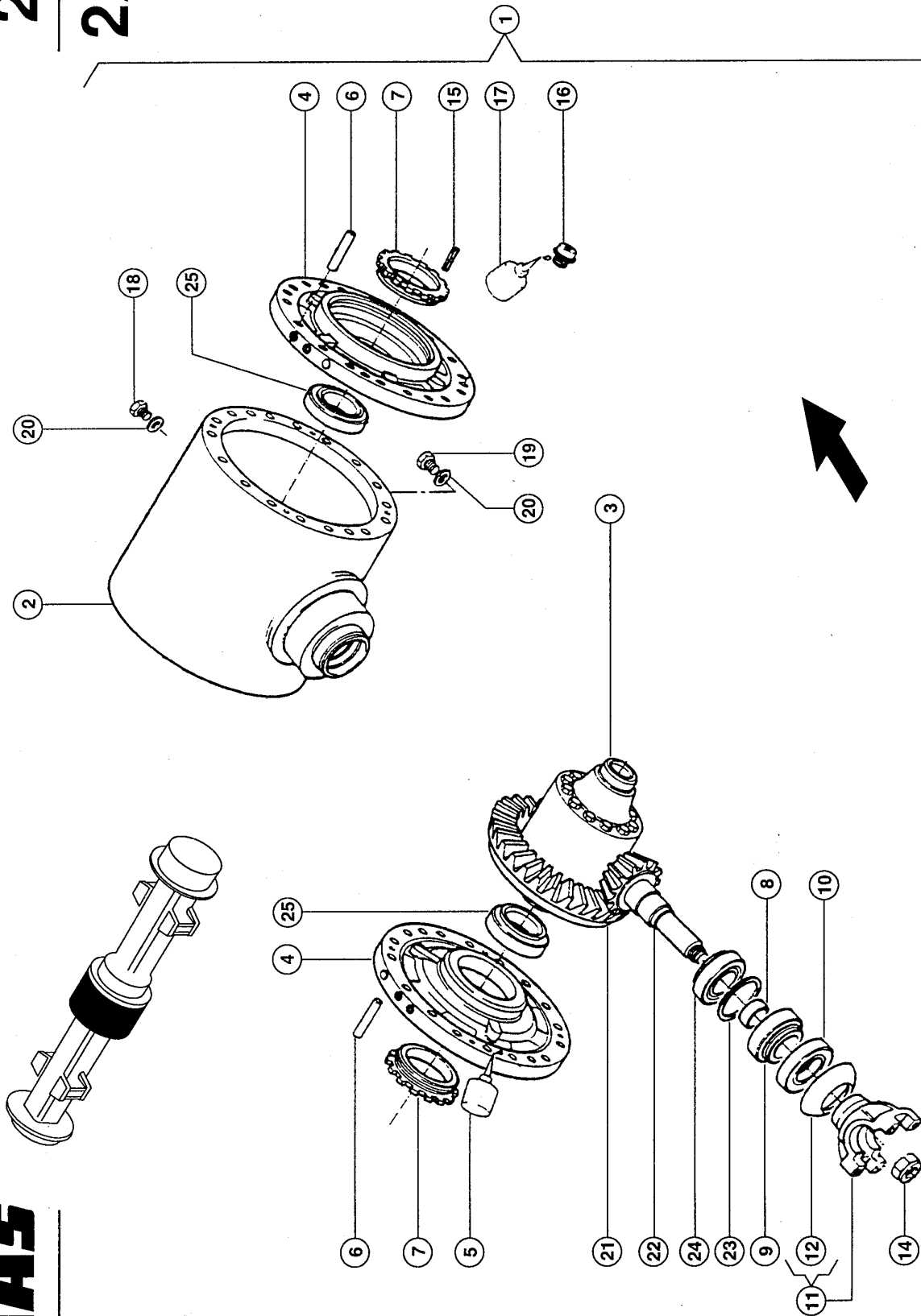
3) Remarks Front axle

4) Remarks HINTERACHSE

201

2A2

TPL60431 RANGER 940 GX



CLAAS

108624

AXLE DRIVE HEAD, FRONT AND REAR AXLES 1)

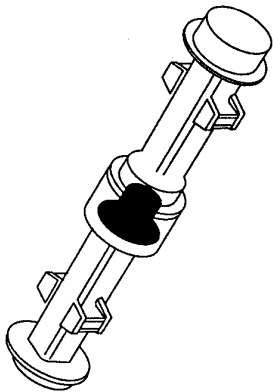
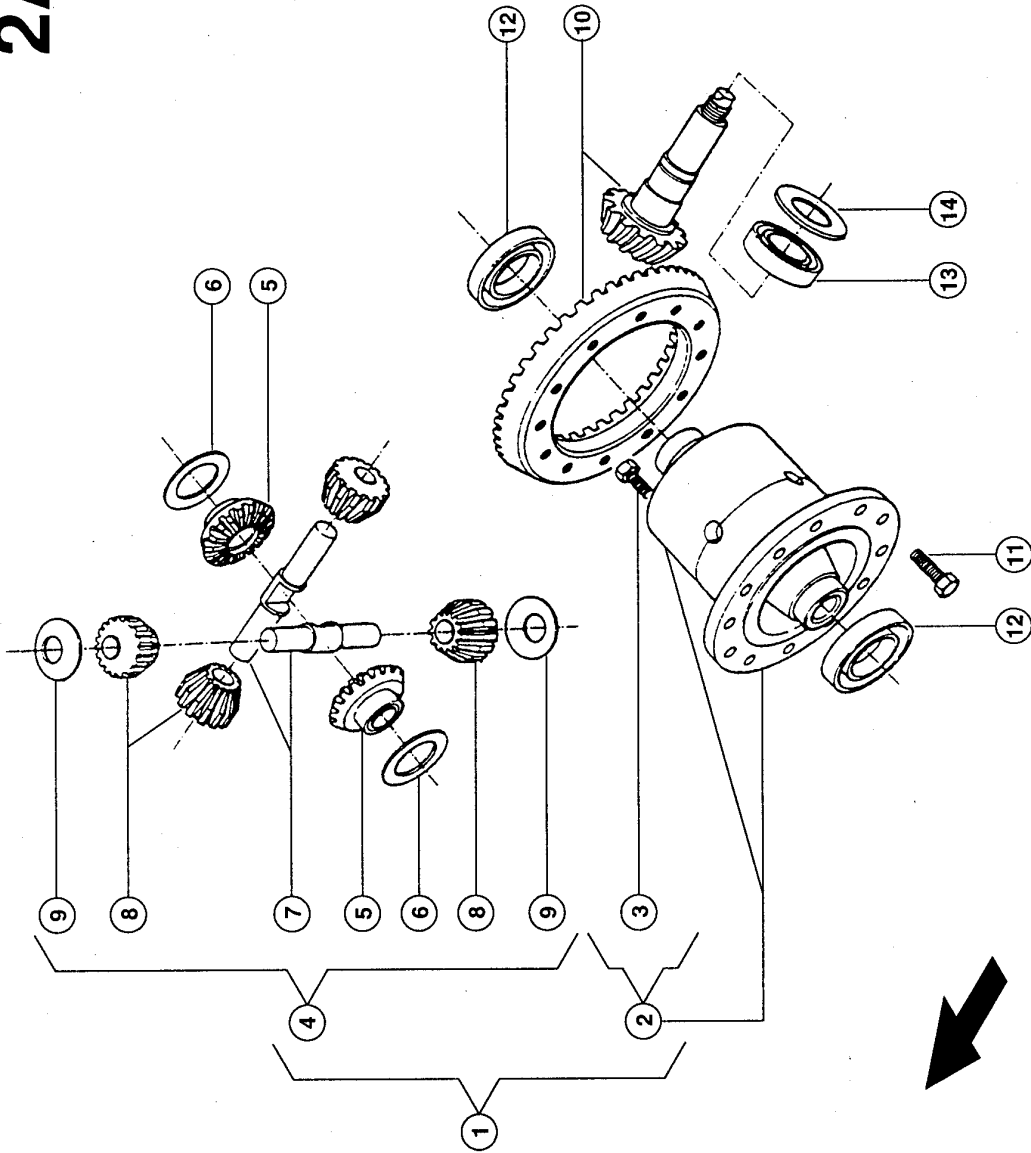
Pos.	Part No.	Description	Dimension	Quantity	Conditions
1	00 0324 671 0	GROUND DRIVE		1	2)
1	00 0324 672 0	GROUND DRIVE		1	3)
2	00 0324 400 0	HOUSING		1	2)
2	00 0324 432 0	HOUSING		1	3)
3	00 0324 411 0	DIFFERENTIAL		1	4)
4	00 0324 669 0	HOUSING		1	
5	00 0324 392 0	SEALING COMPOUND		1	
6	00 0324 401 0	FITTING PIN		4	
7	00 0324 402 0	NUT		2	
8	00 0324 403 0	SPACER RING		1	5)
9	00 0324 404 0	BEARING		1	
10	00 0324 405 0	GASKET		1	
11	00 0324 406 0	FORK PIECE		1	6)
14	00 0324 670 0	NUT		1	
15	00 0324 409 0	SPRING PIN		2	
16	00 0324 410 0	THREADED CAP		4	
17	00 0324 381 0	SEALING COMPOUND		1	
18	00 0324 640 0	SCREW PLUG		1	
19	00 0324 641 0	DRAIN SCREW		1	
20	00 0324 000 0	SEAL RING		2	
21	00 0324 418 0	WHEEL SET		1	
22	00 0324 419 0	PIN		12	
23	00 0324 422 0	SHIM	SATZ=5 STUECK	1	
24	00 0324 421 0	BEARING		1	
25	00 0324 420 0	GLIDE BEARING		2	

1)	Remarks	POS. 12 (KPL.NR. BESTELLEN)
2)	Remarks	Front axle
3)	Remarks	HINTERACHSE
4)	Remarks	see illustration plate 202
5)	Remarks	Prestress bush
6)	Remarks	with Item 12

202

2A3

TPL60432 RANGER 940 GX



108625

DIFFERENTIAL

Pos.	Part No.	Description	Dimension	Quantity	Conditions
1	00 0324 411 0	DIFFERENTIAL		1	
2	00 0324 412 0	HOUSING CPL.		1	
3	00 0324 413 0	BOLT		8	
4	00 0324 414 0	BEVEL GEAR SET		1	
6	00 0324 415 0	THRUST WASHER		2	
7	00 0324 416 0	SHAFT		2	
9	00 0324 417 0	THRUST WASHER		4	

Thank you so much for reading.
Please click the “Buy Now!”
button below to download the
complete manual.



After you pay.

You can download the most
perfect and complete manual in
the world immediately.

Our support email:

ebooklibonline@outlook.com