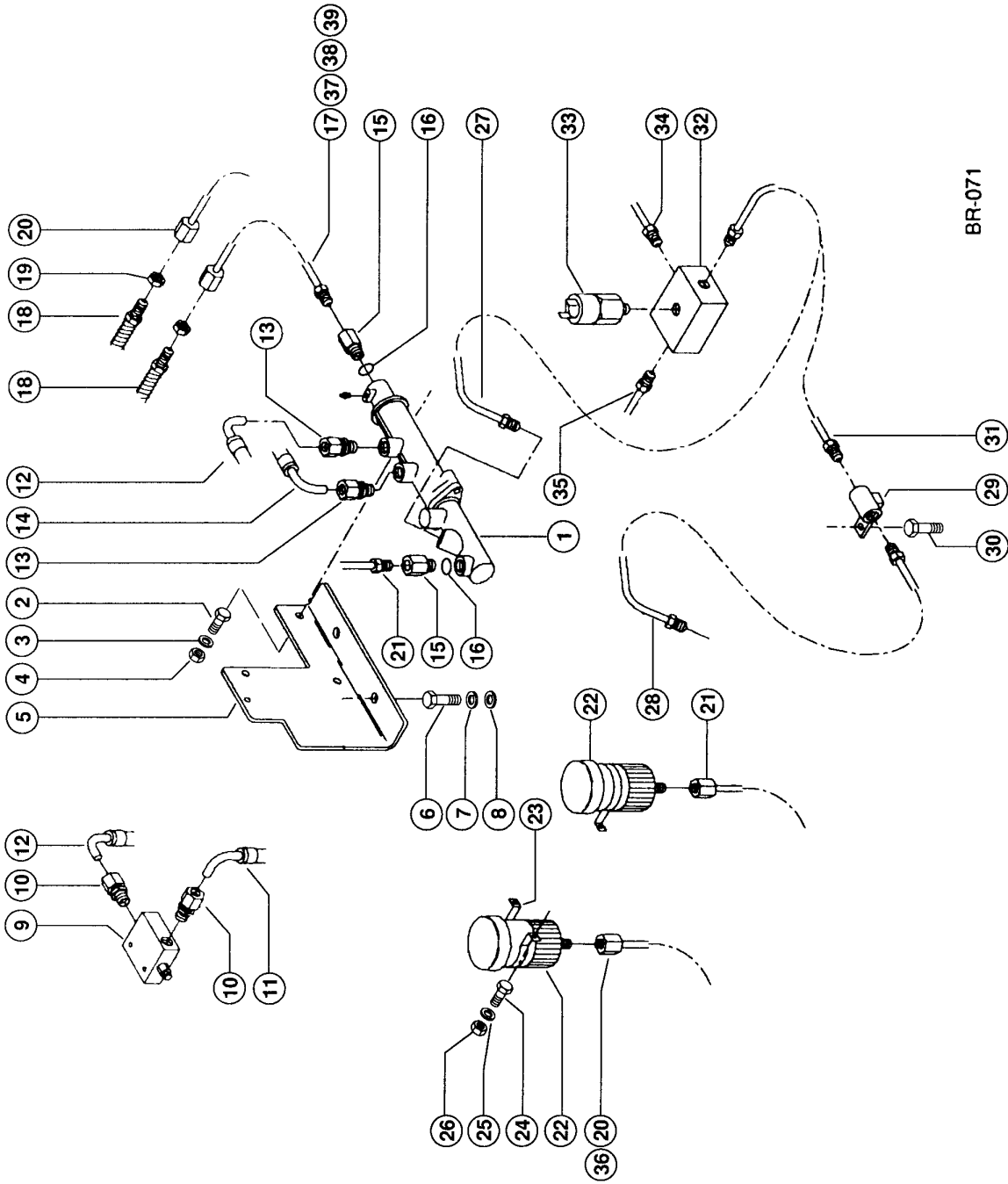


100

1A1

Ranger 920



BR-071

CLAAS

BRAKE CIRCUIT 1)

Pos.	Part No.	Description	Dimension	Quantity	Conditions
1	00 0310 026 0	TRANSMITT.CYL.ASS		1	2)
2	00 0320 125 0	SCREW	M10X30	1	
3	00 0320 234 0	WASHER	M10	2	
4	00 0238 316 0	LOCK NUT	M10	4	
5	00 0326 339 0	BRACKET		1	
6	00 0236 056 0	HEXAGON HEAD BOLT	M12X25	2	
7	00 0320 194 0	SPRING WASHER	M12	2	
8	00 0320 235 0	WASHER	M12	2	
9	00 0324 135 0	PRESS.REDUCER VAL		1	3)
9	00 0315 572 0	SEAL KIT		1	
10	00 0326 454 0	ADAPTER	L12 E-G	2	
11	00 0326 517 0	HOSE		1	
12	00 0326 539 0	HOSE		1	
13	00 0326 450 0	ADAPTER	SDS-S10XM16X1, 5-TYPE E	1	
14	00 0326 518 0	HOSE		1	
15	00 0326 193 0	ADAPTER	I-M12X1,5 - A-A-M14X1,5	2	
16	00 0321 446 0	SEAL RING		2	
17	00 0326 279 0	BRAKE PIPE	6X?X700-0	1	
18	00 0326 490 0	BRAKE HOSE		1	
19	00 0326 392 0	NUT	M12X1	4	
20	00 0326 277 0	BRAKE PIPE	6X?X1835-0	1	
21	00 0326 278 0	BRAKE PIPE	6X?X950-0	1	
22	00 0324 140 0	CONTAINER		2	
23	00 0326 482 0	CLAMP		2	
24	00 0320 102 0	HEXAGON HEAD SCREW	M 5X16	4	
25	00 0320 189 0	SPRING WASHER	M05	4	
26	00 0320 315 0	NUT	M.5	4	
27	00 0326 268 0	BRAKE PIPE		1	4)
28	00 0326 282 0	BRAKE PIPE		1	5)
29	00 0326 272 0	CONNECTION		1	5)
30	00 0320 120 0	SCREW	M8X30	1	5)
31	00 0326 283 0	BRAKE PIPE	8X?X710-0	1	5)
32	00 0326 259 0	DISTRIBUTOR BLOCK	3 X B-I-M14X1,5 + 1/8 1 NP	1	
33	00 0324 048 0	PRESSURE SWITCH	L=46/ SW 24	1	6)
33	00 0342 492 0	PRESSURE SWITCH	L=46/ SW 24	1	7)
33	00 0342 084 0	REDUCING ADAPTER		1	8)
34	00 0326 264 0	BRAKE PIPE	8X?X200-2	1	
35	00 0326 265 0	BRAKE PIPE		1	
36	00 0326 444 0	PIPE CLAMP		1	
37	00 0326 443 0	PIPE CLAMP		1	
38	00 0320 115 0	SCREW	M6X10	2	
39	00 0320 190 0	WASHER	M06	2	

1)	Remarks	with Ranger 920
2)	Remarks	see illustration plate 102
3)	Remarks	23 bar
4)	Remarks	to No. 51000011
5)	Remarks	from No. 51000012
6)	Remarks	5 bar, see illustration plate 502
7)	Remarks	22 bar

BRAKE CIRCUIT 1)

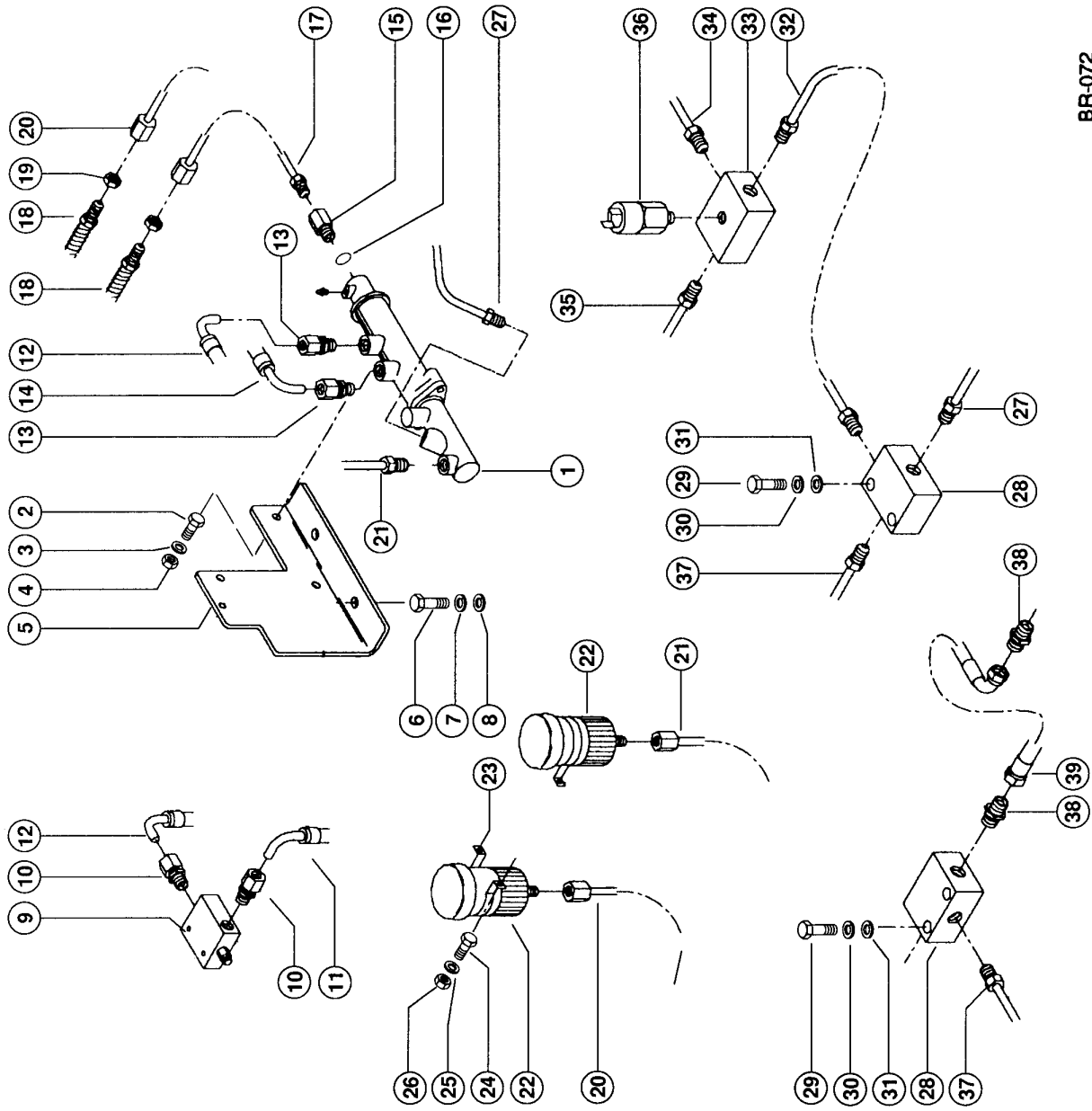
8) Remarks

for 22 bar

101

1A2

Ranger 960-970



BR-072

CLAAS

BRAKE CIRCUIT 1)

Pos.	Part No.	Description	Dimension	Quantity	Conditions
1	00 0324 046 0	TRANSMITT.CYL.ASS		1	2)
2	00 0320 125 0	SCREW	M10X30	1	
3	00 0320 234 0	WASHER	M10	2	
4	00 0238 316 0	LOCK NUT	M10	4	
5	00 0326 339 0	BRACKET		1	
6	00 0236 056 0	HEXAGON HEAD BOLT	M12X25	2	
7	00 0320 194 0	SPRING WASHER	M12	2	
8	00 0320 235 0	WASHER	M12	2	
9	00 0324 135 0	PRESS.REDUCER VAL		1	3)
9	00 0315 572 0	SEAL KIT		1	
10	00 0326 454 0	ADAPTER	L12 E-G	2	
11	00 0326 545 0	HOSE		1	
12	00 0326 539 0	HOSE		1	
13	00 0326 450 0	ADAPTER	SDS-S10XM16X1, 5-TYPE E	1	
14	00 0326 541 0	HOSE		1	
15	00 0326 193 0	ADAPTER	I-M12X1,5 - A-A-M14X1,5	2	
16	00 0321 446 0	SEAL RING		2	
17	00 0326 288 0	BRAKE PIPE	6X?X420-0	1	
18	00 0326 490 0	BRAKE HOSE		1	
19	00 0326 392 0	NUT	M12X1	4	
20	00 0326 287 0	BRAKE PIPE	6X?X1995-0	1	
21	00 0326 291 0	BRAKE PIPE	8X?X1350-0	1	
22	00 0324 140 0	CONTAINER		2	
23	00 0326 482 0	CLAMP		2	
24	00 0320 102 0	HEXAGON HEAD SCREW	M 5X16	4	
25	00 0320 189 0	SPRING WASHER	M05	4	
26	00 0320 315 0	NUT	M.5	4	
27	00 0326 286 0	BRAKE PIPE		1	
28	00 0326 256 0	DISTRIBUTOR BLOCK	3 X B-I-M14X1,5	2	
29	00 0324 996 0	HEXAGON HEAD SCREW	M8X35	3	
30	00 0320 191 0	SPRING WASHER	M08	3	
31	00 0320 233 0	WASHER	M08	3	
32	00 0311 845 0	BRAKE PIPE	8X?X1100-?	1	4)
32	00 0326 289 0	BRAKE PIPE		1	5)
33	00 0326 259 0	DISTRIBUTOR BLOCK	3 X B-I-M14X1,5 + 1/8 NP	1	
34	00 0326 264 0	BRAKE PIPE	8X?X200-2	1	
35	00 0326 265 0	BRAKE PIPE		1	
36	00 0324 048 0	PRESSURE SWITCH	L=46/ SW 24	1	6)
36	00 0342 492 0	PRESSURE SWITCH	L=46/ SW 24	1	7)
36	00 0342 084 0	REDUCING ADAPTER		1	8)
37	00 0326 285 0	BRAKE PIPE		1	
38	00 0326 449 0	ADAPTER	S08 E-M14	4	
39	00 0326 489 0	BRAKE HOSE	1SN 6 P90(S08)P(S08) 370	2	

1) Remarks with Ranger 960,970

2) Remarks see illustration plate 102

3) Remarks 23 bar

4) Remarks from No. 51000088
from No. 51600073

BRAKE CIRCUIT 1)

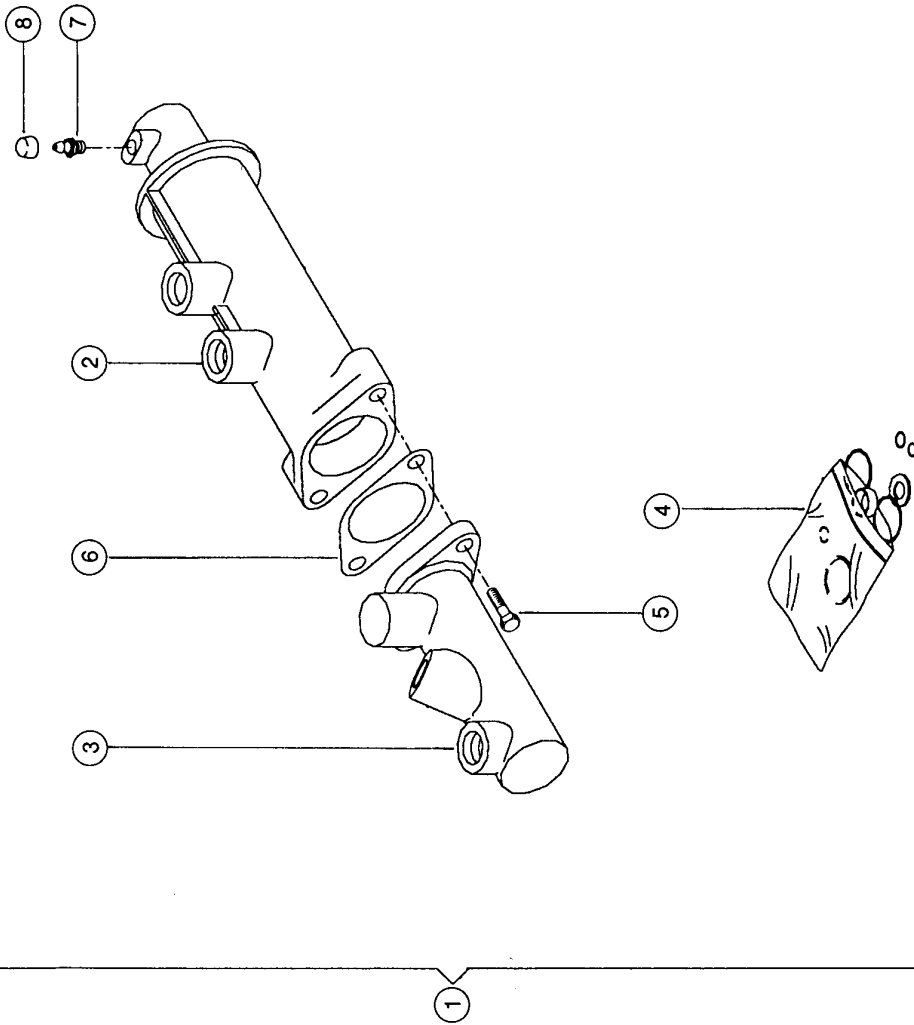
5) Remarks	to No. 51000087 to No. 51600072
6) Remarks	5 bar, see illustration plate 502
7) Remarks	22 bar
8) Remarks	for 22 bar

102

1A3

Ranger 920 – 970

BR-073



CLAAS

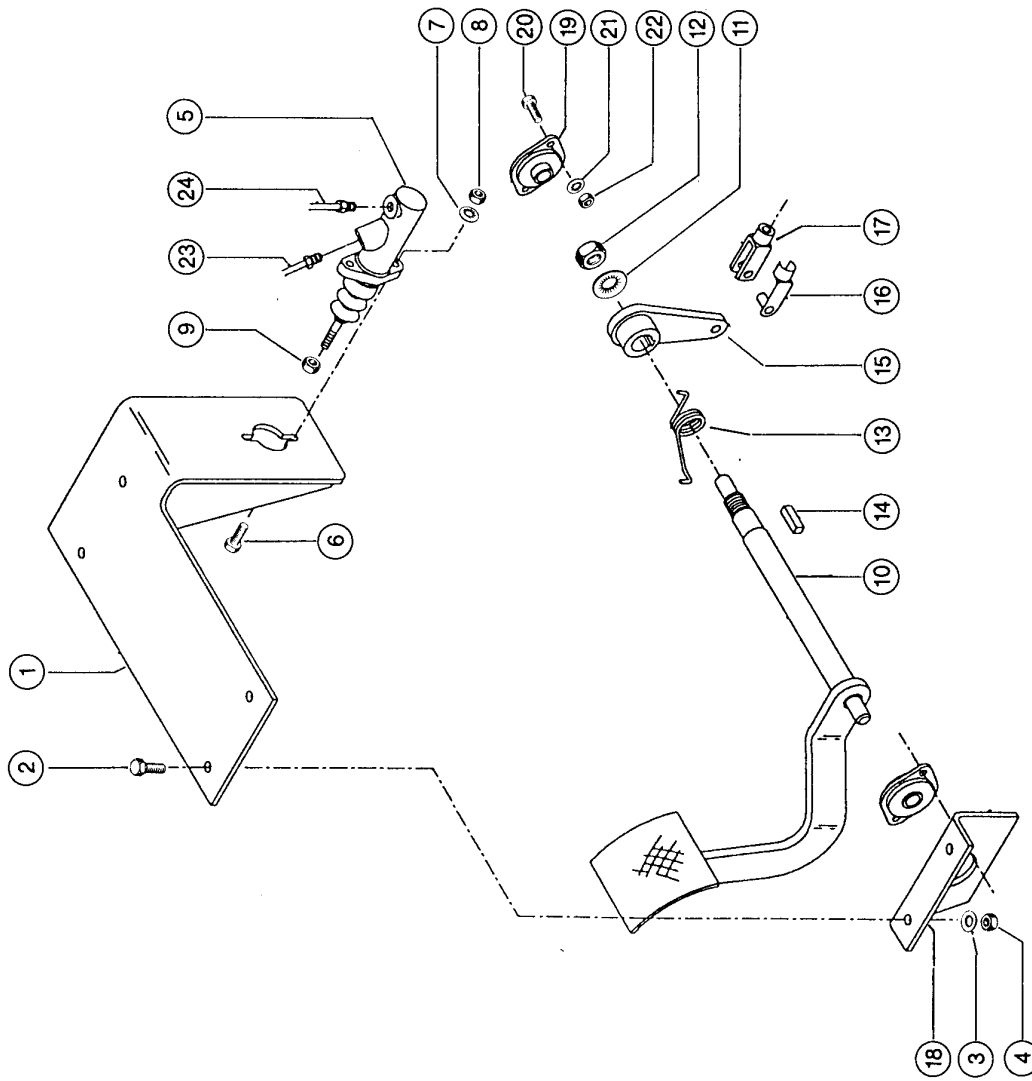
BRAKE BOOSTER

Pos.	Part No.	Description	Dimension	Quantity	Conditions
1	00 0324 046 0	TRANSMITT.CYL.ASS		1	1)
1	00 0310 026 0	TRANSMITT.CYL.ASS		1	2)
2	00 0326 158 0	BRAKE EFF.CONTR.		1	
3	00 0326 159 0	MASTER CYLINDER		1	1)
3	00 0327 018 0	MASTER CYLINDER	7/8"	1	2)
4	00 0326 154 0	SEAL KIT		1	1)
4	00 0327 027 0	SEAL KIT		1	2)
5	00 0326 160 0	SCREW		2	
6	00 0326 161 0	SHIM	0,5 STAINLESS	1	3)
7	00 0326 162 0	GREASE NIPPLE		1	
8	00 0326 163 0	GUARD CAP		1	
1)	Remarks	Ranger 960, 970			
2)	Remarks	Ranger 920			
3)	Remarks	0.5 mm thick			

103

1B1

Ranger 920



BR-070

CLAAS

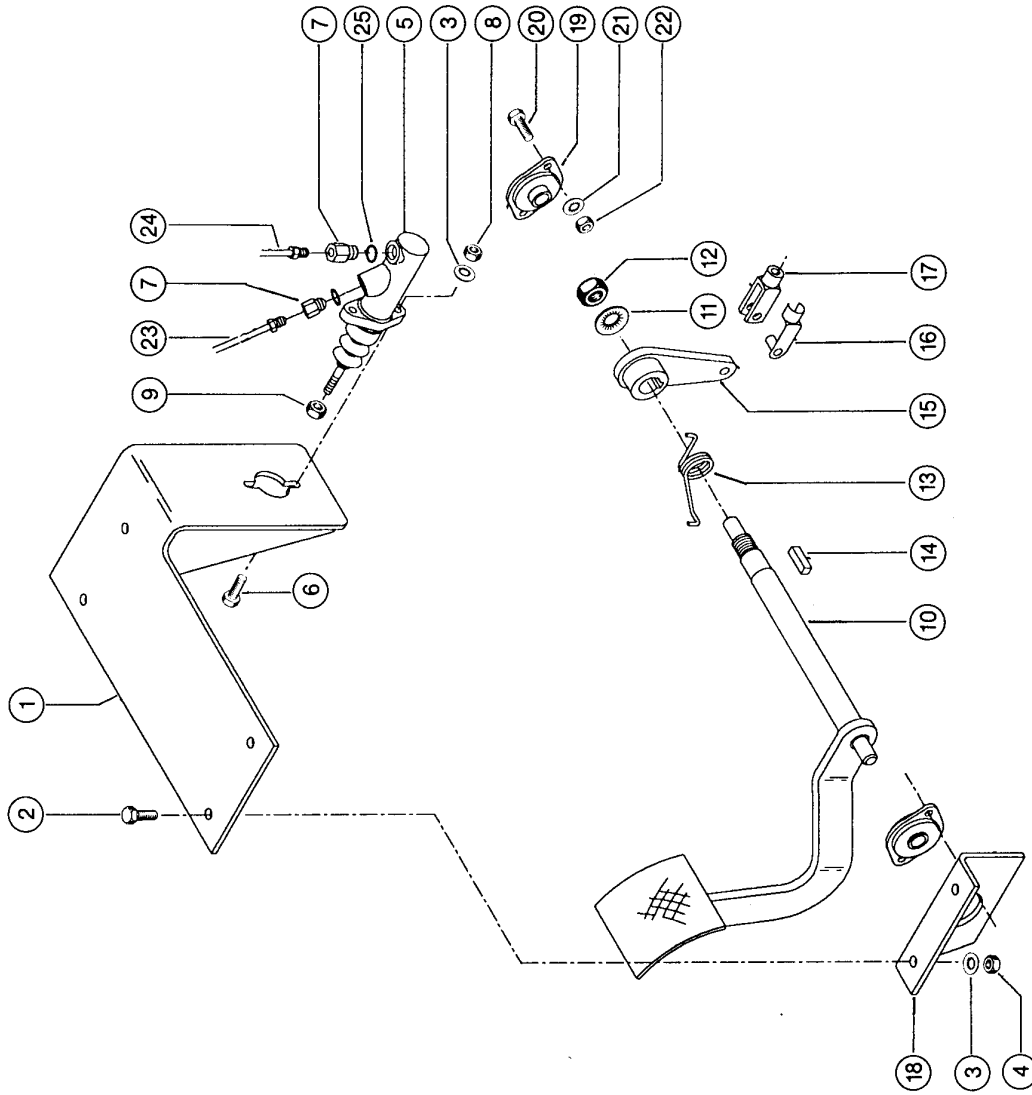
BRAKE PEDAL 1)

Pos.	Part No.	Description	Dimension	Quantity	Conditions
1	00 0326 269 0	BRACKET		1	2)
1	00 0326 276 0	SUPPORT		1	3)
2	00 0320 125 0	SCREW	M10X30	4	
3	00 0320 192 0	WASHER	M10	4	
4	00 0320 318 0	NUT	M10	4	
5	00 0324 049 0	BRAKE CYLINDER		1	
5	00 0324 050 0	REPAIR KIT		1	4)
6	00 0320 120 0	SCREW	M8X30	2	
7	00 0320 191 0	SPRING WASHER	M08	2	
8	00 0320 317 0	NUT	M 8	2	
9	00 0320 365 0	NUT		2	
10	00 0326 271 0	BRAKE PEDAL		1	2)
10	00 0326 274 0	BRAKE PEDAL		1	3)
11	00 0320 237 0	WASHER	M20	1	
12	00 0237 521 0	HEX.NUT	M20	1	
13	00 0326 480 0	TORSION SPRING		1	
14	00 0326 419 0	PARALLEL KEY	8X7 X25 ERS.D. 600500451	1	
15	00 0326 263 0	LEVER ARM		1	
16	00 0326 194 0	PIN		1	
17	00 0326 195 0	COUPLING PIECE		1	2)
17	00 0326 275 0	FORK HEAD		1	3)
18	00 0326 261 0	BEARING BRACKET		1	2)
18	00 0326 290 0	BEARING BRACKET		1	3)
19	00 0326 260 0	FLANGE BEARING		2	
20	00 0320 110 0	SCREW	M6X20	4	
21	00 0320 190 0	WASHER	M06	4	
22	00 0323 222 0	NUT	M 6	4	
23	00 0326 280 0	BRAKE PIPE	6X?X550-0	1	
24	00 0326 281 0	BRAKE PIPE	6X?X650-0	1	

1) Remarks	with Ranger 920
2) Remarks	to No. 51000013
3) Remarks	from No. 51000014
4) Remarks	for Item 5

104

1B2



BR-070A

Ranger 960—970

CLAAS

BRAKE PEDAL 1)

Pos.	Part No.	Description	Dimension	Quantity	Conditions
1	00 0326 262 0	SUPPORT		1	
2	00 0320 125 0	SCREW	M10X30	4	
3	00 0320 192 0	WASHER	M10	6	
4	00 0320 318 0	NUT	M10	4	
5	00 0324 144 0	BRAKE CYLINDER		1	
5	00 0324 047 0	SEAL KIT		1	2)
6	00 0237 874 0	HEXAGON HEAD BOLT	M10X35	2	
7	00 0326 193 0	ADAPTER	I-M12X1,5 - A-A-M14X1,5	2	
8	00 0238 316 0	LOCK NUT	M10	2	
9	00 0320 285 0	SECURING NUT		2	
10	00 0326 271 0	BRAKE PEDAL		1	3)
10	00 0326 274 0	BRAKE PEDAL		1	4)
11	00 0320 237 0	WASHER	M20	1	
12	00 0237 521 0	HEX.NUT	M20	1	
13	00 0326 480 0	TORSION SPRING		1	
14	00 0326 419 0	PARALLEL KEY	8X7 X25 ERS.D. 600500451	1	
15	00 0326 263 0	LEVER ARM		1	
16	00 0322 768 0	PIN		1	
17	00 0326 483 0	FORK HEAD		1	
18	00 0326 273 0	BEARING BRACKET		1	3)
18	00 0326 290 0	BEARING BRACKET		1	4)
19	00 0326 260 0	FLANGE BEARING		2	
20	00 0320 110 0	SCREW	M6X20	4	
21	00 0320 190 0	WASHER	M06	4	
22	00 0323 222 0	NUT	M 6	4	
23	00 0326 280 0	BRAKE PIPE	6X?X550-0	1	
24	00 0326 281 0	BRAKE PIPE	6X?X650-0	1	
25	00 0321 446 0	SEAL RING		2	

1) Remarks with Ranger 960,970

2) Remarks for Item 5

3) Remarks to No. 51600012

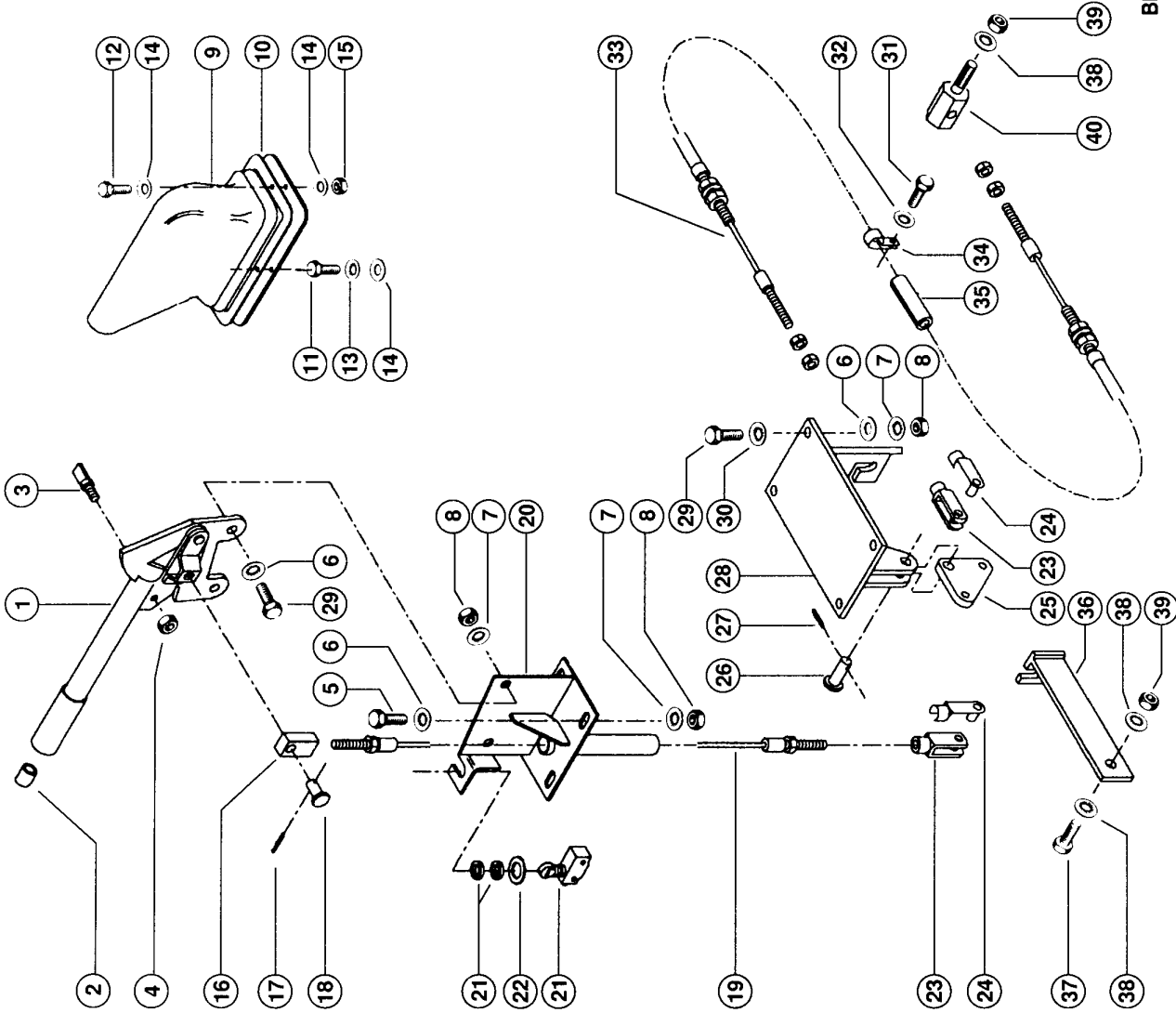
4) Remarks from No. 51600013

105

1C1

Ranger 920-970

BR-074



CLAAS

PARKING BRAKE

Pos.	Part No.	Description	Dimension	Quantity	Conditions
1	00 0321 082 0	HAND BRAKE LEVER		12	
2	00 0322 357 0	BUTTON		1	
3	00 0321 285 0	BEARING BOLT		1	
4	00 0320 295 0	NUT	M 6	1	
5	00 0236 200 0	HEXAGON HEAD BOLT	M8X20	4	
6	00 0326 403 0	WASHER		4	
7	00 0320 191 0	SPRING WASHER	M08	4	
8	00 0320 317 0	NUT	M 8	4	
9	00 0322 988 0	BELLOWS		1	
10	00 0322 680 0	HOLDING DEVICE		1	
11	00 0215 030 0	HEXAGON HEAD BOLT	M 5X25	3	
12	00 0320 102 0	HEXAGON HEAD SCREW	M 5X16	1	
13	00 0320 189 0	SPRING WASHER	M05	3	
14	00 0320 231 0	WASHER	M05	5	
15	00 0320 294 0	NUT	M 5	1	
16	00 0326 208 0	THREADED PIECE		1	
17	00 0320 269 0	SPLIT PIN		1	
18	00 0321 465 0	PIN	9,45X33,32X2,38X28,581		
19	00 0324 137 0	CABLE	4,0 X 340 (M08)	1	
20	00 0326 270 0	SUPPORT		1	
21	00 0322 941 0	SWITCH		1	
22	00 0320 235 0	WASHER	M12	1	
23	00 0326 439 0	FORK HEAD		2	
24	00 0320 658 0	SPRING CLIP		2	
25	00 0326 266 0	REVERSING LEVER		1	
26	00 0326 207 0	PIN	B-10X30X3,2 ERS.D. 21453	1	
27	00 0325 065 0	SPLIT PIN	3,2 X 25	1	
28	00 0326 267 0	BRACKET		1	
29	00 0320 119 0	SCREW	M8X25	6	
30	00 0326 437 0	WASHER		4	
31	00 0320 192 0	WASHER	M10	1	
32	00 0326 395 0	SCREW	M20X20	1	
33	00 0324 138 0	CABLE	4,0 X 2450 MM LG. (M08)	1	1)
33	00 0324 154 0	CABLE	4,0 X 2820 MM (M08)	1	2)
34	00 0325 043 0	CLAMP		1	
35	00 0326 284 0	CABLE CLAMP		1	
36	00 0326 257 0	BRACKET		1	
37	00 0320 125 0	SCREW	M10X30	1	
38	00 0326 405 0	WASHER		3	
39	00 0326 399 0	NUT		2	
40	00 0326 258 0	PIN		1	

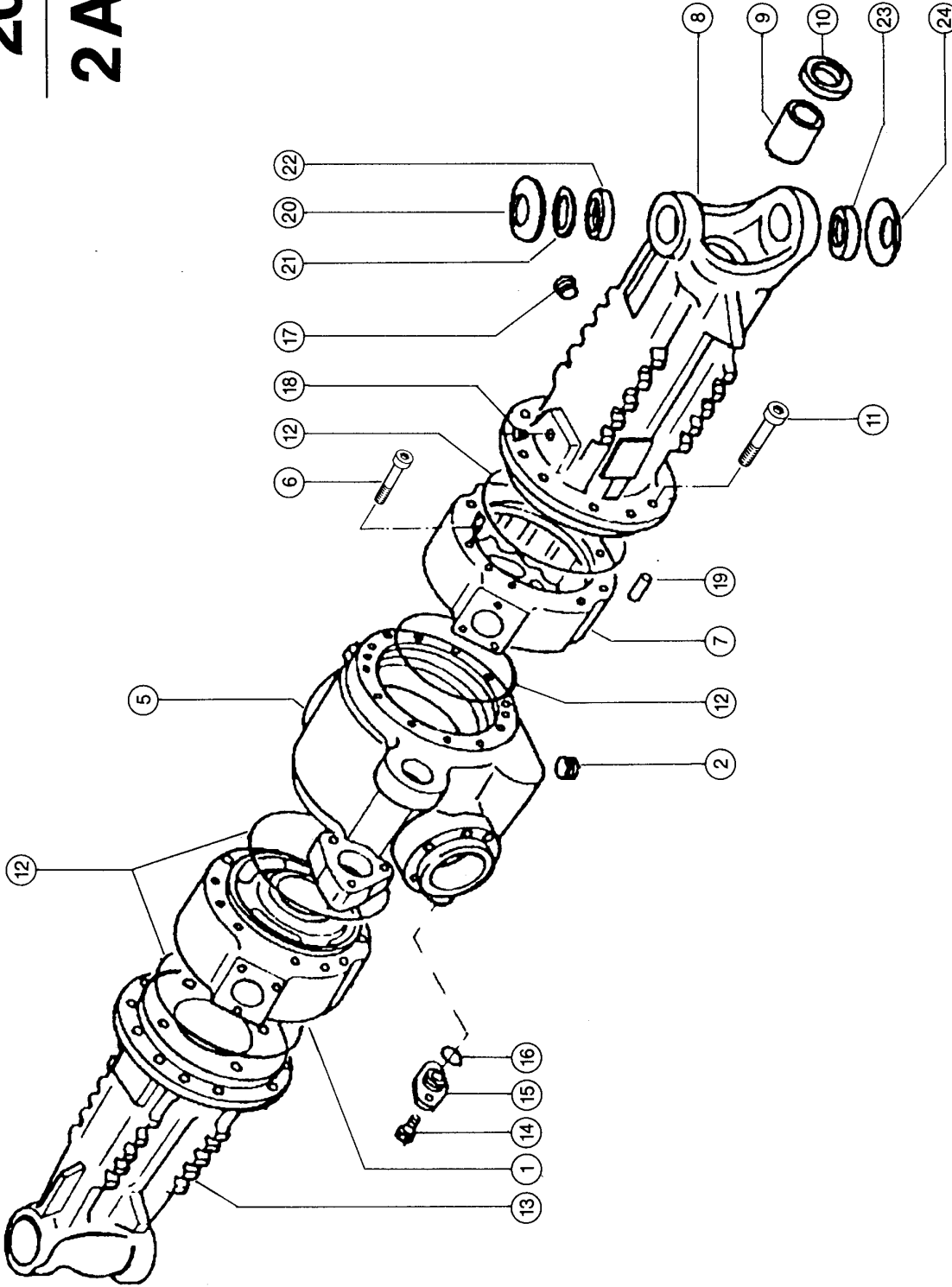
1) Remarks with Ranger 920

2) Remarks with Ranger 960,970

200

2A2

Ranger 920



AX-187

CLAAS

118844

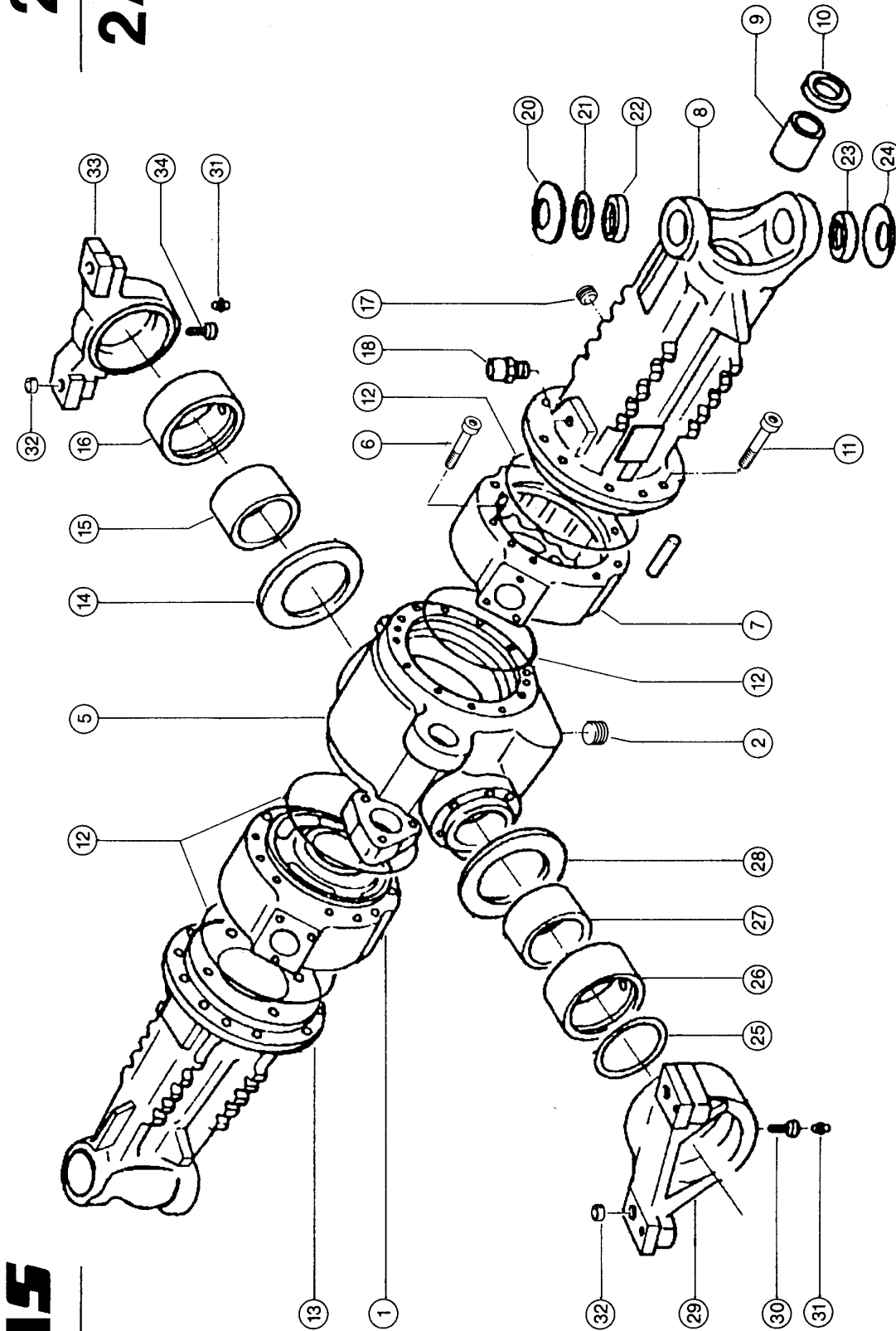
FRONT AXLE 1)

Pos.	Part No.	Description	Dimension	Quantity	Conditions
	00 0326 239 0	FRONT AXLE		1	2)
1	00 0326 020 0	BRAKE HOUSING		12	3)
2	00 0322 494 0	PLUG	M30X2- ERS.D.6000103257	1	
5	00 0326 022 0	DIFFERENT.HOUSING		1	
6	00 0326 023 0	SCREW		4	
7	00 0326 024 0	BRAKE HOUSING		1	4)
8	00 0326 025 0	AXLE HOUSING R.H.		1	
9	00 0321 471 0	BUSHING	C 42 46 32P	2	
10	00 0321 556 0	SEAL RING	42X62X14	2	
11	00 0326 026 0	SOCKET HEAD SCREW		24	
12	00 0326 027 0	O-RING	228,19X3,53 NBR70	4	
13	00 0326 028 0	AXLE HOUSING L.H.		1	
14	00 0321 838 0	SCREW		2	
15	00 0326 029 0	COVER		1	
16	00 0326 030 0	O-RING		1	
17	00 0324 051 0	OIL PLUG	M22X1.5	1	
18	00 0326 401 0	BREATHER	M10X1	1	
19	00 0326 469 0	PIN	D10X25	2	
20	00 0320 057 0	WASHER	71X36X2,5	2	
21	00 0320 059 0	WASHER	ERS.D. 0342892.0	2	
22	00 0322 503 0	BUSHING	ERS.D.1135450.0	2	
23	00 0322 502 0	JOINT BEARING	GE28SX	2	
24	00 0320 056 0	WASHER	47,5 X 70	2	

1) Remarks	with Ranger 920
2) Remarks	KPL.
3) Remarks	left
4) Remarks	right

201

2A3



CLAAS

REAR AXLE 1)

Pos.	Part No.	Description	Dimension	Quantity	Conditions
	00 0326 240 0	REAR AXLE		1	2)
1	00 0326 084 0	BRAKE HOUSING		1	
2	00 0322 494 0	PLUG	M30X2- ERS.D.6000103257	1	
5	00 0326 085 0	AXLE HOUSING		1	
6	00 0326 023 0	SCREW		4	
7	00 0326 086 0	BRAKE HOUSING		1	
8	00 0326 087 0	BEAR. HOUSING R.H		1	
9	00 0321 471 0	BUSHING	C 42 46 32P	2	
10	00 0321 556 0	SEAL RING	42X62X14	2	
11	00 0326 026 0	SOCKET HEAD SCREW		24	
12	00 0326 027 0	O-RING	228,19X3,53 NBR70	4	
13	00 0326 088 0	BEAR. HOUSING L.H		1	
14	00 0326 089 0	THRUST WASHER	175-110.5-5	1	
15	00 0326 090 0	BUSHING	120-110-46	1	
16	00 0326 091 0	BUSHING	130-120-42	1	
17	00 0324 051 0	OIL PLUG	M22X1.5	1	
18	00 0321 469 0	BREATHER	M10X1	1	
20	00 0320 057 0	WASHER	71X36X2,5	2	
21	00 0320 059 0	WASHER	ERS.D. 0342892.0	2	
22	00 0322 503 0	BUSHING	ERS.D.1135450.0	2	
23	00 0322 502 0	JOINT BEARING	GE28SX	2	
24	00 0320 056 0	WASHER	47,5 X 70	2	
25	00 0326 093 0	O-RING	ERSETZT D. 02182550	1	
26	00 0326 094 0	BUSHING	135X125X42	1	
27	00 0326 095 0	BUSHING	W. ERS. D. 60 0010 3312	1	
28	00 0326 096 0	THRUST WASHER	175X115.5X5	1	
29	00 0326 097 0	BEARING SUPPORT		1	
30	00 0321 489 0	SOCKET		2	
31	00 0321 490 0	GREASE NIPPLE	M8X1-A ERS.D.1798380	2	
32	00 0321 488 0	BUSHING	30X21X16,5	4	
33	00 0326 098 0	BEARING SUPPORT		1	
34	00 0326 083 0	THRUST WASHER		1	

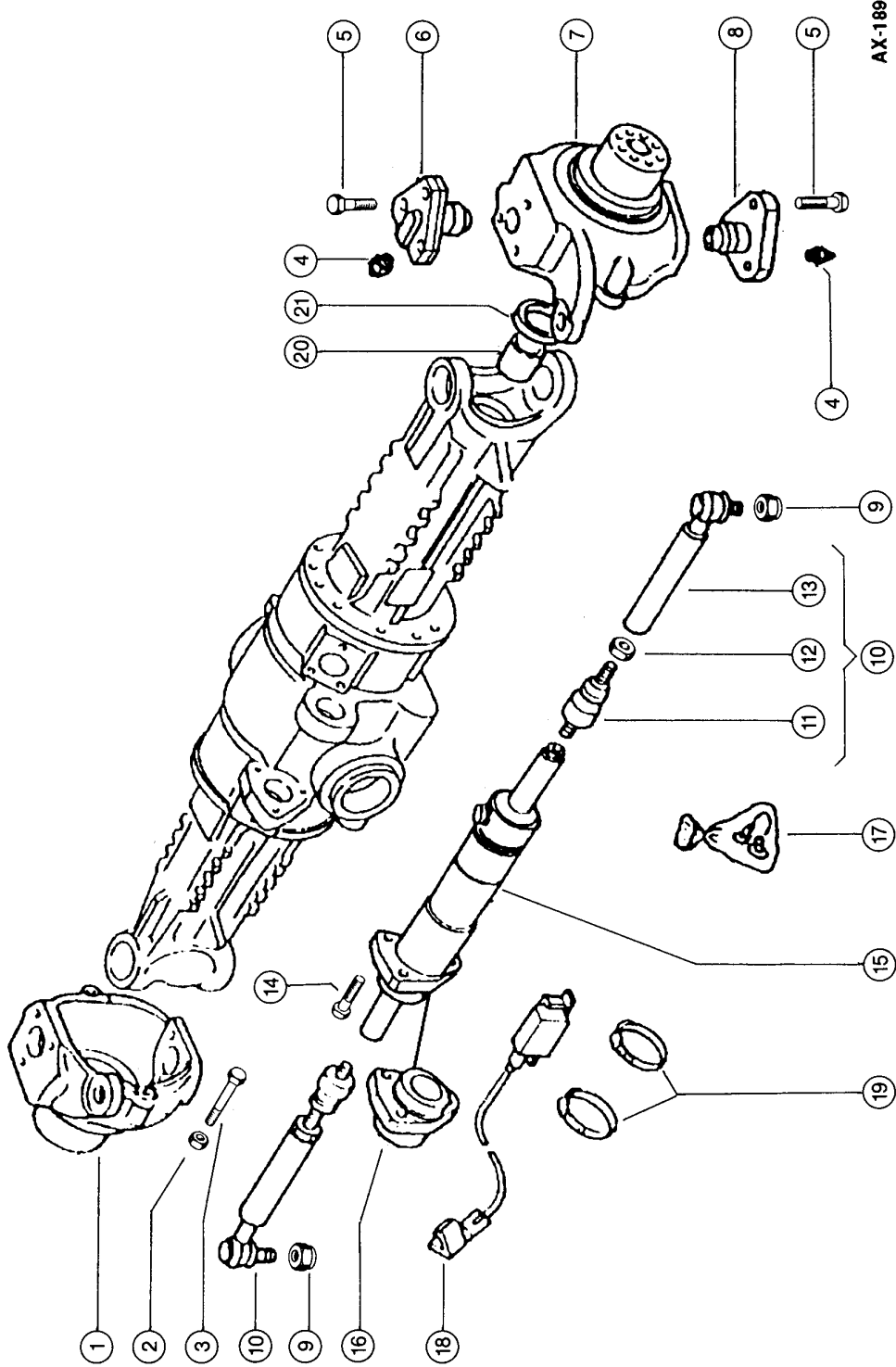
1) Remarks with Ranger 920

2) Remarks KPL.

202

2A4

Ranger 920



CLAAS

SWIVEL HOUSING AND STEERING CYLINDER, FR 1)

Pos.	Part No.	Description	Dimension	Quantity	Conditions
1	00 0326 031 0	HUB CARRIER		2	2)
2	00 0326 032 0	NUT	M16	4	
3	00 0326 033 0	SCREW	M16X100	4	3)
4	00 0320 772 0	GREASE NIPPLE	M6X1	4	
5	00 0326 001 0	HEX.HEAD BOLT	M14X2X35 ATBL	12	
6	00 0320 054 0	BEARING BOLT		2	
7	00 0326 034 0	HUB CARRIER		2	4)
8	00 0320 053 0	BEARING BOLT	W. ERS. D. 6000 103 322	2	
9	00 0326 035 0	NUT		2	
10	00 0326 936 0	STRUT ROD CPL.	.	2	
11	00 0324 053 0	BALL JOINT	ERS.D. 6000103325	1	
12	00 0326 036 0	NUT	ERS.D. 1138 834.0	1	
13	00 0324 054 0	STRUT ROD		1	
14	00 0326 037 0	SCREW	M12-45	3	
15	00 0324 055 1	STEER CYLINDER	85X38X200	1	5)
15	00 0324 055 0	CYLINDER		1	6)
15	00 0324 056 1	STEER CYLINDER	85X38X200	1	7)
15	00 0324 056 0	CYLINDER		1	8)
16	00 0326 038 0	CYLINDER HEAD		1	
17	00 0326 967 0	SEAL KIT		1	9)
17	00 0323 966 0	SEAL KIT		1	10)
18	00 0324 057 1	SENSOR		1	5)
18	00 0324 057 0	SENSOR		1	6)
18	00 0324 058 1	SENSOR		1	7)
18	00 0324 058 0	SENSOR		1	8)
19	00 0326 039 0	CLAMP		2	
20	00 0326 040 0	BUSH	W. ERS. D. 6000 103 015	2	
21	00 0324 059 0	SEAL RING	45X65X12	2	

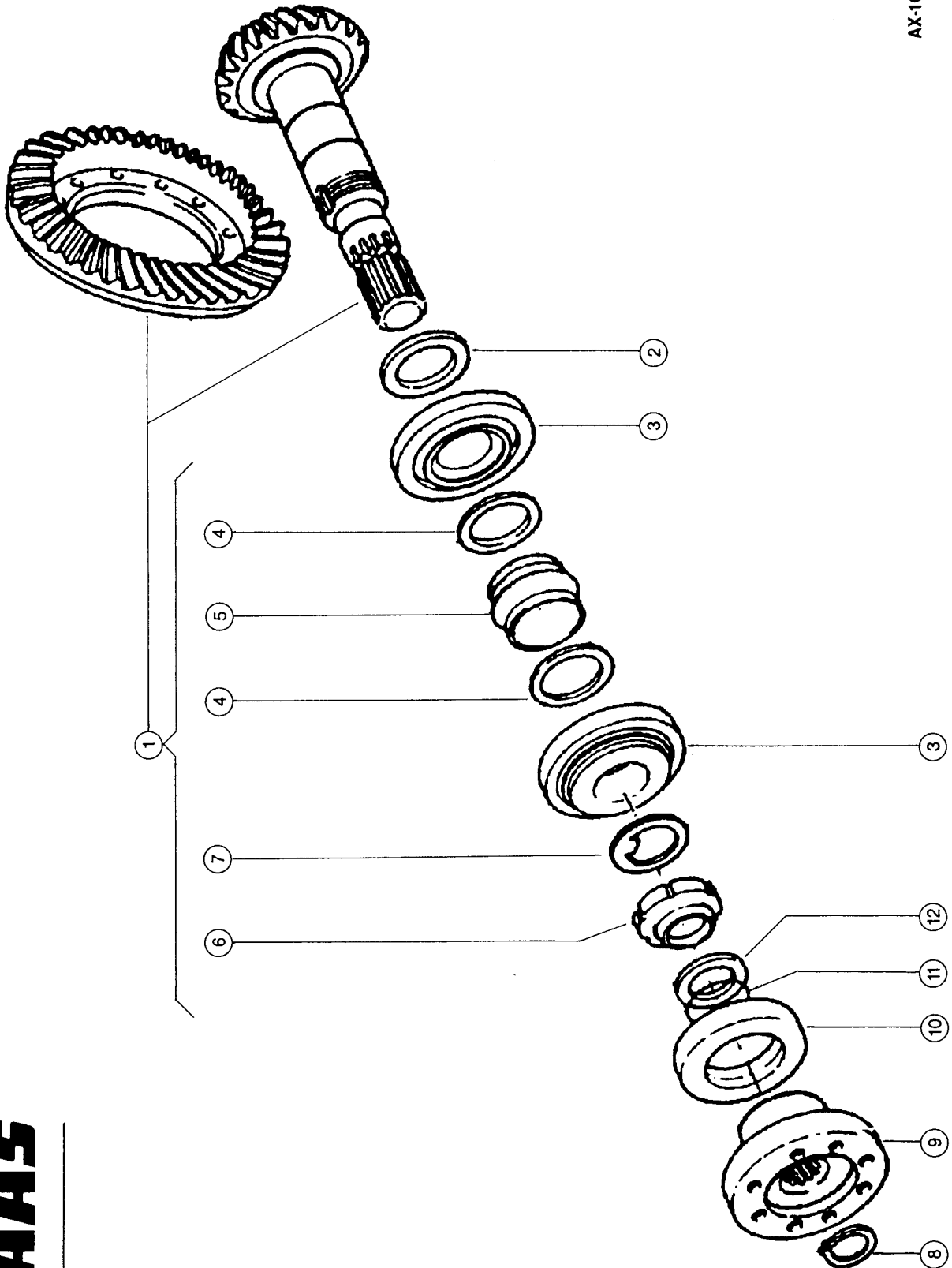
1)	Remarks	with Ranger 920
2)	Remarks	1 x front left hand side 1 x rear right hand side
3)	Remarks	m6x100
4)	Remarks	1 x front right hand side 1 x rear left hand side
5)	Remarks	from axle no. 359 front
6)	Remarks	to axle no. 358, front
7)	Remarks	from axle no. 357 rear
8)	Remarks	to axle no. 356, rear
9)	Remarks	from axle no. 359 front from axle no. 357 rear
10)	Remarks	to axle no. 358, front to axle no. 356, rear

203

2A5

Ranger 920

AX-169



CLAAS

Thank you so much for reading.
Please click the “Buy Now!”
button below to download the
complete manual.



After you pay.

You can download the most
perfect and complete manual in
the world immediately.

Our support email:

ebooklibonline@outlook.com