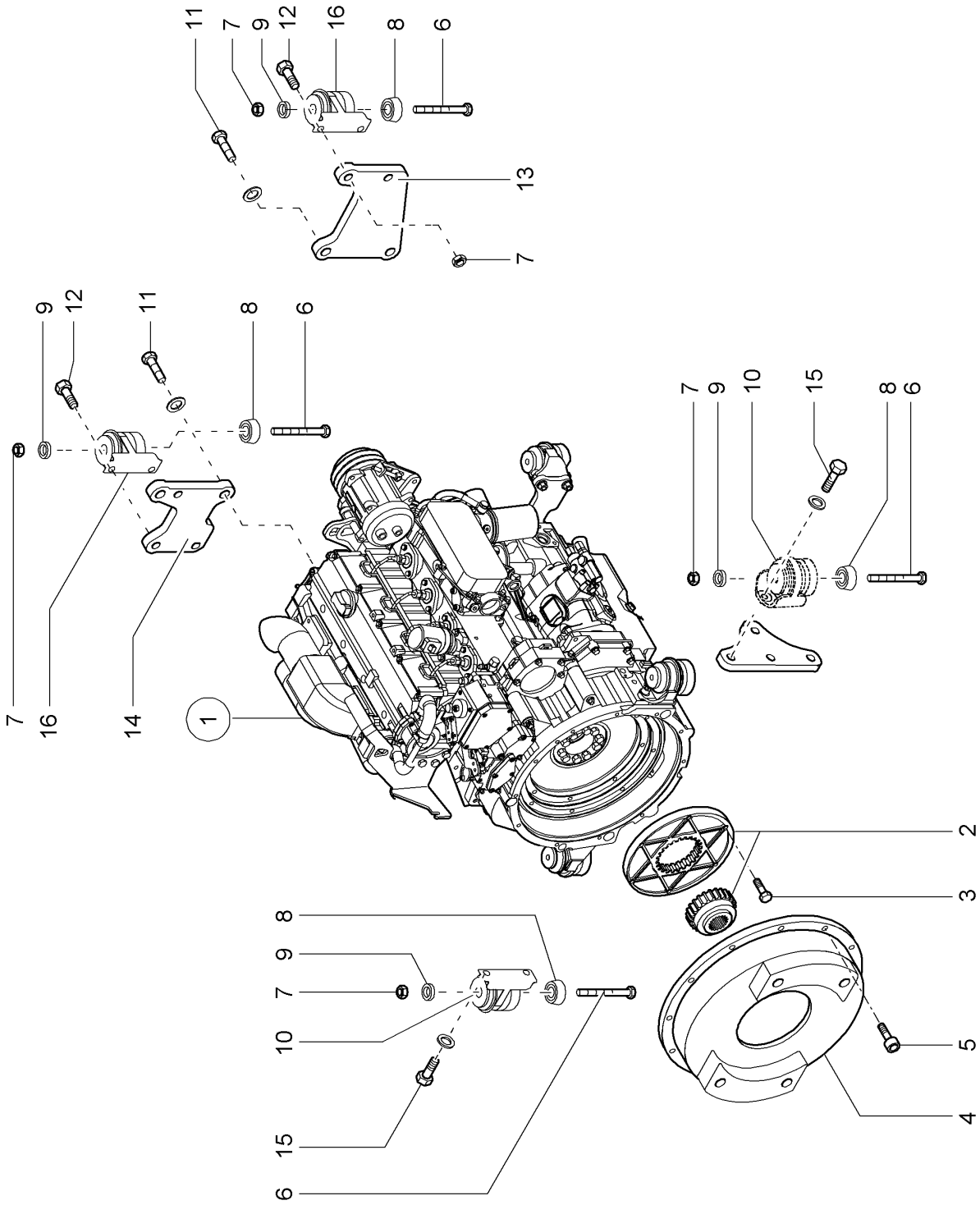


**100 ENGINE SUSPENSION 1)**

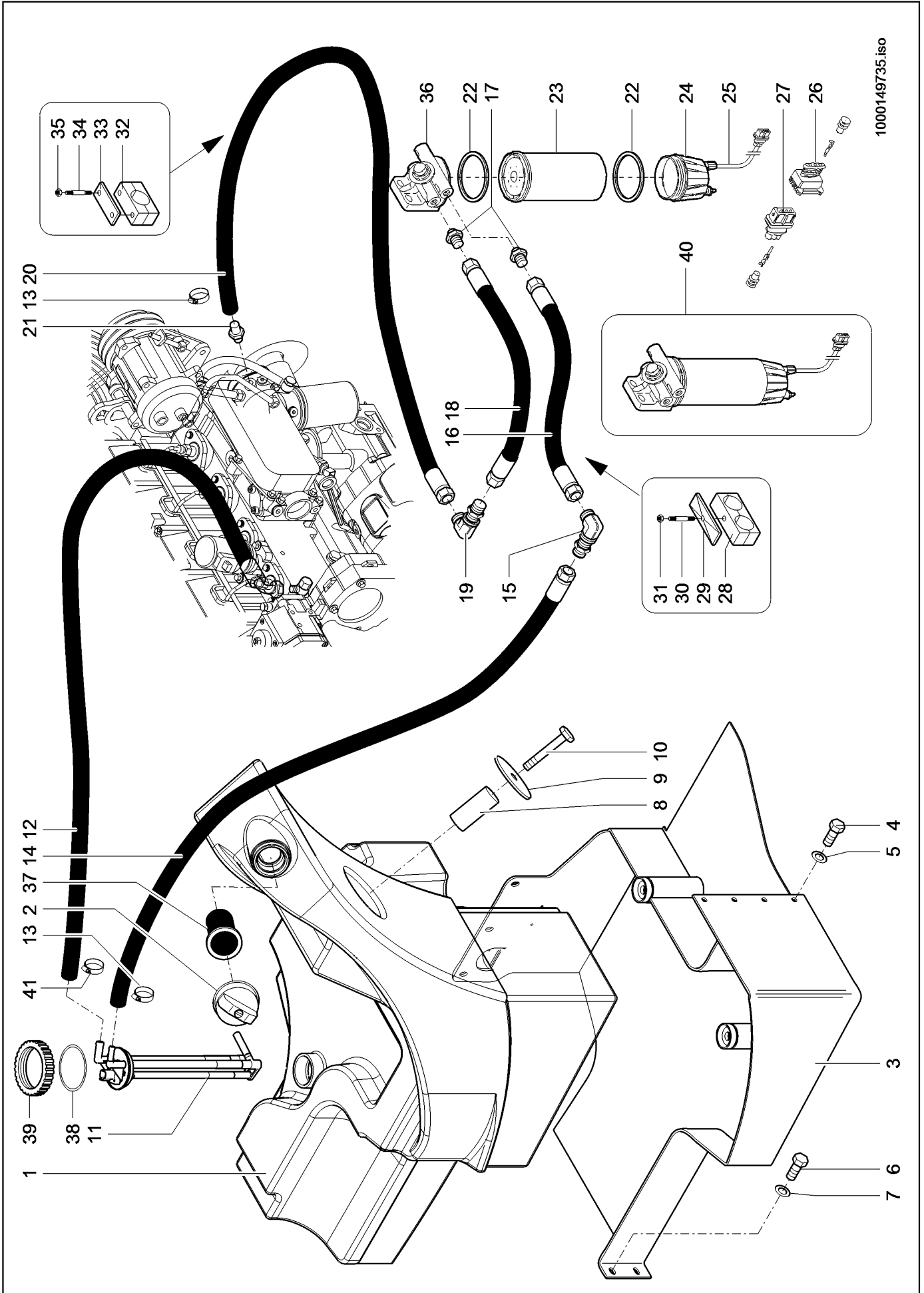
Pos.	Part No.	Description	Dimension	Quantity	Conditions
1	<b>00 1301 751 0</b>	DIESEL ENGINE	BF4M2012C 90 KW/2400MIN-	1	2)
2	<b>00 1300 828 0</b>	CLUTCH		1	
3	<b>00 0237 874 0</b>	HEXAGON HEAD BOLT	M10X35	8	
4	<b>00 1300 444 0</b>	FLANGE		1	
5	<b>00 0235 495 1</b>	SOCKET HEAD SCREW	M10X 25	12	
6	<b>00 0242 380 0</b>	HEXAGON HEAD BOLT	M12X120	4	
7	<b>00 0238 315 0</b>	HEXAGONAL NUT	M12	4	
8	<b>00 1301 651 0</b>	SPACER PIECE		4	
9	<b>00 1301 652 0</b>	WASHER		4	
10	<b>00 1301 630 0</b>	SHUT OFF PLATE		2	
11	<b>00 0237 573 0</b>	HEXAGON HEAD BOLT	M12X50	2	
12	<b>00 1301 650 0</b>	SOCKET HEAD SCREW	M12X40	2	
13	<b>00 1300 481 0</b>	BEARING PLATE		1	
14	<b>00 1300 364 0</b>	BEARING PLATE		1	
15	<b>77 0102 992 4</b>	HEXAGON HEAD SCREW		4	
16	<b>00 1301 870 0</b>	STAND		2	
17	<b>00 1302 286 1</b>	DIESEL ENGINE	TCD 2012 LO4 2V 88 KW/24	1	3)
<b>1)</b>	<b>Remarks</b>			88/90 KW	
<b>2)</b>	<b>Remarks</b>			90 KW	
<b>3)</b>	<b>Remarks</b>			88 KW	



**100 ENGINE SUSPENSION 1)**

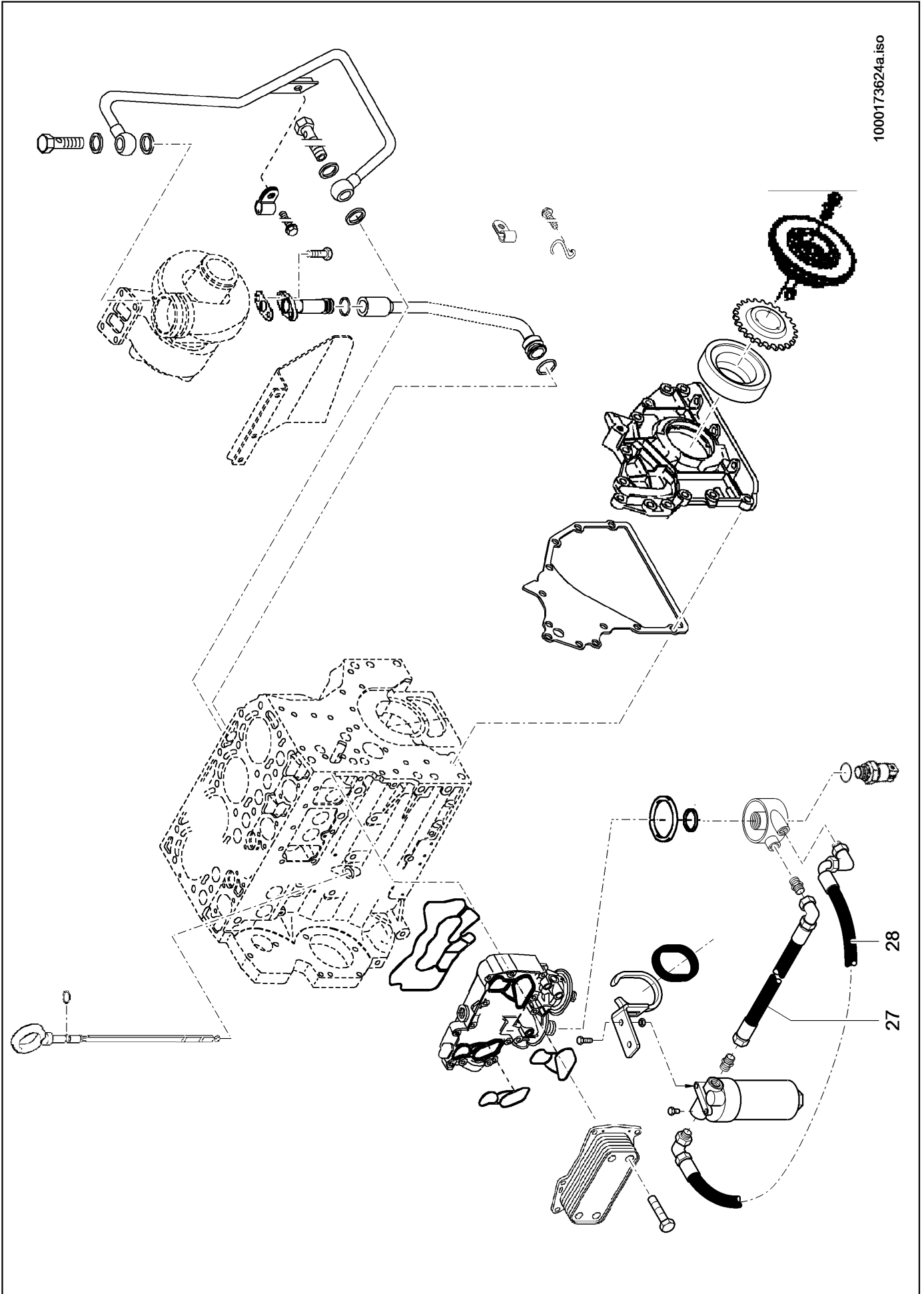
Pos.	Part No.	Description	Dimension	Quantity	Conditions
1	<b>00 1301 640 0</b>	DIESEL ENGINE	BF4M2012 75 KW/2400MIN-1	1	
2	<b>00 1300 828 0</b>	CLUTCH		1	
3	<b>00 0237 874 0</b>	HEXAGON HEAD BOLT	M10X35	8	
4	<b>00 1300 444 0</b>	FLANGE		1	
5	<b>00 0235 495 1</b>	SOCKET HEAD SCREW	M10X 25	12	
6	<b>00 0242 380 0</b>	HEXAGON HEAD BOLT	M12X120	4	
7	<b>00 0238 315 0</b>	HEXAGONAL NUT	M12	4	
8	<b>00 1301 651 0</b>	SPACER PIECE		4	
9	<b>00 1301 652 0</b>	WASHER		4	
10	<b>00 1301 630 0</b>	SHUT OFF PLATE		2	
11	<b>00 0237 573 0</b>	HEXAGON HEAD BOLT	M12X50	2	
12	<b>00 1301 650 0</b>	SOCKET HEAD SCREW	M12X40	2	
13	<b>00 1300 481 0</b>	BEARING PLATE		1	
14	<b>00 1300 364 0</b>	BEARING PLATE		1	
15	<b>77 0102 992 4</b>	HEXAGON HEAD SCREW		4	
16	<b>00 1301 870 0</b>	STAND		2	

**1) Remarks** 75 KW



**100 FUEL TANK 1)**

Pos.	Part No.	Description	Dimension	Quantity	Conditions
1	<b>00 1300 416 0</b>	FUEL TANK		1	
2	<b>00 1305 708 0</b>	LOCKING COVER	KRAFTSTOFFTANK	1	
3	<b>00 1300 611 0</b>	BEARING		1	
4	<b>00 0237 383 0</b>	HEXAGON HEAD BOLT	M10X25	7	
5	<b>00 0215 683 0</b>	WASHER	10,5	7	
6	<b>77 0002 771 6</b>	SECURING SCREW	M16X45-VERBUS RIPP	2	
7	<b>00 0214 612 0</b>	WASHER	16	2	
8	<b>00 1300 436 0</b>	SPACER TUBE		1	
9	<b>00 1301 418 0</b>	WASHER		1	
10	<b>00 0215 898 0</b>	HEXAGON HEAD BOLT	M16X160	1	
11	<b>00 1300 458 1</b>	SUCTION LANCE	MONOSTABILE REEDKONTAKTE	1	
12	<b>00 1301 266 0</b>	HYDR. HOSE		1	
13	<b>00 1301 433 0</b>	CLAMP	A 12-22X9 W1	2	
14	<b>00 1301 240 0</b>	HOSE PIPE		1	
15	<b>00 0215 102 0</b>	ANGLE UNION	BHE-L15	1	
16	<b>00 1301 238 0</b>	HYDR. HOSE		1	
17	<b>00 1301 591 0</b>	SCREW-IN FITTING	SDS-L15XM16X1, 5-TYPE E	2	
18	<b>00 1301 239 0</b>	HYDR. HOSE		1	
19	<b>00 0215 102 0</b>	ANGLE UNION	BHE-L15	1	
20	<b>00 1301 240 0</b>	HOSE PIPE		1	
21	<b>00 1302 368 0</b>	HOSE FITTING		1	
22	<b>00 1301 646 0</b>	SEAL KIT		1	
23	<b>00 1301 644 0</b>	FUEL FILTER		1	
24	<b>00 1301 645 0</b>	WATER CONTAINER		1	
25	<b>00 1301 682 0</b>	CABLE HARNESS	CABLE WITH SENSOR	1	
26	<b>00 0178 556 0</b>	CENTRAL PLUG	3 POLIG, KO-001807211		
27	<b>00 1301 647 0</b>	PLUG		1	
28	<b>00 1301 437 0</b>	CLAMP	Z KP-3-R-20-20-PP	3	
29	<b>00 1300 064 0</b>	COVER PLATE	Z DP-3-W1 ERS.D.313226.	3	
30	<b>00 1301 540 0</b>	STUD BOLT	M8X90	3	
31	<b>00 0236 170 0</b>	HEXAGONAL NUT	M8	3	
32	<b>00 1301 447 0</b>	CLAMP	L KP-3-R-20-PA	1	
33	<b>00 1300 066 0</b>	COVER PLATE	L DP-3-W1	1	
34	<b>00 1301 536 0</b>	STUD BOLT	M6X55	2	
35	<b>00 0211 113 0</b>	LOCK NUT	M6	2	
36	<b>00 1302 108 0</b>	SUPPORT BRACKET		1	
37	<b>00 1302 051 0</b>	FILL IN STRAINER		1	
38	<b>00 1304 554 0</b>	GASKET	75 X 67 X 4 NBR/SBR 65	1	
39	<b>00 1302 876 0</b>	UNION NUT	S80 X 4	1	
40	<b>00 1302 434 0</b>	FILTER HEAD		1	2)
41	<b>00 0223 018 0</b>	CLAMP	COBRA 15/8	1	
<b>1)</b>	<b>Remarks</b>	75/88/90/100 KW			
<b>2)</b>	<b>Remarks</b>	complete			

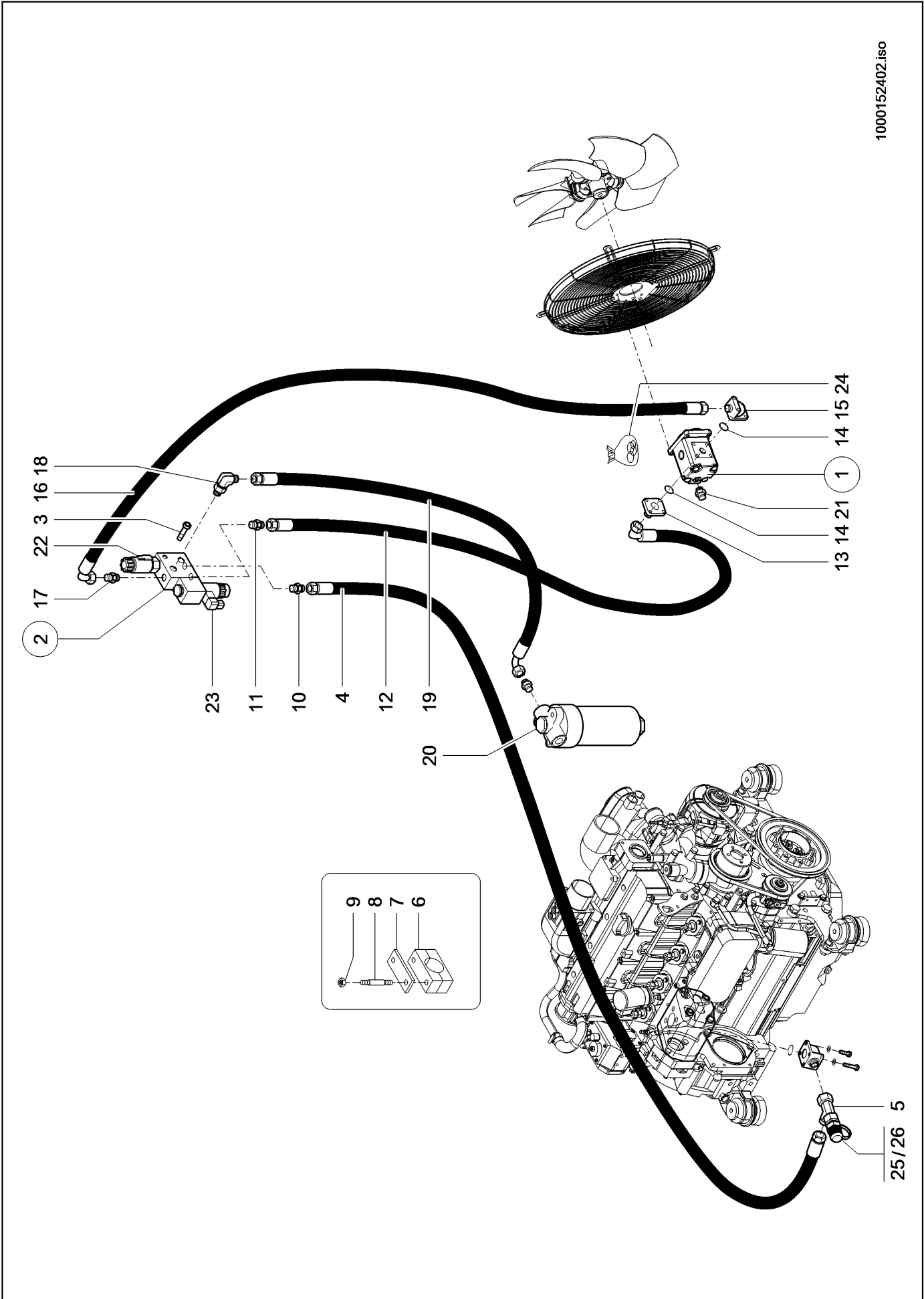


1000173624a.iso

**100 OIL PUMP**

<b>Pos.</b>	<b>Part No.</b>	<b>Description</b>	<b>Dimension</b>	<b>Quantity</b>	<b>Conditions</b>
27	<b>00 1301 189 0</b>	HYDR. HOSE		1	
28	<b>00 1301 190 0</b>	HYDR. HOSE		1	
37	<b>00 1302 390 0</b>	PROTECTOR PLATE		1	

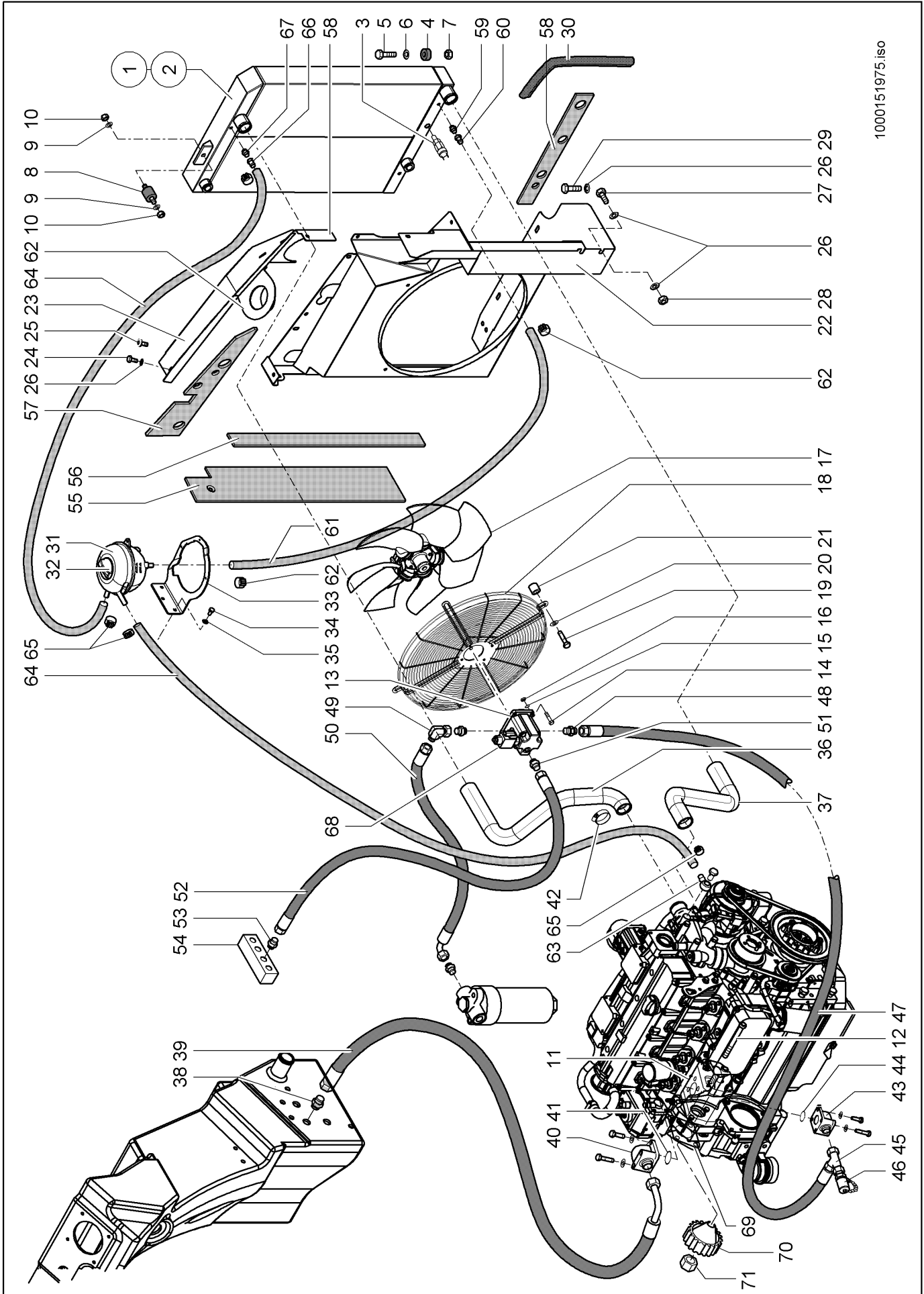




1000152402.iso

**130 FAN REVERSE**

Pos.	Part No.	Description	Dimension	Quantity	Conditions
1	<b>00 1300 598 1</b>	HYDRAULIC MOTOR	14 CCM BIDIRECTIONAL	1	
2	<b>00 1300 989 0</b>	VALVE		1	
3	<b>00 0213 001 0</b>	SOCKET HEAD SCREW	M6X 60	3	
4	<b>00 1301 187 0</b>	HYDR. HOSE		1	
5	<b>00 1301 313 0</b>	MINIMESS POINT	G - L15 A3C	1	
6	<b>00 1301 447 0</b>	CLAMP	L KP-3-R-20-PA	1	
7	<b>00 1300 066 0</b>	COVER PLATE	L DP-3-W1	1	
8	<b>00 1301 536 0</b>	STUD BOLT	M6X55	2	
9	<b>00 0211 113 0</b>	LOCK NUT	M6	2	
10	<b>00 0249 884 0</b>	SCREW-IN FITTING	SWOSDS-L15XG1/2A -TYPE E	1	
11	<b>00 0249 779 0</b>	UNION	SDS-L15XG1/2A-TYPE E	1	
12	<b>00 1301 229 0</b>	HYDR. HOSE		1	
13	<b>00 0573 442 0</b>	FLANGE SUPPORT	GFS-L15-LK35-L23- OMD	1	
14	<b>00 1301 341 0</b>	O-RING	20X2,5-N	2	
15	<b>00 0808 783 0</b>	ANGLE FLANGE	WFS-L15-LK35	1	
16	<b>00 1301 230 0</b>	HYDR. HOSE		1	
17	<b>00 0249 779 0</b>	UNION	SDS-L15XG1/2A-TYPE E	1	
18	<b>00 1301 576 1</b>	ELBOW-TYPE SCREW-IN UNION ADJUSTABLE	SDE-L15XG1/2A-TYPE H	1	
19	<b>00 1301 188 0</b>	HYDR. HOSE		1	
20	<b>00 1301 037 0</b>	FAN CASE		1	
20	<b>00 1300 257 0</b>	HYDRAULIC FILTER		1	
21	<b>00 0249 774 0</b>	SCREW-IN FITTING	SDS-L10XG1/4A-TYPE E	1	
22	<b>00 1302 116 0</b>	SOLENOID VALVE		1	
23	<b>00 1302 117 0</b>	SOLENOID VALVE		1	
24	<b>00 1304 922 0</b>	SEAL KIT		1	



1000151975.iso

**140 ENGINE COOLER 1)**

Pos.	Part No.	Description	Dimension	Quantity	Conditions
1	<b>00 1300 405 0</b>	COMBICOOLER	ERSETZT D. 13039681	1	
2	<b>00 1300 346 0</b>	COMBICOOLER	63 MM F. DEUTZ BF4M2012	1	
3	<b>00 1300 815 0</b>	TEMPERAT.FEELER	110°C	1	
4	<b>00 1301 303 0</b>	BEARING		2	
5	<b>00 0237 573 0</b>	HEXAGON HEAD BOLT	M12X50	2	
6	<b>00 1301 405 0</b>	WASHER	13 ST A2C	4	
7	<b>00 0238 315 0</b>	HEXAGONAL NUT	M12	4	
8	<b>00 1301 304 0</b>	BEARING	D 40X30 M8X20	1	
9	<b>00 0215 682 0</b>	WASHER	8,4	2	
10	<b>00 0238 132 0</b>	LOCK NUT	M8	2	
11	<b>00 1300 600 0</b>	HYDRAULIC PUMP	16,8 CCM	1	
11	<b>00 0244 814 0</b>	WOODRUFF KEY	3X6,5	1	
11	<b>60 0501 158 2</b>	SEALING RING SET	SAUER	1	
12	<b>00 0242 250 1</b>	SOCKET HEAD SCREW	M10X110	2	
13	<b>00 1300 599 1</b>	HYDRAULIC MOTOR	14,4 CCM RE M. PROP.-VEN	1	
14	<b>00 0237 442 0</b>	HEXAGON HEAD BOLT	M8X25	4	
15	<b>00 0237 816 0</b>	WASHER	8-8,4X24X2	8	
16	<b>00 0238 132 0</b>	LOCK NUT	M8	4	
17	<b>00 1300 323 0</b>	FAN WHEEL		1	
18	<b>00 1300 322 0</b>	GUARD SCREEN		1	
19	<b>00 0237 444 0</b>	HEXAGON HEAD BOLT	M8-45	4	
20	<b>00 0237 816 0</b>	WASHER	8-8,4X24X2	4	
21	<b>00 1300 502 0</b>	SPACER PIECE		4	
22	<b>00 1300 499 0</b>	AIR GUIDE		1	
23	<b>00 1300 532 0</b>	AIR GUIDE		1	
24	<b>00 0237 382 0</b>	HEXAGON HEAD BOLT	M10X20	3	
25	<b>00 0235 495 1</b>	SOCKET HEAD SCREW	M10X 25	1	
26	<b>00 0237 592 0</b>	WASHER	D10,5X30X2,5	11	
27	<b>00 0233 396 0</b>	HEXAGON HEAD BOLT	M10X30-MKL	2	
28	<b>00 0238 316 0</b>	LOCK NUT	M10	2	
29	<b>00 0237 382 0</b>	HEXAGON HEAD BOLT	M10X20	3	
30	<b>00 1300 167 0</b>	PROFILE	1STÜCK=2METER KLEMMBEREI	2	
31	<b>00 1300 321 0</b>	COMPENSATION RESERVOIR		1	
32	<b>00 1300 075 0</b>	VALVE COVER	AUSGLEICHSBEHAELT ER	1	
33	<b>00 1300 419 0</b>	SUPPORT		1	
34	<b>00 0237 382 0</b>	HEXAGON HEAD BOLT	M10X20	3	
35	<b>00 0215 683 0</b>	WASHER	10,5	3	
36	<b>00 1300 562 0</b>	HOSE		1	
37	<b>00 1300 563 0</b>	HOSE		1	
38	<b>00 1301 581 0</b>	UNION	SDS-L28XM26X1, 5-TYPE E	1	
39	<b>00 1301 227 0</b>	HYDR. HOSE		1	
40	<b>00 0216 524 0</b>	UNION	WFS-L28-LK40	1	
41	<b>00 1301 340 0</b>	O-RING	26X2,5-N	1	
42	<b>00 1301 439 0</b>	CLAMP	B1-60X15	4	
43	<b>00 0808 783 0</b>	ANGLE FLANGE	WFS-L15-LK35	1	
44	<b>00 1301 341 0</b>	O-RING	20X2,5-N	1	
45	<b>00 0249 868 0</b>	T-UNION, ADJUSTM.	SWORT-L15	1	
46	<b>00 1301 311 0</b>	MINIMESS POINT	1620 - L10 DKO ( M16X1,5	1	
47	<b>00 1301 265 0</b>	HYDR. HOSE		1	

**140 ENGINE COOLER 1)**

Pos.	Part No.	Description	Dimension	Quantity	Conditions
48	<b>00 0215 736 0</b>	SCREW-IN FITTING	SDS-L15X7/8-14UNF-2A-TYP	1	
49	<b>00 0217 079 0</b>	SCREW-IN FITTING	SDE-L15X7/8-14UNF-2A-TYP	1	
50	<b>00 1301 188 0</b>	HYDR. HOSE		1	
51	<b>00 0215 639 0</b>	SCREW-IN FITTING	SDS-L10X9/16-18UNF-2A-TY	1	
52	<b>00 1301 176 0</b>	HYDR. HOSE		1	
53	<b>00 0250 004 0</b>	SCREW-IN FITTING	SDS-L10XM14X1, 5-TYPE E	1	
54	<b>00 1300 629 0</b>	MANIFOLD		1	
55	<b>00 1300 822 0</b>	INSULATING MAT		1	
56	<b>00 1300 820 0</b>	INSULATING MAT		1	
57	<b>00 1300 821 0</b>	INSULATING MAT		1	
58	<b>00 1300 823 0</b>	INSULATING MAT		1	
59	<b>00 0215 920 0</b>	STRAIGHT MALE CONNECTOR	SDS-L18XM22X1, 5-TYPE F	1	
60	<b>00 1300 826 0</b>	HOSE FITTING	M26X1,5/DN16 A3C	1	
61	<b>00 1300 172 0</b>	HOSE	A-15 X 3,5 EPDM/PY/EPDM	1	
62	<b>00 1301 433 0</b>	CLAMP	A 12-22X9 W1	2	
63	<b>00 1300 530 0</b>	TUBE NIPPLE	DN 6	1	
64	<b>00 1301 462 0</b>	HOSE	8X3 - 2A NBR/CR	2	
65	<b>00 1301 444 0</b>	CLAMP	COBRA 12/8 SCHWARZ	4	
66	<b>00 1301 571 0</b>	UNION	SDS-L10XM12X1, 5-TYPE E	1	
67	<b>00 1300 289 0</b>	HOSE FITTING		1	
68	<b>00 1302 116 0</b>	SOLENOID VALVE		1	
69	<b>00 1302 681 0</b>	GASKET		1	
70	<b>00 1302 485 0</b>	GEAR		1	
71	<b>00 1302 486 0</b>	LOCK NUT	N.Z.	1	

**1) machine no.**+ up to 401010096  
75 KW

Thank you so much for reading.  
Please click the “Buy Now!”  
button below to download the  
complete manual.



After you pay.

You can download the most  
perfect and complete manual in  
the world immediately.

Our support email:

[ebooklibonline@outlook.com](mailto:ebooklibonline@outlook.com)