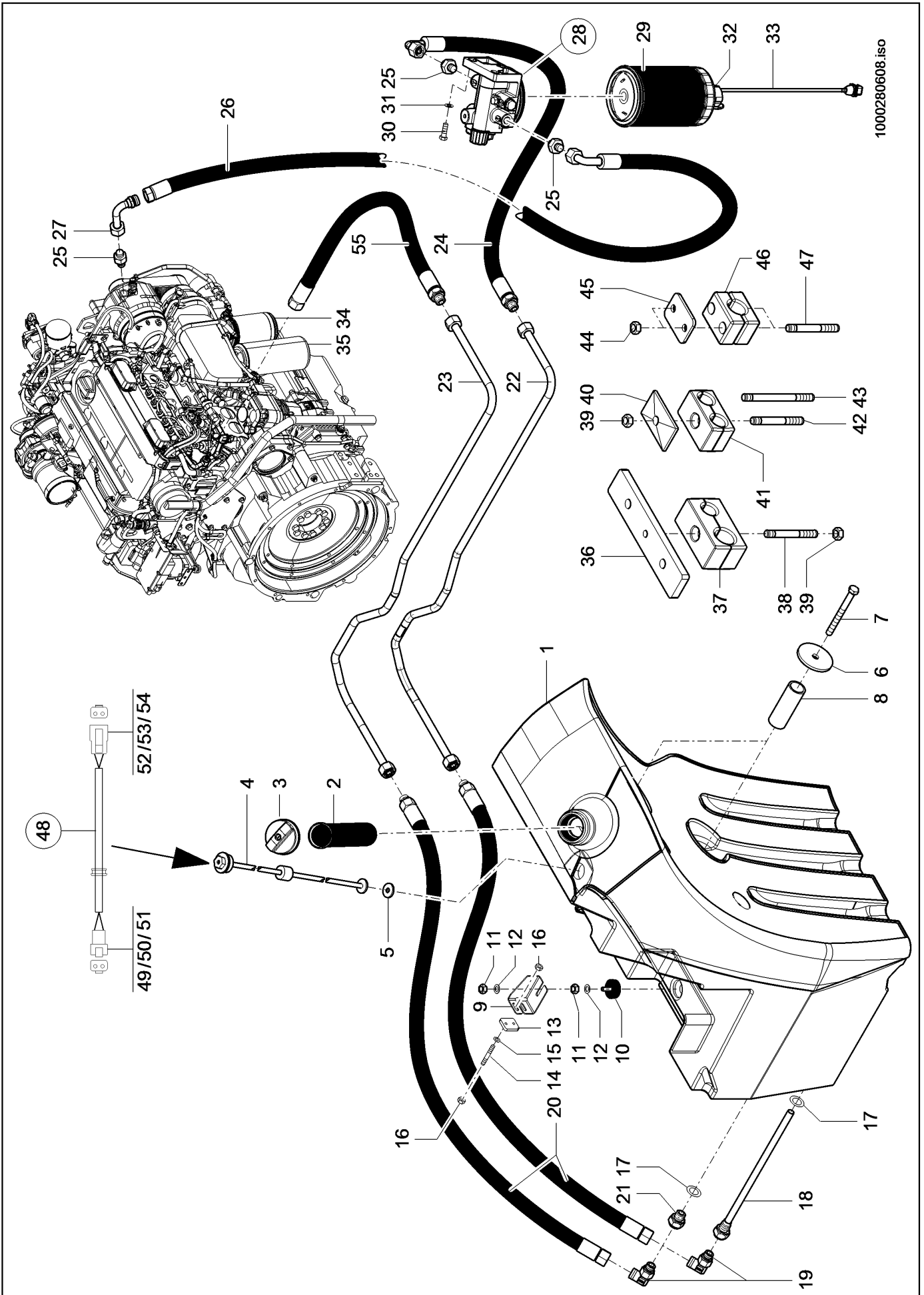


100 ENGINE SUSPENSION

Pos.	Part No.	Description	Dimension	Quantity	Conditions
1	00 1304 573 0	DIESEL ENGINE	TCD 4.1 L4 115 KW 2300 M	1	1)
2	00 1304 574 0	DIESEL ENGINE	TCD 4.1 L4 115 KW 2300 M	1	2)
3	00 1304 373 0	BEARING	30/31	2	
4	00 1304 608 0	BEARING		1	
5	00 0237 572 0	HEXAGON HEAD BOLT	M12X35	4	
6	00 0237 383 0	HEXAGON HEAD BOLT	M10X25	16	
7	00 0215 683 0	WASHER	10,5	16	
8	00 0237 572 0	HEXAGON HEAD BOLT	M12X35	4	
9	00 0218 512 0	WASHER	A13-13X24X2,5	4	
10	00 1304 609 0	BEARING	KPLT.	1	
11	00 0237 461 0	HEXAGON HEAD BOLT	M12X30	8	
12	00 1304 775 0	BEARING	KPLT.	2	
13	00 1304 374 0	BEARING	30/31	2	
14	00 1305 311 0	FLANGE	F. KUPPLUNG	1	
15	00 1304 397 0	CLUTCH		1	
16	50 0300 903 6	HEX. SOCKET CHEESE-HEAD SCREW	M10X20	8	
17	00 0223 022 0	STUD BOLT	M10X20	2	
18	00 0236 171 0	HEXAGONAL NUT	M10	2	
19	00 0479 671 0	ADJUSTING DISC	14X60X1,0	1	
20	00 0479 670 0	ADJUSTING DISC	14X60X0,5	1	
21	00 0479 672 0	ADJUSTING DISC	14X60X1,5	1	
22	00 0235 495 1	SOCKET HEAD SCREW	M10X 25	10	
23	00 1305 247 0	DIESEL ENGINE	TCD 4.1 L4 115 KW 2300 M	1	3)
24	00 1305 248 0	DIESEL ENGINE	TCD4.1L4 115KW 2300MIN-1	1	4)
25	00 1305 627 0	ENGINE	TCD 4.1 L4 115 KW 2300 M	1	5)
26	00 1305 628 0	ENGINE	TCD 4.1 L4 115KW 2300MIN	1	6)

1)	Remarks	HRC, Emission Standard 3b
2)	Remarks	HRC, Emission Standard 3b with air compressor
3)	Remarks	LRC, Emission Standard 3a
4)	Remarks	LRC, Emission Standard 3a with air compressor
5)	Remarks	HRC, AC, Emission Standard 3b
6)	Remarks	LRC, AC, Emission Standard 3a



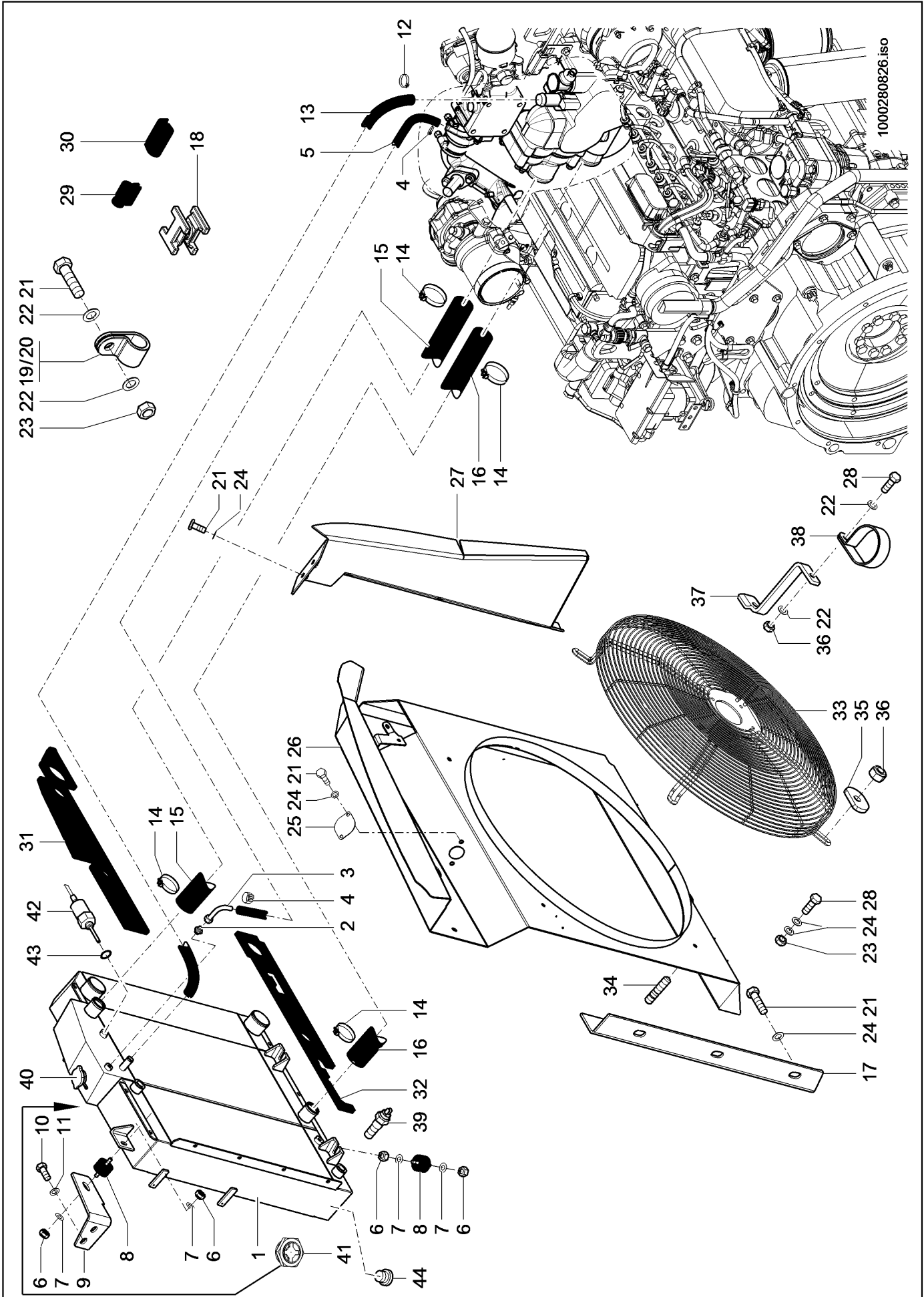
1000280608.iso

100 FUEL TANK

Pos.	Part No.	Description	Dimension	Quantity	Conditions
1	00 1304 640 0	FUEL TANK		1	
2	00 1302 051 0	FILL IN STRAINER		1	
3	00 1305 708 0	LOCKING COVER	KRAFTSTOFFTANK	1	
4	00 1304 386 0	SENDER UNIT	985 MM LG.	1	
6	00 1301 418 0	WASHER		2	
7	00 0215 898 0	HEXAGON HEAD BOLT	M16X160	2	
8	00 1300 436 0	SPACER TUBE		2	
9	00 1304 610 0	SUPPORT		1	
10	00 1304 375 0	BUFFER BUMPER	D 50X18-M10X38	1	
11	00 0238 316 0	LOCK NUT	M10	2	
12	00 0237 592 0	WASHER	D10,5X30X2,5	2	
13	00 1304 795 0	THREADED PLATE		1	
14	00 0215 437 0	STUD BOLT	M 8X 25	2	
15	00 0237 816 0	WASHER	8-8,4X24X2	2	
16	00 0238 132 0	LOCK NUT	M8	2	
17	00 0217 982 0	SEALING RING	A 22X29X1,5	2	
18	00 1305 293 0	CONNECTOR	I-B-M18X1,5	1	
19	00 1301 585 0	SCREW-IN FITTING	SDE-L15XM18X1, 5-TYPE H	2	
20	00 0069 041 0	HOSE PIPE		2	
21	00 1306 214 0	REDUCING ADAPTER	A-E-M22X1,5 - I-B-M18X1,	1	
22	00 1304 757 0	PIPE	KPLT.	1	
23	00 1304 756 0	PIPE	KPLT.	1	
24	00 1305 405 0	HOSE PIPE		1	
25	00 1301 591 0	SCREW-IN FITTING	SDS-L15XM16X1, 5-TYPE E	3	
26	00 1305 399 0	HOSE PIPE		1	
27	00 1301 079 0	TUBE ELBOW	L15 (M22X1,5) A3C	1	
28	00 1302 434 0	FILTER HEAD		1	
29	00 1993 117 0	FILTER CARTRIDGE		1	
30	00 0237 383 0	HEXAGON HEAD BOLT	M10X25	2	
31	00 0215 683 0	WASHER	10,5	2	
32	00 1993 119 0	SEALING RING		1	
33	00 1993 118 0	SENSOR CABLE		1	
34	00 1302 277 0	FUEL FILTER		1	
35	00 1302 276 1	ENGINE OIL FILTER		1	
36	00 1304 737 0	LEDGE		1	
37	00 1301 454 0	CLAMP	Z KP-3-R-20-15-PP	1	
38	00 0147 145 0	STUD BOLT	M 8X 65	1	
39	00 0238 132 0	LOCK NUT	M8	3	
40	00 0216 994 0	COVER PLATE	Z DP-2-W1	2	
41	00 1301 443 0	CLAMP	Z KP-2-R-15-15-PP	2	
42	00 1301 537 0	STUD BOLT	M08X45	1	
43	00 1301 539 0	STUD BOLT	M8X75-8.8 A2C	1	
44	00 0211 113 0	LOCK NUT	M6	6	
45	00 0313 626 0	COVER PLATE	L DP-2-W1 ERS.D. 0211 53	3	
46	00 1301 447 0	CLAMP	L KP-3-R-20-PA	1	
47	00 0219 932 0	STUD BOLT	M 6X 50	1	
48	00 1306 653 0	WIRE	KRAFTSTOFFVERSOR GUNG	1	
49	00 0326 892 0	PIN HOUSING	2-POLIG	1	
50	00 1301 785 0	PLUG	1,0 - 2,0	1	
51	00 1301 763 0	V-SHAPED ELEMENT	2-POLIG	1	

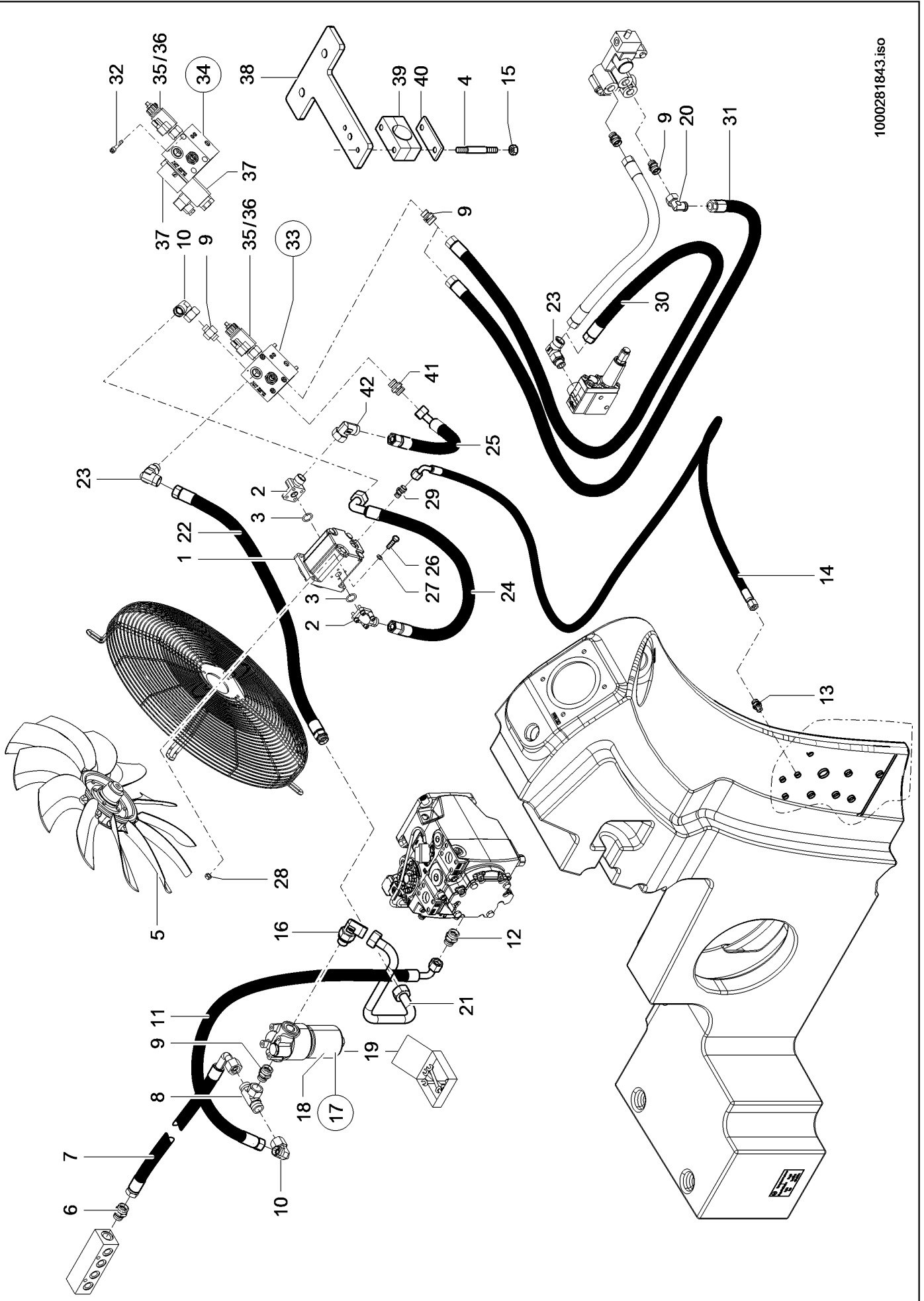
100 FUEL TANK

Pos.	Part No.	Description	Dimension	Quantity	Conditions
52	00 0311 341 0	PLUG	2-POLIG	1	
53	00 1300 122 0	BUSHING CONTACT	1,0 - 2,0	1	
54	00 0311 306 0	RETENTION	2-POLIG	1	
55	00 1305 400 0	HOSE PIPE		1	



140 ENGINE COOLER

Pos.	Part No.	Description	Dimension	Quantity	Conditions
1	00 1304 392 1	RADIATOR		1	
2	00 0212 933 0	SCREW-IN FITTING	SDS-L12XM12X1, 5-TYPE B	1	
3	00 0142 279 0	TUBE NIPPLE	DN10 - N90 L12 (M18X1,5)	1	
4	00 1302 315 0	CLAMP	COBRA 16/8	2	
5	00 1305 496 0	FUEL HOSE	10X3X2,50 M	1	
6	00 0238 316 0	LOCK NUT	M10	6	
7	00 0237 592 0	WASHER	D10,5X30X2,5	6	
8	00 1304 412 0	BEARING	D 50X30 M 10X25	3	
9	00 1303 169 0	SUPPORT		1	
10	00 0237 570 0	HEXAGON HEAD BOLT	M10X16	2	
11	00 0237 592 0	WASHER	D10,5X30X2,5	2	
12	00 0223 020 0	HOSE CLAMP	B1 X 28 X 15	2	
13	00 1304 417 0	PRESHAPED TUBE		1	
14	00 0217 447 0	HOSE CLAMP	B1-58X15	4	
15	00 1304 393 0	PRESHAPED TUBE		1	
16	00 1304 419 0	PRESHAPED TUBE		1	
17	00 1304 718 0	ANGLE		1	
18	00 1305 220 0	CONNECTION	DSWS4 26,3X20,3X18,01		
19	00 0364 814 0	CLAMP	D-25X20-10,5 ERS.D.03648	1	
20	00 0812 991 0	HOLDER CLAMP	D1-15X20	1	
21	00 0237 439 0	HEXAGON HEAD BOLT	M8X16	9	
22	00 0215 682 0	WASHER	8,4	3	
23	00 0238 132 0	LOCK NUT	M8	12	
24	00 0215 682 0	WASHER	8,4	28	
25	00 1304 699 0	PLATE		1	
26	00 1304 675 0	GUIDE PLATE	KPLT.	1	
27	00 1304 717 0	GUIDE PLATE		1	
28	00 0237 442 0	HEXAGON HEAD BOLT	M8X25	11	
29	00 1300 167 0	PROFILE	1STÜCK=2METER KLEMMBEREI	4	
30	00 1300 171 0	PROFILE	1,0-3, 5KLEMMBR.ERS.D.130	0	
31	00 1304 827 0	GASKET		1	
32	00 1304 828 0	GASKET		1	
33	00 1304 713 0	GUARD SCREEN		1	
34	00 0215 437 0	STUD BOLT	M 8X 25	4	
35	00 1302 871 0	WASHER	N.Z.	4	
36	00 0238 132 0	LOCK NUT	M8	4	
37	00 1305 685 0	SUPPORT		1	
38	00 1301 442 0	CLAMP	D 60 ERS.D.0217309.0	1	
39	00 1300 175 0	TEMPERAT.FEELER	40 - 120°C - M14X1,5	1	
40	00 1307 054 0	LOCKING COVER	F. ÖL-WASSER-KÜHLER 1304	1	
41	00 0223 259 0	OIL INDICATEUR	M20X1,5	1	
42	00 1306 955 0	SENSOR		1	
43	00 0597 302 0	SEALING RING	A14X20X1,5	1	
44	00 0656 014 1	SCREW PLUG	M14X1,5	1	



1000281843.iso

140 ENGINE COOLER

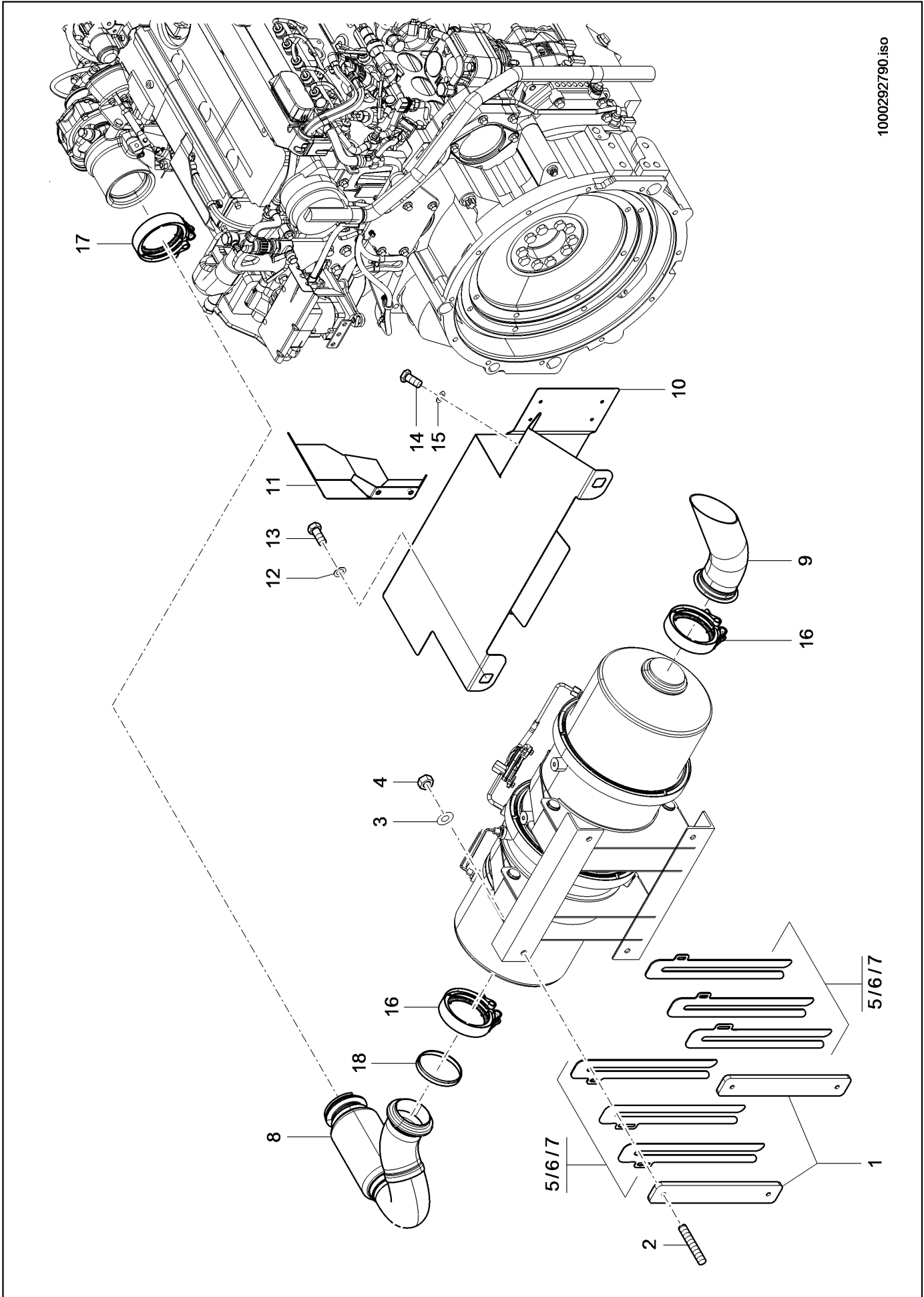
Pos.	Part No.	Description	Dimension	Quantity	Conditions
1	00 1304 427 0	HYDRAULIC MOTOR	17 CM ³	1	
2	00 0808 783 0	ANGLE FLANGE	WFS-L15-LK35	2	
3	00 1301 341 0	O-RING	20X2,5-N	2	
4	00 1301 536 0	STUD BOLT	M6X55	2	
5	00 1304 663 0	FAN WHEEL		1	
6	00 0689 148 1	SCREW-IN FITTING	SDS-L15XM18X1, 5-TYPE E-R	1	
7	00 1305 393 0	HOSE PIPE		1	
8	00 0249 853 0	T-UNION, ADJUSTM.	SWOBT-L18	1	
9	00 0249 780 0	SCREW-IN FITTING	SDS-L18XG1/2A-TYPE E	1	
10	00 0249 837 0	ANGLE UNION	SWOE-L18	2	
11	00 0141 062 0	HOSE PIPE		1	
12	00 0217 033 0	SCREW-IN FITTING	SDS-L18X1	1	
13	00 0250 004 0	SCREW-IN FITTING	1/16-12UN-2A-T SDS-L10XM14X1, 5-TYPE E	1	
14	00 1305 345 0	HOSE PIPE		1	
15	00 0211 113 0	LOCK NUT	M6	2	
16	00 1301 603 0	SCREW-IN FITTING	SDE-L18XM22X1, 5-TYPE H	1	
17	00 1301 037 0	FAN CASE		1	
18	00 1300 257 0	HYDRAULIC FILTER		1	
19	00 0845 872 0	SEAL KIT		1	
20	00 0249 837 0	ANGLE UNION	SWOE-L18	1	
21	00 1304 820 0	PIPE	KPLT.	1	
22	00 1305 341 0	HOSE PIPE		1	
23	00 1301 577 0	SCREW-IN FITTING	SDE-L18XG1/2A-TYPE H	2	
24	00 1305 348 0	HOSE PIPE		1	
25	00 1305 342 0	HOSE PIPE		1	
26	00 0237 442 0	HEXAGON HEAD BOLT	M8X25	4	
27	00 0215 682 0	WASHER	8,4	4	
28	00 0238 132 0	LOCK NUT	M8	4	
29	00 0249 774 0	SCREW-IN FITTING	SDS-L10XG1/4A-TYPE E	1	
30	00 1305 401 0	HOSE PIPE		1	1)
31	00 1305 325 0	HOSE PIPE		1	
32	00 1992 832 0	SOCKET HEAD SCREW	M8X60	3	
33	00 1304 390 0	VALVE		1	
34	00 1304 389 0	REVERSING VALVE		1	
35	00 1304 428 0	SOLENOID VALVE		1	
36	00 1307 412 0	SOLENOID	M19P-12D-1.1A-DE	1	
37	00 1304 429 0	SOLENOID		1	
38	00 1304 792 0	SUPPORT		1	
39	00 0325 088 0	CLAMP	L KP-3-R-22-PP	1	
40	00 1300 066 0	COVER PLATE	L DP-3-W1	1	
41	00 0249 779 0	UNION	SDS-L15XG1/2A-TYPE E	1	
42	00 0249 836 0	ANGULAR MALE CONNECTOR	SWOE-L15	1	

1) Remarks

series

160 SOUND ABSORBER UNDER THE HOOD 1)

Pos.	Part No.	Description	Dimension	Quantity	Conditions
1	00 1304 695 0	THREAD.SCREW LEDG		4	
2	00 0223 023 0	STUD BOLT	M10X50	4	
3	00 0215 683 0	WASHER	10,5	4	
4	00 0238 316 0	LOCK NUT	M10	4	
5	00 1300 399 0	EXHAUST SILENCER		1	
6	00 1300 467 0	PROTECTOR PLATE		1	
7	00 1305 689 0	EXHAUST PIPE		1	
8	00 0237 462 0	HEXAGON HEAD BOLT	M12X40	4	
9	00 1301 405 0	WASHER	13 ST A2C	4	
10	00 1305 684 0	SUPPORT		1	
11	00 1301 429 0	CLAMP	D 64,5	1	
12	00 0236 200 0	HEXAGON HEAD BOLT	M8X20	6	
13	00 0237 816 0	WASHER	8-8,4X24X2	6	
14	00 1306 431 0	CLAMP	K1-1-80	1	
1)	Remarks		LRC		



Thank you so much for reading.
Please click the “Buy Now!”
button below to download the
complete manual.



After you pay.

You can download the most
perfect and complete manual in
the world immediately.

Our support email:

ebooklibonline@outlook.com