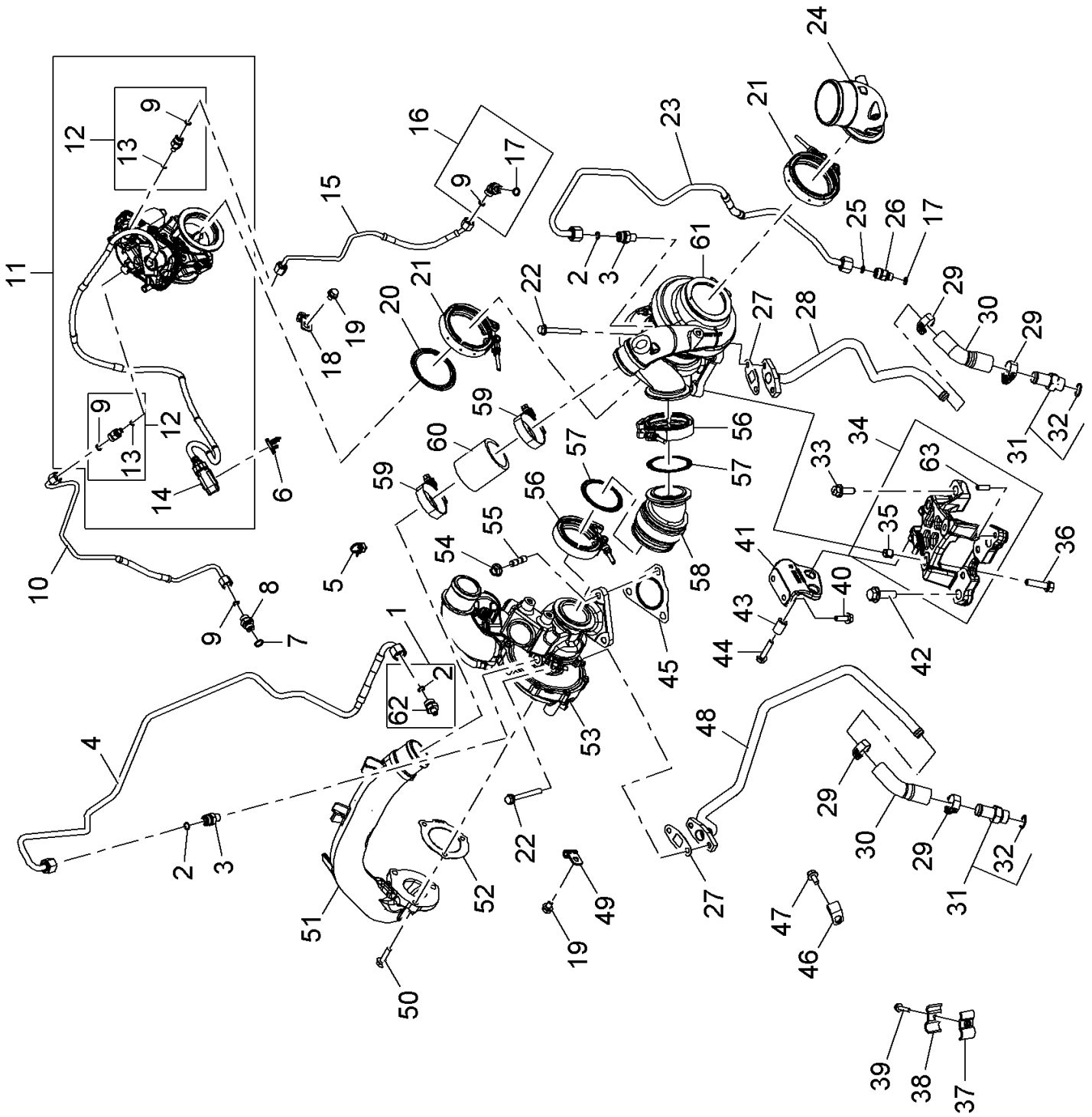


**100 EXHAUST TURBO CHARGER 1)**

| <b>Pos.</b> | <b>Part No.</b>      | <b>Description</b> | <b>Dimension</b> | <b>Quantity</b> | <b>Conditions</b> |
|-------------|----------------------|--------------------|------------------|-----------------|-------------------|
| 1           | <b>00 1953 760 0</b> | HOSE CLAMP         |                  | 1               |                   |
| 2           | <b>00 1952 167 0</b> | HOSE               | TURBO            | 1               |                   |
| 3           | <b>00 1145 363 0</b> | SENSOR             |                  | 1               |                   |
| 4           | <b>00 1953 754 0</b> | HEXAGON HEAD BOLT  | M6X12            | 2               |                   |
| 5           | <b>60 0502 163 2</b> | SCREW              | M6X12            | 1               |                   |

**1) machine no.**

+ 0  
+ K5600051  
+ K5600052  
+ K5600053  
+ K5600054  
+ K5600055  
+ K5600056  
+ K5600057  
+ K5600058  
+ K5600059



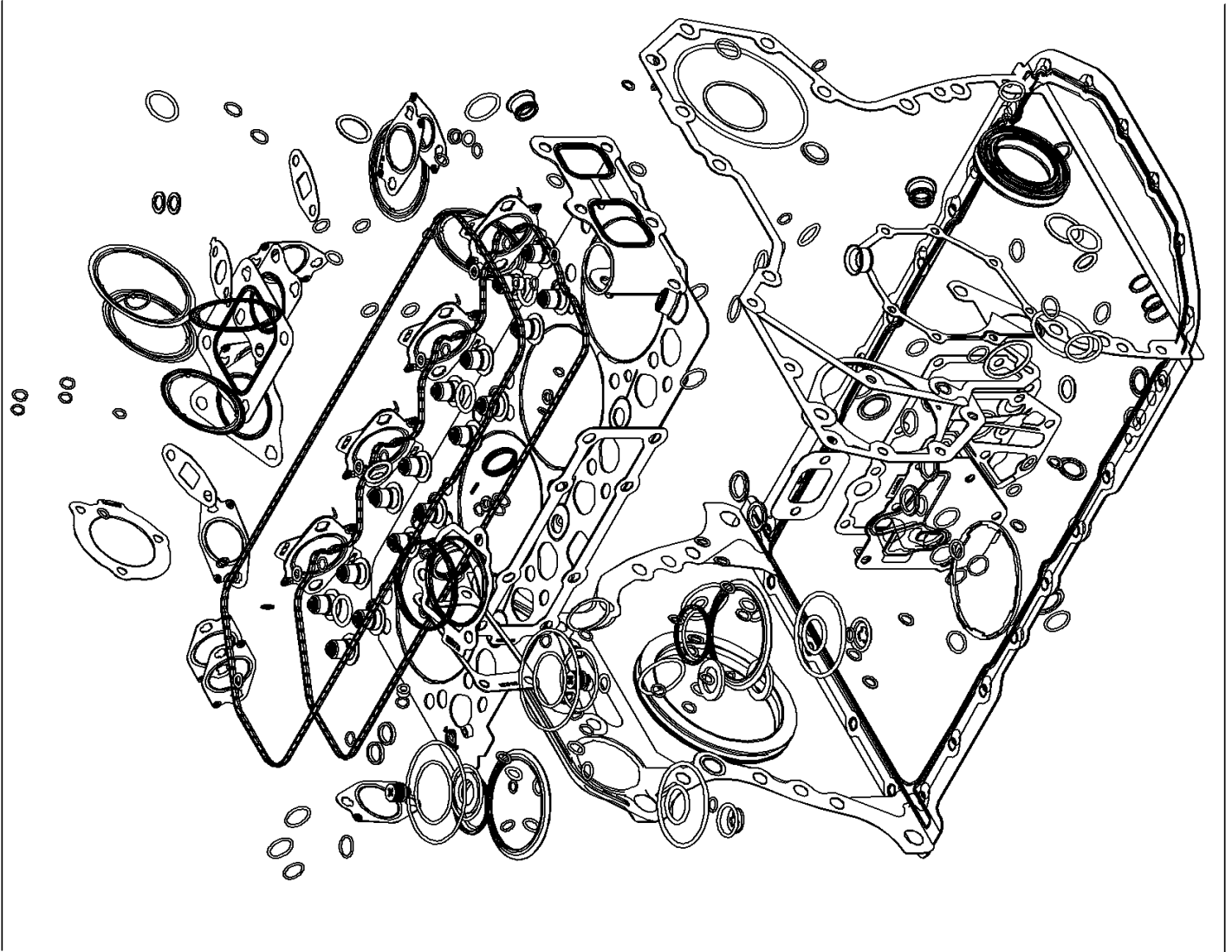
**100 EXHAUST TURBO CHARGER 1)**

| Pos. | Part No.             | Description                      | Dimension  | Quantity | Conditions |
|------|----------------------|----------------------------------|------------|----------|------------|
| 1    | <b>00 1135 056 0</b> | UNION CONNECTOR                  |            | 1        |            |
| 2    | <b>60 0502 158 5</b> | O-RING                           |            | 3        |            |
| 3    | <b>00 1147 030 0</b> | UNION CONNECTOR                  |            | 2        |            |
| 4    | <b>00 1954 084 0</b> | LINE                             |            | 1        |            |
| 5    | <b>ERS06</b>         | NOT DELIVERABLE AS A SINGLE PART |            | 4        |            |
| 6    | <b>ERS06</b>         | NOT DELIVERABLE AS A SINGLE PART |            | 1        |            |
| 7    | <b>60 0502 164 1</b> | O-RING                           |            | 1        |            |
| 8    | <b>00 1161 440 0</b> | UNION CONNECTOR                  |            | 1        |            |
| 9    | <b>60 0502 663 4</b> | O-RING                           |            | 4        |            |
| 10   | <b>00 1161 437 0</b> | PIPE                             |            | 1        |            |
| 11   | <b>00 1954 085 0</b> | OUTLET VALVE                     |            | 1        |            |
| 12   | <b>00 1161 438 0</b> | UNION CONNECTOR                  |            | 2        |            |
| 13   | <b>00 1955 680 0</b> | OUTLET VALVE                     | TURBOLADER | 1        |            |
| 14   | <b>ERS06</b>         | NOT DELIVERABLE AS A SINGLE PART |            | 1        |            |
| 15   | <b>00 1161 445 0</b> | PIPE                             |            | 1        |            |
| 16   | <b>00 1161 446 0</b> | ELBOW CONNECTOR                  |            | 1        |            |
| 17   | <b>60 0502 156 7</b> | O-RING                           | 9,3X2,2    | 3        |            |
| 18   | <b>00 1161 469 0</b> | CLAMP                            |            | 1        |            |
| 19   | <b>00 1146 122 0</b> | SCREW                            | M8X12      | 2        |            |
| 20   | <b>00 1161 474 0</b> | GASKET                           |            | 1        |            |
| 21   | <b>00 1161 468 0</b> | CLAMP                            |            | 2        |            |
| 22   | <b>00 1146 125 0</b> | SCREW                            | M8X75      | 4        |            |
| 23   | <b>00 1954 086 0</b> | LINE                             |            | 1        |            |
| 24   | <b>00 1161 462 0</b> | SLEEVE                           |            | 1        |            |
| 25   | <b>60 0502 626 4</b> | O-RING                           |            | 1        |            |
| 26   | <b>00 1132 642 0</b> | UNION CONNECTOR                  |            | 1        |            |
| 27   | <b>60 0502 928 6</b> | GASKET                           |            | 2        |            |
| 28   | <b>00 1161 450 0</b> | PIPE                             |            | 1        |            |
| 29   | <b>00 1161 451 0</b> | CLAMP                            |            | 4        |            |
| 30   | <b>00 1161 453 0</b> | SLEEVE                           |            | 2        |            |
| 31   | <b>00 1146 059 0</b> | GREASE NIPPLE                    |            | 2        |            |
| 32   | <b>60 0502 160 4</b> | O-RING                           | 19X2,4     | 2        |            |
| 33   | <b>00 1145 957 0</b> | SCREW                            |            | 2        |            |
| 34   | <b>00 1164 914 0</b> | SUPPORT                          |            | 1        |            |
| 35   | <b>00 1146 697 0</b> | PIN                              |            | 2        |            |
| 36   | <b>00 1161 449 0</b> | STD SCREW                        |            | 3        |            |
| 37   | <b>00 1161 456 0</b> | FLANGE                           |            | 4        |            |
| 38   | <b>00 1161 459 0</b> | FLANGE                           |            | 4        |            |
| 39   | <b>60 0502 162 9</b> | SCREW                            | M6X25      | 4        |            |
| 40   | <b>00 1161 443 0</b> | STD SCREW                        |            | 2        |            |
| 41   | <b>00 1161 442 0</b> | SUPPORT                          |            | 1        |            |
| 42   | <b>60 0502 146 7</b> | SCREW                            | M12X40     | 1        |            |
| 43   | <b>00 1132 567 0</b> | BRACE                            |            | 2        |            |
| 44   | <b>00 1161 441 0</b> | STD SCREW                        |            | 2        |            |
| 45   | <b>00 1161 481 0</b> | FLAT SEAL                        |            | 1        |            |
| 46   | <b>00 1161 487 0</b> | CLAMP                            |            | 1        |            |
| 47   | <b>60 0502 154 7</b> | SCREW                            | M8X16      | 1        |            |
| 48   | <b>00 1161 486 0</b> | PIPE                             |            | 1        |            |
| 49   | <b>00 1147 003 0</b> | FLANGE                           |            | 1        |            |
| 50   | <b>60 0502 625 4</b> | SCREW                            | M8X30      | 3        |            |
| 51   | <b>00 1161 476 0</b> | TUBE                             |            | 1        |            |
| 52   | <b>00 1161 475 0</b> | FLAT SEAL                        |            | 1        |            |
| 53   | <b>00 1164 568 0</b> | TURBOCHARGER                     |            | 1        |            |
| 54   | <b>60 0502 144 9</b> | NUT                              |            | 3        |            |

**100 EXHAUST TURBO CHARGER 1)**

| Pos. | Part No.             | Description  | Dimension | Quantity | Conditions |
|------|----------------------|--------------|-----------|----------|------------|
| 55   | <b>00 1161 482 0</b> | STUD         |           | 3        |            |
| 56   | <b>00 1161 483 0</b> | CLAMP        |           | 2        |            |
| 57   | <b>00 1161 484 0</b> | GASKET       |           | 2        |            |
| 58   | <b>00 1161 485 0</b> | SLEEVE       |           | 1        |            |
| 59   | <b>00 1161 471 0</b> | CLAMP        |           | 2        |            |
| 60   | <b>00 1161 472 0</b> | SLEEVE       |           | 1        |            |
| 61   | <b>00 1161 470 0</b> | TURBOCHARGER |           | 1        |            |
| 62   | <b>60 0502 144 8</b> | SCREW        | M6X16     | 1        |            |

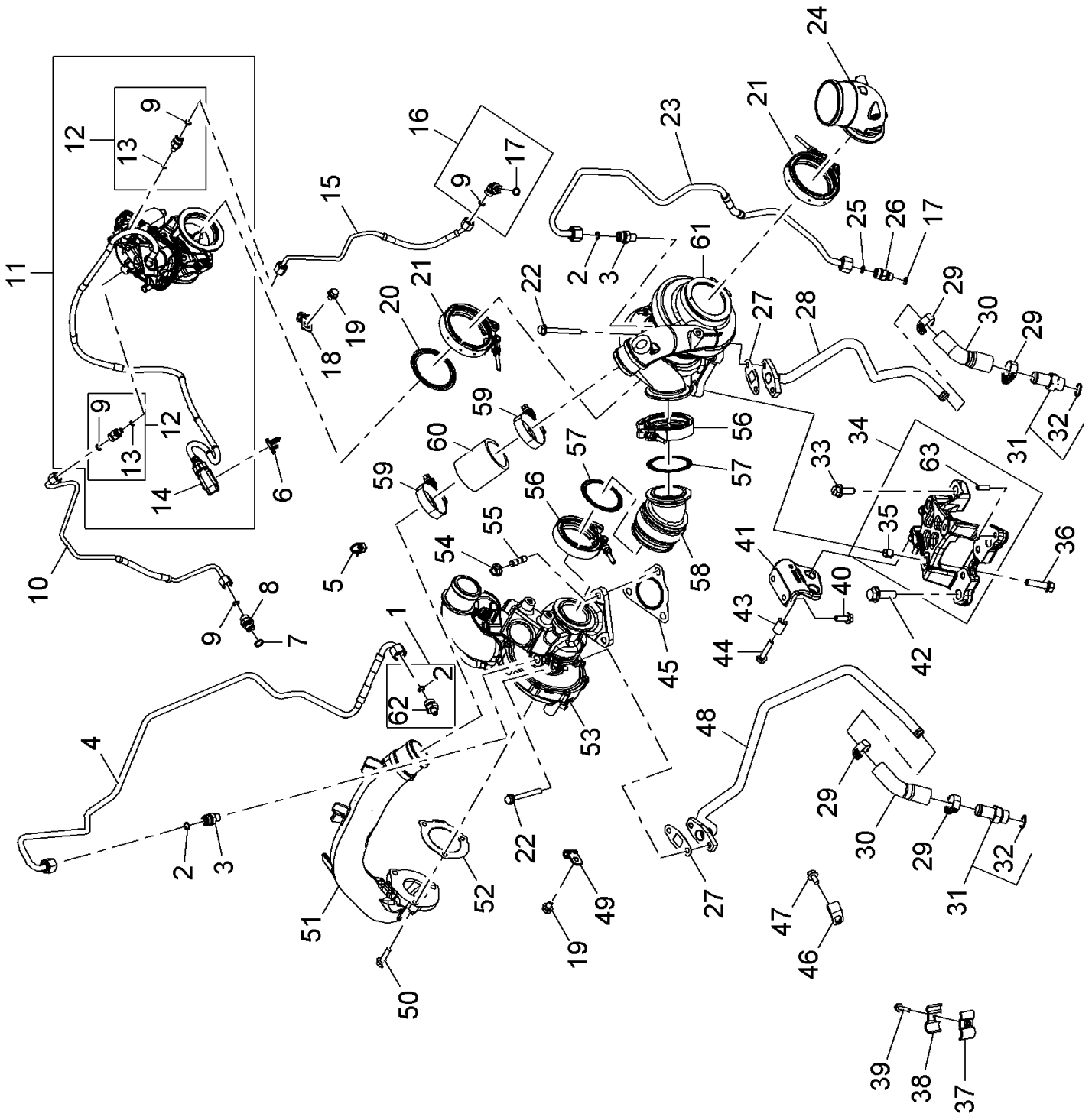
|           |                    |            |
|-----------|--------------------|------------|
| <b>1)</b> | <b>machine no.</b> | + 0        |
|           |                    | + K5600051 |
|           |                    | + K5600052 |
|           |                    | + K5600053 |
|           |                    | + K5600054 |
|           |                    | + K5600055 |
|           |                    | + K5600056 |
|           |                    | + K5600057 |
|           |                    | + K5600058 |
|           |                    | + K5600059 |



1

**100 EXHAUST TURBO CHARGER 1)**

| Pos.      | Part No.             | Description  | Dimension | Quantity | Conditions |
|-----------|----------------------|--------------|-----------|----------|------------|
| 1         | <b>00 1167 005 0</b> | SET OF SEALS |           | 1        |            |
| <b>1)</b> | <b>machine no.</b>   |              |           |          |            |
|           |                      |              |           |          | + 0        |
|           |                      |              |           |          | + K5600084 |
|           |                      |              |           |          | + K5600085 |
|           |                      |              |           |          | + K5600086 |
|           |                      |              |           |          | + K5600087 |
|           |                      |              |           |          | + K5600088 |
|           |                      |              |           |          | SEAL KIT   |





**100 EXHAUST TURBO CHARGER 1)**

| Pos. | Part No.             | Description                      | Dimension | Quantity | Conditions |
|------|----------------------|----------------------------------|-----------|----------|------------|
| 1    | <b>00 1135 056 0</b> | UNION CONNECTOR                  |           | 1        |            |
| 2    | <b>60 0502 158 5</b> | O-RING                           |           | 3        |            |
| 3    | <b>60 0502 158 4</b> | UNION CONNECTOR                  |           | 2        |            |
| 4    | <b>00 1954 084 0</b> | LINE                             |           | 1        |            |
| 5    | <b>ERS06</b>         | NOT DELIVERABLE AS A SINGLE PART |           | 4        |            |
| 6    | <b>ERS06</b>         | NOT DELIVERABLE AS A SINGLE PART |           | 1        |            |
| 7    | <b>60 0502 164 1</b> | O-RING                           |           | 1        |            |
| 8    | <b>00 1161 440 0</b> | UNION CONNECTOR                  |           | 1        |            |
| 9    | <b>60 0502 663 4</b> | O-RING                           |           | 4        |            |
| 10   | <b>00 1161 437 0</b> | PIPE                             |           | 1        |            |
| 11   | <b>00 1954 085 0</b> | OUTLET VALVE                     |           | 1        |            |
| 12   | <b>00 1161 438 0</b> | UNION CONNECTOR                  |           | 2        |            |
| 13   | <b>00 1161 439 0</b> | O-RING                           |           | 1        |            |
| 14   | <b>ERS06</b>         | NOT DELIVERABLE AS A SINGLE PART |           | 1        |            |
| 15   | <b>00 1161 445 0</b> | PIPE                             |           | 1        |            |
| 16   | <b>00 1161 446 0</b> | ELBOW CONNECTOR                  |           | 1        |            |
| 17   | <b>60 0502 156 7</b> | O-RING                           | 9,3X2,2   | 3        |            |
| 18   | <b>00 1161 469 0</b> | CLAMP                            |           | 1        |            |
| 19   | <b>00 1146 122 0</b> | SCREW                            | M8X12     | 2        |            |
| 20   | <b>00 1161 474 0</b> | GASKET                           |           | 1        |            |
| 21   | <b>00 1161 468 0</b> | CLAMP                            |           | 2        |            |
| 22   | <b>00 1146 125 0</b> | SCREW                            | M8X75     | 4        |            |
| 23   | <b>00 1954 086 0</b> | LINE                             |           | 1        |            |
| 24   | <b>00 1161 462 0</b> | SLEEVE                           |           | 1        |            |
| 25   | <b>60 0502 626 4</b> | O-RING                           |           | 1        |            |
| 26   | <b>00 1132 642 0</b> | UNION CONNECTOR                  |           | 1        |            |
| 27   | <b>60 0502 928 6</b> | GASKET                           |           | 2        |            |
| 28   | <b>00 1161 450 0</b> | PIPE                             |           | 1        |            |
| 29   | <b>00 1161 451 0</b> | CLAMP                            |           | 4        |            |
| 30   | <b>00 1161 453 0</b> | SLEEVE                           |           | 2        |            |
| 31   | <b>00 1146 059 0</b> | GREASE NIPPLE                    |           | 2        |            |
| 32   | <b>60 0502 160 4</b> | O-RING                           | 19X2,4    | 2        |            |
| 33   | <b>00 1145 957 0</b> | SCREW                            |           | 2        |            |
| 34   | <b>00 1164 914 0</b> | SUPPORT                          |           | 1        |            |
| 35   | <b>00 1146 697 0</b> | PIN                              |           | 2        |            |
| 36   | <b>00 1161 449 0</b> | STD SCREW                        |           | 3        |            |
| 37   | <b>00 1161 456 0</b> | FLANGE                           |           | 4        |            |
| 38   | <b>00 1161 459 0</b> | FLANGE                           |           | 4        |            |
| 39   | <b>00 1165 190 0</b> | STD SCREW                        |           | 4        |            |
| 40   | <b>00 1161 443 0</b> | STD SCREW                        |           | 2        |            |
| 41   | <b>00 1161 442 0</b> | SUPPORT                          |           | 1        |            |
| 42   | <b>60 0502 146 7</b> | SCREW                            | M12X40    | 1        |            |
| 43   | <b>00 1132 567 0</b> | BRACE                            |           | 2        |            |
| 44   | <b>00 1161 441 0</b> | STD SCREW                        |           | 2        |            |
| 45   | <b>00 1161 481 0</b> | FLAT SEAL                        |           | 1        |            |
| 46   | <b>00 1161 487 0</b> | CLAMP                            |           | 1        |            |
| 47   | <b>60 0502 154 7</b> | SCREW                            | M8X16     | 1        |            |
| 48   | <b>00 1161 486 0</b> | PIPE                             |           | 1        |            |
| 49   | <b>00 1147 003 0</b> | FLANGE                           |           | 1        |            |
| 50   | <b>60 0502 625 4</b> | SCREW                            | M8X30     | 3        |            |
| 51   | <b>00 1161 476 0</b> | TUBE                             |           | 1        |            |
| 52   | <b>00 1161 475 0</b> | FLAT SEAL                        |           | 1        |            |
| 53   | <b>00 1164 568 0</b> | TURBOCHARGER                     |           | 1        |            |
| 54   | <b>60 0502 144 9</b> | NUT                              |           | 3        |            |

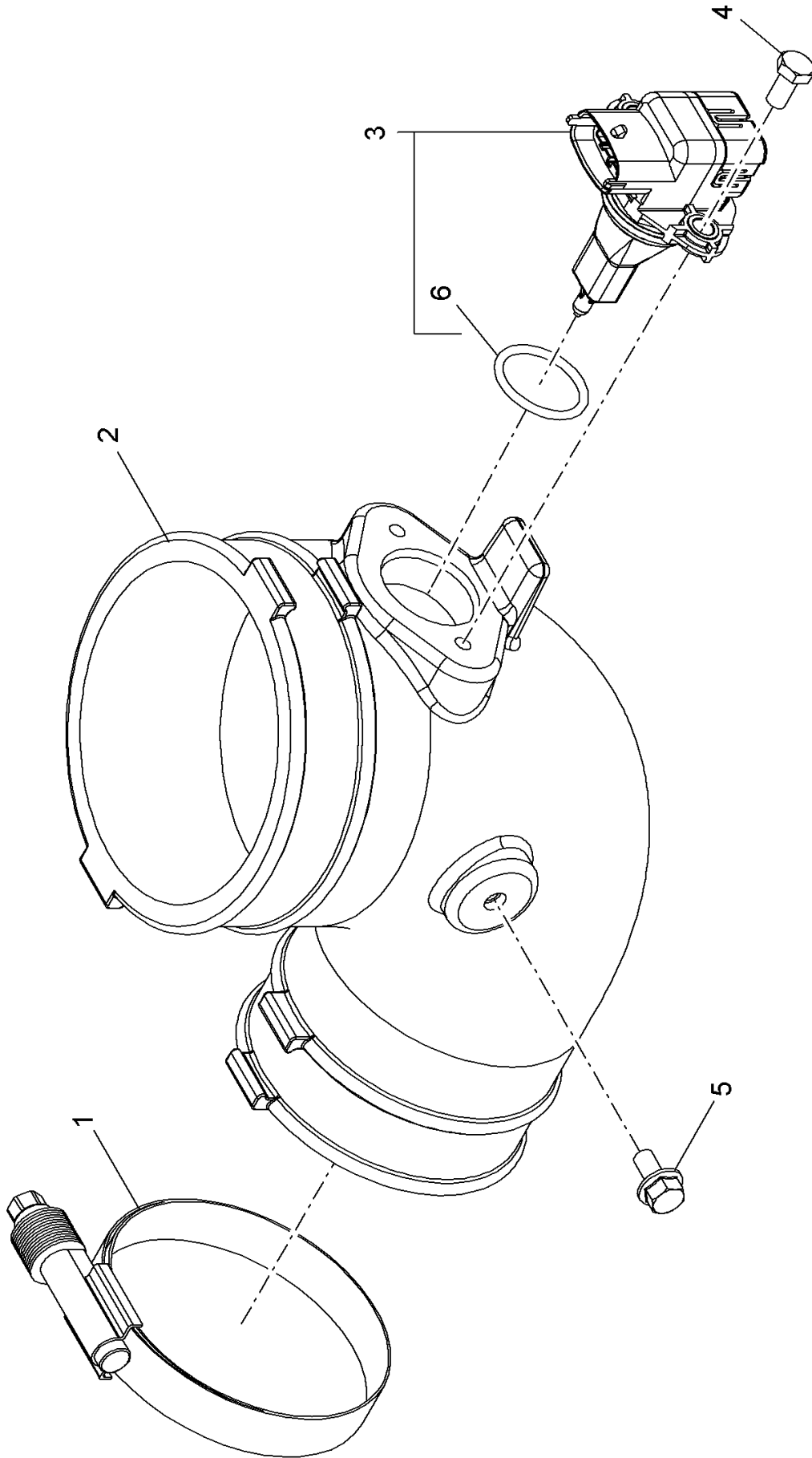
**100 EXHAUST TURBO CHARGER 1)**

| Pos. | Part No.             | Description  | Dimension | Quantity | Conditions |
|------|----------------------|--------------|-----------|----------|------------|
| 55   | <b>00 1161 482 0</b> | STUD         |           | 3        |            |
| 56   | <b>00 1161 483 0</b> | CLAMP        |           | 2        |            |
| 57   | <b>00 1161 484 0</b> | GASKET       |           | 2        |            |
| 58   | <b>00 1161 485 0</b> | SLEEVE       |           | 1        |            |
| 59   | <b>00 1161 471 0</b> | CLAMP        |           | 2        |            |
| 60   | <b>00 1161 472 0</b> | SLEEVE       |           | 1        |            |
| 61   | <b>00 1161 470 0</b> | TURBOCHARGER |           | 1        |            |
| 62   | <b>60 0502 144 8</b> | SCREW        | M6X16     | 1        |            |

---

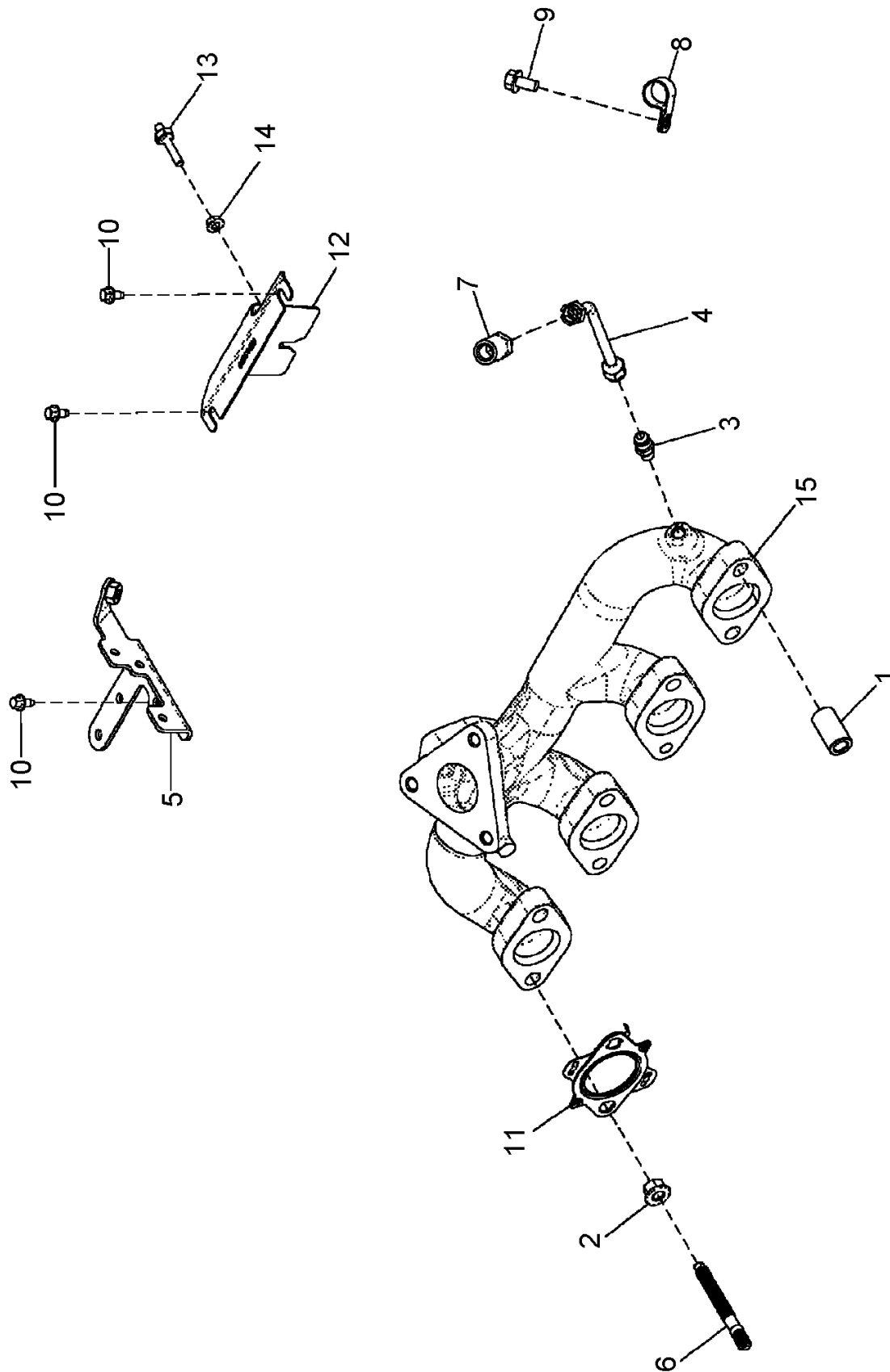
|           |                    |              |
|-----------|--------------------|--------------|
| <b>1)</b> | <b>machine no.</b> | + 0          |
|           |                    | + K5600084   |
|           |                    | + K5600085   |
|           |                    | + K5600086   |
|           |                    | + K5600087   |
|           |                    | + K5600088   |
|           |                    | TURBOCHARGER |

---



**100 EXHAUST TURBO CHARGER 1)**

| Pos.      | Part No.             | Description       | Dimension | Quantity   | Conditions |
|-----------|----------------------|-------------------|-----------|------------|------------|
| 1         | <b>00 1953 760 0</b> | HOSE CLAMP        |           | 1          |            |
| 2         | <b>00 1952 167 0</b> | HOSE              | TURBO     | 1          |            |
| 3         | <b>00 1145 363 0</b> | SENSOR            |           | 1          |            |
| 4         | <b>00 1953 754 0</b> | HEXAGON HEAD BOLT | M6X12     | 2          |            |
| 5         | <b>60 0502 163 2</b> | SCREW             | M6X12     | 1          |            |
| <hr/>     |                      |                   |           |            |            |
| <b>1)</b> | <b>machine no.</b>   |                   |           |            |            |
|           |                      |                   |           | + 0        |            |
|           |                      |                   |           | + K5600084 |            |
|           |                      |                   |           | + K5600085 |            |
|           |                      |                   |           | + K5600086 |            |
|           |                      |                   |           | + K5600087 |            |
|           |                      |                   |           | + K5600088 |            |
|           |                      |                   |           | HOSE       |            |



**120 EXHAUST MANIFOLD 1)**

| Pos. | Part No.             | Description     | Dimension                   | Quantity | Conditions |
|------|----------------------|-----------------|-----------------------------|----------|------------|
| 1    | <b>00 1148 638 0</b> | BRACE           |                             | 8        |            |
| 2    | <b>00 1150 286 0</b> | FLANGE NUT      |                             | 8        |            |
| 3    | <b>00 1145 978 0</b> | UNION CONNECTOR |                             | 1        |            |
| 4    | <b>00 1145 977 0</b> | TUBE            |                             | 1        |            |
| 5    | <b>00 1950 203 0</b> | BRACKET         | AUSPUFFKRUEM.<br>REPL. W.11 | 1        |            |
| 6    | <b>00 1161 642 0</b> | STUD            |                             | 8        |            |
| 7    | <b>00 1145 975 0</b> | GREASE NIPPLE   |                             | 1        |            |
| 8    | <b>00 1145 976 0</b> | CLAMP           |                             | 1        |            |
| 9    | <b>60 0502 154 7</b> | SCREW           | M8X16                       | 1        |            |
| 10   | <b>00 1164 941 0</b> | STD SCREW       | M6X12                       | 5        |            |
| 11   | <b>00 1153 585 0</b> | GASKET          |                             | 4        |            |
| 12   | <b>00 1161 492 0</b> | PROTECTOR       |                             | 1        |            |
| 13   | <b>00 1161 493 0</b> | STUD            |                             | 1        |            |
| 14   | <b>00 1145 969 0</b> | FLANGE NUT      |                             | 1        |            |
| 15   | <b>00 1161 489 0</b> | EXH MANIFOLD    |                             | 1        |            |

|           |                    |            |
|-----------|--------------------|------------|
| <b>1)</b> | <b>machine no.</b> | + 0        |
|           |                    | + K5600051 |
|           |                    | + K5600052 |
|           |                    | + K5600053 |
|           |                    | + K5600054 |
|           |                    | + K5600055 |
|           |                    | + K5600056 |
|           |                    | + K5600057 |
|           |                    | + K5600058 |
|           |                    | + K5600059 |

Thank you so much for reading.  
Please click the “Buy Now!”  
button below to download the  
complete manual.



After you pay.

You can download the most  
perfect and complete manual in  
the world immediately.

Our support email:

[ebooklibonline@outlook.com](mailto:ebooklibonline@outlook.com)