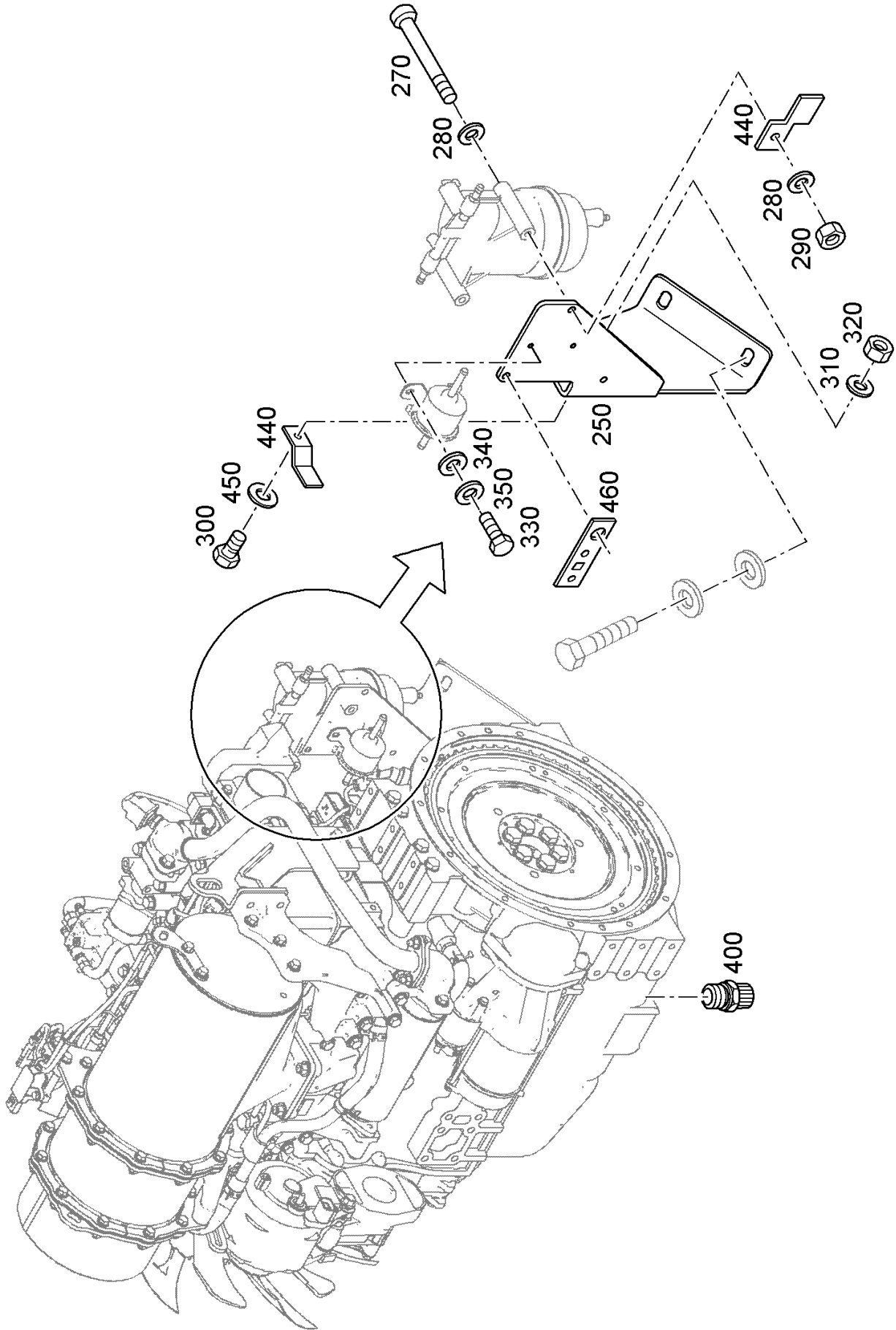


010 COMPLETE ENGINE 1)

Pos.	Part No.	Description	Dimension	Quantity	Conditions
20	00 1950 629 0	SUPPORT BRACKET	DIESELMOTOR	2	
30	00 1950 630 0	SUPPORT BRACKET	DIESELMOTOR	2	
40	00 0234 956 2	HEXAGON HEAD BOLT	M10X30-MKL	14	
41	00 0216 172 0	HEXAGON HEAD BOLT	M10X35	2	
45	00 1950 269 0	SUPPORT	MOTOR 535	1	
50	00 0249 310 0	LOCK WASHER	NL10SP - 10,7X21X2,5	16	
60	00 1951 276 0	TAPER BEARING		2	
90	00 1951 187 0	TAPER BEARING		2	
100	00 0211 032 0	HEXAGON HEAD BOLT	M10X25	4	
110	00 1950 303 0	SUPPORT	LUFTFILTER 535	1	
120	00 0470 171 0	FLAT WASHER	10 -10,5X20X2	4	
130	00 0249 310 0	LOCK WASHER	NL10SP - 10,7X21X2,5	16	
140	00 0233 414 0	HEXAGON HEAD BOLT	M10X20	12	
150	00 0249 328 0	LOCK WASHER	VS 10 -10,5X16X1,4X2	12	
160	00 0470 171 0	FLAT WASHER	10 -10,5X20X2	12	

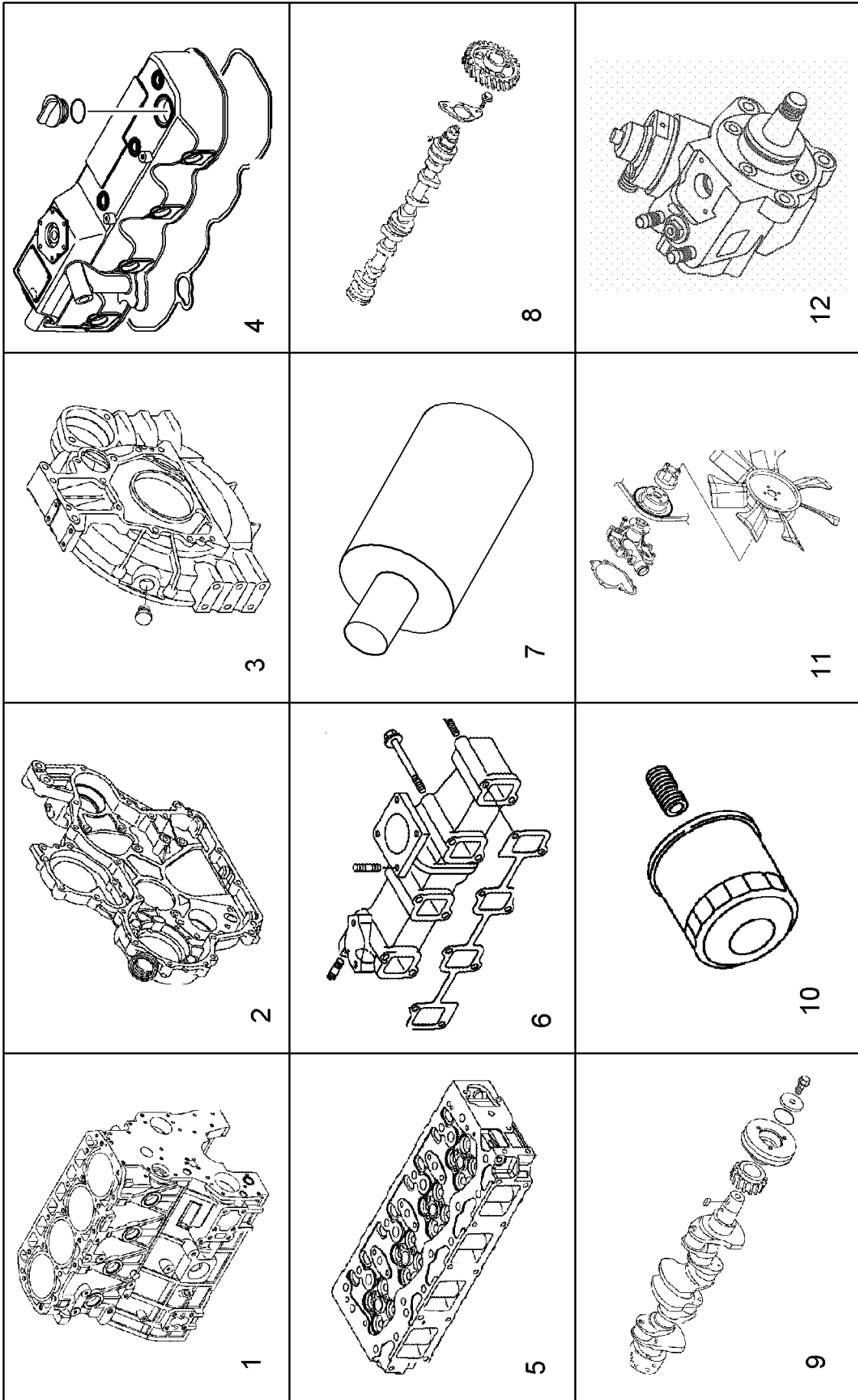
1)	machine no.	+ 0
		+ K5000201
		+ K5000202
		+ K5000203
		+ K5000204
		+ K5000205
		+ K5000206
		+ K5000207
		+ K5000208
		+ K5000209



010 COMPLETE ENGINE 1)

Pos.	Part No.	Description	Dimension	Quantity	Conditions
250	00 1950 695 0	SUPPORT BRACKET	ANBAUTEILE MOTOR	1	
270	00 0219 349 0	SOCKET HEAD SCREW	M 8X100	2	
280	00 0224 095 0	FLAT WASHER	8 -8,4X16X1,6	4	
290	77 0303 401 1	NUT	FIH M8X1,25	2	
300	00 0236 200 0	HEXAGON HEAD BOLT	M8X20	1	
310	00 1070 812 1	FLAT WASHER	8-8,4X30X2	1	
320	77 0303 401 1	NUT	FIH M8X1,25	1	
330	00 0237 465 0	HEXAGON HEAD BOLT	M6X16	2	
340	00 0213 646 0	FLAT WASHER	6,4 -6,4X17X3	2	
350	00 0249 326 0	LOCK WASHER	VS 6 -6,4X10X0,9X1,4	2	
400	00 1951 382 0	OELABLASSSCHRAUBE	M22X1,5X38X11	1	
440	00 1950 218 0	SUPPORT		2	
450	00 1070 812 1	FLAT WASHER	8-8,4X30X2	1	
460	00 1950 300 0	BRACKET	MOTOR 535	1	

1)	machine no.	+ 0
		+ K5000201
		+ K5000202
		+ K5000203
		+ K5000204
		+ K5000205
		+ K5000206
		+ K5000207
		+ K5000208
		+ K5000209



010 COMPLETE ENGINE 1)

Pos.	Part No.	Description	Dimension	Quantity	Conditions
1		CYLINDER BLOCK		1	2)
2		GEARBOX HOUSING		1	3)
3		SCHWUNGRADGEHAEUSE		1	4)
4		CYLINDER HEAD		1	5)
5		INLET MANIFOLD		1	6)
6		EXHAUST ELBOW		1	7)
7		FUEL PARTICLE FILTER		1	8)
8		CAM SHAFT		1	9)
9		CRANKSHAFT		1	10)
10		SCHMIEROELSYSTEM		1	11)
11		KUEHLSYSTEM		1	12)
12	ERS08	ORDER SINGLE PARTS		1	

1) machine no.

+ 0
+ K5000201
+ K5000202
+ K5000203
+ K5000204
+ K5000205
+ K5000206
+ K5000207
+ K5000208
+ K5000209

2) Remarks

-> BGZ 01 10 100 -> Drawing no.: 309849

3) Remarks

-> BGZ 01 10 120 -> Drawing no.: 316464

4) Remarks

-> BGZ 01 10 140 -> Drawing no.: 311964

5) Remarks

-> BGZ 01 20 100 -> Drawing no.: 311965

6) Remarks

-> BGZ 01 45 200 -> Drawing no.: 311973

7) Remarks

-> BGZ 01 40 120 -> Drawing no.: 311974

8) Remarks

-> BGZ 01 65 400 -> Drawing no.: 311975

9) Remarks

-> BGZ 01 20 180 -> Drawing no.: 316465

10) Remarks

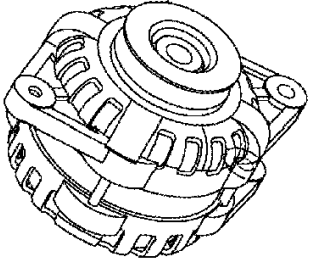
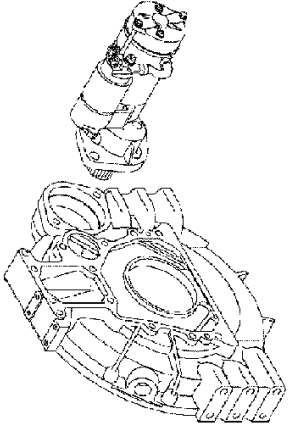
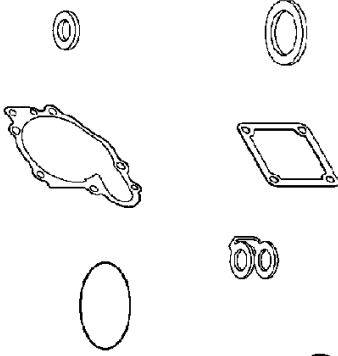
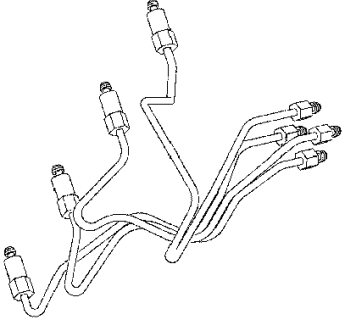
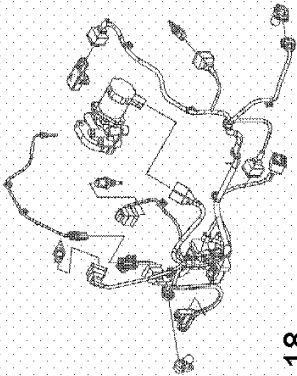
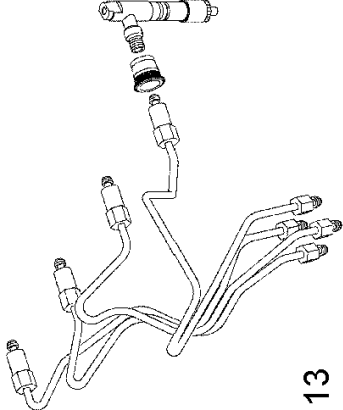
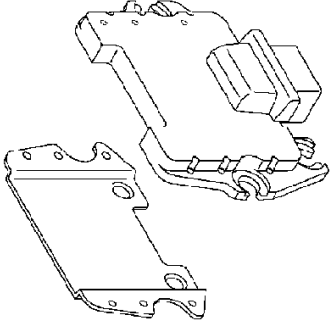
-> BGZ 01 15 140 -> Drawing no.: 311980

11) Remarks

-> BGZ 01 30 140 -> Drawing no.: 311981

12) Remarks

-> BGZ 01 35 220 -> Drawing no.: 311982

 <p>16</p>		
 <p>15</p>	 <p>19</p>	
 <p>14</p>	 <p>18</p>	
 <p>13</p>	 <p>17</p>	

010 COMPLETE ENGINE 1)

Pos.	Part No.	Description	Dimension	Quantity	Conditions
13		EINSPRITZANLAGE		1	2)
14		KRAFTSTOFFLEITUNGEN		1	3)
15	ERS08	ORDER SINGLE PARTS		1	
16	ERS11	PART HAS NOT BEEN INSTALLED		1	
17	ERS11	PART HAS NOT BEEN INSTALLED		1	
18		ELEKTRISCHE ANLAGE		1	4)
19	00 1950 790 0	SEAL KIT	ENGINE 46,2KW	1	

1) machine no.

+ 0
+ K5000201
+ K5000202
+ K5000203
+ K5000204
+ K5000205
+ K5000206
+ K5000207
+ K5000208
+ K5000209

2) Remarks

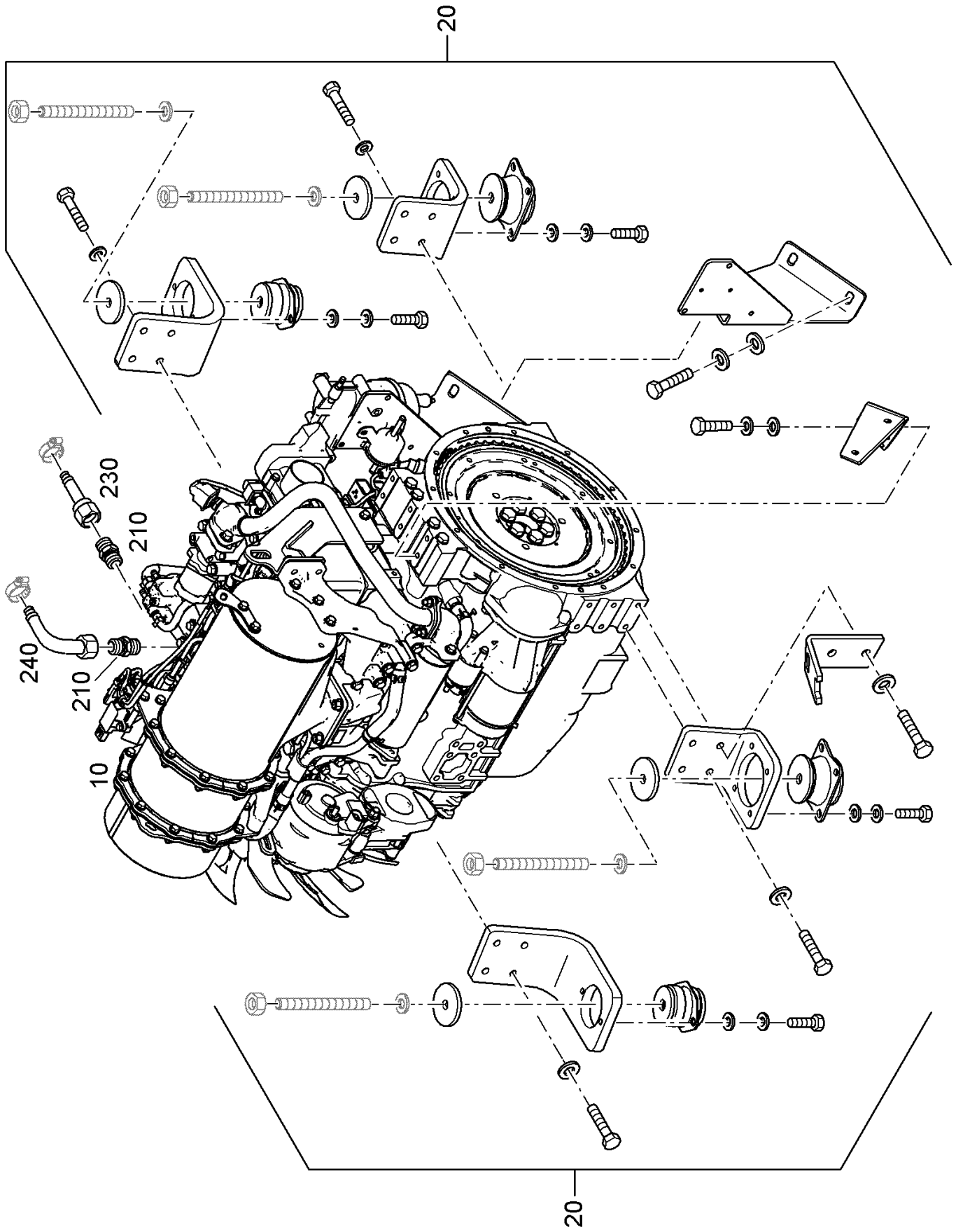
-> BGZ 01 25 240 -> Drawing no.: 315187

3) Remarks

-> BGZ 01 25 140 -> Drawing no.: 311986

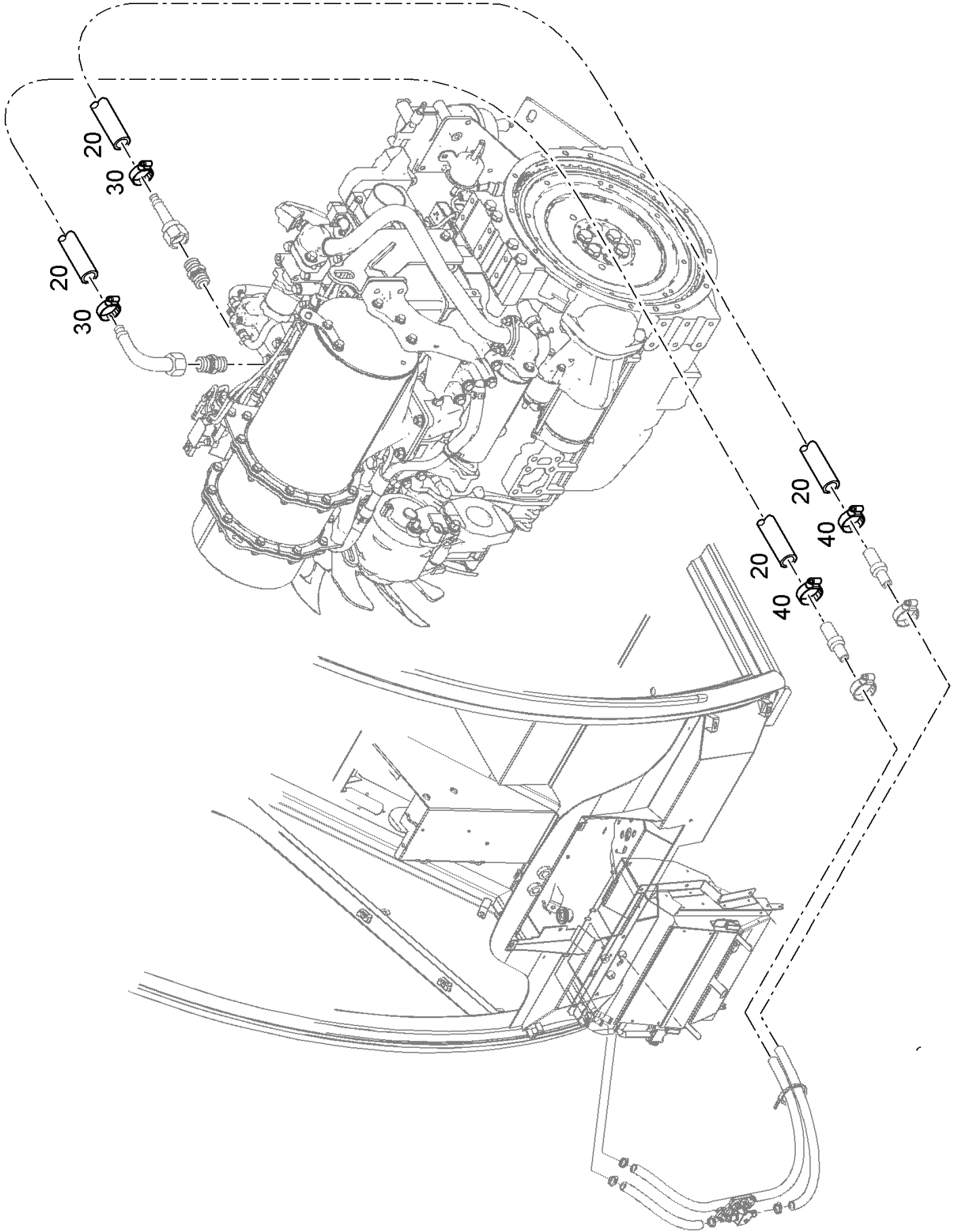
4) Remarks

-> BGZ 01 55 200 -> Drawing no.: 315190



010 COMPLETE ENGINE 1)

Pos.	Part No.	Description	Dimension	Quantity	Conditions
10	00 1954 467 0	DIESEL ENGINE	K50/105 ST V 46 KW	1	
20		ANBAUTEILE MOTOR		1	2)
210	00 1951 383 0	UNION	SDS L15 X G3//8 TYP C2		
230	00 1951 177 0	GREASE NIPPLE		1	
240	00 1951 979 0	HOSE FITTING	SWE90-L15-08 (N90-M22X1,	1	
1)	machine no.			+ 0 + K5000201 + K5000202 + K5000203 + K5000204 + K5000205 + K5000206 + K5000207 + K5000208 + K5000209	
2)	Remarks				-> BGZ 01 02 010 -> Drawing no.: 314742

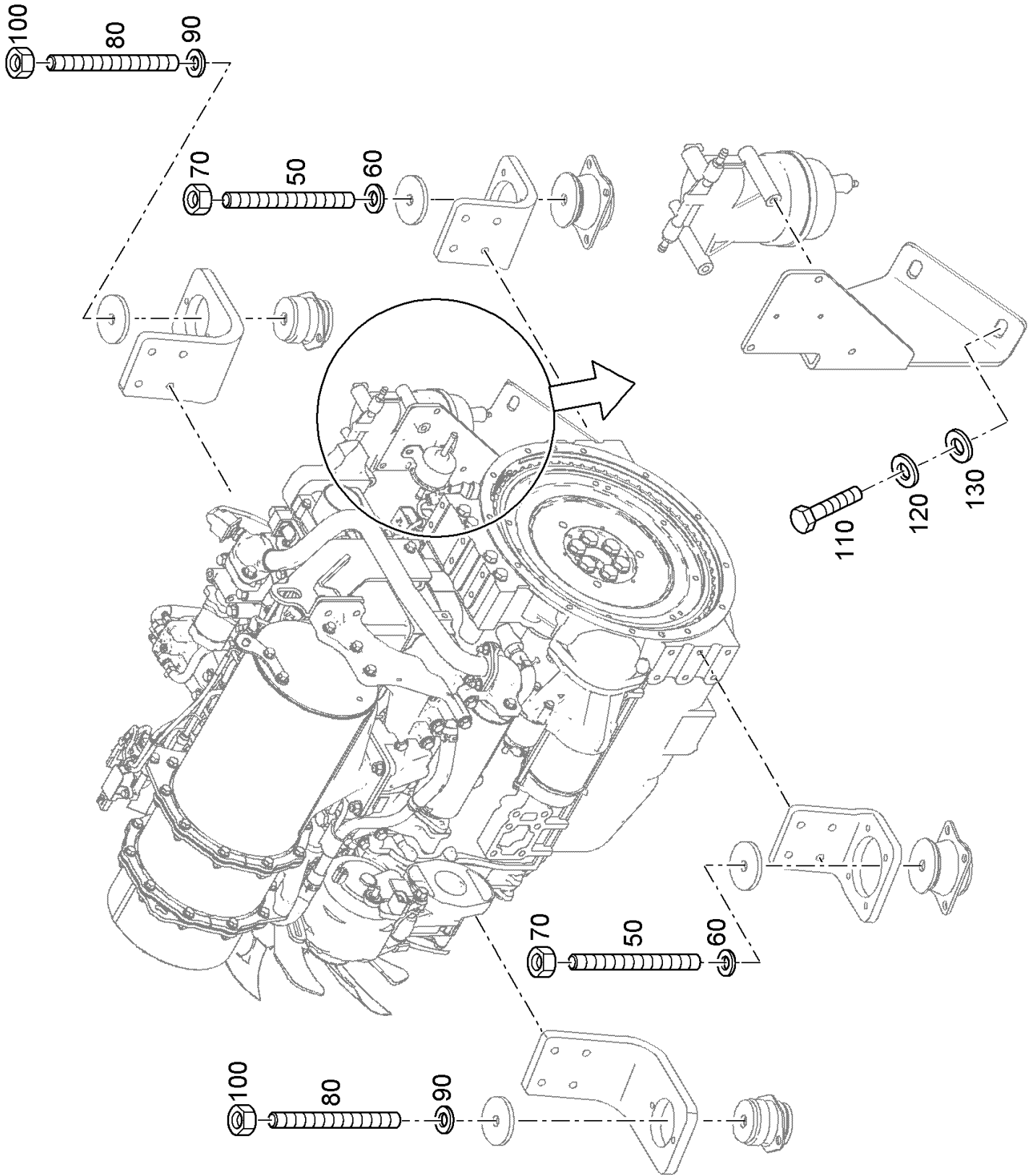


010 COMPLETE ENGINE 1)

Pos.	Part No.	Description	Dimension	Quantity	Conditions
20	00 0136 532 0	HOSE	A 15X3,5X15000	5	
30	00 1951 934 0	HOSE CLAMP	21 16-27X9	2	
40	00 1951 934 0	HOSE CLAMP	21 16-27X9	2	

1) machine no.

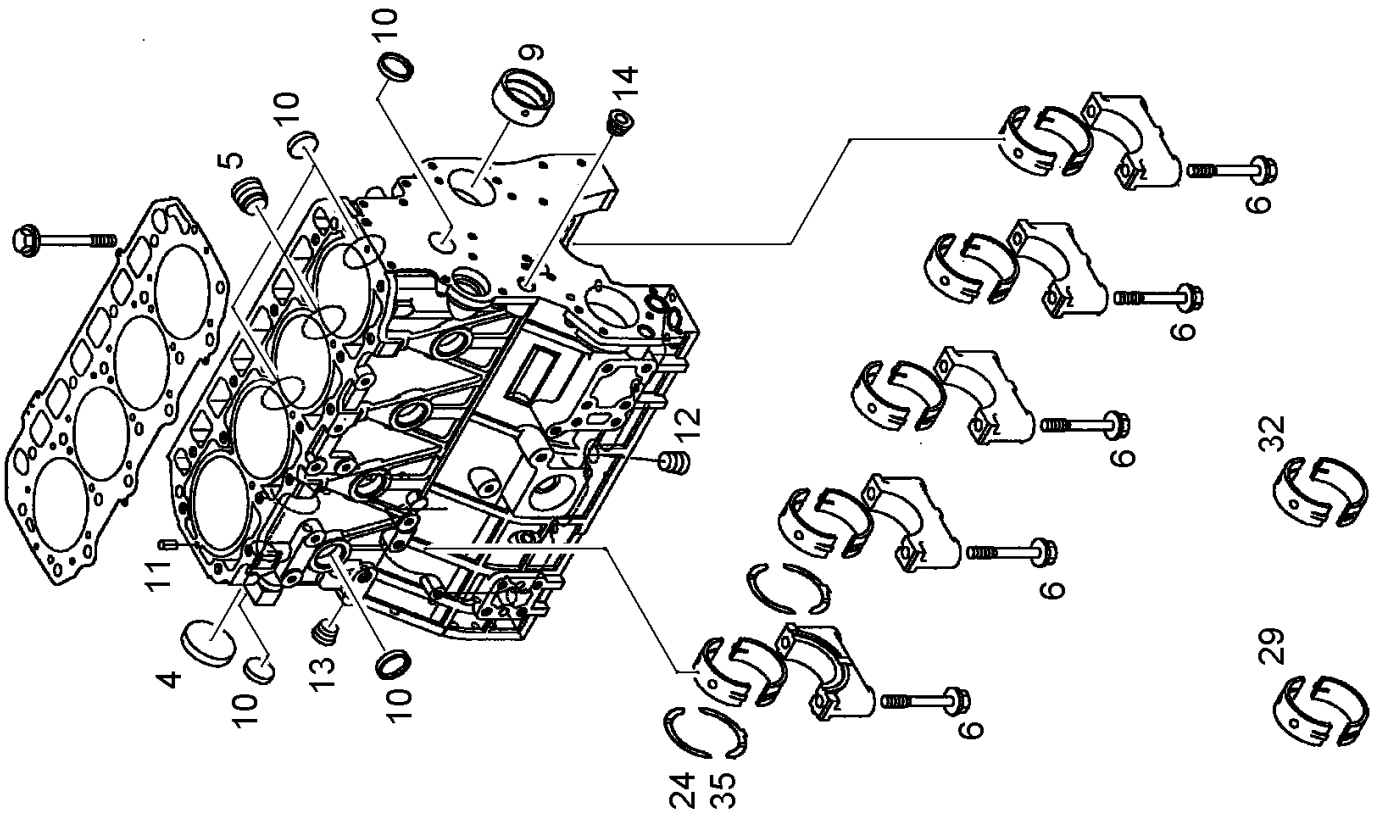
+ 0
+ K5000201
+ K5000202
+ K5000203
+ K5000204
+ K5000205
+ K5000206
+ K5000207
+ K5000208
+ K5000209



010 COMPLETE ENGINE 1)

Pos.	Part No.	Description	Dimension	Quantity	Conditions
50	60 0500 929 4	STUD BOLT	M16-M16X1,5X80	2	
60	00 0342 473 0	LOCK WASHER	NL16SP - 17X30,7X3,4	2	
70	00 0217 090 0	HEXAGONAL NUT	M16	2	
80	00 0224 309 0	STUD BOLT	M12X80	2	
90	00 0219 038 0	WASHER	NL12SP - 13X25,4X3,4	2	
100	00 0244 144 0	HEXAGONAL NUT	M12	2	
110	00 0233 456 0	HEXAGON HEAD BOLT	M12X30	2	
120	00 0249 329 1	LOCK WASHER	VS 12 -13X18X1,4X2,1	2	
130	00 0213 801 0	FLAT WASHER	12-13X24X2,5	2	

1)	machine no.	+ 0
		+ K5000201
		+ K5000202
		+ K5000203
		+ K5000204
		+ K5000205
		+ K5000206
		+ K5000207
		+ K5000208
		+ K5000209



Thank you so much for reading.
Please click the “Buy Now!”
button below to download the
complete manual.



After you pay.

You can download the most
perfect and complete manual in
the world immediately.

Our support email:

ebooklibonline@outlook.com