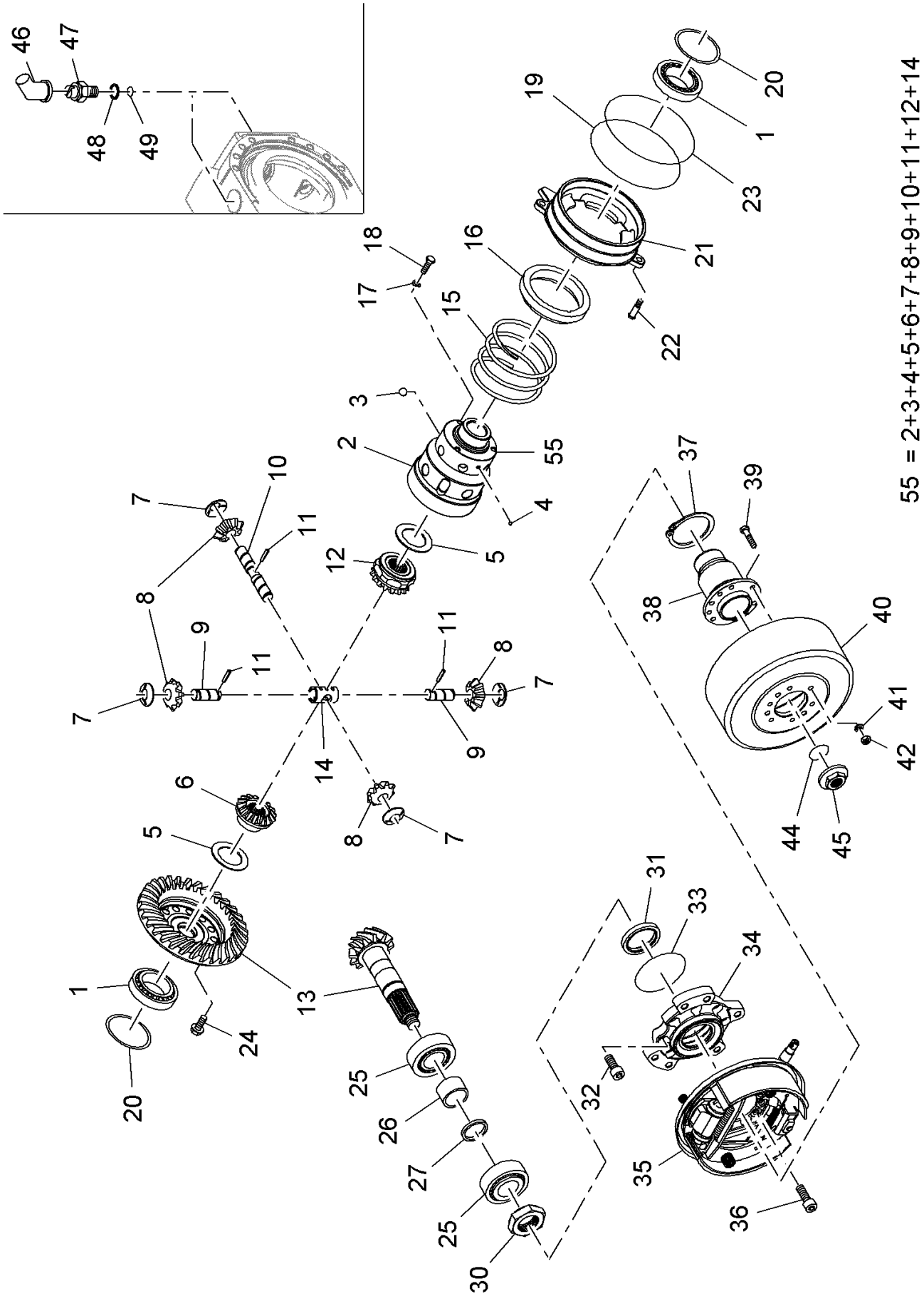


010 COMPLETE FRONT DRIVE AXLE 1)

Pos.	Part No.	Description	Dimension	Quantity	Conditions
2	60 0501 028 6	O-RING		4	
4	00 0238 043 1	SOCKET HEAD SCREW	M 8X 40	4	
5	00 1301 549 0	PLUG		1	
6	00 1301 559 0	PLUG		1	

1) machine no.

+ 0
+ K5100051
+ K5100052
+ K5100053
+ K5100054
+ K5100055
+ K5100056
+ K5100057
+ K5100058
+ K5100059



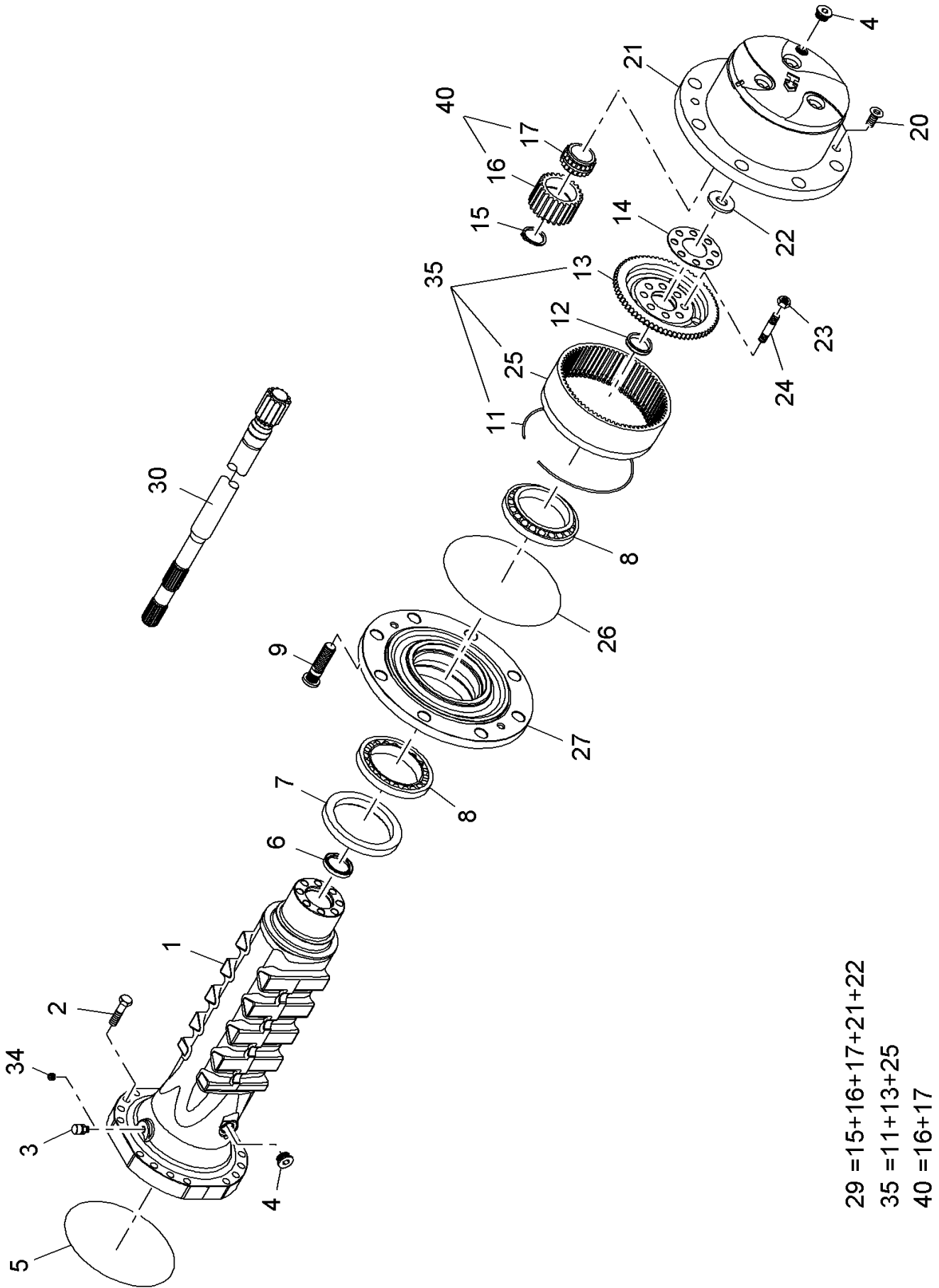
55 = 2+3+4+5+6+7+8+9+10+11+12+14
 +15+16+17+18+19+21+22+23

010 COMPLETE FRONT DRIVE AXLE 1)

Pos.	Part No.	Description	Dimension	Quantity	Conditions
1	ERS11	PART HAS NOT BEEN INSTALLED		2	
3	00 1300 681 0	BALL		6	
5	00 1955 949 0	THRUST WASHER		2	
6	00 1955 950 0	AUSGLEICHSWELLENRAD		1	
7	00 1955 951 0	THRUST WASHER		4	
8	00 1955 952 0	AUSGLEICHSKEGELRAD		4	
9	00 1955 953 0	PIN		2	
10	00 1955 955 0	PIN		1	
11	00 1955 954 0	PIN		3	
14	00 1955 956 0	CROSS PIECE		1	
17	00 1142 841 0	WASHER		3	
24	ERS11	PART HAS NOT BEEN INSTALLED		12	
25	00 1955 842 0	BEARING	DISTRIBUTOR GEARBOX	2	
35	ERS08	ORDER SINGLE PARTS		1	
42	00 0237 886 0	HEXAGONAL NUT	M10	8	
44	00 0211 882 0	O-RING	28 X 3 -N	1	
45	00 1301 317 0	NUT		1	
46	00 1300 680 0	GUARD CAP		1	
47	00 1300 679 0	LOCK		1	
48	00 1301 118 0	SEALING RING	A 19,4X23,9X1,45	1	
49	00 0211 691 0	O-RING	15,6 X1,78-N	1	

1) machine no.

+ 0
+ K5100051
+ K5100052
+ K5100053
+ K5100054
+ K5100055
+ K5100056
+ K5100057
+ K5100058
+ K5100059



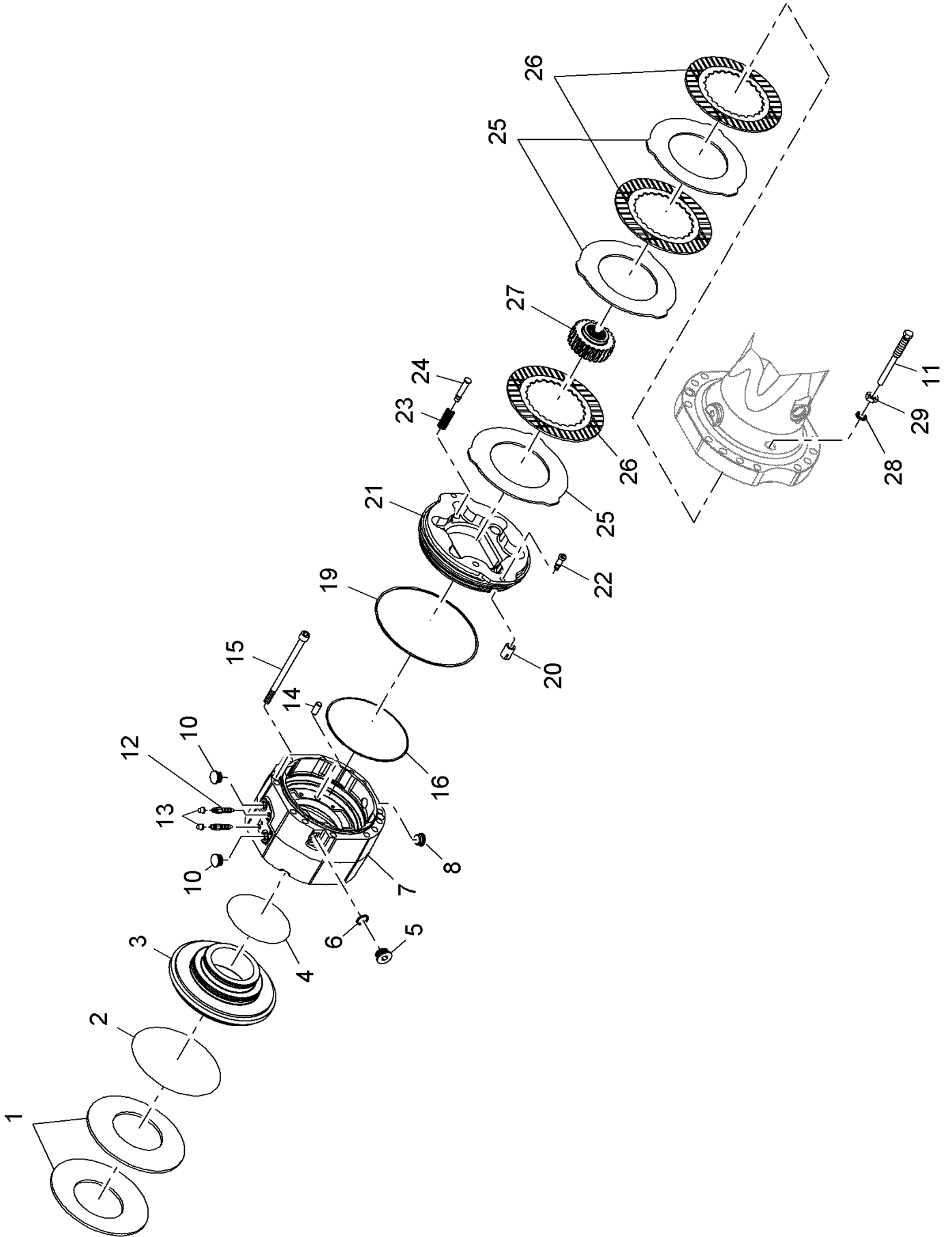
29 = 15+16+17+21+22
35 = 11+13+25
40 = 16+17

010 COMPLETE FRONT DRIVE AXLE 1)

Pos.	Part No.	Description	Dimension	Quantity	Conditions
3	00 1952 612 0	BREATHER		1	
4	00 1301 549 0	PLUG		4	
5	60 0501 028 6	O-RING		2	
7	60 0503 058 7	CASSETTE SEAL	150X180X14,5/16	2	
8	60 0502 615 5	TA.ROLLER BEARING		4	
9	00 1955 260 0	WHEEL BOLT		16	
11	00 1163 626 0	INT RETAINING RING		2	
13	00 1955 161 0	HOLLOW WHEEL SUPPORT		2	
15	00 0214 470 0	CIRCLIP	38X2,5	6	
16	00 1955 162 0	PLANETARY GEAR		6	
20	00 1301 507 0	COUNTERSUNK BOLT		4	
21	ERS11	PART HAS NOT BEEN INSTALLED		2	
23	00 1163 703 0	NUT		8	
24	00 1166 486 0	STUD		8	
25	00 1955 160 0	TOOTHED RIM		2	
26	00 0211 930 0	O-RING	215,57X2,62-NBR 70	2	
27	ERS11	PART HAS NOT BEEN INSTALLED		2	
29	ERS11	PART HAS NOT BEEN INSTALLED		2	
34	00 0324 052 0	PLUG	M10X1 DIN 906	1	
35	00 1300 701 0	HOLLOW WHEEL SUPPORT		2	
40	ERS11	PART HAS NOT BEEN INSTALLED		6	

1) machine no.

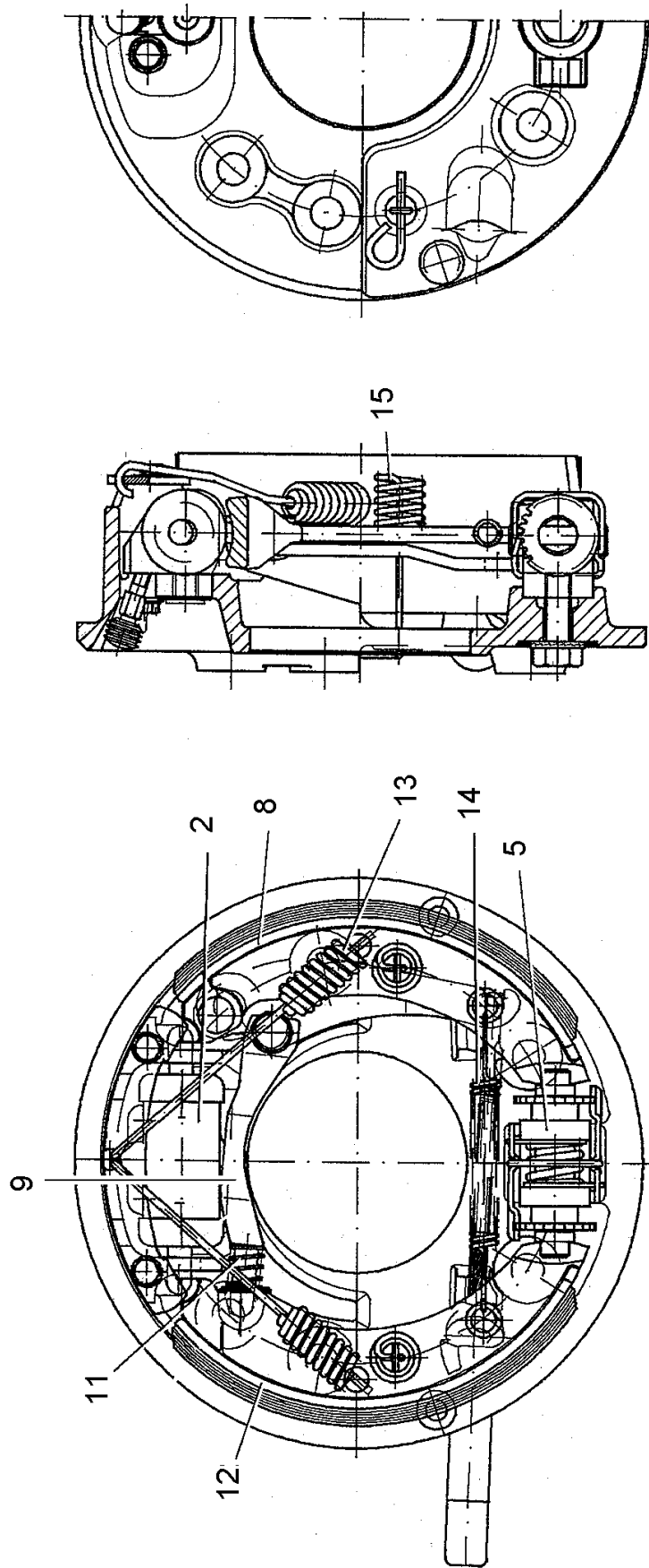
+ 0
+ K5100051
+ K5100052
+ K5100053
+ K5100054
+ K5100055
+ K5100056
+ K5100057
+ K5100058
+ K5100059



010 COMPLETE FRONT DRIVE AXLE 1)

Pos.	Part No.	Description	Dimension	Quantity	Conditions
1	00 1953 238 0	SPRING		4	
2	ERS11	PART HAS NOT BEEN INSTALLED		2	
8	00 1301 559 0	PLUG		2	
10	00 1953 252 0	MAGNETIC PLUG	PLIH-M22X1,5-TYPE F W. M	4	
12	00 1301 077 0	SCREW		4	
13	00 1163 422 0	COVER		4	
20	00 1142 893 0	SPRING		6	
28	00 1301 423 0	WASHER		4	
29	00 1301 328 0	NUT		4	

1)	machine no.	+ 0
		+ K5100051
		+ K5100052
		+ K5100053
		+ K5100054
		+ K5100055
		+ K5100056
		+ K5100057
		+ K5100058
		+ K5100059



010 COMPLETE FRONT DRIVE AXLE 1)

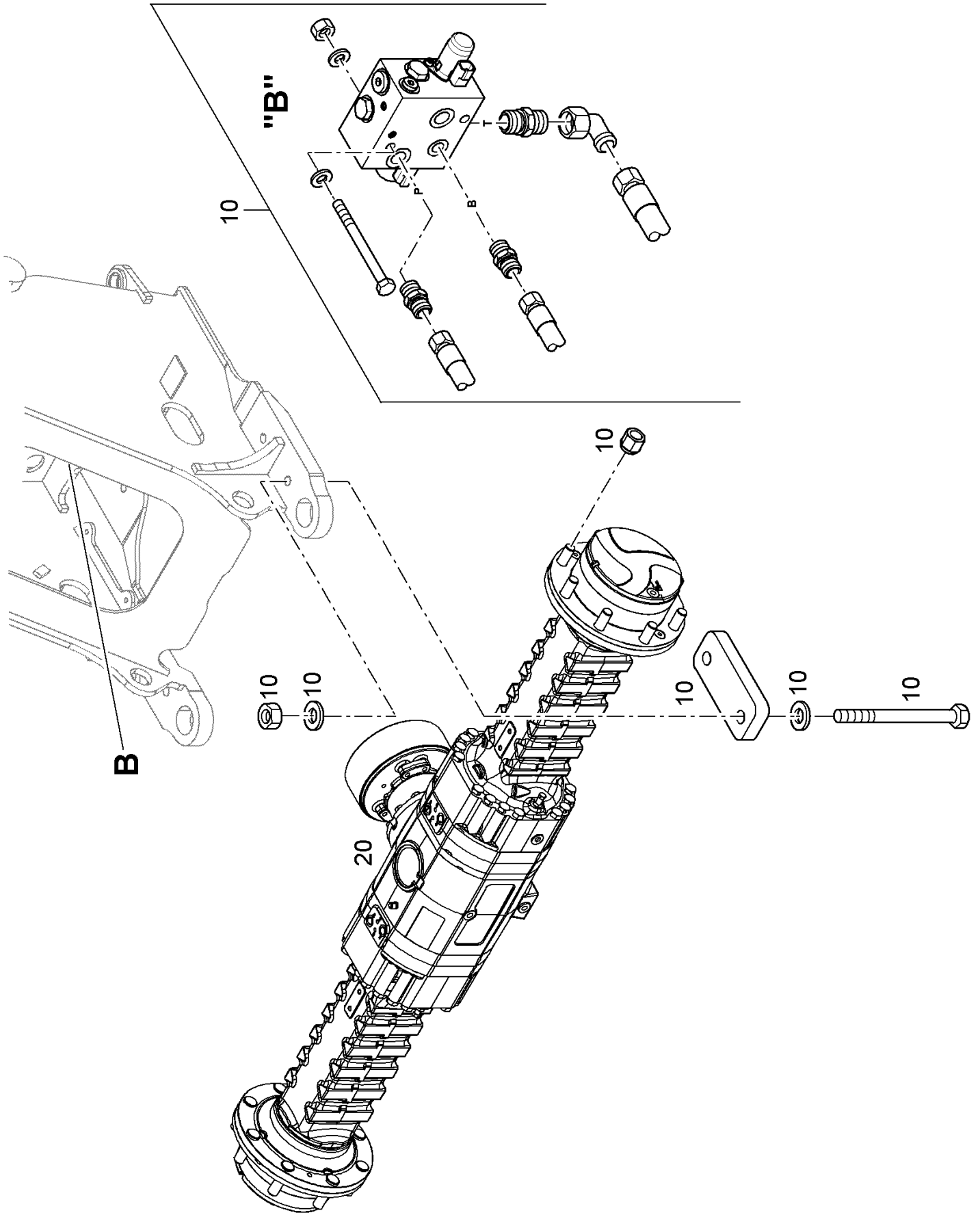
Pos.	Part No.	Description	Dimension	Quantity	Conditions
5	ERS11	PART HAS NOT BEEN INSTALLED		1	
8	ERS11	PART HAS NOT BEEN INSTALLED		1	
1)	machine no.				
			+ 0		
			+ K5100051		
			+ K5100052		
			+ K5100053		
			+ K5100054		
			+ K5100055		
			+ K5100056		
			+ K5100057		
			+ K5100058		
			+ K5100059		

OHNE BILD
WITHOUT ILLUSTRATION
SANS PLANCHE

010 COMPLETE FRONT DRIVE AXLE 1)

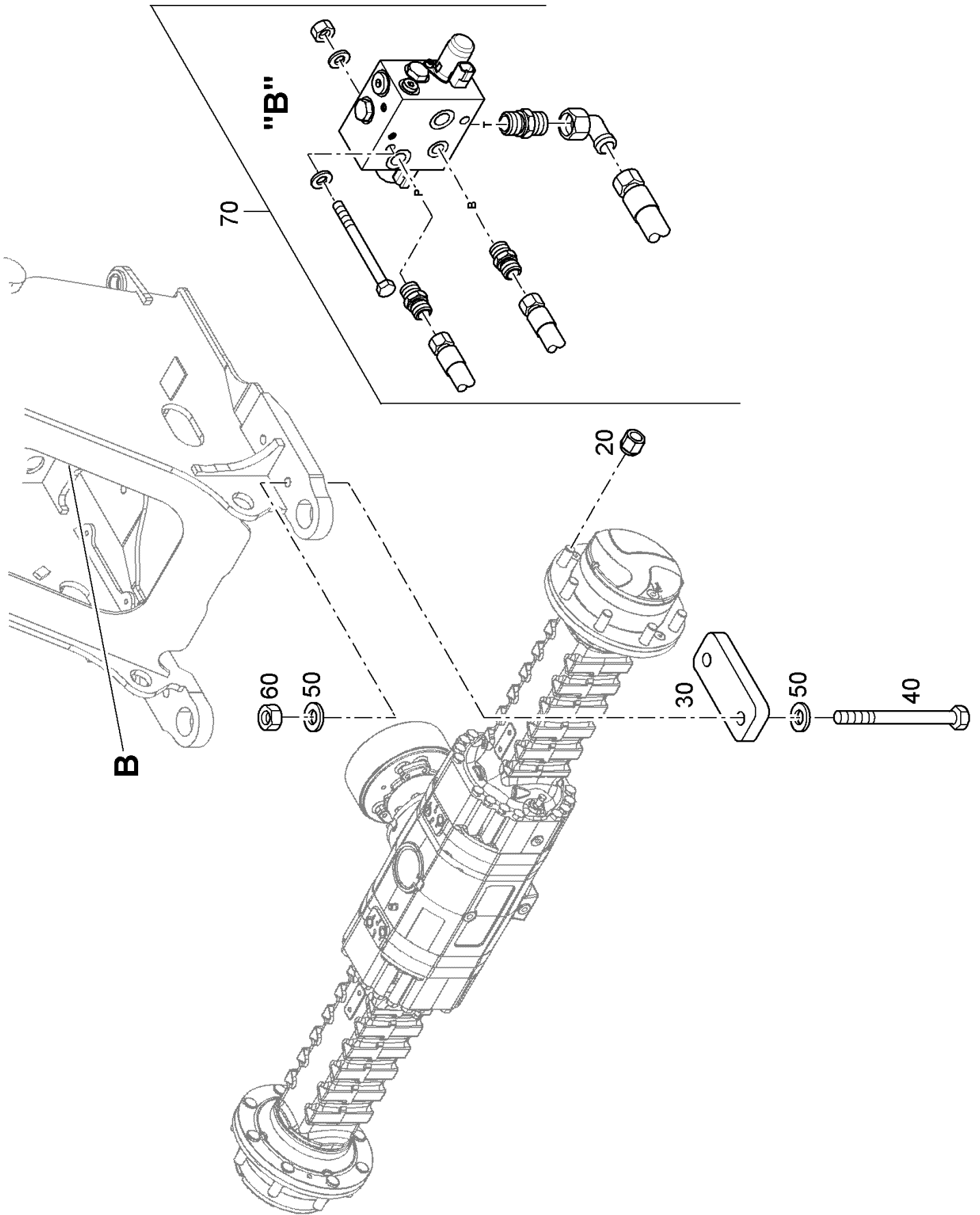
1) machine no.

+ 0
+ K5100051
+ K5100052
+ K5100053
+ K5100054
+ K5100055
+ K5100056
+ K5100057
+ K5100058
+ K5100059



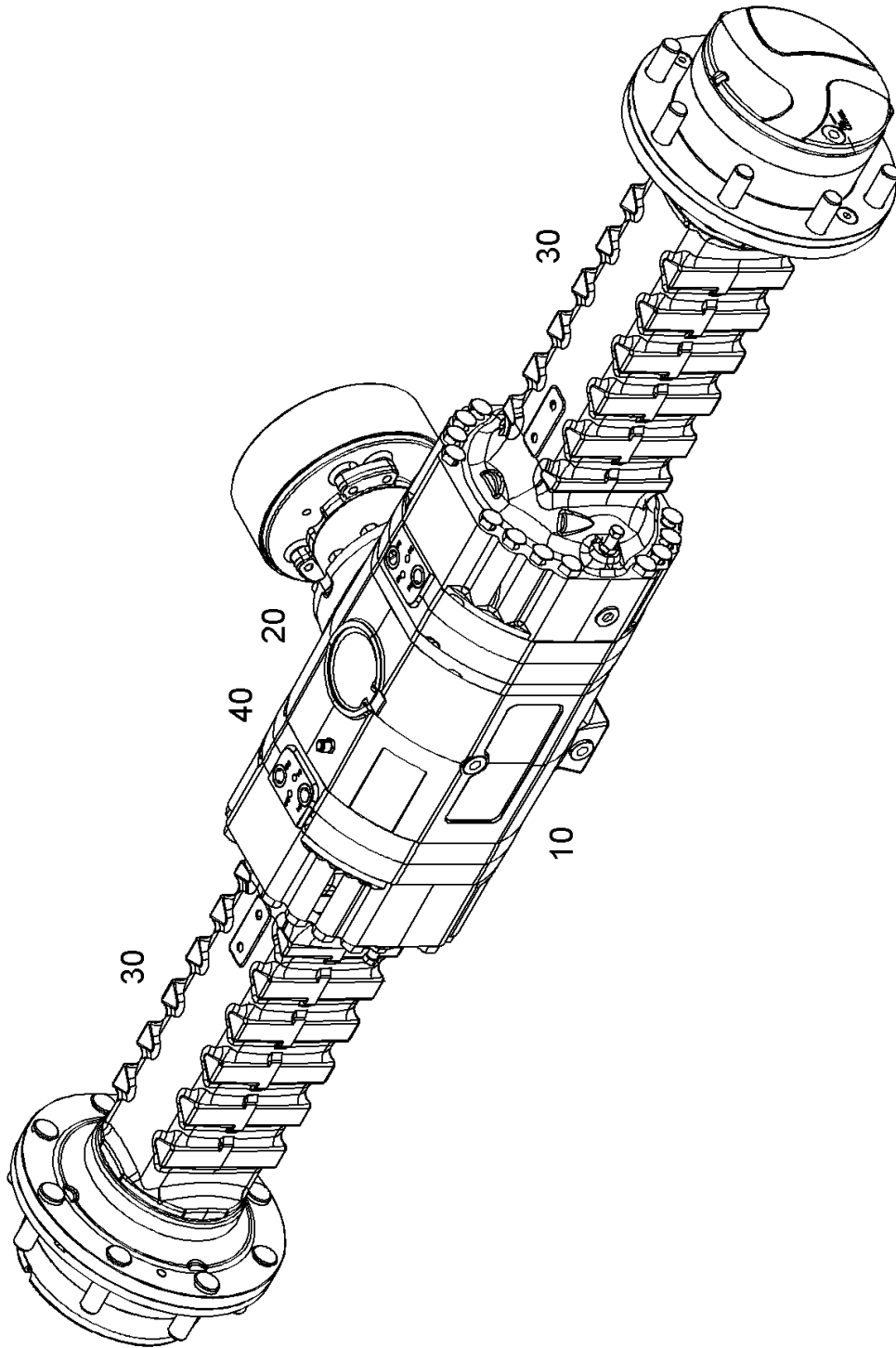
010 COMPLETE FRONT DRIVE AXLE 1)

Pos.	Part No.	Description	Dimension	Quantity	Conditions
10		VORDERACHSE EINBAU		1	2)
20	ERS11	PART HAS NOT BEEN INSTALLED		1	
1)	machine no.		+ 0 FRONT AXLE INSTALLATION		
2)	Remarks		-> BGZ 03 16 010 -> Drawing no.: 305850		



010 COMPLETE FRONT DRIVE AXLE 1)

Pos.	Part No.	Description	Dimension	Quantity	Conditions
20	00 0223 008 0	BALL NUT	A22-M22X1,5	16	
30	ERS11	PART HAS NOT BEEN INSTALLED		2	
40	ERS11	PART HAS NOT BEEN INSTALLED		4	
50	00 0217 471 0	WASHER	24-25X44X4	8	
60	ERS11	PART HAS NOT BEEN INSTALLED		4	
70	ERS11	PART HAS NOT BEEN INSTALLED		1	
<hr/>					
1)	machine no.		+ 0		
			FRONT AXLE INSTALLATION		



Thank you so much for reading.
Please click the “Buy Now!”
button below to download the
complete manual.



After you pay.

You can download the most
perfect and complete manual in
the world immediately.

Our support email:

ebooklibonline@outlook.com