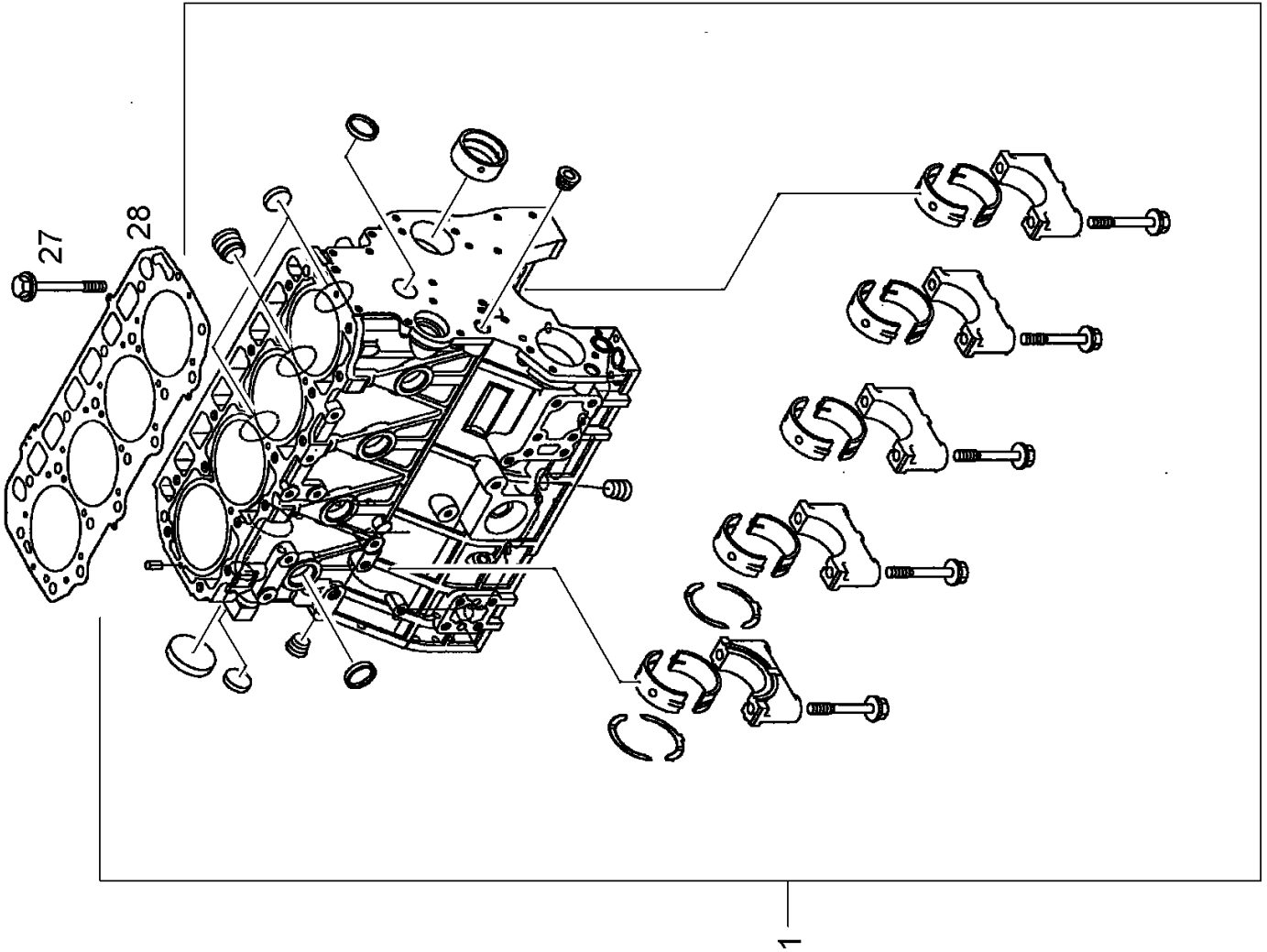


100 CRANKCASE 1)

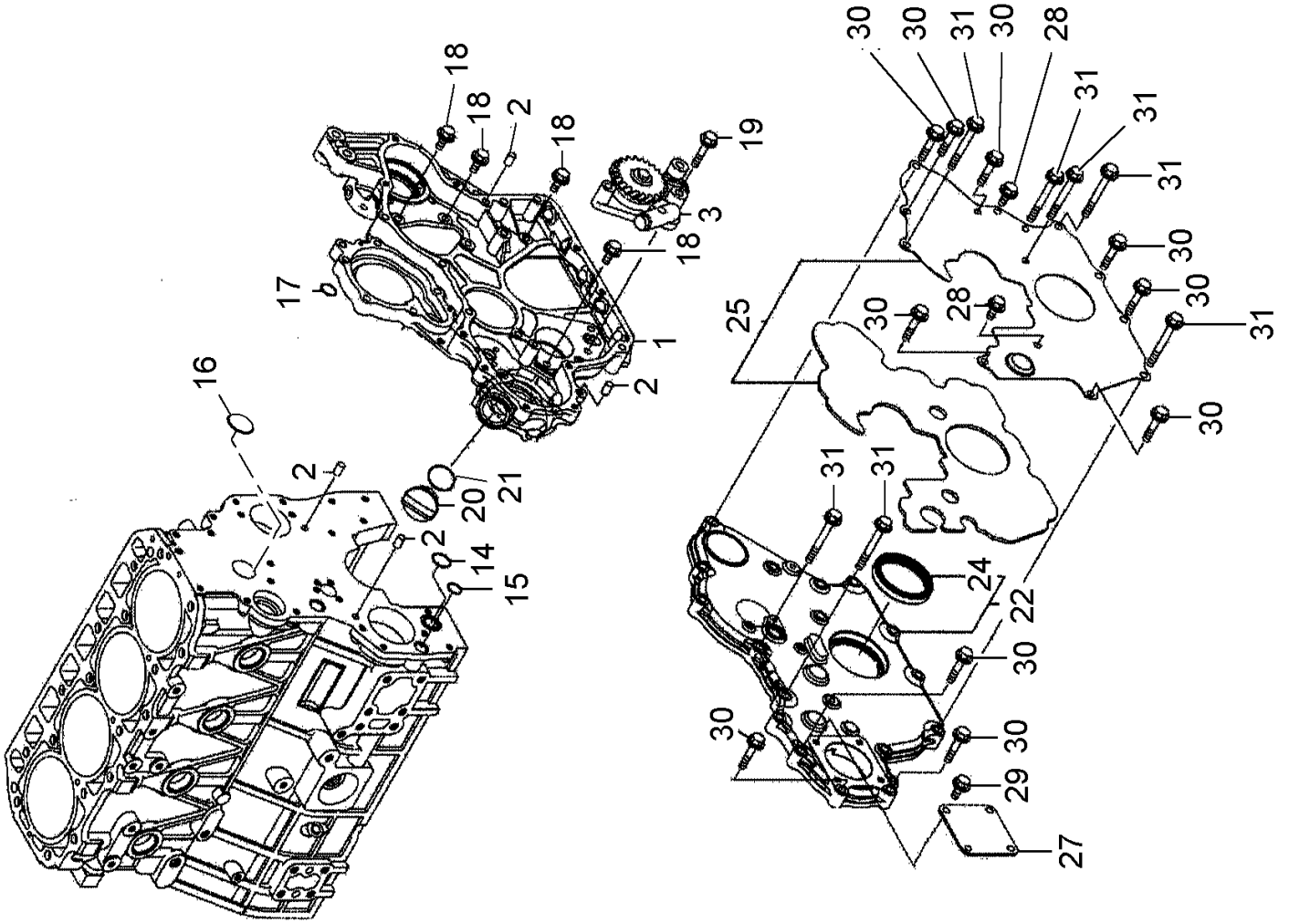
Pos.	Part No.	Description	Dimension	Quantity	Conditions
4	00 1951 188 0	PLUG		1	
5	00 1951 189 0	SCREW PLUG		1	
6	00 1951 190 0	HEXAGON HEAD BOLT		10	
9	00 1951 191 0	BUSHING		1	
10	00 1951 192 0	PLUG		8	
11	00 1951 193 0	SPRING PIN		2	
12	00 1951 194 0	SCREW PLUG		1	
13	00 1951 194 0	SCREW PLUG		1	
14	00 1951 194 0	SCREW PLUG		1	
24	00 1951 195 0	BEARING/CRANK		2	
29	00 1951 076 0	BEARING/CRANK		5	
32	00 1951 077 0	BEARING/CRANK		5	
35	00 1951 197 0	BEARING/CRANK		2	

1)	machine no.	+ 0
		+ K5200113
		+ K5200201
		+ K5200202
		+ K5200203
		+ K5200204
		+ K5200205
		+ K5200206
		+ K5200207
		+ K5200208



100 CRANKCASE 1)

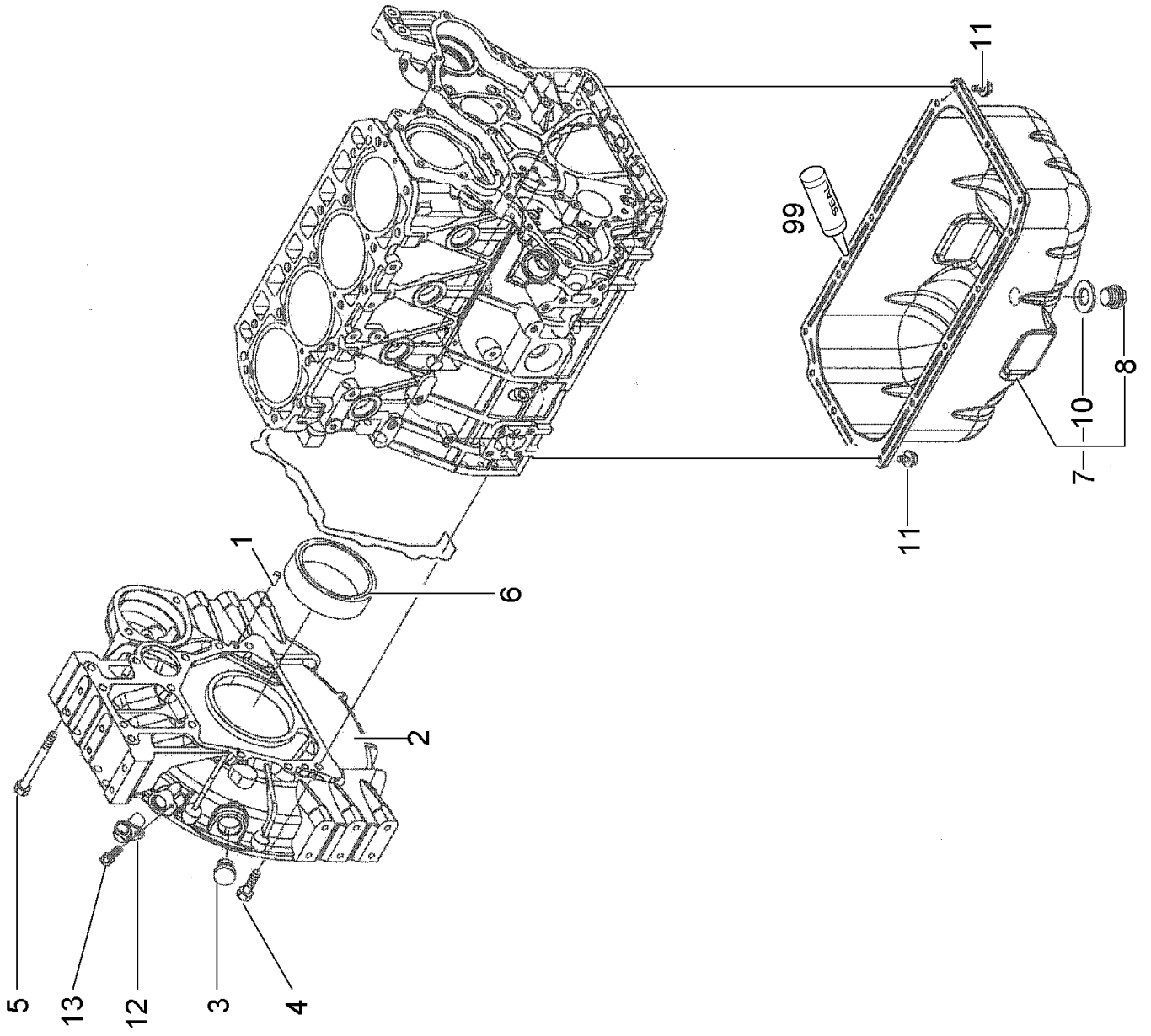
Pos.	Part No.	Description	Dimension	Quantity	Conditions
1	ERS05	NO LONGER AVAILABLE		1	
27	00 1951 196 0	HEXAGON HEAD BOLT		18	
28	00 1951 277 0	CYLINDER HEAD GASKET		1	
<hr/>					
1)	machine no.				
			+ 0		
			+ K5200113		
			+ K5200201		
			+ K5200202		
			+ K5200203		
			+ K5200204		
			+ K5200205		
			+ K5200206		
			+ K5200207		
			+ K5200208		



120 TIMING CASE 1)

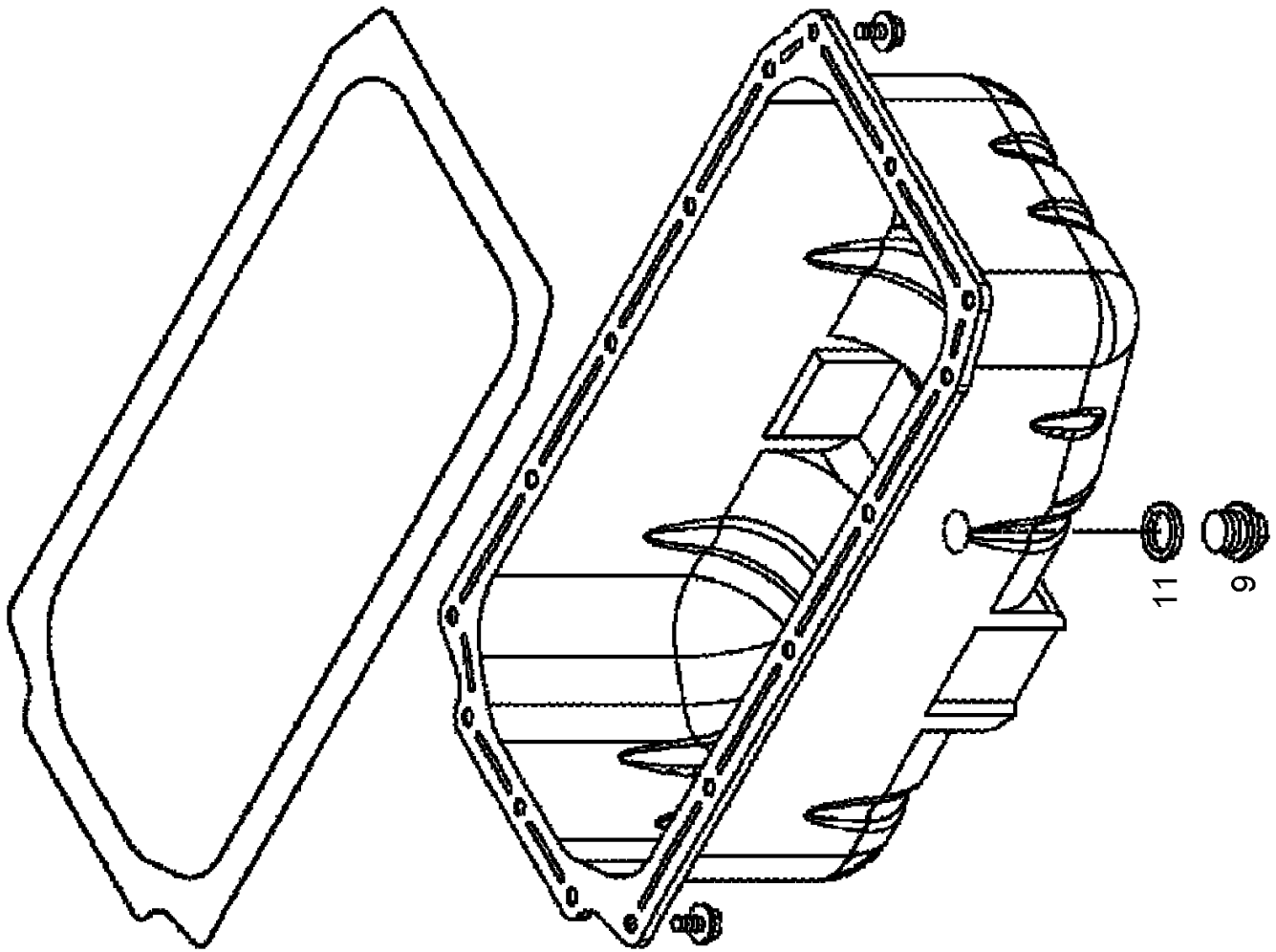
Pos.	Part No.	Description	Dimension	Quantity	Conditions
1	00 1951 103 0	GEARBOX HOUSING		1	
2	00 1951 198 0	PIN		4	
3	00 1951 078 0	PUMP	OEL	1	
14	00 1951 199 0	O-RING		1	
15	00 1951 200 0	O-RING		1	
16	ERS11	PART HAS NOT BEEN INSTALLED		1	
17	00 1951 201 0	O-RING		1	
18	00 1951 202 0	HEXAGON HEAD BOLT	M8 X 16	4	
19	00 1951 204 0	HEXAGON HEAD BOLT		3	
20	00 1951 206 0	THREADED CAP		1	
21	00 1951 207 0	O-RING		1	
22	00 1951 278 0	COVERING		1	
24	00 1951 210 0	GASKET		1	
25	00 1951 279 0	COVERING		1	
27	00 1951 280 0	COVERING		1	
28	00 1951 202 0	HEXAGON HEAD BOLT	M8 X 16	2	
29	00 1951 202 0	HEXAGON HEAD BOLT	M8 X 16	4	
30	00 1951 211 0	HEXAGON HEAD BOLT		10	
31	00 1951 212 0	HEXAGON HEAD BOLT		7	

1) machine no.	+ 0
	+ K5200113
	+ K5200201
	+ K5200202
	+ K5200203
	+ K5200204
	+ K5200205
	+ K5200206
	+ K5200207
	+ K5200208



140 FLYWHEEL HOUSING 1)

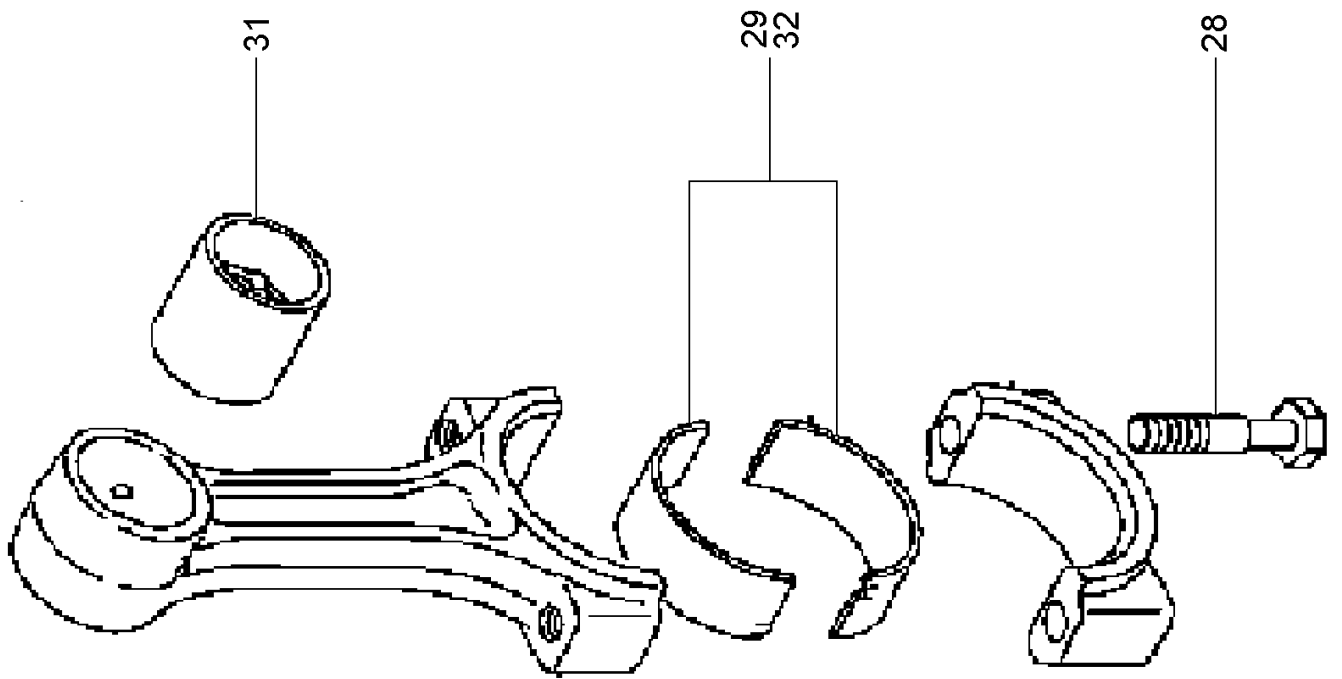
Pos.	Part No.	Description	Dimension	Quantity	Conditions
1	00 1951 198 0	PIN		2	
2	00 1951 104 0	HOUSING		1	
3	00 1951 213 0	CAP		1	
4	00 1951 214 0	HEXAGON HEAD BOLT		9	
5	00 1951 281 0	HEXAGON HEAD BOLT		4	
6	00 1951 215 0	GASKET		1	
7	00 1951 079 0	OIL SUMP	W. GASKET + PLUG	1	
8	00 1951 216 0	OELABLASSSCHRAUBE	OELWANNE	1	
10	00 1951 217 0	GASKET		1	
11	00 1951 218 0	HEXAGON HEAD BOLT	M08X12	16	
12	00 1951 105 0	SENSOR	DREHZAHL AM SCHWUNGRADGE	1	
13	00 1951 282 0	ZYLINDERKOPFSCHRAUBE		1	
99	ERS05	NO LONGER AVAILABLE		1	
<hr/>					
1)	machine no.				
				+ 0	
				+ K5200113	
				+ K5200201	
				+ K5200202	
				+ K5200203	
				+ K5200204	
				+ K5200205	
				+ K5200206	
				+ K5200207	
				+ K5200208	



160 OIL PAN 1)

Pos.	Part No.	Description	Dimension	Quantity	Conditions
9	00 1951 216 0	OELABLASSSCHRAUBE	OELWANNE	1	
11	00 1951 217 0	GASKET		1	

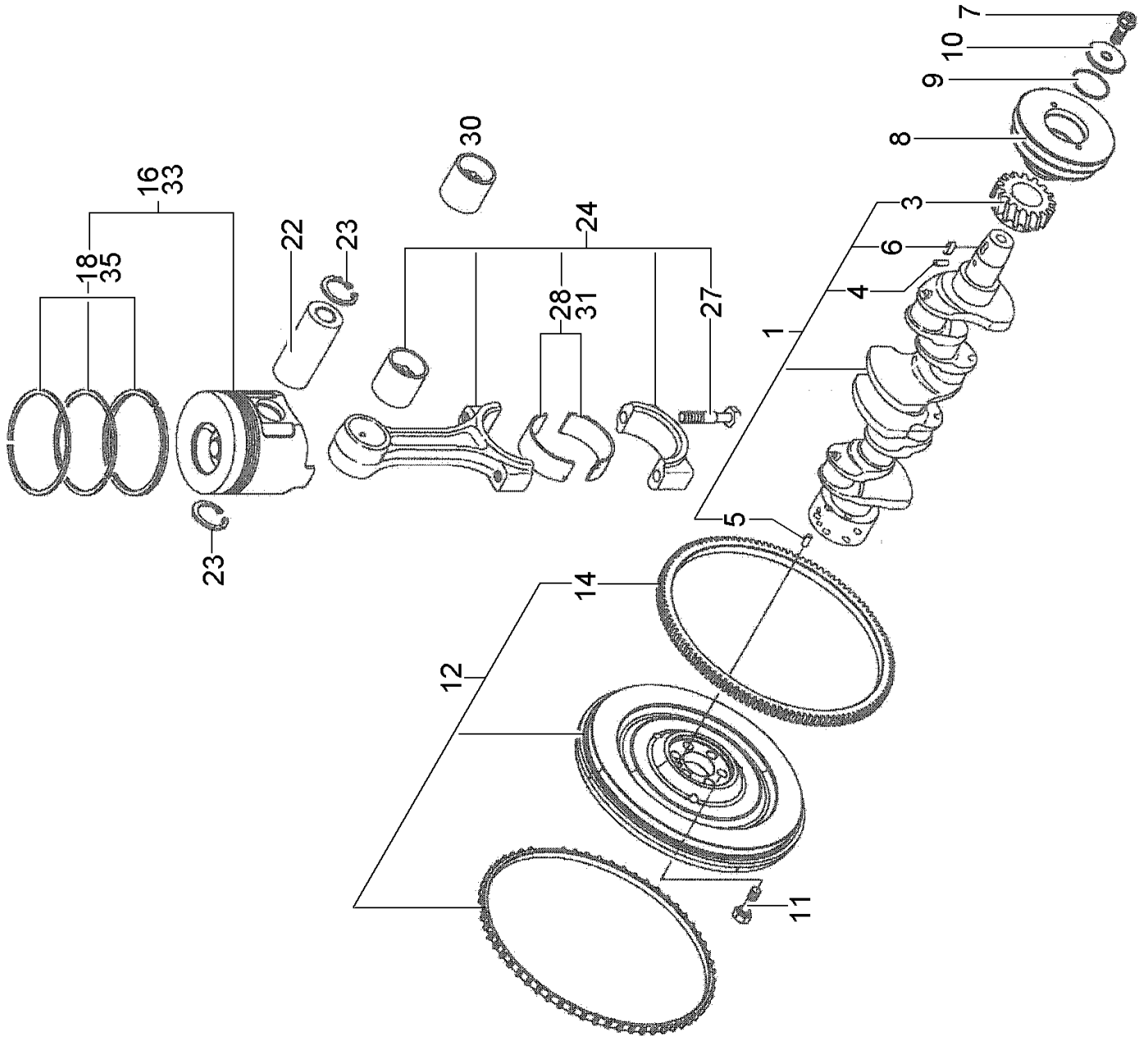
1)	machine no.	+ 0			
		+ K5200113			
		+ K5200201			
		+ K5200202			
		+ K5200203			
		+ K5200204			
		+ K5200205			
		+ K5200206			
		+ K5200207			
		+ K5200208			



120 CONNECTING ROD, CONNECTING ROD BEARINGS 1)

Pos.	Part No.	Description	Dimension	Quantity	Conditions
28	00 1951 246 0	HEXAGON HEAD BOLT		2	
29	00 1951 083 0	BEARING SHELL		1	
31	00 1951 084 0	CONNECT.ROD BUSH.		1	
32	00 1951 085 0	LAGERSCHALE UEBERMASS		1	

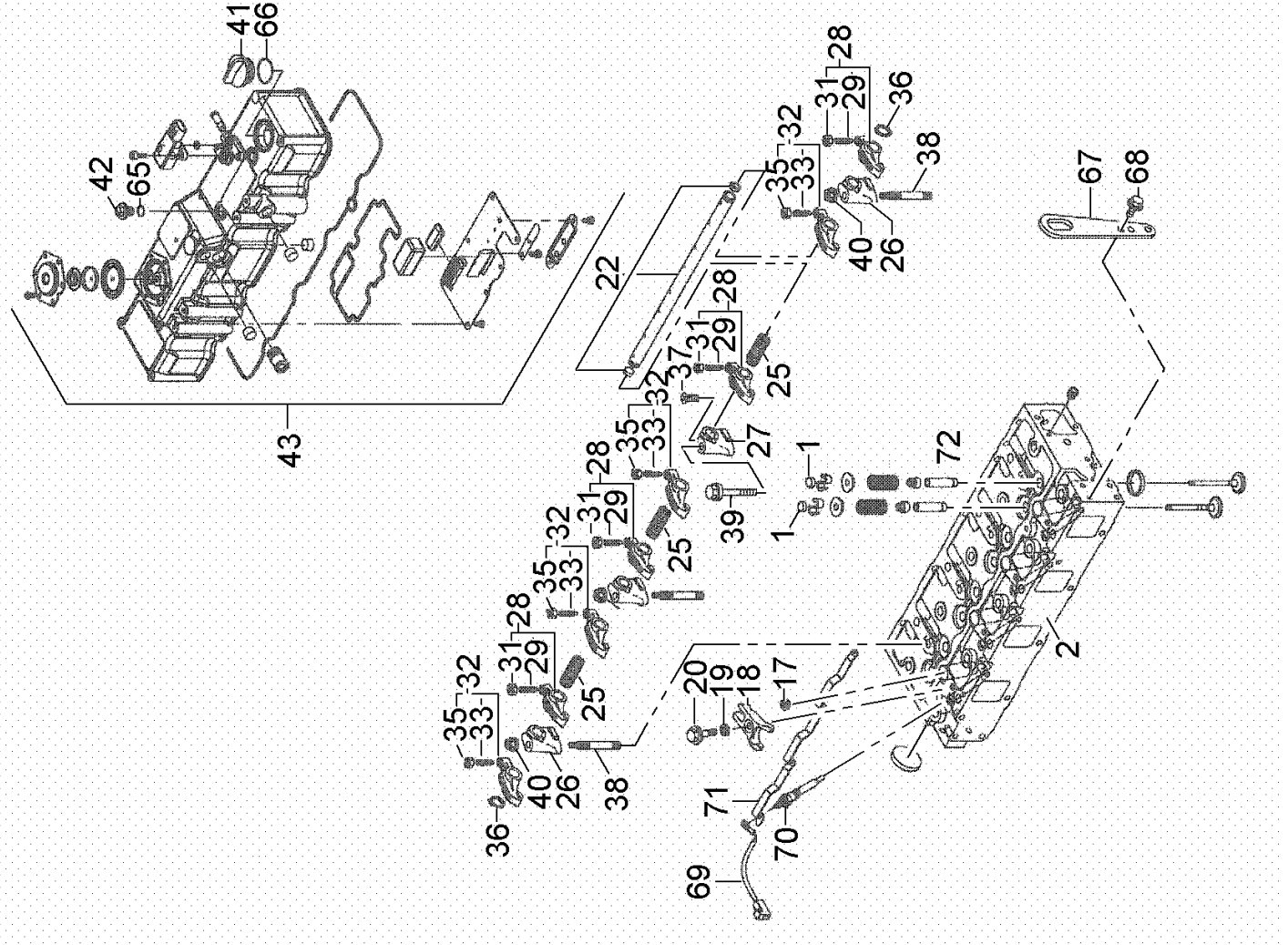
1)	machine no.	+ 0
		+ K5200113
		+ K5200201
		+ K5200202
		+ K5200203
		+ K5200204
		+ K5200205
		+ K5200206
		+ K5200207
		+ K5200208



140 CRANKSHAFT 1)

Pos.	Part No.	Description	Dimension	Quantity	Conditions
1	00 1951 154 0	CRANKSHAFT		1	
3	00 1951 155 0	GEAR		1	
4	00 1951 240 0	PIN		1	
5	00 1951 241 0	PIN		1	
6	00 1951 237 0	SPRING		1	
7	00 1951 242 0	HEXAGON HEAD BOLT		1	
8	00 1954 647 0	V-BELT PULLEY		1	
9	00 1951 356 0	O-RING		1	
10	00 1951 357 0	WASHER		1	
11	00 1951 244 0	HEXAGON HEAD BOLT		6	
12	00 1951 156 0	FLYWHEEL		1	
14	00 1951 081 0	GEAR		1	
16	00 1951 157 0	PLUNGER		4	
18	00 1951 358 0	PISTON RING SET		4	
22	ERS05	NO LONGER AVAILABLE		4	
23	00 1951 245 0	CIRCLIP	MOTOR	8	
24	00 1951 082 0	CONNECTING ROD		4	
27	00 1951 246 0	HEXAGON HEAD BOLT		8	
28	00 1951 083 0	BEARING SHELL		4	
30	00 1951 084 0	CONNECT.ROD BUSH.		4	
31	00 1951 085 0	LAGERSCHALE UEBERMASS		4	
33	00 1951 158 0	KOLBEN UEBERMASS		4	
35	00 1951 359 0	KOLBENRINGSATZ UEBERMASS		4	

1)	machine no.	+ 0
		+ K5200113
		+ K5200201
		+ K5200202
		+ K5200203
		+ K5200204
		+ K5200205
		+ K5200206
		+ K5200207
		+ K5200208



Thank you so much for reading.
Please click the “Buy Now!”
button below to download the
complete manual.



After you pay.

You can download the most
perfect and complete manual in
the world immediately.

Our support email:

ebooklibonline@outlook.com