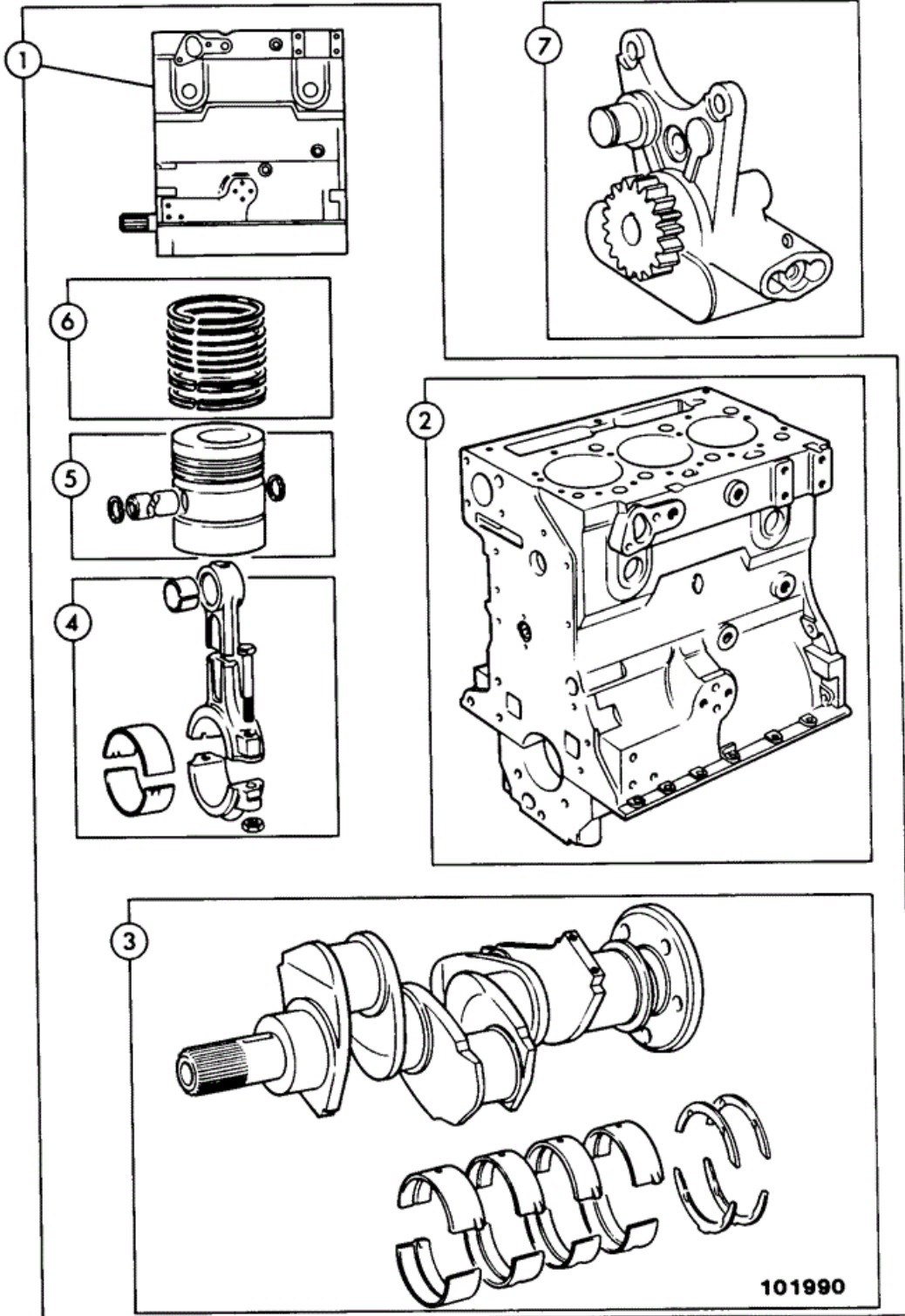




9802/8800 L1-2-1 ENGINE, SHORT CE BUILD



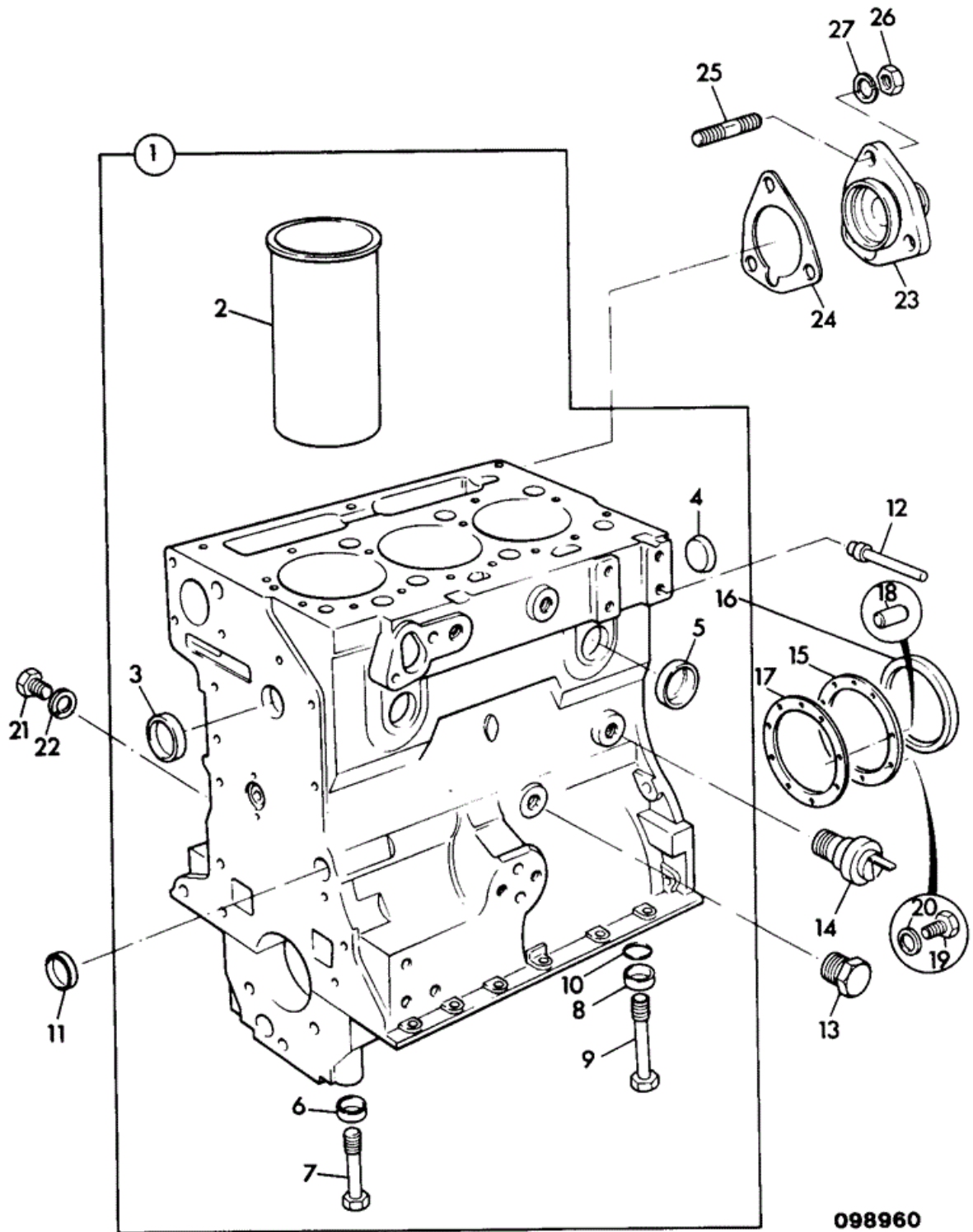
Item	Part #	Change No	Description	Usage Code	QTY
1	02/130170	Superseded	Engine short <i>See Note 1</i>		1
1	02/130210		Engine short		1
2	****		'See Remark' <i>See L1-3-1 Block assembly</i>		1
3	****		'See Remark' <i>See L1-4-1 Crankshaft assembly</i>		1
4	****		'See Remark' <i>See L1-4-1 Con-rod assembly</i>		4
5	****		'See Remark' <i>See L1-4-1 Piston assembly</i>		4
6	****		'See Remark' <i>See L1-4-1 Piston ring kit</i>		4
7	****		'See Remark' <i>See L5-2-1 Oil pump</i> <i>See Note 2</i>		1
8	02/101810		Plug		1
9	02/130169		Plug		2
10	816/00357		Adapter <i>See Note 1 For engine oil pressure switch.</i>		1

Note 1: When installing this short motor additional plugs refs. 8, 9 & 10 are required.

Note 2: Not included with item 1.



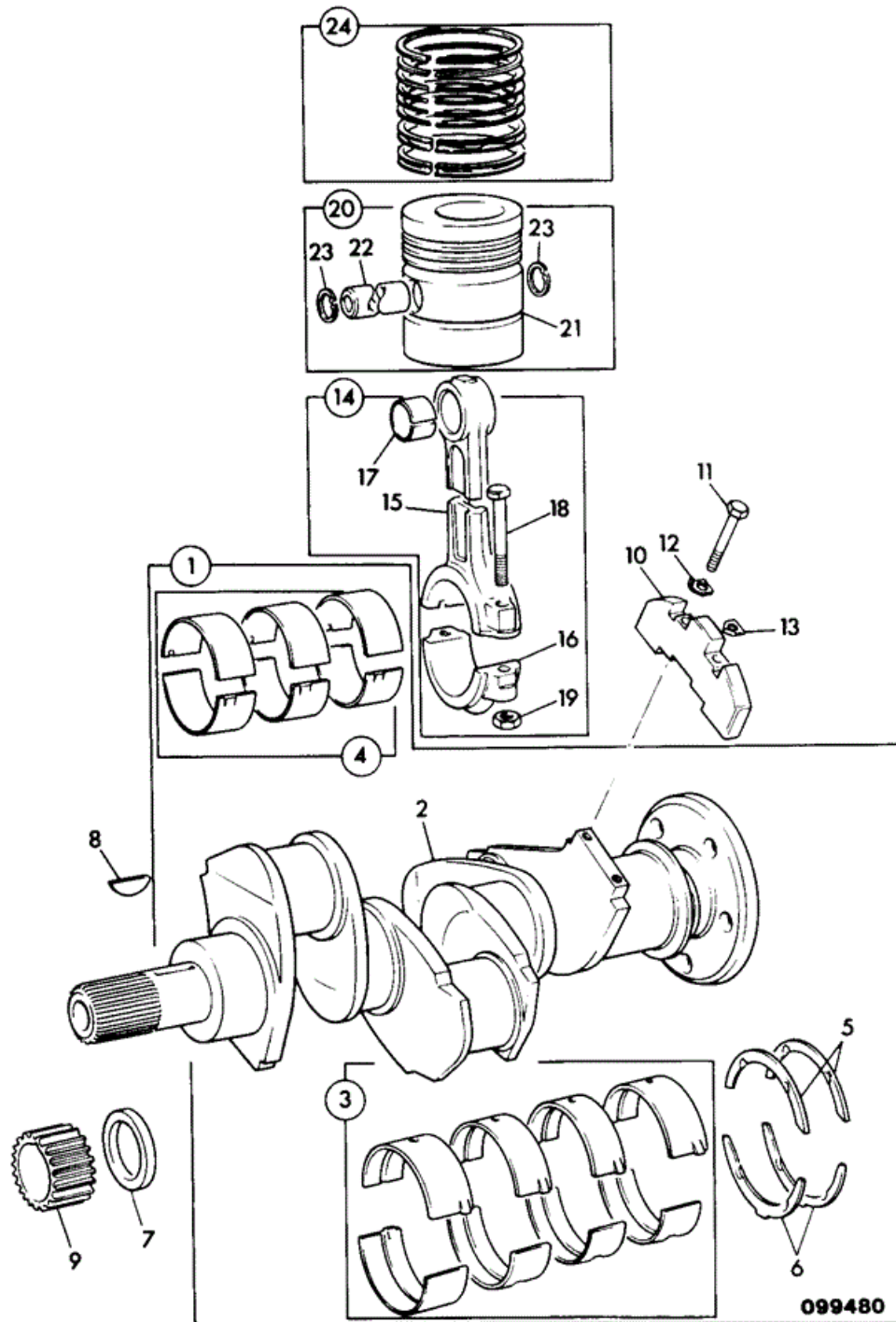
9802/8800 L1-3-1 BLOCK ASSEMBLY CE BUILD



Item	Part #	Change No	Description	Usage Code	QTY
1	02/130180	Superseded	Block assembly		1
1	02/130201		Block cylinder assembly		1
2	:02/130001		Liner cylinder Press-fit		3
2	02/130002		Liner cylinder slip-fit		0
2	02/130171		Liner oversize - 0.25mm		0
3	:02/100396		Plug core D=32mm		1
4	:02/101193		Plug core D=17mm		1
5	:02/100396		Plug core D=32mm		4
6	:02/101893		Thimble		6
7	:02/130003		Bolt		6
8	:02/101893		Thimble		2
9	:02/130004		Bolt		2
10	:02/130005		O Ring		2
11	02/101193		Plug core D=17mm		2
12	02/101827		Plug		1
13	02/100132		Plug drain		1
13	02/100335		Tap drain <i>Alternative</i>		1
14	02/100123		Switch oil pressure		1
15	02/130007		Housing Rear assembly		1
16	:02/101436		Seal rear oil		1
17	02/130008		Gasket		1
18	02/130009		Dowel		2
19	1305/0105Z		Bolt		9
20	1410/0002Z		Washer (5/16" Small)		9
21	1305/0102Z		Bolt		2
22	823/00263		Washer		2
23	02/130010		Plate		1
24	02/130011		Gasket		1
25	822/00126		Stud		3
26	1340/0101Z		Nut		3
27	823/00268		Washer spring		3



9802/8800 L1-4-1 CRANKSHAFT, BEARINGS PISTONS & CON-RODS CE BUILD



Item	Part #	Change No	Description	Usage Code	QTY
1	02/130012	Superseded	Crankshaft Assembly		1
1	02/130200		Crankshaft assembly		1
2	****		None serviced part <i>Crankshaft</i>		1
3	:02/139001		Kit-bearing main standard		1
3	02/139002		Kit-bearing main undersize - 0.010"		0

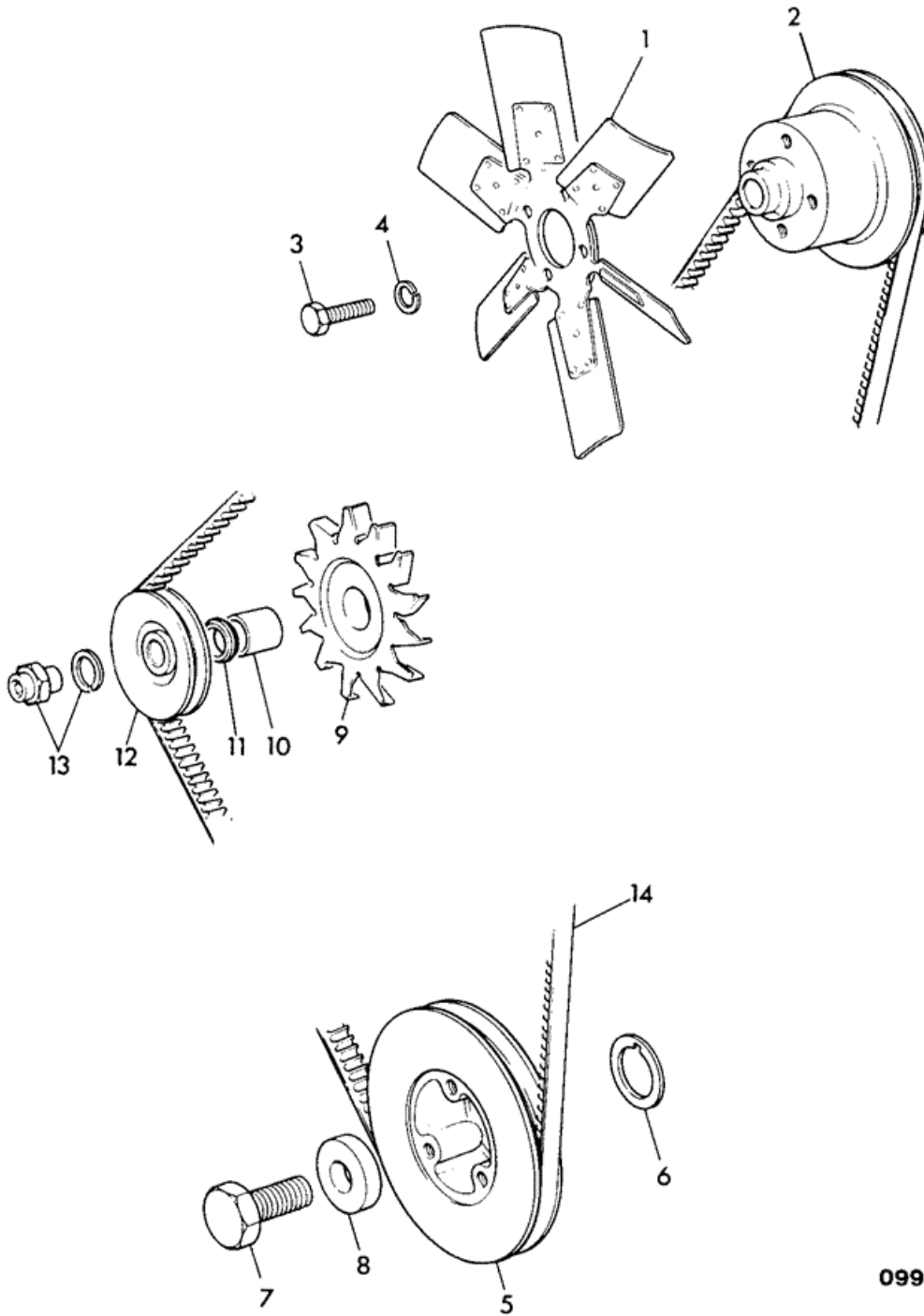
3	02/139003		Kit-bearing main undersize - 0.020"	0
3	02/139004		Kit-bearing main undersize - 0.030"	0
4	:02/139009		Kit-bearing big-end standard	1
4	02/139010		Kit-bearing big-end undersize - 0.010"	0
4	02/139011		Kit-bearing big-end undersize - 0.020"	0
4	02/139012		Kit-bearing big-end undersize - 0.030"	0
5	:02/139005		Washer thrust standard	2
5	02/139006		Washer thrust oversize - 0.007"	0
6	:02/139007		Washer thrust - bottom standard	2
6	02/139008		Washer thrust - bottom oversize - 0.007"	0
7	02/130020		Spacer	1
8	02/130021		Key	1
9	02/139014		Gear crankshaft	1
10	02/130022		Counterweight <i>See Note 1</i>	2
11	02/130023		Screw	4
12	02/130024		Washer tab	2
13	02/130025		Washer tab	2
14	02/130013		Rod connecting	3
15	****		None serviced part <i>Con-rod</i>	1
16	****		None serviced part <i>Cap</i>	1
17	:02/139013		Bush small-end	1
18	:02/130015		Bolt	2
19	:02/130016		Nut	2
20	02/130017	<EU926067Y	Piston assembly 5 ring	3
20	02/130248	Superseded	Piston assembly 4 ring <i>USED ON LATEST SHORT ENGINE</i>	4
20	02/130279		Piston assembly LOW GRADE <i>LOW GRADE</i> <i>See Note 2</i>	0
20A	02/130291		Piston assembly HIGH GRADE <i>See Note 1, HIGH GRADE</i>	0
21	****		None serviced part <i>Piston</i>	1
22	****		None serviced part <i>Gudgeon pin</i>	1
23	:02/130018		Circlip	2
24	02/130019		Kit-piston ring 5 ring	3
24	02/130204		Kit-piston ring 4 ring	4

Note 1: Must be fitted in matched pairs as supplied.

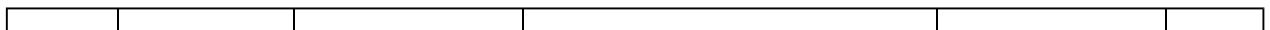
Note 2: Refer to the Service Workshop Manual to ensure the correct Pistons are chosen



9802/8800 L1-5-1 FANS, PULLEYS & FAN BELT CE BUILD



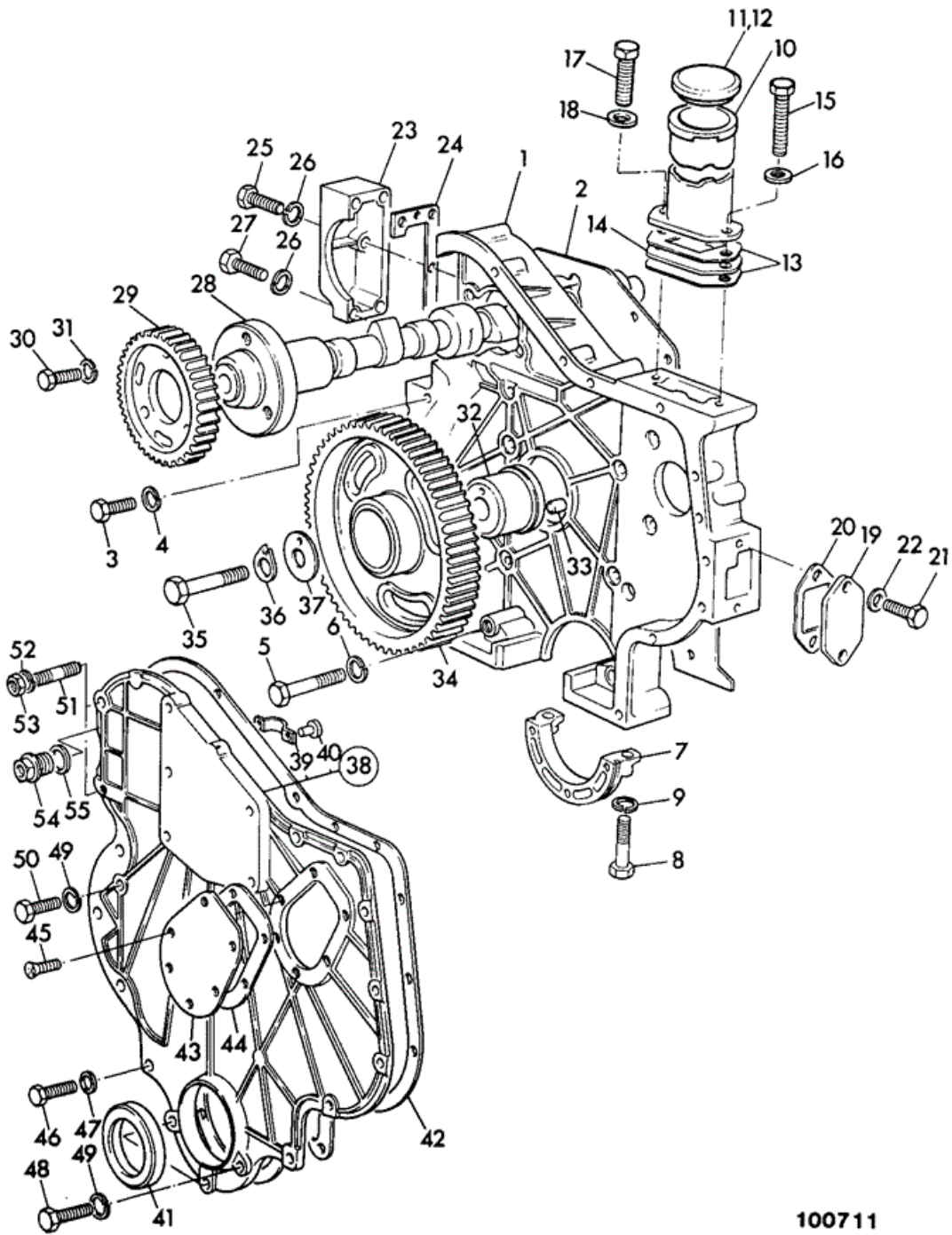
099501



Item	Part #	Change No	Description	Usage Code	QTY
1	02/130026		Fan		1
2	02/130027		Pulley Water pump		1
3	1305/0104Z		Setscrew (5/16" UNF x 3/4")		4
4	823/00268		Washer spring		4
5	02/130028		Pulley Crankshaft		1
6	02/101942		Washer		1
7	02/101586		Bolt		1
8	02/100139		Washer		1
9	714/10812		Fan alternator		1
10	714/11304		Collar Spacer		1
11	02/102013		Spacer		1
12	02/102012		Pulley single D=83mm		1
13	714/10810		Kit-sundry parts		1
14	02/101581		Belt fan, pair		1



9802/8800 L1-6-1 TIMING CASE CAMSHAFT & GEARS CE BUILD



100711

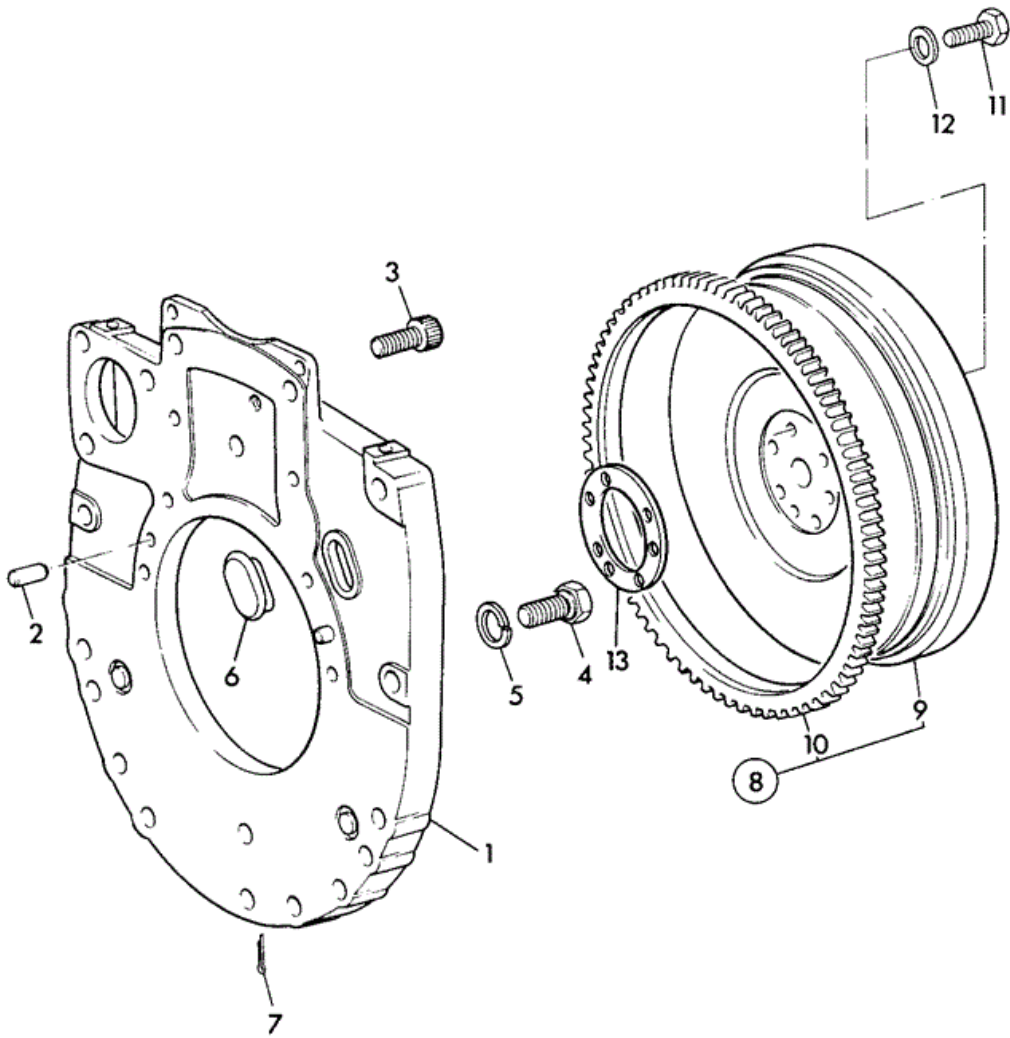
Item	Part #	Change No	Description	Usage Code	QTY
1	02/130034		Casing timing		1
2	02/130035		Gasket timing case to block		1
3	02/130036		Screw		12
4	823/00268		Washer spring		12
5	1305/3112Z		Bolt		2

6	823/00268		Washer spring	2
7	02/130037		Cover	1
8	1305/0109Z		Screw set	2
9	823/00268		Washer spring	2
10	NLA		No Longer Available <i>02/130184 TUBE OIL FILLER</i>	1
11	02/100037		Cap oil filler	1
12	:02/100422		Seal	1
13	02/130040		Gasket	2
14	02/130039		Strainer	1
15	1305/1506Z		Screw	1
16	823/00267		Washer	1
17	1305/1506Z		Screw	1
18	823/00267		Washer	1
19	02/130042		Plate Cover	1
20	02/130040		Gasket	1
21	1305/1503Z		Bolt	2
22	823/00267		Washer	2
23	02/130043		Cover	1
24	02/130044		Gasket	1
25	1305/1614Z		Bolt	1
26	823/00268		Washer spring	4
27	1305/1608Z		Setscrew (5/16 UNC x 1-1/4")	3
28	02/100207		Camshaft	1
29	02/190007		Gear camshaft	1
30	02/130014		Screw	3
31	823/00268		Washer spring	3
32	02/130045		Hub	1
33	02/130046		Dowel	1
34	02/139015		Gear Idler	1
35	02/130047		Screw	1
36	02/130048		Washer	1
37	02/130049		Plate	1
38	02/130176		Cover timing	1
39	02/130053		Clip Spring	1
40	02/130054		Rivet	1
41	02/130051		Seal Front oil	1
42	02/130052		Gasket timing cover	1
43	02/130055		Cover Inspection	1
44	02/130056		Gasket	1
45	02/130057		Screw	6
46	1305/1505Z		Bolt	8
47	823/00267		Washer	8
48	02/130168		Bolt	3
49	823/00268		Washer spring	5
50	1305/1605Z		Bolt	2
51	02/130059		Stud	2
52	823/00267		Washer	2
53	1340/0001Z		Nut	2
54	02/101691	Superseded	Plug oil drain	1
54	02/101782		Plug oil drain <i>Used with item 55A</i>	1

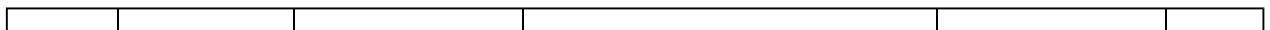
55	823/00265		Washer <i>Used only with 02/101691</i>	1
55A	02/200198		O Ring	1



9802/8800 L1-7-1 FLYWHEEL & HOUSING CE BUILD

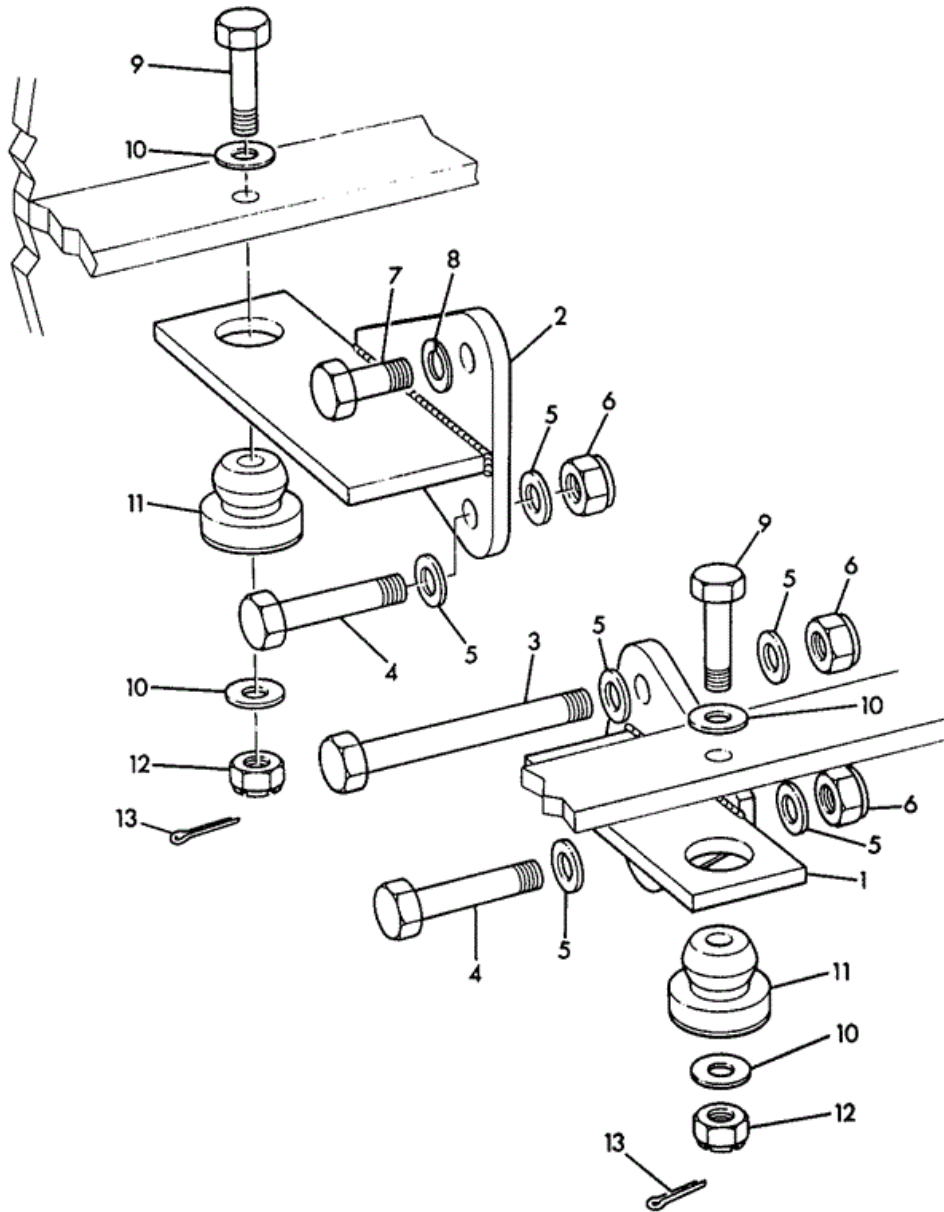


100811

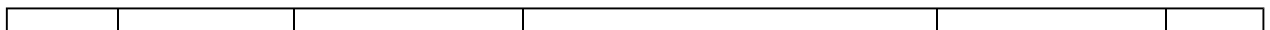


Item	Part #	Change No	Description	Usage Code	QTY
1	02/130029		Housing flywheel		1
2	02/130030		Dowel		2
3	1381/3206		Bolt		2
4	1305/0206Z		Setscrew (3/8" UNF x1")		6
5	823/00269		Washer spring		6
6	02/130031		Plug		1
7	02/130032		Pin Split		1
8	02/130033		Flywheel assembly		1
9	****		None serviced part <i>Flywheel</i>		1
10	:02/100078		Gear starter ring		1
11	1305/3410		Bolt		6
12	02/100614		Washer		6
13	02/130177		Shim		2

JCB 9802/8800 L1-8-1 ENGINE MOUNTINGS

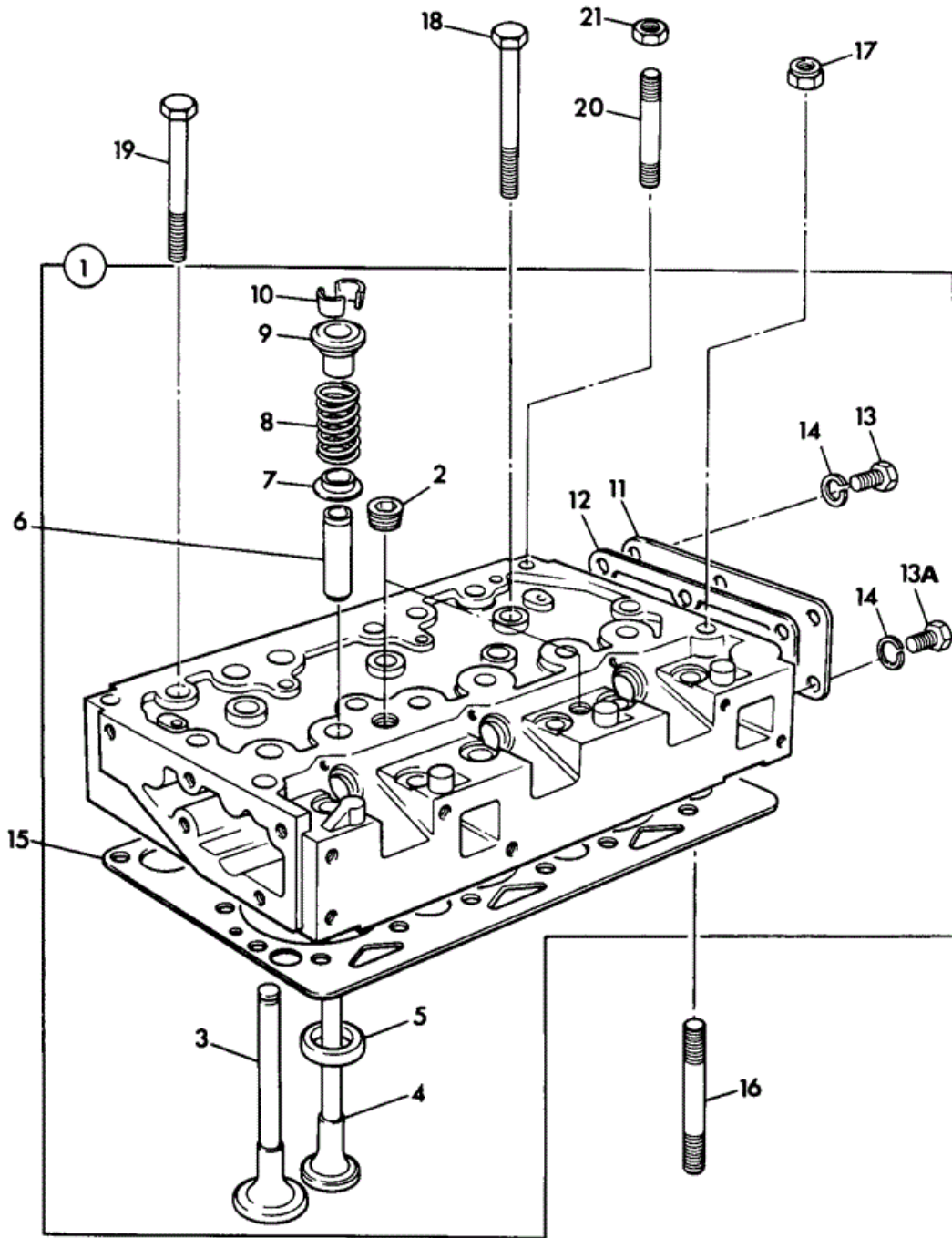


137971



Item	Part #	Change No	Description	Usage Code	QTY
1	140/16800		Bracket mounting-left hand		1
2	140/16900		Bracket mounting-right hand		1
3	1315/3714Z		Bolt M16 x 60		1
4	1315/3716Z		Bolt M16 x 70mm		2
5	1420/0011Z		Washer (M16)		6
6	1370/0603Z		Nut lock M16		3
7	1315/3710Z		Bolt		1
8	1425/0011Z		Washer spring M16		1
9	826/01193		Bolt		2
10	1420/0009Z		Washer (M12)		4
11	111/30101		Mounting metalastik		2
12	1370/0405Z		Nut castellated		2
13	2103/0707		Pin split		2

JCB 9802/8800 L2-1-1 CYLINDER HEAD CE BUILD



099490

Thank you so much for reading.
Please click the “Buy Now!”
button below to download the
complete manual.



After you pay.

You can download the most
perfect and complete manual in
the world immediately.

Our support email:

ebooklibonline@outlook.com