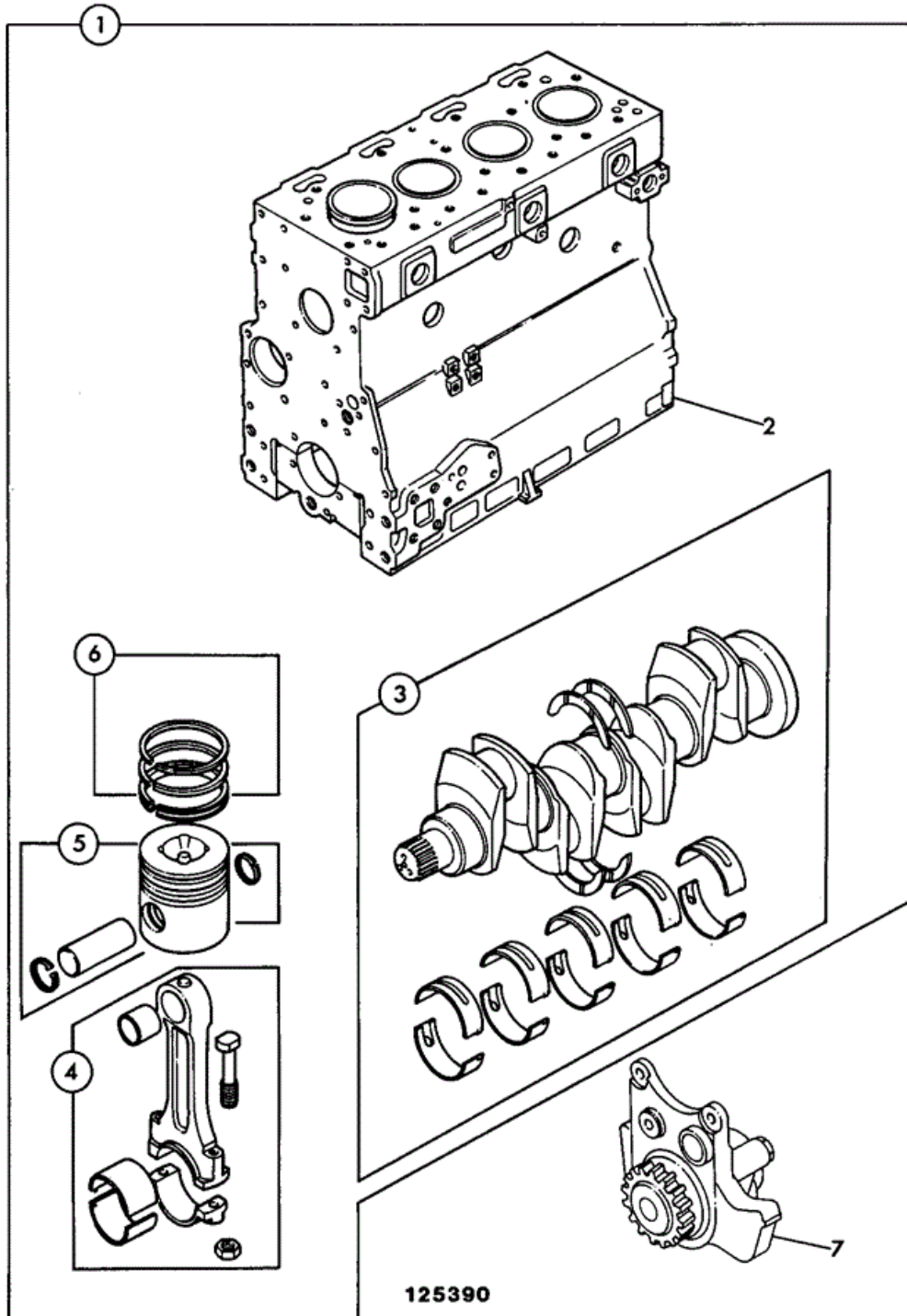




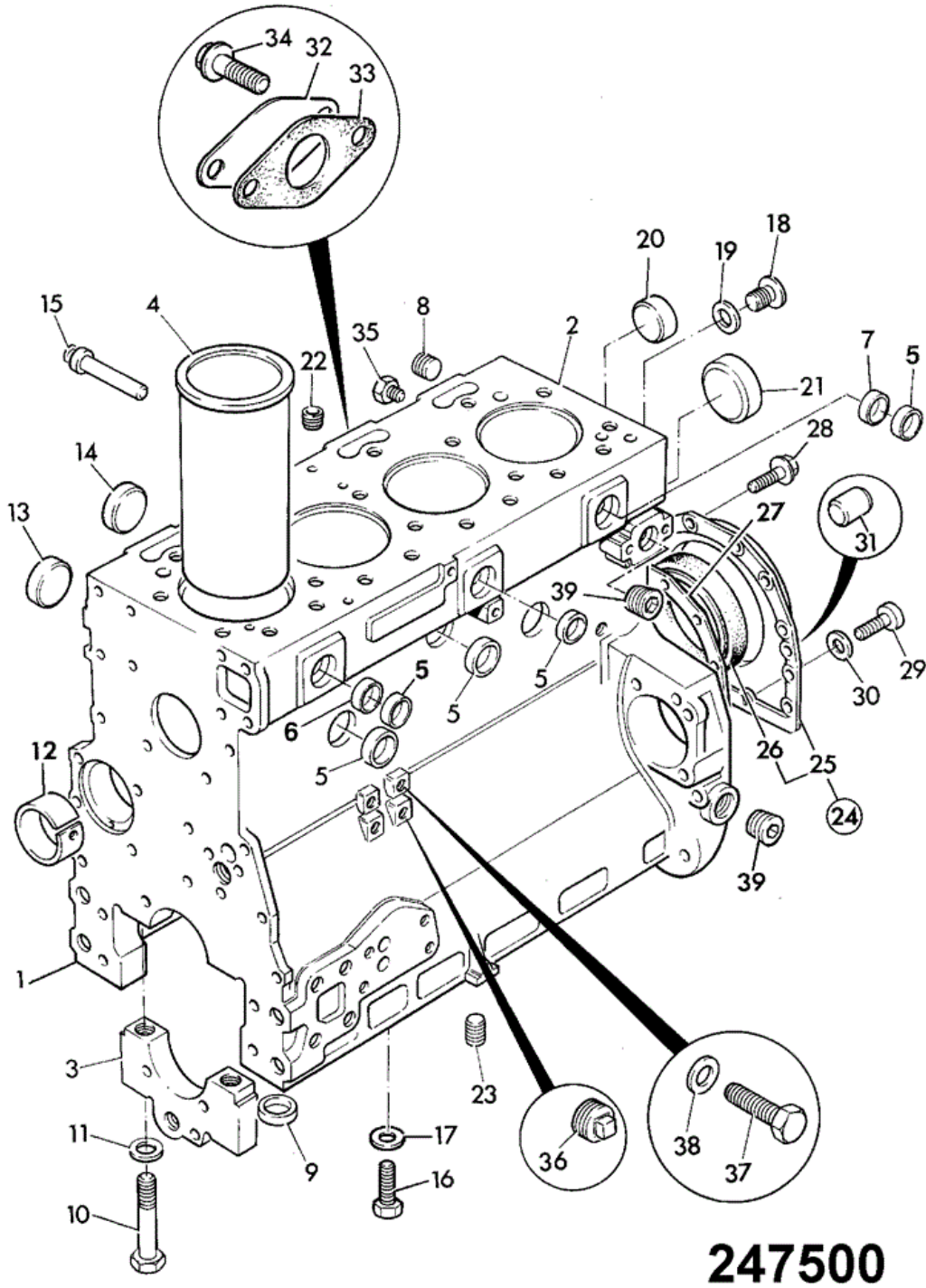
9802/8820 N1-2-1 ENGINE, SHORT AA BUILD



Item	Part #	Change No	Description	Usage Code	QTY
1	02/200440		Engine short, nat/asp		1
2	****		'See Remark' <i>See frame N1-3-1 - Block assembly</i>		1
3	****		'See Remark' <i>See frame N1-4-1 - Crankshaft assembly</i>		1
4	****		'See Remark' <i>See frame N1-4-1 - Con-rod assembly</i>		4
5	****		'See Remark' <i>See frame N1-4-1 - Piston assembly</i>		4
6	****		'See Remark' <i>See frame N1-4-1 - Piston ring kit</i>		4
7	****		'See Remark' <i>See frame N5-2-1 - Oil pump</i>		1



9802/8820 N1-3-1 BLOCK ASSEMBLY AA BUILD



247500

Item	Part #	Change No	Description	Usage Code	QTY
1	02/200190	<EU707726A	Block cylinder assembly		1
1	02/201315	Superseded	Block cylinder assembly		1
1	02/201360	Superseded	Block cylinder, assembly		1

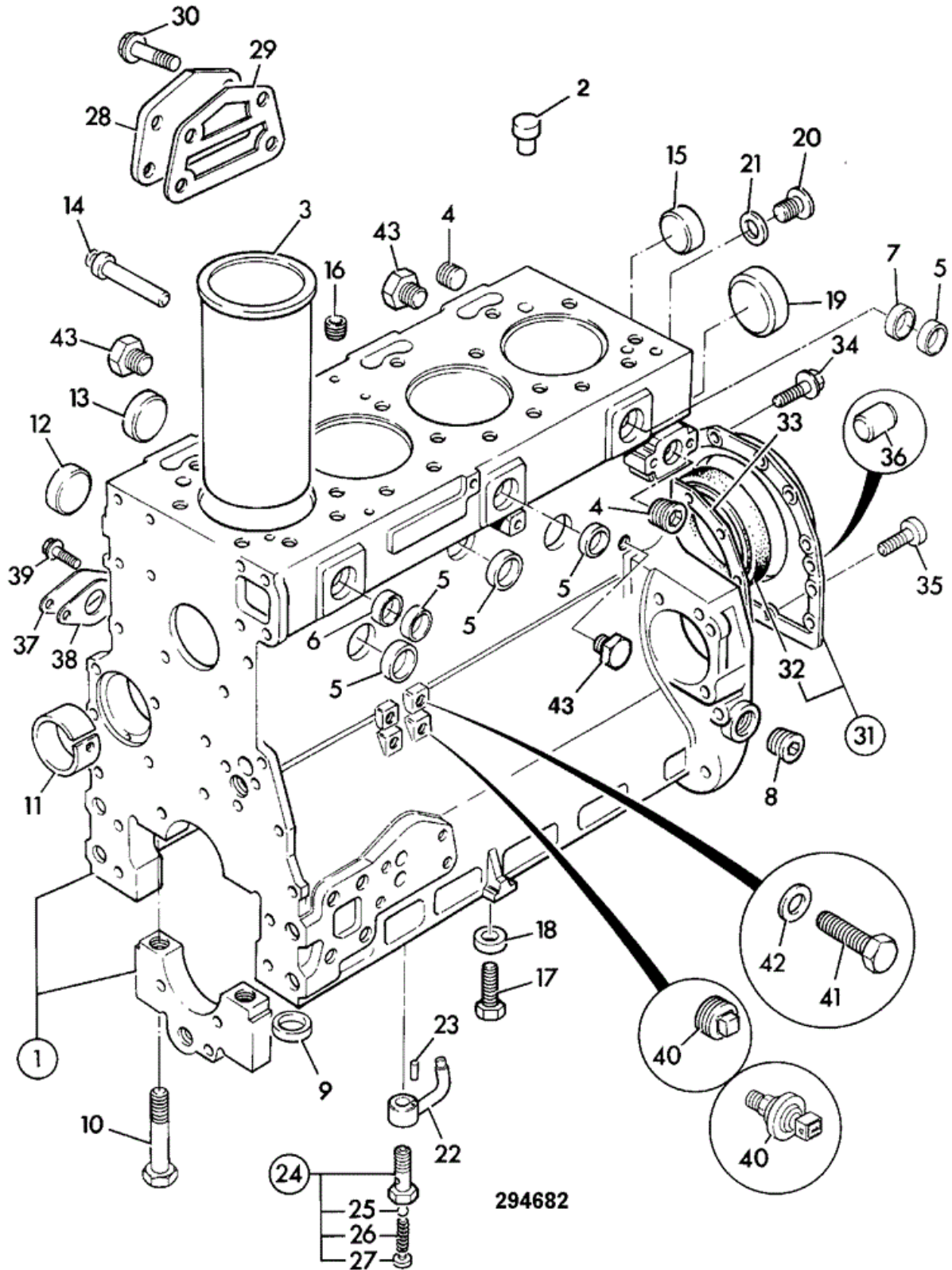
1	02/201772		Block cylinder <i>See frame N1-3-2</i>	1
2	****		None serviced part <i>Block</i>	1
3	****		None serviced part <i>Bearing Cap</i>	5
4	:02/200949		Liner cylinder, press fit <i>See Note 1</i>	4
4	02/200002		Liner cylinder, slip fit	0
4	02/202035		Liner cylinder, slip-fit oversize - 0.10"	0
5	:02/200003		Plug core" D=26mm	2
6	:02/100396		Plug core D=32mm	5
7	:02/100396		Plug core D=32mm	1
8	:02/100134		Plug	1
9	:02/100101		Thimble	10
10	:02/100102		Bolt	10
11	:02/100615		Washer	10
12	:02/192001		Bush camshaft	1
13	:02/200454		Plug core D=38mm	4
14	:02/200454		Plug core D=38mm	2
15	:02/101827		Plug	1
16	:02/101756		Plug	4
17	:823/00287		Washer spacer	4
18	:02/100111		Plug	1
19	:823/00276		Washer	1
20	02/200454		Plug core D=38mm	4
21	02/100107		Plug core D=50mm	1
22	02/100108		Plug	1
23	02/100582		Plug core D=16mm	1
24	02/200523	Superseded	Housing rear seal	1
24	M.S.S	<EU619893X	Multi Supersession <i>See Note 2</i>	1
24A	02/200958	>EU619894X	Housing rear seal	1
25	****		None serviced part <i>Housing</i>	1
26	:02/101436		Seal rear oil	1
27	02/100113	<EU619893X	Gasket rear seal housing	1
27A	02/201092	>EU619894X	Gasket rear seal housing <i>4 hole fixing</i>	1
28	826/00869		Screw flange head	10
28A	826/00869	>EU619894X	Screw flange head <i>Required only with 4 hole fixings</i>	2
29	1391/3307Z		Capscrew M8x25mm	2
30	02/100307		Washer	2
31	02/100308		Dowel	2
32	02/200004		Plate	1
33	02/200005		Gasket	1
34	02/291031		Bolt	2
35	02/100132		Plug drain <i>Water drain</i>	2
35	02/100335		Tap drain <i>Alternative</i>	0
36	826/00765		Plug	1
37	1315/0402Z		Setscrew	1

38	823/00273		Washer		1
39	02/100134		Plug		1

Note 1: Special tools for fitting, boring and honing required, Refer to Service Workshop Manual.
Note 2: Part No Longer Available, use 24A with items 27A,28A and 1 off bridge piece 02/201094.



9802/8820 N1-3-2 BLOCK ASSEMBLY AA BUILD

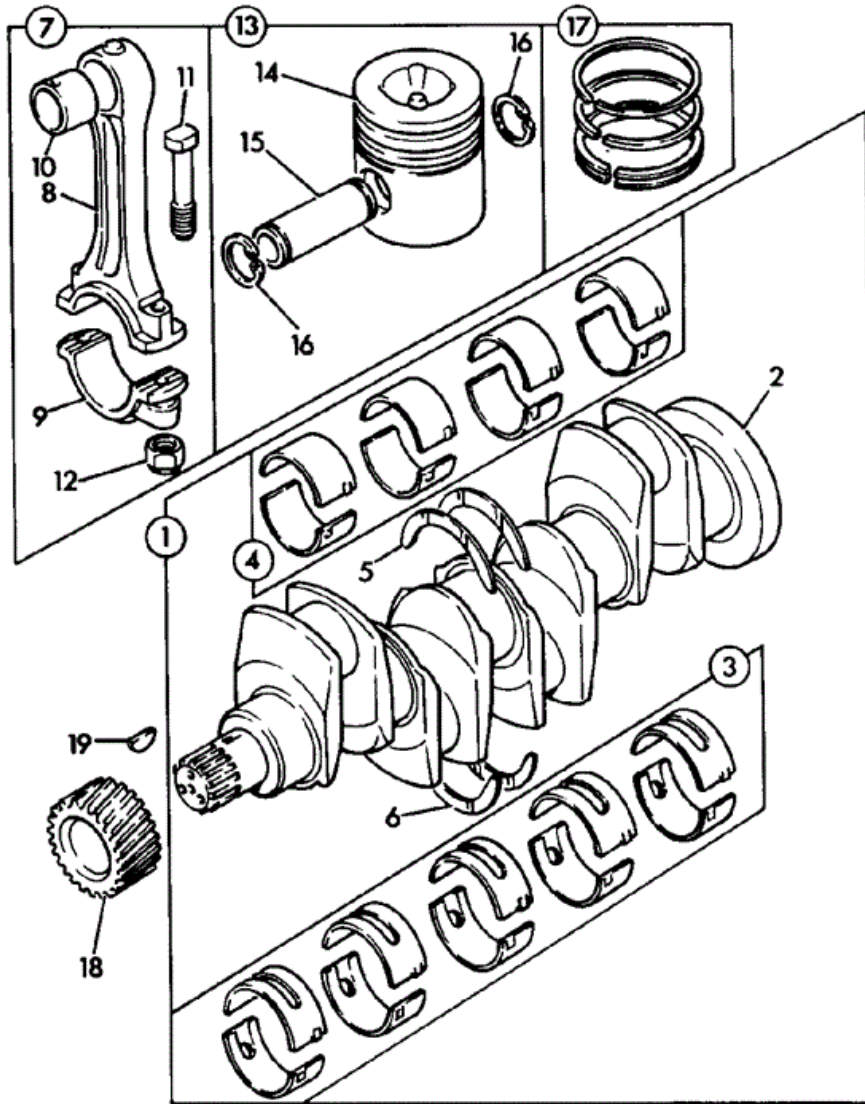


Item	Part #	Change No	Description	Usage Code	QTY
1	02/201772		Block cylinder		1
2	:02/201706		Dowel		2
3	:02/200949		Liner cylinder, press fit <i>See Note 1</i>		4
3	02/200002		Liner cylinder, slip fit		0
3	02/202035		Liner cylinder, slip-fit oversize - 0.10"		0
4	:02/100134		Plug		2
5	:02/100396		Plug core D=32mm		6
6	:02/201304		Plug		1
7	:02/200003		Plug core" D=26mm		1
8	:02/100134		Plug		1
9	:02/100101		Thimble		10
10	:02/100102		Bolt		10
11	:02/192094		Bush camshaft		1
12	:02/200454		Plug core D=38mm		4
13	:02/201361		Plug core D=38mm		3
14	:02/101827		Plug		1
15	:02/200454		Plug core D=38mm		2
16	:02/100108		Plug		1
17	:02/101756		Plug		4
18	:823/00287		Washer spacer		4
19	:02/201362		Plug core D=50mm		1
20	:02/200827		Plug		1
21	:02/200828		Washer		1
22	:02/201734		Jet piston cooling		1
23	:02/201731		Pin roll		1
24	::02/101898		Valve		1
25	::02/200099		Ball		1
26	::02/200098		Spring		1
27	::02/200097		Retainer		1
28	:02/200826		Plate		1
29	:02/200484		Gasket		1
30	:02/291042		Bolt		4
31	:02/200958		Housing rear seal		1
32	:02/101436		Seal rear oil		1
33	02/201092		Gasket rear seal housing		1
34	826/00869		Screw flange head		12
35	02/291185		Capscrew		2
36	02/100308		Dowel		2
37	02/200004		Plate		1
38	02/200475		Gasket		1
39	02/291031		Bolt		2
40	701/41500		Switch oil pressure		1
41	1315/0402Z		Setscrew		1
42	823/00273		Washer		1
43	02/100132		Plug drain		1

Note 1: Special tools required for fitting boring and honing. Refer to Service Workshop Manual.



9802/8820 N1-4-1 CRANKSHAFT, BEARINGS PISTONS & CON-RODS AA BUILD



095660

Item	Part #	Change No	Description	Usage Code	QTY
1	02/101825		Crankshaft assembly	P/Ex	1
2	****		None serviced part <i>Crankshaft</i>		1
3	:02/192002		Kit-bearing Main Standard		1
3	02/192003		Kit-bearing Main Undersize - .010inch		1
3	02/192004		Kit-bearing Main Undersize - .020inch		1

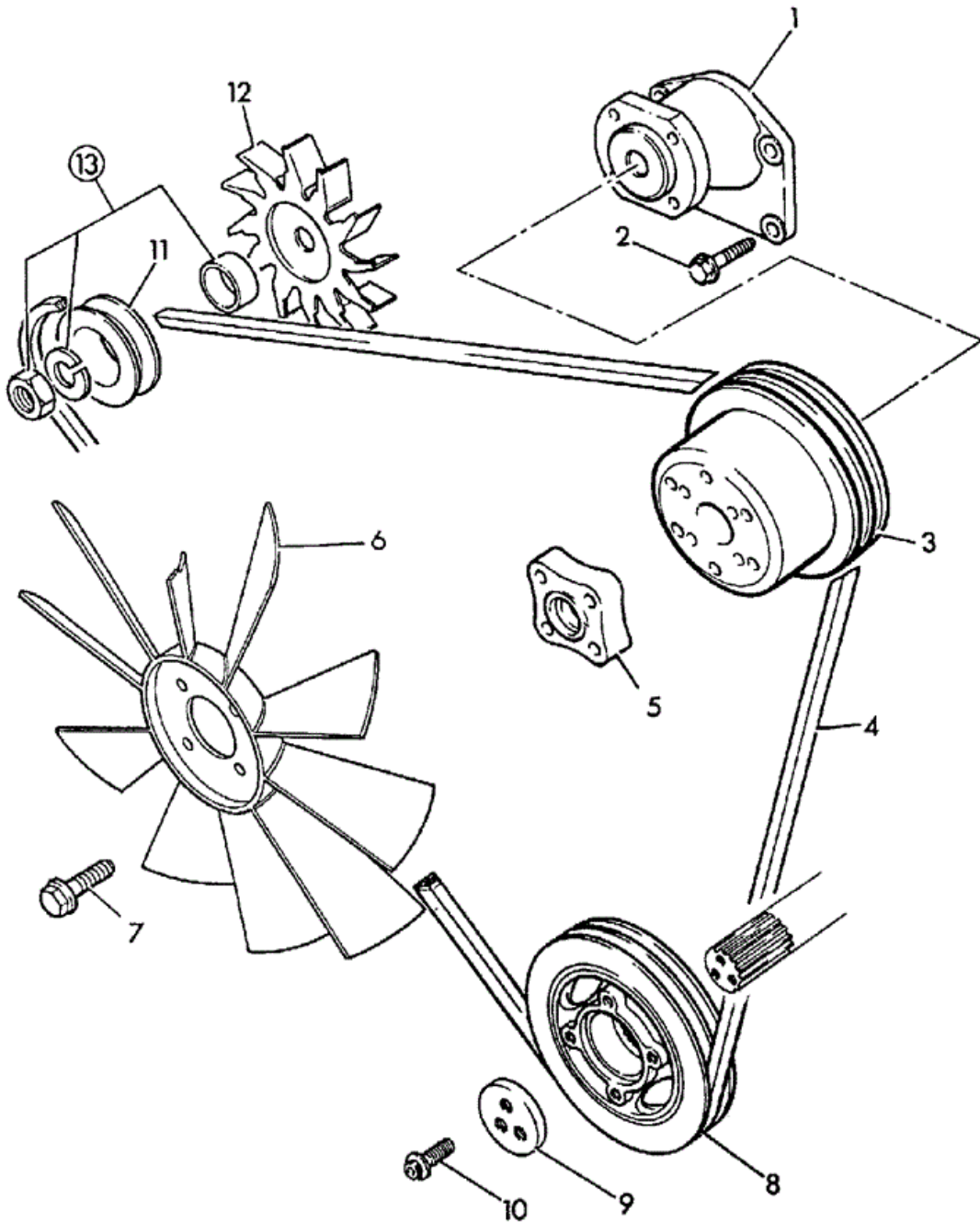
3	02/192005		Kit-bearing Main Undersize - .030inch	1
4	:02/192006		Kit-bearing big end standard	1
4	02/192007		Kit-bearing Big end Undersize - .010inch	1
4	02/192008		Kit-bearing Big end Undersize - .020inch	1
4	02/192009		Kit-bearing Big end Undersize - .030inch	1
5	:02/192083		Washer thrust top - standard	2
5	02/192011		Washer thrust top-oversize 0.19mm	2
6	:02/192084		Washer thrust bottom - standard	2
6	02/192013		Washer thrust btm-oversize 0.19mm	2
7	02/101440		Rod assembly Connecting	4
8	****		None serviced part <i>Con-rod</i>	1
9	****		None serviced part <i>Cap</i>	1
10	:02/192015		Bush small end	1
11	:02/291072		Bolt	2
12	:02/100128		Nut	2
13	02/200471	Superseded	Piston assembly	4
13	M.S.S	<EU618035X	Multi Supersession <i>Part N.L.A use 13A with item 17</i> <i>See Note 1</i>	1
13A	02/200904	<EU797494C	Piston assembly	4
13B	02/201939	Superseded	Piston assembly <i>Part N.L.A use 13B with item 17A</i>	4
13B	M.S.S		Multi Supersession <i>Part N.L.A use 13C with item 17A</i> <i>See Note 2</i>	4
13C	02/202111		Piston assembly	4
14	****		None serviced part <i>Piston</i>	1
15	****		None serviced part <i>Gudgeon pin</i>	1
16	:2203/1040		Circlip	2
17	02/200192	<EU797494C	Kit-piston ring	4
17A	02/201938	>EU797495C	Kit-piston ring	4
18	02/290001		Gear	1
19	02/100038		Key	1

Note 1: WAS 02/200471 USE 02/200904 WITH 02/200192 IN ENGINE SETS ONLY.

Note 2: WAS 02/201939 USE 02/202111 WITH 02/201938 IN ENGINE SETS ONLY.



9802/8820 N1-5-1 FANS, PULLEYS & FAN BELT AA BUILD

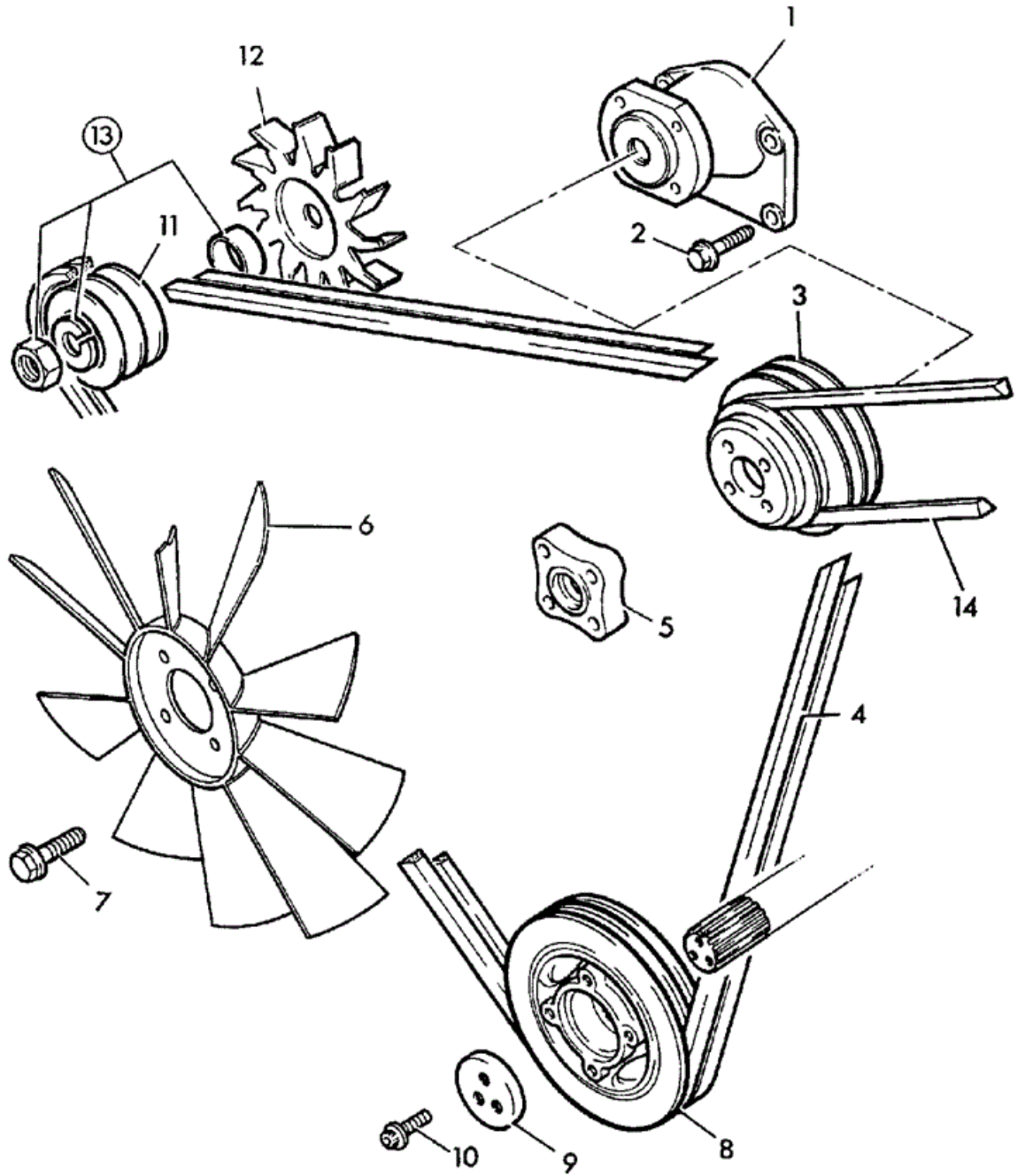


151073

Item	Part #	Change No	Description	Usage Code	QTY
1	02/200370		Housing assembly, fan drive		1
2	02/291041		Bolt		4
3	02/200224		Pulley fan drive		1
4	02/200358		Belt fan, pair		1
5	02/100957		Spacer fan 25.4mm		1
6	141/18300		Fan cooling, 18" 10 blades		1
7	02/291104		Screw		4
8	02/200018		Pulley crankshaft twin groove		1
9	02/200017		Block Thrust		1
10	02/100579		Screw		3
11	02/200212		Pulley alternator D=86mm single groove		1
12	02/200452		Fan alternator		1
13	714/10810		Kit-sundry parts		1



9802/8820 N1-5-3 FANS, PULLEYS & FAN BELT AIR CONDITIONING



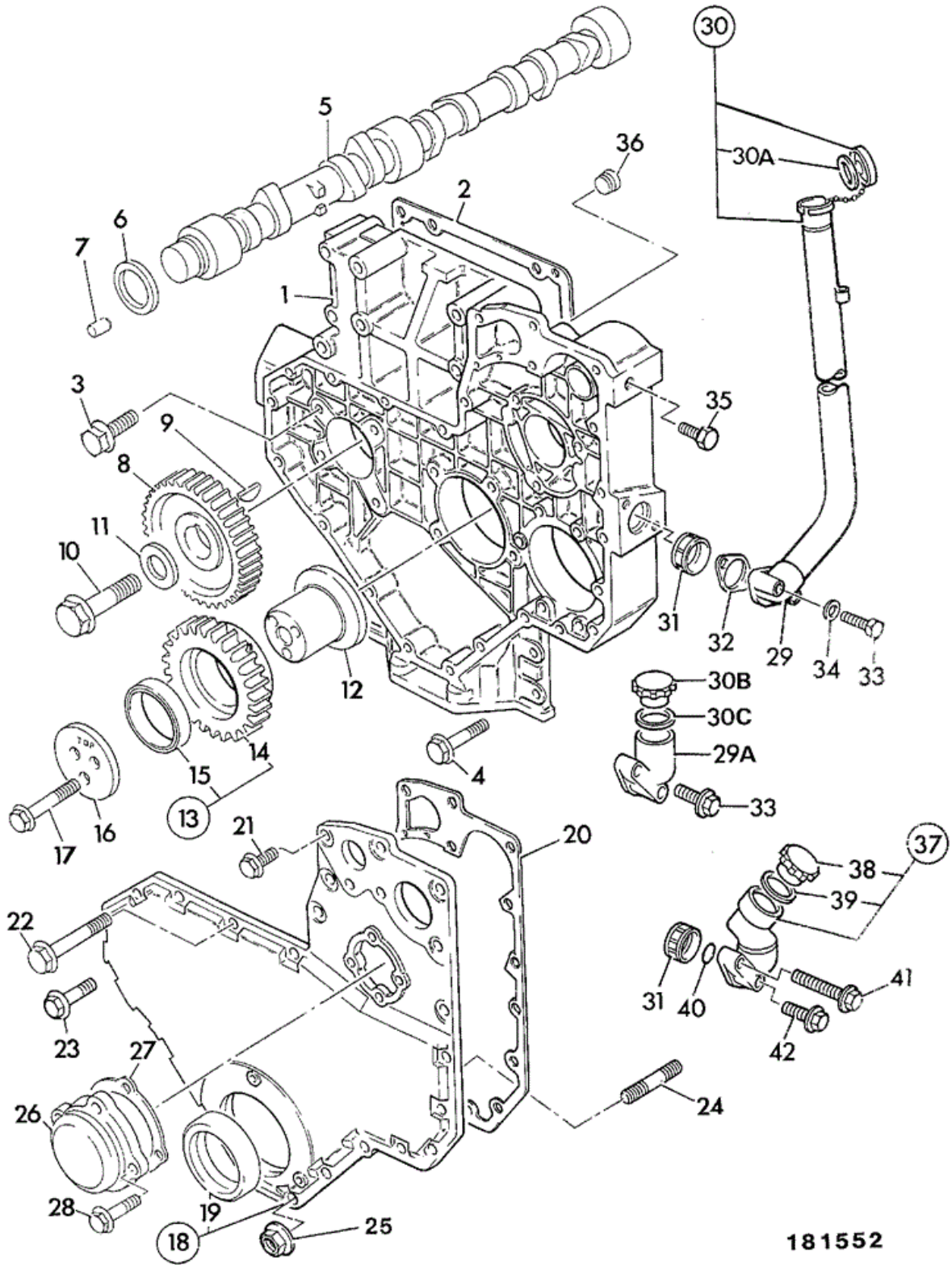
183610

Item	Part #	Change No	Description	Usage Code	QTY
1	02/200370		Housing assembly, fan drive		1
2	02/291041		Bolt		4
3	141/00765		Pulley fan drive triple groove		1
4	02/200739		Belt fan, pair		1
5	02/100957		Spacer fan 25.4mm		1

6	141/18300		Fan cooling, 18" 10 blades	1
7	02/291104		Screw	4
8	02/200018		Pulley crankshaft twin groove <i>Crankshaft</i>	1
9	02/200017		Block Thrust	1
10	02/100579		Screw	3
11	02/200019		Pulley alternator twin groove <i>Alternator</i>	1
12	02/200452		Fan alternator	1
13	714/10810		Kit-sundry parts	1
14	141/01427		Belt drive <i>Compressor, air conditioning</i>	1



9802/8820 N1-6-1 TIMING CASE CAMSHAFT & GEARS AA BUILD



181552

Item	Part #	Change No	Description	Usage Code	QTY
1	02/200830		Case timing		1
2	02/200022		Gasket t/case to block		1
3	826/00869		Screw flange head		8
4	02/291033		Bolt		4
5	02/200023		Camshaft		1

Thank you so much for reading.
Please click the “Buy Now!”
button below to download the
complete manual.



After you pay.

You can download the most
perfect and complete manual in
the world immediately.

Our support email:

ebooklibonline@outlook.com