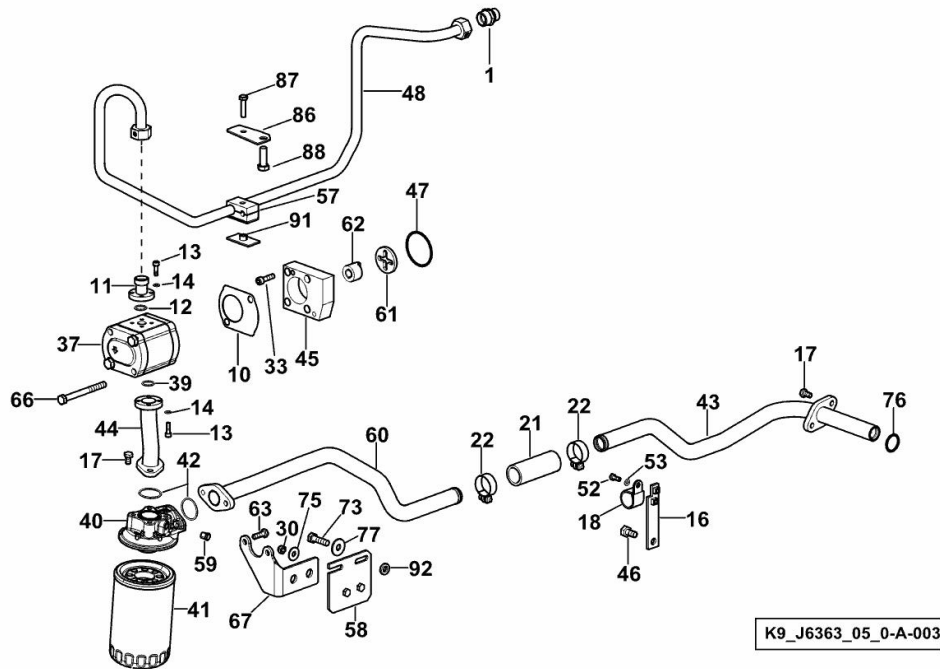
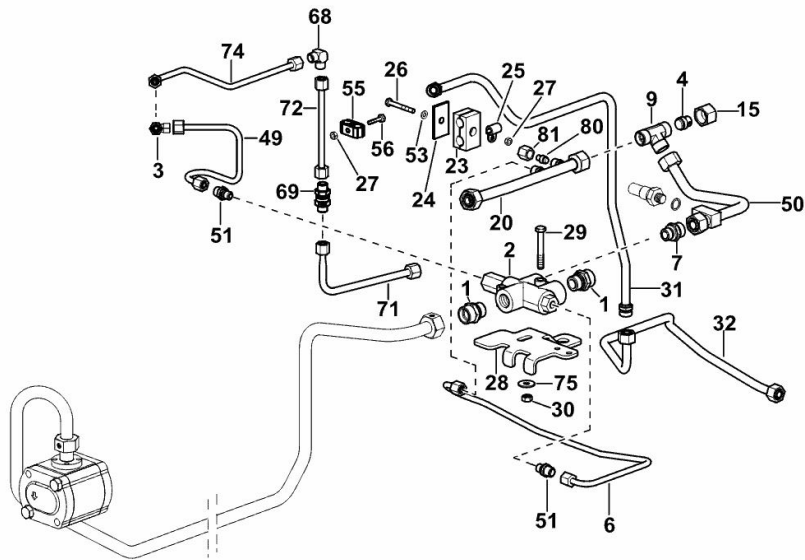


HYDRAULIC SYSTEM OPEN CENTER

Fig.	P/n	QTY	Name
87	2.0112.213.2	1	screw m 8 p.1.25 x 35
88	2.0114.413.2	1	screw m 12 x 35
91	01180338	1	small plate
92	04455348	2	spacer



HYDRAULIC SYSTEM OPEN CENTER



K9_J6363_05_0-B-001

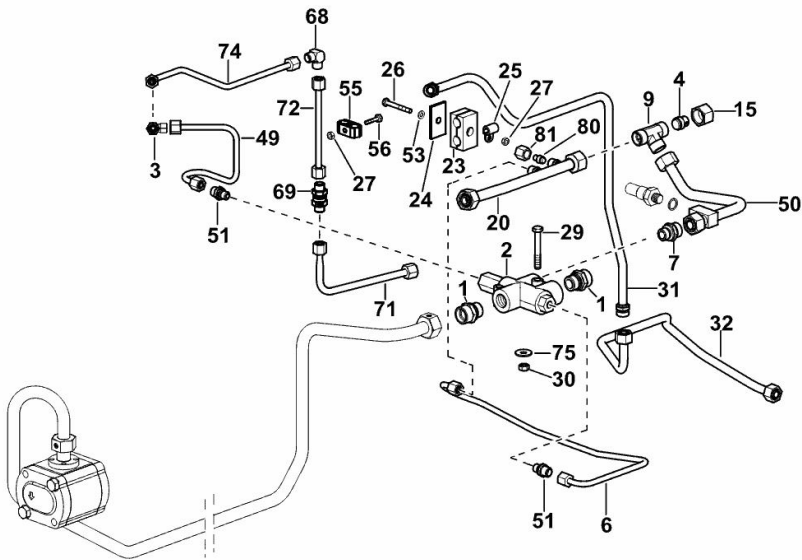
Fig.	P/n	QTY	Name
------	-----	-----	------

Notes:

- FOR TYPES WITH PNEUMATIC BRAKE [Agrotron M 610 -> WSXJ630200LD10010 -> 30000] 10578 <-

1	01177450	2	pipe fitting m 22 p.1.5x18
2	04450326	1	valve ☞ 04450326
3	04416020	1	pipe fitting T
4	01180617	1	cone
6	04450321/40	1	tube
7	01177226	1	pipe fitting m 18 p.1.5 x 15
9	01127372	1	pipe fitting 1 15 d3908
15	01179540	1	nut cl 15 h3105
20	04454793	1	pipng
23	01175671	2	terminal 12-15
24	01175670	1	small plate
25	01172129	1	terminal B8X15
26	2.0112.019.2	1	screw m 6 p.1 x 50
27	2.1011.103.2	2	nut m 6 p.1
28	0.016.2959.0	1	support
29	2.0112.221.2	1	screw m 8 p.1.25 x 60
30	2.1011.105.2	1	nut m 8 p.1.25
31	04454477/10	1	tube
32	04454478/10	1	tube
49	04454601/20	1	tube
50	04450545/20	1	pipng
51	01180557	2	pipe fitting m 12 p.1.5x8
53	2.1310.002.2	2	flat washer 6.4x12.5
55	04454482	1	fascia
56	2.0114.009.2	1	screw m 6 x 25, d933
68	04450567	1	vent
69	04450563	1	valve
71	04450550/20	1	tube
72	04450554/20	1	tube
74	04450568/10	1	vent
75	2.1312.004.2	3	washer 8x24x2
80	01180564	1	plug
81	2.3369.018.2	1	nut

HYDRAULIC SYSTEM OPEN CENTER



K9_J6363_05_0-B-002

Fig.	P/n	QTY	Name
------	-----	-----	------

Notes:

- FOR TYPES WITH PNEUMATIC BRAKE [Agrotron M 610 -> WSXJ630200LD10010 -> 30000] -> 10593

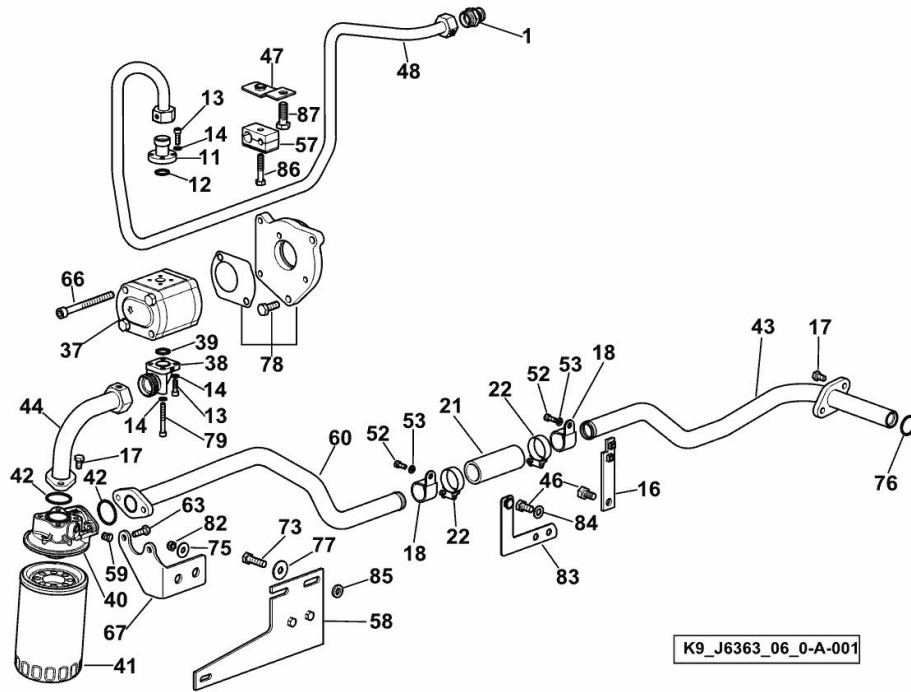
1	01177450	2	pipe fitting m 22 p.1.5x18
2	04450326	1	valve ☞ 04450326
3	04416020	1	pipe fitting T
4	01180617	1	cone
6	04450321/40	1	tube
7	01177226	1	pipe fitting m 18 p.1.5 x 15
9	01127372	1	pipe fitting 1 15 d3908
15	2.3369.022.2	1	nut
20	04454793	1	pipng
23	01175671	2	terminal 12-15
24	01175670	1	small plate
25	01172129	1	terminal B8X15
26	2.0112.019.2	1	screw m 6 p.1 x 50
27	2.1011.103.2	2	nut m 6 p.1
29	2.0112.220.2	1	screw m 8 p.1.25x55
30	2.1011.105.2	3	nut m 8 p.1.25
31	04454477/10	1	tube
32	04454478/10	1	tube
49	04454601/20	1	tube
50	04450545/20	1	pipng
51	01180557	2	pipe fitting m 12 p.1.5x8
53	2.1310.002.2	2	flat washer 6.4x12.5
55	04454482	1	fascia
56	2.0114.009.2	1	screw m 6 x 25, d933
68	04450567	1	vent
69	04450563	1	valve
71	04450550/20	1	tube
72	04450554/20	1	tube
74	04450568/10	1	vent
75	2.1312.004.2	3	washer 8x24x2
80	01180564	1	plug
81	2.3369.018.2	1	nut

HYDRAULIC SYSTEM OPEN CENTER

Fig.	P/n	QTY	Name
------	-----	-----	------

Notes:

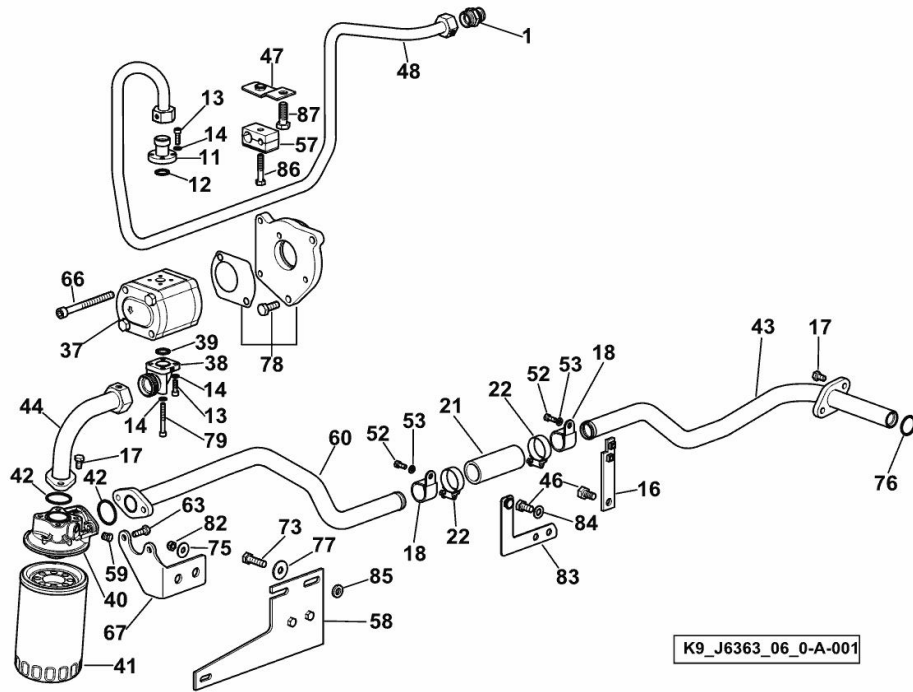
- FOR TYPES WITHOUT PNEUMATIC BRAKE [Agrotron M 610 -> WSXJ630200LD10010 -> 30000] 10484 <-



1	01177450	2	pipe fitting m 22 p.1.5x18
11	04450491	1	flange
12	06214809	1	oil seal 18x2,5
13	2.0312.106.2	6	screw m 6 p.1 x 20
14	2.1474.007.2	8	washer 6, d128
16	04453484.2	1	bracket
17	2.0114.207.2	4	screw m 8 p.1.25 x 20
18	01213283	2	clamp Ø 20/28
21	04455288	1	tube
22	2.6859.152.2	2	clamp
37	04450322	1	hydraulic pump 16 ccm ☞ 04450322
38	16054977	1	flange Ø 28 / m 36 p.2
39	04361481	1	ring 26x2.5
40	2.4419.350.1/40	1	head
41	2.4419.350.0/10	1	hydr.oil filter elem. Ø 107.7
42	2.1530.095.0	2	oil seal 36.14x2.62
43	04450573/10	1	tube
44	04455266.2	1	tube
46	2.0114.307.2	3	screw m 10 x 20, d933
47	04455230	1	support
48	04455973.2	1	pipng
52	2.0114.005.2	2	screw m 6 p.1.0 x 16
53	2.1310.002.2	2	flat washer 6.4x12.5
57	04453993	1	fascia 18-10
58	04455189.2	1	support
59	04450524	1	plug
60	04455971.2	1	tube
63	2.0114.209.2	2	screw m 8 x 25
66	2.0312.327.2	2	screw m 10 p.1.5x110
67	04455126	1	support
73	2.0112.313.2	2	screw m 10 p.1.5 x 35
75	2.1312.004.2	3	washer 8x24x2
76	04450572	1	oil seal 28x2
77	2.1312.005.2	2	washer 10.2
78	00290646	1	flange ☞ 00290646
79	2.0312.116.2	2	screw m 6 p.1 x 50
82	2.1121.005.2	2	nut m 8 p.1.25
83	04455252	1	support
84	2.1310.006.2	2	flat washer 10.5x21

HYDRAULIC SYSTEM OPEN CENTER

Fig.	P/n	QTY	Name
85	04455348	2	spacer
86	2.0114.216.2	1	screw m 8 x 45
87	2.0114.413.2	1	screw m 12 x 35

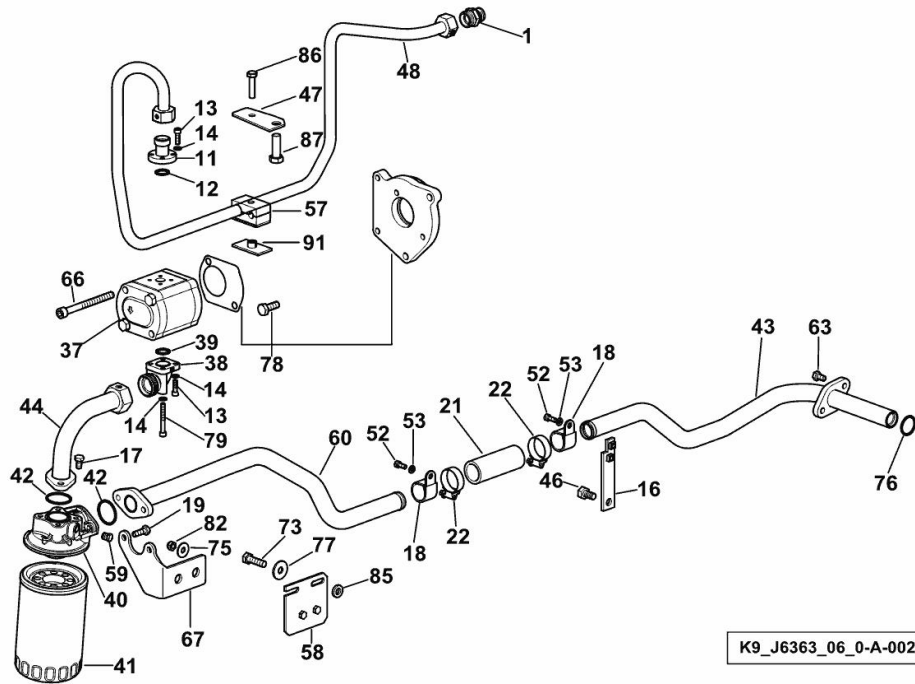


HYDRAULIC SYSTEM OPEN CENTER

Fig.	P/n	QTY	Name
------	-----	-----	------

Notes:

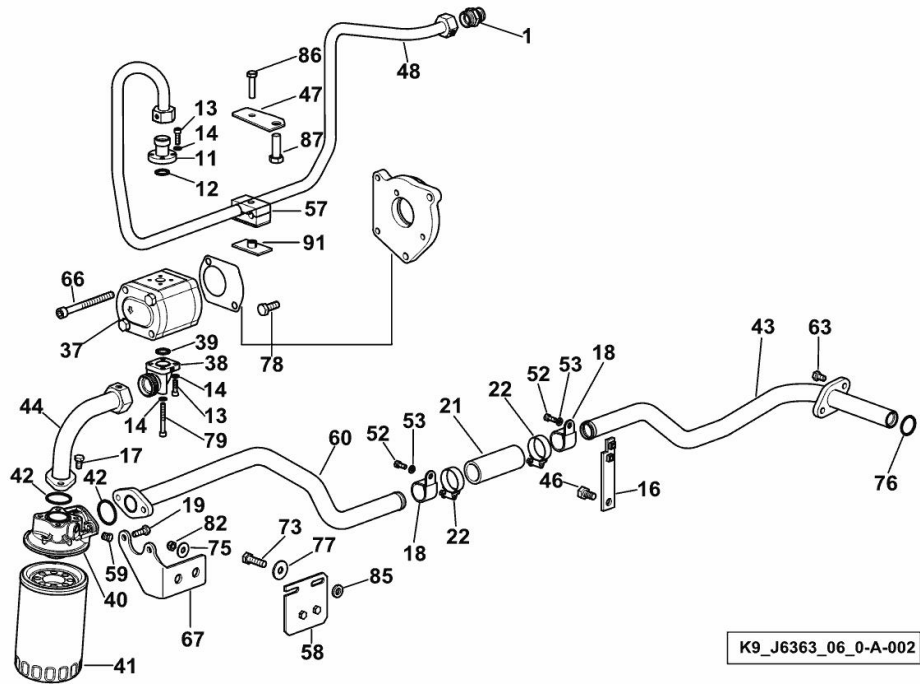
- FOR TYPES WITHOUT PNEUMATIC BRAKE [Agrotron M 610 -> WSXJ630200LD10010 -> 30000] -> 10497 - 10588 <-



1	01177450	2	pipe fitting m 22 p.1.5x18
11	04450491	1	flange
12	06214809	1	oil seal 18x2,5
13	2.0312.106.2	6	screw m 6 p.1 x 20
14	2.1474.007.2	8	washer 6, d128
16	04453484.2	1	bracket
17	2.0114.207.2	4	screw m 8 p.1.25 x 20
18	01213283	1	clamp Ø 20/28
19	2.0112.211.2	2	screw m 8 p.1.25 x 30
21	0.016.2948.0	1	tube 28x37.6x100
22	2.6859.154.0	2	fascia
37	04450322	1	hydraulic pump 16 ccm ☞ 04450322
38	16054977	1	flange Ø 28 / m 36 p.2
39	2.1530.066.0	1	oil seal 25.07x2.62
40	2.4419.350.1/40	1	head
41	2.4419.350.0/10	1	hydr.oil filter elem. Ø 107.7
42	2.1530.095.0	2	oil seal 36.14x2.62
43	04450573/10	1	tube
44	04455266.2	1	tube
46	2.0114.307.2	2	screw m 10 x 20, d933
47	0.016.6364.0	1	support
48	04455973.2	1	pipng
52	2.0112.005.2	1	screw m 6 p.1 x 16
53	2.1310.002.2	2	flat washer 6.4x12.5
57	04453993	1	fascia 18-10
58	0.015.5417.3	1	link
59	04450524	1	plug
60	04455971.2	1	tube
63	2.0114.209.2	2	screw m 8 x 25
66	2.0312.327.2	2	screw m 10 p.1.5x110
67	04455126	1	support
73	2.0112.313.2	2	screw m 10 p.1.5 x 35
75	2.1312.004.2	3	washer 8x24x2
76	04450572	1	oil seal 28x2
77	2.1312.005.2	2	washer 10.2
78	00290646	1	flange ☞ 00290646
79	2.0312.116.2	2	screw m 6 p.1 x 50
82	2.1121.005.2	2	nut m 8 p.1.25

HYDRAULIC SYSTEM OPEN CENTER

Fig.	P/n	QTY	Name
85	04455348	2	spacer
86	2.0112.213.2	1	screw m 8 p.1.25 x 35
87	2.0114.413.2	1	screw m 12 x 35
91	01180338	1	small plate



K9_J6363_06_0-A-002

Buy Now



Our support email:

ebooklibonline@outlook.com