

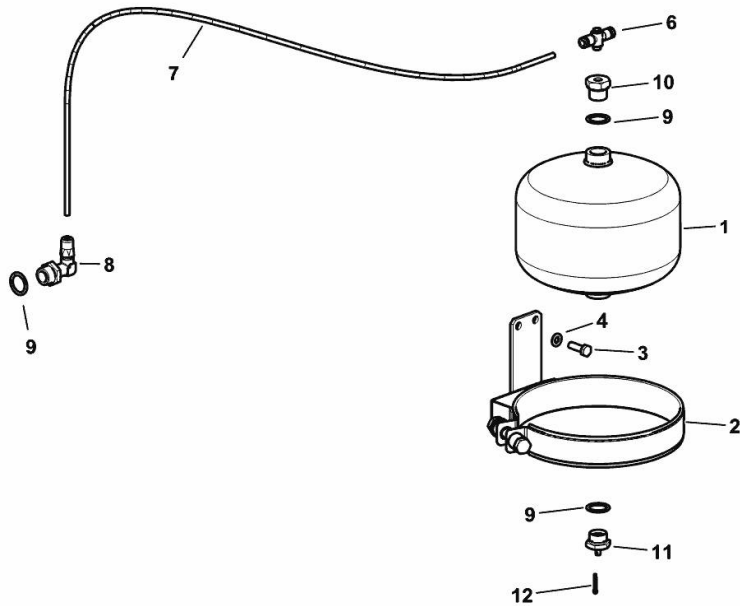
AIR SUSPENSION TANK

Fig.	P/n	QTY	Name
------	-----	-----	------

Notes:

[MACH 200 ST] -> 50010

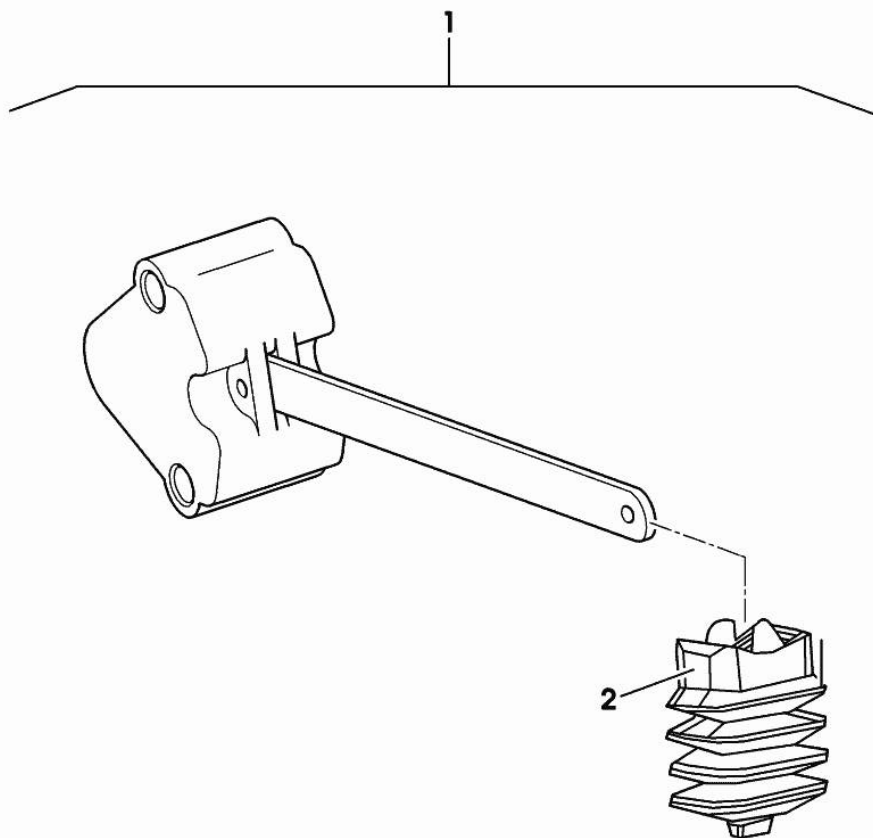
1	0.016.0386.4	1	tank
2	0.016.5137.3	1	bracket
3	2.0114.209.2	2	screw m 8 x 25
4	2.1475.102.2	2	washer 8.4 x 16
6	0.011.2977.0	1	connection
7	0.012.6739.0	6	tube Ø 6
8	04432095	1	pipe fitting L
9	2.1560.018.0	3	gasket 22.2 x 29
10	2.3339.951.2	1	reduction m22 p.1,5 - 1/8"
11	0.012.3383.0	1	valve
12	2.1690.306.2	1	split pin 3.2 x 16



K9_AB376_03_0-A-003

RELAY VALVE

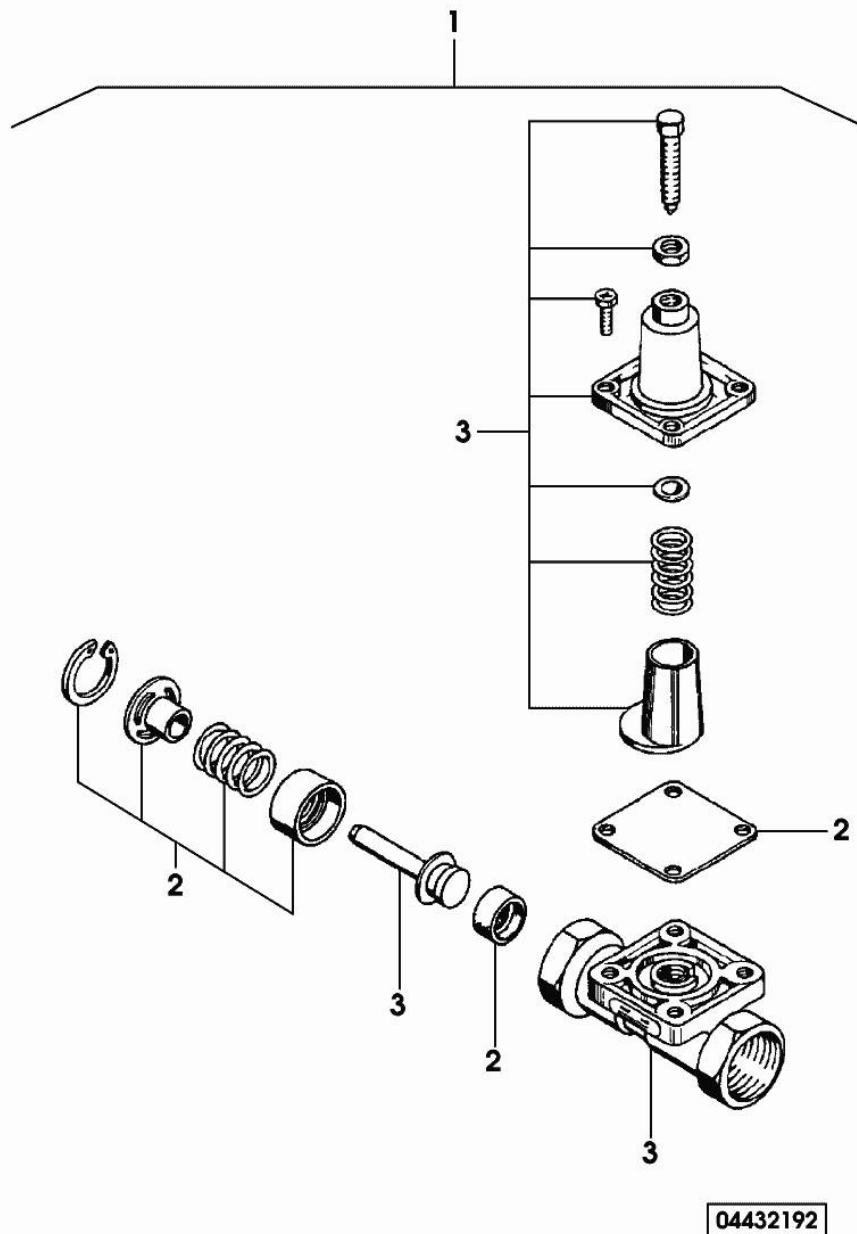
Fig.	P/n	QTY	Name
1	04432191	1	valve
2	0.900.0134.9	1	bellows



04432191

PRESSURE CONTROL VALVE

Fig.	P/n	QTY	Name
1	04432192	1	valve
2	0.900.0460.1	1	spare parts kit
3	0.000.0000.1		cannot be supplied

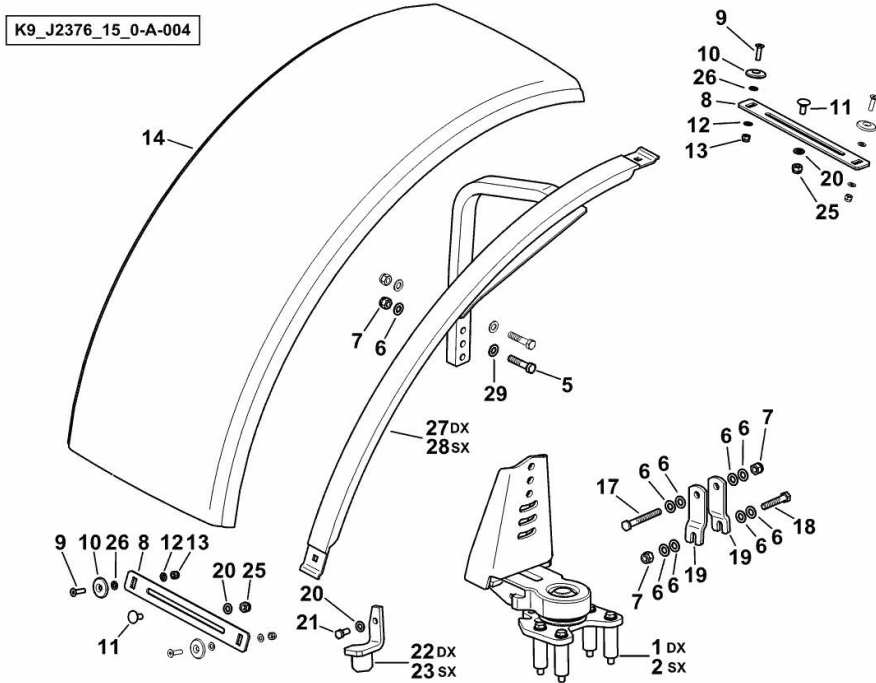


SELF-ADJUSTING FRONT FENDERS mm 470

Fig.	P/n	QTY	Name
------	-----	-----	------

Notes:
[MACH 200 ST]

1	0.015.7391.4/10	1	support dx/rh/re ☞ 0.015.7391.4/10
2	0.015.7394.4/10	1	support sx/lh/li ☞ 0.015.7394.4/10
5	2.0112.421.2	4	screw m 12 p.1.75 x 60
6	2.1475.004.2	20	spring washer 12
7	2.1120.007.2	10	self-locking nut m 12 p.1.75
8	0.014.7167.0	4	support
9	2.0349.004.0	8	screw m 8 p.1.25 x 30
10	2.1399.020.0/10	8	washer
11	2.0020.306.2	4	screw m 10 x 25
12	2.1475.002.2	8	conical washer 8
13	2.1120.005.2	8	nut m 8 p.1.25
14	0.020.5209.0	2	fender mm 470
17	2.0399.281.2	2	screw m 12 p.1.75x100
18	2.0112.422.2	2	screw m 12 p.1.75 x 65
19	0.012.3220.0/10	4	bracket
20	2.1475.003.2	6	washer 10
21	2.0112.309.2	2	screw m 10 p.1.5 x 25
22	0.012.3221.2	1	bracket dx/rh/re
23	0.012.3218.2	1	bracket sx/lh/li
25	2.1120.006.2	4	nut m 10 p.1.5
26	2.1310.004.2	8	flat washer 8.4x17
27	0.019.4603.3/10	1	chassis frame dx/rh/re
28	0.019.4604.3/10	1	chassis frame sx/lh/li
29	01174738	4	flat washer 12.5x26x6



SELF-ADJUSTING FRONT FENDERS mm 520

K9_J2376_16_0-A-004

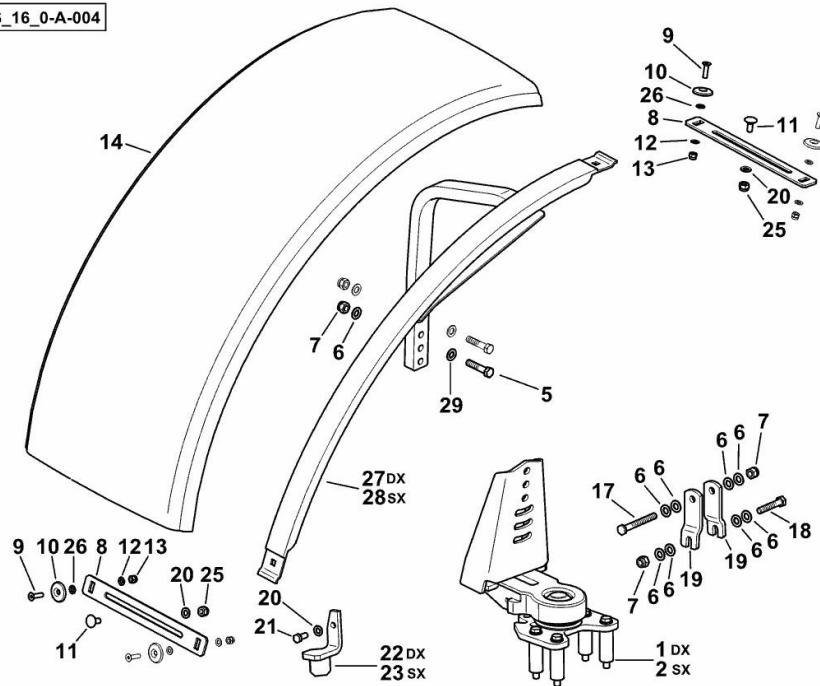


Fig.	P/n	QTY	Name
------	-----	-----	------

Notes:
[MACH 200 ST]

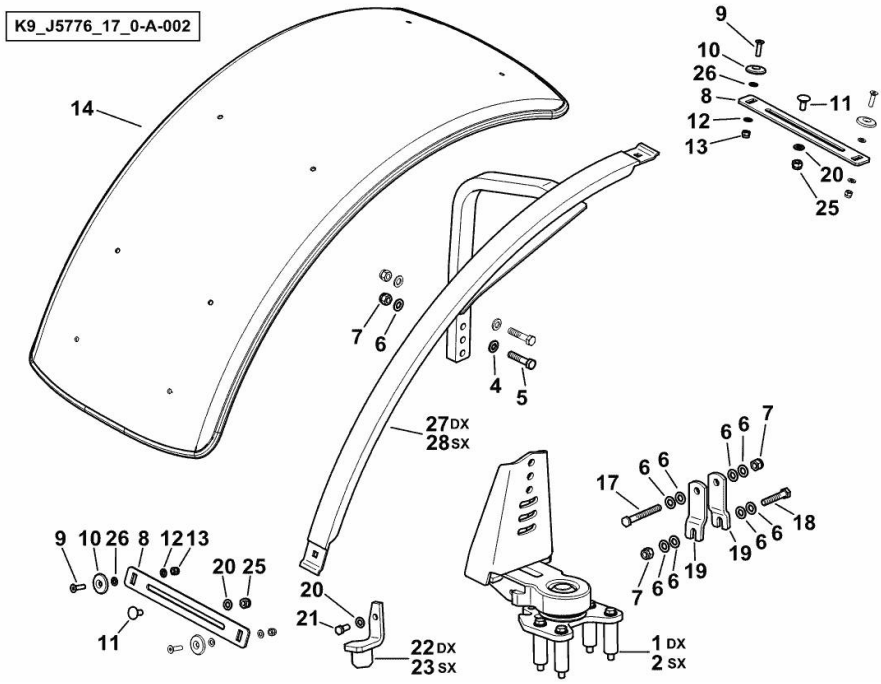
1	0.015.7391.4/10	1	support dx/rh/re ☞ 0.015.7391.4/10
2	0.015.7394.4/10	1	support sx/lh/li ☞ 0.015.7394.4/10
5	2.0112.421.2	4	screw m 12 p.1.75 x 60
6	2.1475.004.2	20	spring washer 12
7	2.1120.007.2	10	self-locking nut m 12 p.1.75
8	0.014.7167.0	4	support
9	2.0349.004.0	8	screw m 8 p.1.25 x 30
10	2.1399.020.0/10	8	washer
11	2.0020.306.2	4	screw m 10 x 25
12	2.1475.002.2	8	conical washer 8
13	2.1120.005.2	8	nut m 8 p.1.25
14	04455240/10	2	fender mm 520
17	2.0399.281.2	2	screw m 12 p.1.75x100
18	2.0112.422.2	2	screw m 12 p.1.75 x 65
19	0.012.3220.0/10	4	bracket
20	2.1475.003.2	6	washer 10
21	2.0112.309.2	2	screw m 10 p.1.5 x 25
22	0.012.3221.2	1	bracket dx/rh/re
23	0.012.3218.2	1	bracket sx/lh/li
25	2.1120.006.2	4	nut m 10 p.1.5
26	2.1310.004.2	8	flat washer 8.4x17
27	0.019.4603.3/10	1	chassis frame dx/rh/re
28	0.019.4604.3/10	1	chassis frame sx/lh/li
29	01174738	4	flat washer 12.5x26x6

SELF-ADJUSTING FRONT FENDERS mm 620

Fig.	P/n	QTY	Name
------	-----	-----	------

Notes:
[MACH 200 ST]

1	0.015.7391.4/10	1	support dx/rh/re ☞ 0.015.7391.4/10
2	0.015.7394.4/10	1	support sx/lh/li ☞ 0.015.7394.4/10
4	01174738	4	flat washer 12.5x26x6
5	2.0112.421.2	4	screw m 12 p.1.75 x 60
6	2.1475.004.2	20	spring washer 12
7	2.1120.007.2	10	self-locking nut m 12 p.1.75
8	0.014.7167.0	4	support
9	2.0349.004.0	8	screw m 8 p.1.25 x 30
10	2.1399.020.0/10	8	washer
11	2.0020.306.2	4	screw m 10 x 25
12	2.1475.002.2	8	conical washer 8
13	2.1120.005.2	8	nut m 8 p.1.25
14	04433326/10	2	fender mm 620
17	2.0399.281.2	2	screw m 12 p.1.75x100
18	2.0112.422.2	2	screw m 12 p.1.75 x 65
19	0.012.3220.0/10	4	bracket
20	2.1475.003.2	6	washer 10
21	2.0112.309.2	2	screw m 10 p.1.5 x 25
22	0.012.3221.2	1	bracket dx/rh/re
23	0.012.3218.2	1	bracket sx/lh/li
25	2.1120.006.2	4	nut m 10 p.1.5
26	2.1310.004.2	8	flat washer 8.4x17
27	0.019.6459.3	1	chassis frame dx/rh/re
28	0.019.6460.3	1	chassis frame sx/lh/li

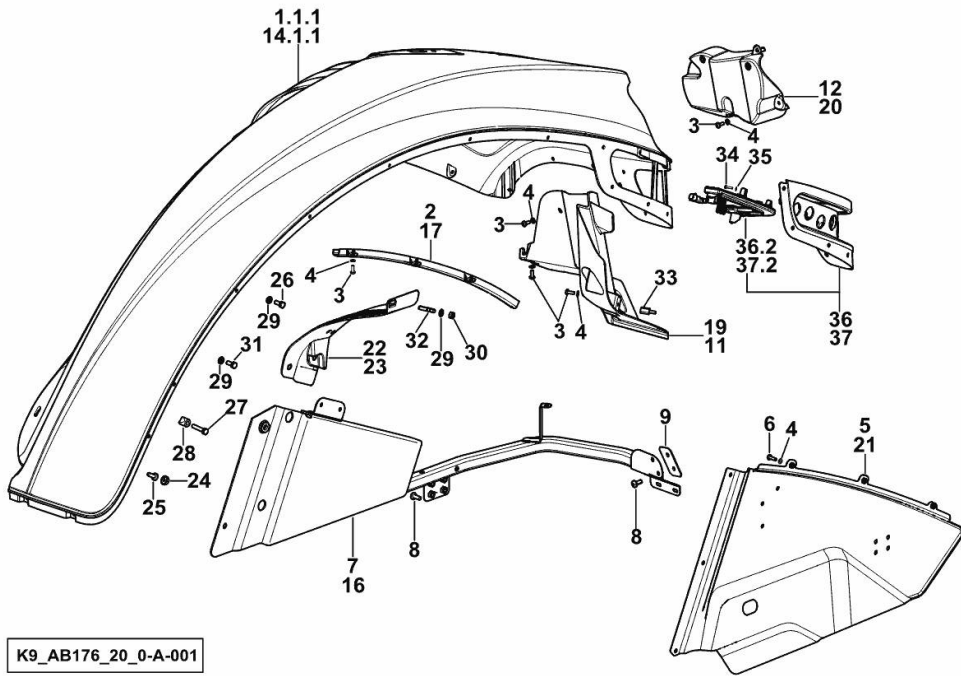


REAR MUDGUARDS SX/LH/LI - DX/RH/RE

Fig.	P/n	QTY	Name
------	-----	-----	------

Notes:

- FOR TYPES WITH COURTESY LIGHT ON FENDER PUSHBUTTON PANEL [MACH 200 ST]



1.1.1	0.019.1300.2/10	1	fender dx/rh/re
2	0.019.2926.0	1	channel dx/rh/re
3	2.0330.406.2	36	screw m 6 p.1.0 x 16
4	2.1310.002.2	42	flat washer 6.4x12.5
5	0.020.5775.3	1	panel dx/rh/re
6	2.0330.407.2	5	screw m 6 p.1 x 20
7	0.019.5818.3/10	1	support dx/rh/re
8	2.0330.507.2	12	screw m 8 p.1.25 x 20
9	0.019.3255.3	2	small plate
11	0.019.1298.0/20	1	cover dx/rh/re
12	0.019.1295.2	1	cover dx/rh/re
14.1.1	0.020.7601.2	1	fender sx/lh/li
16	0.020.7127.3	1	brace sx/lh/li
17	0.019.2927.0	1	channel sx/lh/li
19	0.019.1305.0/20	1	cover sx/lh/li
20	0.019.1304.2	1	cover sx/lh/li
21	0.020.5774.3	1	brace sx/lh/li
22	0.017.1168.0/10	1	front grille dx/rh/re
23	0.017.1166.0/10	1	front grille sx/lh/li
24	04419538	2	cap
25	04428727	2	screw
26	04426352	4	screw m 8 p.1.25 x 20
27	2.0112.215.2	2	screw m 8 p.1.25 x 40
28	04415539	2	bushing
29	2.1310.004.2	16	flat washer 8.4x17
30	2.1011.105.2	4	nut m 8 p.1.25
31	2.0112.207.2	8	screw m 8 p 1.25 x 20
32	2.0422.207.2	4	stud bolt m 8 p 1.25 x 30
33	0.020.4537.0	4	spacer
34	2.0330.206.2	4	screw m4x16 d933
35	2.1310.028.2	4	flat washer
36	0.020.7966.4/10	1	front grille dx/rh/re
36.2	0.019.5137.4/10	1	light dx/rh/re
37	0.020.7967.4/10	1	front grille sx/lh/li
37.2	0.019.5138.4/10	1	light sx/lh/li

Buy Now



Our support email:

ebooklibonline@outlook.com