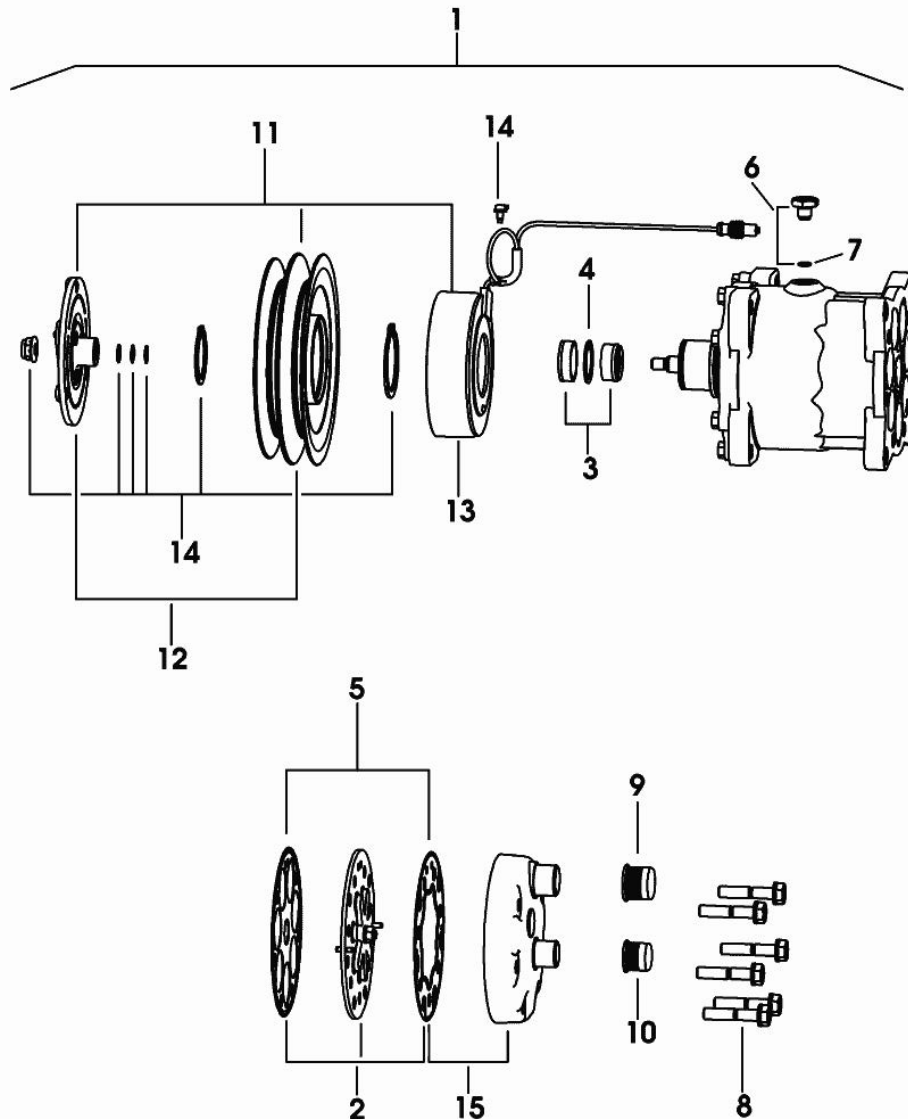


COMPRESSOR-PARTS

04437338

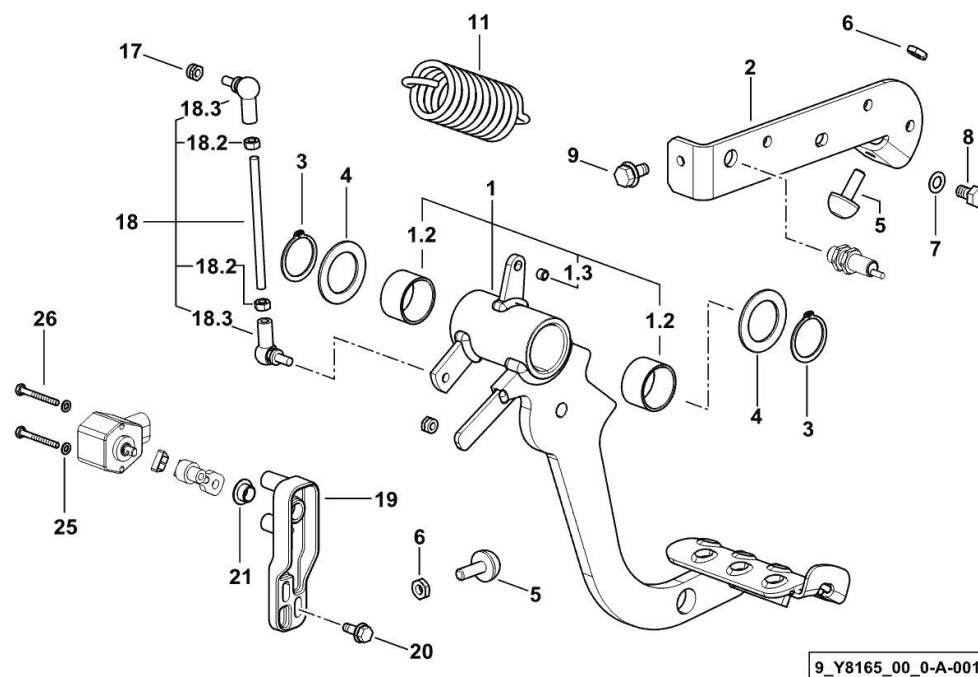
| Fig. | P/n | QTY | Name |
|------|--------------|-----|-------------------|
| 1 | 04437338 | 1 | compressor R 134a |
| 2 | 0.010.3628.0 | 1 | valve |
| 3 | 0.010.3628.1 | 1 | gasket set |
| 4 | 0.010.2132.0 | 1 | circlip |
| 5 | 0.010.3628.2 | 1 | gasket set |
| 6 | 0.010.3629.0 | 1 | plug |
| 7 | 0.010.3629.1 | 1 | special oil seal |
| 8 | 0.010.2133.0 | 6 | screw |
| 9 | 0.010.3629.2 | 1 | plug |
| 10 | 0.010.3630.0 | 1 | plug |
| 11 | 0.010.3630.1 | 1 | pulley |
| 12 | 0.010.3630.2 | 1 | pulley |
| 13 | 0.010.3631.0 | 1 | electromagnet |
| 14 | 0.010.3631.1 | 1 | sub-assy parts |
| 15 | 0.010.3627.2 | 1 | head |

CLUTCH CONTROL

| Fig. | P/n | QTY | Name |
|------|-----|-----|------|
|------|-----|-----|------|

Notes:

[Nitro 110 T4i Hi-Profile 2WD] [Nitro 110 T4i Hi-Profile 4WD]



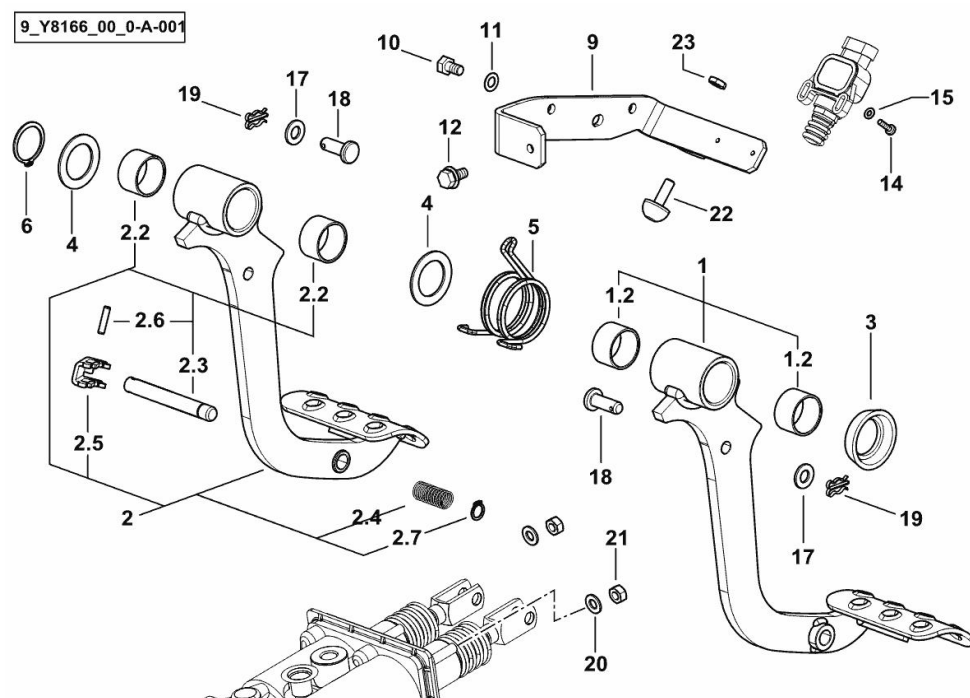
| | | | |
|------|-----------------|---|--------------------------|
| 1 | 0.018.7846.4/20 | 1 | pedal |
| 1.2 | 2.1555.315.0 | 2 | bushing 30x34x20 |
| 1.3 | 04429987 | 1 | special bushing 5x7x5 |
| 2 | 0.018.7936.0/10 | 1 | bracket |
| 3 | 2.1410.012.1 | 2 | circlip 30 |
| 4 | 2.1599.268.0 | 2 | shoulder ring |
| 5 | 04384850 | 2 | contact surface m 8 x 25 |
| 6 | 2.1011.205.2 | 2 | nut m 8 p.1.25 |
| 7 | 2.1470.004.2 | 1 | lock washer 8 |
| 8 | 2.0112.204.2 | 1 | screw m 8 p.1.25x14 |
| 9 | 2.0365.305.3 | 1 | screw |
| 11 | 2.4049.185.2 | 1 | spring 42x32.4x97x4.8 |
| 17 | 2.1120.103.2 | 2 | nut m 6 |
| 18 | 0.012.6388.4 | 1 | rod |
| 18.2 | 2.1011.103.2 | 2 | nut m 6 p.1 |
| 18.3 | 0.010.1796.0 | 2 | universal joint |
| 19 | 0.012.6399.2/10 | 1 | support |
| 20 | 2.0365.205.3 | 2 | screw |
| 21 | 2.2841.034.0 | 1 | bushing 10x12x7 |
| 25 | 2.1470.052.2 | 2 | lock washer 4 |
| 26 | 01127019 | 2 | screw m 4x35 |

BRAKE CONTROLS

| Fig. | P/n | QTY | Name |
|------|-----|-----|------|
|------|-----|-----|------|

Notes:

[Nitro 110 T4i Hi-Profile 2WD] [Nitro 110 T4i Hi-Profile 4WD]



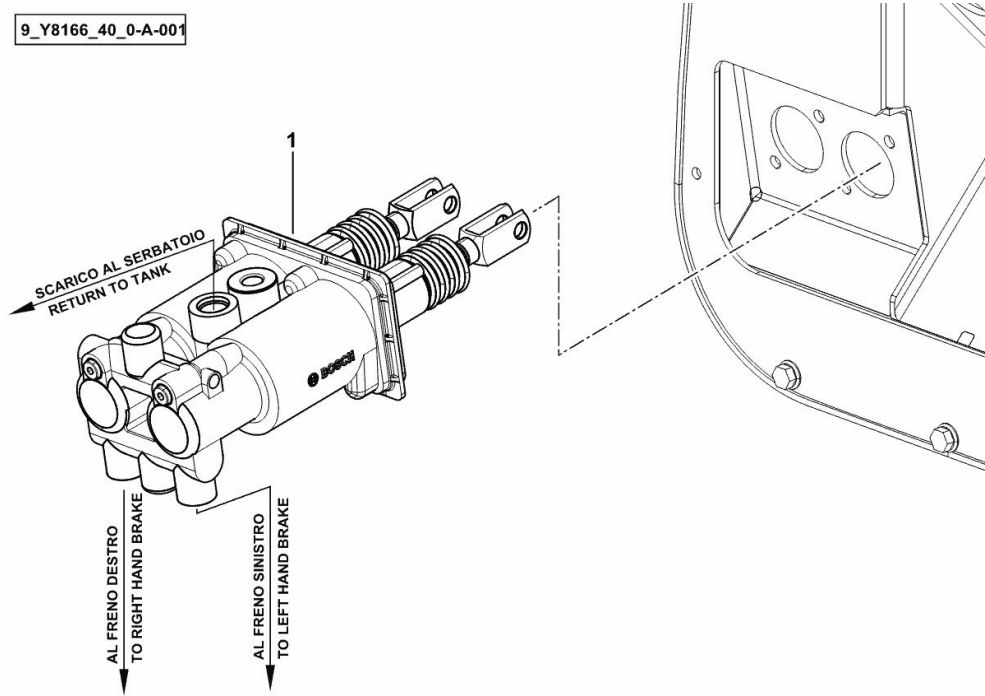
| | | | |
|-----|-----------------|---|--------------------------|
| 1 | 0.018.7782.4/30 | 1 | pedal sx/lh/li |
| 1.2 | 2.1555.315.0 | 2 | bushing 30x34x20 |
| 2 | 0.018.7781.4/40 | 1 | pedal |
| 2.2 | 2.1555.315.0 | 2 | bushing 30x34x20 |
| 2.3 | 0.019.5606.0/10 | 1 | pin |
| 2.4 | 2.4019.586.2 | 1 | spring |
| 2.5 | 0.019.5608.0/10 | 1 | latch |
| 2.6 | 2.1632.011.2 | 1 | roll pin |
| 2.7 | 2.1410.002.2 | 1 | circlip |
| 3 | 2.1599.546.0 | 1 | washer 30.5 |
| 4 | 2.1599.268.0 | 2 | shoulder ring |
| 5 | 2.4099.182.0 | 1 | spring |
| 6 | 2.1410.012.1 | 1 | circlip 30 |
| 9 | 0.018.7847.2 | 1 | bracket |
| 10 | 2.0112.204.2 | 1 | screw m 8 p.1.25x14 |
| 11 | 2.1470.004.2 | 1 | lock washer 8 |
| 12 | 2.0365.305.3 | 1 | screw |
| 14 | 2.0362.005.2 | 2 | screw m4x15 |
| 15 | 2.1310.028.2 | 2 | flat washer |
| 17 | 2.1310.006.2 | 2 | flat washer 10.5x21 |
| 18 | 2.1671.407.2 | 2 | pin 10 x 28 |
| 19 | 01175876 | 2 | split pin |
| 20 | 2.1310.004.2 | 4 | flat washer 8.4x17 |
| 21 | 2.1011.105.2 | 4 | nut m 8 p.1.25 |
| 22 | 04384850 | 1 | contact surface m 8 x 25 |
| 23 | 2.1011.205.2 | 1 | nut m 8 p.1.25 |

BRAKE CYLINDER

| Fig. | P/n | QTY | Name |
|------|-----|-----|------|
|------|-----|-----|------|

Notes:
[Nitro 110 T4i Hi-Profile 2WD] [Nitro 110 T4i Hi-Profile 4WD]

| | | | |
|---|--------------|---|------------|
| 1 | 2.3729.023.0 | 1 | brake pump |
|---|--------------|---|------------|



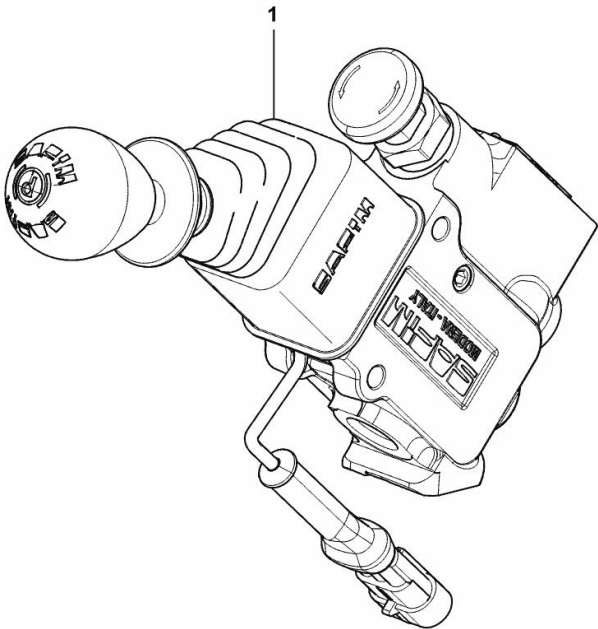
PARK CONTROL - BRAKE

| Fig. | P/n | QTY | Name |
|------|-----|-----|------|
|------|-----|-----|------|

Notes:

[Nitro 110 T4i Hi-Profile 2WD] [Nitro 110 T4i Hi-Profile 4WD]

| | | | |
|---|-----------------|---|---------------------------------------|
| 1 | 2.3729.719.0/20 | 1 | valve PARK BRAKE 🔗 2.3729.719.0/20 |
|---|-----------------|---|---------------------------------------|



9_J1566_30_0-A-001

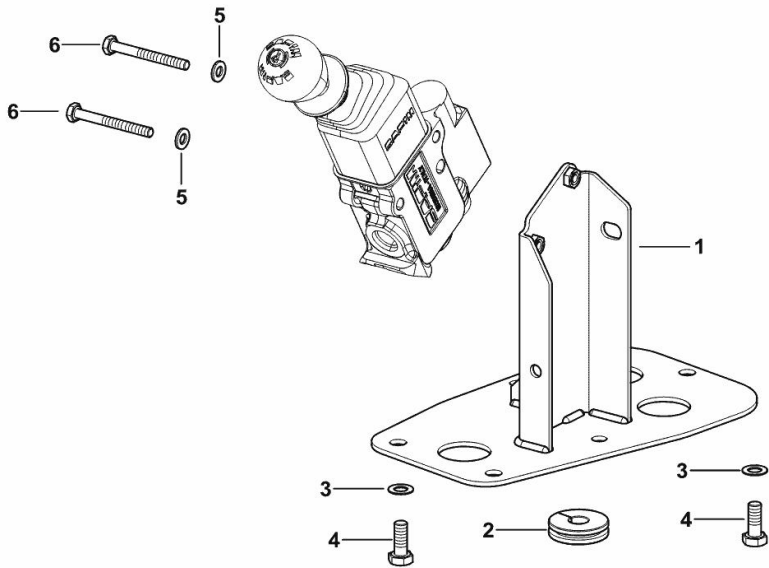
PARK-BRAKE SUPPORT

| Fig. | P/n | QTY | Name |
|------|-----|-----|------|
|------|-----|-----|------|

Notes:

[Nitro 110 T4i Hi-Profile 2WD] [Nitro 110 T4i Hi-Profile 4WD]

| | | | |
|---|-----------------|---|-----------------------|
| 1 | 0.019.1027.3/20 | 1 | bracket |
| 2 | 2.6569.072.0 | 3 | rubber plug |
| 3 | 2.1470.004.2 | 5 | lock washer 8 |
| 4 | 2.0112.207.2 | 5 | screw m 8 p 1.25 x 20 |
| 5 | 2.1310.002.2 | 2 | flat washer 6.4x12.5 |
| 6 | 2.0112.020.2 | 2 | screw m 6 p.1 x 55 |



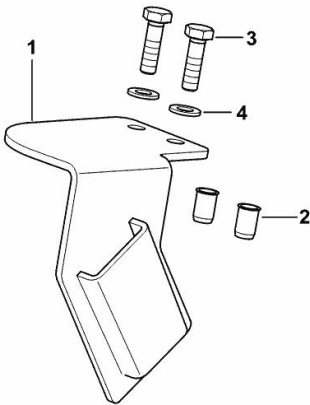
9_Y6966_03_0-A-001

HANDBRAKE BRACKET FOR TRAILER

| Fig. | P/n | QTY | Name |
|------|-----|-----|------|
|------|-----|-----|------|

Notes:
- ITALY [Nitro 110 T4i Hi-Profile 2WD] - ITALY [Nitro 110 T4i Hi-Profile 4WD]

| | | | |
|---|--------------|---|---------------------|
| 1 | 0.015.9215.2 | 1 | bracket |
| 2 | 2.1142.012.2 | 2 | insert m10 |
| 3 | 2.0114.313.2 | 2 | screw m 10 x 35 |
| 4 | 2.1310.006.2 | 2 | flat washer 10.5x21 |



9_L3944_20_0-A-001



Our support email:

ebooklibonline@outlook.com