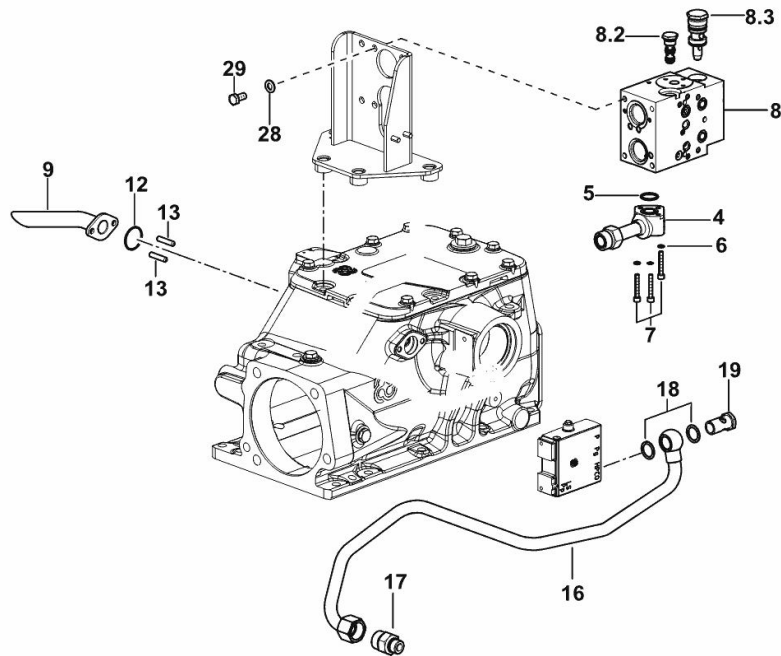


AUXILIARY CONTROL VALVE SYSTEM

Fig.	P/n	QTY	Name
------	-----	-----	------

Notes:

- FOR TYPES WITH ELECTRICAL REMOTE VALVE CONTROL [Nitro 120 T4i -> ZKDY7402W0TL10001]



9_Y8888_00_0-B-001

4	0.017.8166.3/10	1	tube
5	2.1532.062.0	1	oil seal 23.81
6	2.1480.012.2	3	washer 6, d128
7	2.0312.114.2	3	screw m 6 p.1x40
8	0.019.1848.4	1	valve
8.2	2.3729.686.0	1	valve
8.3	2.3729.013.0	1	valve
9	0.017.8168.3	1	tube
12	2.1532.092.0	1	ring 34.65x1.78
13	2.0432.005.7	2	stud bolt m 8 p.1.5 / p.1 x 25
16	0.017.8136.3	1	tube
17	2.3275.016.0	1	pipe fitting m 22
18	2.1560.018.0	2	gasket 22.2 x 29
19	2.3335.009.2	1	pipe union m 22 p.1.5 x 39
28	2.1475.003.2	4	washer 10
29	2.0112.307.2	4	screw m 10 p.1.5 x 20

Nitro 120 T4i -> ZKDY7402W0TL10001

Section: H0 - HYDRAULIC AND PNEUMATIC SYSTEM]

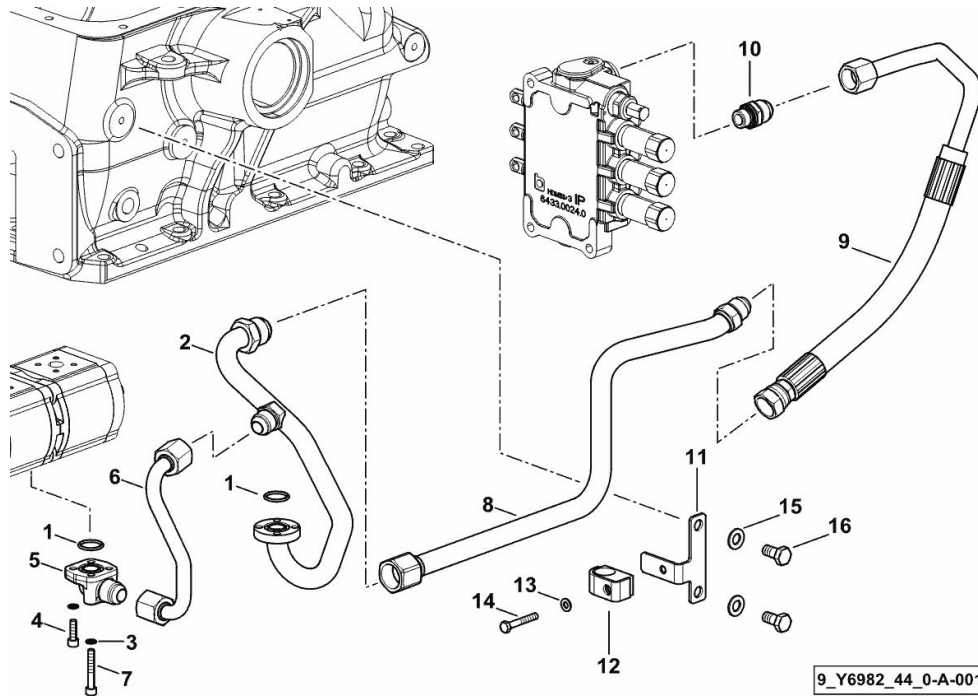
Ref: H0.01.40 (1)

SYSTEM FROM HYDRAULIC PUMP TO 6-WAY DIRECTIONAL CONTROL VALVE

Fig.	P/n	QTY	Name
------	-----	-----	------

Notes:

- WITHOUT HYDRAULIC BRAKING FOR TRAILER - WITHOUT OIL FLOW REGULATOR [Nitro 120 T4i -> ZKDY7402W0TL10001]



1	2.1531.052.0	2	oil seal 20.29 x 2.62
2	0.019.1172.3	1	tube
3	2.1480.012.2	8	washer 6, d128
4	2.0312.106.2	6	screw m 6 p.1 x 20
5	0.008.9626.0	1	pipe fitting
6	0.019.1173.3	1	tube
7	2.0312.114.2	2	screw m 6 p.1x40
8	0.019.3759.3	1	tube
9	0.015.1339.3	1	tube
10	2.3249.141.2	1	pipe fitting 7/8 JIC-M18
11	0.019.3875.3	1	bracket
12	2.3320.111.0	1	terminal Ø 20
13	2.1310.002.2	1	flat washer 6.4x12.5
14	2.0112.015.2	1	screw m 6 p.1x40
15	2.1475.003.2	2	washer 10
16	2.0112.307.2	2	screw m 10 p.1.5 x 20

Nitro 120 T4i -> ZKDY7402W0TL10001

Section: H0 - HYDRAULIC AND PNEUMATIC SYSTEM]

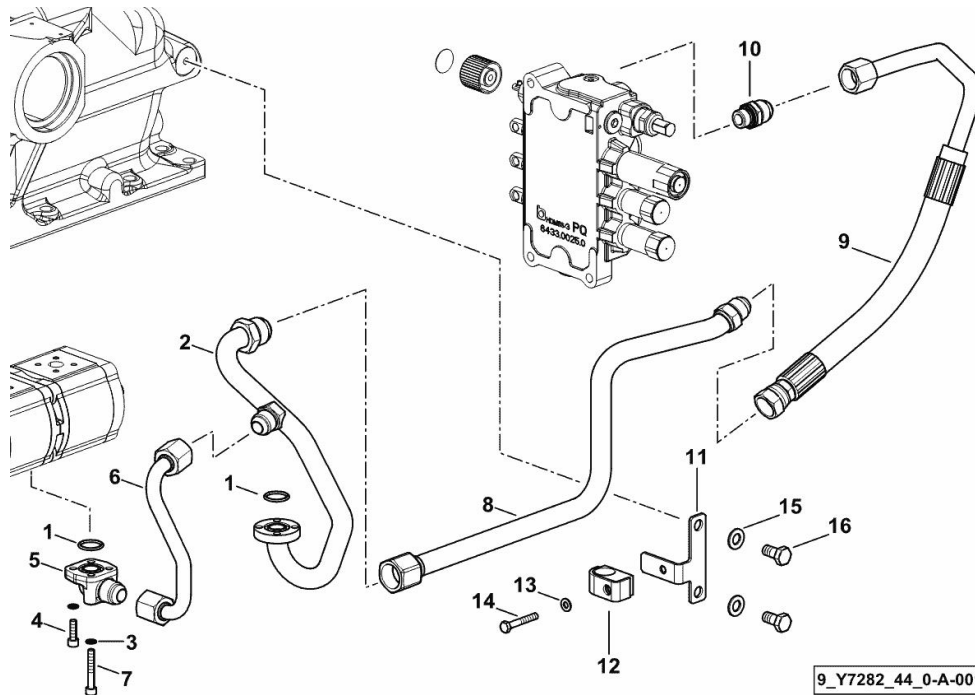
Ref: H0.01.41 (1)

SYSTEM FROM HYDRAULIC PUMP TO 6-WAY DIRECTIONAL CONTROL VALVE

Fig.	P/n	QTY	Name
------	-----	-----	------

Notes:

- WITHOUT HYDRAULIC BRAKING FOR TRAILER - WITH OIL FLOW REGULATOR [Nitro 120 T4i -> ZKDY7402W0TL10001]



1	2.1531.052.0	2	oil seal 20.29 x 2.62
2	0.019.1172.3	1	tube
3	2.1480.012.2	8	washer 6, d128
4	2.0312.106.2	6	screw m 6 p.1 x 20
5	0.008.9626.0	1	pipe fitting
6	0.019.1173.3	1	tube
7	2.0312.114.2	2	screw m 6 p.1x40
8	0.019.3759.3	1	tube
9	0.015.6606.3	1	tube
10	2.3249.141.2	1	pipe fitting 7/8 JIC-M18
11	0.019.3875.3	1	bracket
12	2.3320.111.0	1	terminal Ø 20
13	2.1310.002.2	1	flat washer 6.4x12.5
14	2.0112.015.2	1	screw m 6 p.1x40
15	2.1475.003.2	2	washer 10
16	2.0112.307.2	2	screw m 10 p.1.5 x 20

9_Y7282_44_0-A-001

Nitro 120 T4i -> ZKDY7402W0TL10001

Section: H0 - HYDRAULIC AND PNEUMATIC SYSTEM|

Ref: H0.01.42 (1)

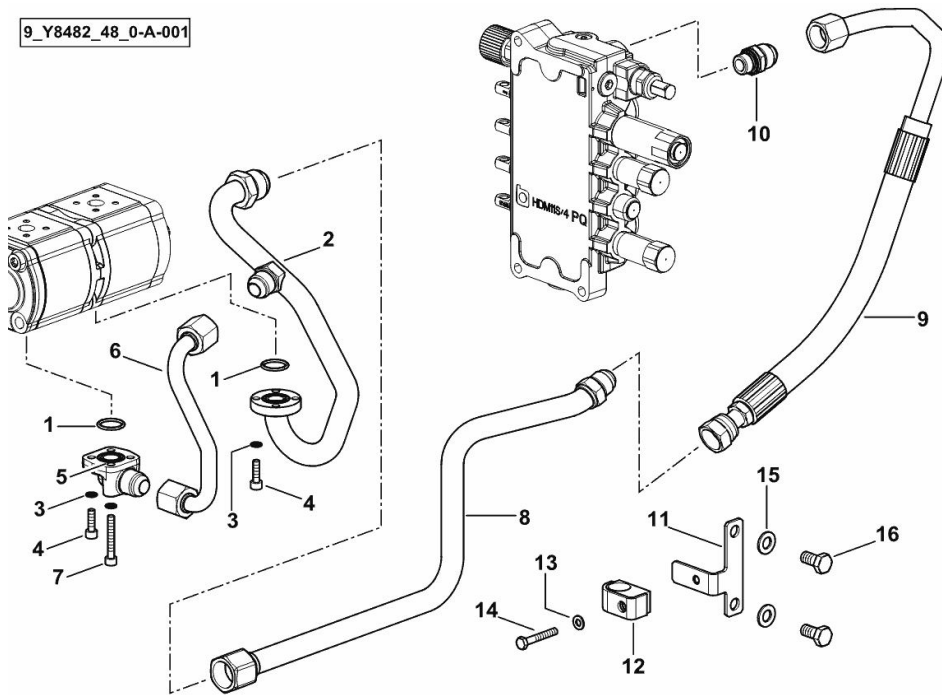
HYDRAULIC PUMP SYSTEM WITH 8-WAY REMOTE VALVE

Fig.	P/n	QTY	Name
------	-----	-----	------

Notes:

- WITHOUT HYDRAULIC BRAKING FOR TRAILER - WITH OIL FLOW REGULATOR - 60LT [Nitro 120 T4i -> ZKDY7402W0TL10001]

9_Y8482_48_0-A-001



1	2.1531.052.0	2	oil seal 20.29 x 2.62
2	0.019.1172.3	1	tube
3	2.1480.012.2	8	washer 6, d128
4	2.0312.106.2	6	screw m 6 p.1 x 20
5	0.008.9626.0	1	pipe fitting
6	0.019.1173.3	1	tube
7	2.0312.114.2	2	screw m 6 p.1x40
8	0.019.3759.3	1	tube
9	0.019.1205.3	1	tube
10	2.3249.141.2	1	pipe fitting 7/8 JIC-M18
11	0.019.3875.3	1	bracket
12	2.3320.111.0	1	terminal Ø 20
13	2.1310.002.2	1	flat washer 6.4x12.5
14	2.0112.015.2	1	screw m 6 p.1x40
15	2.1475.003.2	2	washer 10
16	2.0112.307.2	2	screw m 10 p.1.5 x 20

Nitro 120 T4i -> ZKDY7402W0TL10001

Section: H0 - HYDRAULIC AND PNEUMATIC SYSTEM]

Ref: H0.01.43 (1)

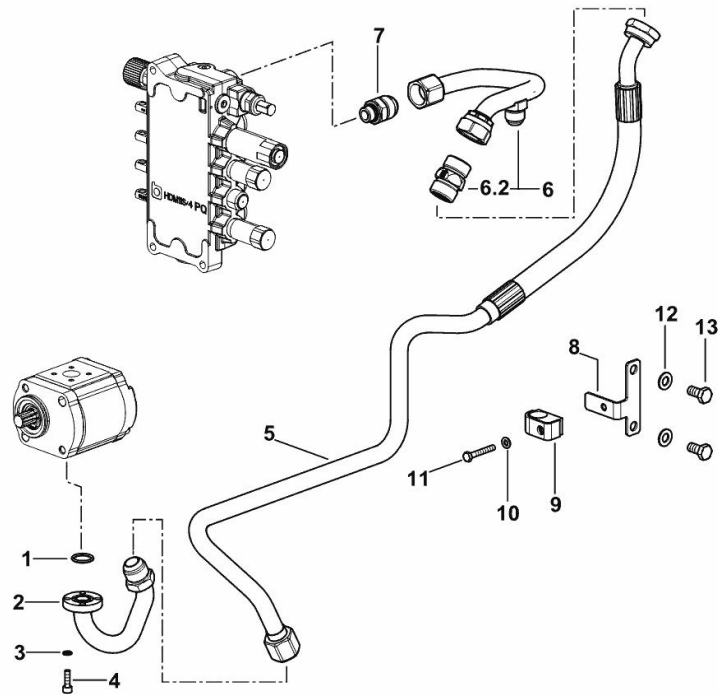
HYDRAULIC PUMP SYSTEM WITH 8-WAY REMOTE VALVE

Fig.	P/n	QTY	Name
------	-----	-----	------

Notes:

- WITHOUT HYDRAULIC BRAKING FOR TRAILER - WITH OIL FLOW REGULATOR - 60LT ECO [Nitro 120 T4i -> ZKDY7402W0TL10001]

1	2.1531.052.0	1	oil seal 20.29 x 2.62
2	0.015.1442.3	1	tube
3	2.1480.012.2	4	washer 6, d128
4	2.0312.106.2	4	screw m 6 p.1 x 20
5	0.019.5273.3	1	tube
6	0.019.5221.4	1	tube
6.2	2.3729.034.0	1	valve
7	2.3249.148.2	1	pipe fitting m 18 - 1/16" JIC
8	0.019.3875.3	1	bracket
9	2.3320.111.0	1	terminal Ø 20
10	2.1310.002.2	1	flat washer 6.4x12.5
11	2.0112.015.2	1	screw m 6 p.1x40
12	2.1310.006.2	2	flat washer 10.5x21
13	2.0112.307.2	2	screw m 10 p.1.5 x 20



9_Y8282_48_0-A-001

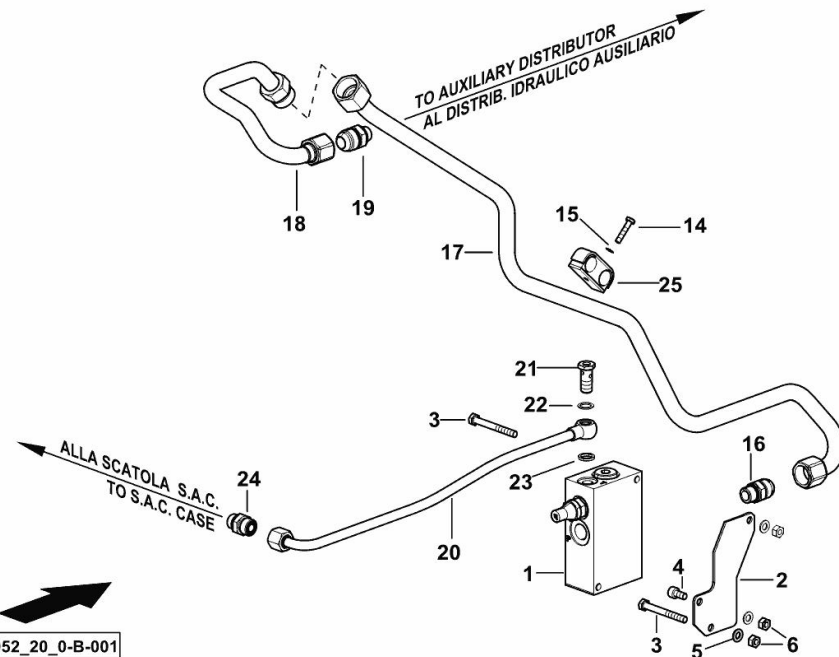
HYDRAULIC SYSTEM

Fig.	P/n	QTY	Name
------	-----	-----	------

Notes:

- 60 LT [Nitro 120 T4i -> ZKDY7402W0TL10001]

1	04453271/10	1	valve
2	0.019.5991.0	1	bracket
3	2.0112.223.2	2	screw m 8 p.1.25x70
4	2.0312.204.2	1	screw m 8 p.1.25 x 16
5	2.1475.002.2	3	conical washer 8
6	2.1011.105.2	3	nut m 8 p.1.25
14	2.0112.011.2	1	screw m 6 p.1x30
15	2.1470.002.2	6	lock washer 6
16	2.3249.158.2	1	pipe fitting
17	0.019.5996.3	1	tube
18	0.020.2669.3	1	tube
19	2.3249.148.2	1	pipe fitting m 18 - 1/16" JIC
20	0.019.6240.3	1	tube
21	2.3335.053.2	1	pipe union m 14 p.1.5x32
22	2.1560.010.0	1	gasket 14.2 x 20
23	2.1569.171.0	1	gasket 14.2 x 20 x 3
24	2.3272.009.0	1	pipe fitting m 18/12
25	2.3320.221.0	1	terminal Ø 20/20



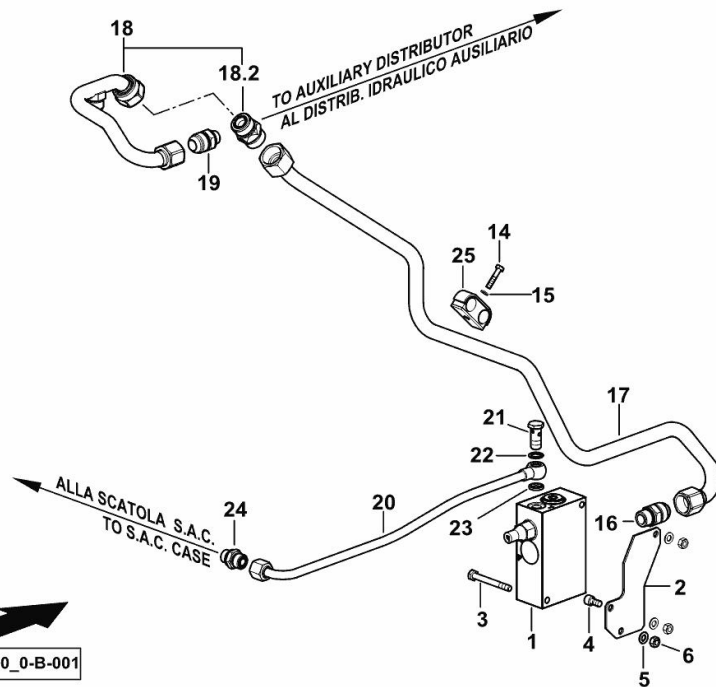
HYDRAULIC SYSTEM

Fig.	P/n	QTY	Name
------	-----	-----	------

Notes:

- 60 LT ECO [Nitro 120 T4i -> ZKDY7402W0TL10001]

1	04453271/10	1	valve
2	0.019.5991.0	1	bracket
3	2.0112.223.2	2	screw m 8 p.1.25x70
4	2.0312.204.2	1	screw m 8 p.1.25 x 16
5	2.1475.002.2	3	conical washer 8
6	2.1011.105.2	3	nut m 8 p.1.25
14	2.0112.011.2	2	screw m 6 p.1x30
15	2.1470.002.2	6	lock washer 6
16	2.3249.158.2	1	pipe fitting
17	0.019.5996.3	1	tube
18	0.019.5221.4	1	tube
18.2	2.3729.034.0	1	valve
19	2.3249.148.2	1	pipe fitting m 18 - 1/16" JIC
20	0.019.6240.3	1	tube
21	2.3335.053.2	1	pipe union m 14 p.1.5x32
22	2.1560.010.0	1	gasket 14.2 x 20
23	2.1569.171.0	1	gasket 14.2 x 20 x 3
24	2.3272.009.0	1	pipe fitting m 18/12
25	2.3320.221.0	1	terminal Ø 20/20



9_Y8452_20_0-B-001

Buy Now



Our support email:

ebooklibonline@outlook.com