

Section: ENGINE

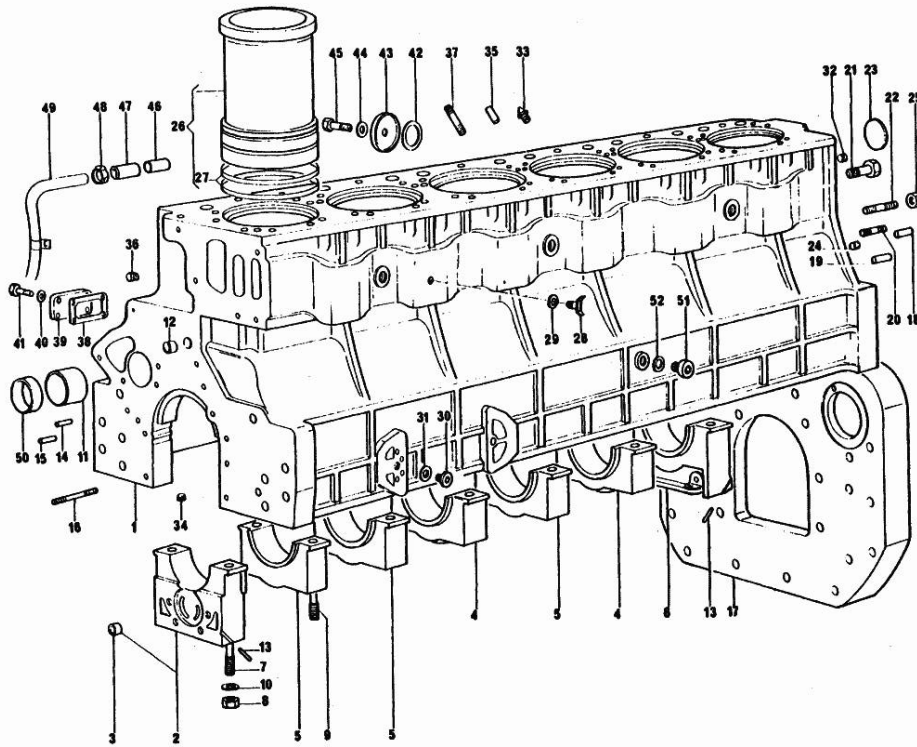
CRANKCASE

| Fig. | P/n | QTY | Name |
|------|-----|-----|------|
|------|-----|-----|------|

Notes:

[R 1556]

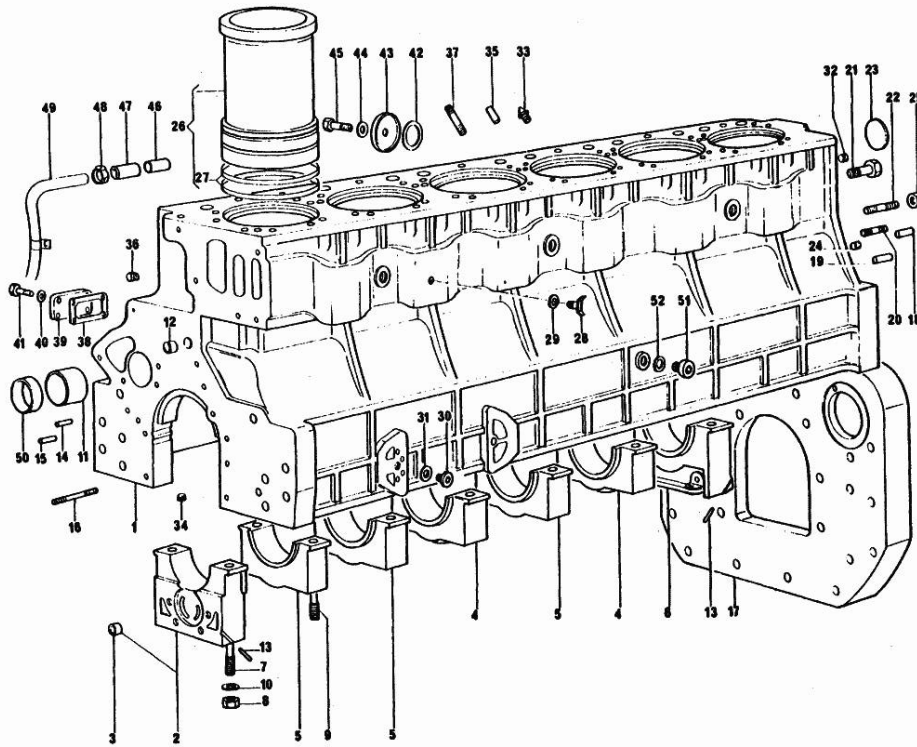
| | | | |
|----|-----------------|----|-------------------------------|
| 1 | 0.061.1110.4/20 | 1 | crankcase |
| 2 | 0.052.1112.3 | 1 | support |
| 3 | 2.1559.090.0/10 | 1 | bushing 14.24x19.06x27 |
| 4 | 0.052.1113.0 | 2 | support |
| 5 | 0.052.1113.0 | 3 | support |
| 6 | 0.052.1116.0 | 1 | support |
| 7 | 0.052.1151.0 | 4 | stud bolt |
| 8 | 2.1099.064.7 | 14 | special nut |
| 9 | 0.052.1150.0 | 10 | stud bolt |
| 10 | 2.1599.318.7 | 14 | flat washer |
| 11 | 2.1559.156.0 | 4 | special bushing |
| 12 | 2.1559.111.0 | 2 | bushing 12x14x10 |
| 13 | 0.029.1154.0 | 4 | gasket |
| 14 | 2.1699.114.0 | 1 | pin 8x55 |
| 15 | 2.1653.711.0 | 1 | pin |
| 16 | 2.0432.025.1 | 2 | stud bolt m 8 p 1.25-1x100 |
| 17 | 0.052.1155.0 | 1 | spacer |
| 18 | 2.1653.708.0 | 2 | pin 8x18 |
| 19 | 2.1652.911.0 | 2 | cylindrical plug 12x25 |
| 20 | 2.0432.153.2 | 2 | stud bolt |
| 21 | 2.0112.515.2 | 10 | screw m 14 p.2 x 40 |
| 22 | 2.0432.255.2 | 2 | stud bolt m 12 p.1.75-1.25x25 |
| 23 | 2.3170.023.1 | 1 | expansion plug 65 |
| 24 | 2.3130.003.1 | 2 | plug 3/8" gas |
| 25 | 2.1011.207.2 | 2 | nut m 12 p.1.5 |
| 26 | 0.057.1120.0 | 6 | engine cylinder |
| 27 | 2.1539.029.0 | 12 | special oil seal |
| 28 | 0.049.1152.0 | 1 | cock |
| 29 | 2.1560.009.0 | 1 | gasket 14.2x18 |
| 30 | 2.3120.001.4 | 1 | plug m 18 p.1.5 |
| 31 | 2.1560.014.0 | 1 | washer 18.2 x 24 |
| 32 | 2.3130.002.1 | 2 | plug 1/4" gas |
| 33 | 0.052.1152.3 | 6 | valve |
| 34 | 2.3130.001.1 | 6 | plug 1/8" gas |
| 35 | 2.1652.306.0 | 2 | cylindrical plug 4x14 |
| 36 | 2.3139.001.0 | 5 | plug m 12 p.1.75 |
| 37 | 2.0432.003.2 | 8 | stud bolt m 8 p.1x20 |
| 38 | 0.057.1153.0 | 2 | gasket |
| 39 | 0.057.1152.0 | 2 | cover |
| 40 | 2.1310.004.2 | 8 | flat washer 8.4x17 |
| 41 | 2.0112.205.2 | 8 | screw m 8 p.1.25 x 16 |



Section: ENGINE

CRANKCASE

| Fig. | P/n | QTY | Name |
|------|--------------|-----|------------------------|
| 42 | 0.057.1151.0 | 1 | gasket |
| 43 | 0.057.1150.0 | 1 | cover |
| 44 | 2.1560.003.0 | 1 | copper gasket 8.2 x 12 |
| 45 | 2.0112.204.2 | 1 | screw m 8 p.1.25x14 |
| 46 | 0.057.1154.0 | 1 | tube |
| 47 | 0.057.1158.0 | 1 | sleeve |
| 48 | 2.6850.007.0 | 2 | clamp 25-40 |
| 49 | 0.233.1150.2 | 1 | tube |
| 50 | 2.1559.157.0 | 1 | special bushing |
| 51 | 2.3120.003.0 | 1 | plug |
| 52 | 2.1560.021.0 | 1 | copper gasket 28.3x34 |



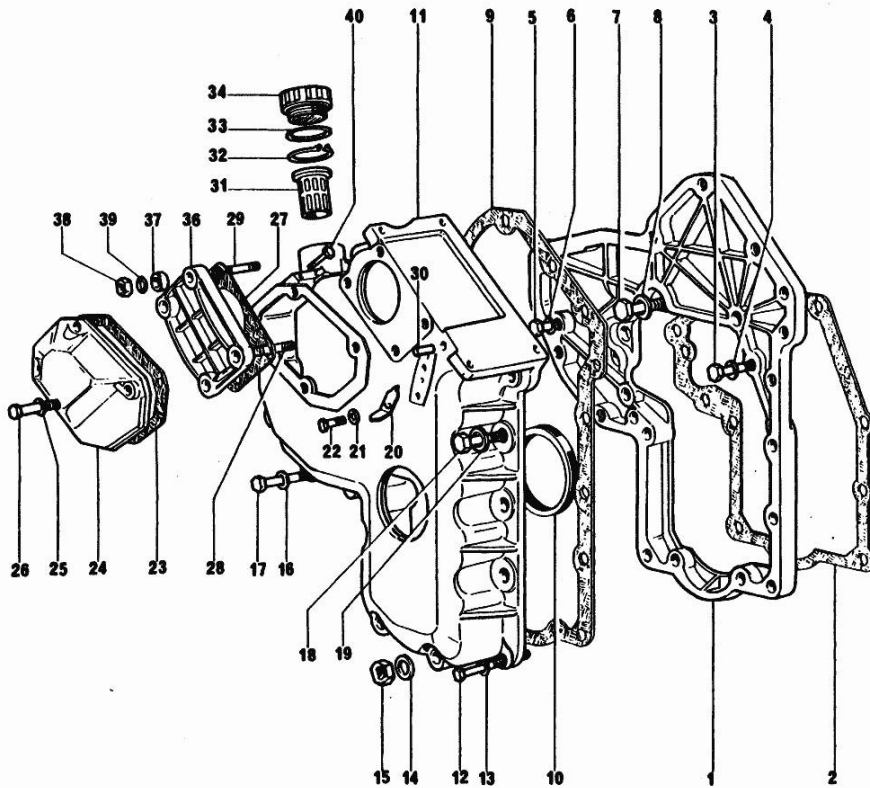
Section: ENGINE

TIMING CASE

| Fig. | P/n | QTY | Name |
|------|-----|-----|------|
|------|-----|-----|------|

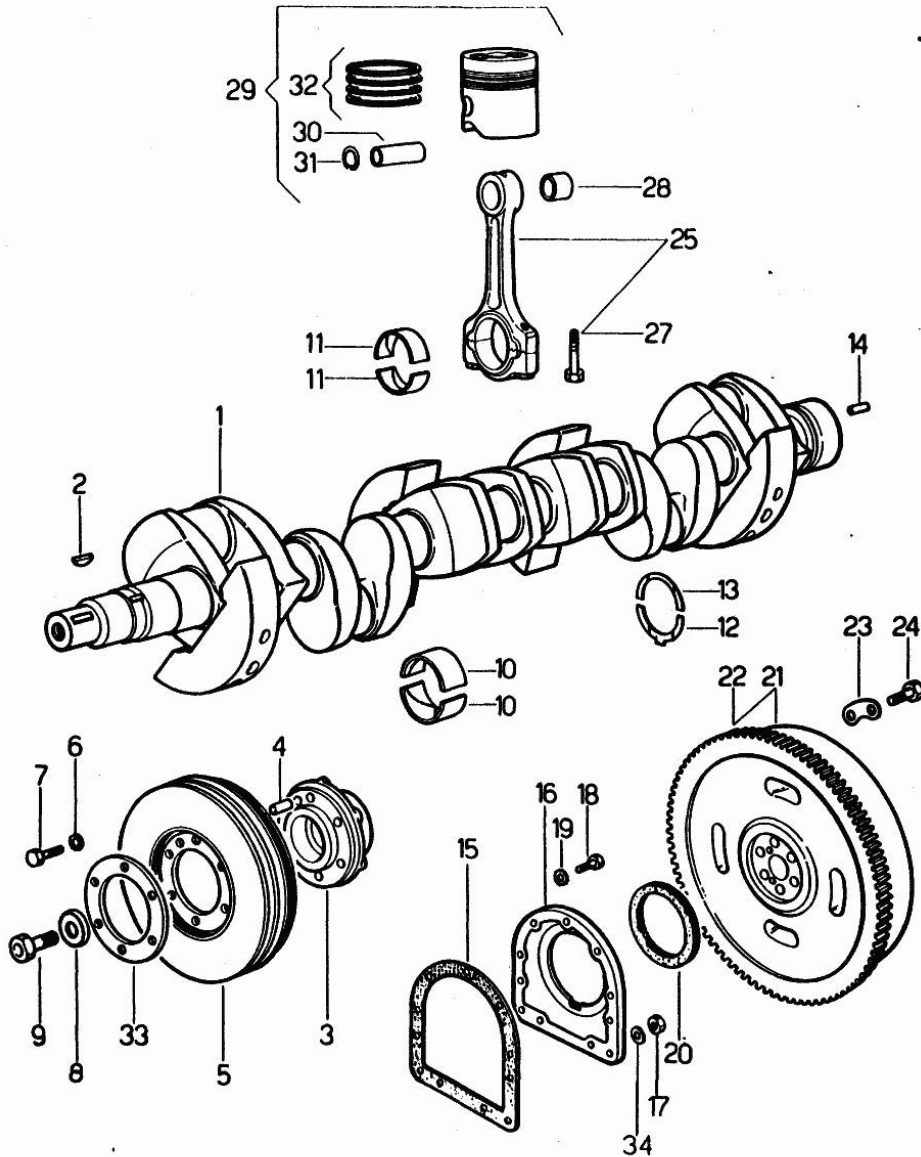
Notes:

[R 1556]



| | | | |
|----|-----------------|---|----------------------------|
| 1 | 0.048.1131.0 | 1 | flange |
| 2 | 0.057.1155.0 | 1 | gasket |
| 3 | 2.0112.209.2 | 4 | screw m 8 p 1.25 x 25 |
| 4 | 2.1480.014.1 | 4 | washer 8 |
| 5 | 2.0112.207.2 | 2 | screw m 8 p 1.25 x 20 |
| 6 | 2.1480.014.1 | 2 | washer 8 |
| 7 | 2.0112.211.2 | 1 | screw m 8 p.1.25 x 30 |
| 8 | 2.1480.014.1 | 1 | washer 8 |
| 9 | 0.041.1152.0 | 1 | gasket |
| 10 | 2.1519.010.0 | 1 | special oil seal 58x80x10 |
| 11 | 0.048.1132.0/30 | 1 | guard |
| 12 | 2.0112.217.2 | 5 | screw m 8 p.1.25 x 45 |
| 13 | 2.1480.014.1 | 5 | washer 8 |
| 14 | 2.1560.003.0 | 2 | copper gasket 8.2 x 12 |
| 15 | 2.1011.405.2 | 2 | nut m 8 p.1 |
| 17 | 2.0112.211.2 | 3 | screw m 8 p.1.25 x 30 |
| 18 | 2.0112.222.2 | 4 | screw m 8 p.1.25x65 |
| 19 | 2.1480.014.1 | 4 | washer 8 |
| 20 | 0.057.1156.0 | 1 | index |
| 21 | 2.1310.004.2 | 1 | flat washer 8.4x17 |
| 22 | 2.0112.204.2 | 1 | screw m 8 p.1.25x14 |
| 23 | 0.048.1151.0/10 | 1 | gasket |
| 24 | 0.048.1150.0/20 | 1 | cover |
| 25 | 2.1560.005.0 | 4 | copper gasket 10.2 x 14 |
| 26 | 2.0112.315.2 | 4 | screw m 10 p.1.5 x 40 |
| 27 | 0.041.1154.0 | 1 | gasket |
| 28 | 2.0432.013.2 | 1 | stud bolt |
| 29 | 2.0432.028.1 | 3 | stud bolt m 8 p.1.25-1x130 |
| 30 | 2.1653.717.0 | 1 | pin 8 x 40 |
| 31 | 0.041.1159.0/10 | 1 | filter |
| 32 | 2.1411.012.1 | 1 | circlip 30 |
| 33 | 2.1569.072.0 | 1 | gasket 32 x 39.5 x 2 |
| 34 | 0.041.1135.0 | 1 | plug |
| 36 | 0.037.1151.0 | 1 | cover |
| 37 | 2.1579.191.0 | 4 | spacer 8.5 x 18 x 20 |
| 38 | 2.1011.405.2 | 4 | nut m 8 p.1 |
| 39 | 2.1310.004.2 | 4 | flat washer 8.4x17 |
| 40 | 2.0119.081.2 | 2 | screw |

Section: ENGINE
CRANKSHAFT

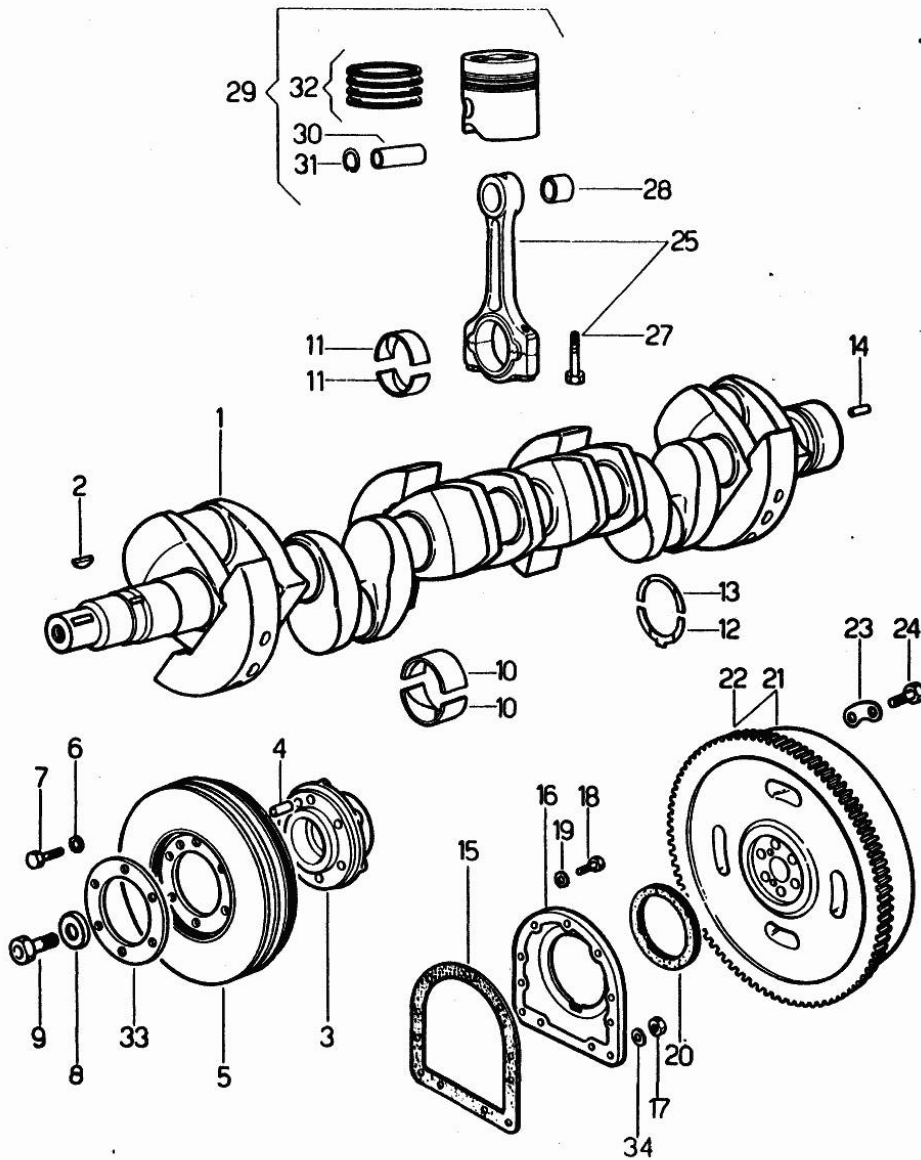


Notes:
[R 1556]

| Fig. | P/n | QTY | Name |
|------|-----------------|-----|--------------------------------|
| 0 | 0.057.0052.6 | 1 | gasket set |
| 0 | 0.057.0053.6 | 1 | gasket set |
| 1 | 0.037.1210.4/20 | 1 | crankshaft |
| 2 | 2.1799.002.0 | 2 | stick 10x13 |
| 3 | 0.037.1250.0/10 | 1 | hub |
| 4 | 2.1651.909.0 | 1 | cylindrical plug 12 x 20 |
| 5 | 0.047.1246.3 | 1 | antivibration pulley |
| 6 | 2.1470.007.2 | 6 | lock washer 12 |
| 7 | 2.0122.461.2 | 6 | screw m 12 p.1.25x30 |
| 8 | 0.001.6020.0 | 1 | shoulder |
| 9 | 2.0129.032.2 | 1 | screw m 24 p.2x45 |
| 10 | 0.029.0066.0 | 14 | main half bushing - mm 1.00 |
| 10 | 0.029.1215.0/10 | 14 | main half bushing |
| 10 | 0.029.1215.7 | 14 | main half bushing - mm 0.25 |
| 10 | 0.029.1215.8 | 14 | main half bushing - mm 0.50 |
| 10 | 0.029.1215.9 | 14 | main half bushing - mm 0.75 |
| 11 | 0.052.1225.0 | 12 | con.rod half bushing |
| 11 | 0.052.1225.7 | 12 | con.rod half bushing - mm 0.25 |
| 11 | 0.052.1225.8 | 12 | con.rod half bushing - mm 0.50 |
| 11 | 0.052.1225.9 | 12 | con.rod half bushing - mm 0.75 |
| 12 | 0.001.4547.0 | 2 | shoulder ring + mm 0.05 |
| 12 | 0.001.4548.0 | 2 | shoulder ring + mm 0.10 |
| 12 | 0.001.4549.0 | 2 | shoulder ring + mm 0.15 |
| 12 | 0.042.1219.0 | 2 | shoulder ring STANDARD |
| 13 | 0.001.4544.0 | 2 | shoulder ring + mm 0.05 |
| 13 | 0.001.4545.0 | 2 | shoulder ring + mm 0.10 |
| 13 | 0.001.4546.0 | 2 | shoulder ring + mm 0.15 |
| 13 | 0.042.1218.0 | 2 | shoulder ring STANDARD |
| 14 | 2.1652.915.0 | 2 | cylindrical plug 12x35 |
| 15 | 0.029.1250.0 | 1 | gasket |
| 16 | 0.029.1240.0 | 1 | flange |
| 17 | 2.1011.421.2 | 2 | nut m 10 p.1.25 |
| 18 | 2.0112.309.2 | 7 | screw m 10 p.1.5 x 25 |
| 19 | 2.1480.015.1 | 7 | washer 10 |
| 20 | 2.1519.009.0 | 1 | special oil seal |
| 21 | 0.046.1253.3/10 | 1 | flywheel |
| 22 | 0.047.1242.0 | 1 | crown wheel z=128 |
| 23 | 2.1379.006.0 | 3 | lock-tab 15x15x36,5 |
| 24 | 2.0122.517.2 | 6 | screw m 14 p.1.5x45 |
| 25 | 0.057.1253.3 | 6 | - |
| 27 | 0.039.1250.0 | 12 | screw m 14 p.1.5x63 |

Section: ENGINE
CRANKSHAFT

| Fig. | P/n | QTY | Name |
|------|-----------------|-----|--------------------------|
| 28 | 2.1559.144.0/10 | 6 | special bushing |
| 29 | 0.064.0060.6 | 6 | complete piston STANDARD |
| 30 | 0.054.1236.0 | 6 | piston pin |
| 31 | 2.1411.014.1 | 12 | circlip 35 |
| 32 | 0.057.0051.6 | 6 | piston ring set |
| 33 | 0.037.1255.0 | 1 | flange |
| 34 | 2.1560.006.0 | 2 | gasket 10.2 x 16 |

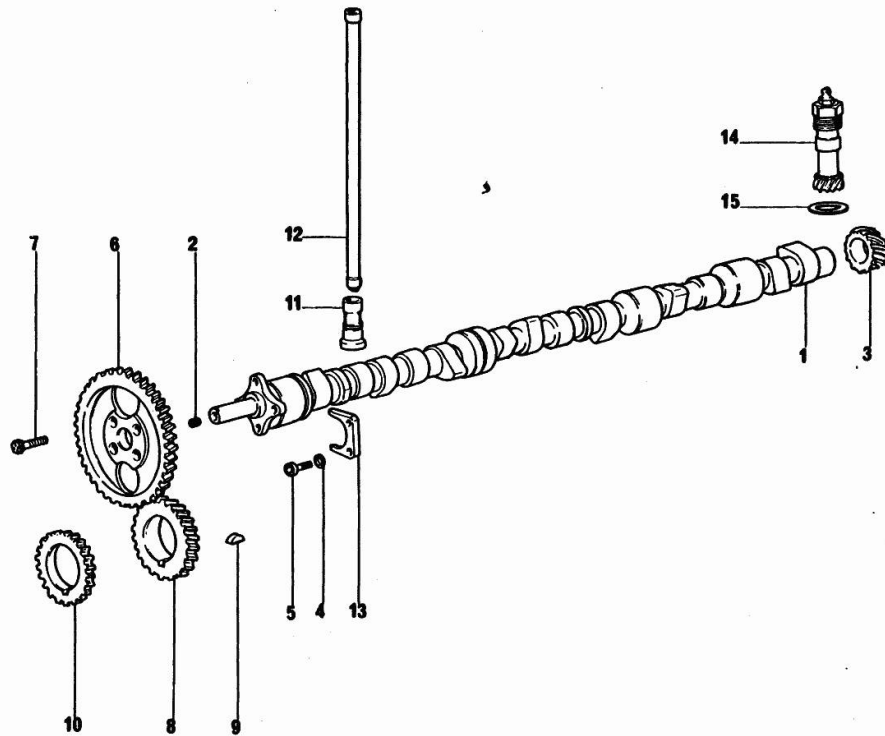


CAMSHAFT

| Fig. | P/n | QTY | Name |
|------|-----|-----|------|
|------|-----|-----|------|

Notes:
[R 1556]

| | | | |
|----|-----------------|----|-----------------------|
| 1 | 0.057.1310.3 | 1 | camshaft |
| 2 | 2.3130.001.1 | 1 | plug 1/8" gas |
| 3 | 0.041.1350.0 | 1 | gear |
| 4 | 2.1470.004.2 | 2 | lock washer 8 |
| 5 | 2.0312.206.2 | 2 | screw m 8 p 1.25 x 20 |
| 6 | 0.041.1321.0 | 1 | gear z = 66 |
| 7 | 2.0139.005.1 | 4 | screw m 10 p.1 x 25 |
| 8 | 0.040.1320.0 | 1 | gear z = 33 |
| 9 | 2.1720.010.0 | 1 | key 5x9 |
| 10 | 0.040.1323.0/11 | 1 | - |
| 10 | 2.1720.010.0 | 1 | key 5x9 |
| 11 | 0.057.1330.0 | 12 | tappets |
| 12 | 0.057.1331.2 | 12 | rod |
| 13 | 0.027.1314.0 | 1 | flange |
| 14 | 0.041.1355.3 | 1 | transmission |
| 15 | 2.1560.013.0 | 1 | gasket 18.2x22 |

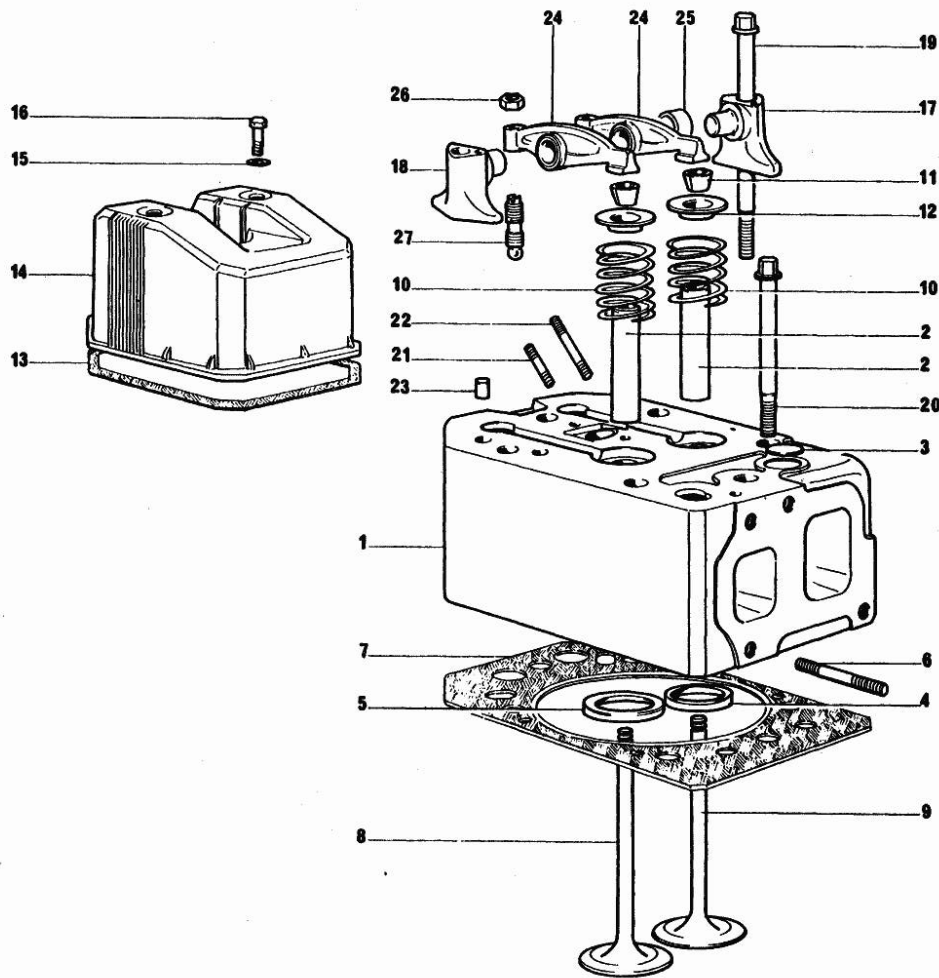


Section: ENGINE
CYLINDER HEAD

| Fig. | P/n | QTY | Name |
|------|-----|-----|------|
|------|-----|-----|------|

Notes:
[R 1556]

| | | | |
|----|-----------------|----|---------------------------------|
| 0 | 0.057.0052.6 | 6 | gasket set |
| 1 | 0.057.1410.3/21 | 6 | - |
| 2 | 0.057.1416.0 | 12 | valve guide |
| 3 | 2.3170.010.1 | 6 | expansion plug 25 |
| 4 | 0.057.1450.0 | 6 | valve seat |
| 5 | 0.057.1451.0 | 6 | valve seat |
| 6 | 2.0432.009.2 | 12 | stud bolt m 8 p.1x35 |
| 7 | 0.057.1456.0 | 6 | head gasket |
| 8 | 0.058.1421.0/12 | 6 | - |
| 9 | 0.058.1420.0/12 | 6 | - |
| 10 | 2.4019.228.0 | 12 | spring |
| 11 | 0.058.1423.0 | 12 | cone |
| 12 | 0.058.1425.0 | 12 | cup |
| 13 | 0.057.1457.0 | 6 | gasket |
| 14 | 0.057.1440.0 | 6 | small cap |
| 15 | 2.1560.004.0 | 12 | copper gasket 8.2 x 14 |
| 16 | 2.0112.217.2 | 12 | screw m 8 p.1.25 x 45 |
| 17 | 0.057.1430.0 | 6 | support |
| 18 | 0.057.1453.0 | 6 | support |
| 19 | 0.057.1454.0 | 12 | screw |
| 20 | 0.057.1455.0 | 24 | screw |
| 21 | 2.0432.007.2 | 6 | stud bolt m 8 p.1.25 / p.1 x 30 |
| 22 | 2.0432.011.1 | 6 | stud bolt m 8 p.1.25 / p.1 x 40 |
| 23 | 2.1652.708.0 | 24 | cylindrical plug 8x18 |
| 24 | 0.057.1432.3 | 12 | rocker arm |
| 25 | 2.1559.141.0 | 12 | special bushing |
| 26 | 2.1011.405.2 | 12 | nut m 8 p.1 |
| 27 | 0.021.1434.0 | 12 | screw |



Buy Now



Our support email:

ebooklibonline@outlook.com