

Section: ENGINE  
CRANKCASE

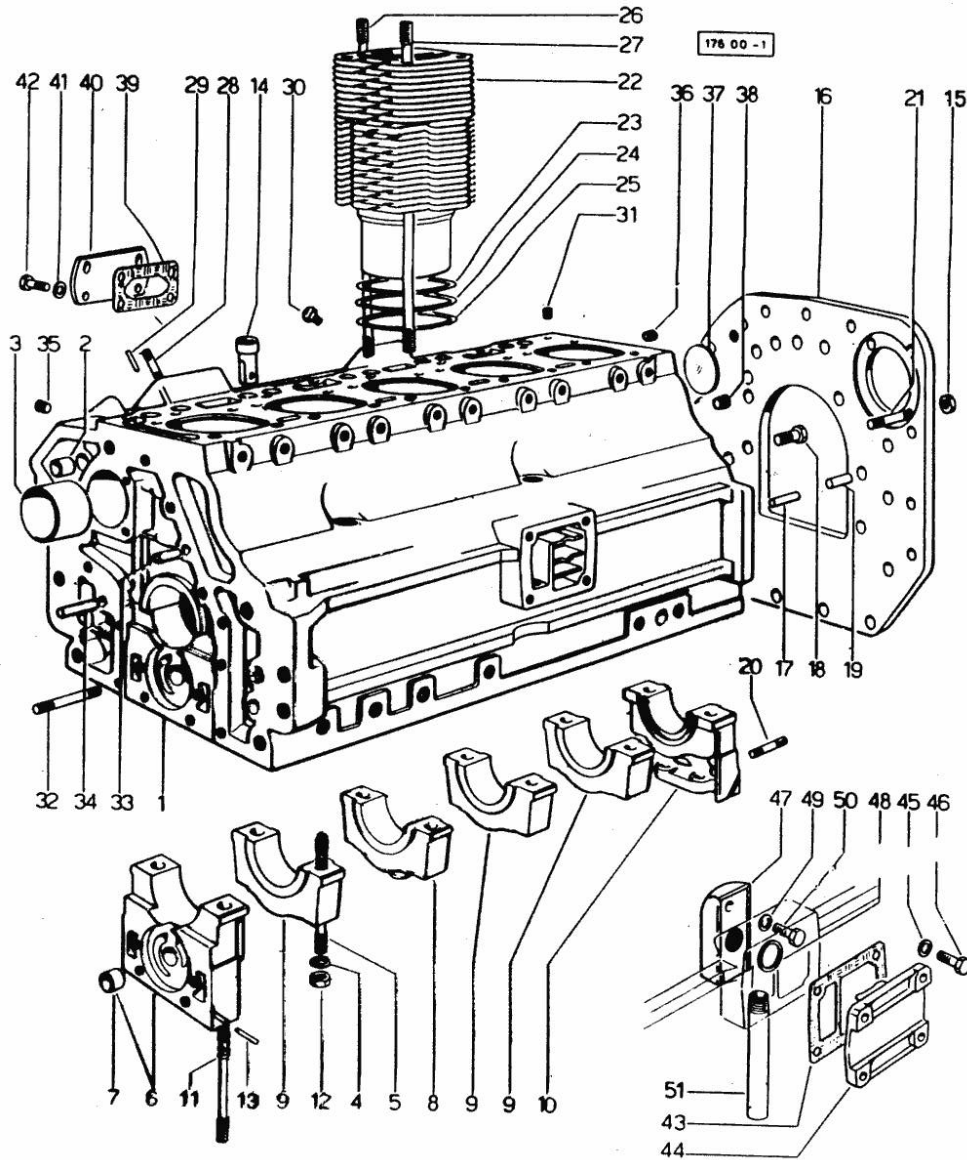


Fig.	P/n	QTY	Name
------	-----	-----	------

Notes:  
[R 955]

0	0.042.0050.6	1	gasket set
1	0.048.1110.4/60	1	crankcase
2	2.1559.111.0/10	2	special bushing 11.5x14.1x10
3	0.037.1155.0	1	bushing
4	2.1599.144.7	12	shoulder ring 12.5x23x4
5	0.029.1117.0	8	stud bolt
6	0.004.8774.3	1	support
7	2.1559.090.0/10	1	bushing 14.24x19.06x27
8	0.037.1114.0	2	support
9	0.029.1113.0	2	support
10	0.029.1116.0	1	support
11	0.021.1157.0	4	stud bolt
12	2.1019.026.1	12	special nut m 12 p.1.5
13	0.029.1154.0	4	gasket
14	0.044.1156.0	12	special bushing
15	2.1011.209.2	2	nut m 16 p.2
16	0.045.1152.0/10	1	plate
17	2.1653.708.0	2	pin 8x18
18	2.0112.513.2	11	screw m 14 p.2 x 35
19	2.1652.911.0	2	cylindrical plug 12x25
20	2.0432.153.2	2	stud bolt
21	2.0432.255.2	2	stud bolt m 12 p.1.75-1.25x25
22	0.044.1120.0/10	5	engine cylinder
23	2.1589.052.0	10	shoulder ring 115x123x0.2
24	2.1589.051.0	5	shoulder ring 116x123x0.1
25	2.1569.076.0	5	gasket 116x123x0.5
26	0.041.1123.0/10	5	stud bolt
27	0.039.1122.0	20	stud bolt m 12 p.1.5x310
28	2.0432.003.1	8	stud bolt m 8 p.1.25 / p.1 x 20
29	2.1653.306.0	2	pin
30	0.071.1151.3	5	valve
31	2.3130.001.1	4	plug 1/8" gas
32	2.0432.025.1	2	stud bolt m 8 p 1.25-1x100
33	2.1653.711.0	1	pin
34	2.1699.114.0	1	pin 8x55
35	2.3139.001.0	5	plug m 12 p.1.75
36	2.3130.002.1	1	plug 1/4" gas
37	2.3170.022.1	1	expansion plug 60
38	2.3130.003.1	2	plug 3/8" gas
39	0.044.1151.0	2	gasket
40	0.044.1150.0	2	cover

Section: ENGINE  
**CRANKCASE**

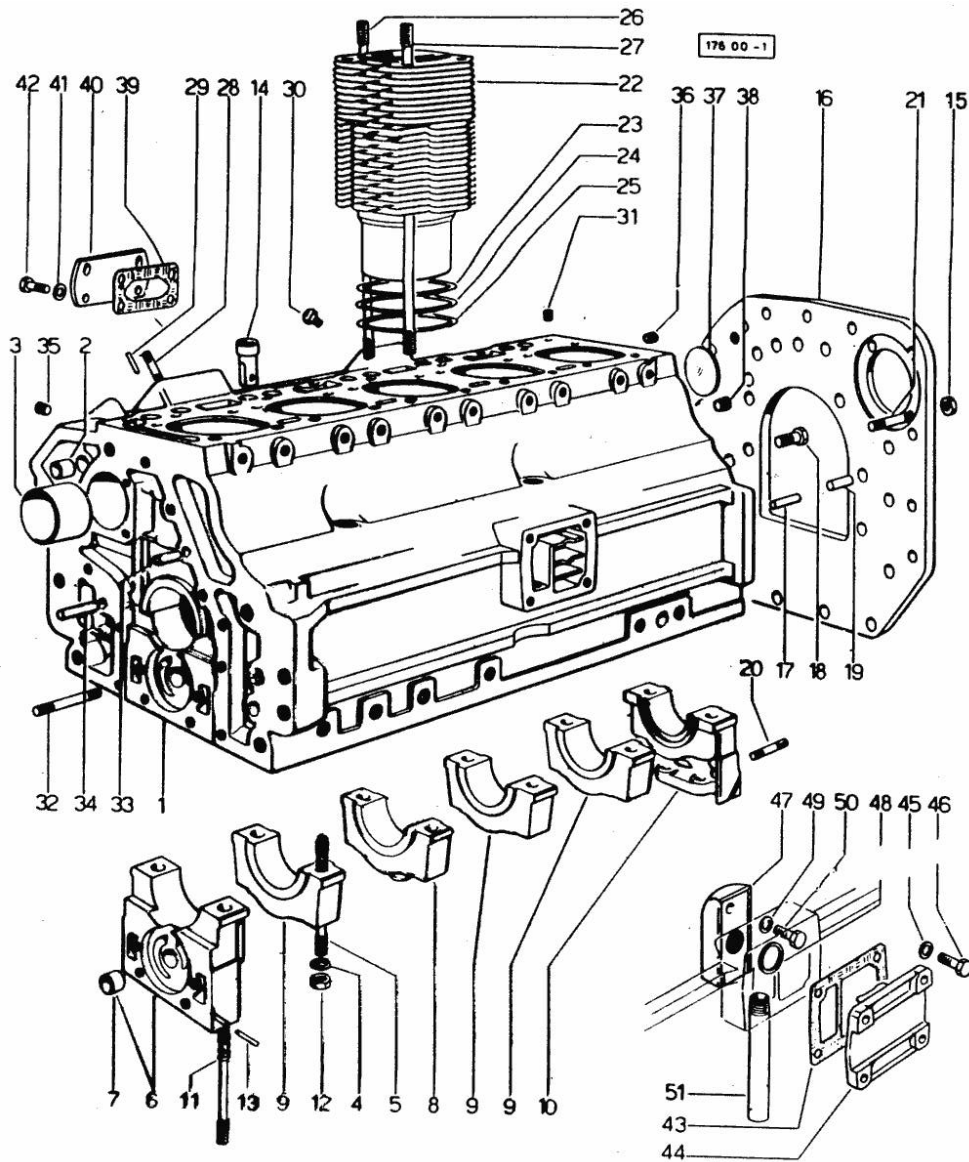


Fig.	P/n	QTY	Name
41	2.1310.004.2	8	flat washer 8.4x17
42	2.0112.204.2	8	screw m 8 p.1.25x14
43	0.044.1153.0/10	1	gasket
44	0.044.1154.0	1	cover
45	2.1480.014.1	4	washer 8
46	2.0112.209.2	4	screw m 8 p 1.25 x 25
47	0.044.1155.2/20	1	cover
48	0.045.1150.0	1	oil seal
49	2.1480.014.1	1	washer 8
50	2.0312.206.2	1	screw m 8 p 1.25 x 20
51	0.044.1152.0	1	tube

## Section: ENGINE

## TIMING CASE

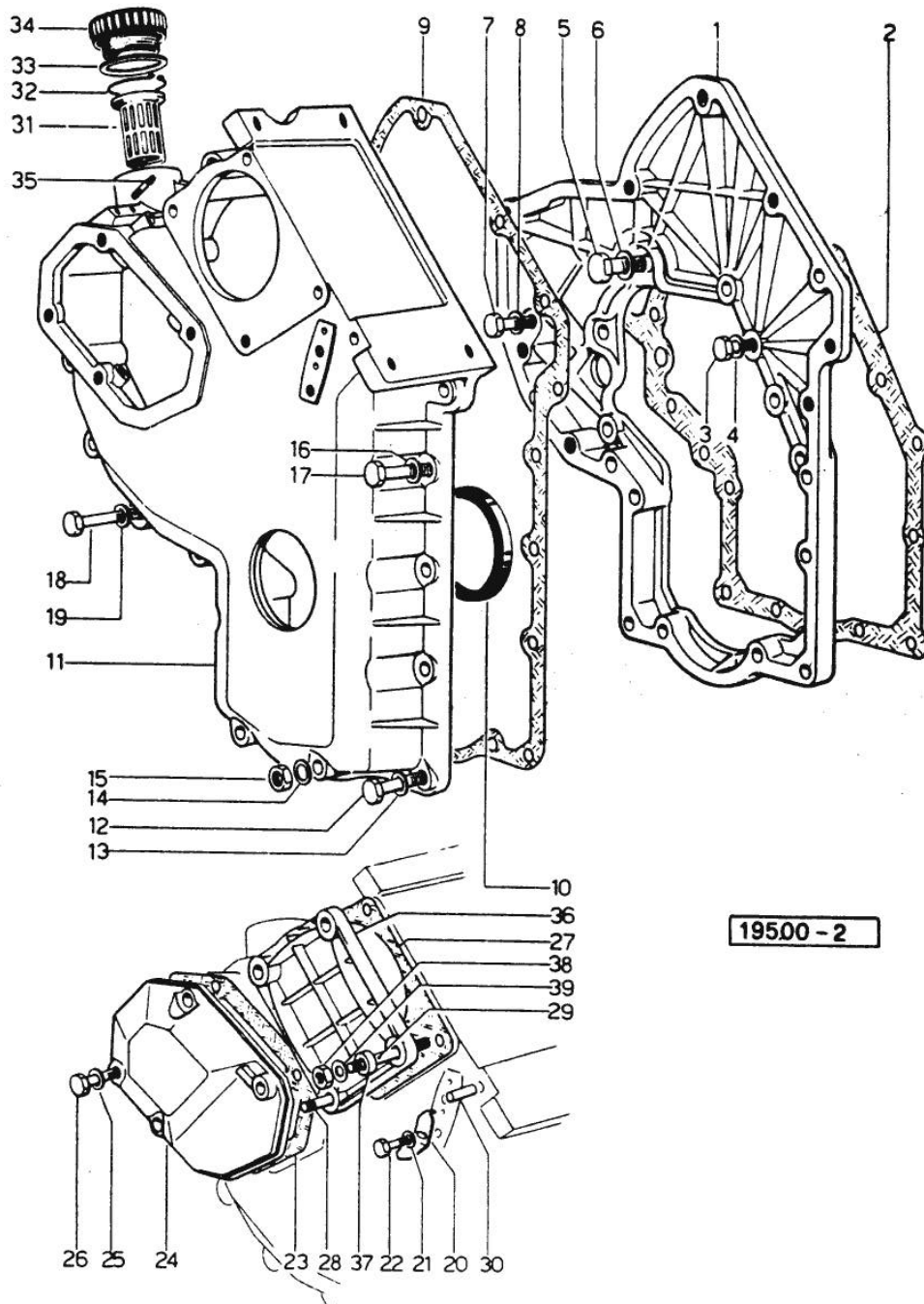


Fig.	P/n	QTY	Name
<b>Notes:</b>			
[R 955]			
1	0.079.1131.0	1	flange
2	0.041.1153.0	1	gasket
3	2.0112.209.2	5	screw m 8 p 1.25 x 25
4	2.1480.014.1	5	washer 8
5	2.0119.034.1	1	screw m 14 p.2x20
6	2.1560.010.0	1	gasket 14.2 x 20
7	2.0112.207.2	1	screw m 8 p 1.25 x 20
8	2.1480.014.1	1	washer 8
9	0.041.1152.0	1	gasket
10	2.1519.010.0	1	special oil seal 58x80x10
11	0.048.1132.0/10	1	guard
11	0.048.1132.0/40	1	guard (...) <- > (...)
12	2.0112.217.2	5	screw m 8 p.1.25 x 45
13	2.1480.014.1	5	washer 8
14	2.1560.003.0	2	copper gasket 8.2 x 12
15	2.1011.405.2	2	nut m 8 p.1
16	2.1480.014.1	2	washer 8
17	2.0112.211.2	2	screw m 8 p.1.25 x 30
18	2.0112.222.2	4	screw m 8 p.1.25x65
19	2.1480.014.1	4	washer 8
20	0.041.1158.0	1	index
21	2.1310.004.2	1	flat washer 8.4x17
22	2.0112.204.2	1	screw m 8 p.1.25x14
23	0.048.1151.0/10	1	gasket
24	0.048.1150.0/20	1	cover
25	2.1560.005.0	4	copper gasket 10.2 x 14
26	2.0112.313.2	1	screw m 10 p.1.5 x 35
26	2.0112.315.2	3	screw m 10 p.1.5 x 40
27	0.041.1154.0	1	gasket
28	2.0432.015.2	1	stud bolt m 8 p.1.25-1x50
29	2.0432.028.1	3	stud bolt m 8 p.1.25-1x130
30	2.1653.717.0	1	pin 8 x 40
31	0.041.1159.0/10	1	filter
32	2.1411.012.1	1	circlip 30
33	2.1569.072.0	1	gasket 32 x 39.5 x 2
34	0.041.1135.4	1	plug 1" gas
35	2.0112.002.2	2	screw m 6 p.1 x 10
36	0.037.1151.0	1	cover
37	2.1579.191.0	4	spacer 8.5 x 18 x 20

Section: ENGINE  
TIMING CASE

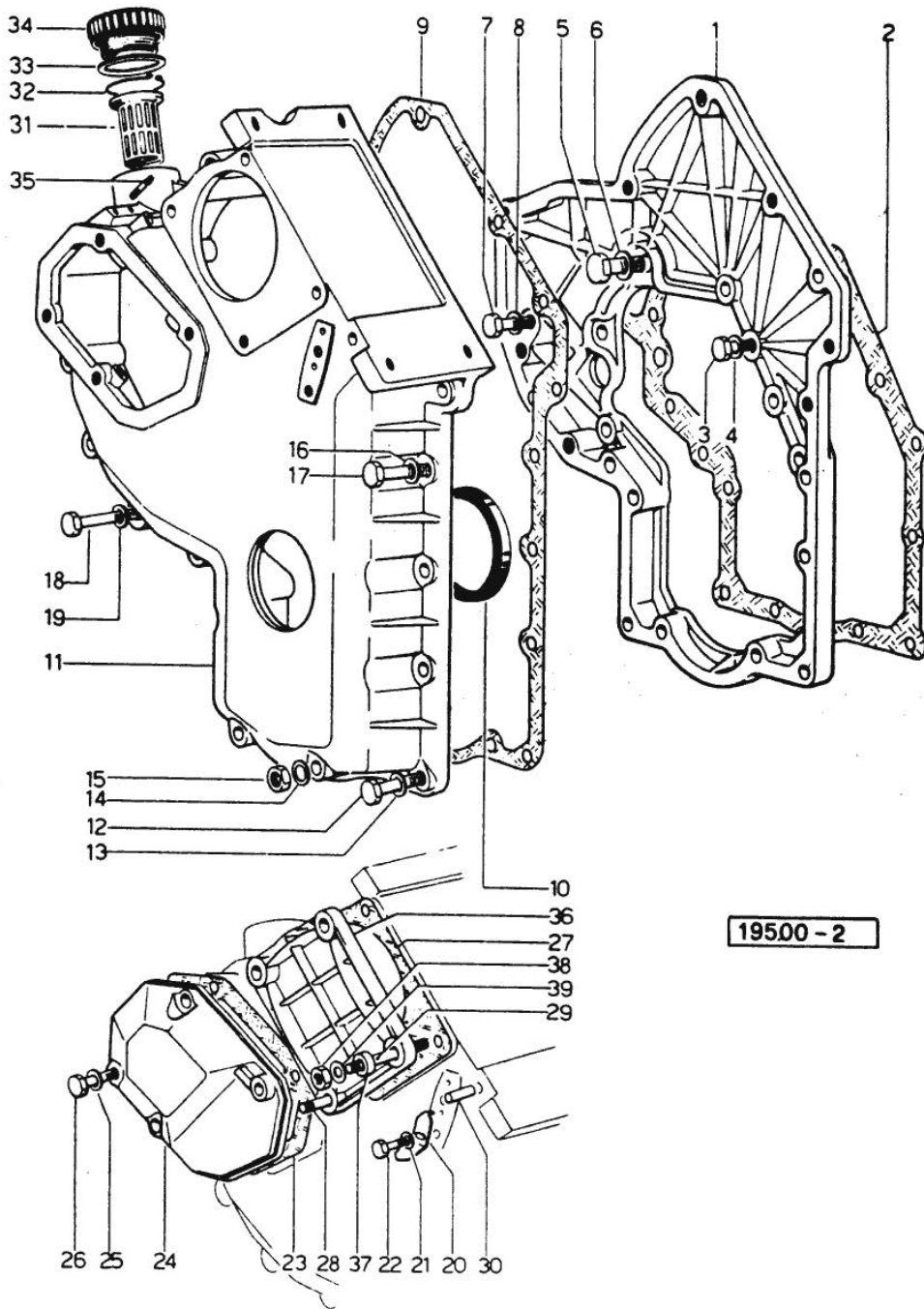


Fig.	P/n	QTY	Name
38	2.1011.505.2	4	nut m 8 p.1
39	2.1310.004.2	4	flat washer 8.4x17

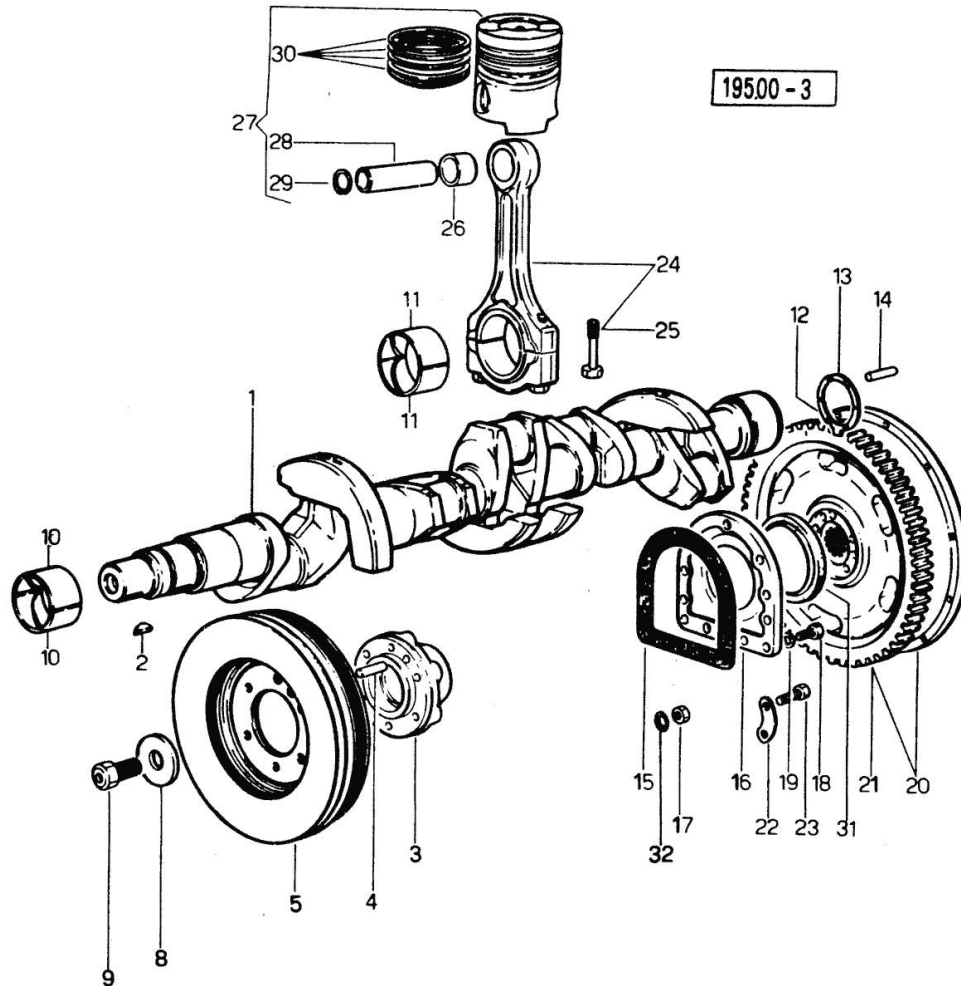
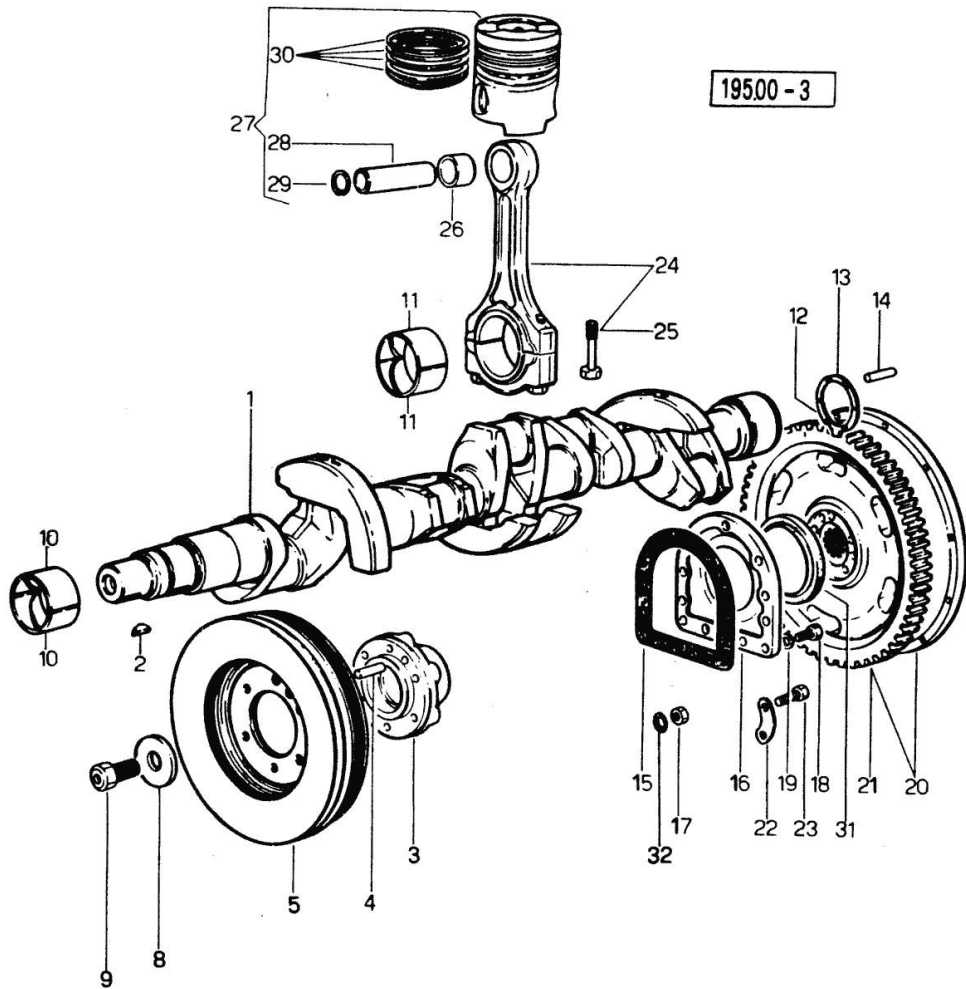
Section: ENGINE  
CRANKSHAFT

Fig.	P/n	QTY	Name
<b>Notes:</b>			
[R 955]			
1	0.041.1210.4/20	1	crankshaft
2	2.1799.002.0	1	stick 10x13
			(...) <-
2	2.1799.026.0	1	key 10x10
			-> (...)
3	0.037.1250.0/10	1	hub
4	2.1651.909.0	1	cylindrical plug 12 x 20
5	0.042.1250.3/10	1	flywheel
8	0.001.6020.0	1	shoulder
9	2.0129.032.2	1	screw m 24 p.2x45
10	0.029.0066.0	12	main half bushing - mm 1.00
10	0.029.1215.7	12	main half bushing - mm 0.25
10	0.029.1215.8	12	main half bushing - mm 0.50
10	0.029.1215.9	12	main half bushing - mm 0.75
10	0.073.1215.0	12	main half bushing STANDARD
11	0.039.0068.0	10	con.rod half bushing - mm 1.016
11	0.052.1225.0	10	con.rod half bushing
11	0.052.1225.7	10	con.rod half bushing - mm 0.25
11	0.052.1225.8	10	con.rod half bushing - mm 0.50
11	0.052.1225.9	10	con.rod half bushing - mm 0.75
12	0.001.4547.0	2	shoulder ring + mm 0.05
12	0.001.4548.0	2	shoulder ring + mm 0.10
12	0.001.4549.0	2	shoulder ring + mm 0.15
12	0.042.1218.0	2	shoulder ring STANDARD
13	0.001.4544.0	2	shoulder ring + mm 0.05
13	0.001.4545.0	2	shoulder ring + mm 0.10
13	0.001.4546.0	2	shoulder ring + mm 0.15
13	0.042.1219.0	2	shoulder ring STANDARD
14	2.1652.915.0	2	cylindrical plug 12x35
15	0.029.1250.0	1	gasket
16	0.029.1240.0	1	flange
17	2.1011.421.2	2	nut m 10 p.1.25
18	2.0112.309.2	7	screw m 10 p.1.5 x 25
19	2.1480.015.1	7	washer 10
20	0.042.1251.3/10	1	flywheel
21	0.036.1242.0	1	crown wheel Z = 126, mm 15
22	2.1379.006.0	3	lock-tab 15x15x36,5
23	2.0122.517.2	6	screw m 14 p.1.5x45
24	0.052.1220.3/10	5	engine connecting rod
25	0.039.1250.0	10	screw m 14 p.1.5x63
26	0.002.4168.0	5	bearing

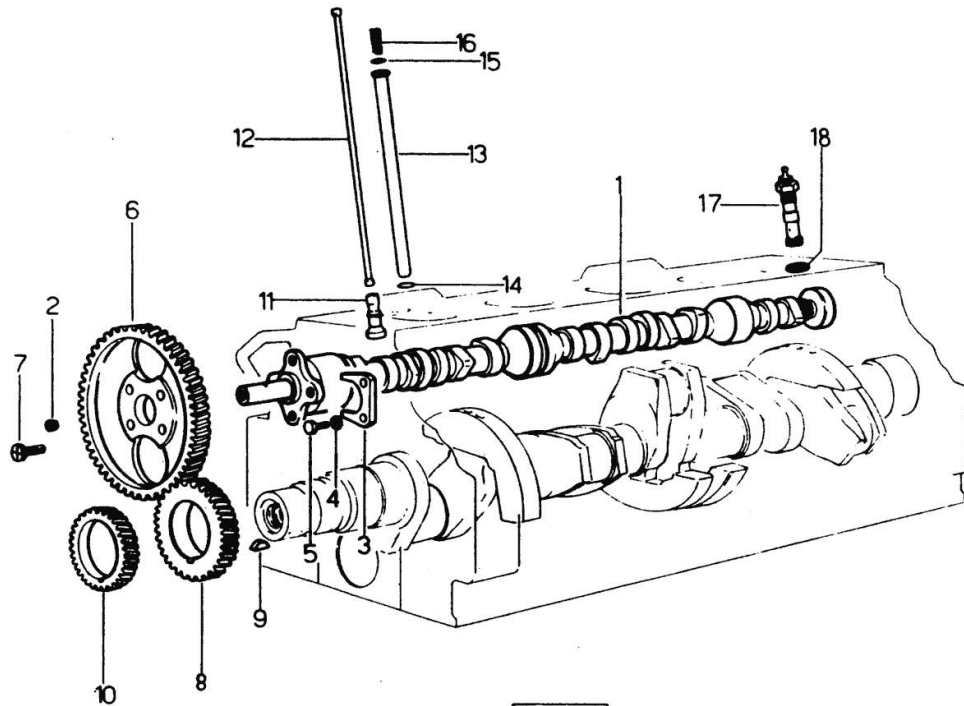
Section: ENGINE  
**CRANKSHAFT**

Fig.	P/n	QTY	Name
27	0.073.0060.6	5	complete piston STANDARD
27	0.073.0061.6	5	complete piston + mm 0.50
27	0.073.0062.6	5	complete piston + mm 1.0
28	0.038.1236.0	5	piston pin
29	2.1411.014.1	10	circlip 35
30	0.073.0052.6	1	piston ring set
30	0.073.0053.6	1	piston ring set + mm 0.5
30	0.073.0054.6	1	piston ring set + mm 1.0
31	2.1519.009.0	1	special oil seal
32	2.1560.006.0	2	gasket 10.2 x 16



Section: ENGINE

**CAMSHAFT**



170.00 - 4

Fig.	P/n	QTY	Name
------	-----	-----	------

Notes:

[R 955]

1	0.048.1310.0/20	1	camshaft
2	2.3130.001.1	1	plug 1/8" gas
3	0.027.1314.0	1	flange
4	2.1470.004.2	2	lock washer 8
5	2.0312.206.2	2	screw m 8 p 1.25 x 20
6	0.062.1321.0	1	gear z=66
7	2.0139.005.1	4	screw m 10 p.1 x 25
8	0.040.1320.0	1	gear z = 33
9	2.1720.010.0	1	key 5x9
10	0.040.1323.0/10	1	gear Z = 38
11	0.052.1330.0/20	10	tappets
12	0.041.1331.3	10	rod
13	0.041.1332.0	10	sleeve
14	2.1539.020.0	10	special oil seal 13.95x2.62
15	2.1539.022.0	10	special oil seal 12.37x2.62
16	2.4019.162.1/20	10	spring 17.2x46x1.8
17	0.041.1355.3	1	transmission
18	2.1560.013.0	1	gasket 18.2x22

**Buy Now**



Our support email:

[ebooklibonline@outlook.com](mailto:ebooklibonline@outlook.com)