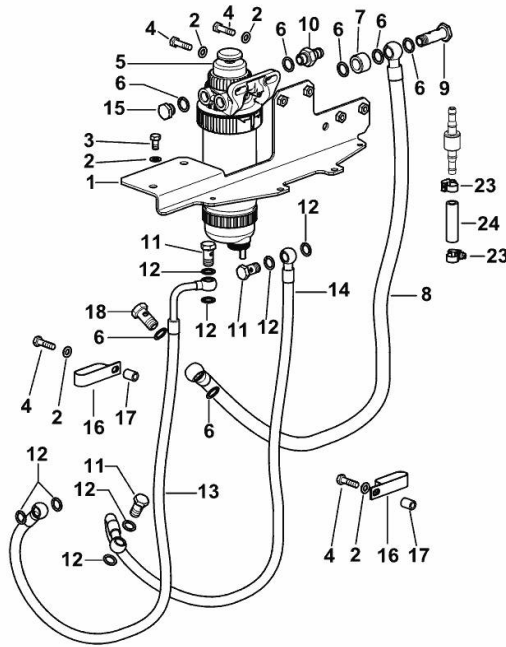


FUEL FILTER SUPPLY

Fig.	P/n	QTY	Name
------	-----	-----	------

Notes:
[R3 EVO 100]

1	0.014.8692.3/20	1	bracket
2	2.1310.004.2	8	flat washer 8.4x17
3	2.0112.205.2	2	screw m 8 p.1.25 x 16
4	2.0112.211.2	6	screw m 8 p.1.25 x 30
5	2.4319.290.0/10	1	precleaner ☞ 2.4319.290.0/10
6	2.1560.012.0	8	gasket 16.2 x 22
7	2.1549.335.2	1	spacer 26.9x5x18
8	0.014.8614.3	1	tube
9	2.3339.597.2/10	1	pipe union m 16 p.1.5x50
10	2.3339.322.2	1	pipe union
11	2.3332.004.2	3	pipe union m 14 p.1.5 x 27
12	2.1560.010.0	8	gasket 14.2 x 20
13	0.014.8616.3/10	1	tube
14	0.014.8615.3	1	tube
15	2.3110.404.2	2	plug m 16 p.1.5
16	0.011.0332.0	2	clamp
17	2.1579.212.0	2	spacer 8.3 x 13.5 x 18
18	2.3332.005.2	1	pipe fitting m 16 p.1.5
23	2.6851.019.0	2	clamp Ø 13/20
24	0.012.6449.0	1	tube



9_N9116_01_0-A-001

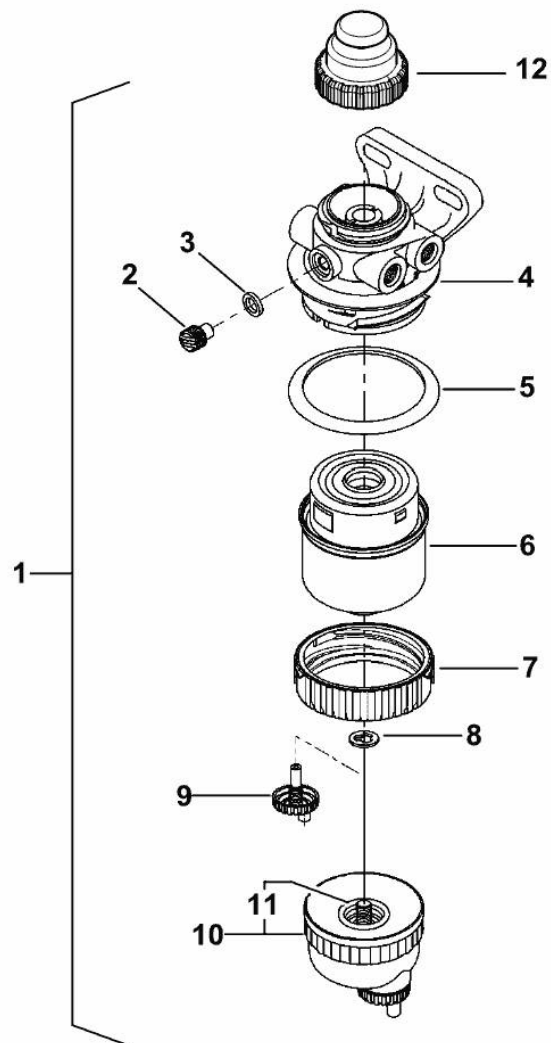
PRE-FILTER - COMPONENTS

Fig.	P/n	QTY	Name
1	2.4319.290.0/10	1	precleaner
2	0.900.0789.7	1	valve
3	0.900.0789.8	1	ring
4	0.000.0000.1	1	cannot be supplied
5	0.900.0789.9	1	oil seal
6	0.900.0456.2	1	fuel filter element
7	0.900.0790.0	1	ring
8	0.900.0790.1	1	gasket
9	0.900.0790.2	1	valve
10	0.900.0790.4	1	small tank
11	0.900.0790.3	1	gasket
12	0.900.1450.6	1	small pump

2_4319_290_0_10

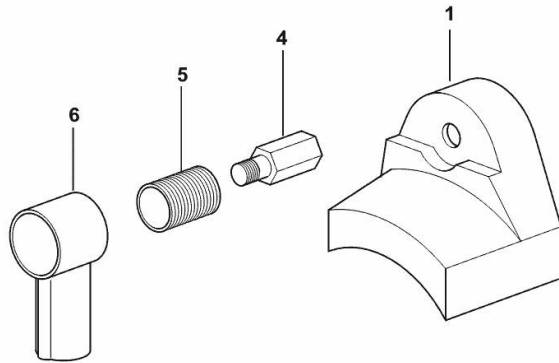
STARTER MOTOR COVER

Fig.	P/n	QTY	Name
------	-----	-----	------

Notes:

- WITH FRONT BATTERY [R3 EVO 100]

1	0.008.0391.0	1	cover
4	0.008.0616.0	1	pipe fitting m 10
5	0.008.0378.0	1	cover
6	2.6519.033.0	1	cap



9_H1284_02_0-B-001

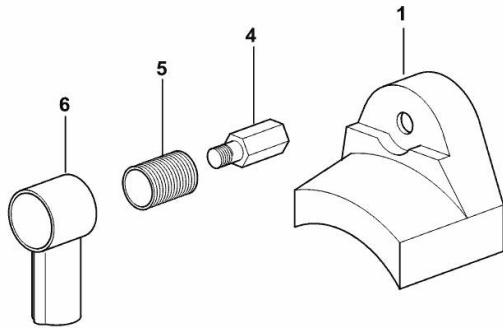
STARTER MOTOR COVER

Fig.	P/n	QTY	Name
------	-----	-----	------

Notes:

- WITH UNDER STEP BATTERY [R3 EVO 100]

1	0.008.0391.0	1	cover
4	0.008.0616.0	1	pipe fitting m 10
5	0.008.0378.0	1	cover
6	2.6519.033.0	1	cap



9_H1284_13_0-B-001

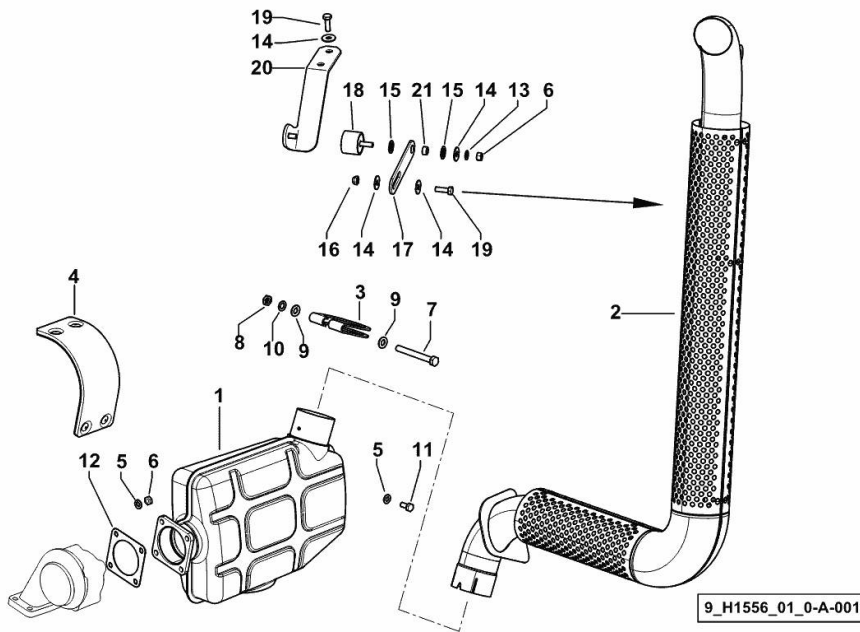
EXHAUST SILENCER

Fig.	P/n	QTY	Name
------	-----	-----	------

Notes:

- FOR MODELS WITH PLATFORM [R3 EVO 100]

1	0.014.7971.3/20	1	silencer
2	0.014.9346.4/30	1	tube
3	0.010.5018.0	1	clamp
4	0.014.7978.3/10	1	guard
5	2.1310.004.2	4	flat washer 8.4x17
6	2.1011.005.2	3	nut m 8 p.1.25
7	2.0112.327.2	1	screw m 10 p.1.5 x 90
8	2.1011.206.2	1	nut
9	2.1310.006.2	2	flat washer 10.5x21
10	2.1470.006.2	1	lock washer 10
11	2.0112.206.2	2	screw m 8 p.1.25 x 18
12	0.010.9862.0	1	gasket
13	2.1475.002.2	1	conical washer 8
14	2.1312.004.2	5	washer 8x24x2
15	2.1549.169.0	2	spacer 14.5x22x2
16	2.1121.005.2	2	nut m 8 p.1.25
17	0.014.9348.0/10	1	small plate
18	0.010.1054.2/10	1	support
19	2.0112.209.2	3	screw m 8 p 1.25 x 25
20	0.014.9347.3	1	bracket
21	2.1579.994.2	1	spacer 8.5x14x7



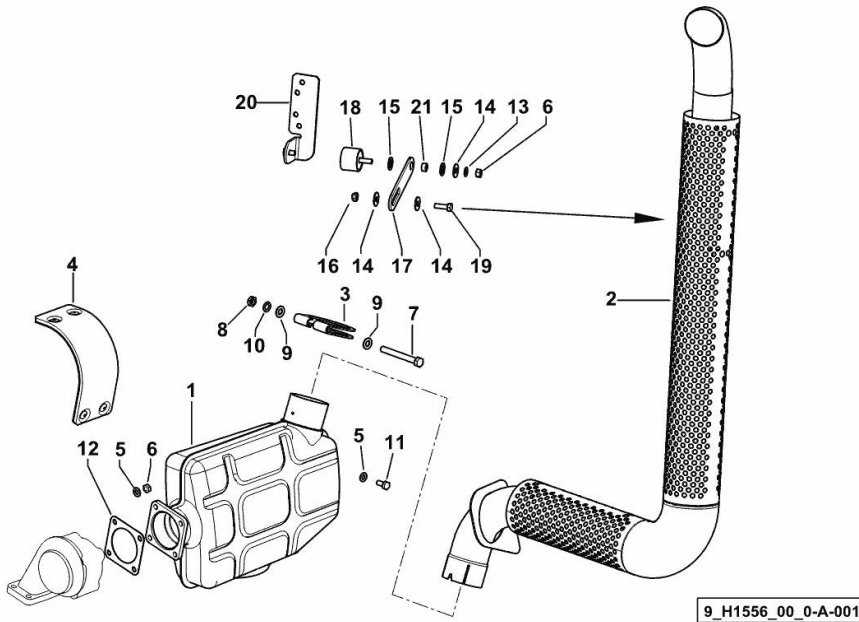
EXHAUST SILENCER

Fig.	P/n	QTY	Name
------	-----	-----	------

Notes:

- FOR MODELS WITH CAB [R3 EVO 100]

1	0.014.7971.3/20	1	silencer
2	0.014.7974.4/30	1	tube
3	0.010.5018.0	1	clamp
4	0.014.7978.3/10	1	guard
5	2.1310.004.2	4	flat washer 8.4x17
6	2.1011.105.2	3	nut m 8 p.1.25
7	2.0112.327.2	1	screw m 10 p.1.5 x 90
8	2.1011.206.2	1	nut
9	2.1310.006.2	2	flat washer 10.5x21
10	2.1470.006.2	1	lock washer 10
11	2.0112.206.2	2	screw m 8 p.1.25 x 18
12	0.010.9862.0	1	gasket
13	2.1475.002.2	1	conical washer 8
14	2.1312.004.2	3	washer 8x24x2
15	2.1549.169.0	2	spacer 14.5x22x2
16	2.1121.005.2	1	nut m 8 p.1.25
17	0.014.9253.0/10	1	small plate
18	0.010.1054.2/10	1	support
19	2.0112.209.2	1	screw m 8 p 1.25 x 25
20	0.014.9242.3	1	bracket
21	2.1579.994.2	1	spacer 8.5x14x7

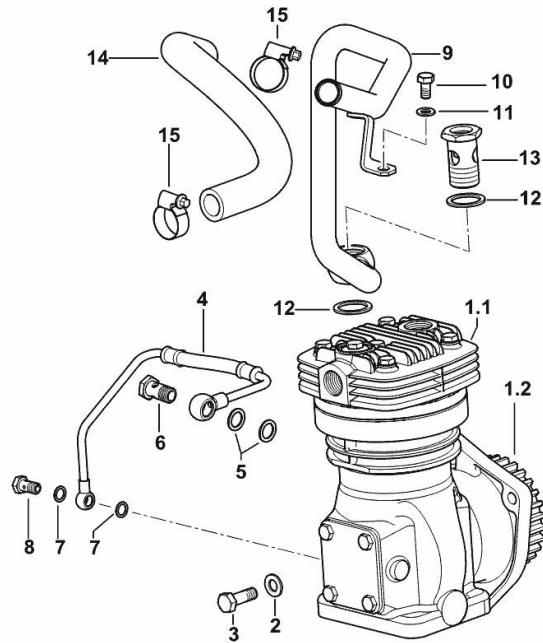


AIR COMPRESSOR

Fig.	P/n	QTY	Name
------	-----	-----	------

Notes:
[R3 EVO 100]

1.1	04428408.4	1	air compressor 229 cm ³ ☞ 04428408.4																												
1.2	04295536	1	gear Z = 43																												
2	2.1475.003.2	3	washer 10																												
3	2.0112.311.2	3	screw m 10 p.1.5 x 30																												
4	0.014.8296.3	1	tube																												
5	2.1560.010.0	2	gasket 14.2 x 20																												
6	2.3335.006.2	1	pipe union m 14 p.1.5X26																												
7	2.1560.005.0	2	copper gasket 10.2 x 14																												
8	2.3339.074.2	1	pipe union m 10 p.1x19	9	0.014.9049.3	1	tube	10	2.0112.205.2	1	screw m 8 p.1.25 x 16	11	2.1310.004.2	1	flat washer 8.4x17	12	2.1569.068.0	2	gasket 26.3x34	13	2.3335.010.2	1	pipe union m 26x1.5	14	0.014.9301.0	1	tube	15	2.6851.003.0	2	clamp Ø 25/40
9	0.014.9049.3	1	tube																												
10	2.0112.205.2	1	screw m 8 p.1.25 x 16																												
11	2.1310.004.2	1	flat washer 8.4x17																												
12	2.1569.068.0	2	gasket 26.3x34																												
13	2.3335.010.2	1	pipe union m 26x1.5																												
14	0.014.9301.0	1	tube																												
15	2.6851.003.0	2	clamp Ø 25/40																												



9_N9119_40_0-A-001

Buy Now



Our support email:

ebooklibonline@outlook.com