

R6.150.4 T4i VRT

Section: H0 - HYDRAULIC AND PNEUMATIC SYSTEM|

Ref: H0.01.25 (1)

TUBO DE RETORNO DA DIRECÇÃO ASSISTIDA

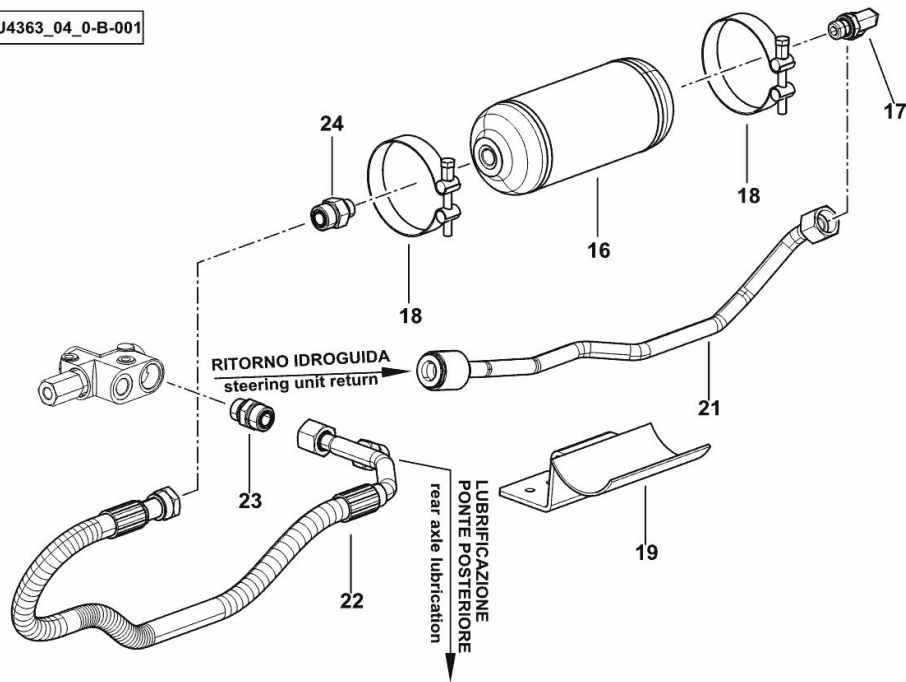
Fig.	P/n	QTY	Name
------	-----	-----	------

Notes:

[R6.150.4 T4i VRT]

16	0.019.0172.0/10	1	vibration damper WEBER (50019 <-)
16	0.019.0172.0/20	1	vibration damper WEBER
17	2.3273.007.0	2	pipe fitting
18	0.164.8157.3/20	2	fascia Ø 97
19	0.020.8584.2	1	support
21	0.020.8587.3	1	tube
22	0.020.8588.3/20	1	tube
23	2.3272.012.0	1	pipe fitting m 22 p.1.5
24	2.3272.011.0	1	pipe fitting m 18 p.1.5

K9_U4363_04_0-B-001



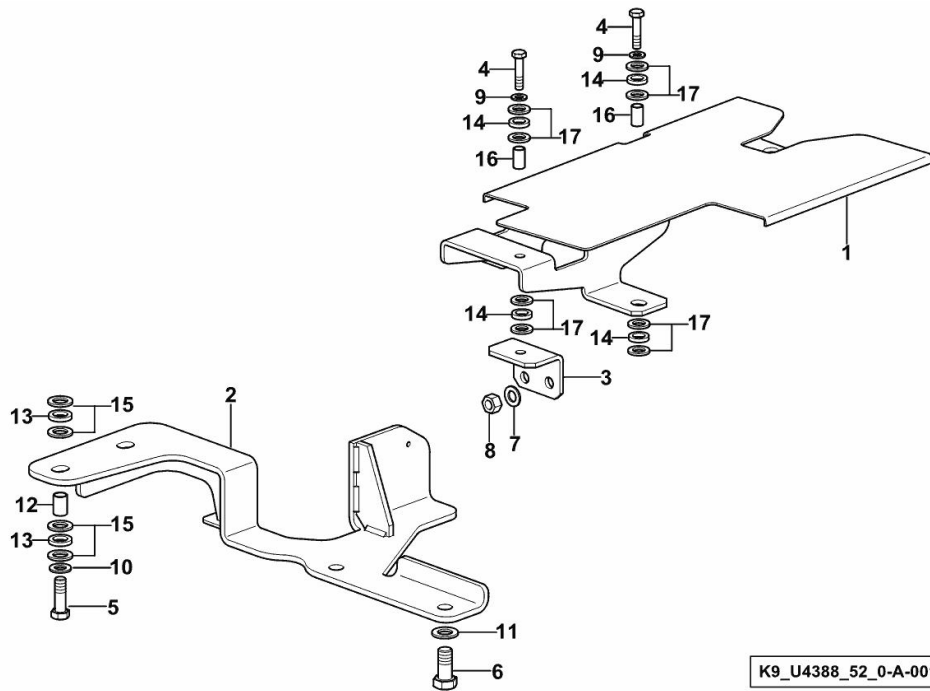
OIL TANK SUPPORT

Fig.	P/n	QTY	Name
------	-----	-----	------

Notes:

[R6.150.4 T4i VRT]

1	0.019.0382.4/10	1	support
2	0.019.0454.3	1	support
3	0.019.1036.3	1	bracket
4	2.0112.317.2	3	screw m 10 p.1.5 x 45
5	2.0112.517.2	2	screw m 14 p.2 x 45
6	2.0112.715.2	2	screw m 18 p.2.5x40
7	2.1475.005.2	2	washer 14
8	2.1011.408.2	2	nut m 14 p.1.5
9	2.1310.006.3	3	flat washer 10.5x21x2
10	2.1310.009.2	2	flat washer 15x20
11	2.1310.011.2	2	flat washer 19x34
12	2.1549.359.2	2	spacer
13	2.1549.361.0	4	rubber plug
14	2.1549.362.0	6	rubber plug
15	2.1569.217.2	8	washer
16	2.1579.064.2	3	spacer
17	2.1599.510.2	12	spacer



K9_U4388_52_0-A-001

R6.150.4 T4i VRT

Section: H0 - HYDRAULIC AND PNEUMATIC SYSTEM|

Ref: H0.01.28 (1)

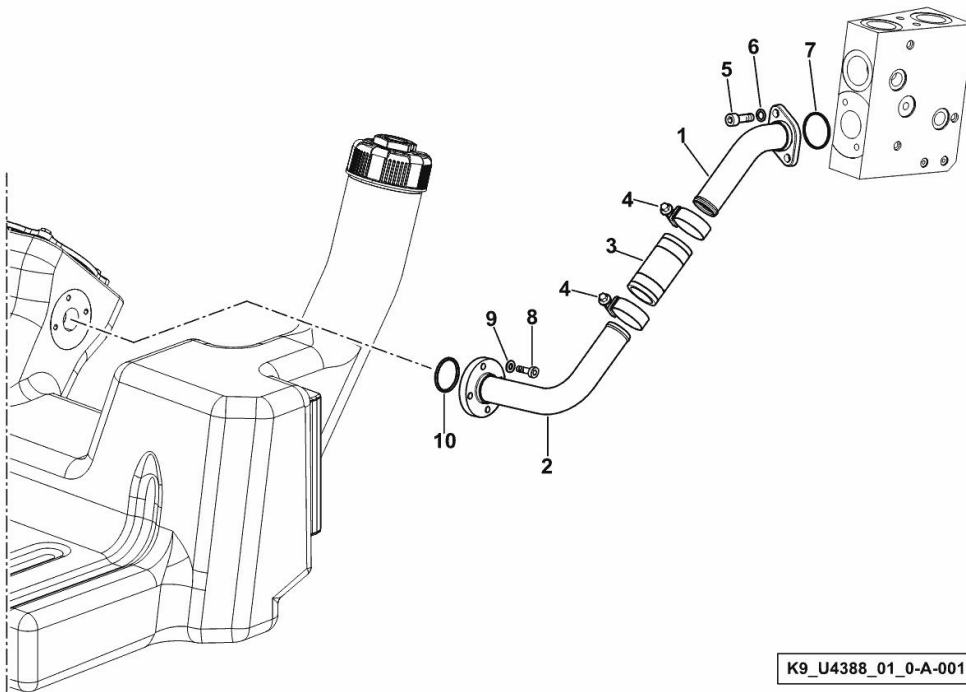
PIPE FROM OIL RESERVOIR TO REAR CONTROL VALVE

Fig.	P/n	QTY	Name
------	-----	-----	------

Notes:

- FOR MODELS WITHOUT FRONT LIFT [R6.150.4 T4i VRT]

1	0.019.5402.3	1	tube
2	0.019.6840.3	1	tube
3	2.3213.228.0	1	sleeve
4	2.6851.004.0	2	clamp Ø 32/50
5	2.0312.208.2	2	screw m 8 p.1.25 x 25
6	2.1480.014.2	2	washer 8
7	2.1532.092.0	1	ring 34.65x1.78
8	2.0312.106.2	3	screw m 6 p.1 x 20
9	2.1310.002.2	3	flat washer 6.4x12.5
10	2.1532.087.0	1	oil seal



R6.150.4 T4i VRT

Section: H0 - HYDRAULIC AND PNEUMATIC SYSTEM|

Ref: H0.01.29 (1)

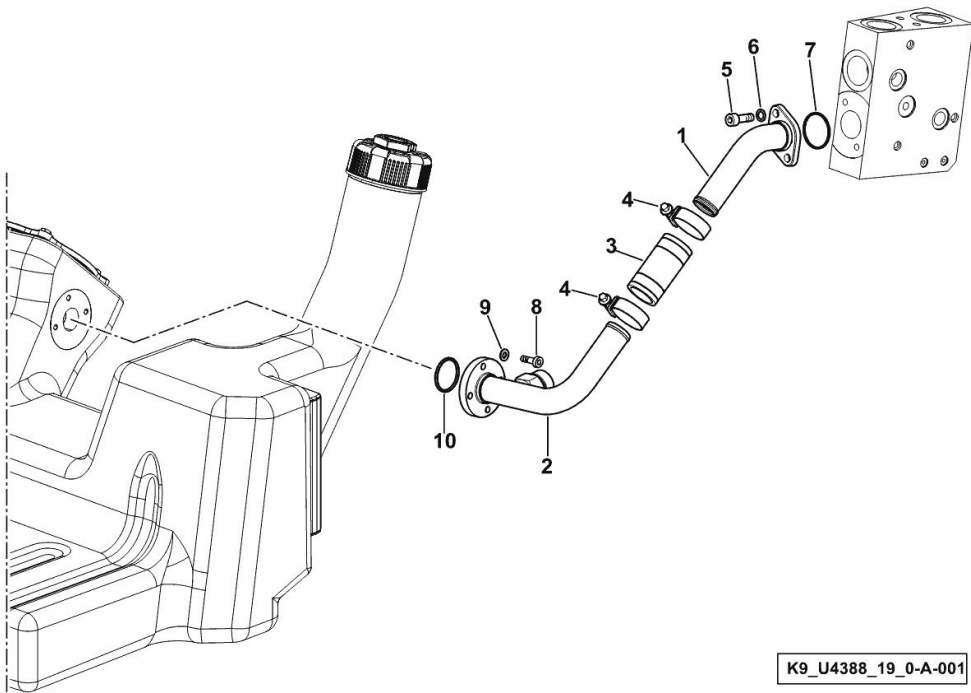
PIPE FROM OIL RESERVOIR TO REAR CONTROL VALVE

Fig.	P/n	QTY	Name
------	-----	-----	------

Notes:

- FOR MODELS WITH FRONT LIFT [R6.150.4 T4i VRT]

1	0.019.5402.3	1	tube
2	0.019.5404.3/10	1	tube
3	2.3213.228.0	1	sleeve
4	2.6851.004.0	2	clamp Ø 32/50
5	2.0312.208.2	2	screw m 8 p.1.25 x 25
6	2.1480.014.2	2	washer 8
7	2.1532.092.0	1	ring 34.65x1.78
8	2.0312.106.2	3	screw m 6 p.1 x 20
9	2.1310.002.2	3	flat washer 6.4x12.5
10	2.1532.087.0	1	oil seal



R6.150.4 T4i VRT

Section: H0 - HYDRAULIC AND PNEUMATIC SYSTEM|

Ref: H0.01.30 (1)

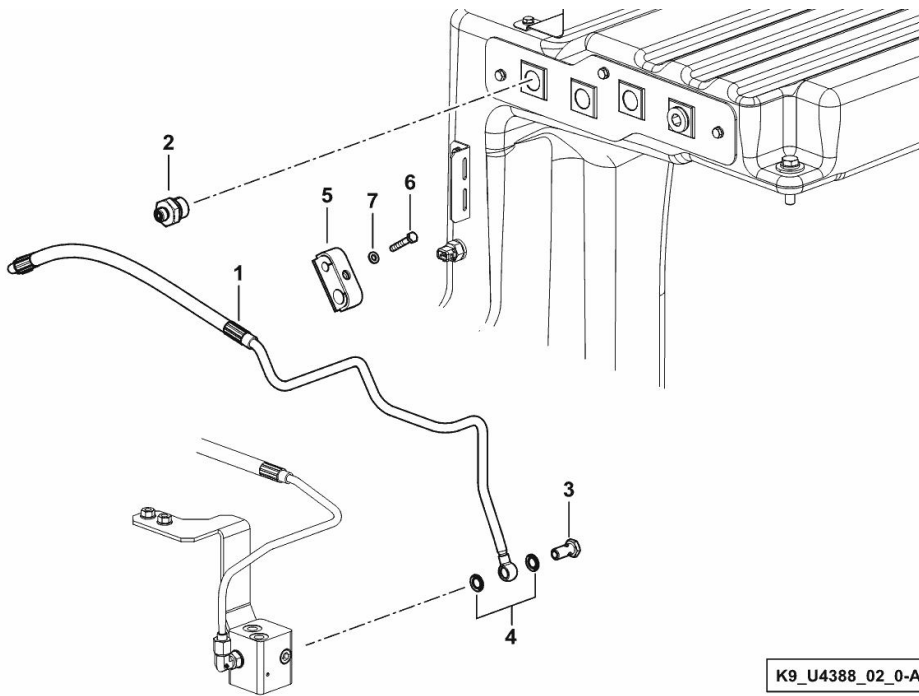
DRAINING HYDRAULIC CIRCUIT LOAD SENSING

Fig.	P/n	QTY	Name
------	-----	-----	------

Notes:

- FOR VERSIONS WITH FRONT CONTROL VALVE [R6.150.4 T4i VRT]

1	0.020.0516.3	1	tube
2	2.3249.703.2	1	pipe fitting M22 9/16" - 18
3	2.3335.005.2	1	pipe union m 12 p.1.5 x 24
4	2.1561.106.0	2	gasket Ø 12 -B-
5	2.3320.208.0	1	terminal Ø 10/16
6	2.0112.013.2	1	screw m 6 p.1 x 35
7	2.1310.002.2	1	flat washer 6.4x12.5



K9_U4388_02_0-A-001

R6.150.4 T4i VRT

Section: H0 - HYDRAULIC AND PNEUMATIC SYSTEM|

Ref: H0.01.31 (1)

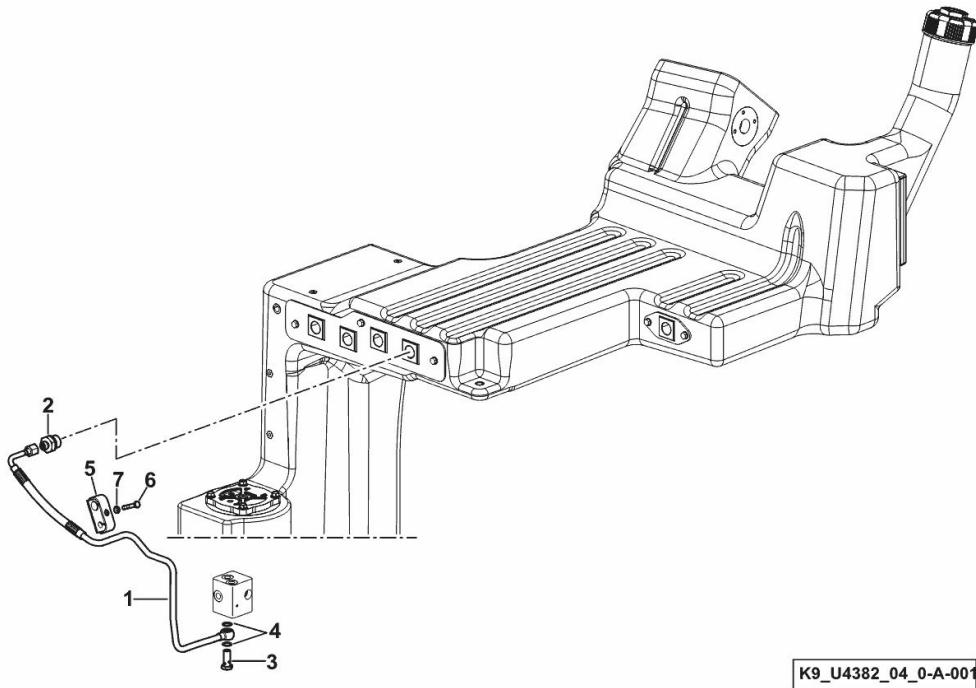
DRAINING HYDRAULIC CIRCUIT LOAD SENSING

Fig.	P/n	QTY	Name
------	-----	-----	------

Notes:

[R6.150.4 T4i VRT]

1	0.020.0515.3	1	tube
2	2.3249.703.2	1	pipe fitting M22 9/16" - 18
3	2.3335.052.2	1	pipe union m 12 p.1.5
4	2.1561.106.0	2	gasket Ø 12 -B-
5	2.3320.208.0	1	terminal Ø 10/16
6	2.0112.013.2	1	screw m 6 p.1 x 35
7	2.1310.002.2	1	flat washer 6.4x12.5



Buy Now



Our support email:

ebooklibonline@outlook.com